



CEMENT BOND LOG

Mesa Wireline

Company	ENCANA OIL & GAS (USA) INC.		
Well	MAIER 8-4-28		
Field	WATTENBERG		
County	WELD		
State	COLORADO		
Company ENCANA OIL & GAS (USA) INC.		Location:	
Well MAIER 8-4-28		APL #: 05-123-35606-0000	
Field WATTENBERG		SHL: 1779' FNL & 2190' FEL	
County WELD		BHL: 2490' FNL & 50' FEL	
State COLORADO		Other Services	
SEC. 28 TWP. 2N RGE. 68W		NONE	
Permanent Datum GROUND LEVEL		Elevation 4931'	
Log Measured From KELLY BUSHING = 12'		K.B. 4943'	
Drilling Measured From KELLY BUSHING		D.F. 4942'	
		G.L. 4918'	

Date	JULY 14 2012		
Run Number	ONE		
Depth Driller	8510'		
Depth Logger	8478'		
Bottom Logged Interval	8478'		
Top Log Interval	4490' / 800'		
Open Hole Size	7.875"		
Type Fluid	WATER		
Density / Viscosity	~8.34#		
Max. Recorded Temp.	259 DEG F		
Estimated Cement Top	4690'		
Time Well Ready	N/A		
Time Logger on Bottom	N/A		
Equipment Number	WLO61/PRB1		
Location	AULT. CO		
Recorded By	V.FULLER		
Witnessed By	T. MAJORS		
Borehole Record			
Run Number	Bit	From	To
ONE	12.25"	0"	900'
TWO	7.875"	900'	8510'
Tubing Record			
Casing Record	Size	Wgt/Ft	Top
Surface String	8.675"	24#	0"
Prot. String			
Production String	4.5"	11.6#	0"
Liner			

<<< Fold Here >>>

All interpretations are opinions based on inferences from electrical or other measurements and we cannot and do not guarantee the accuracy or correctness of any interpretation, and we shall not, except in the case of gross or willful negligence on our part, be liable or responsible for any loss, costs, damages, or expenses incurred or sustained by anyone resulting from any interpretation made by any of our officers, agents or employees. These interpretations are also subject to our general terms and conditions set out in our current Price Schedule.

Comments

LOG CORRELATED TO (PSI) HIGH RESOLUTION INDUCTION LOG DATED JUNE 22 2012
SHORT JOINT = 7556' - 7577'

WE APPRECIATE YOUR BUSINESS, MESA WIRELINE LLC, GRAND JUNCTION CO. (970) 257-0458



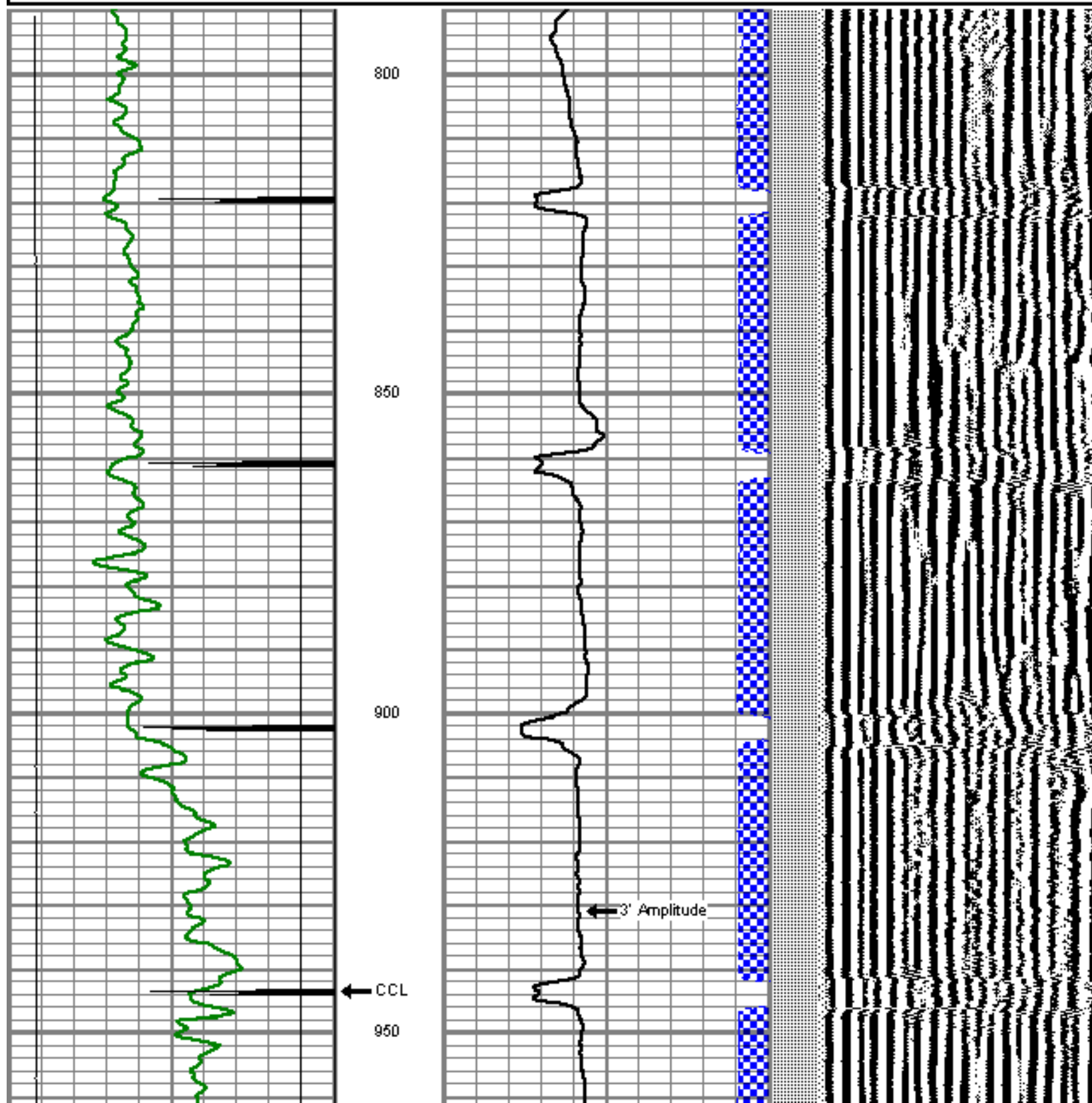
TOP PASS

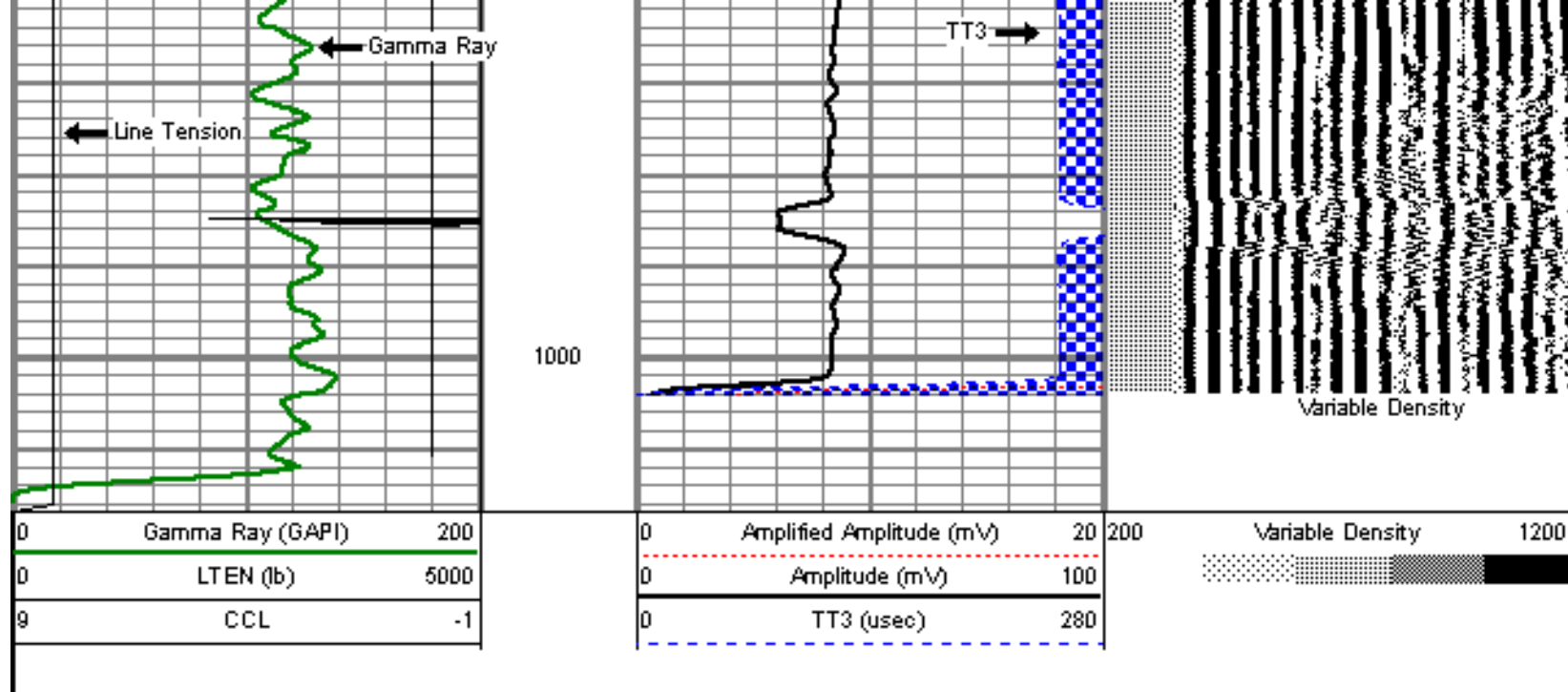
Database File: c:\documents and settings\xpmuser\desktop\data\maier 4-4-28.db
Dataset Pathname: pass17
Presentation Format: dcbl_prb
Dataset Creation: Sat Jul 14 11:41:15 2012 by Log SCH 120430
Charted by: Depth in Feet scaled 1:240

0	Gamma Ray (GAPI)	200
0	LTEN (lb)	5000
9	CCL	-1

0	Amplified Amplitude (mV)	20
0	Amplitude (mV)	100
0	TT3 (usec)	280

200 Variable Density 1200

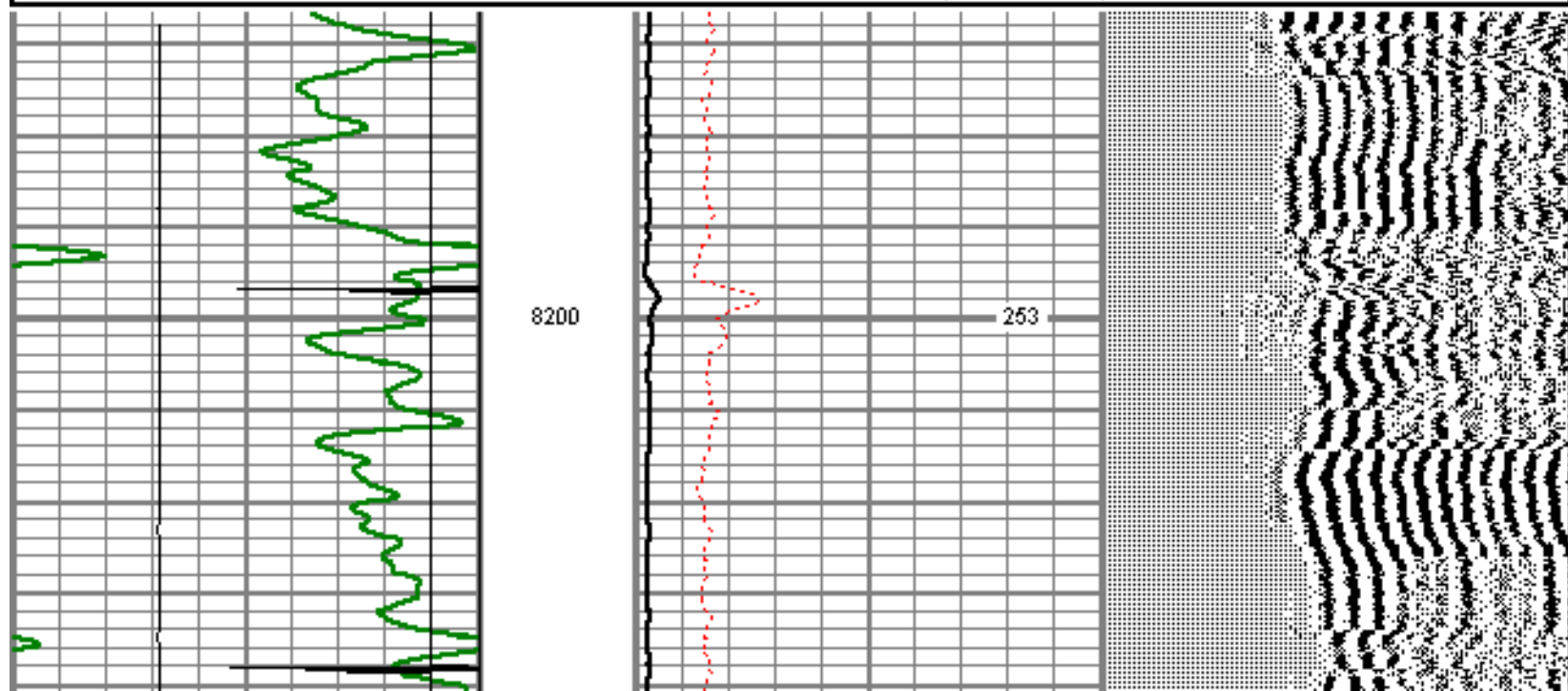
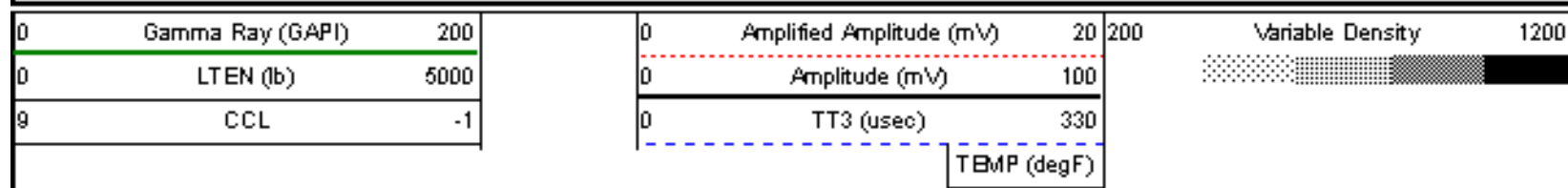


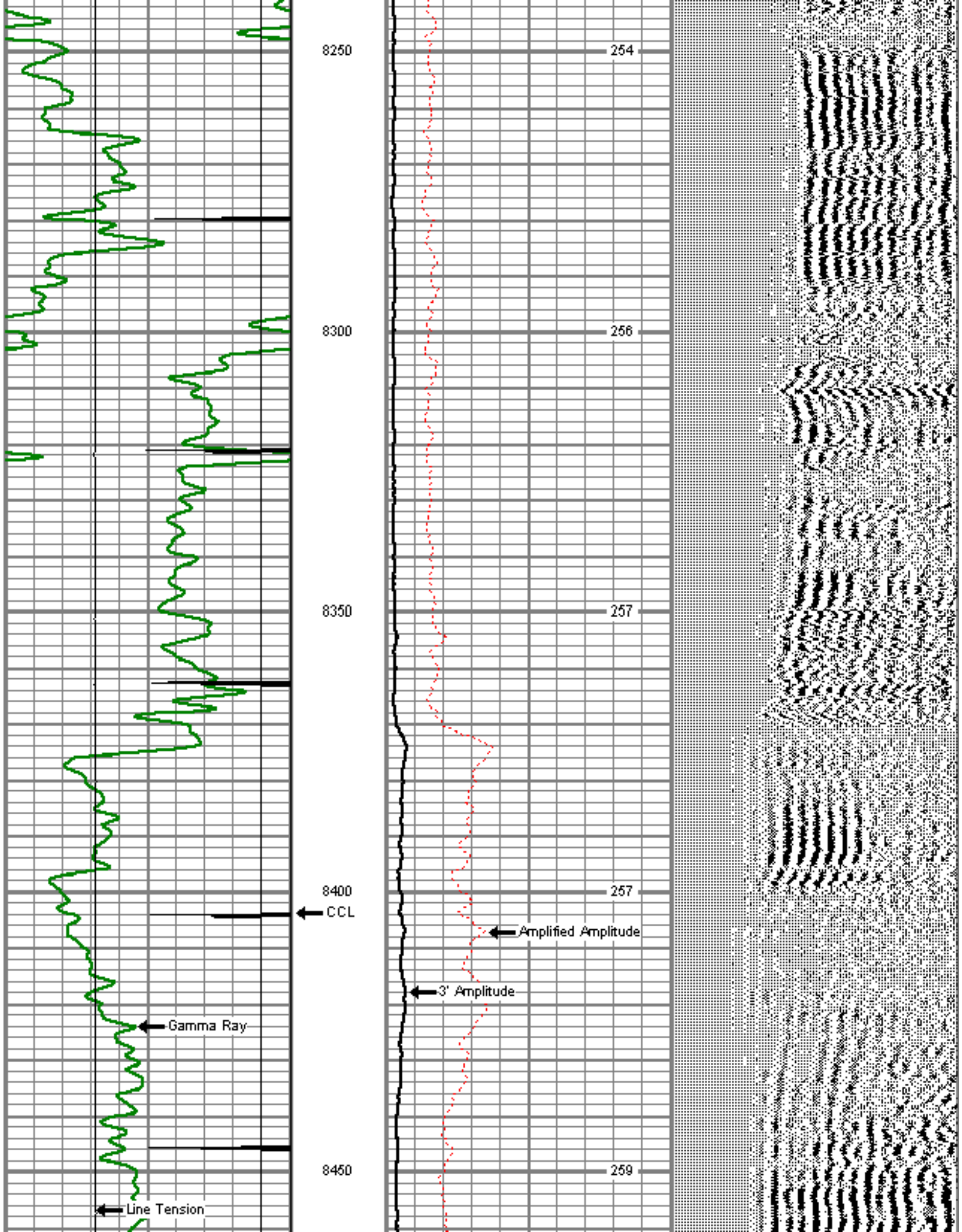


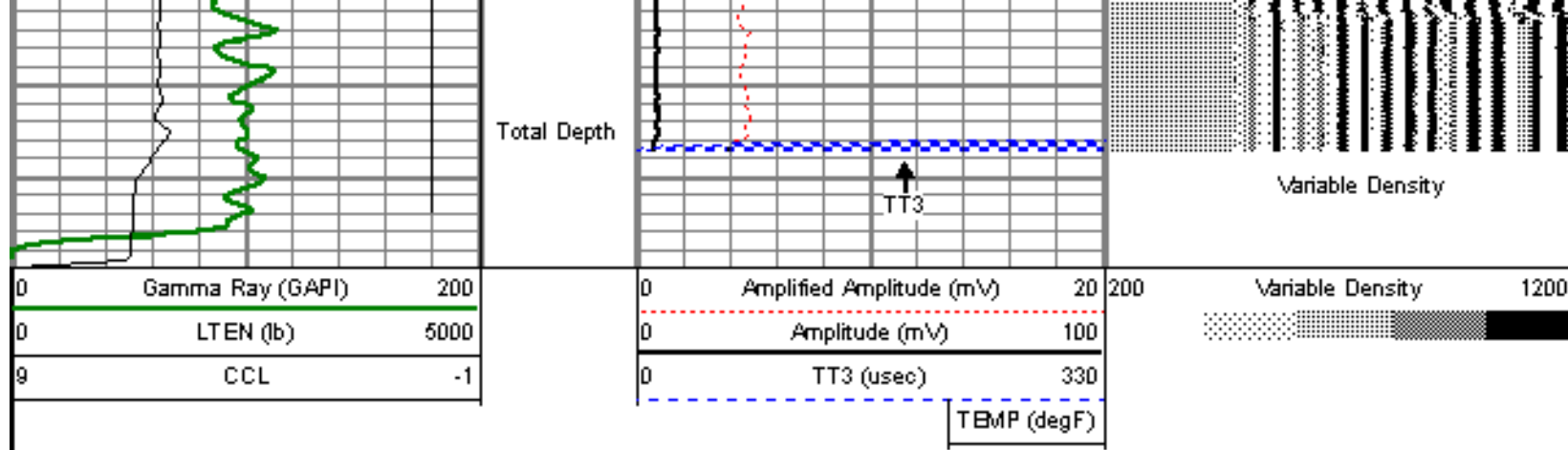
REPEAT PASS

5" = 100'

Database File: c:\documents and settings\xpmuser\desktop\data\maier 4-4-28.db
 Dataset Pathname: pass15
 Presentation Format: dcbl_prb
 Dataset Creation: Sat Jul 14 10:01:49 2012 by Log SCH 120430
 Charted by: Depth in Feet scaled 1:240



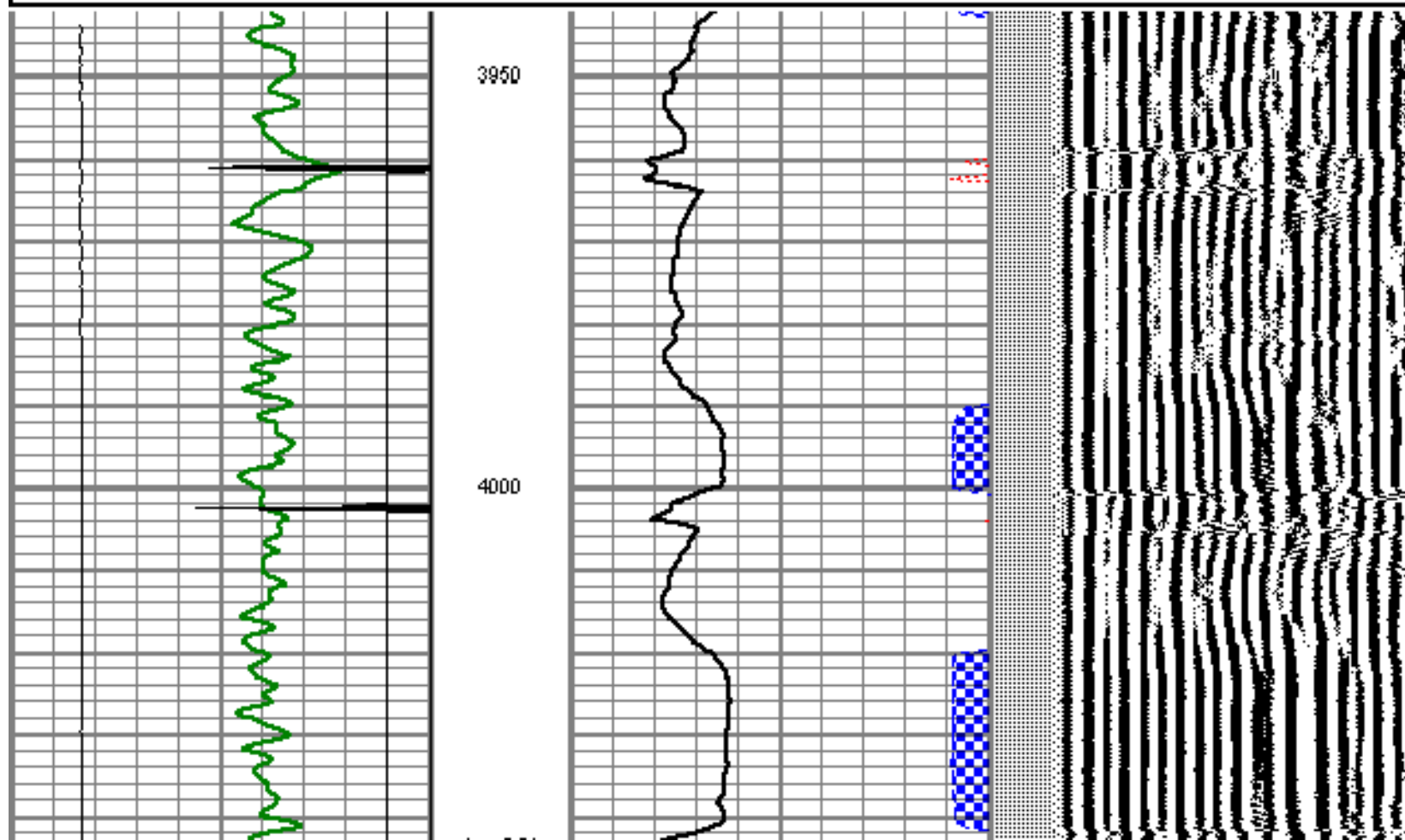
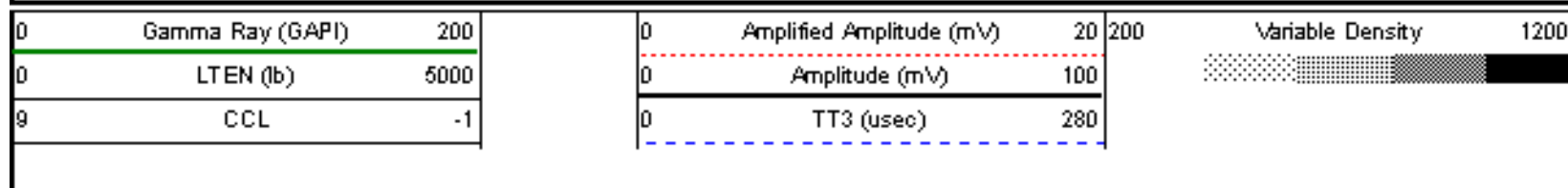


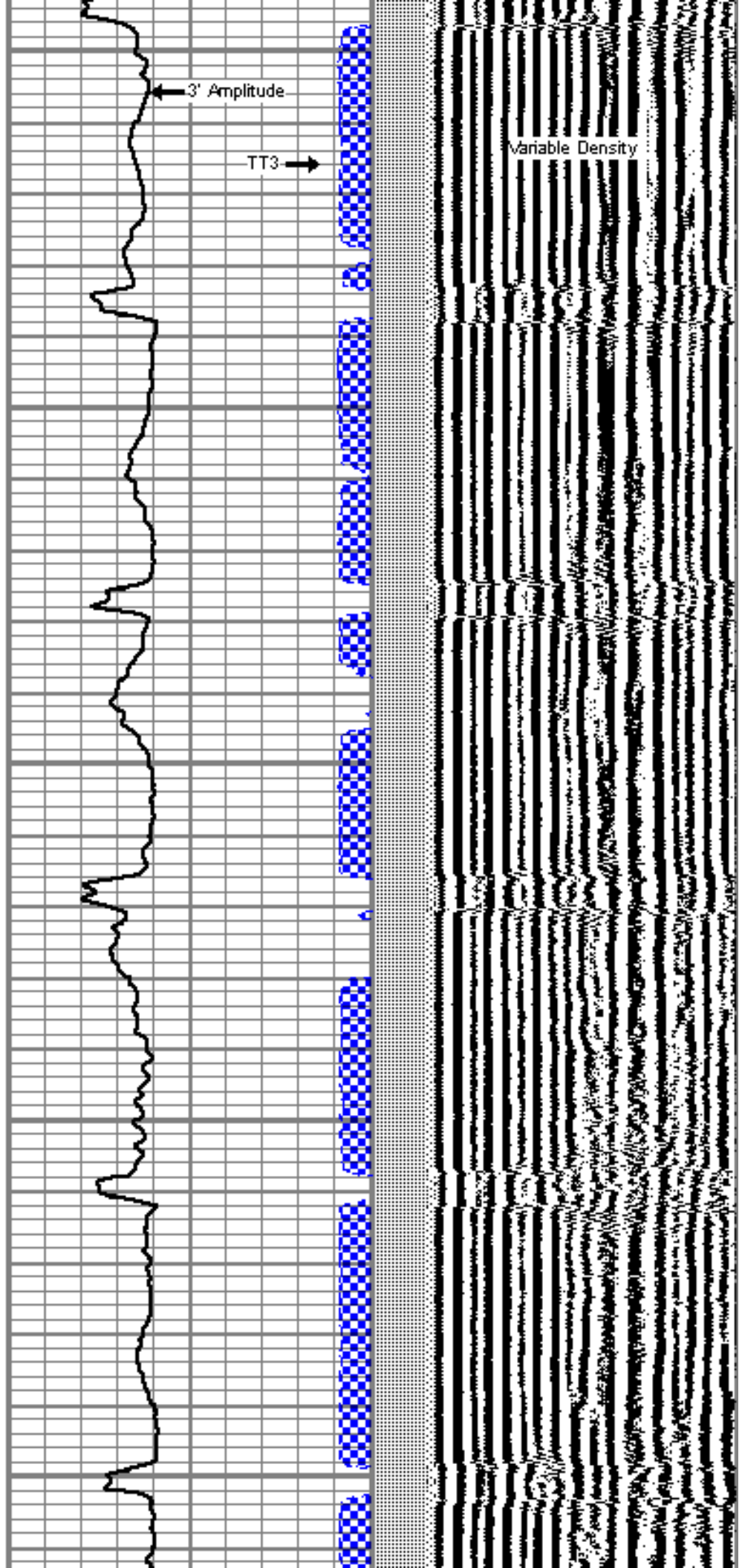
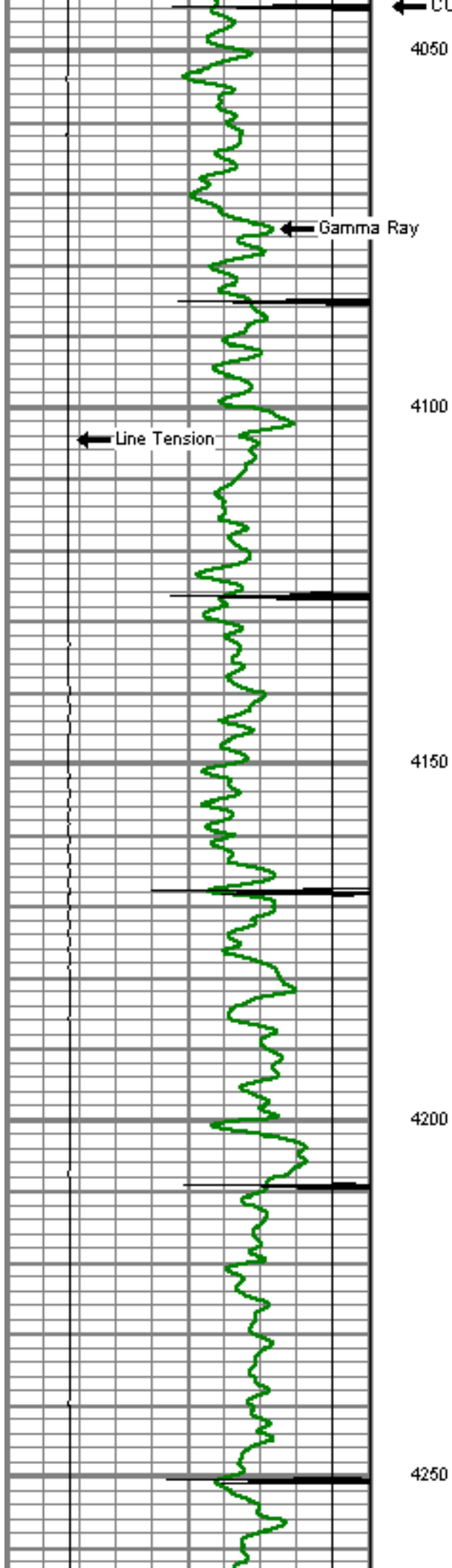


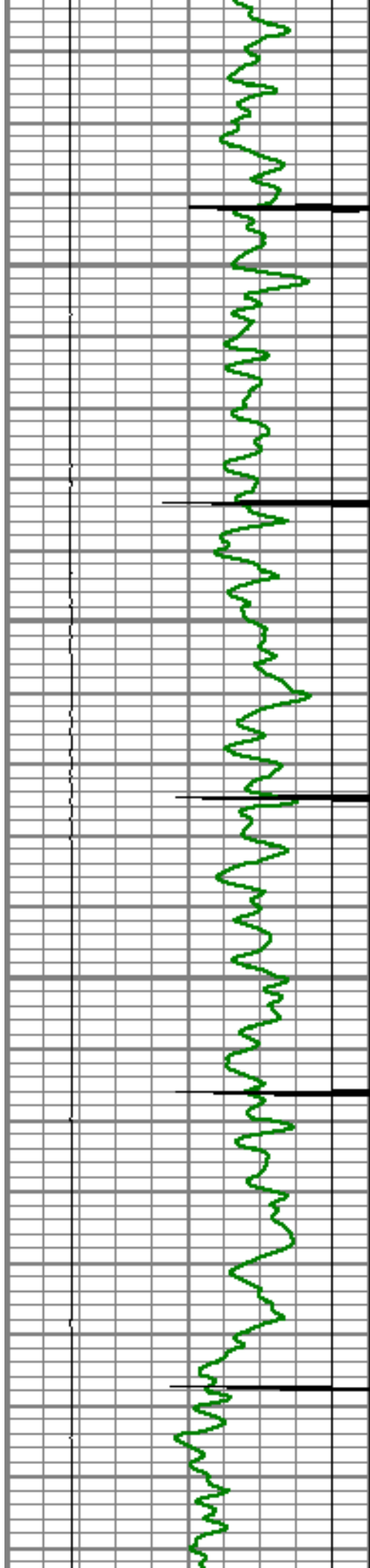
MAIN PASS

5" = 100'

Database File: c:\documents and settings\xpnmuser\desktop\data\maier 4-4-28.db
 Dataset Pathname: pass16
 Presentation Format: dobl_prb
 Dataset Creation: Sat Jul 14 10:11:43 2012 by Log SCH 120430
 Charted by: Depth in Feet scaled 1:240





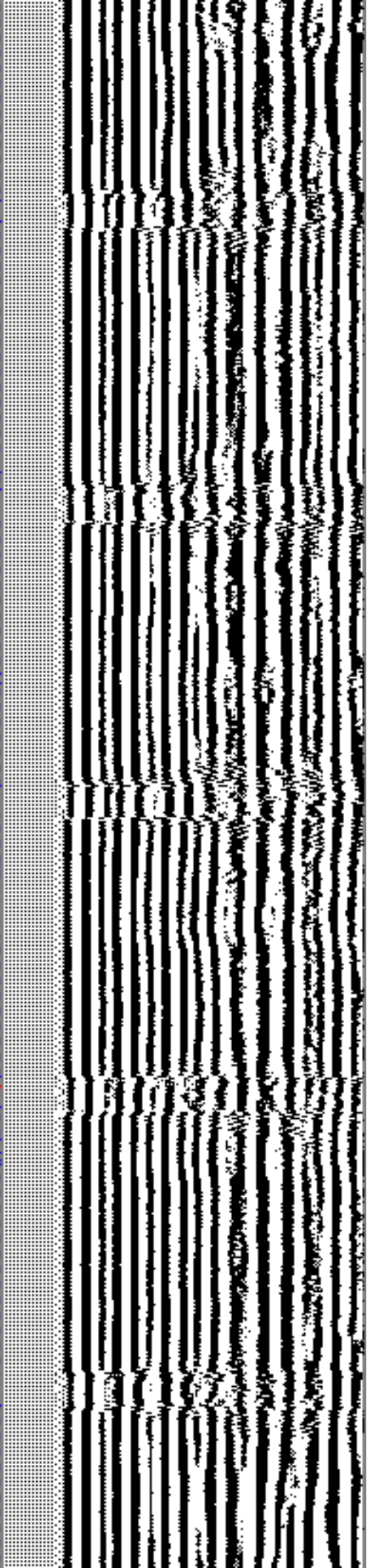
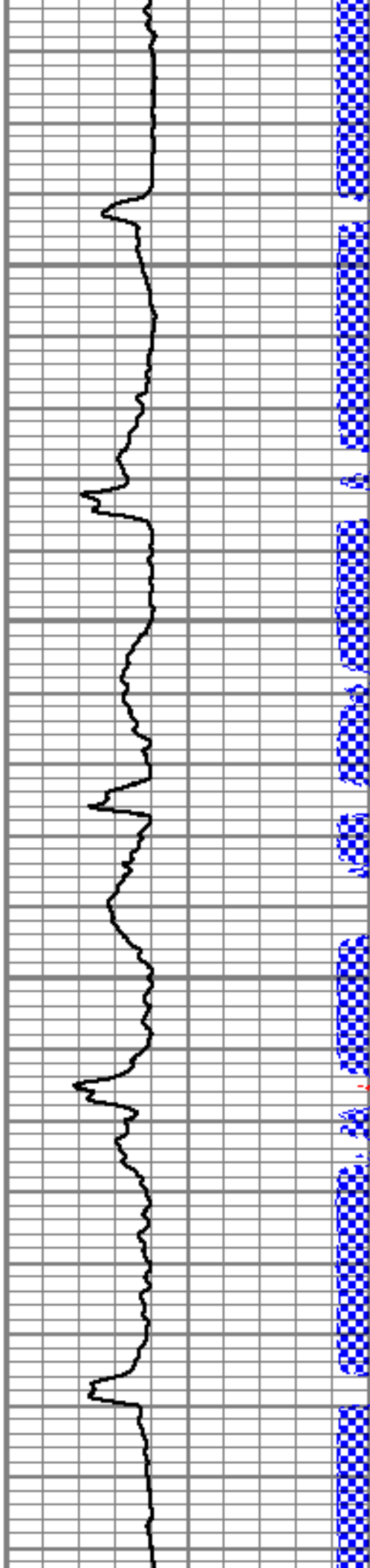


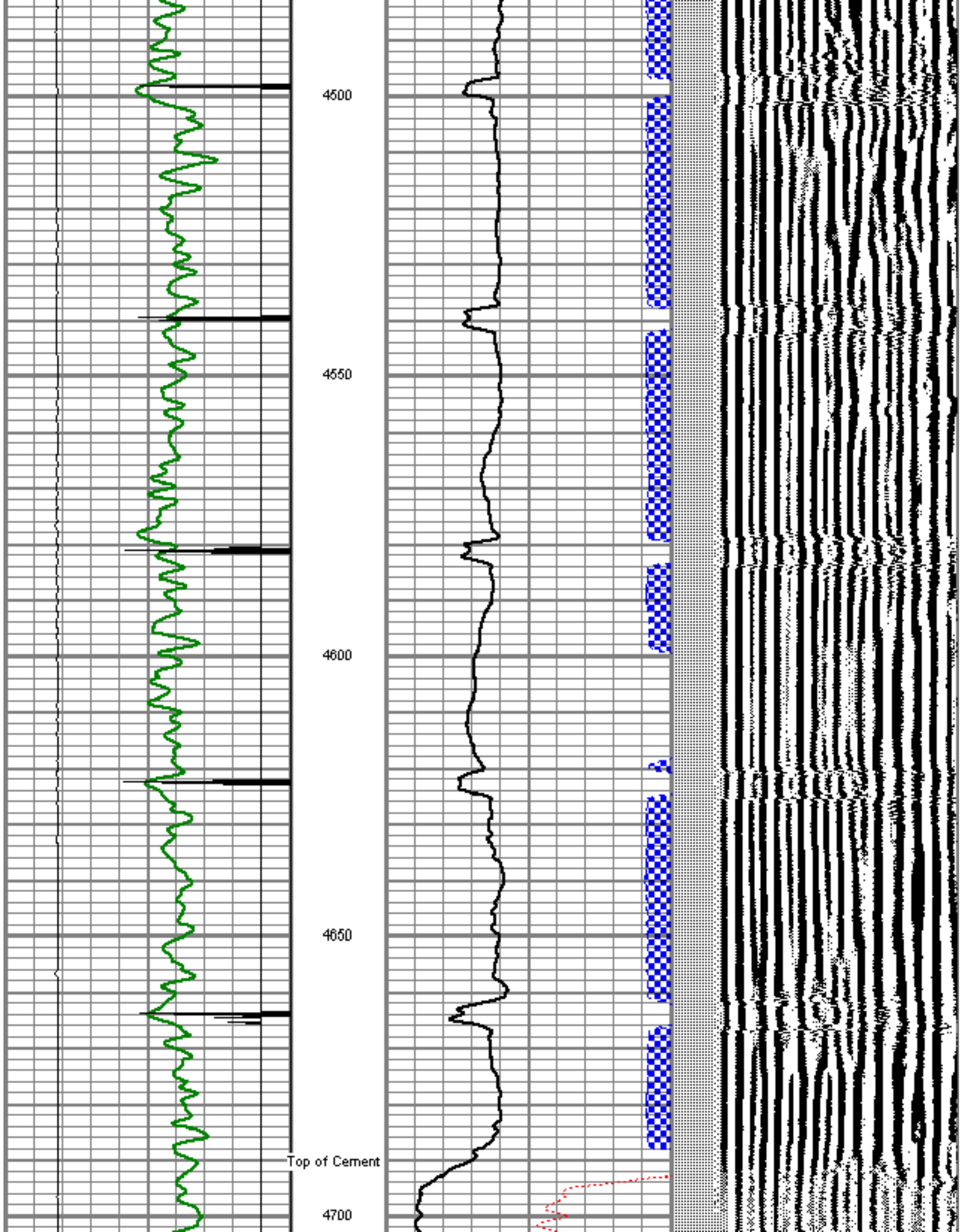
4300

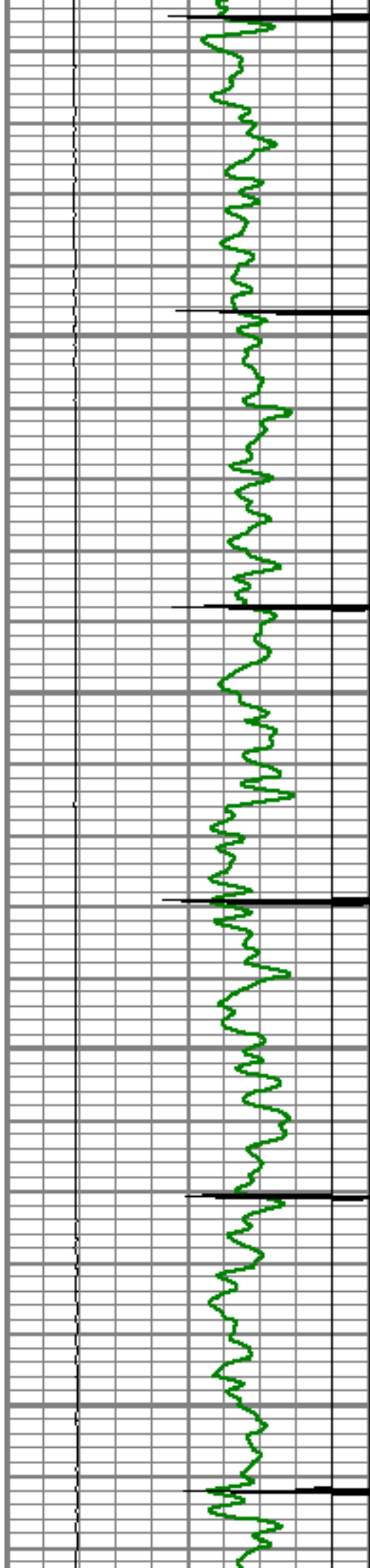
4350

4400

4450





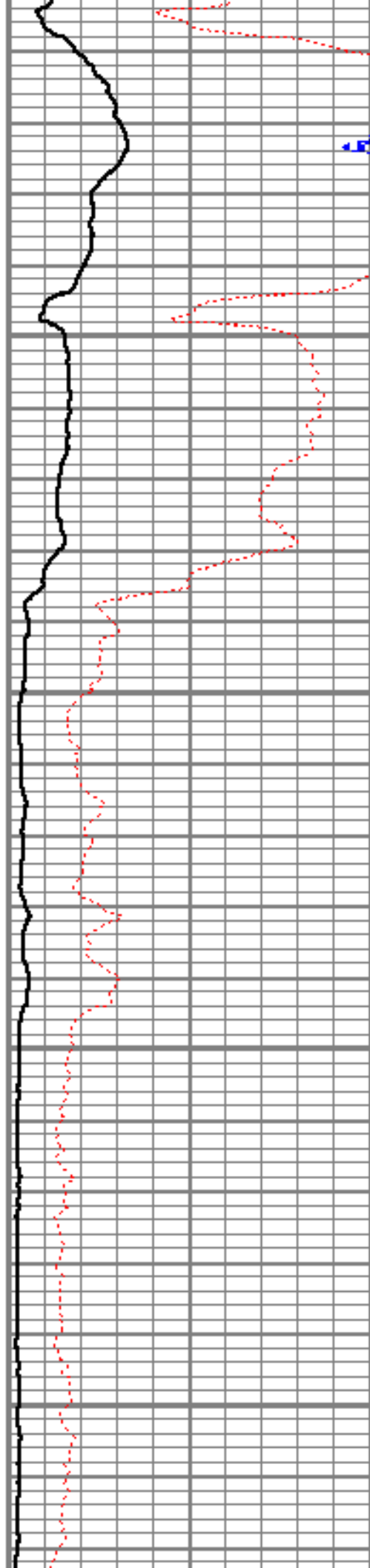


4750

4800

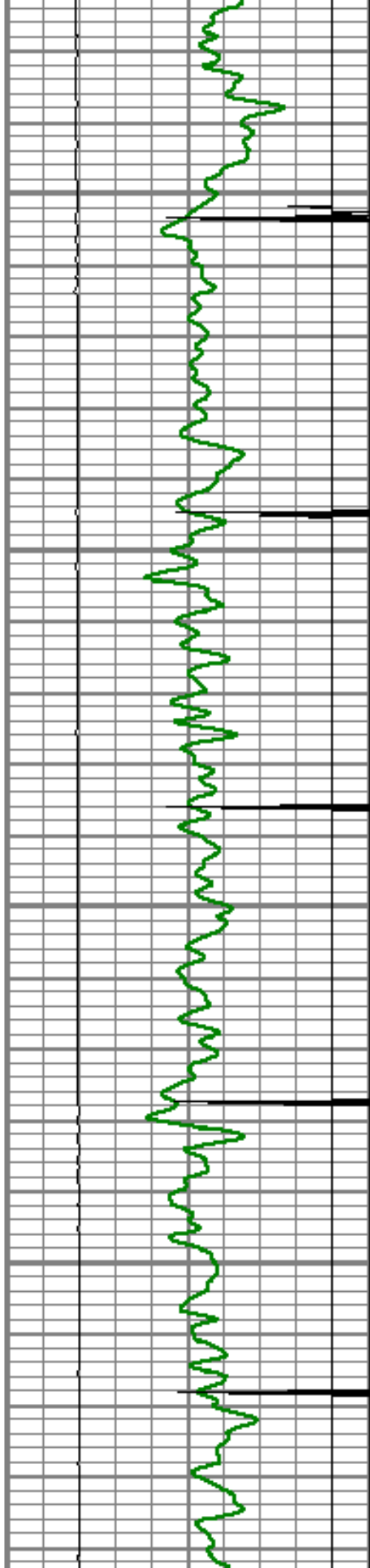
4850

4900



h



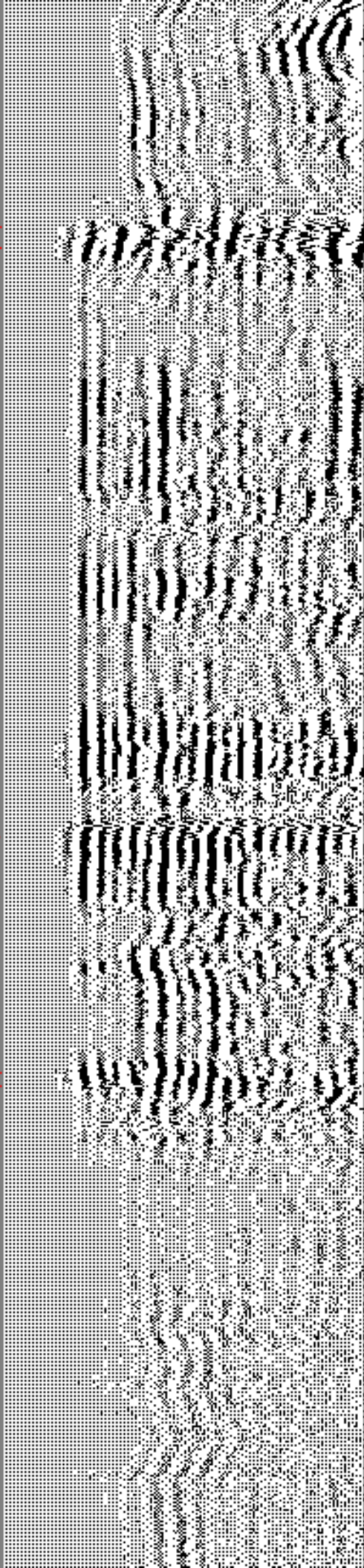
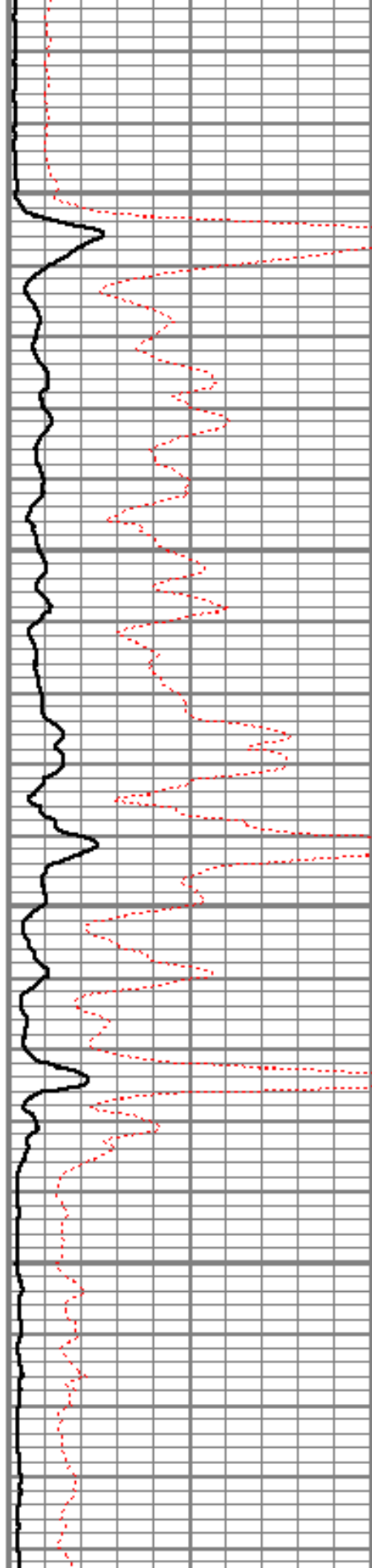


4950

5000

5050

5100





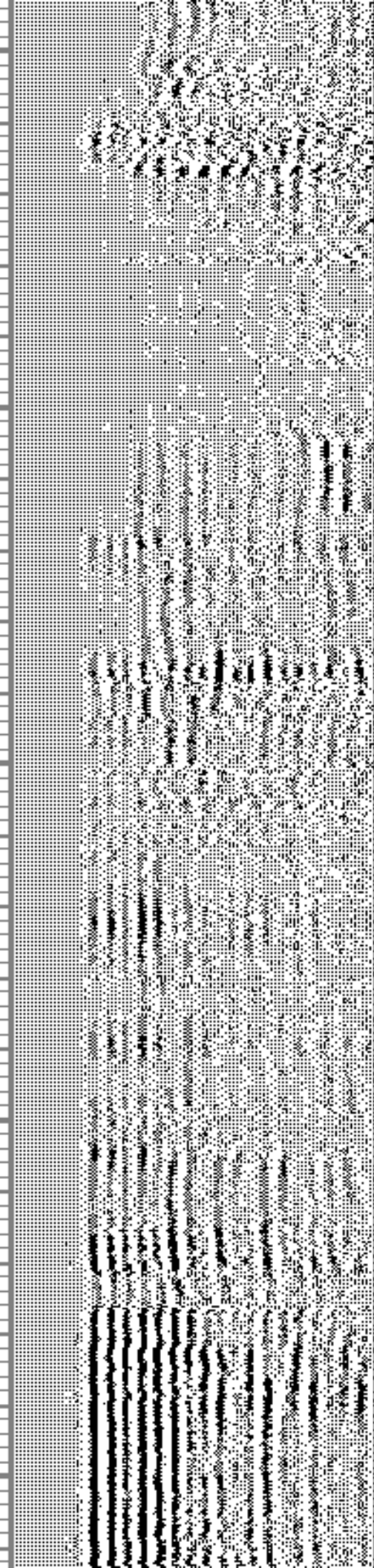
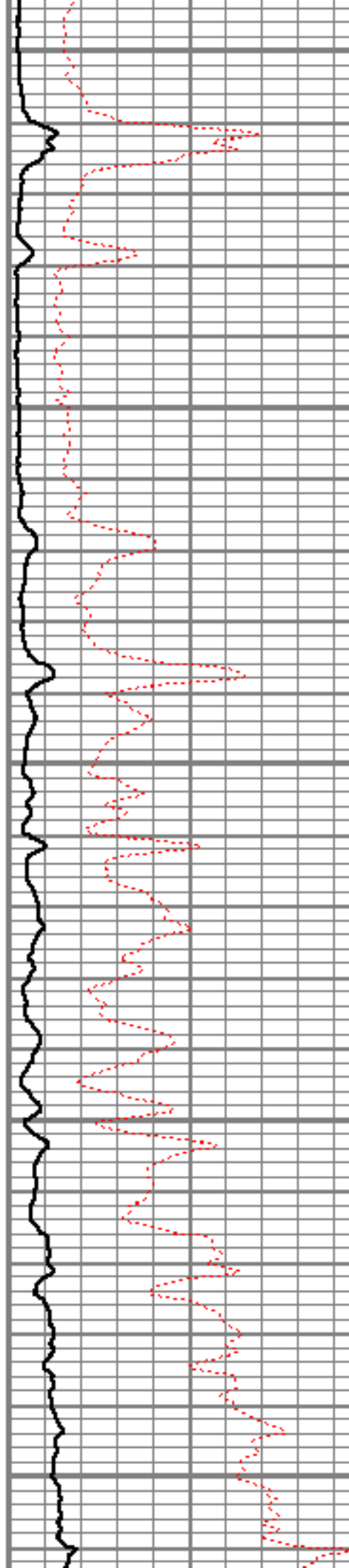
5150

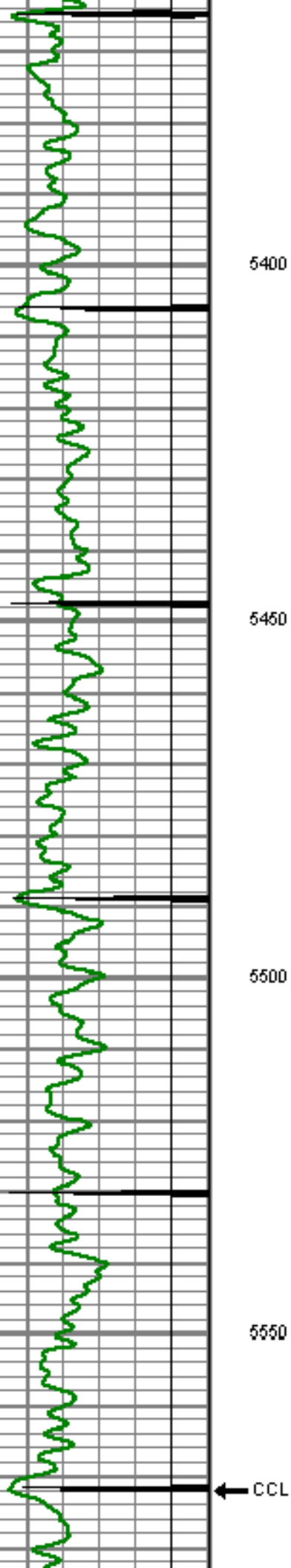
5200

5250

5300

5350





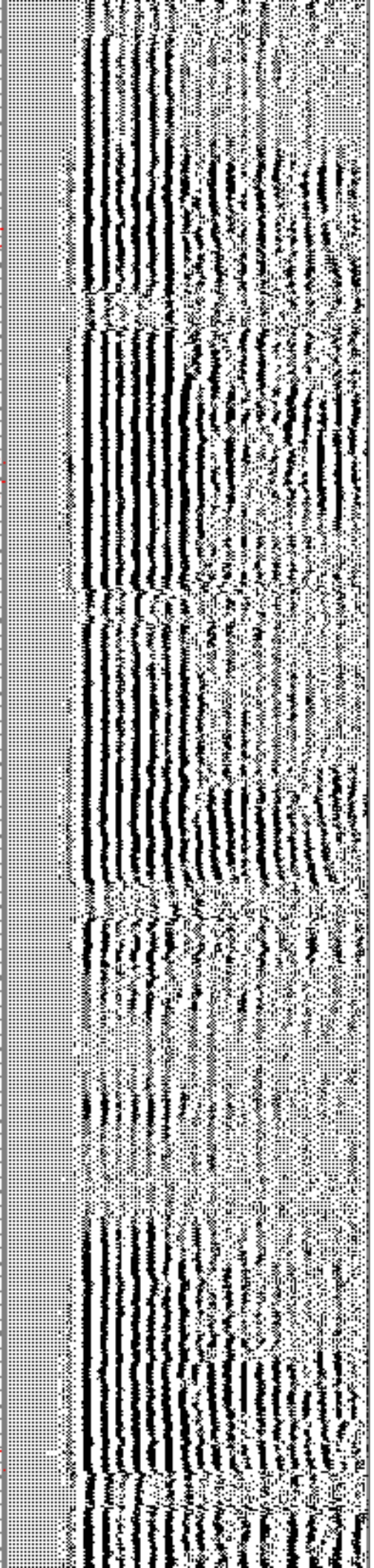
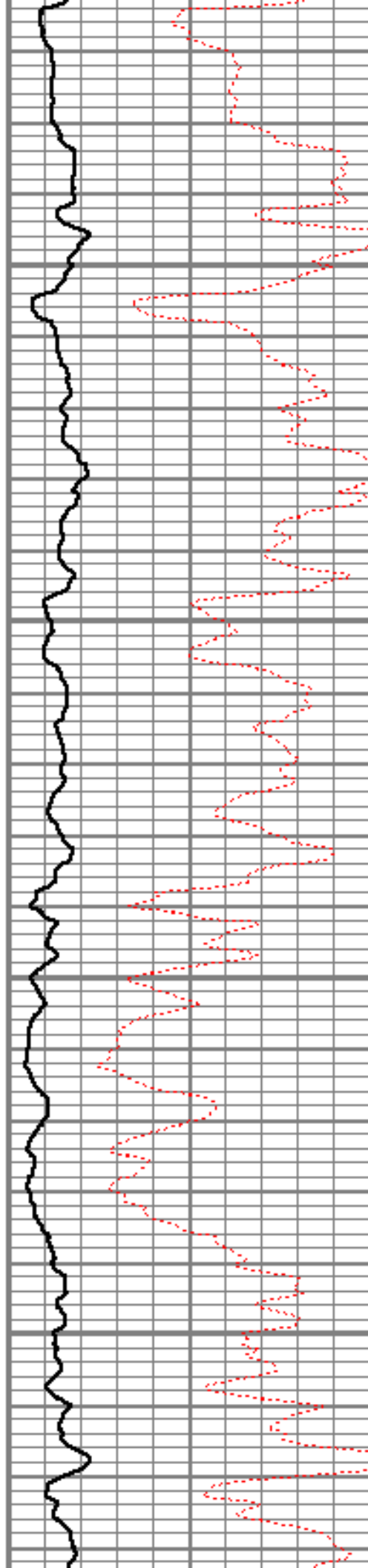
5400

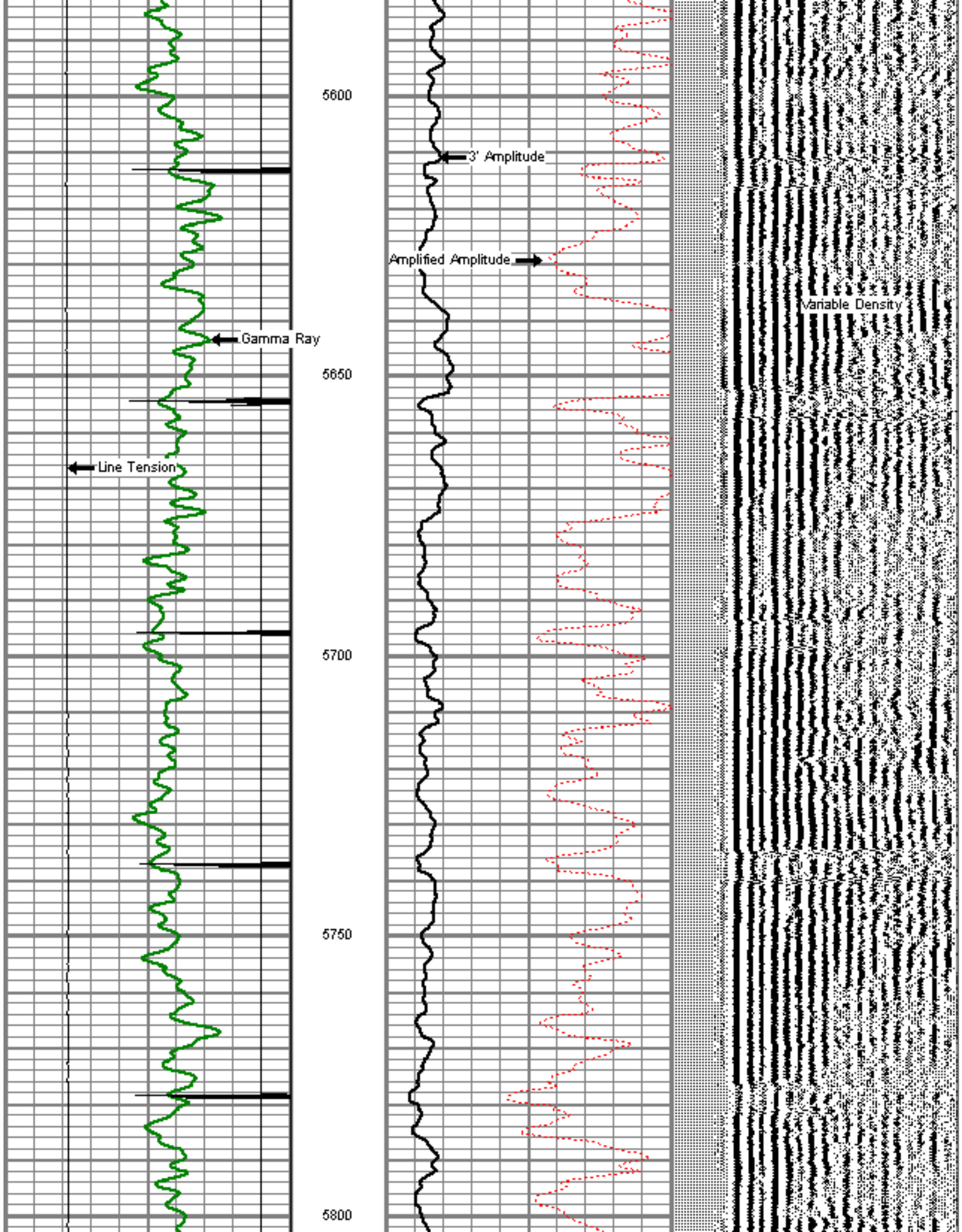
5450

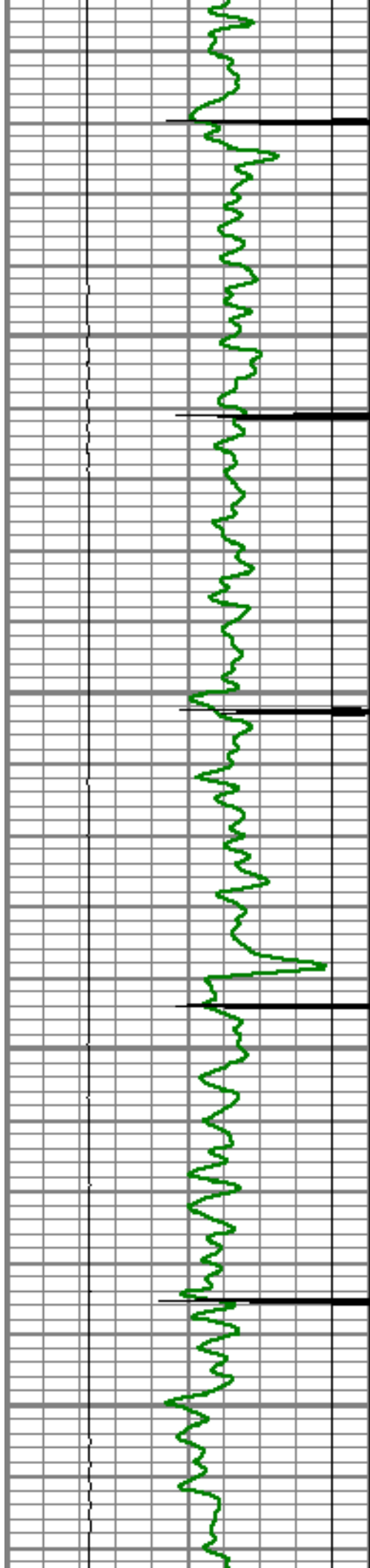
5500

5550

← CCL





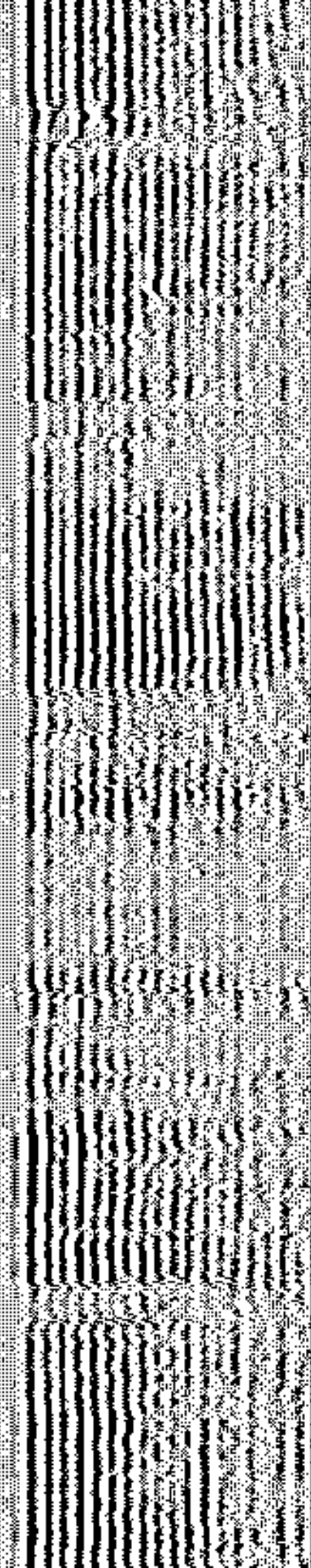
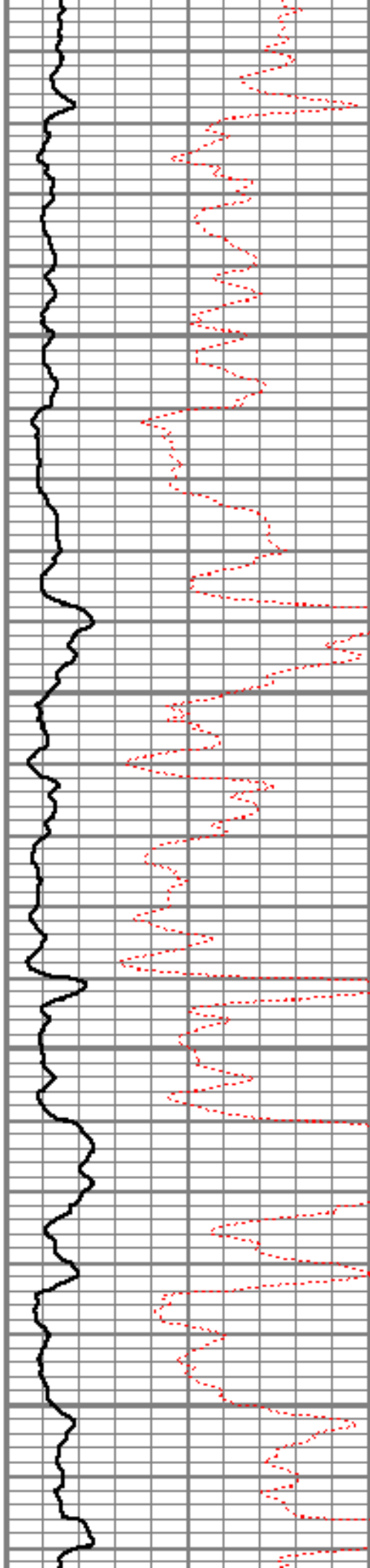


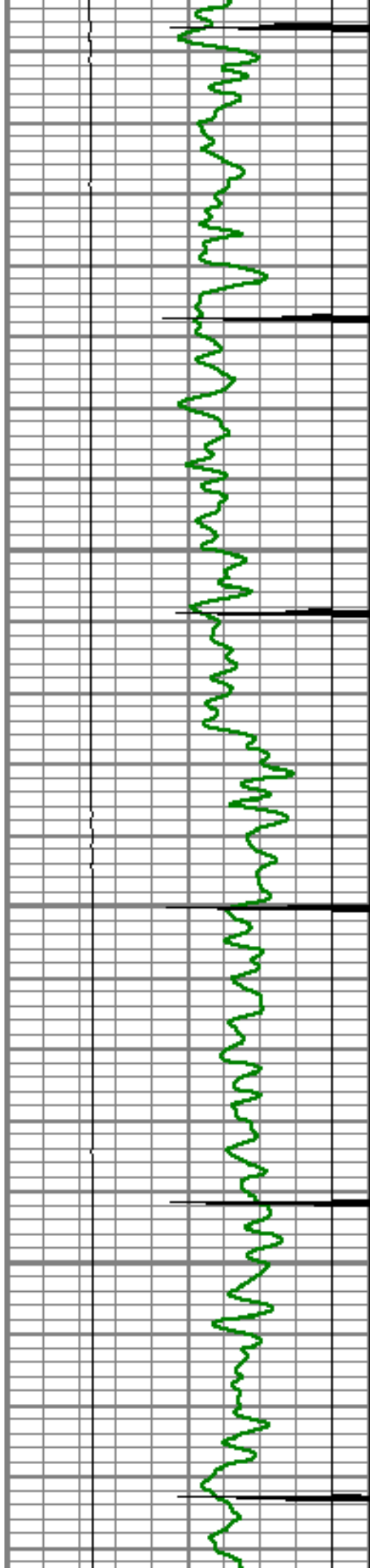
5850

5900

5950

6000



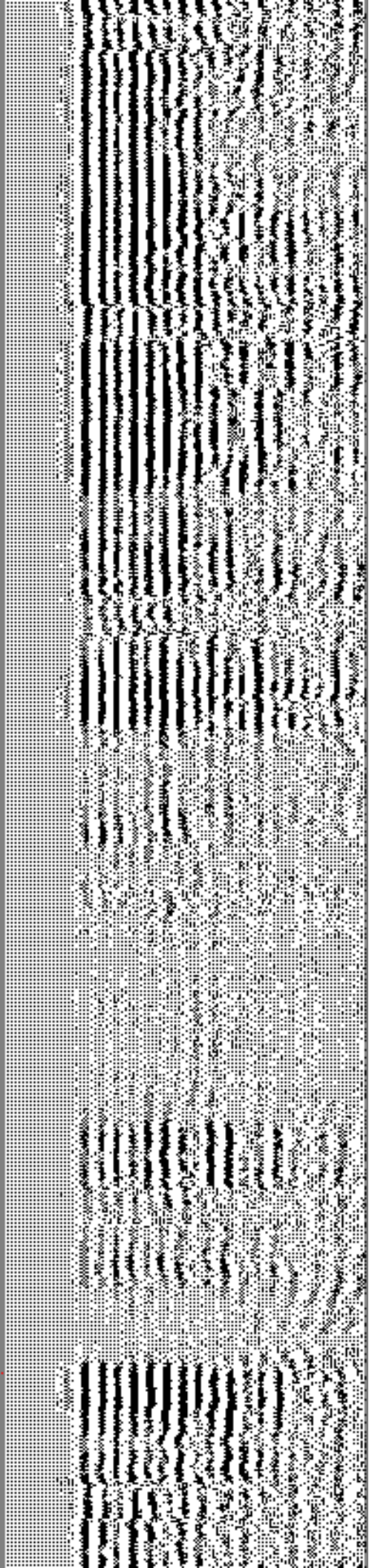
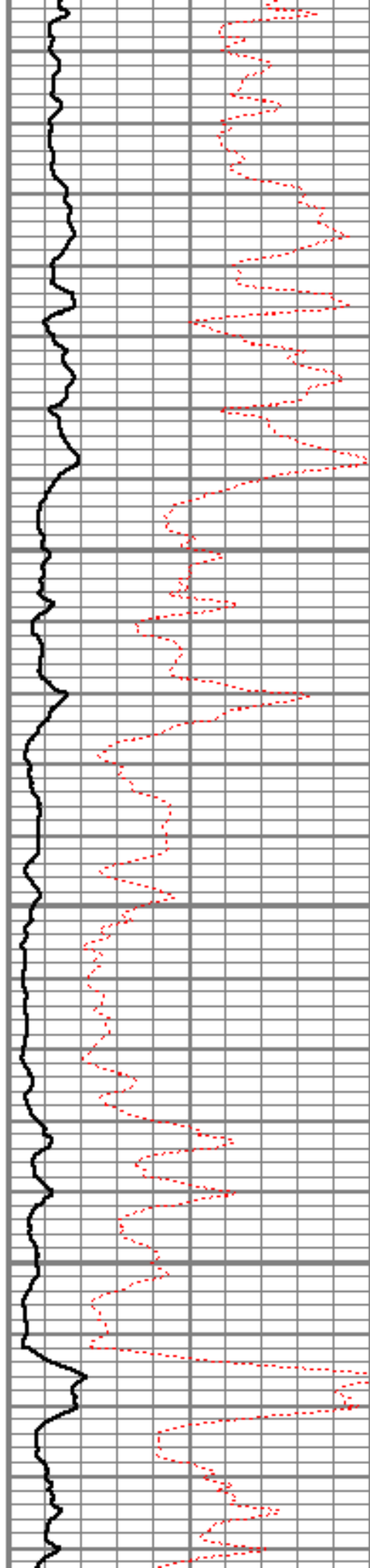


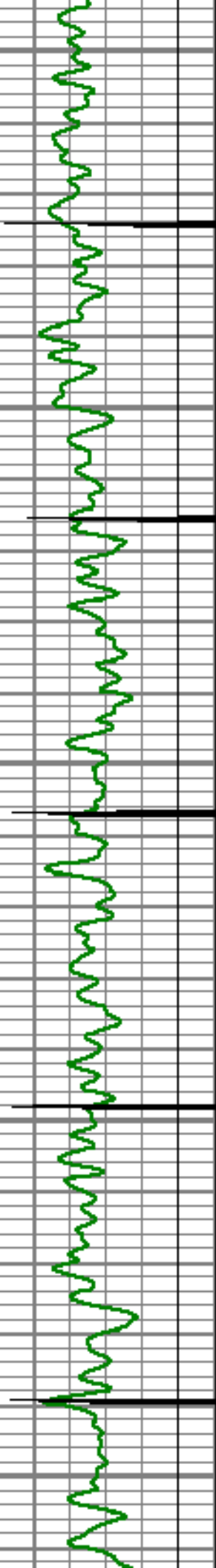
6050

6100

6150

6200





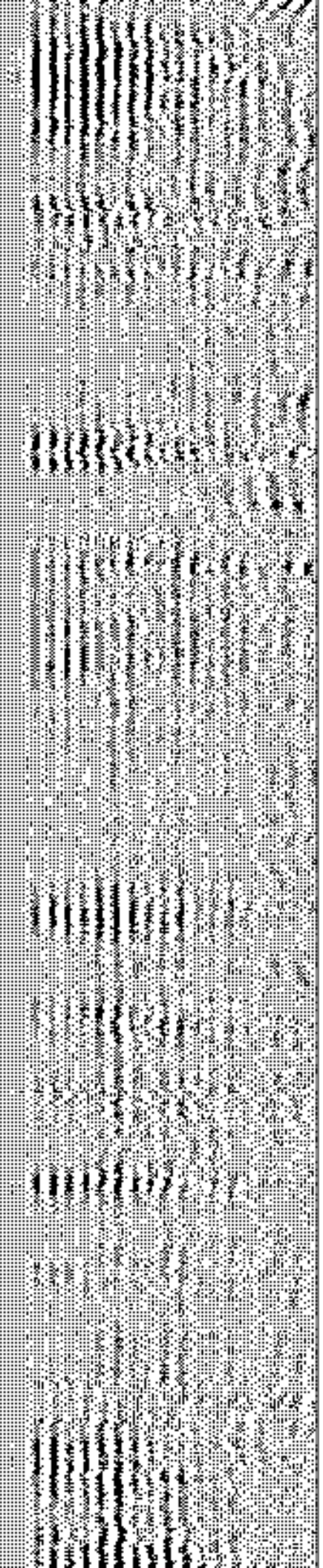
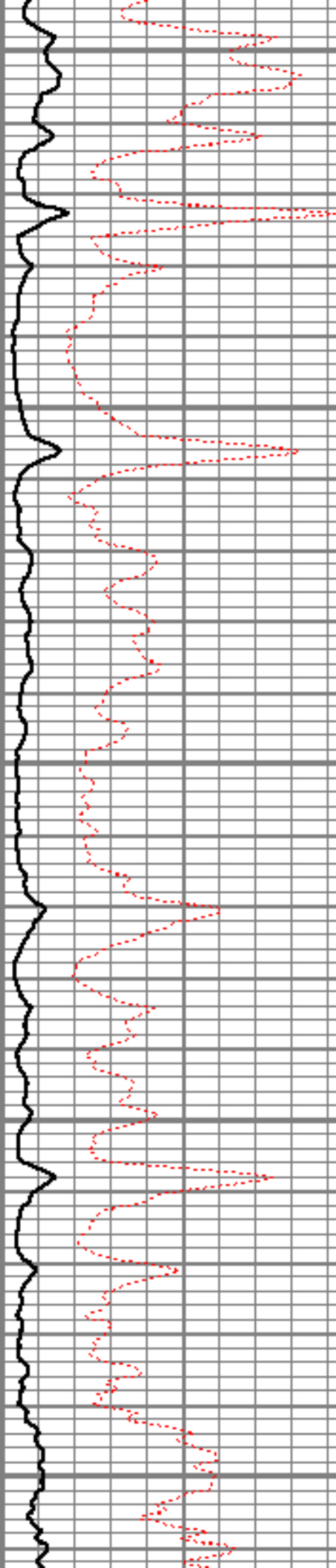
6250

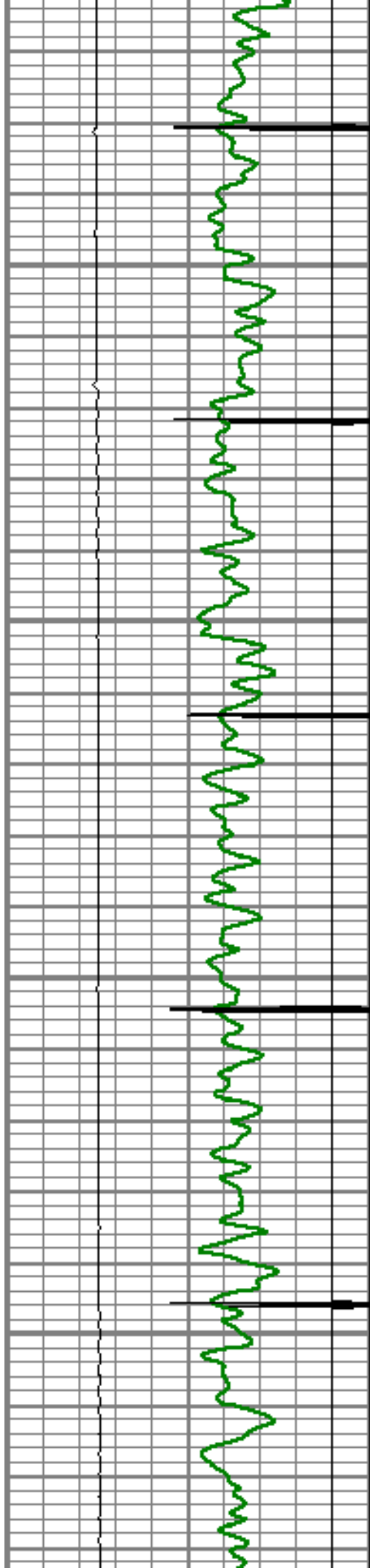
6300

6350

6400

6450



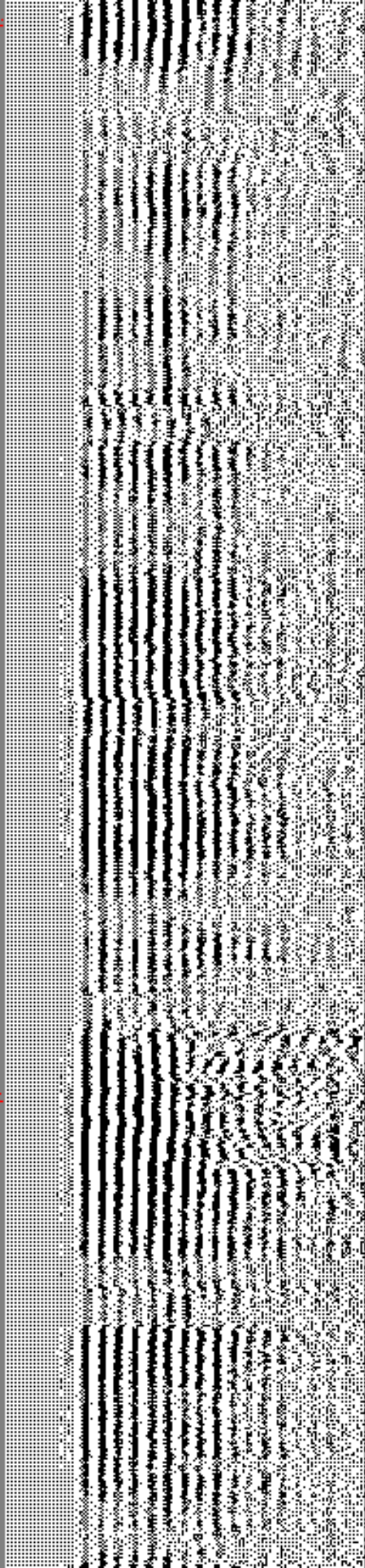
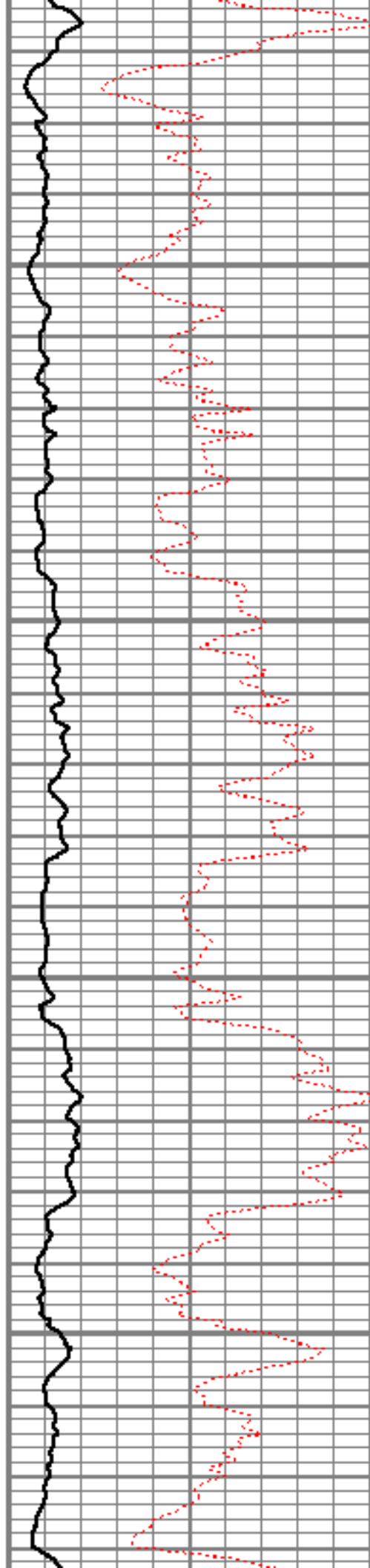


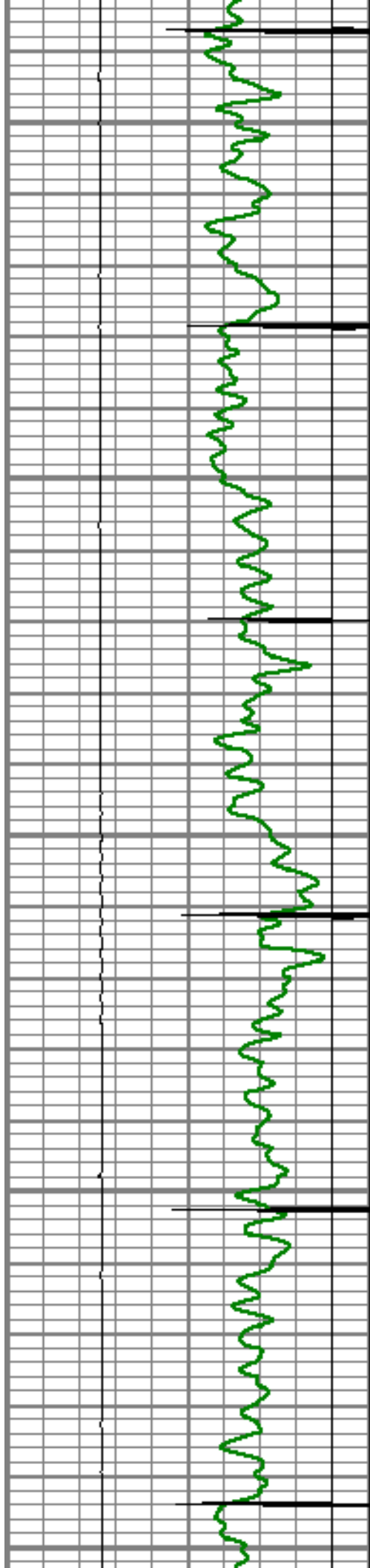
6500

6550

6600

6650





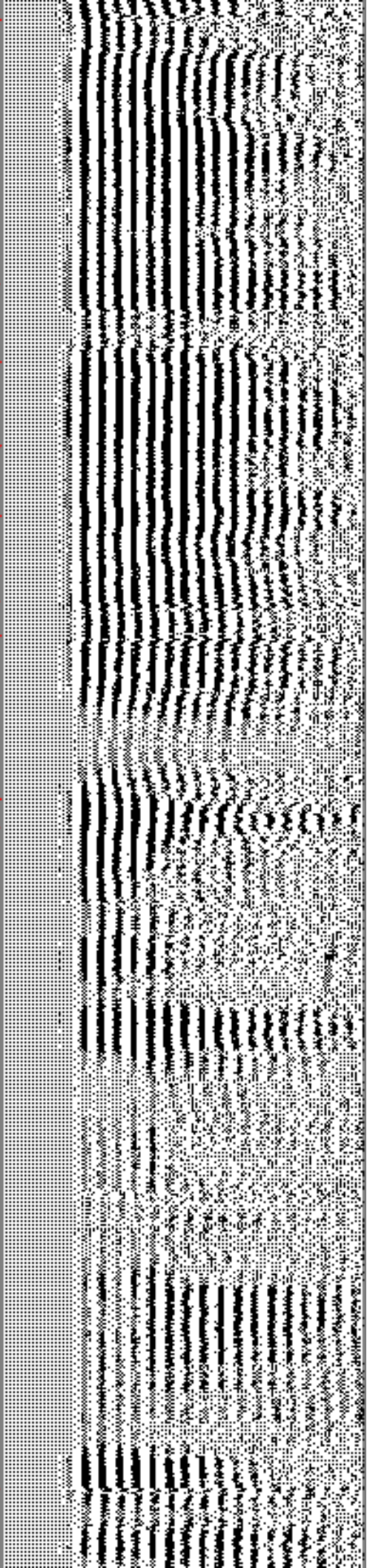
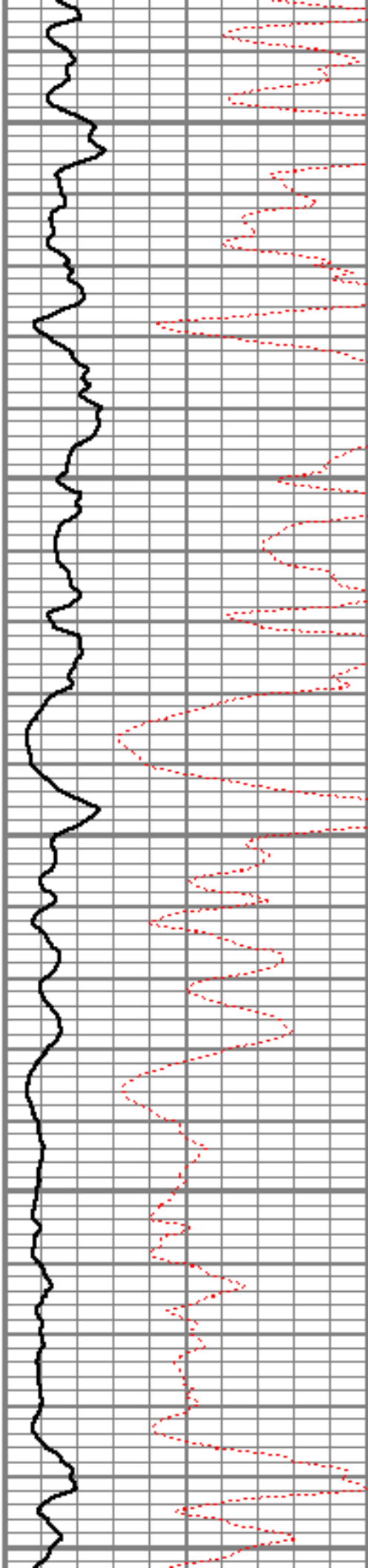
6700

6750

6800

6850

6900

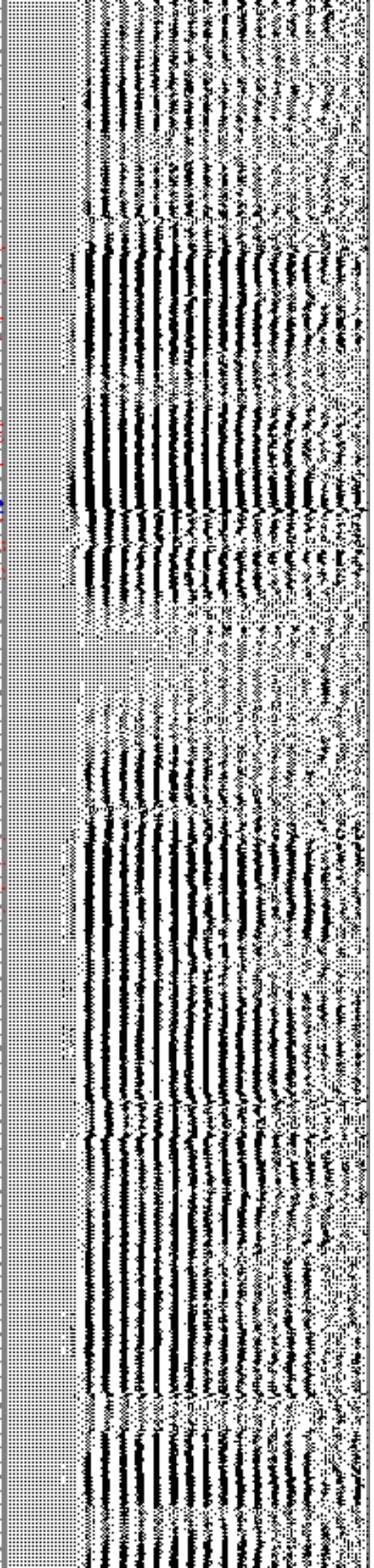
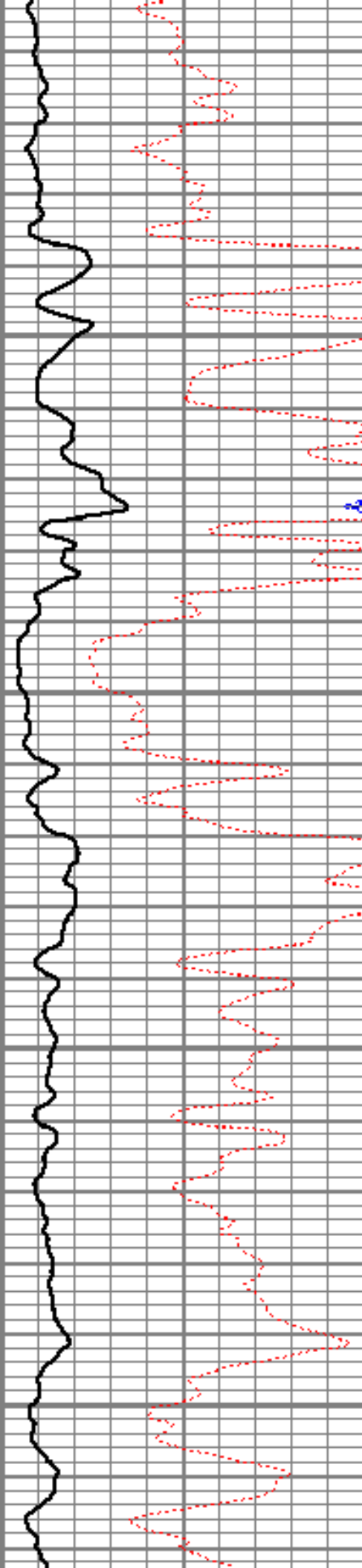
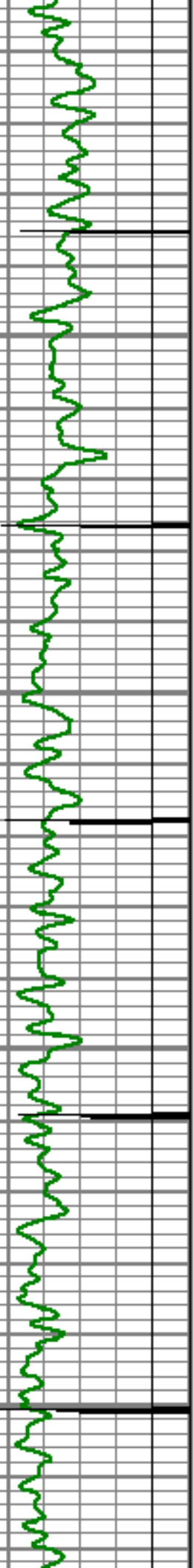


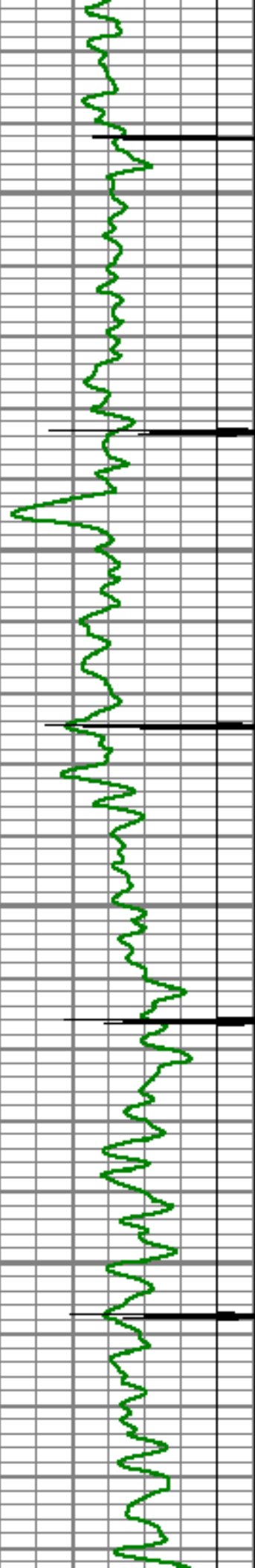
6950

7000

7050

7100



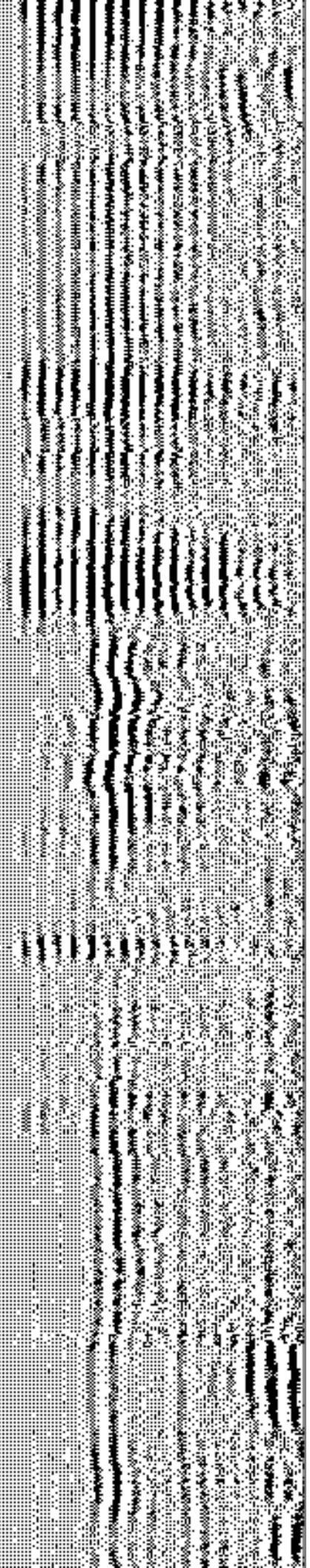
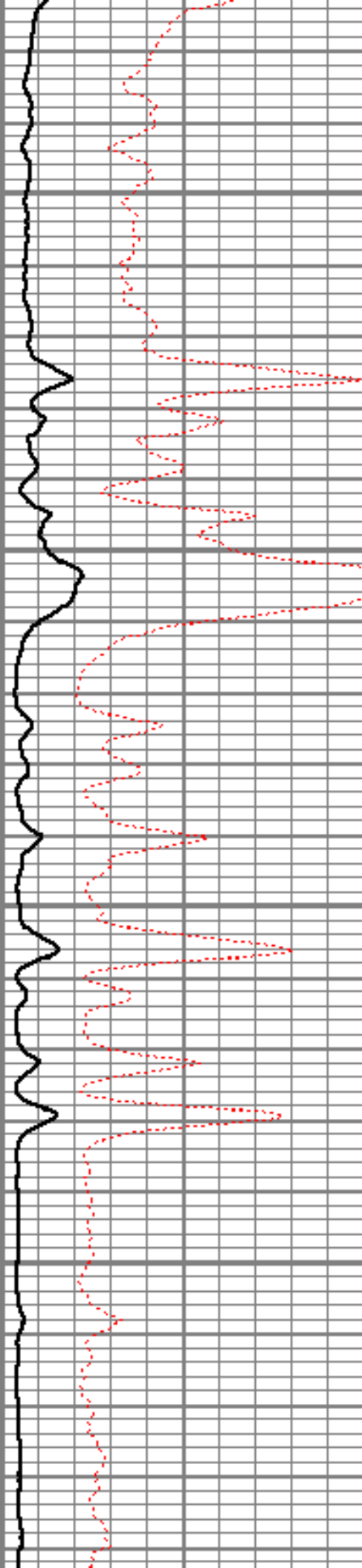


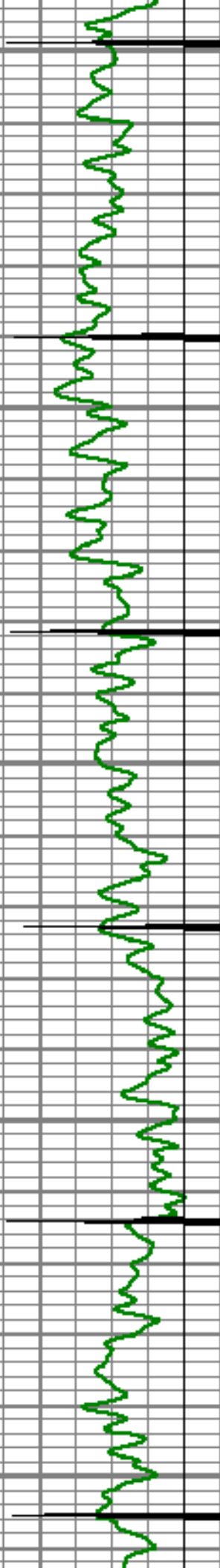
7150

7200

7250

7300





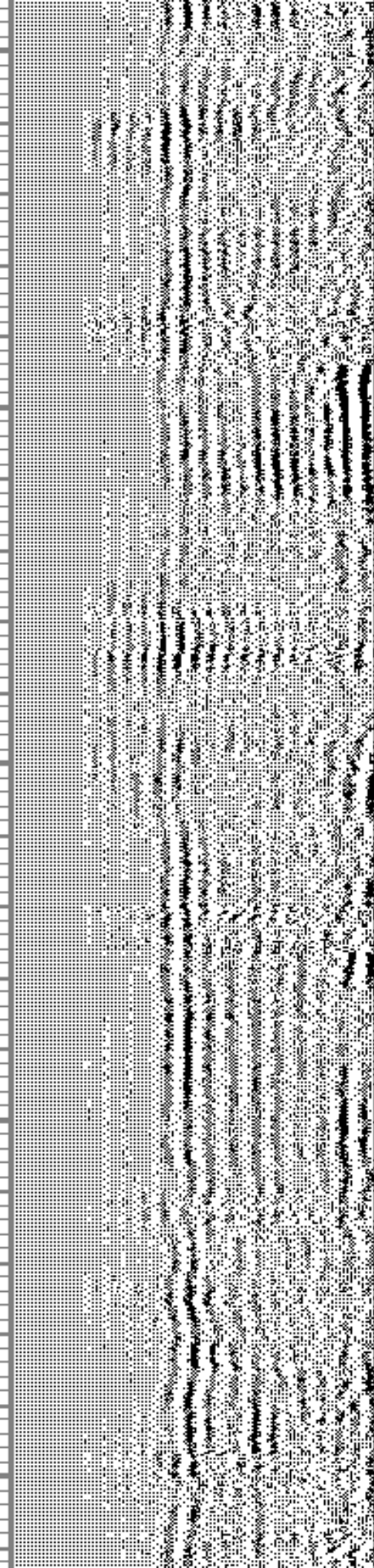
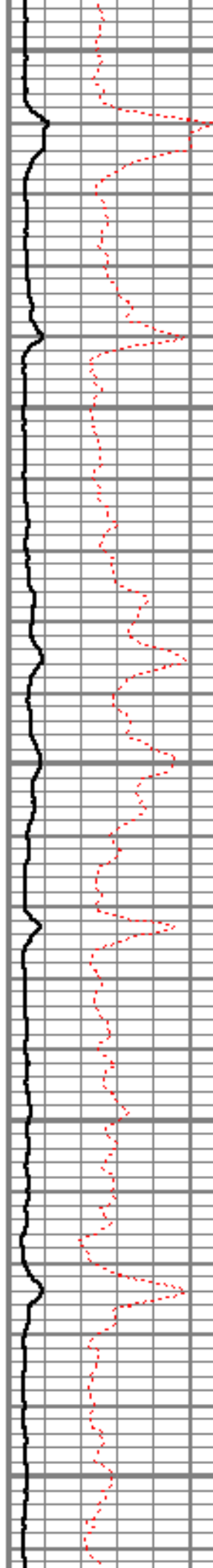
7350

7400

7450

7500

7550



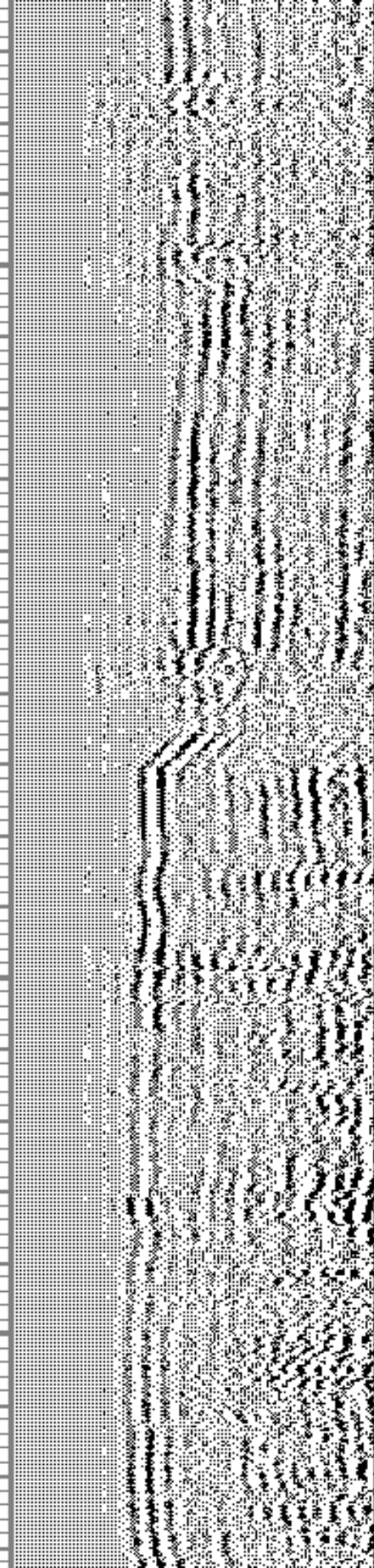
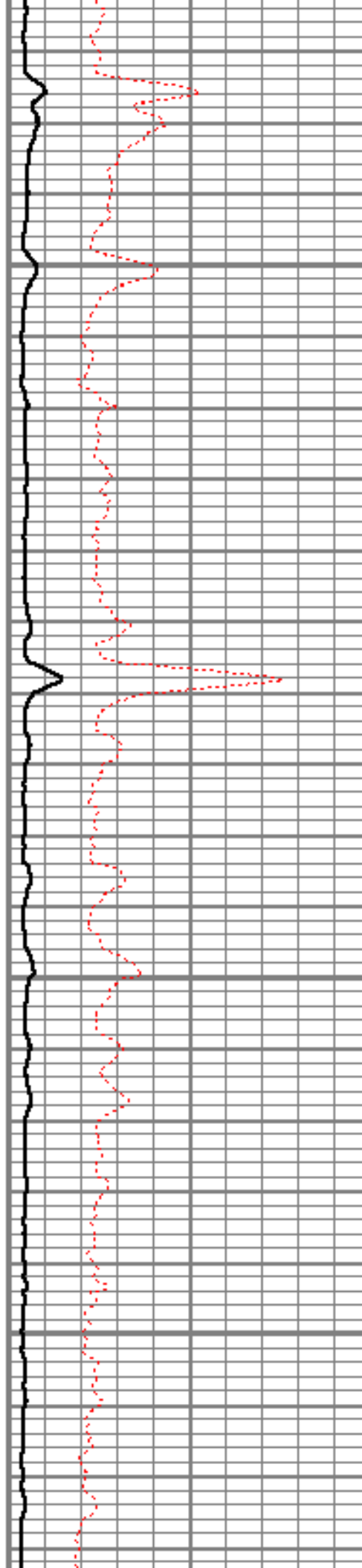
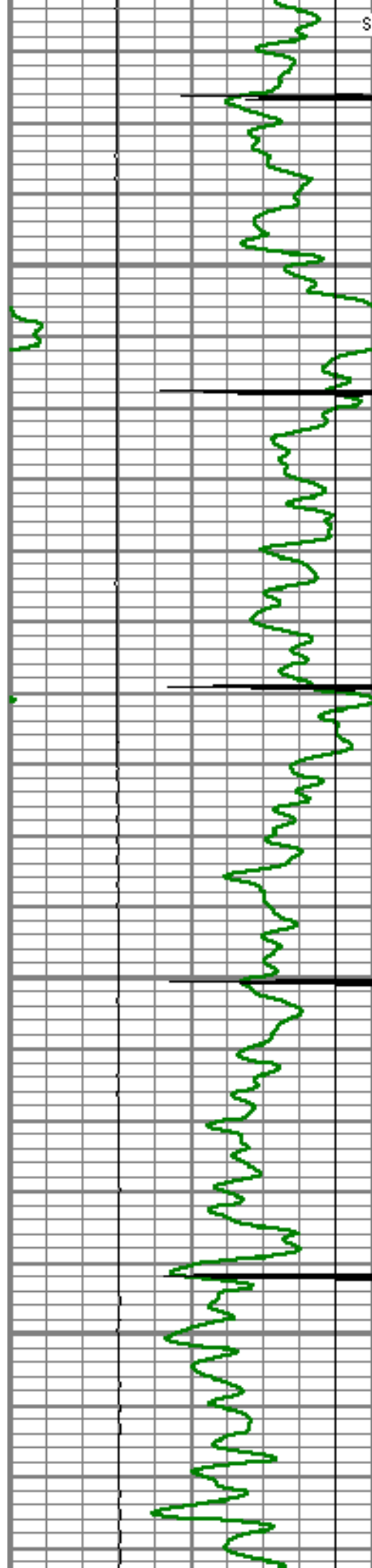
SHORT JOINT

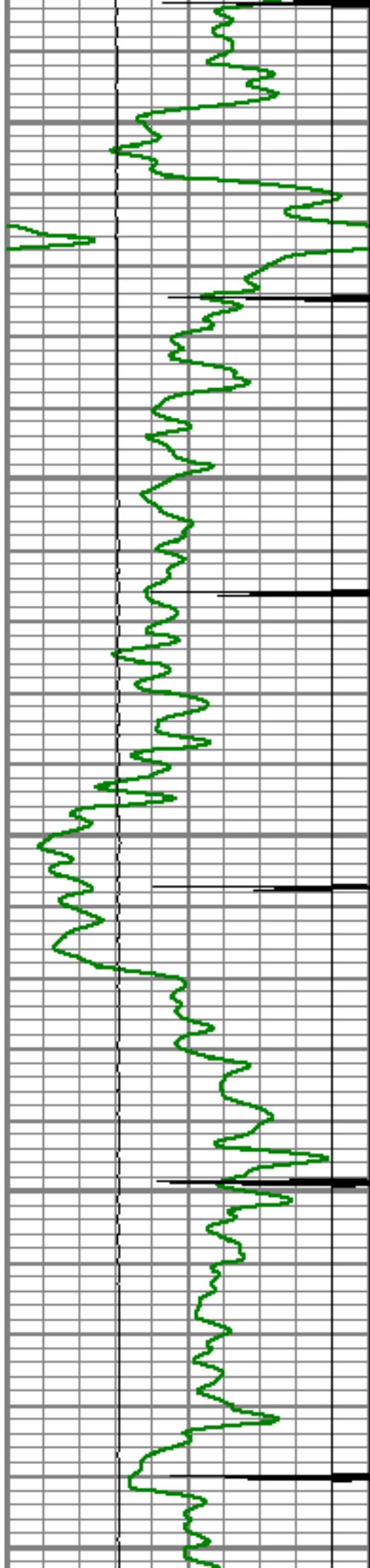
7600

7650

7700

7750





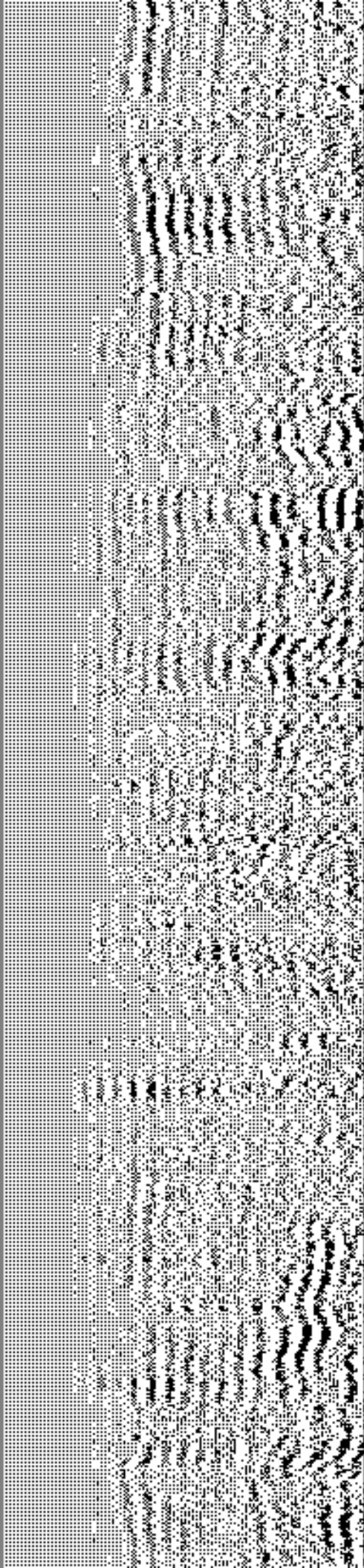
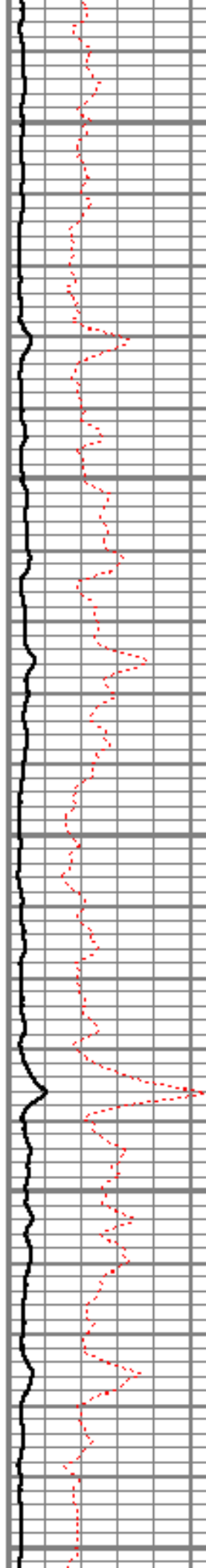
7800

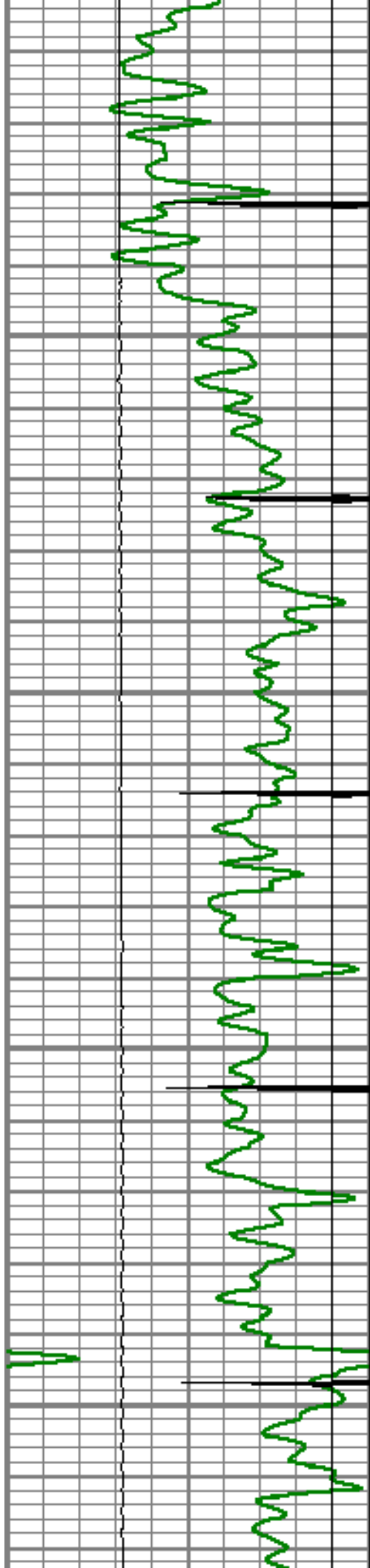
7850

7900

7950

8000



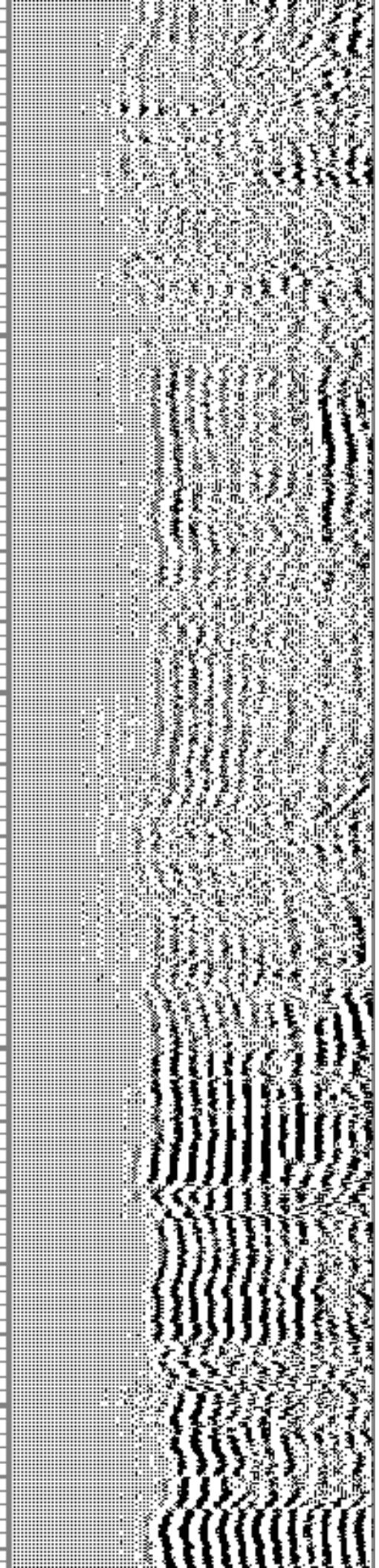
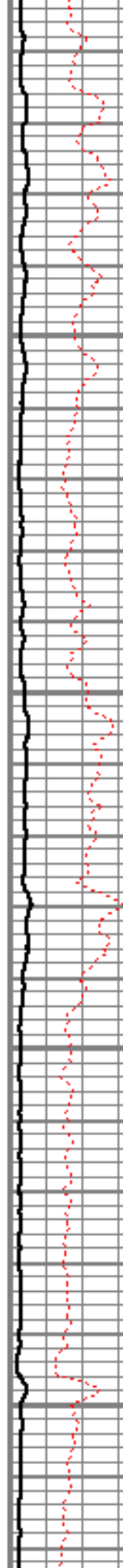


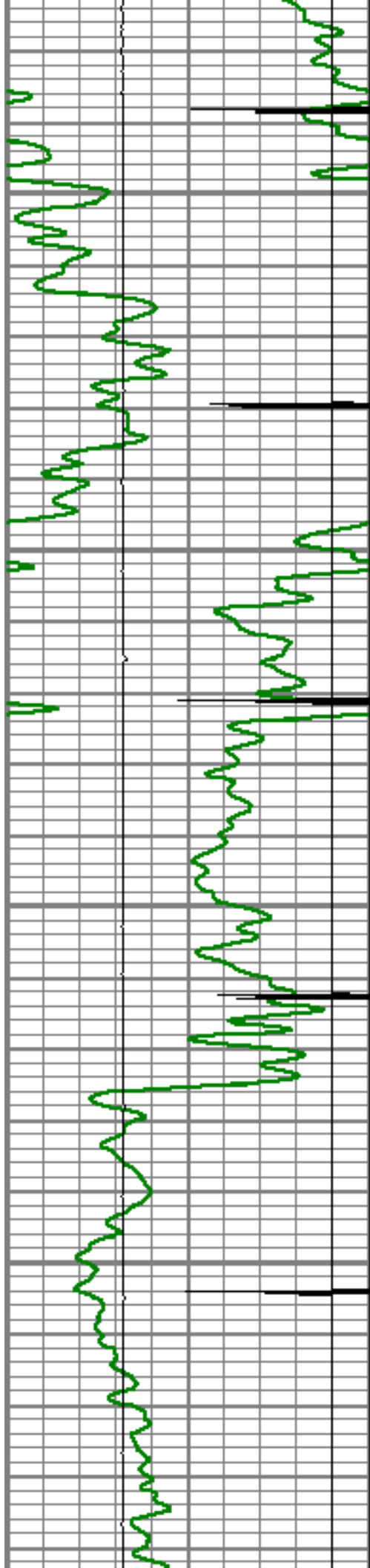
8050

8100

8150

8200



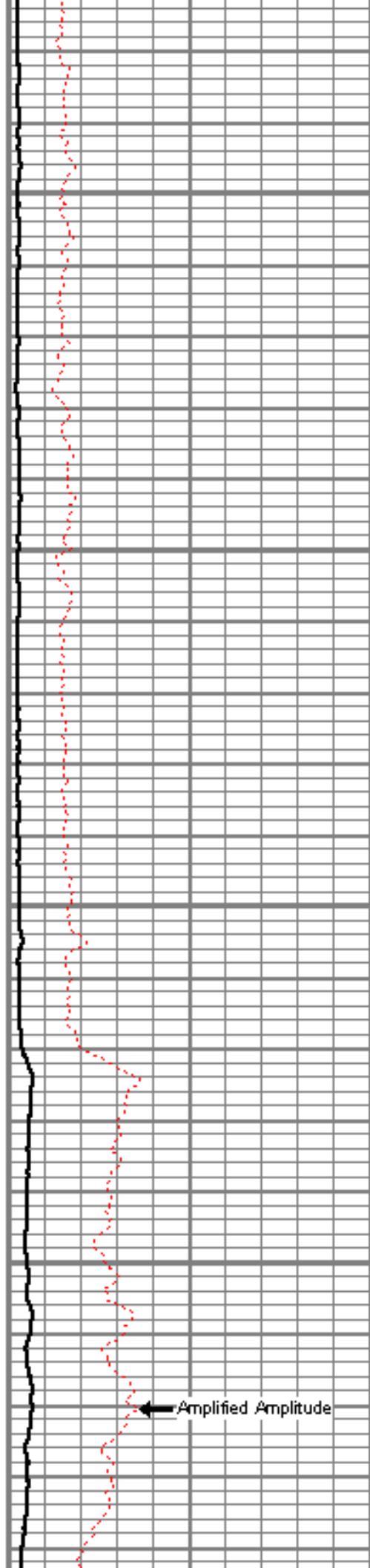


8250

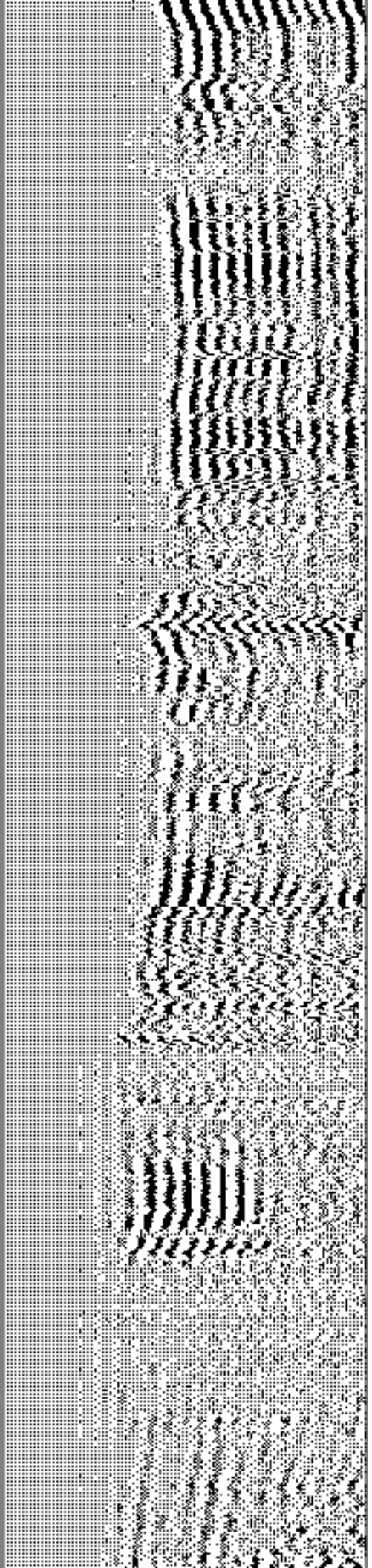
8300

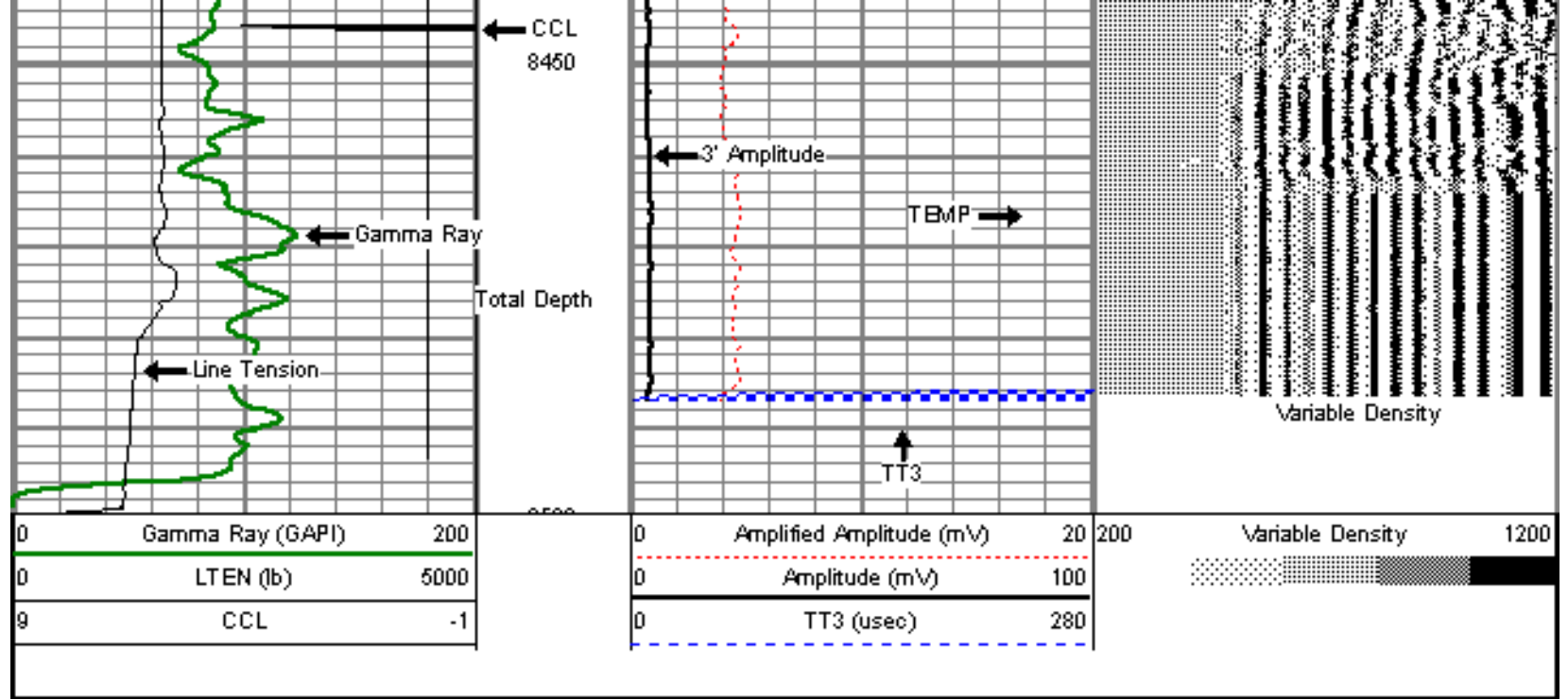
8350

8400



← Amplified Amplitude





Sensor	Offset (ft)	Schematic	Description	Len (ft)	OD (in)	Wt (lb)
			titan Titan Cable Head Go Pin.	1.02	1.44	1.50
			Centralizer-Probe (CENT-PROBE-1) Probe Bowspring Centralizer	2.88	2.75	10.00
WVF3	13.54		CBL-PRB_CBL_DIGITAL (PRB_CBL_DIG_28.7714) Probe 2.75" Dial Receiver Bond	28.7714	2.75	60.00
WVF5	12.54					
			Centralizer-Probe (CENT-PROBE-2) Probe Bowspring Centralizer	2.88	2.75	10.00

