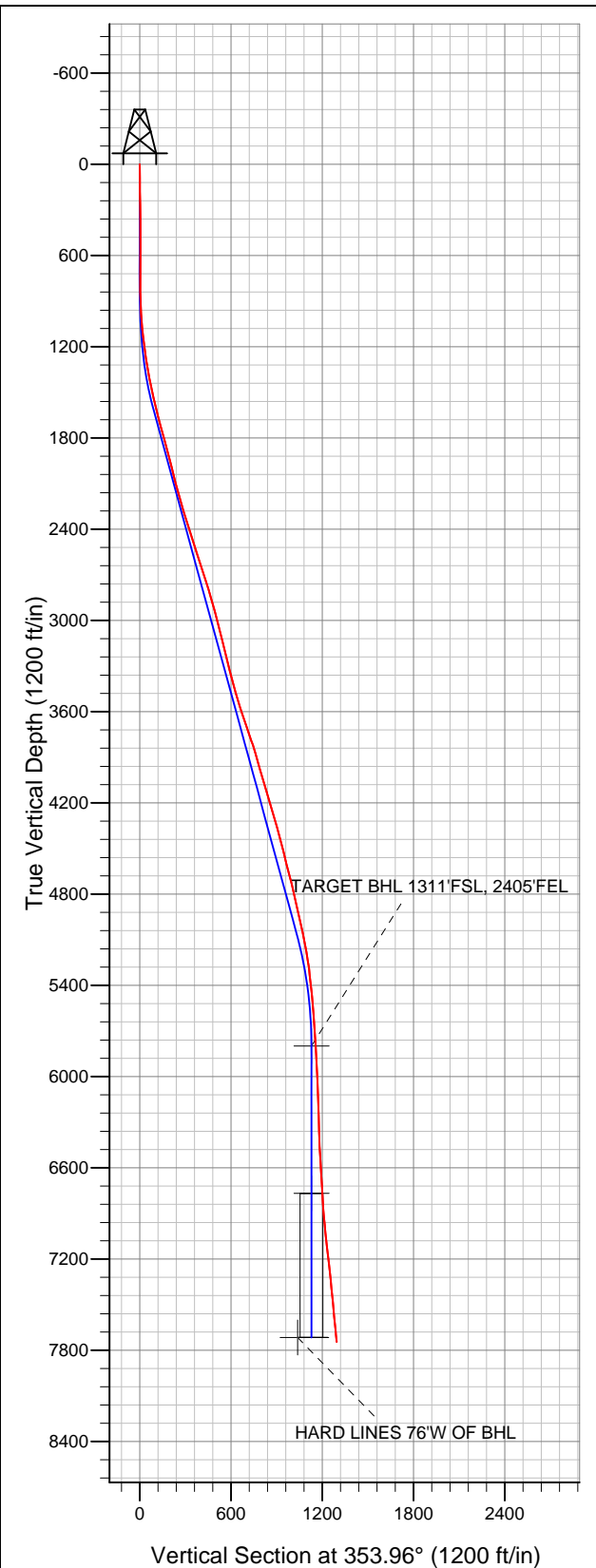


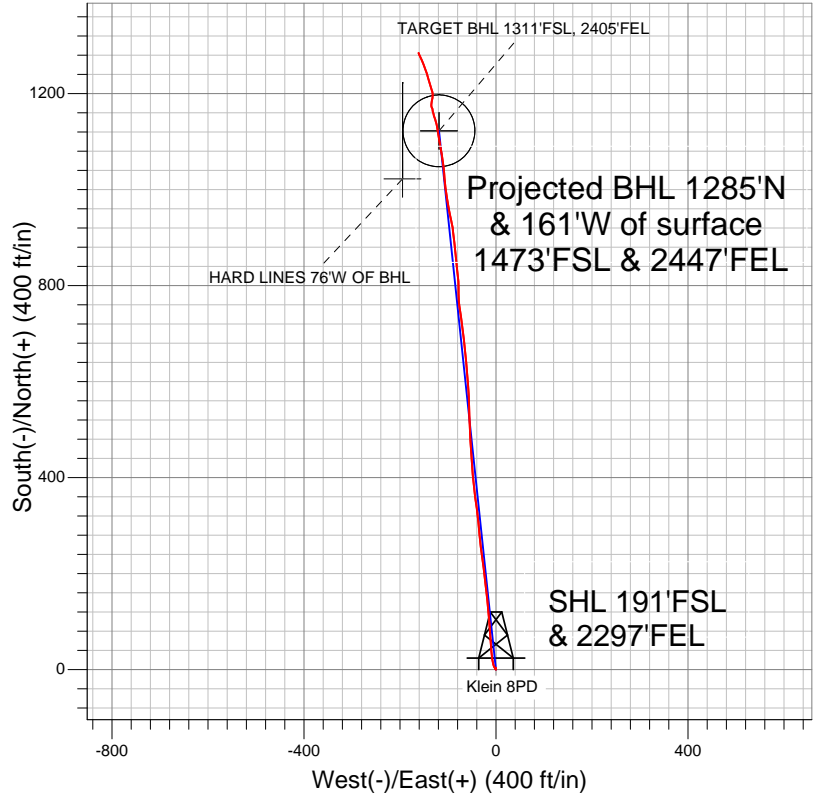
# Well Name: Klein 8PD

Surface Location: Klein 44-8D Pad Sec.8-T4N-R67W  
 North American Datum 1983 US State Plane 1983Colorado Northern Zone  
 Ground Elevation: 4794.0

+N/-S	+E/-W	Northing	Easting	Latitude	Longitude	Slot
0.0	0.0	1360244.15	3163334.11	40.320790	-104.914224	
		Original Well Elev WELL @ 4806.0ft (Original Well Elev)				



## Synergy Resources



### LEGEND

- Survey #1
- Klein 8PD, Wellbore #1, Plan #2 (1-04-12) V0
- Wellbore #1

## Final Survey Plot

Projected Final Survey -  
 7899'MD & 7744'TVD @ 1294'VS  
 6 deg Inc 336.90 deg AZ

Project: SEC.8-T4N-R67W  
 Site: Klein 44-8D Pad Sec.8-T4N-R67W  
 Well: Klein 8PD  
 Plan: Wellbore #1



## **Synergy Resources**

**SEC.8-T4N-R67W**

**Klein 44-8D Pad Sec.8-T4N-R67W**

**Klein 8PD**

**Wellbore #1**

**Survey: Survey #1**

## **Standard Survey Report**

**12 January, 2012**

<b>Company:</b>	Synergy Resources	<b>Local Co-ordinate Reference:</b>	Well Klein 8PD
<b>Project:</b>	SEC.8-T4N-R67W	<b>TVD Reference:</b>	WELL @ 4806.0ft (Original Well Elev)
<b>Site:</b>	Klein 44-8D Pad Sec.8-T4N-R67W	<b>MD Reference:</b>	WELL @ 4806.0ft (Original Well Elev)
<b>Well:</b>	Klein 8PD	<b>North Reference:</b>	True
<b>Wellbore:</b>	Wellbore #1	<b>Survey Calculation Method:</b>	Minimum Curvature
<b>Design:</b>	Wellbore #1	<b>Database:</b>	Landmark

<b>Project</b>	SEC.8-T4N-R67W, Weld County, Colorado		
<b>Map System:</b>	US State Plane 1983	<b>System Datum:</b>	Mean Sea Level
<b>Geo Datum:</b>	North American Datum 1983		Using Well Reference Point
<b>Map Zone:</b>	Colorado Northern Zone		Using geodetic scale factor

Site		Klein 44-8D Pad Sec.8-T4N-R67W			
Site Position:		Northing:	1,360,242.64 ft	Latitude:	40.320784
From:	Lat/Long	Easting:	3,163,433.95 ft	Longitude:	-104.913866
Position Uncertainty:	0.0 ft	Slot Radius:	"	Grid Convergence:	0.38 °

Well	Klein 8PD					
Well Position	+N/-S	0.0 ft	Northing:	1,360,244.15 ft	Latitude:	40.320790
	+E/-W	0.0 ft	Easting:	3,163,334.11 ft	Longitude:	-104.914224
Position Uncertainty		0.0 ft	Wellhead Elevation:	ft	Ground Level:	4,794.0 ft

Wellbore	Wellbore #1				
Magnetics	Model Name	Sample Date	Declination (°)	Dip Angle (°)	Field Strength (nT)
	IGRF2010	1/3/2012	8.86	66.94	53,016

Design	Wellbore #1			
Audit Notes:				
Version:	1.0	Phase:	ACTUAL	Tie On Depth: 0.0
Vertical Section:	Depth From (TVD) (ft)	+N/-S (ft)	+E/-W (ft)	Direction (°)
	0.0	0.0	0.0	353.96

Survey Program		Date	1/12/2012		
From (ft)	To (ft)	Survey (Wellbore)	Tool Name	Description	
90.0	7,899.0	Survey #1 (Wellbore #1)	MWD	MWD - Standard	

Survey										
	Measured Depth (ft)	Inclination (°)	Azimuth (°)	Vertical Depth (ft)	+N/-S (ft)	+E/-W (ft)	Vertical Section (ft)	Dogleg Rate (°/100ft)	Build Rate (°/100ft)	Turn Rate (°/100ft)
Main Survey	0.0	0.00	0.00	0.0	0.0	0.0	0.0	0.00	0.00	0.00
	90.0	0.80	312.60	90.0	0.4	-0.5	0.5	0.89	0.89	0.00
	180.0	0.90	297.10	180.0	1.2	-1.6	1.3	0.28	0.11	-17.22
	270.0	0.50	28.40	270.0	1.8	-2.0	2.0	1.15	-0.44	101.44
	361.0	0.70	26.10	361.0	2.7	-1.6	2.8	0.22	0.22	-2.53
	453.0	0.70	33.80	453.0	3.7	-1.0	3.7	0.10	0.00	8.37
	536.0	0.40	209.30	536.0	3.8	-0.9	3.9	1.32	-0.36	211.45
	610.0	0.50	164.80	610.0	3.3	-0.9	3.4	0.48	0.14	-60.14
	703.0	0.50	181.80	703.0	2.5	-0.8	2.6	0.16	0.00	18.28
	797.0	0.50	290.80	797.0	2.2	-1.2	2.3	0.87	0.00	115.96
	890.0	2.30	323.30	889.9	3.9	-2.7	4.1	2.04	1.94	34.95
	984.0	3.60	342.50	983.8	8.2	-4.7	8.6	1.72	1.38	20.43
1,078.0	5.40	348.60	1,077.5	15.3	-6.5	15.9	1.98	1.91	6.49	

<b>Company:</b>	Synergy Resources	<b>Local Co-ordinate Reference:</b>	Well Klein 8PD
<b>Project:</b>	SEC.8-T4N-R67W	<b>TVD Reference:</b>	WELL @ 4806.0ft (Original Well Elev)
<b>Site:</b>	Klein 44-8D Pad Sec.8-T4N-R67W	<b>MD Reference:</b>	WELL @ 4806.0ft (Original Well Elev)
<b>Well:</b>	Klein 8PD	<b>North Reference:</b>	True
<b>Wellbore:</b>	Wellbore #1	<b>Survey Calculation Method:</b>	Minimum Curvature
<b>Design:</b>	Wellbore #1	<b>Database:</b>	Landmark

Survey										
Measured Depth (ft)	Inclination (°)	Azimuth (°)	Vertical Depth (ft)	+N/-S (ft)	+E/-W (ft)	Vertical Section (ft)	Dogleg Rate (°/100ft)	Build Rate (°/100ft)	Turn Rate (°/100ft)	
1,172.0	6.80	352.30	1,171.0	25.2	-8.1	25.9	1.55	1.49	3.94	
1,265.0	8.40	354.30	1,263.2	37.4	-9.5	38.2	1.74	1.72	2.15	
1,359.0	10.50	356.20	1,355.9	52.8	-10.8	53.6	2.26	2.23	2.02	
1,453.0	11.70	356.00	1,448.1	70.9	-12.0	71.7	1.28	1.28	-0.21	
1,546.0	12.80	358.00	1,539.0	90.6	-13.0	91.4	1.27	1.18	2.15	
1,640.0	14.00	352.50	1,630.4	112.2	-14.9	113.2	1.86	1.28	-5.85	
1,734.0	15.20	353.90	1,721.4	135.8	-17.7	136.9	1.33	1.28	1.49	
1,827.0	15.50	355.10	1,811.1	160.3	-20.0	161.5	0.47	0.32	1.29	
1,921.0	15.10	354.10	1,901.8	185.0	-22.3	186.3	0.51	-0.43	-1.06	
2,015.0	14.00	352.00	1,992.7	208.4	-25.2	209.9	1.30	-1.17	-2.23	
2,109.0	14.30	352.00	2,083.9	231.2	-28.4	232.9	0.32	0.32	0.00	
2,202.0	15.70	353.00	2,173.7	255.0	-31.5	256.9	1.53	1.51	1.08	
2,296.0	15.60	354.60	2,264.2	280.2	-34.3	282.3	0.47	-0.11	1.70	
2,390.0	17.50	354.40	2,354.3	306.9	-36.8	309.0	2.02	2.02	-0.21	
2,483.0	18.50	352.70	2,442.8	335.4	-40.1	337.8	1.21	1.08	-1.83	
2,577.0	17.90	352.00	2,532.1	364.5	-44.0	367.1	0.68	-0.64	-0.74	
2,671.0	17.80	355.70	2,621.6	393.2	-47.1	395.9	1.21	-0.11	3.94	
2,765.0	17.80	355.70	2,711.1	421.8	-49.2	424.7	0.00	0.00	0.00	
2,858.0	16.60	354.60	2,799.9	449.2	-51.5	452.1	1.34	-1.29	-1.18	
2,952.0	15.20	358.30	2,890.3	474.9	-53.2	477.9	1.84	-1.49	3.94	
3,045.0	15.60	356.90	2,980.0	499.6	-54.2	502.5	0.59	0.43	-1.51	
3,139.0	14.50	359.70	3,070.7	524.0	-54.9	526.8	1.40	-1.17	2.98	
3,233.0	14.40	356.60	3,161.8	547.4	-55.7	550.2	0.83	-0.11	-3.30	
3,326.0	13.50	358.00	3,252.0	569.8	-56.8	572.6	1.03	-0.97	1.51	
3,420.0	13.90	356.40	3,343.3	592.0	-57.8	594.8	0.59	0.43	-1.70	
3,514.0	14.70	353.90	3,434.4	615.2	-59.8	618.0	1.07	0.85	-2.66	
3,607.0	17.60	355.70	3,523.8	640.9	-62.1	643.9	3.16	3.12	1.94	
3,701.0	18.50	353.90	3,613.1	669.9	-64.8	673.0	1.13	0.96	-1.91	
3,794.0	19.20	352.50	3,701.1	699.8	-68.3	703.1	0.90	0.75	-1.51	
3,888.0	18.60	352.00	3,790.1	729.9	-72.5	733.5	0.66	-0.64	-0.53	
3,982.0	16.00	352.70	3,879.8	757.6	-76.2	761.4	2.77	-2.77	0.74	
4,075.0	15.40	0.60	3,969.4	782.7	-77.7	786.5	2.39	-0.65	8.49	
4,169.0	16.80	356.20	4,059.7	808.7	-78.5	812.5	1.97	1.49	-4.68	
4,263.0	17.20	353.20	4,149.6	836.1	-81.0	840.0	1.03	0.43	-3.19	
4,356.0	17.00	354.10	4,238.5	863.3	-84.0	867.3	0.36	-0.22	0.97	
4,450.0	15.40	354.10	4,328.7	889.3	-86.7	893.5	1.70	-1.70	0.00	
4,544.0	14.70	353.20	4,419.5	913.6	-89.4	917.9	0.79	-0.74	-0.96	
4,637.0	13.30	347.20	4,509.7	935.7	-93.2	940.4	2.17	-1.51	-6.45	
4,731.0	14.70	348.50	4,600.9	958.0	-98.0	963.0	1.53	1.49	1.38	
4,825.0	15.00	352.00	4,691.8	981.7	-102.0	987.0	1.01	0.32	3.72	
4,919.0	13.40	352.70	4,782.9	1,004.6	-105.1	1,010.0	1.71	-1.70	0.74	
5,012.0	12.00	356.40	4,873.6	1,024.9	-107.1	1,030.5	1.74	-1.51	3.98	
5,106.0	13.40	352.30	4,965.3	1,045.5	-109.2	1,051.1	1.77	1.49	-4.36	
5,200.0	12.00	352.30	5,057.0	1,065.9	-111.9	1,071.8	1.49	-1.49	0.00	
5,293.0	10.40	350.60	5,148.3	1,083.8	-114.6	1,089.8	1.76	-1.72	-1.83	
5,387.0	8.40	349.50	5,241.0	1,098.9	-117.2	1,105.2	2.14	-2.13	-1.17	
5,481.0	6.80	348.60	5,334.2	1,111.1	-119.6	1,117.5	1.71	-1.70	-0.96	
5,575.0	6.00	348.50	5,427.6	1,121.4	-121.7	1,128.0	0.85	-0.85	-0.11	
5,668.0	4.70	356.70	5,520.2	1,130.0	-122.8	1,136.6	1.62	-1.40	8.82	
5,762.0	4.00	343.90	5,613.9	1,137.0	-124.0	1,143.7	1.27	-0.74	-13.62	
5,856.0	4.20	344.30	5,707.7	1,143.4	-125.8	1,150.3	0.21	0.21	0.43	
5,946.7	3.14	342.11	5,798.2	1,149.0	-127.5	1,156.0	1.18	-1.17	-2.42	
TARGET BHL 1311'FSL, 2405'FEL										
5,950.0	3.10	342.00	5,801.5	1,149.2	-127.5	1,156.2	1.18	-1.17	-3.27	

<b>Company:</b>	Synergy Resources	<b>Local Co-ordinate Reference:</b>	Well Klein 8PD
<b>Project:</b>	SEC.8-T4N-R67W	<b>TVD Reference:</b>	WELL @ 4806.0ft (Original Well Elev)
<b>Site:</b>	Klein 44-8D Pad Sec.8-T4N-R67W	<b>MD Reference:</b>	WELL @ 4806.0ft (Original Well Elev)
<b>Well:</b>	Klein 8PD	<b>North Reference:</b>	True
<b>Wellbore:</b>	Wellbore #1	<b>Survey Calculation Method:</b>	Minimum Curvature
<b>Design:</b>	Wellbore #1	<b>Database:</b>	Landmark

Survey										
Measured Depth (ft)	Inclination (°)	Azimuth (°)	Vertical Depth (ft)	+N/-S (ft)	+E/-W (ft)	Vertical Section (ft)	Dogleg Rate (°/100ft)	Build Rate (°/100ft)	Turn Rate (°/100ft)	
6,043.0	2.90	342.70	5,894.4	1,153.8	-129.0	1,161.0	0.22	-0.22	0.75	
6,137.0	3.40	346.50	5,988.2	1,158.8	-130.4	1,166.1	0.58	0.53	4.04	
6,231.0	1.80	345.10	6,082.1	1,162.9	-131.4	1,170.3	1.70	-1.70	-1.49	
6,325.0	1.30	352.30	6,176.1	1,165.4	-131.9	1,172.8	0.57	-0.53	7.66	
6,418.0	2.00	349.90	6,269.0	1,168.0	-132.3	1,175.5	0.76	0.75	-2.58	
6,512.0	1.90	324.70	6,363.0	1,170.9	-133.5	1,178.5	0.91	-0.11	-26.81	
6,606.0	3.00	355.10	6,456.9	1,174.6	-134.6	1,182.3	1.77	1.17	32.34	
6,700.0	3.40	12.40	6,550.8	1,179.8	-134.3	1,187.4	1.11	0.43	18.40	
6,793.0	3.40	7.10	6,643.6	1,185.2	-133.3	1,192.7	0.34	0.00	-5.70	
6,887.0	3.60	11.10	6,737.4	1,190.9	-132.4	1,198.2	0.34	0.21	4.26	
6,913.4	3.56	8.65	6,763.8	1,192.5	-132.1	1,199.8	0.60	-0.14	-9.27	
TARGET CIRCLE 1311'FSL, 2405'FEL										
6,981.0	3.50	2.20	6,831.2	1,196.7	-131.7	1,203.9	0.60	-0.09	-9.55	
7,075.0	4.90	345.70	6,925.0	1,203.4	-132.6	1,210.7	1.95	1.49	-17.55	
7,168.0	6.10	342.50	7,017.6	1,212.0	-135.1	1,219.5	1.33	1.29	-3.44	
7,262.0	6.60	343.90	7,111.0	1,221.9	-138.1	1,229.7	0.56	0.53	1.49	
7,356.0	6.30	343.20	7,204.4	1,232.1	-141.1	1,240.1	0.33	-0.32	-0.74	
7,449.0	6.00	342.00	7,296.9	1,241.6	-144.0	1,249.8	0.35	-0.32	-1.29	
7,543.0	6.10	341.30	7,390.3	1,251.0	-147.2	1,259.5	0.13	0.11	-0.74	
7,637.0	5.90	337.90	7,483.8	1,260.2	-150.6	1,269.0	0.43	-0.21	-3.62	
7,733.0	5.60	335.80	7,579.3	1,269.0	-154.4	1,278.2	0.38	-0.31	-2.19	
7,827.0	6.00	335.60	7,672.8	1,277.7	-158.3	1,287.3	0.43	0.43	-0.21	
7,847.0	6.00	336.53	7,692.8	1,279.6	-159.1	1,289.2	0.49	0.00	4.64	
HARD LINES 76'W OF BHL										
7,855.0	6.00	336.90	7,700.7	1,280.4	-159.5	1,290.0	0.49	0.00	4.64	
7,899.0	6.00	336.90	7,744.5	1,284.6	-161.3	1,294.4	0.00	0.00	0.00	

Checked By: _____	Approved By: _____	Date: _____
-------------------	--------------------	-------------