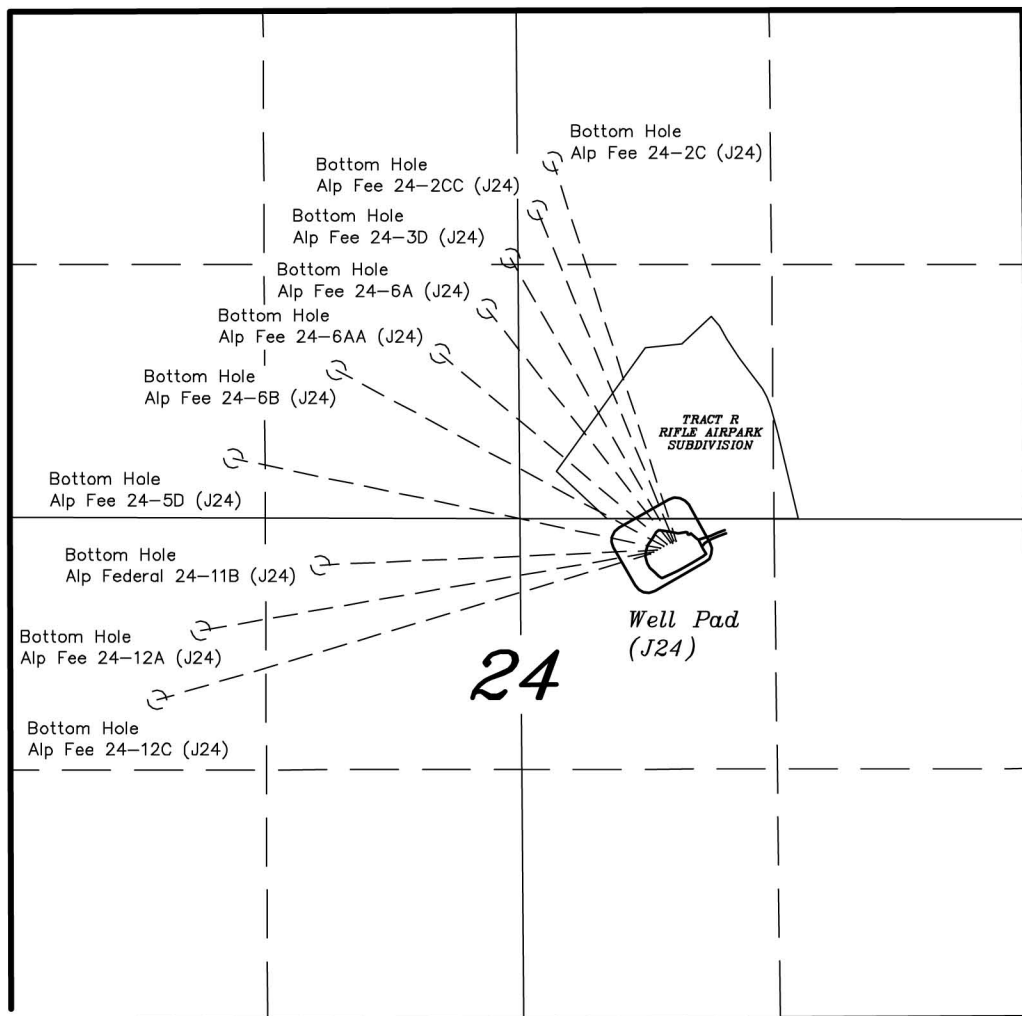


T6S, R93W, 6th P.M.

EnCana OIL & GAS (USA) INC
GENERAL MULTI WELL PLAN
SECTION DRILLING MAP
WELL PAD (J24) EXPANSION



TRI STATE LAND SURVEYING & CONSULTING

180 NORTH VERNAL AVE. — VERNAL, UTAH 84078
(435) 781-2501

DATE SURVEYED:
12-08-11

SURVEYED BY: C.D.S.

DATE DRAWN:
04-23-12

DRAWN BY: M.W.

REVISED:
M.W. — 06-26-12

SCALE: 1" = 1000'

SHEET

1

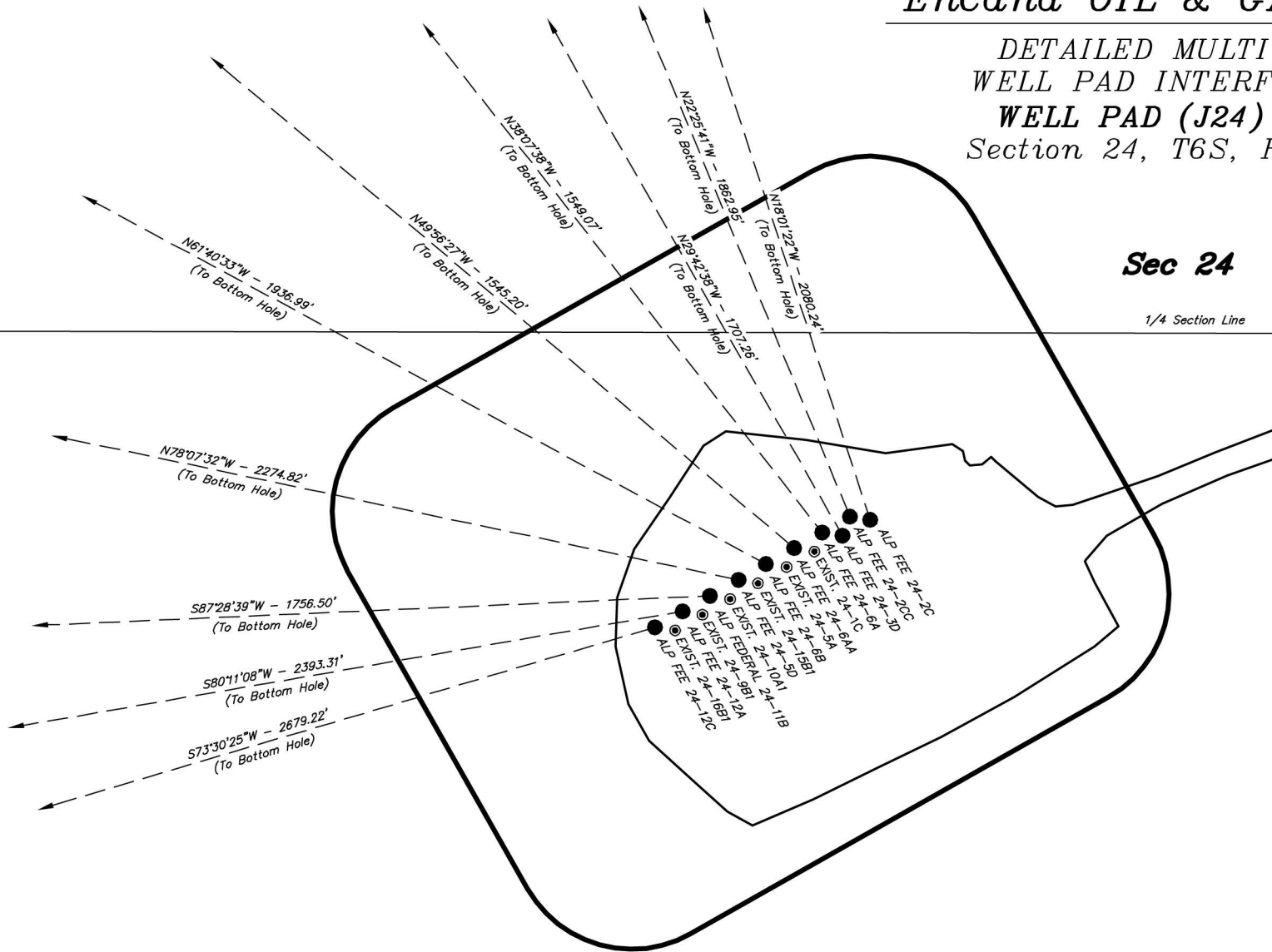
OF 11

EnCana OIL & GAS (USA) INC

DETAILED MULTI WELL PLAN WELL PAD INTERFERENCE PLAT WELL PAD (J24) EXPANSION Section 24, T6S, R93W, 6th P.M.

Sec 24

1/4 Section Line



SURVEYED BY: C.D.S.	DATE SURVEYED: 12-08-11
DRAWN BY: M.W.	DATE DRAWN: 06-05-12
SCALE: 1" = 100'	REVISED: M.W. 06-26-12

Tri State (435) 781-2501
Land Surveying, Inc.
180 NORTH VERNAL AVE. VERNAL, UTAH 84078

SHEET
3a
OF 11

EnCana OIL & GAS (USA) INC

DETAILED MULTI WELL PLAN WELL PAD INTERFERENCE PLAT WELL PAD (J24) EXPANSION Section 24, T6S, R93W, 6th P.M.

TOP HOLE FOOTAGES

*ALP FEE 24-2C (J24)
2493' FSL & 1835' FEL*

*ALP FEE 24-2CC (J24)
2495' FSL & 1847' FEL*

*ALP FEE 24-3D (J24)
2483' FSL & 1852' FEL*

*ALP FEE 24-6A (J24)
2485' FSL & 1865' FEL*

*ALP FEE 24-6AA (J24)
2476' FSL & 1882' FEL*

*ALP FEE 24-6B (J24)
2466' FSL & 1900' FEL*

*ALP FEE 24-5D (J24)
2456' FSL & 1918' FEL*

*ALP FEDERAL 24-11B (J24)
2446' FSL & 1936' FEL*

*ALP FEE 24-12A (J24)
2436' FSL & 1953' FEL*

*ALP FEE 24-12C (J24)
2426' FSL & 1970' FEL*

RELATIVE COORDINATES From top hole to bottom hole

WELL	NORTH	EAST
24-2C	1,978'	-644'
24-2CC	1,722'	-711'
24-3D	1,483'	-846'
24-6A	1,219'	-956'
24-6AA	994'	-1,183'
24-6B	919'	-1,705'
24-5D	468'	-2,226'
24-11B	-77'	-1,755'
24-12A	-408'	-2,358'
24-12C	-761'	-2,569'

BOTTOM HOLE FOOTAGES

*ALP FEE 24-2C (J24)
784' FNL & 2454' FEL*

*ALP FEE 24-2CC (J24)
1038' FNL & 2537' FWL*

*ALP FEE 24-3D (J24)
1289' FNL & 2607' FWL*

*ALP FEE 24-6A (J24)
1551' FNL & 2484' FWL*

*ALP FEE 24-6AA (J24)
1784' FNL & 2240' FWL*

*ALP FEE 24-6B (J24)
1869' FNL & 1700' FWL*

*ALP FEE 24-5D (J24)
2328' FNL & 1161' FWL*

*ALP FEDERAL 24-11B (J24)
2378' FSL & 1614' FWL*

*ALP FEE 24-12A (J24)
2041' FSL & 993' FWL*

*ALP FEE 24-12C (J24)
1679' FSL & 764' FWL*

LATITUDE & LONGITUDE Surface position of Wells (NAD 83)

WELL	LATITUDE	LONGITUDE
24-2C	39.511614°	107.721441°
24-2CC	39.511620°	107.721486°
24-3D	39.511587°	107.721503°
24-6A	39.511593°	107.721547°
24-6AA	39.511566°	107.721609°
24-6B	39.511538°	107.721672°
24-5D	39.511511°	107.721733°
24-11B	39.511484°	107.721796°
24-12A	39.511457°	107.721857°
24-12C	39.511430°	107.721918°

LATITUDE & LONGITUDE Bottom hole position of Wells (NAD 83)

WELL	LATITUDE	LONGITUDE
24-2C	39.517044°	107.723717°
24-2CC	39.516348°	107.724001°
24-3D	39.515658°	107.724498°
24-6A	39.514938°	107.724934°
24-6AA	39.514298°	107.725797°
24-6B	39.514065°	107.727712°
24-5D	39.512800°	107.729620°
24-11B	39.511276°	107.728014°
24-12A	39.510343°	107.730215°
24-12C	39.509346°	107.731021°

SURVEYED BY: C.D.S.	DATE SURVEYED: 12-08-11
DRAWN BY: M.W.	DATE DRAWN: 06-05-12
SCALE: 1" = 100'	REVISED: M.W. 06-26-12

Tri State
 Land Surveying, Inc.
 180 NORTH VERNAL AVE. VERNAL, UTAH 84078

(435) 781-2501

**SHEET
3b**