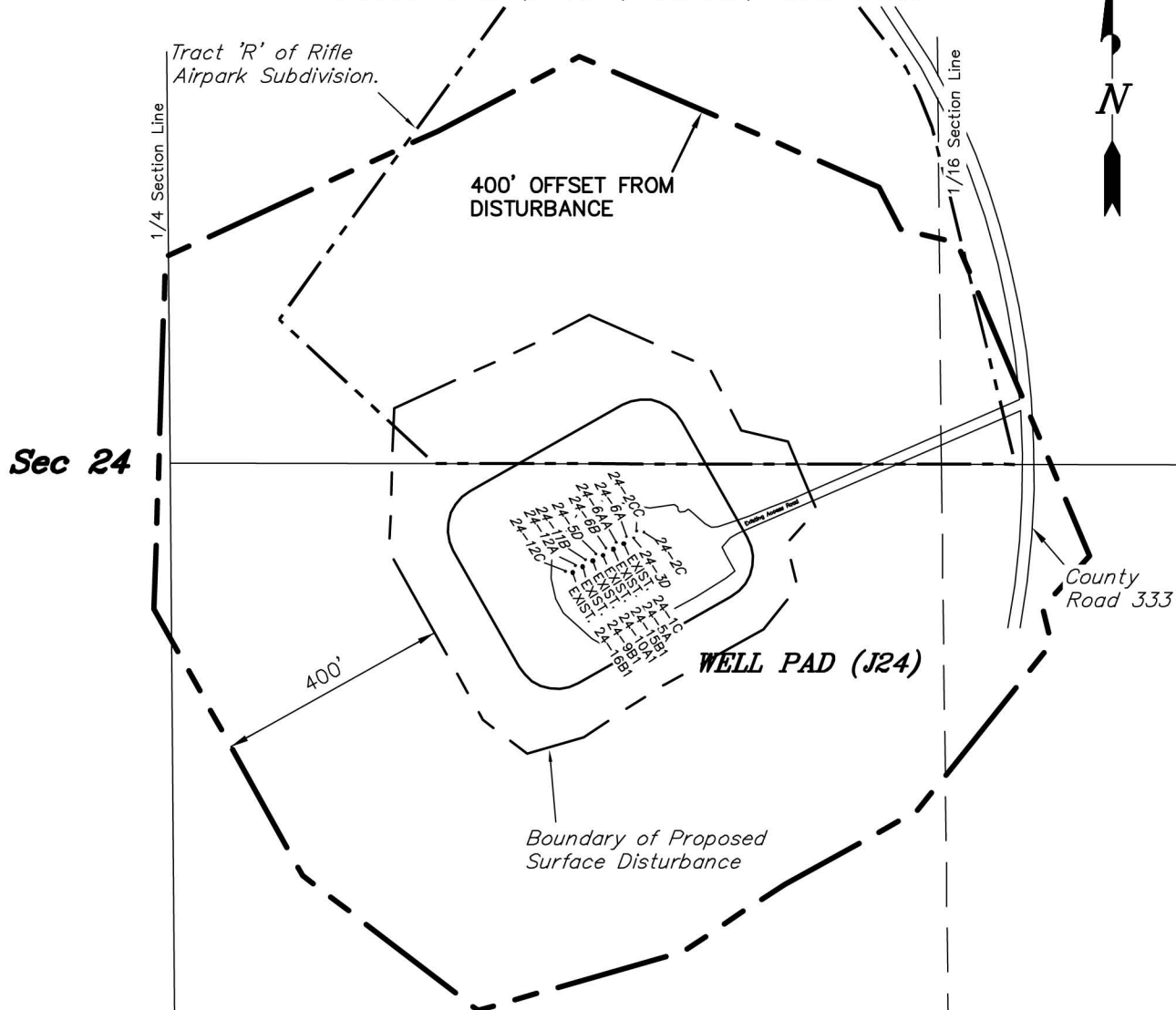


ENCANA OIL & GAS (USA) INC

SURFACE DISTURBANCE AREA WELL PAD (J24) EXPANSION Section 24, T6S, R93W, 6th P.M.



Distances from Well Heads

WELL	BUILDING	ABOVE GROUND UTILITY	PUBLIC ROAD	RAILROAD
24-2C	1,827'	708'	683'	2.16 MILES
24-2CC	1,837'	720'	695'	2.16 MILES
24-3D	1,847'	727'	703'	2.16 MILES
24-6A	1,857'	739'	714'	2.16 MILES
24-6AA	1,877'	757'	734'	2.16 MILES
24-6B	1,897'	776'	754'	2.16 MILES
24-5D	1,917'	795'	774'	2.16 MILES
24-11B	1,937'	814'	794'	2.16 MILES
24-12A	1,957'	833'	813'	2.16 MILES
24-12C	1,977'	851'	833'	2.16 MILES

SURVEYED BY: C.D.S. DATE SURVEYED: 12-08-11
 DRAWN BY: M.W. DATE DRAWN: 04-23-12
 SCALE: 1" = 300' REVISED: M.W. 06-26-12

Tri State
 Land Surveying, Inc.
 180 NORTH VERNAL AVE. VERNAL, UTAH 84078
 (435) 781-2501

SHEET
 2k
 OF 11