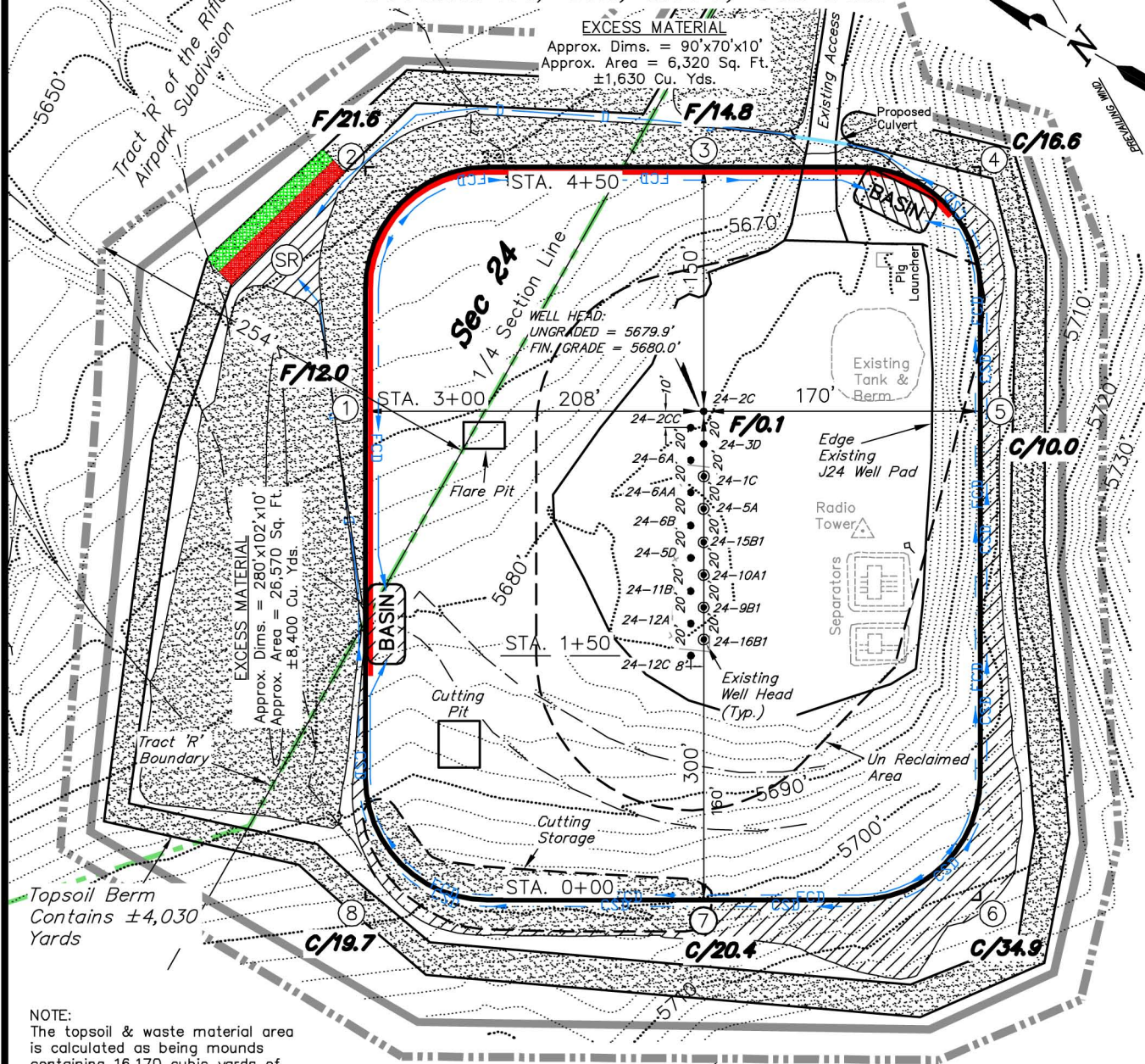


ENCANA OIL & GAS (USA) INC

PRELIMINARY LAYOUT DRAWING

WELL PAD (J24) EXPANSION

Section 24, T6S, R93W, 6th P.M.



NOTE:

The topsoil & waste material area is calculated as being mounds containing 16,170 cubic yards of dirt (a 15% fluff factor is included). The mound areas are calculated with push slopes of 2.5:1 & fall slopes of 2.5:1.

NOTES:

- (1) Slope Track and/or Terrace All Slopes and Piles
- (2) Erosion Control & Seed Topsoil Stockpile
- (3) Erosion Control & Seed Outside Slopes of Stockpiles
- (4) Slope away from Substructure Areas 1% to 3% to Flow Control Ditch on Entire Pad
- (5) When Possible the Cut and Fill Slopes Directly Behind the Proposed Production Equipment Should be Reclaimed with 3:1 Slopes and Topsoil Spread During Pad Construction.
- (6) BMP Selection and Position may Change Depending on Actual Conditions Encountered During the Construction Process.
- (7) All CMP's Shall have Inlet and Outlet Protection.
- (8) All BMP's to be constructed to Encana Oil & Gas (USA) Inc. BMP Manual's Specifications

LEGEND:

- PARI = PAD/ACCESS ROAD INTERFACE
 SR = SEDIMENT RESERVOIR
 ST = SEDIMENT TRAP
 R.O.P. = RUN-ON PROTECTION
 = PERIMETER CONTROL (WATTLES)
 CDM = CHECK DAM
 FCD = FLOW CONTROL DITCH
 ECB = EROSION CONTROL BLANKET
 D = FILL DIVERSION TO SEDIMENT TRAP
 CSD = CUT SLOPE DIVERSION (BERM TOE OF CUT SLOPE)
 VGB = VEGETATION BUFFER (UNDISTURBED LAND INSIDE PC)
 = SEED, ECB & FLEX
 = LEVEL SPREADER

SURVEYED BY: C.D.S./Q.M.	DATE SURVEYED: 12-08-11
DRAWN BY: R.V.C.	DATE DRAWN: 04-23-12
SCALE: 1" = 100'	REVISED: M.W. 06-26-12

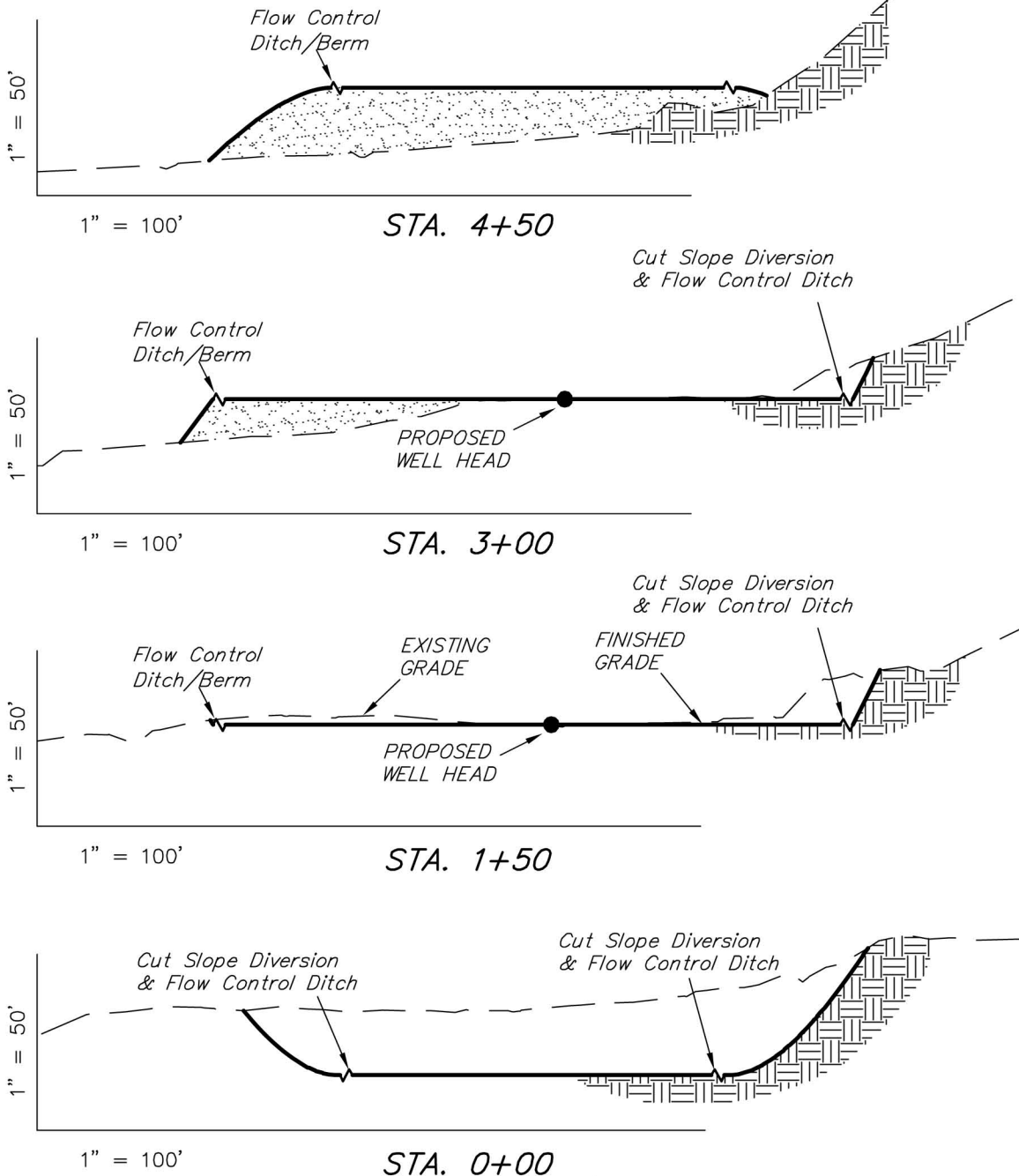
Tri State
 Land Surveying, Inc.
 180 NORTH VERNAL AVE. VERNAL, UTAH 84078
 (435) 781-2501

SHEET
 4
 OF 11

ENCANA OIL & GAS (USA) INC

CROSS SECTION

WELL PAD (J24) EXPANSION Section 24, T6S, R93W, 6th P.M.



NOTE:
UNLESS OTHERWISE
NOTED ALL CUT/FILL
SLOPES ARE AT 1.5:1

ESTIMATED EARTHWORK QUANTITIES (No Shrink or swell adjustments have been used) (Expressed in Cubic Yards)

ITEM	CUT	FILL	6" TOPSOIL	EXCESS
PAD	30,250	21,310	Topsoil is not included in Pad Cut	8,940
PIT	N/A	N/A		N/A
TOTALS	30,250	21,310	3,660	8,940

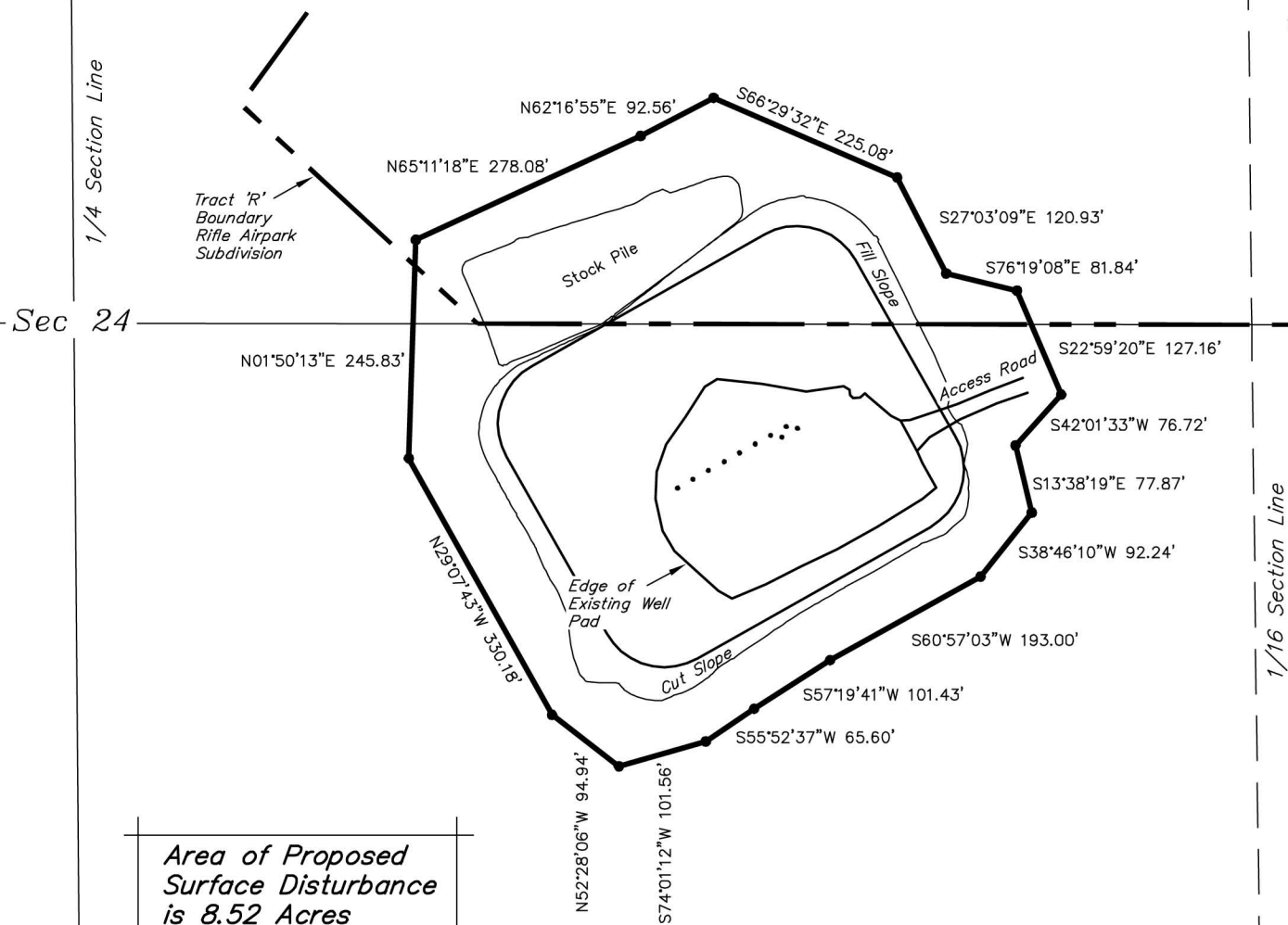
SURVEYED BY: C.D.S./Q.M. DATE SURVEYED: 12-08-11
DRAWN BY: M.W. DATE DRAWN: 03-19-12
SCALE: 1" = 100' REVISED: M.W. 06-26-12

Tri State
Land Surveying, Inc.
(435) 781-2501
180 NORTH VERNAL AVE. VERNAL, UTAH 84078

SHEET
5
OF 11

ENCANA OIL & GAS (USA) INC

SURFACE DISTURBANCE AREA WELL PAD (J24) EXPANSION Section 24, T8S, R93W, 6th P.M.



SURVEYED BY: C.D.S.	DATE SURVEYED: 12-08-11
DRAWN BY: M.W.	DATE DRAWN: 04-23-12
SCALE: 1" = 200'	REVISED: M.W. - 06-26-12

Tri State
Land Surveying, Inc.
180 NORTH VERNAL AVE. VERNAL, UTAH 84078
(435) 781-2501

SHEET
8
OF 11