

**EnCana** Oil & Gas Inc.

**Well Pad (J24) Expansion  
SEC. 24, T6S, R93W, 6th P.M.**



**Tri-State  
Land Surveying Inc.**  
(435) 781-2501  
180 North Vernal Ave. Vernal, Utah 84078

**SCALE: 1 = 100,000**  
**DRAWN BY: m.w.**  
**DATE: 06-26-2012**

**Legend**

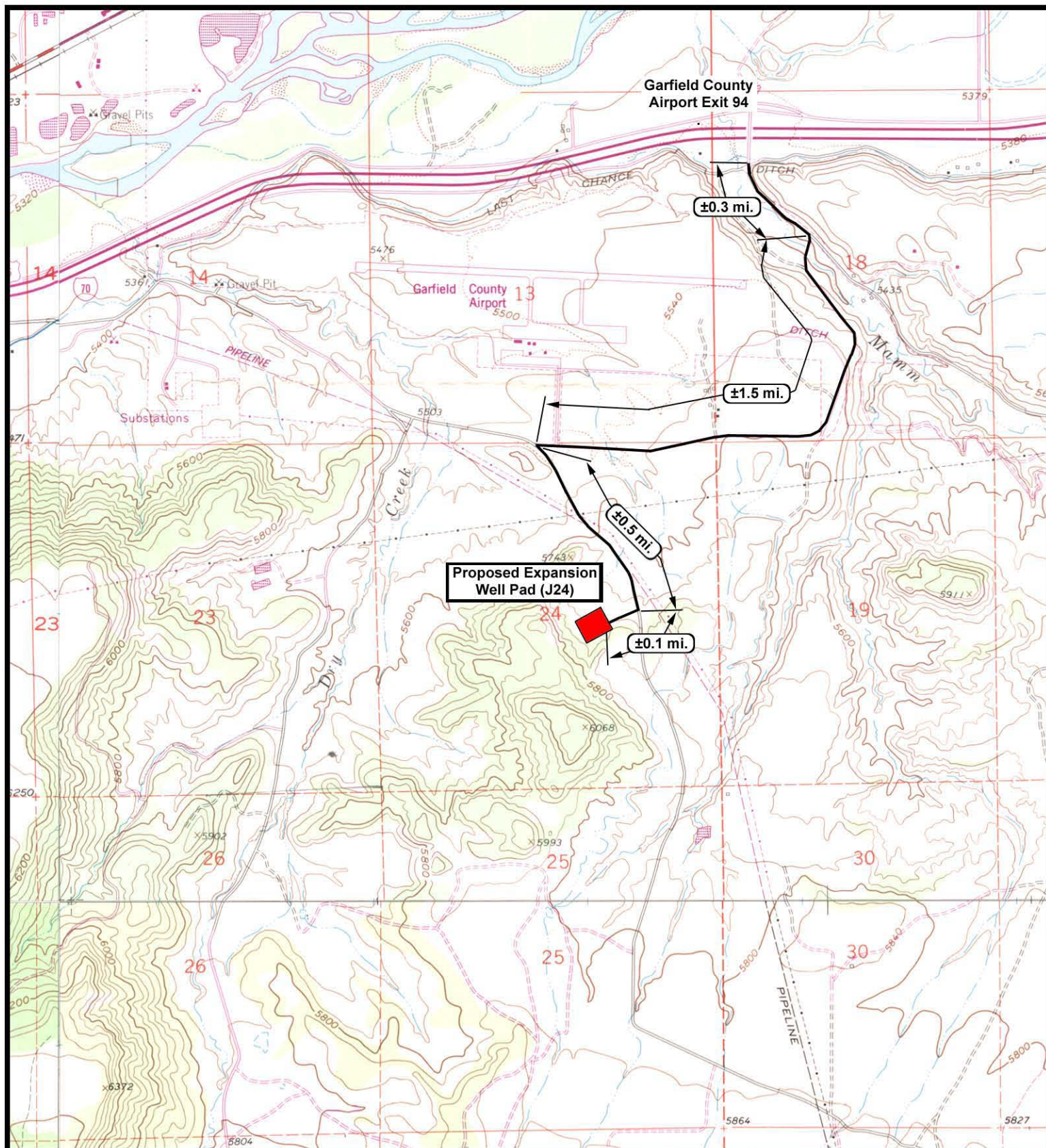
Existing Road

**TOPOGRAPHIC MAP**

**"A"**

**SHEET  
9  
OF 11**





**EnCana** Oil & Gas Inc.

**Well Pad (J24) Expansion  
SEC. 24, T6S, R93W, 6th P.M.**



**Tri-State  
Land Surveying Inc.**  
(435) 781-2501  
180 North Vernal Ave. Vernal, Utah 84078

SCALE: 1" = 2,000'  
DRAWN BY: m.w.  
DATE: 06-26-2012

**Legend**

Existing Road

TOPOGRAPHIC MAP

**"B"**

SHEET  
**10**  
OF 11