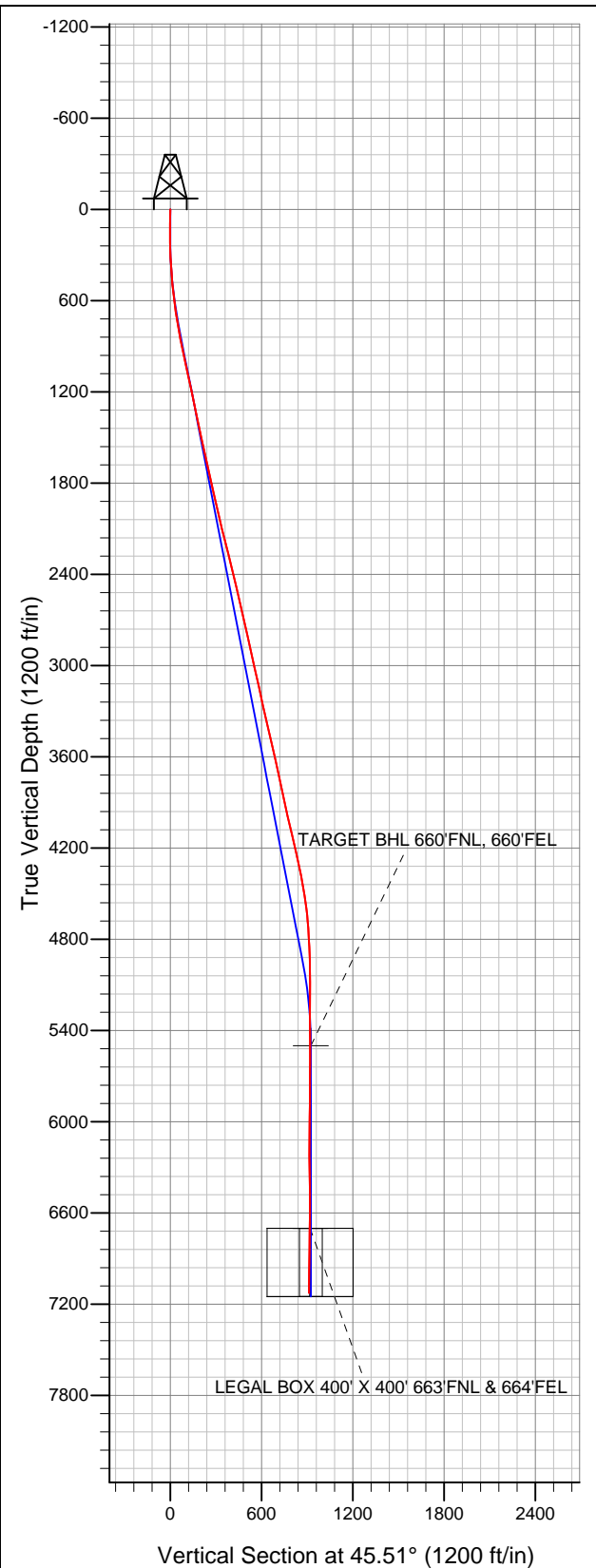


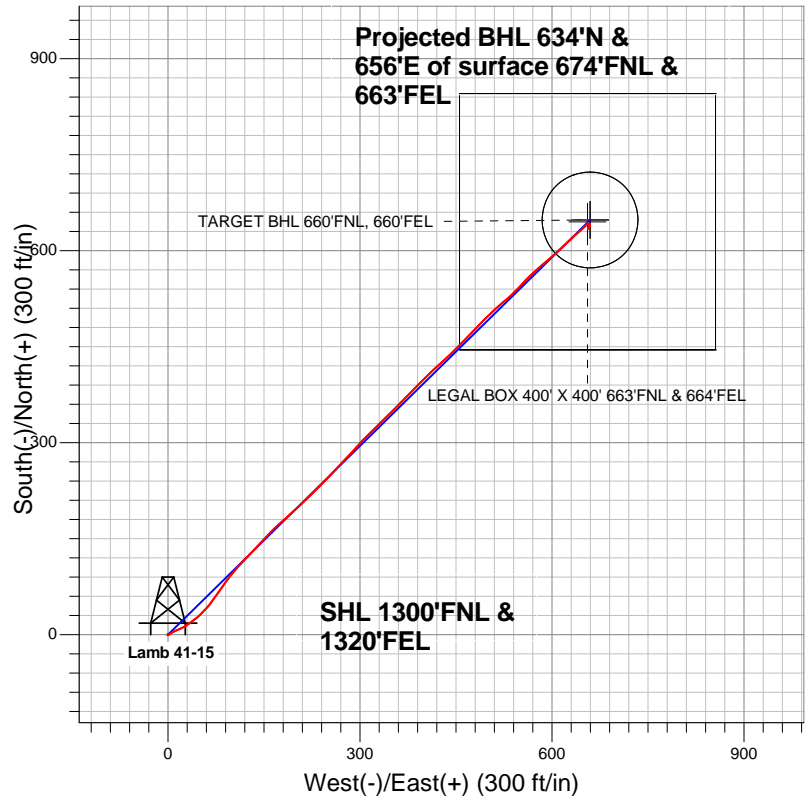
**Well Name: Lamb 41-15**

Surface Location: Lamb 5 Pad Sec.15-T4N-R68W  
North American Datum 1983 US State Plane 1983Colorado Northern Zone  
Ground Elevation: 4941.0

+N/-S	+E/-W	Northing	Easting	Latitude	Longitude	Slot
0.0	0.0	1358846.02	3143747.29	40.317286	-104.984497	
Original Well Elev		WELL @ 4954.0ft (Original Well Elev)				



**Sundance Energy, Weld County, CO**



**LEGEND**

- Wellbore #1
- Lamb 41-15, Wellbore #1, Plan #2 (8-31-12) R V0
- Survey #1

**Final Survey Plot**

Projected Final Survey -  
7223'MD & 7126'TVD @ 912'VS  
0.90 deg Inc 98.10 deg AZ

Project: SEC.15-T4N-R68W  
Site: Lamb 5 Pad Sec.15-T4N-R68W  
Well: Lamb 41-15  
Plan: Wellbore #1



# **Sundance Energy, Weld County, CO**

**SEC.15-T4N-R68W**

**Lamb 5 Pad Sec.15-T4N-R68W**

**Lamb 41-15**

**Wellbore #1**

**Survey: Survey #1**

## **Standard Survey Report**

**10 September, 2012**

<b>Company:</b>	Sundance Energy, Weld County, CO	<b>Local Co-ordinate Reference:</b>	Well Lamb 41-15
<b>Project:</b>	SEC.15-T4N-R68W	<b>TVD Reference:</b>	WELL @ 4954.0ft (Original Well Elev)
<b>Site:</b>	Lamb 5 Pad Sec.15-T4N-R68W	<b>MD Reference:</b>	WELL @ 4954.0ft (Original Well Elev)
<b>Well:</b>	Lamb 41-15	<b>North Reference:</b>	True
<b>Wellbore:</b>	Wellbore #1	<b>Survey Calculation Method:</b>	Minimum Curvature
<b>Design:</b>	Wellbore #1	<b>Database:</b>	Landmark

<b>Project</b>	SEC.15-T4N-R68W, Weld County, Colorado		
<b>Map System:</b>	US State Plane 1983	<b>System Datum:</b>	Mean Sea Level
<b>Geo Datum:</b>	North American Datum 1983		Using Well Reference Point
<b>Map Zone:</b>	Colorado Northern Zone		Using geodetic scale factor

Site		Lamb 5 Pad Sec.15-T4N-R68W			
Site Position:		Northing:	1,358,846.03ft	Latitude:	40.317286
From:	Lat/Long	Easting:	3,143,747.29ft	Longitude:	-104.984497
Position Uncertainty:	0.0 ft	Slot Radius:	"	Grid Convergence:	0.33 °

Well	Lamb 41-15					
Well Position	+N/-S	0.0 ft	Northing:	1,358,846.02 ft	Latitude:	40.317286
	+E/-W	0.0 ft	Easting:	3,143,747.29 ft	Longitude:	-104.984497
Position Uncertainty		0.0 ft	Wellhead Elevation:	ft	Ground Level:	4,941.0 ft

Wellbore	Wellbore #1				
Magnetics	Model Name	Sample Date	Declination (°)	Dip Angle (°)	Field Strength (nT)
	IGRF2010	8/31/2012	8.81	66.91	52,936

Design	Wellbore #1				
Audit Notes:					
Version:	1.0	Phase:	ACTUAL	Tie On Depth:	0.0
Vertical Section:	Depth From (TVD) (ft)	+N/-S (ft)	+E/-W (ft)	Direction (°)	
	0.0	0.0	0.0	45.51	

Survey Program		Date	9/10/2012		
From (ft)	To (ft)	Survey (Wellbore)	Tool Name	Description	
95.0	7,223.0	Survey #1 (Wellbore #1)	MWD	MWD - Standard	

Survey										
	Measured Depth (ft)	Inclination (°)	Azimuth (°)	Vertical Depth (ft)	+N/-S (ft)	+E/-W (ft)	Vertical Section (ft)	Dogleg Rate (°/100ft)	Build Rate (°/100ft)	Turn Rate (°/100ft)
Survey	0.0	0.00	0.00	0.0	0.0	0.0	0.0	0.00	0.00	0.00
	95.0	1.00	218.20	95.0	-0.7	-0.5	-0.8	1.05	1.05	0.00
	158.0	0.40	109.40	158.0	-1.2	-0.6	-1.3	1.89	-0.95	-172.70
	279.0	2.00	56.60	279.0	-0.1	1.5	1.0	1.48	1.32	-43.64
	401.0	3.60	58.60	400.8	3.0	6.6	6.8	1.31	1.31	1.64
	510.0	6.70	67.20	509.4	7.3	15.3	16.1	2.92	2.84	7.89
	556.0	6.70	67.20	555.0	9.4	20.3	21.0	0.00	0.00	0.00
	580.0	6.90	60.30	578.9	10.6	22.8	23.7	3.50	0.83	-28.75
	705.0	9.10	53.60	702.7	20.2	37.3	40.8	1.91	1.76	-5.36
	830.0	10.80	45.70	825.8	34.3	53.7	62.3	1.74	1.36	-6.32
	954.0	12.10	35.70	947.3	52.9	69.6	86.7	1.91	1.05	-8.06
	1,079.0	12.20	35.20	1,069.5	74.4	84.8	112.6	0.12	0.08	-0.40
	1,204.0	12.30	38.50	1,191.7	95.6	100.7	138.8	0.57	0.08	2.64

<b>Company:</b>	Sundance Energy, Weld County, CO	<b>Local Co-ordinate Reference:</b>	Well Lamb 41-15
<b>Project:</b>	SEC.15-T4N-R68W	<b>TVD Reference:</b>	WELL @ 4954.0ft (Original Well Elev)
<b>Site:</b>	Lamb 5 Pad Sec.15-T4N-R68W	<b>MD Reference:</b>	WELL @ 4954.0ft (Original Well Elev)
<b>Well:</b>	Lamb 41-15	<b>North Reference:</b>	True
<b>Wellbore:</b>	Wellbore #1	<b>Survey Calculation Method:</b>	Minimum Curvature
<b>Design:</b>	Wellbore #1	<b>Database:</b>	Landmark

Survey										
Measured Depth (ft)	Inclination (°)	Azimuth (°)	Vertical Depth (ft)	+N/-S (ft)	+E/-W (ft)	Vertical Section (ft)	Dogleg Rate (°/100ft)	Build Rate (°/100ft)	Turn Rate (°/100ft)	
1,329.0	11.40	44.30	1,314.0	114.8	117.6	164.4	1.19	-0.72	4.64	
1,453.0	12.60	43.80	1,435.3	133.4	135.6	190.2	0.97	0.97	-0.40	
1,578.0	12.20	42.20	1,557.4	153.0	153.9	217.0	0.42	-0.32	-1.28	
1,703.0	12.40	48.40	1,679.5	171.7	172.8	243.6	1.07	0.16	4.96	
1,828.0	12.80	48.50	1,801.5	189.8	193.2	270.8	0.32	0.32	0.08	
1,952.0	13.40	44.50	1,922.3	209.1	213.5	298.9	0.88	0.48	-3.23	
2,077.0	12.70	47.30	2,044.1	228.8	233.8	327.1	0.75	-0.56	2.24	
2,202.0	14.20	42.70	2,165.6	249.4	254.3	356.1	1.47	1.20	-3.68	
2,327.0	14.50	43.10	2,286.7	272.1	275.4	387.1	0.25	0.24	0.32	
2,451.0	13.20	41.70	2,407.1	294.0	295.4	416.7	1.08	-1.05	-1.13	
2,576.0	13.10	46.60	2,528.9	314.3	315.2	445.1	0.90	-0.08	3.92	
2,701.0	12.60	44.10	2,650.7	333.9	335.0	472.9	0.60	-0.40	-2.00	
2,826.0	12.80	45.90	2,772.7	353.3	354.4	500.4	0.35	0.16	1.44	
2,950.0	12.70	44.80	2,893.6	372.5	373.9	527.8	0.21	-0.08	-0.89	
3,075.0	12.60	43.10	3,015.6	392.2	392.9	555.1	0.31	-0.08	-1.36	
3,200.0	12.70	48.00	3,137.5	411.4	412.4	582.5	0.86	0.08	3.92	
3,325.0	12.00	47.50	3,259.6	429.4	432.2	609.2	0.57	-0.56	-0.40	
3,450.0	13.50	45.00	3,381.6	448.5	452.1	636.8	1.28	1.20	-2.00	
3,574.0	12.80	42.40	3,502.3	468.8	471.6	665.0	0.74	-0.56	-2.10	
3,699.0	13.00	46.30	3,624.2	488.8	491.1	692.9	0.71	0.16	3.12	
3,824.0	11.60	45.90	3,746.3	507.2	510.3	719.5	1.12	-1.12	-0.32	
3,949.0	11.90	51.00	3,868.7	524.1	529.3	744.9	0.86	0.24	4.08	
4,073.0	13.50	41.50	3,989.6	543.0	548.8	772.0	2.12	1.29	-7.66	
4,198.0	12.70	47.30	4,111.4	563.2	568.6	800.3	1.23	-0.64	4.64	
4,323.0	13.00	49.80	4,233.3	581.6	589.5	828.1	0.51	0.24	2.00	
4,448.0	11.40	48.00	4,355.4	599.0	609.4	854.5	1.32	-1.28	-1.44	
4,572.0	9.80	46.10	4,477.3	614.5	626.1	877.2	1.32	-1.29	-1.53	
4,697.0	6.80	48.00	4,601.0	626.8	639.3	895.3	2.41	-2.40	1.52	
4,822.0	4.10	48.70	4,725.4	634.7	648.1	907.1	2.16	-2.16	0.56	
4,947.0	2.30	44.30	4,850.2	639.5	653.2	914.1	1.45	-1.44	-3.52	
5,071.0	1.20	49.20	4,974.2	642.1	655.9	917.9	0.89	-0.89	3.95	
5,196.0	0.10	118.30	5,099.2	642.9	657.0	919.2	0.93	-0.88	55.28	
5,321.0	1.00	207.10	5,224.1	641.9	656.6	918.2	0.80	0.72	71.04	
5,446.0	1.10	54.20	5,349.1	641.6	657.1	918.4	1.63	0.08	-122.32	
5,570.0	0.40	105.50	5,473.1	642.2	658.5	919.8	0.73	-0.56	41.37	
5,596.8	0.39	131.25	5,500.0	642.1	658.6	919.8	0.66	-0.05	95.99	
TARGET BHL 660'FNL, 660'FEL										
5,695.0	0.80	183.90	5,598.1	641.2	658.8	919.3	0.66	0.42	53.63	
5,820.0	0.30	167.40	5,723.1	640.0	658.9	918.5	0.42	-0.40	-13.20	
5,945.0	0.50	180.40	5,848.1	639.1	658.9	918.0	0.17	0.16	10.40	
6,069.0	0.60	213.60	5,972.1	638.1	658.6	916.9	0.26	0.08	26.77	
6,194.0	0.90	220.10	6,097.1	636.8	657.6	915.3	0.25	0.24	5.20	
6,319.0	0.50	27.60	6,222.1	636.5	657.2	914.9	1.11	-0.32	134.00	
6,444.0	1.10	30.40	6,347.1	638.0	658.1	916.5	0.48	0.48	2.24	
6,569.0	0.20	90.20	6,472.1	639.0	658.9	917.9	0.81	-0.72	47.84	
6,693.0	0.30	200.20	6,596.1	638.7	659.0	917.7	0.33	0.08	88.71	
6,797.9	0.55	220.03	6,701.0	638.1	658.6	917.0	0.27	0.24	18.91	
TARGET CIRCLE 660'FNL & 660'FEL - LEGAL BOX 400' X 400' 663'FNL & 664'FEL										
6,818.0	0.60	221.90	6,721.1	637.9	658.4	916.8	0.27	0.26	9.29	
6,943.0	0.80	211.10	6,846.1	636.7	657.5	915.3	0.19	0.16	-8.64	
7,068.0	0.90	211.80	6,971.0	635.1	656.6	913.5	0.08	0.08	0.56	
7,177.0	0.90	198.10	7,080.0	633.6	655.9	911.9	0.20	0.00	-12.57	
7,223.0	0.90	98.10	7,126.0	633.2	656.1	911.8	3.00	0.00	-217.39	

<b>Company:</b>	Sundance Energy, Weld County, CO	<b>Local Co-ordinate Reference:</b>	Well Lamb 41-15
<b>Project:</b>	SEC.15-T4N-R68W	<b>TVD Reference:</b>	WELL @ 4954.0ft (Original Well Elev)
<b>Site:</b>	Lamb 5 Pad Sec.15-T4N-R68W	<b>MD Reference:</b>	WELL @ 4954.0ft (Original Well Elev)
<b>Well:</b>	Lamb 41-15	<b>North Reference:</b>	True
<b>Wellbore:</b>	Wellbore #1	<b>Survey Calculation Method:</b>	Minimum Curvature
<b>Design:</b>	Wellbore #1	<b>Database:</b>	Landmark

Checked By: _____	Approved By: _____	Date: _____
-------------------	--------------------	-------------