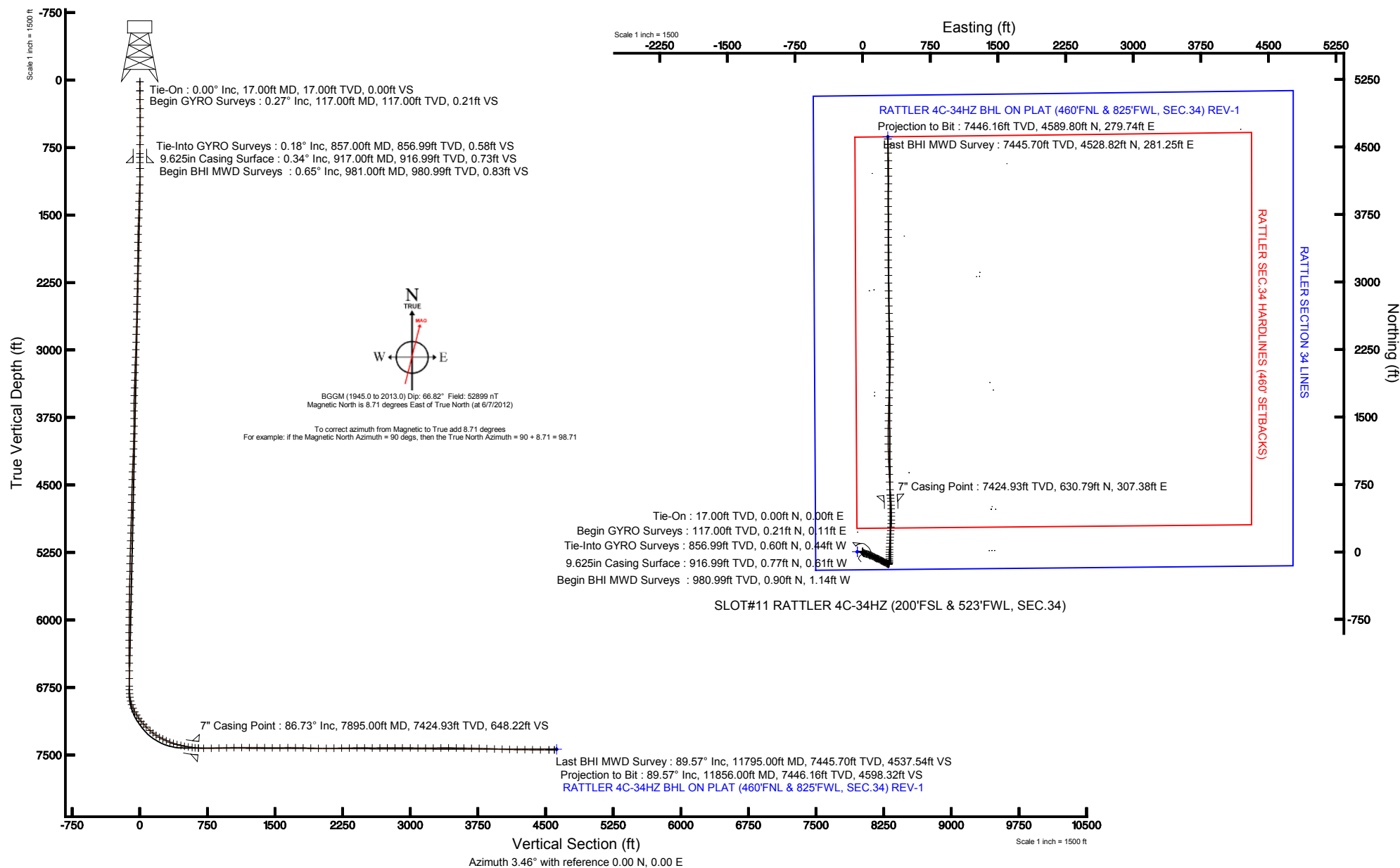


Location:	COLORADO	Slot:	SLOT#11 RATTLER 4C-34HZ (200'FSL & 523'FWL, SEC.34)
Field:	WELD COUNTY (KERR MCGEE)	Well:	RATTLER 4C-34HZ
Facility:	SEC 34-T3N-R66W	Wellbore:	RATTLER 4C-34HZ PWB

True vertical depths are referenced to XTREME 6 (RKB)	Grid System: NAD83 / Lambert Colorado SP, Northern Zone (501), US feet
Measured depths are referenced to XTREME 6 (RKB)	North Reference: True north
XTREME 6 (RKB) to Mean Sea Level: 4984 feet	Scale: True distance
Mean Sea Level to Mud line (At Slot: SLOT#11 RATTLER 4C-34HZ (200'FSL & 523'FWL, SEC.34)): 0 feet	Depths are in feet
Coordinates are in feet referenced to Slot	Created by: wisief02 on 6/21/2012





Actual Wellpath Report

RATTLER 4C-34HZ AWP

Page 1 of 7



REFERENCE WELLPATH IDENTIFICATION

Operator	KERR-MCGEE OIL & GAS ONSHORE LP	Slot	SLOT#11 RATTLER 4C-34HZ (200'FSL & 523'FWL, SEC.34)
Area	COLORADO	Well	RATTLER 4C-34HZ
Field	WELD COUNTY (KERR MCGEE)	Wellbore	RATTLER 4C-34HZ AWB
Facility	SEC.34-T3N-R66W		

REPORT SETUP INFORMATION

Projection System	NAD83 / Lambert Colorado SP, Northern Zone (501), US feet	Software System	WellArchitect® 3.0.2
North Reference	True	User	Wilsjef02
Scale	0.999958	Report Generated	6/21/2012 at 13:52:44
Convergence at slot	0.47° East	Database/Source file	WellArchitectDB/RATTLER_4C-34HZ_AWB.xml

WELLPATH LOCATION

	Local coordinates		Grid coordinates		Geographic coordinates	
	North[ft]	East[ft]	Easting[US ft]	Northing[US ft]	Latitude	Longitude
Slot Location	-1736.59	-128.86	3203744.75	1307390.46	40°10'29.579"N	104°46'15.100"W
Facility Reference Pt			3203859.31	1309127.97	40°10'46.740"N	104°46'13.440"W
Field Reference Pt			3197771.84	1268891.29	40°04'09.600"N	104°47'36.000"W

WELLPATH DATUM

Calculation method	Minimum curvature	XTREME 6 (RKB) to Facility Vertical Datum	4984.00ft
Horizontal Reference Pt	Slot	XTREME 6 (RKB) to Mean Sea Level	4984.00ft
Vertical Reference Pt	XTREME 6 (RKB)	XTREME 6 (RKB) to Mud Line at Slot (SLOT#11 RATTLER 4C-34HZ (200'FSL & 523'FWL, SEC.34))	4984.00ft
MD Reference Pt	XTREME 6 (RKB)	Section Origin	N 0.00, E 0.00 ft
Field Vertical Reference	Mean Sea Level	Section Azimuth	3.49°



Actual Wellpath Report

RATTLER 4C-34HZ AWP

Page 2 of 7



REFERENCE WELLPATH IDENTIFICATION

Operator	KERR-MCGEE OIL & GAS ONSHORE LP	Slot	SLOT#11 RATTLER 4C-34HZ (200'FSL & 523'FWL, SEC.34)
Area	COLORADO	Well	RATTLER 4C-34HZ
Field	WELD COUNTY (KERR MCGEE)	Wellbore	RATTLER 4C-34HZ AWB
Facility	SEC.34-T3N-R66W		

WELLPATH DATA (153 stations) † = interpolated/extrapolated station

MD [ft]	Inclination [°]	Azimuth [°]	TVD [ft]	Vert Sect [ft]	North [ft]	East [ft]	Latitude	Longitude	DLS [°/100ft]	Comments
0.00†	0.000	27.900	0.00	0.00	0.00	0.00	40°10'29.579"N	104°46'15.100"W	0.00	
17.00	0.000	27.900	17.00	0.00	0.00	0.00	40°10'29.579"N	104°46'15.100"W	0.00	Tie-On
117.00	0.270	27.900	117.00	0.21	0.21	0.11	40°10'29.581"N	104°46'15.099"W	0.27	Begin GYRO Surveys
217.00	0.390	10.500	217.00	0.77	0.75	0.28	40°10'29.586"N	104°46'15.096"W	0.16	
317.00	0.240	27.470	317.00	1.30	1.27	0.44	40°10'29.592"N	104°46'15.094"W	0.18	
417.00	0.110	67.080	417.00	1.53	1.49	0.63	40°10'29.594"N	104°46'15.092"W	0.17	
517.00	0.220	324.490	517.00	1.72	1.69	0.60	40°10'29.596"N	104°46'15.092"W	0.27	
617.00	0.390	212.920	616.99	1.57	1.56	0.31	40°10'29.594"N	104°46'15.096"W	0.51	
717.00	0.310	210.810	716.99	1.04	1.04	-0.02	40°10'29.589"N	104°46'15.100"W	0.08	
817.00	0.320	227.030	816.99	0.60	0.62	-0.36	40°10'29.585"N	104°46'15.105"W	0.09	
857.00	0.180	358.510	856.99	0.58	0.60	-0.44	40°10'29.585"N	104°46'15.106"W	1.15	Tie-Into GYRO Surveys
981.00	0.650	277.980	980.99	0.83	0.90	-1.14	40°10'29.588"N	104°46'15.115"W	0.52	Begin BHI MWD Surveys
1073.00	1.140	175.910	1072.98	-0.04	0.06	-1.60	40°10'29.580"N	104°46'15.121"W	1.55	
1165.00	2.350	170.230	1164.94	-2.78	-2.71	-1.21	40°10'29.552"N	104°46'15.116"W	1.33	
1257.00	2.740	138.330	1256.85	-6.17	-6.22	0.57	40°10'29.518"N	104°46'15.093"W	1.57	
1348.00	3.130	122.600	1347.73	-8.91	-9.18	4.11	40°10'29.488"N	104°46'15.047"W	0.98	
1440.00	4.500	113.320	1439.53	-11.36	-11.96	9.54	40°10'29.461"N	104°46'14.977"W	1.63	
1532.00	4.640	118.260	1531.23	-14.14	-15.15	16.13	40°10'29.429"N	104°46'14.892"W	0.45	
1623.00	4.640	120.050	1621.94	-17.33	-18.74	22.56	40°10'29.394"N	104°46'14.809"W	0.16	
1715.00	4.420	107.650	1713.65	-19.86	-21.68	29.16	40°10'29.365"N	104°46'14.724"W	1.09	
1805.00	4.080	103.320	1803.40	-21.26	-23.47	35.58	40°10'29.347"N	104°46'14.642"W	0.52	
1896.00	3.900	102.870	1894.18	-22.32	-24.90	41.75	40°10'29.333"N	104°46'14.562"W	0.20	
1982.00	3.790	100.300	1979.99	-23.13	-26.06	47.40	40°10'29.321"N	104°46'14.489"W	0.24	
2067.00	4.520	103.350	2064.77	-24.04	-27.34	53.42	40°10'29.309"N	104°46'14.412"W	0.90	
2152.00	4.370	106.650	2149.51	-25.35	-29.04	59.78	40°10'29.292"N	104°46'14.330"W	0.35	
2237.00	3.950	104.500	2234.29	-26.64	-30.70	65.72	40°10'29.276"N	104°46'14.253"W	0.53	
2323.00	4.150	116.670	2320.07	-28.43	-32.84	71.37	40°10'29.255"N	104°46'14.181"W	1.02	
2408.00	3.790	115.750	2404.87	-30.71	-35.44	76.64	40°10'29.229"N	104°46'14.113"W	0.43	
2493.00	3.260	111.640	2489.71	-32.53	-37.55	81.42	40°10'29.208"N	104°46'14.051"W	0.69	
2579.00	3.960	107.800	2575.54	-34.02	-39.36	86.52	40°10'29.190"N	104°46'13.985"W	0.86	
2662.00	5.030	111.310	2658.28	-35.84	-41.56	92.64	40°10'29.168"N	104°46'13.907"W	1.33	
2747.00	4.790	116.780	2742.97	-38.39	-44.51	99.28	40°10'29.139"N	104°46'13.821"W	0.62	
2831.00	4.190	116.970	2826.71	-41.00	-47.48	105.15	40°10'29.110"N	104°46'13.745"W	0.71	
2917.00	4.420	112.070	2912.47	-43.31	-50.15	111.02	40°10'29.083"N	104°46'13.670"W	0.50	
3002.00	4.080	115.470	2997.23	-45.48	-52.68	116.78	40°10'29.058"N	104°46'13.596"W	0.50	
3087.00	4.750	120.430	3081.98	-48.21	-55.77	122.55	40°10'29.028"N	104°46'13.521"W	0.91	
3172.00	4.610	121.910	3166.70	-51.43	-59.35	128.48	40°10'28.992"N	104°46'13.445"W	0.22	
3257.00	3.850	124.200	3251.47	-54.51	-62.76	133.74	40°10'28.959"N	104°46'13.377"W	0.92	
3342.00	4.140	122.450	3336.26	-57.46	-66.01	138.69	40°10'28.927"N	104°46'13.313"W	0.37	
3427.00	4.150	119.820	3421.04	-60.31	-69.19	143.95	40°10'28.895"N	104°46'13.246"W	0.22	
3512.00	3.280	119.960	3505.86	-62.75	-71.93	148.72	40°10'28.868"N	104°46'13.184"W	1.02	
3598.00	3.020	117.080	3591.73	-64.76	-74.19	152.87	40°10'28.846"N	104°46'13.131"W	0.35	
3683.00	3.090	91.270	3676.61	-65.56	-75.26	157.16	40°10'28.835"N	104°46'13.075"W	1.61	
3768.00	2.550	85.880	3761.51	-65.23	-75.18	161.33	40°10'28.836"N	104°46'13.022"W	0.71	
3853.00	3.290	102.020	3846.40	-65.34	-75.55	165.60	40°10'28.832"N	104°46'12.967"W	1.29	



Actual Wellpath Report

RATTLER 4C-34HZ AWP

Page 3 of 7



REFERENCE WELLPATH IDENTIFICATION

Operator	KERR-MCGEE OIL & GAS ONSHORE LP	Slot	SLOT#11 RATTLER 4C-34HZ (200'FSL & 523'FWL, SEC.34)
Area	COLORADO	Well	RATTLER 4C-34HZ
Field	WELD COUNTY (KERR MCGEE)	Wellbore	RATTLER 4C-34HZ AWB
Facility	SEC.34-T3N-R66W		

WELLPATH DATA (153 stations)

MD [ft]	Inclination [°]	Azimuth [°]	TVD [ft]	Vert Sect [ft]	North [ft]	East [ft]	Latitude	Longitude	DLS [°/100ft]	Comments
3938.00	4.030	112.980	3931.23	-66.70	-77.23	170.74	40°10'28.816"N	104°46'12.900"W	1.19	
4022.00	4.060	117.550	4015.02	-68.89	-79.75	176.09	40°10'28.791"N	104°46'12.831"W	0.39	
4107.00	4.270	120.900	4099.79	-71.58	-82.77	181.48	40°10'28.761"N	104°46'12.762"W	0.38	
4192.00	4.560	123.770	4184.54	-74.74	-86.27	187.00	40°10'28.726"N	104°46'12.691"W	0.43	
4277.00	4.760	122.330	4269.26	-78.14	-90.04	192.79	40°10'28.689"N	104°46'12.616"W	0.27	
4363.00	4.540	123.800	4354.98	-81.58	-93.84	198.63	40°10'28.652"N	104°46'12.541"W	0.29	
4448.00	3.790	118.030	4439.75	-84.45	-97.03	203.91	40°10'28.620"N	104°46'12.473"W	1.01	
4533.00	3.760	118.160	4524.57	-86.78	-99.67	208.85	40°10'28.594"N	104°46'12.410"W	0.04	
4618.00	3.490	118.590	4609.40	-89.04	-102.22	213.57	40°10'28.569"N	104°46'12.349"W	0.32	
4703.00	3.250	119.530	4694.25	-91.19	-104.65	217.94	40°10'28.545"N	104°46'12.292"W	0.29	
4789.00	3.390	111.790	4780.11	-93.06	-106.79	222.42	40°10'28.524"N	104°46'12.235"W	0.55	
4874.00	4.270	116.950	4864.92	-95.11	-109.16	227.58	40°10'28.500"N	104°46'12.168"W	1.11	
4959.00	4.090	121.640	4949.69	-97.80	-112.18	232.98	40°10'28.470"N	104°46'12.099"W	0.45	
5044.00	4.270	113.620	5034.46	-100.32	-115.04	238.46	40°10'28.442"N	104°46'12.028"W	0.72	
5130.00	4.500	113.760	5120.21	-102.59	-117.68	244.48	40°10'28.416"N	104°46'11.950"W	0.27	
5215.00	4.610	116.050	5204.94	-105.06	-120.53	250.60	40°10'28.388"N	104°46'11.872"W	0.25	
5301.00	4.620	109.700	5290.67	-107.35	-123.21	256.97	40°10'28.361"N	104°46'11.790"W	0.59	
5386.00	3.360	108.000	5375.46	-108.93	-125.14	262.56	40°10'28.342"N	104°46'11.718"W	1.49	
5471.00	2.280	127.020	5460.36	-110.49	-126.92	266.28	40°10'28.325"N	104°46'11.670"W	1.66	
5557.00	1.410	149.160	5546.31	-112.31	-128.86	268.19	40°10'28.306"N	104°46'11.645"W	1.29	
5642.00	1.250	150.230	5631.29	-113.95	-130.56	269.18	40°10'28.289"N	104°46'11.632"W	0.19	
5727.00	1.300	136.870	5716.27	-115.38	-132.07	270.30	40°10'28.274"N	104°46'11.618"W	0.35	
5812.00	1.790	109.730	5801.24	-116.42	-133.22	272.21	40°10'28.262"N	104°46'11.593"W	1.02	
5897.00	2.040	106.370	5886.19	-117.13	-134.10	274.91	40°10'28.254"N	104°46'11.558"W	0.32	
5982.00	1.690	112.660	5971.15	-117.88	-135.01	277.52	40°10'28.245"N	104°46'11.525"W	0.48	
6067.00	1.570	112.470	6056.11	-118.67	-135.94	279.75	40°10'28.236"N	104°46'11.496"W	0.14	
6152.00	1.520	118.960	6141.08	-119.53	-136.93	281.82	40°10'28.226"N	104°46'11.469"W	0.21	
6238.00	0.750	95.190	6227.06	-120.04	-137.53	283.38	40°10'28.220"N	104°46'11.449"W	1.03	
6323.00	0.730	71.840	6312.06	-119.85	-137.41	284.44	40°10'28.221"N	104°46'11.436"W	0.35	
6408.00	0.820	77.240	6397.05	-119.48	-137.11	285.55	40°10'28.224"N	104°46'11.421"W	0.14	
6493.00	1.040	69.050	6482.04	-118.99	-136.70	286.87	40°10'28.228"N	104°46'11.404"W	0.30	
6578.00	1.050	72.550	6567.02	-118.40	-136.19	288.33	40°10'28.233"N	104°46'11.386"W	0.08	
6664.00	0.940	71.330	6653.01	-117.85	-135.73	289.75	40°10'28.238"N	104°46'11.367"W	0.13	
6749.00	1.050	69.030	6738.00	-117.26	-135.23	291.14	40°10'28.243"N	104°46'11.349"W	0.14	
6787.00	0.990	59.080	6775.99	-116.93	-134.93	291.74	40°10'28.246"N	104°46'11.342"W	0.49	
6830.00	3.860	13.300	6818.95	-115.30	-133.33	292.40	40°10'28.261"N	104°46'11.333"W	7.55	
6872.00	8.130	8.820	6860.71	-110.95	-129.02	293.18	40°10'28.304"N	104°46'11.323"W	10.22	
6915.00	13.510	7.180	6902.93	-102.90	-121.03	294.27	40°10'28.383"N	104°46'11.309"W	12.53	
6957.00	18.800	3.990	6943.26	-91.23	-109.40	295.36	40°10'28.498"N	104°46'11.295"W	12.77	
7000.00	23.920	1.520	6983.29	-75.58	-93.76	296.07	40°10'28.652"N	104°46'11.286"W	12.09	
7043.00	29.330	1.020	7021.72	-56.33	-74.50	296.49	40°10'28.843"N	104°46'11.280"W	12.59	
7085.00	31.480	0.560	7057.94	-35.10	-53.25	296.78	40°10'29.053"N	104°46'11.277"W	5.15	
7128.00	34.410	0.200	7094.02	-11.75	-29.87	296.93	40°10'29.284"N	104°46'11.275"W	6.83	
7170.00	38.510	0.070	7127.79	13.16	-4.91	296.99	40°10'29.530"N	104°46'11.274"W	9.76	
7213.00	42.280	1.740	7160.54	40.99	22.94	297.44	40°10'29.806"N	104°46'11.268"W	9.12	



Actual Wellpath Report

RATTLER 4C-34HZ AWP

Page 4 of 7



REFERENCE WELLPATH IDENTIFICATION

Operator	KERR-MCGEE OIL & GAS ONSHORE LP	Slot	SLOT#11 RATTLER 4C-34HZ (200'FSL & 523'FWL, SEC.34)
Area	COLORADO	Well	RATTLER 4C-34HZ
Field	WELD COUNTY (KERR MCGEE)	Wellbore	RATTLER 4C-34HZ AWB
Facility	SEC.34-T3N-R66W		

WELLPATH DATA (153 stations) † = interpolated/extrapolated station

MD [ft]	Inclination [°]	Azimuth [°]	TVD [ft]	Vert Sect [ft]	North [ft]	East [ft]	Latitude	Longitude	DLS [°/100ft]	Comments
7256.00	45.670	3.200	7191.48	70.84	52.76	298.74	40°10'30.100"N	104°46'11.251"W	8.23	
7313.00	47.900	2.560	7230.51	112.38	94.25	300.83	40°10'30.510"N	104°46'11.225"W	4.00	
7355.00	51.420	3.080	7257.69	144.38	126.22	302.40	40°10'30.826"N	104°46'11.204"W	8.43	
7398.00	57.240	4.310	7282.75	179.30	161.06	304.67	40°10'31.171"N	104°46'11.175"W	13.73	
7441.00	61.370	4.390	7304.70	216.26	197.92	307.47	40°10'31.535"N	104°46'11.139"W	9.61	
7483.00	63.700	4.890	7324.07	253.52	235.06	310.49	40°10'31.902"N	104°46'11.100"W	5.65	
7526.00	65.200	5.940	7342.62	292.29	273.68	314.15	40°10'32.284"N	104°46'11.053"W	4.13	
7569.00	67.950	3.360	7359.71	331.73	313.00	317.34	40°10'32.672"N	104°46'11.012"W	8.44	
7611.00	72.320	0.990	7373.98	371.20	352.46	318.83	40°10'33.062"N	104°46'10.993"W	11.68	
7654.00	75.270	358.610	7385.98	412.40	393.74	318.68	40°10'33.470"N	104°46'10.995"W	8.68	
7697.00	77.350	358.320	7396.16	454.02	435.51	317.56	40°10'33.883"N	104°46'11.009"W	4.88	
7739.00	78.310	358.190	7405.01	494.90	476.54	316.31	40°10'34.288"N	104°46'11.025"W	2.31	
7782.00	80.740	358.960	7412.83	537.03	518.81	315.26	40°10'34.706"N	104°46'11.039"W	5.92	
7825.00	82.900	355.970	7418.95	579.35	561.32	313.37	40°10'35.126"N	104°46'11.063"W	8.52	
7859.00	85.320	354.650	7422.44	612.82	595.03	310.61	40°10'35.459"N	104°46'11.099"W	8.10	
7895.00†	86.730	355.037	7424.93	648.32	630.79	307.38	40°10'35.812"N	104°46'11.140"W	4.06	7" Casing Point
7954.00	89.040	355.670	7427.11	706.69	689.56	302.60	40°10'36.393"N	104°46'11.202"W	4.06	
8039.00	90.960	358.860	7427.11	791.17	774.44	298.55	40°10'37.232"N	104°46'11.254"W	4.38	
8124.00	91.900	356.730	7424.99	875.72	859.35	295.28	40°10'38.071"N	104°46'11.296"W	2.74	
8210.00	91.440	357.540	7422.48	961.15	945.20	290.98	40°10'38.920"N	104°46'11.351"W	1.08	
8293.00	90.700	357.780	7420.93	1043.71	1028.12	287.59	40°10'39.739"N	104°46'11.395"W	0.94	
8378.00	90.180	358.170	7420.28	1128.31	1113.06	284.59	40°10'40.578"N	104°46'11.434"W	0.76	
8464.00	90.430	0.120	7419.82	1214.06	1199.05	283.31	40°10'41.428"N	104°46'11.450"W	2.29	
8549.00	88.920	359.820	7420.30	1298.90	1284.04	283.26	40°10'42.268"N	104°46'11.451"W	1.81	
8635.00	89.440	0.930	7421.53	1384.76	1370.03	283.83	40°10'43.118"N	104°46'11.443"W	1.43	
8720.00	89.570	0.980	7422.27	1469.67	1455.02	285.24	40°10'43.957"N	104°46'11.425"W	0.16	
8805.00	90.610	1.710	7422.14	1554.61	1539.99	287.24	40°10'44.797"N	104°46'11.399"W	1.49	
8891.00	90.370	1.120	7421.40	1640.55	1625.96	289.36	40°10'45.647"N	104°46'11.372"W	0.74	
8976.00	89.440	2.310	7421.54	1725.51	1710.92	291.90	40°10'46.486"N	104°46'11.339"W	1.78	
9061.00	88.250	2.740	7423.25	1810.48	1795.82	295.65	40°10'47.325"N	104°46'11.291"W	1.49	
9147.00	88.850	3.380	7425.43	1896.45	1881.67	300.24	40°10'48.174"N	104°46'11.232"W	1.02	
9232.00	89.200	0.200	7426.88	1981.39	1966.60	302.89	40°10'49.013"N	104°46'11.198"W	3.76	
9318.00	90.370	1.690	7427.20	2067.30	2052.59	304.31	40°10'49.863"N	104°46'11.179"W	2.20	
9403.00	90.180	359.590	7426.79	2152.19	2137.58	305.26	40°10'50.703"N	104°46'11.167"W	2.48	
9488.00	91.100	0.580	7425.84	2237.03	2222.57	305.39	40°10'51.542"N	104°46'11.165"W	1.59	
9573.00	90.770	358.880	7424.46	2321.83	2307.55	304.99	40°10'52.382"N	104°46'11.171"W	2.04	
9659.00	90.740	358.070	7423.32	2407.50	2393.51	302.70	40°10'53.232"N	104°46'11.200"W	0.94	
9744.00	89.410	356.660	7423.21	2492.01	2478.42	298.79	40°10'54.071"N	104°46'11.250"W	2.28	
9829.00	89.510	358.560	7424.01	2576.55	2563.34	295.24	40°10'54.910"N	104°46'11.296"W	2.24	
9915.00	90.830	358.880	7423.76	2662.25	2649.32	293.32	40°10'55.760"N	104°46'11.321"W	1.58	
9998.00	90.560	358.160	7422.75	2744.93	2732.28	291.18	40°10'56.579"N	104°46'11.348"W	0.93	
10083.00	89.470	358.710	7422.73	2829.60	2817.25	288.86	40°10'57.419"N	104°46'11.378"W	1.44	
10167.00	90.540	359.160	7422.72	2913.34	2901.23	287.30	40°10'58.249"N	104°46'11.398"W	1.38	
10253.00	88.610	359.450	7423.36	2999.10	2987.22	286.25	40°10'59.099"N	104°46'11.412"W	2.27	
10338.00	89.290	359.380	7424.92	3083.87	3072.20	285.39	40°10'59.939"N	104°46'11.423"W	0.80	



Actual Wellpath Report

RATTLER 4C-34HZ AWP

Page 5 of 7



REFERENCE WELLPATH IDENTIFICATION

Operator	KERR-MCGEE OIL & GAS ONSHORE LP	Slot	SLOT#11 RATTLER 4C-34HZ (200'FSL & 523'FWL, SEC.34)
Area	COLORADO	Well	RATTLER 4C-34HZ
Field	WELD COUNTY (KERR MCGEE)	Wellbore	RATTLER 4C-34HZ AWB
Facility	SEC.34-T3N-R66W		

WELLPATH DATA (153 stations)

MD [ft]	Inclination [°]	Azimuth [°]	TVD [ft]	Vert Sect [ft]	North [ft]	East [ft]	Latitude	Longitude	DLS [°/100ft]	Comments
10423.00	90.030	359.140	7425.42	3168.64	3157.19	284.29	40°11'00.778"N	104°46'11.437"W	0.92	
10508.00	90.640	359.580	7424.92	3253.42	3242.18	283.34	40°11'01.618"N	104°46'11.449"W	0.88	
10593.00	90.760	0.520	7423.88	3338.25	3327.18	283.41	40°11'02.458"N	104°46'11.448"W	1.11	
10678.00	89.750	359.800	7423.51	3423.11	3412.17	283.65	40°11'03.298"N	104°46'11.445"W	1.46	
10763.00	89.410	0.240	7424.13	3507.95	3497.17	283.68	40°11'04.138"N	104°46'11.445"W	0.65	
10848.00	88.310	0.050	7425.82	3592.79	3582.15	283.90	40°11'04.978"N	104°46'11.442"W	1.31	
10934.00	88.930	0.210	7427.89	3678.62	3668.13	284.09	40°11'05.827"N	104°46'11.440"W	0.74	
11019.00	89.260	359.300	7429.23	3763.42	3753.11	283.73	40°11'06.667"N	104°46'11.444"W	1.14	
11104.00	87.650	0.320	7431.53	3848.21	3838.08	283.45	40°11'07.507"N	104°46'11.448"W	2.24	
11189.00	87.660	0.340	7435.00	3933.01	3923.01	283.93	40°11'08.346"N	104°46'11.442"W	0.03	
11274.00	87.910	0.360	7438.29	4017.82	4007.94	284.45	40°11'09.186"N	104°46'11.435"W	0.30	
11358.00	88.920	0.870	7440.61	4101.68	4091.90	285.35	40°11'10.015"N	104°46'11.423"W	1.35	
11443.00	88.830	0.200	7442.28	4186.55	4176.88	286.15	40°11'10.855"N	104°46'11.413"W	0.80	
11528.00	89.410	359.410	7443.59	4271.37	4261.87	285.86	40°11'11.695"N	104°46'11.417"W	1.15	
11613.00	89.780	359.260	7444.19	4356.14	4346.86	284.87	40°11'12.535"N	104°46'11.429"W	0.47	
11699.00	89.380	358.820	7444.82	4441.88	4432.85	283.43	40°11'13.384"N	104°46'11.448"W	0.69	
11795.00	89.570	358.580	7445.70	4537.54	4528.82	281.25	40°11'14.333"N	104°46'11.476"W	0.32	Last BHI MWD Survey
11856.00	89.570	358.580	7446.16	4598.32	4589.80	279.74	40°11'14.935"N	104°46'11.496"W	0.00	Projection to Bit

HOLE & CASING SECTIONS - Ref Wellbore: RATTLER 4C-34HZ AWB Ref Wellpath: RATTLER 4C-34HZ AWP

String/Diameter	Start MD [ft]	End MD [ft]	Interval [ft]	Start TVD [ft]	End TVD [ft]	Start N/S [ft]	Start E/W [ft]	End N/S [ft]	End E/W [ft]
12.25in Open Hole	17.00	917.00	900.00	17.00	916.99	0.00	0.00	0.77	-0.61
9.625in Casing Surface	17.00	917.00	900.00	17.00	916.99	0.00	0.00	0.77	-0.61
8.75in Open Hole	917.00	7905.00	6988.00	916.99	7425.47	0.77	-0.61	640.74	306.52
7in Casing Intermediate	17.00	7895.00	7878.00	17.00	7424.93	0.00	0.00	630.79	307.38
6.125in Open Hole	7895.00	11856.00	3961.00	7424.93	7446.16	630.79	307.38	4589.80	279.74



Actual Wellpath Report

RATTLER 4C-34HZ AWP

Page 6 of 7



REFERENCE WELLPATH IDENTIFICATION

Operator	KERR-MCGEE OIL & GAS ONSHORE LP	Slot	SLOT#11 RATTLER 4C-34HZ (200'FSL & 523'FWL, SEC.34)
Area	COLORADO	Well	RATTLER 4C-34HZ
Field	WELD COUNTY (KERR MCGEE)	Wellbore	RATTLER 4C-34HZ AWB
Facility	SEC.34-T3N-R66W		

TARGETS

Name	MD [ft]	TVD [ft]	North [ft]	East [ft]	Grid East [US ft]	Grid North [US ft]	Latitude	Longitude	Shape
RATTLER SECTION 34 LINES		0.00	-0.71	-59.77	3203684.99	1307389.26	40°10'29.572"N	104°46'15.870"W	polygon
RATTLER SEC.34 HARDLINES (460' SETBACKS)		7200.00	-0.71	-59.77	3203684.99	1307389.26	40°10'29.572"N	104°46'15.870"W	polygon
RATTLER 4C-34HZ BHL ON PLAT (460'FNL & 825'FWL, SEC.34) REV-1		7439.00	4614.95	279.40	3203986.18	1312007.35	40°11'15.184"N	104°46'11.500"W	point

WELLPATH COMPOSITION - Ref Wellbore: RATTLER 4C-34HZ AWB Ref Wellpath: RATTLER 4C-34HZ AWP

Start MD [ft]	End MD [ft]	Positional Uncertainty Model	Log Name/Comment	Wellbore
17.00	857.00	Gyrodatta standard - Continuous gyro	GYRODATA SURVEYS <117-857>	RATTLER 4C-34HZ AWB
857.00	7859.00	NaviTrak (Standard)	BHI MWD SURVEYS 8 3/4" HOLE <981-7859>	RATTLER 4C-34HZ AWB
7859.00	11795.00	NaviTrak (Standard)	BHI MWD SURVEYS 6 1/8" HOLE <7954-11795>	RATTLER 4C-34HZ AWB
11795.00	11856.00	Blind Drilling (std)	Projection to bit	RATTLER 4C-34HZ AWB



Actual Wellpath Report

RATTLER 4C-34HZ AWP

Page 7 of 7



REFERENCE WELLPATH IDENTIFICATION

Operator	KERR-MCGEE OIL & GAS ONSHORE LP	Slot	SLOT#11 RATTLER 4C-34HZ (200'FSL & 523'FWL, SEC.34)
Area	COLORADO	Well	RATTLER 4C-34HZ
Field	WELD COUNTY (KERR MCGEE)	Wellbore	RATTLER 4C-34HZ AWB
Facility	SEC.34-T3N-R66W		

WELLPATH COMMENTS

MD [ft]	Inclination [°]	Azimuth [°]	TVD [ft]	Comment
17.00	0.000	27.900	17.00	Tie-On
117.00	0.270	27.900	117.00	Begin GYRO Surveys
857.00	0.180	358.510	856.99	Tie-Into GYRO Surveys
981.00	0.650	277.980	980.99	Begin BHI MWD Surveys
7895.00	86.730	355.037	7424.93	7" Casing Point
11795.00	89.570	358.580	7445.70	Last BHI MWD Survey
11856.00	89.570	358.580	7446.16	Projection to Bit