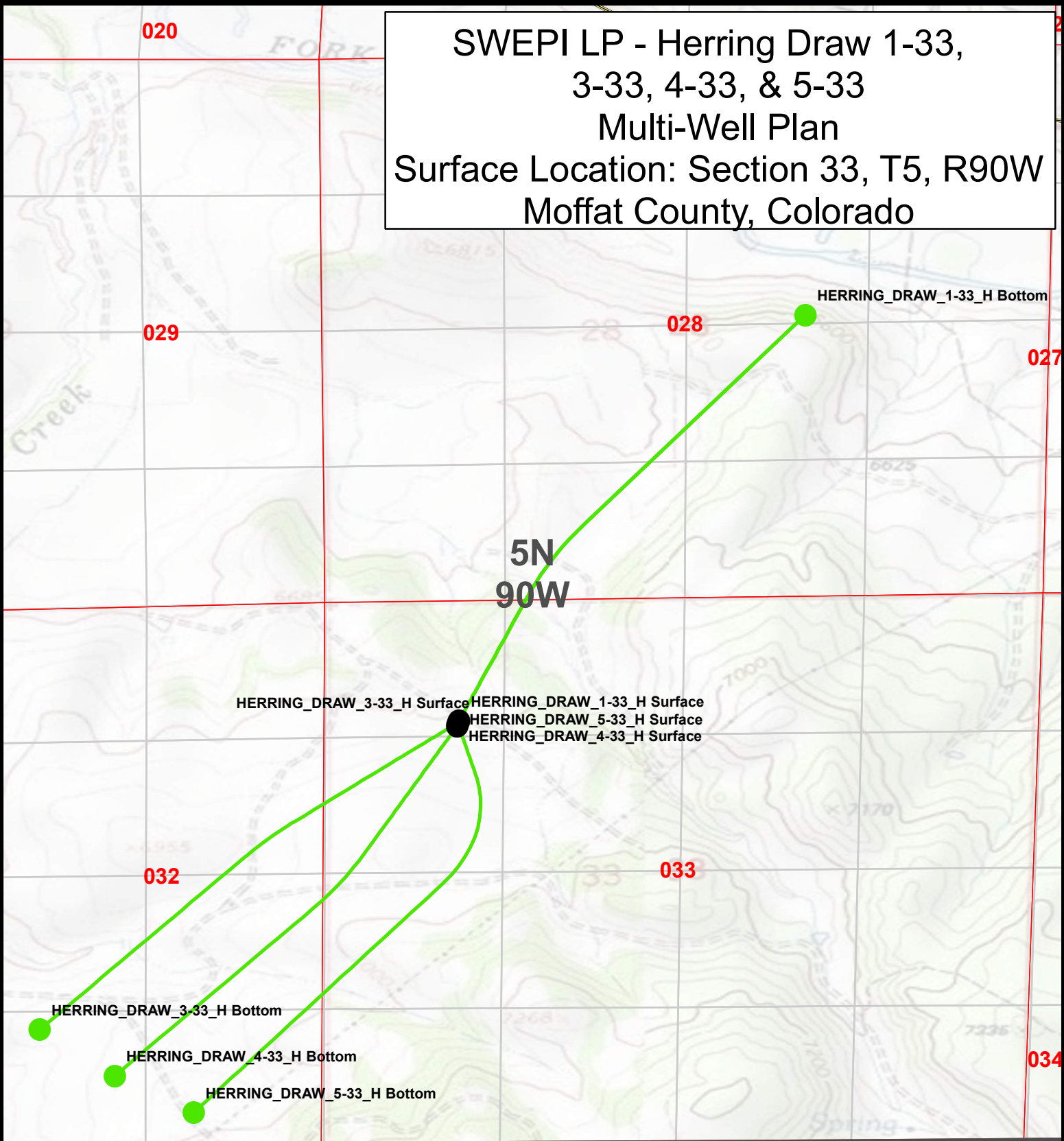







SWEPI LP - Herring Draw 1-33,
3-33, 4-33, & 5-33
Multi-Well Plan
Surface Location: Section 33, T5, R90W
Moffat County, Colorado



Legend

-  Bottom Hole Location
-  Surface Hole Location
-  Section
-  Quarter Quarter
-  Townships

0 625 1,250 2,500 Feet

