

Project: Wattenberg Field
Site: LF (Sec.5-T8N-R60W) Weld County, CO
Well: Shable LF05-62HN
Wellbore: Original Drilling
Design: APD - Rev 0

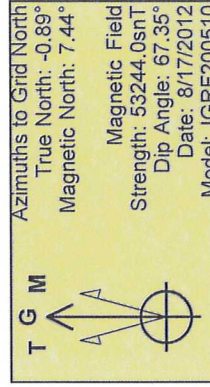
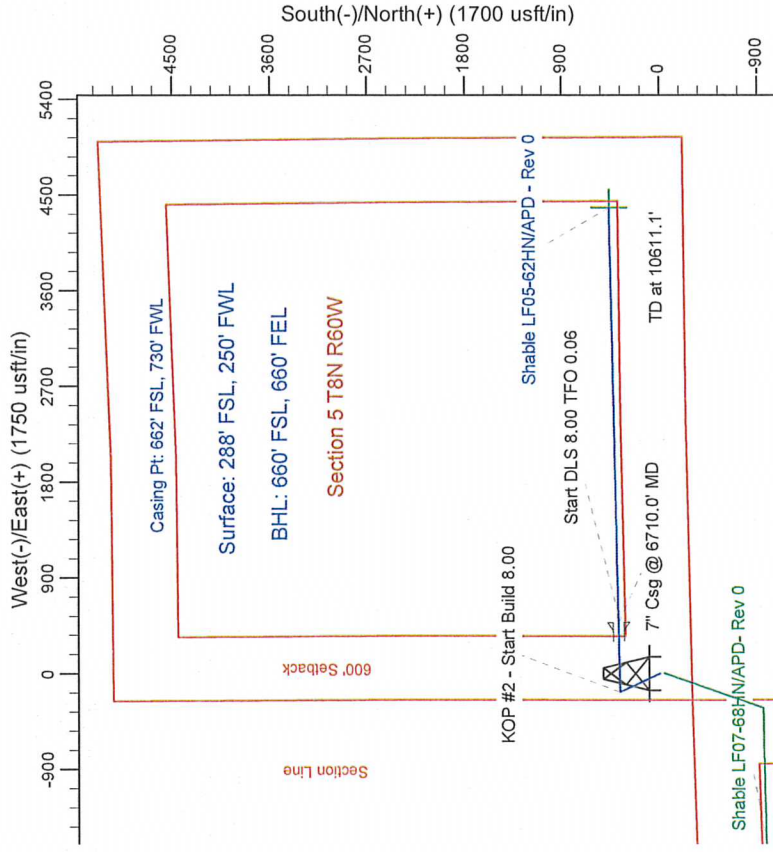
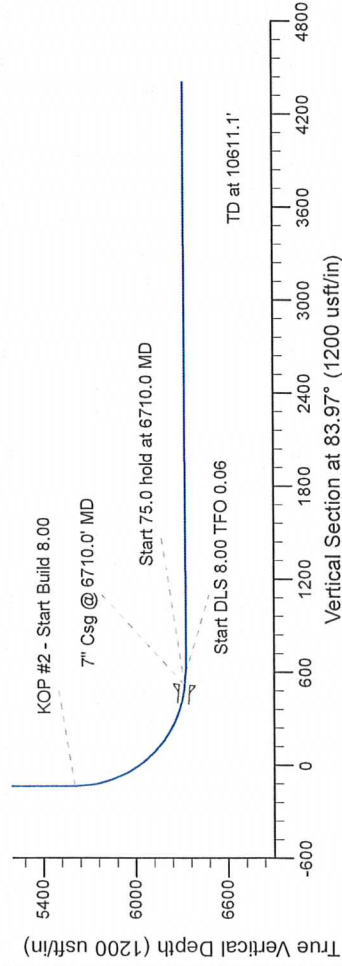
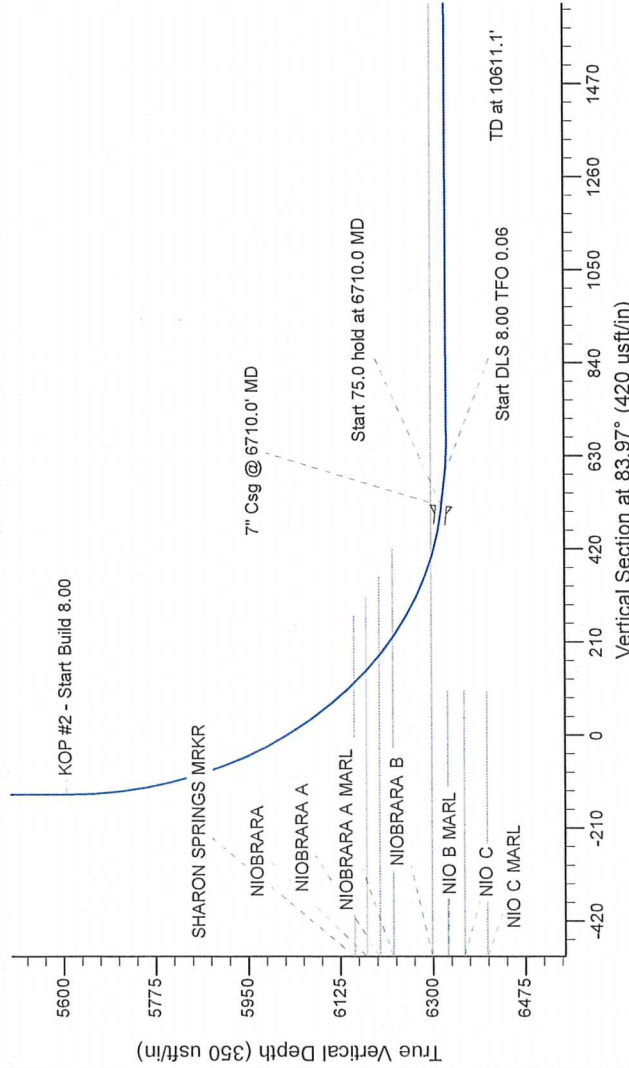
Northern Region Drilling

Geodetic System: US State Plane 1983
Datum: North American Datum 1983
Ellipsoid: GRS 1980
Zone: Colorado Northern Zone
System Datum: Mean Sea Level

SECTION DETAILS

Sec	MD	Inc	Azi	TVD	+N/-S	+E/-W	Dleg	TFace	VSect	Target
1	0.0	0.00	0.00	0.0	0.0	0.0	0.00	0.00	0.0	0.0
2	1800.0	0.00	0.00	1800.0	0.0	0.0	0.00	0.00	0.0	0.0
3	2321.2	13.03	334.81	2316.7	53.4	-25.1	2.50	334.81	-19.4	0.0
4	3621.3	13.03	334.81	3583.3	318.6	-149.9	0.00	0.00	-115.6	0.0
5	4142.4	0.00	0.00	4100.0	372.0	-175.0	2.50	180.00	-135.0	0.0
6	5647.5	85.00	0.00	5605.1	383.0	-476.6	0.00	88.86	500.4	0.0
7	6710.0	85.00	88.86	6316.3	385.0	-476.6	0.00	88.86	500.4	0.0
8	6765.0	85.00	88.86	6323.1	385.3	-477.0	0.00	0.06	654.3	0.0
9	6846.7	50.10	88.87	6321.3	462.3	-4378.6	0.00	0.00	4403.0	0.0
10	10611.1	50.10	88.87	6321.3	462.3	-4378.6	0.00	0.00	4403.0	0.0

Shable LF05-62HN BHL 660'FSL, 660'FEL



WELL DETAILS: Shable LF05-62HN

Ground Level	4921.0	Longitude
North	1495288.06	-104.123456
East	3381755.64	40.684825

Plan: APD - Rev 0 (Shable LF05-62HN/Original Drilling)

Created By: Carrie Willers	Date: 13/21, August 20 2012
Checked:	Date:
Reviewed:	Date:
Approved:	Date: