

T3N, R68W, 6th. P.M.

Priv. Alum. Cop.
0.8' Below Ground in E
Gravel Road E-W, LS #2209
Lat: 40.248031°
Long: 104.960797°

GREAT WESTERN OIL & GAS COMPANY

Well location, POSTLE IC #12-11D (SURFACE LOCATION), located as shown in the SE 1/4 NE 1/4 of Section 11, T3N, R68W, 6th. P.M., Weld County, Colorado.

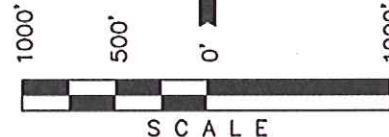
BASIS OF ELEVATION

USGS COOPERATIVE BASE NETWORK CONTROL STATION, DESIGNATION 'VERMILYEA'. NGS DATA SHEET LISTS THE NAVD 88 ELEVATION AS BEING 5026 FEET.

BASIS OF BEARINGS

BASIS OF BEARINGS IS A G.P.S. OBSERVATION.

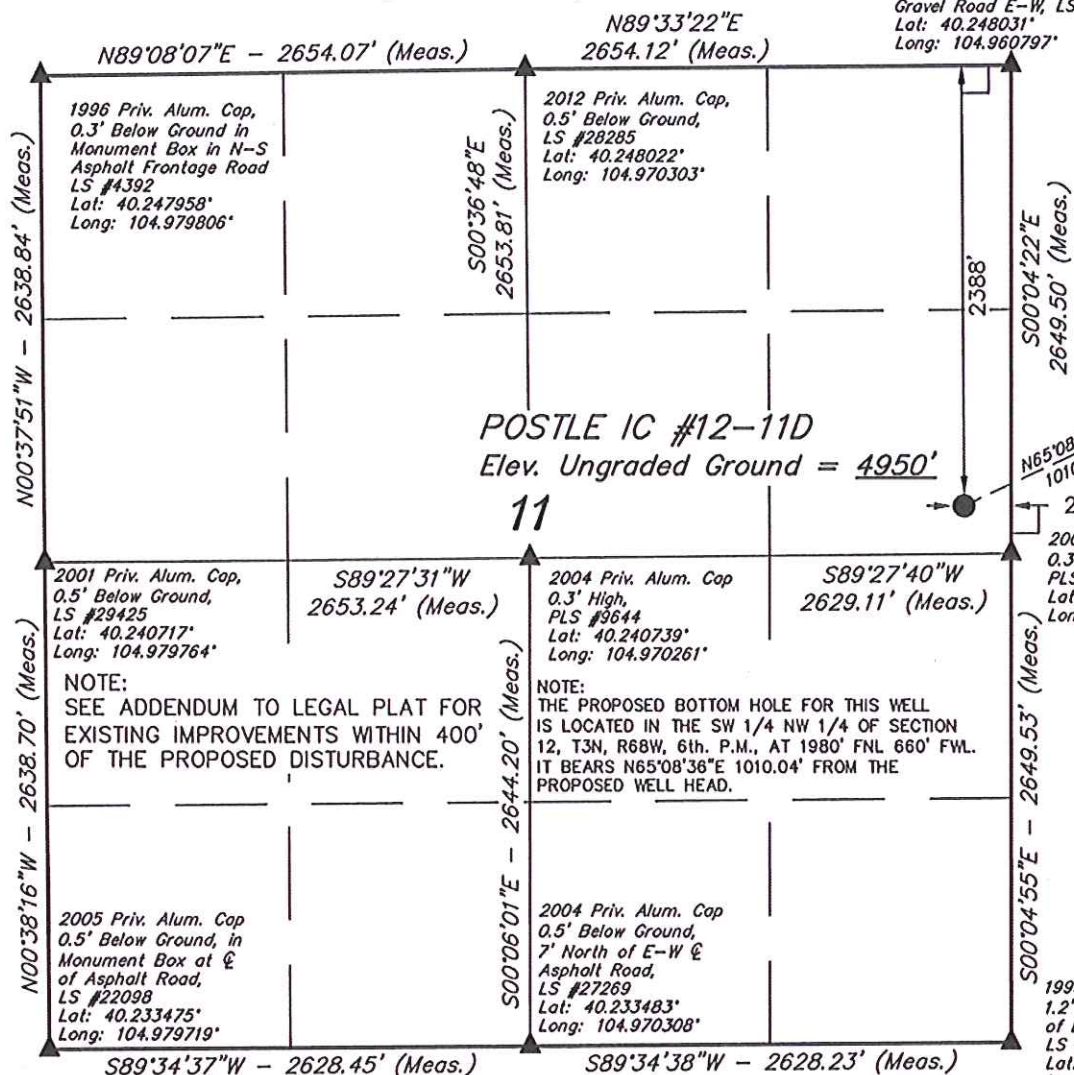
Target Bottom Hole



CERTIFICATE

THIS IS TO CERTIFY THAT THE ABOVE PLAT WAS PREPARED FROM FIELD NOTES OF ACTUAL SURVEYS MADE BY ME OR UNDER MY SUPERVISION AND THAT THE SAME ARE TRUE AND CORRECT TO THE BEST OF MY KNOWLEDGE AND BELIEF.

ROBERT L. [Signature]
REGISTERED LAND SURVEYOR
REGISTRATION NO. 17492
STATE OF COLORADO
09-10-12



LEGEND:

- └─ = 90° SYMBOL
- = PROPOSED WELL HEAD.
- ▲ = SECTION CORNERS LOCATED.

PDOP = 1.1

NAD 83 (SURFACE LOCATION)	
LATITUDE	= 40°14'29.31" (40.241475)
LONGITUDE	= 104°57'42.35" (104.961764)
NAD 27 (SURFACE LOCATION)	
LATITUDE	= 40°14'29.37" (40.241492)
LONGITUDE	= 104°57'40.43" (104.961231)

UINTAH ENGINEERING & LAND SURVEYING

85 SOUTH 200 EAST - VERNAL, UTAH 84078

(435) 789-1017

SCALE 1" = 1000'	DATE SURVEYED: 08-24-12	DATE DRAWN: 08-31-12
PARTY J.H. C.M H.K.W.	REFERENCES G.L.O. PLAT	
WEATHER HOT	FILE GREAT WESTERN OIL & GAS COMPANY	

T3N, R68W, 6th. P.M.

Priv. Alum. Cap,
0.8' Below Ground in E Gravel
Road E-W, LS #2209
Lat: 40.248031°
Long: 104.960797°

R
68
W

R
67
W

GREAT WESTERN OIL & GAS COMPANY

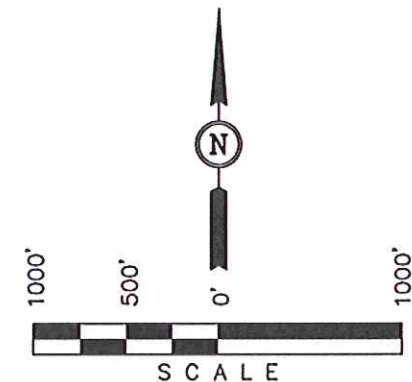
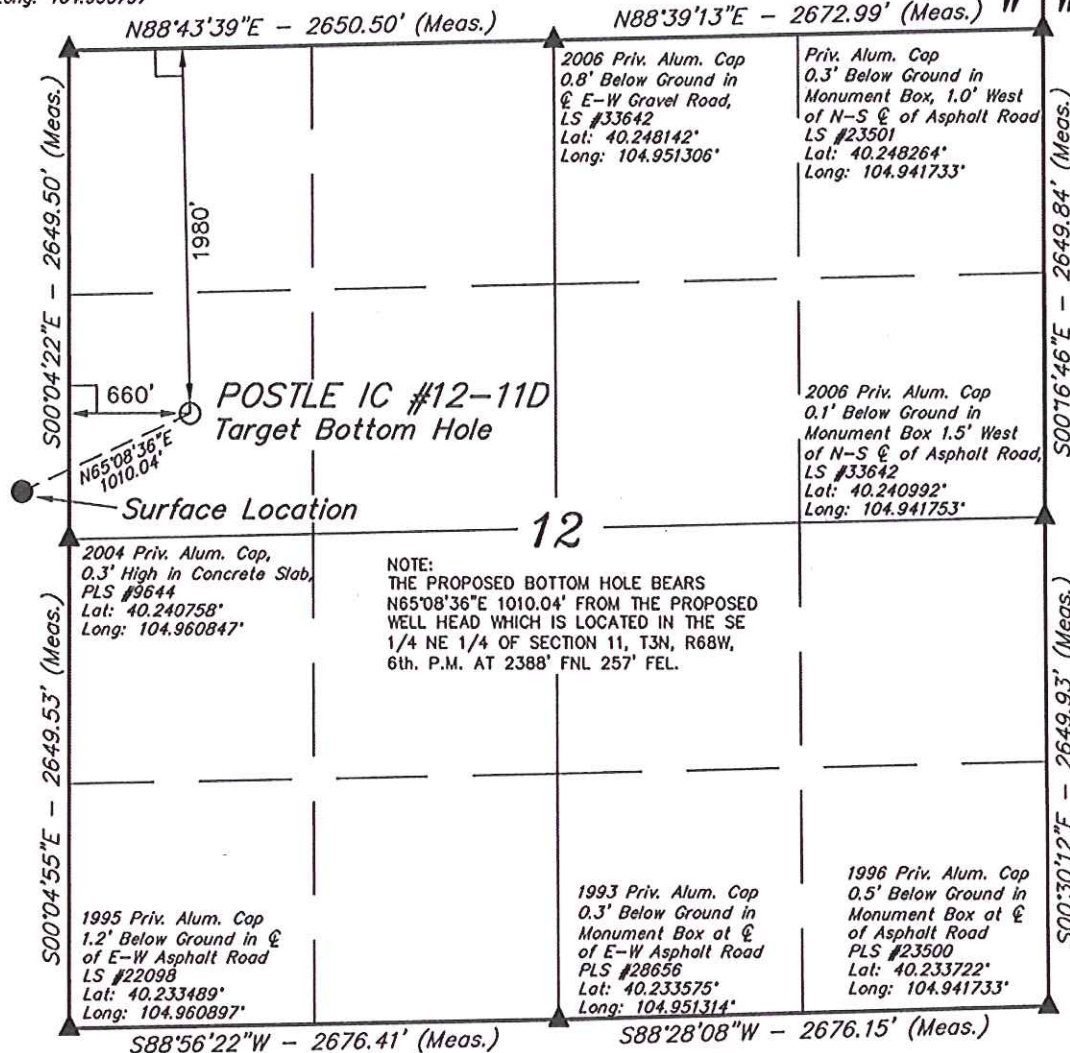
Well location, POSTLE IC #12-11D (TARGET
BOTTOM HOLE), located as shown in the SW 1/4
NW 1/4 of Section 12, T3N, R68W, 6th. P.M., Weld
County, Colorado.

BASIS OF ELEVATION

USGS COOPERATIVE BASE NETWORK CONTROL STATION,
DESIGNATION 'VERMILYEA'. NGS DATA SHEET LISTS THE
NAVD 88 ELEVATION AS BEING 5026 FEET.

BASIS OF BEARINGS

BASIS OF BEARINGS IS A G.P.S. OBSERVATION.



CERTIFICATE

THIS IS TO CERTIFY THAT THE ABOVE PLAT WAS PREPARED FROM
FIELD NOTES OF ACTUAL SURVEYS MADE BY ME OR UNDER MY
SUPERVISION AND THAT THE SAME ARE TRUE AND CORRECT TO THE
BEST OF MY KNOWLEDGE AND BELIEF.

REGISTERED LAND SURVEYOR
REGISTRATION NO. 17492
STATE OF COLORADO
09-10-12

LEGEND:

- └─┘ = 90° SYMBOL
- = PROPOSED WELL HEAD.
- ▲ = SECTION CORNERS LOCATED.

NAD 83 (TARGET BOTTOM HOLE)
LATITUDE = 40°14'33.44" (40.242622)
LONGITUDE = 104°57'30.50" (104.958472)
NAD 27 (TARGET BOTTOM HOLE)
LATITUDE = 40°14'33.50" (40.242639)
LONGITUDE = 104°57'28.58" (104.957939)

UINTAH ENGINEERING & LAND SURVEYING

85 SOUTH 200 EAST - VERNAL, UTAH 84078

(435) 789-1017

SCALE 1" = 1000'	DATE SURVEYED: 08-24-12	DATE DRAWN: 08-31-12
PARTY J.H. C.M. H.K.W.	REFERENCES G.L.O. PLAT	
WEATHER HOT	FILE GREAT WESTERN OIL & GAS COMPANY	