

T3N, R68W, 6th. P.M.

Priv. Alum. Cap,
0.8' Below Ground in E
Gravel Road E-W, LS #2209
Lat: 40.248031°
Long: 104.960797°

GREAT WESTERN OIL & GAS COMPANY

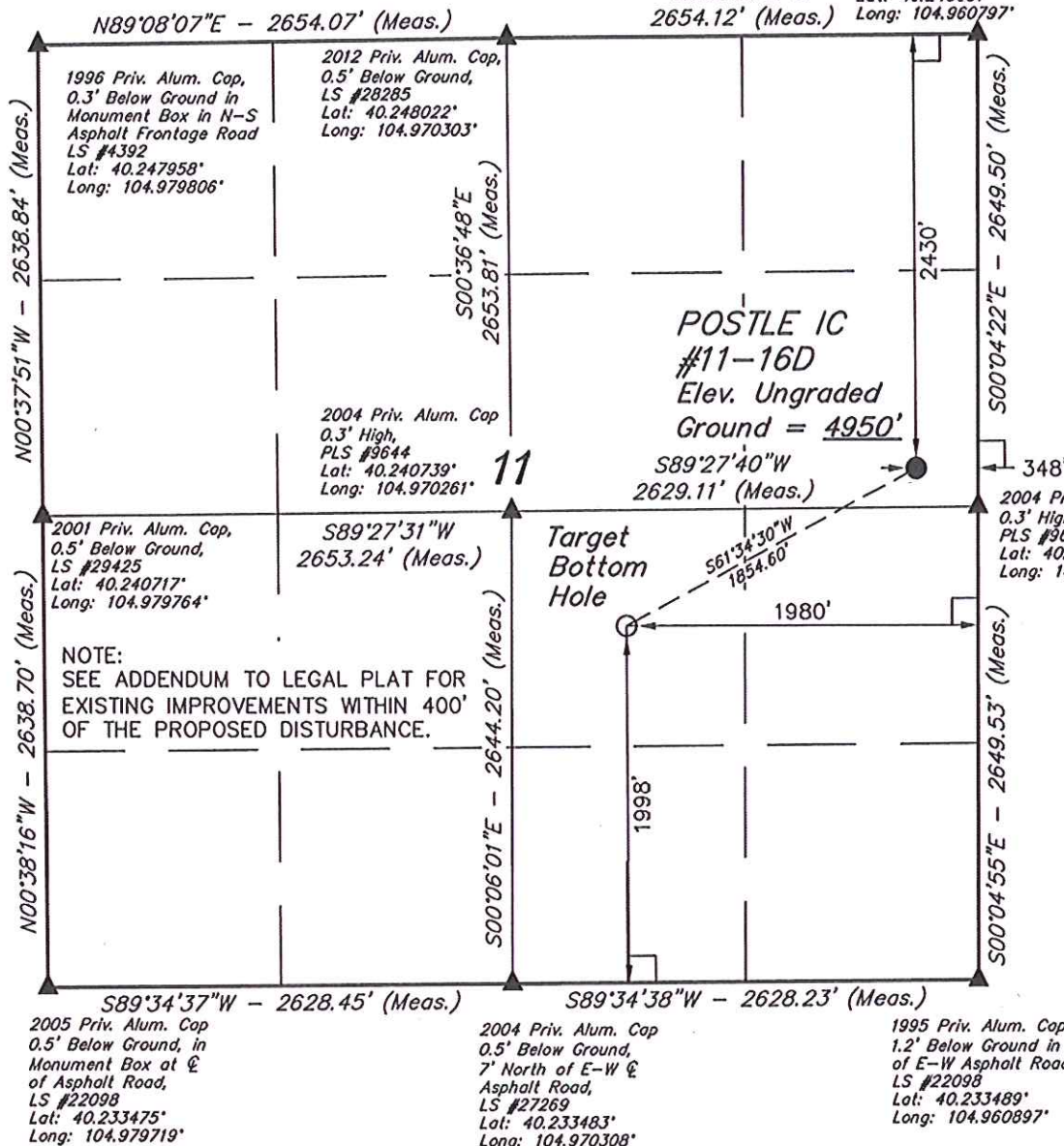
Well location, POSTLE IC #11-16D, located as shown in the SE 1/4 NE 1/4 of Section 11, T3N, R68W, 6th. P.M., Weld County, Colorado.

BASIS OF ELEVATION

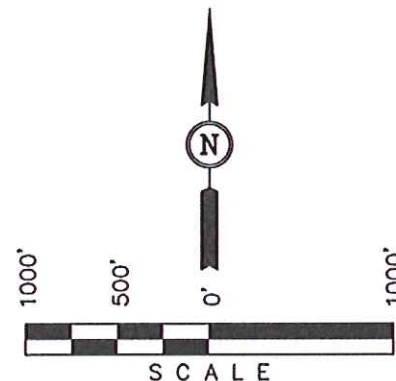
USGS COOPERATIVE BASE NETWORK CONTROL STATION, DESIGNATION 'VERMILYEA'. NGS DATA SHEET LISTS THE NAVD 88 ELEVATION AS BEING 5026 FEET.

BASIS OF BEARINGS

BASIS OF BEARINGS IS A G.P.S. OBSERVATION.



NOTE:
SEE ADDENDUM TO LEGAL PLAT FOR
EXISTING IMPROVEMENTS WITHIN 400'
OF THE PROPOSED DISTURBANCE.



CERTIFICATE

THIS IS TO CERTIFY THAT THE ABOVE PLAT WAS PREPARED FROM FIELD NOTES OF ACTUAL SURVEYS MADE BY ME OR UNDER MY SUPERVISION AND THAT THE SAME ARE TRUE AND CORRECT TO THE BEST OF MY KNOWLEDGE AND BELIEF.

REGISTERED LAND SURVEYOR
REGISTRATION NO. 17492
STATE OF COLORADO
09-10-12

UINTAH ENGINEERING & LAND SURVEYING
85 SOUTH 200 EAST - VERNAL, UTAH 84078
(435) 789-1017

LEGEND:

- └─┘ = 90° SYMBOL
- = PROPOSED WELL HEAD.
- ▲ = SECTION CORNERS LOCATED.

PDOP = 1.5

NAD 83 (TARGET BOTTOM HOLE)	NAD 83 (SURFACE LOCATION)
LATITUDE = 40°14'20.28" (40.238967)	LATITUDE = 40°14'28.90" (40.241361)
LONGITUDE = 104°58'04.62" (104.967950)	LONGITUDE = 104°57'43.52" (104.962089)
NAD 27 (TARGET BOTTOM HOLE)	NAD 27 (SURFACE LOCATION)
LATITUDE = 40°14'20.34" (40.238983)	LATITUDE = 40°14'28.96" (40.241378)
LONGITUDE = 104°58'02.70" (104.967417)	LONGITUDE = 104°57'41.60" (104.961556)

SCALE 1" = 1000'	DATE SURVEYED: 08-24-12	DATE DRAWN: 08-31-12
PARTY J.H. C.M. H.K.W.	REFERENCES G.L.O. PLAT	
WEATHER HOT	FILE GREAT WESTERN OIL & GAS COMPANY	