

GAS SPECTRUM LOG  
PROCESSED DATA  
FINAL PRINT

Company McElvain Oil & Gas Properties, Inc.  
Well Bullseye #11  
Field Pictured Cliffs  
County La Plata State Colorado

Location: API #: 05-067-09885-00  
SEC 20 TWP 33N RGE 08W  
Permanent Datum GL  
Log Measured From RKB 11' Elevation 7138'  
Drilling Measured From RIG KELLY BUSHING  
Other Services  
Elevation  
K.B. 7149'  
D.F. 7148'  
G.L. 7138'

Date May-8-2012

Run Number ONE  
Depth Driller 4108  
Depth Logger 4034'  
Bottom Logged Interval 4034'  
Top Log Interval 2260'  
Open Hole Size  
Type Fluid H2O  
Density / Viscosity  
Max. Recorded Temp.  
Estimated Cement Top  
Time Well Ready 08:30  
Time Logger on Bottom 11:00  
Equipment Number D-7 SDS GSUN  
Location Farmington NM  
Recorded By B. McKee  
Witnessed By MR. Mark Wolfe

Borehole Record				Tubing Record			
Run Number	Bit	From	To	Size	Weight	From	To

Casing Record	Size	Wgt/Ft	Top	Bottom
Surface String	8 5/8"	24#	Surface	820'
Prot. String				
Production String	5 1/2"	15.5#	Surface	4108'
Liner				
Marker Joint	3555'-3579'		3736'-3758'	

<<< Fold Here >>>

All interpretations are opinions based on inferences from electrical or other measurements and we cannot and do not guarantee the accuracy or correctness of any interpretation, and we shall not, except in the case of gross or willful negligence on our part, be liable or responsible for any loss, costs, damages, or expenses incurred or sustained by anyone resulting from any interpretation made by any of our officers, agents or employees. These interpretations are also subject to our general terms and conditions set out in our current Price Schedule.

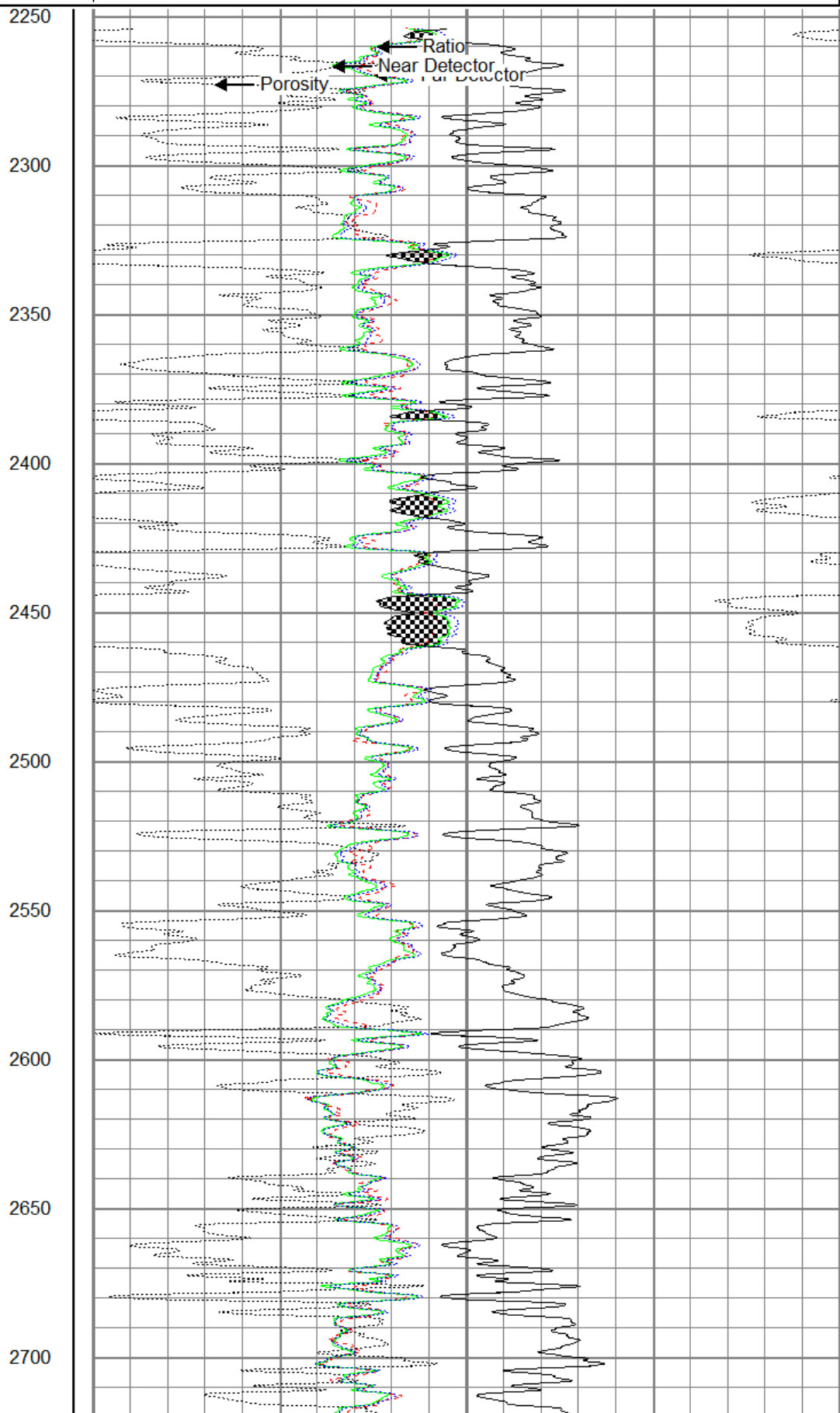
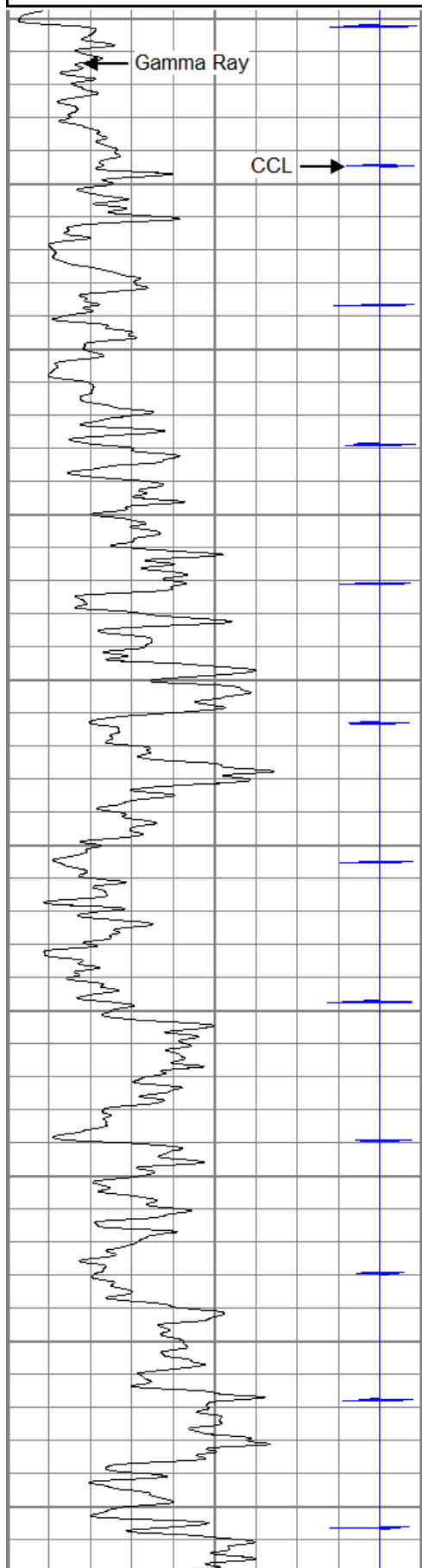
Comments

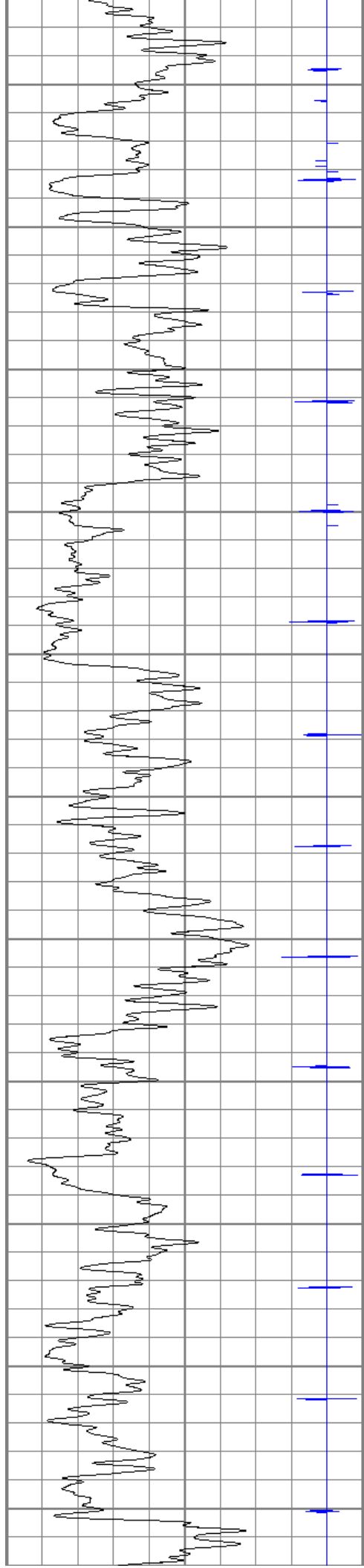
Sensor	Offset (ft)	Schematic	Description	Len (ft)	OD (in)	Wt (lb)

CCL	9.62		CCL-SPCL (SPCL1) 1 11/16" Logging CCL	1.35	1.69	10.00
GR	7.50					
			GSL-SIE (GSL_N) Comprobe GSL Tool	8.42	1.69	40.00
NEUF NEUFP NEU	1.00 1.00 0.50		NEUTRON Neutron Source	0.50	1.69	1.00
Dataset: mcelvainbullseye11gsl.db: fruitland/bullseye1/run1/pass4 Total Length: 10.27 ft Total Weight: 51.00 lb O.D. 1.69 in						

0	Gamma Ray	200
-9	CCL	1

30	Porosity (pu)	-10
850	Far Detector	45
3000	Near Detector	950
1830	Ratio (cu)	545
60	SIGMA (cu)	2





2750

2800

2850

2900

2950

3000

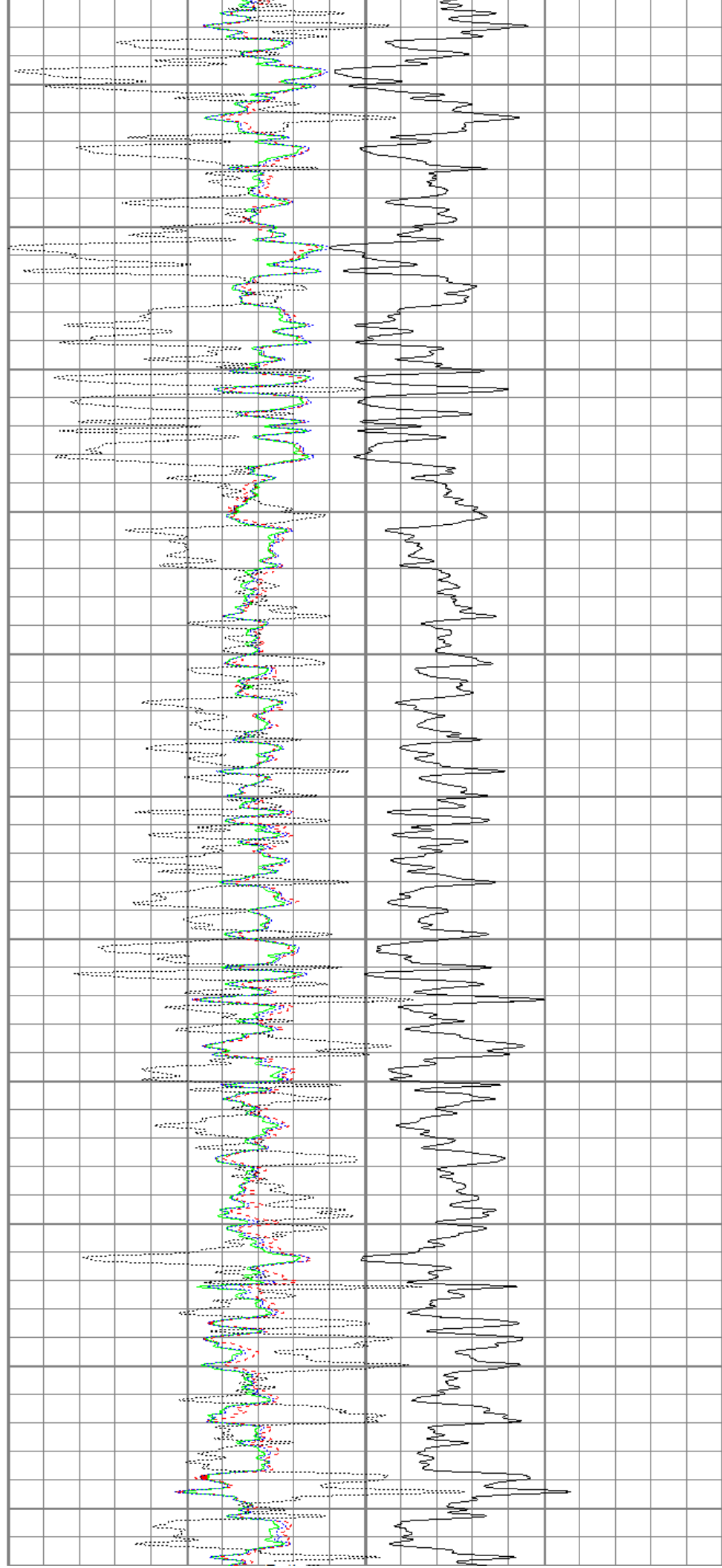
3050

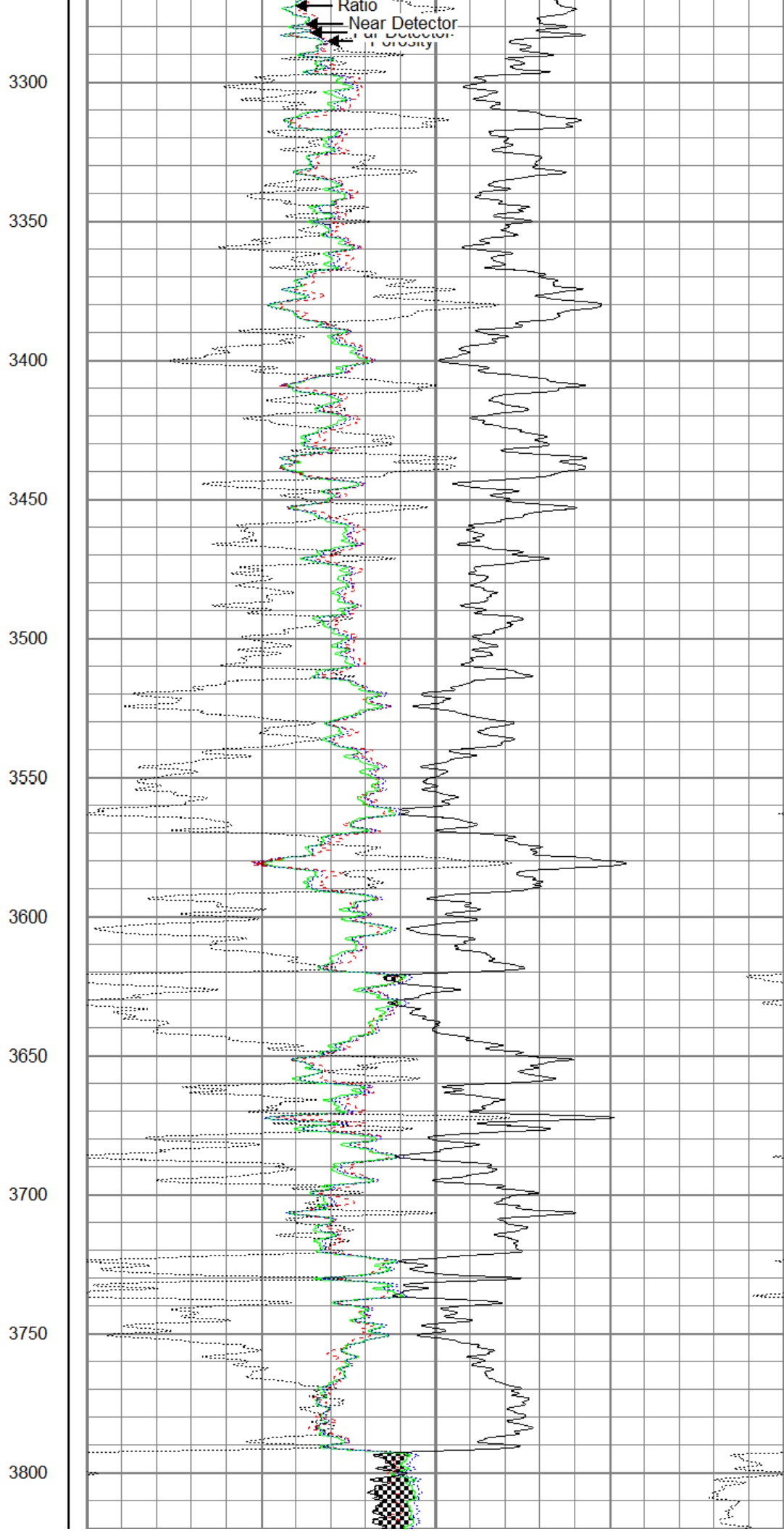
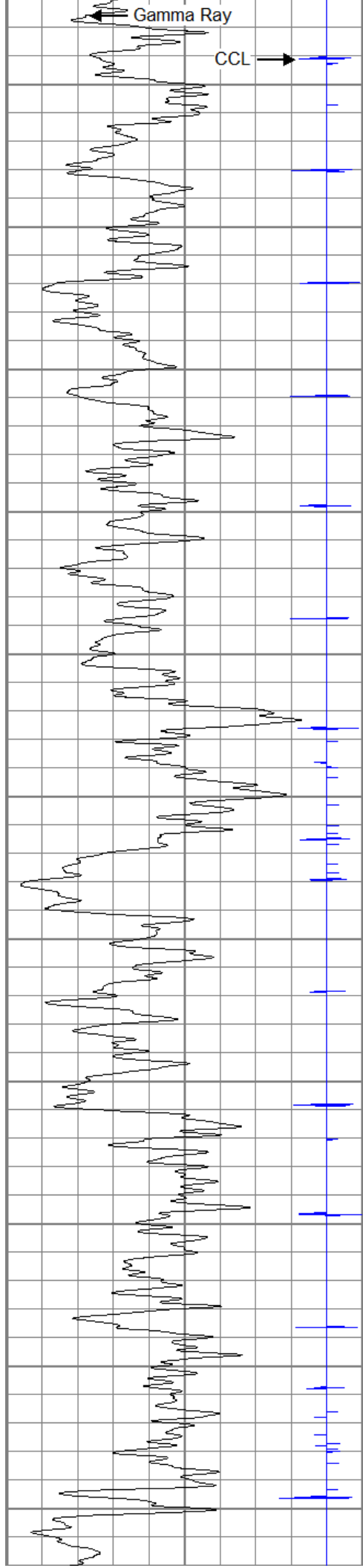
3100

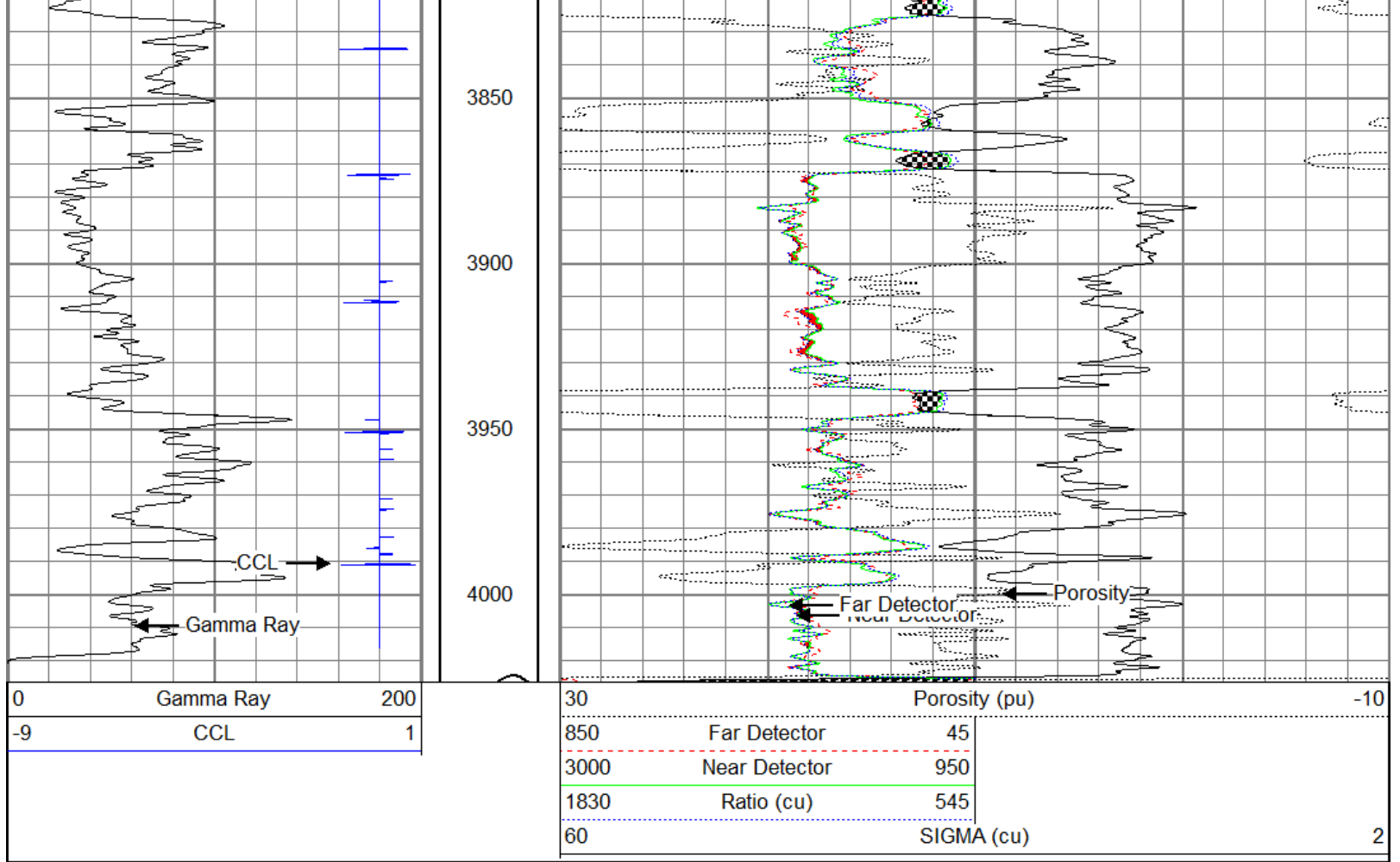
3150

3200

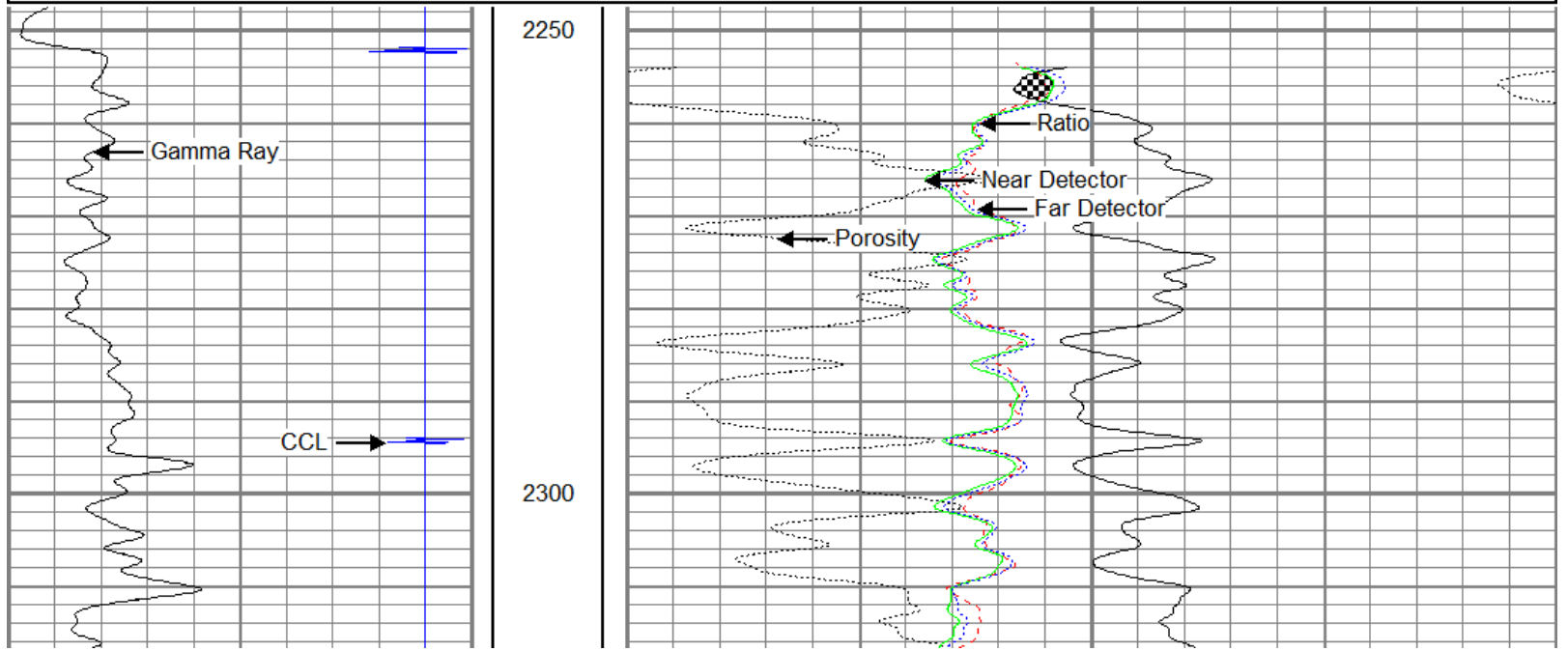
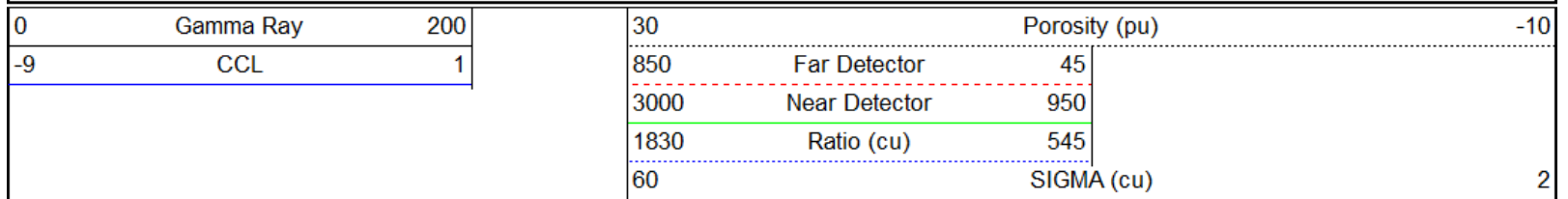
3250

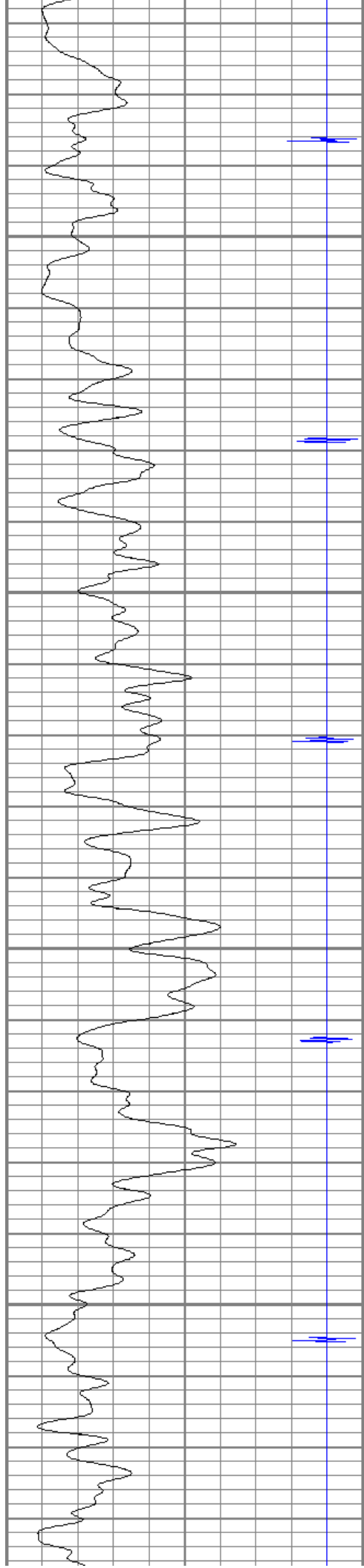






Database File: mcelvainbullseye11gsl.db  
Dataset Pathname: fruitland/bullseye1/run1/pass4.2  
Presentation Format: gslsigma  
Dataset Creation: Tue May 08 15:05:14 2012 by Calc SCH 120126  
Charted by: Depth in Feet scaled 1:240



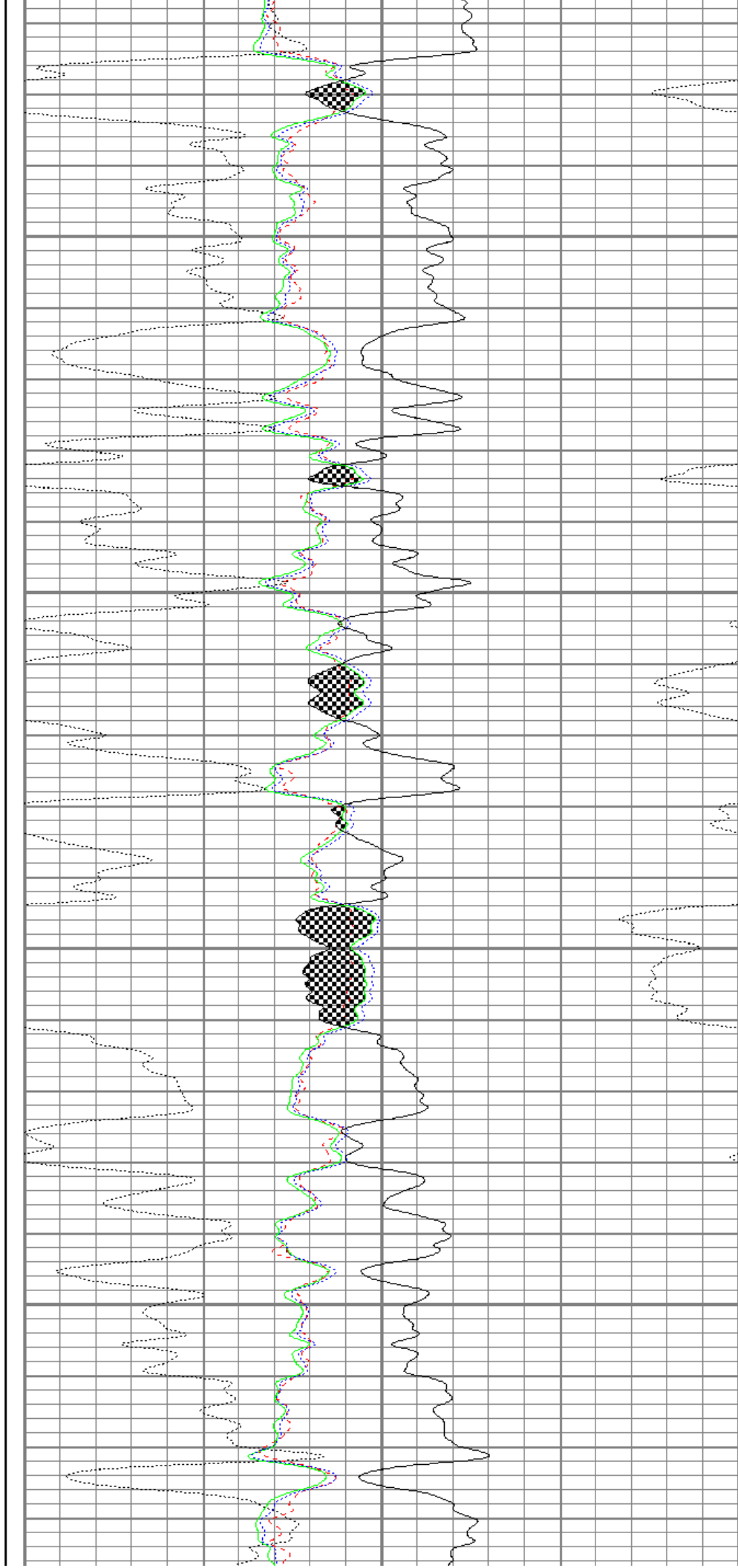


2350

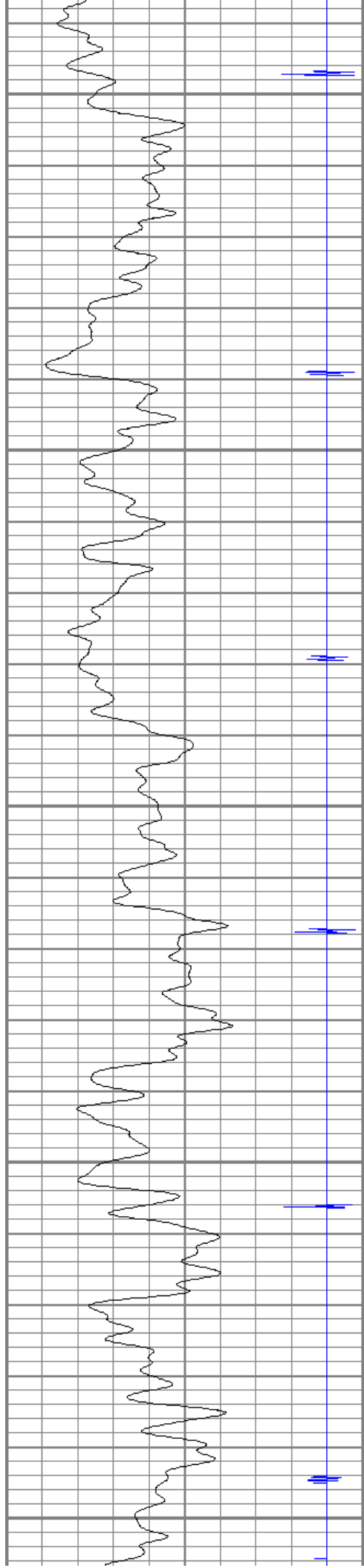
2400

2450

2500







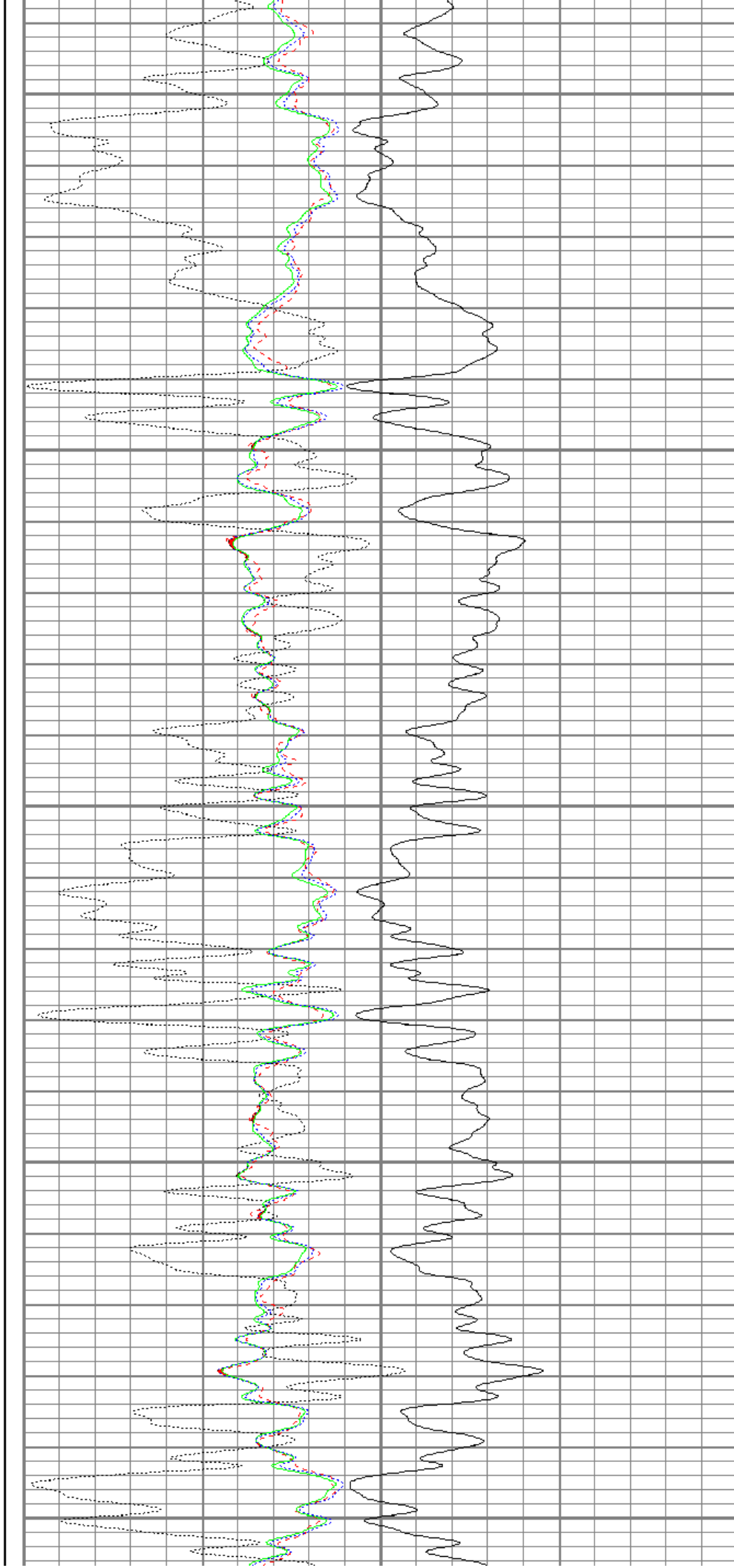
2550

2600

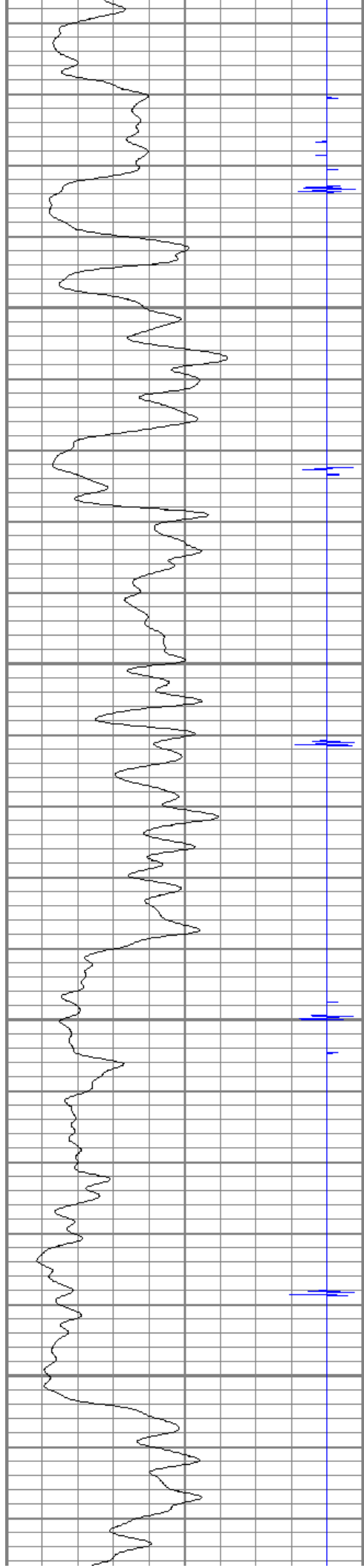
2650

2700

2750





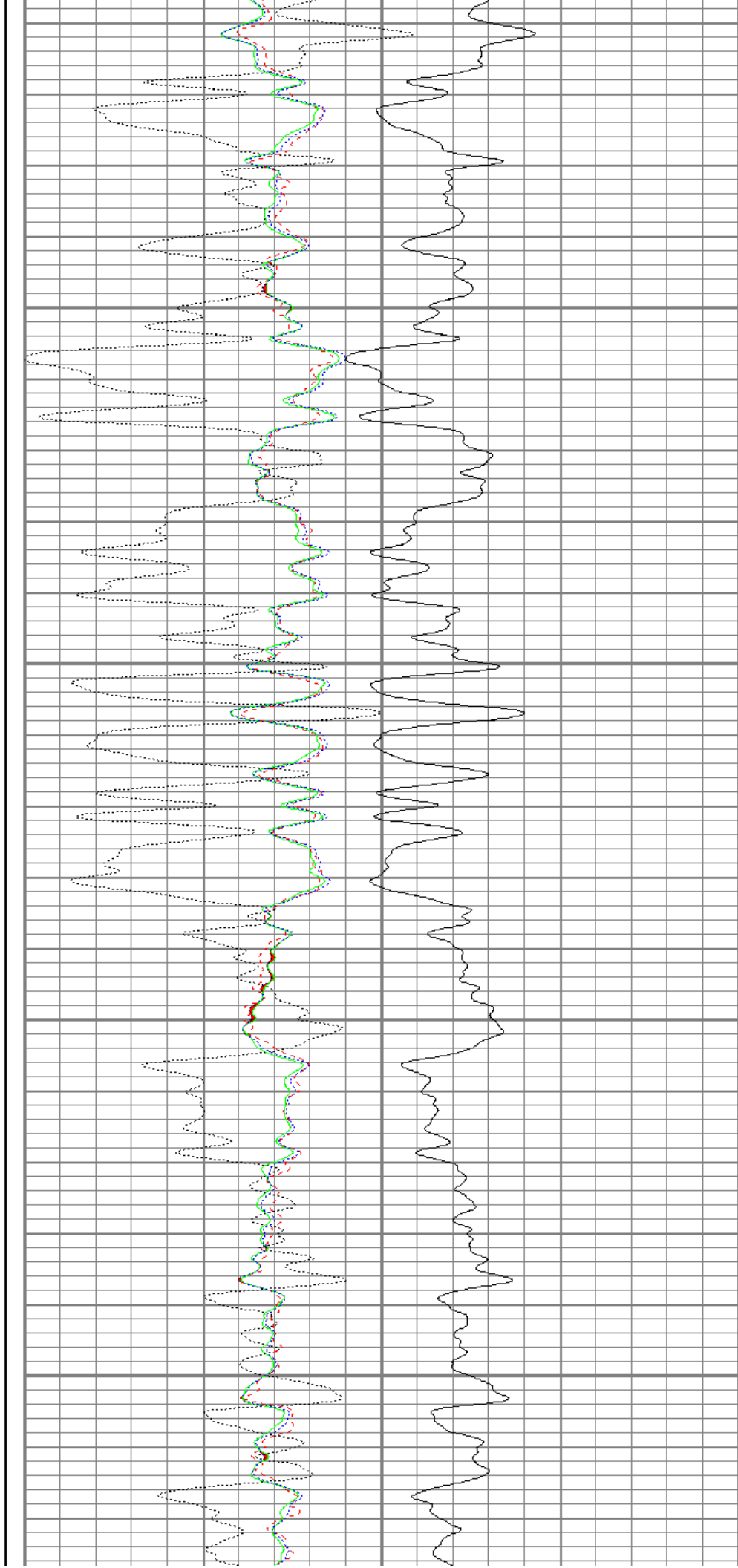


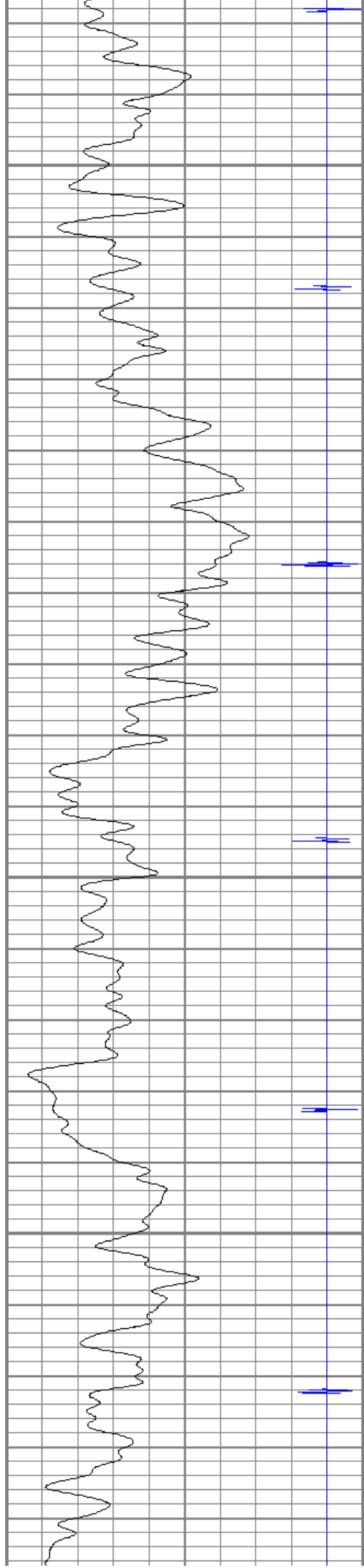
2800

2850

2900

2950



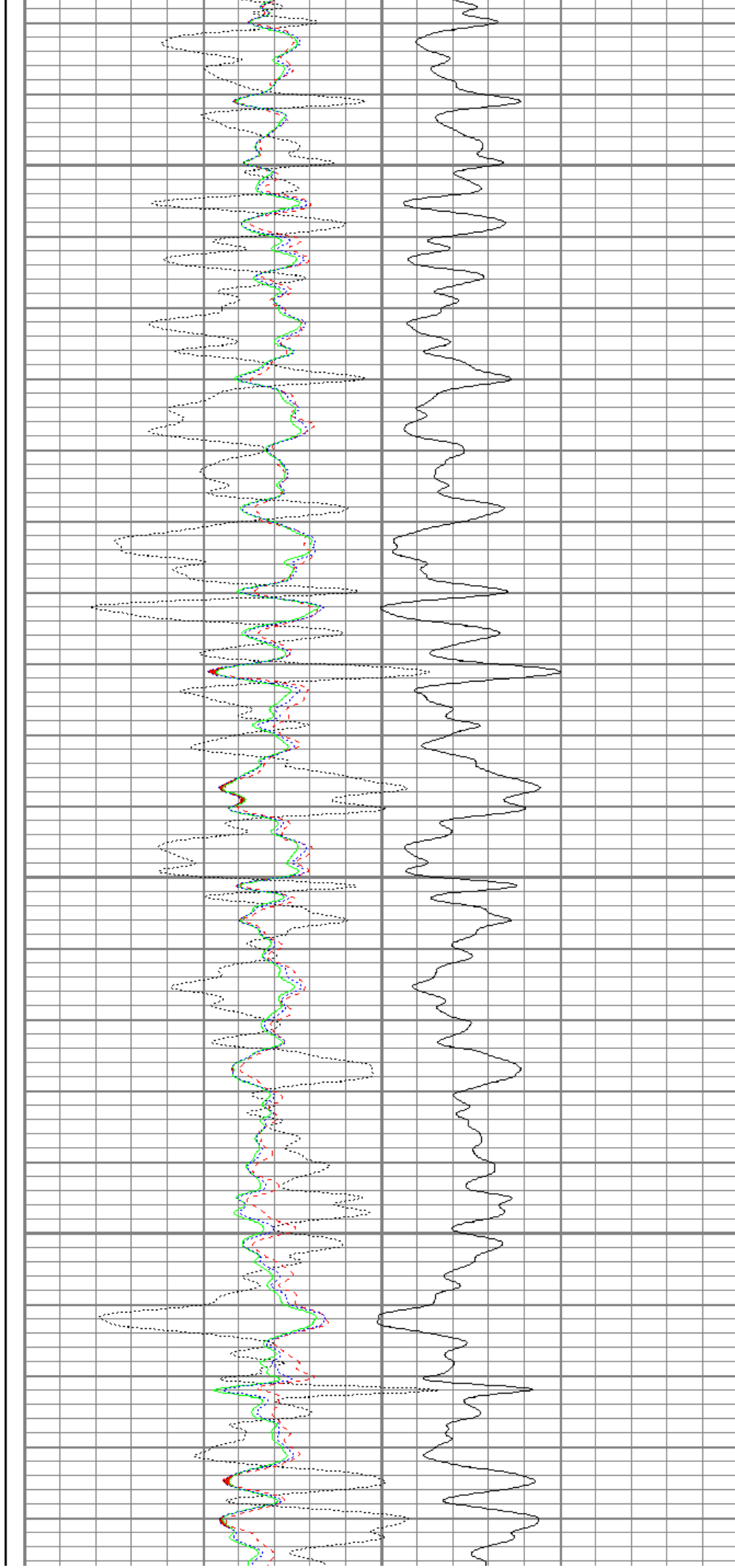


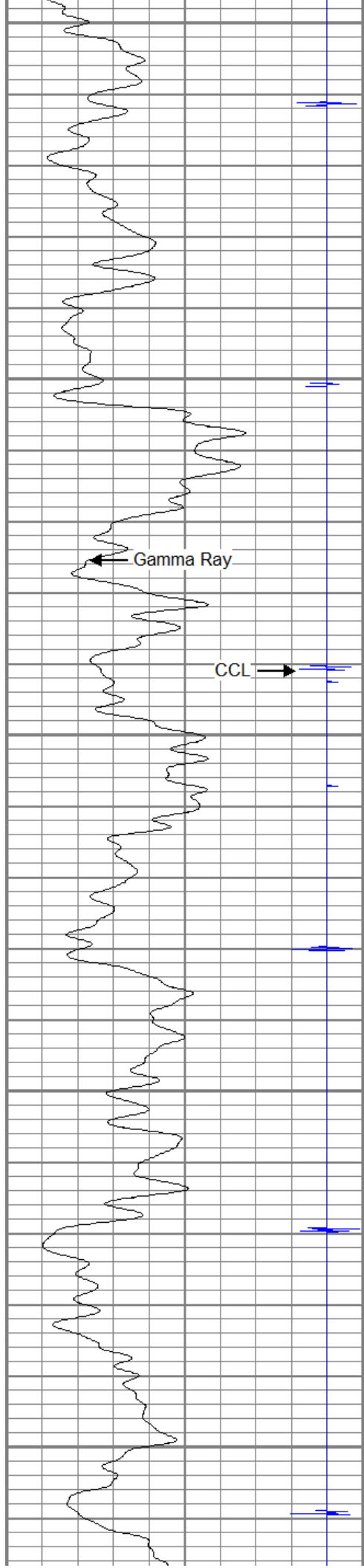
3000

3050

3100

3150





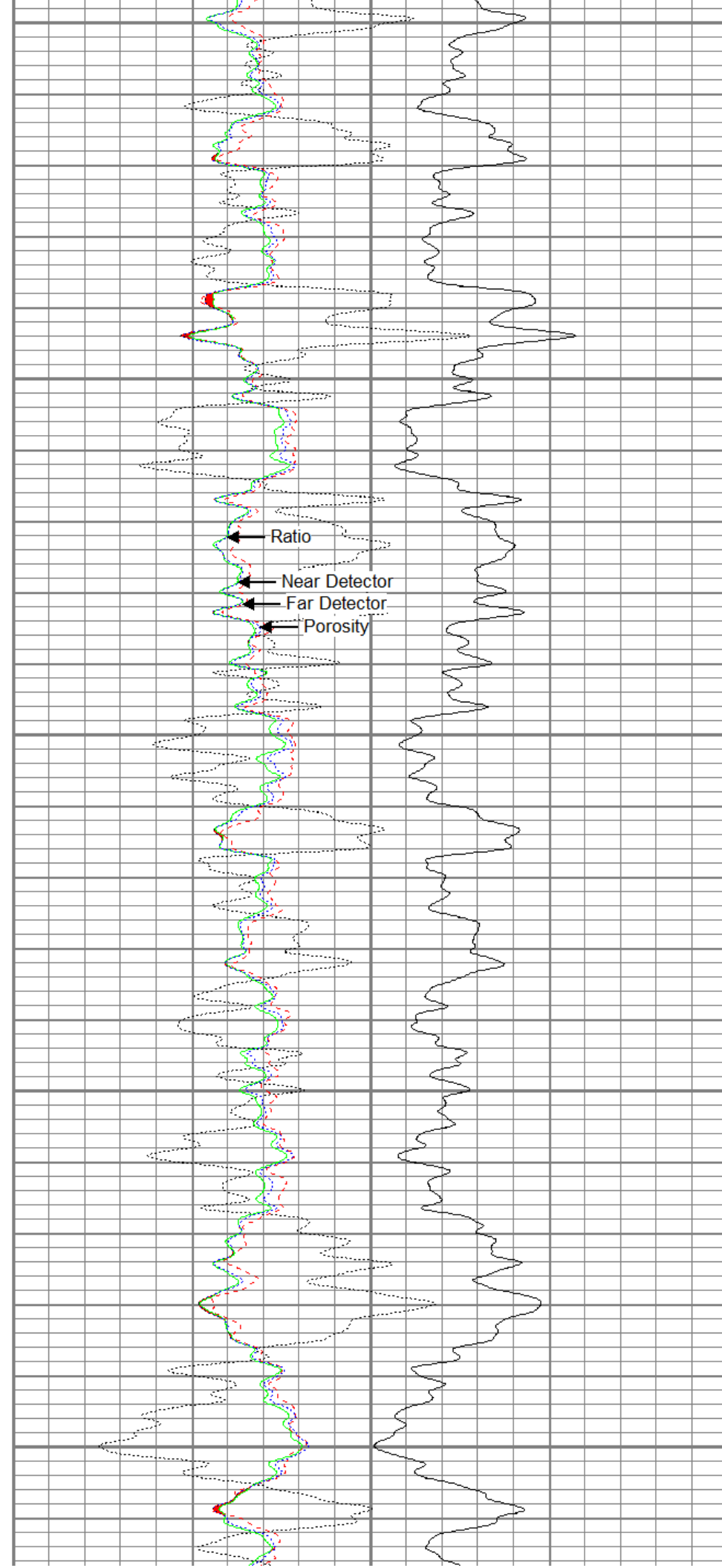
3200

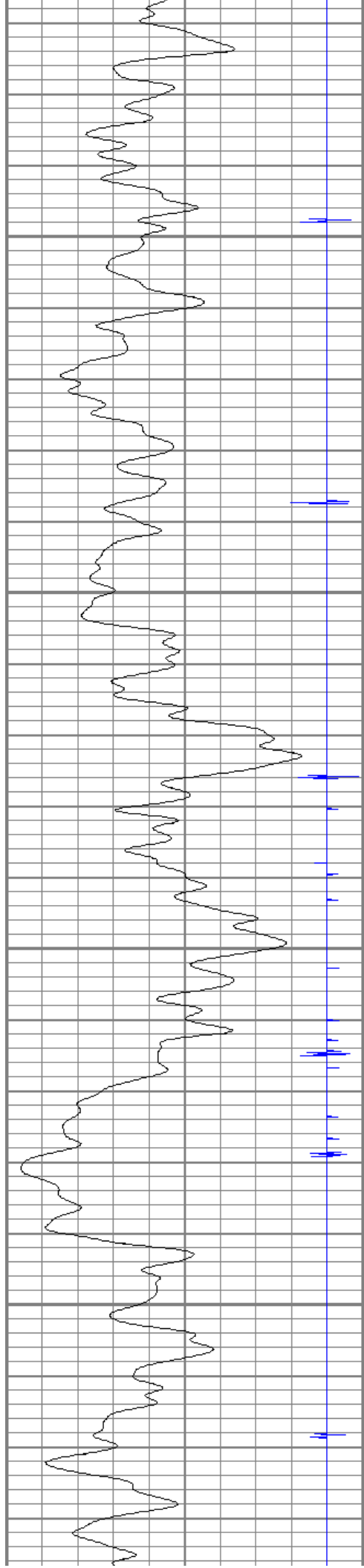
3250

3300

3350

3400



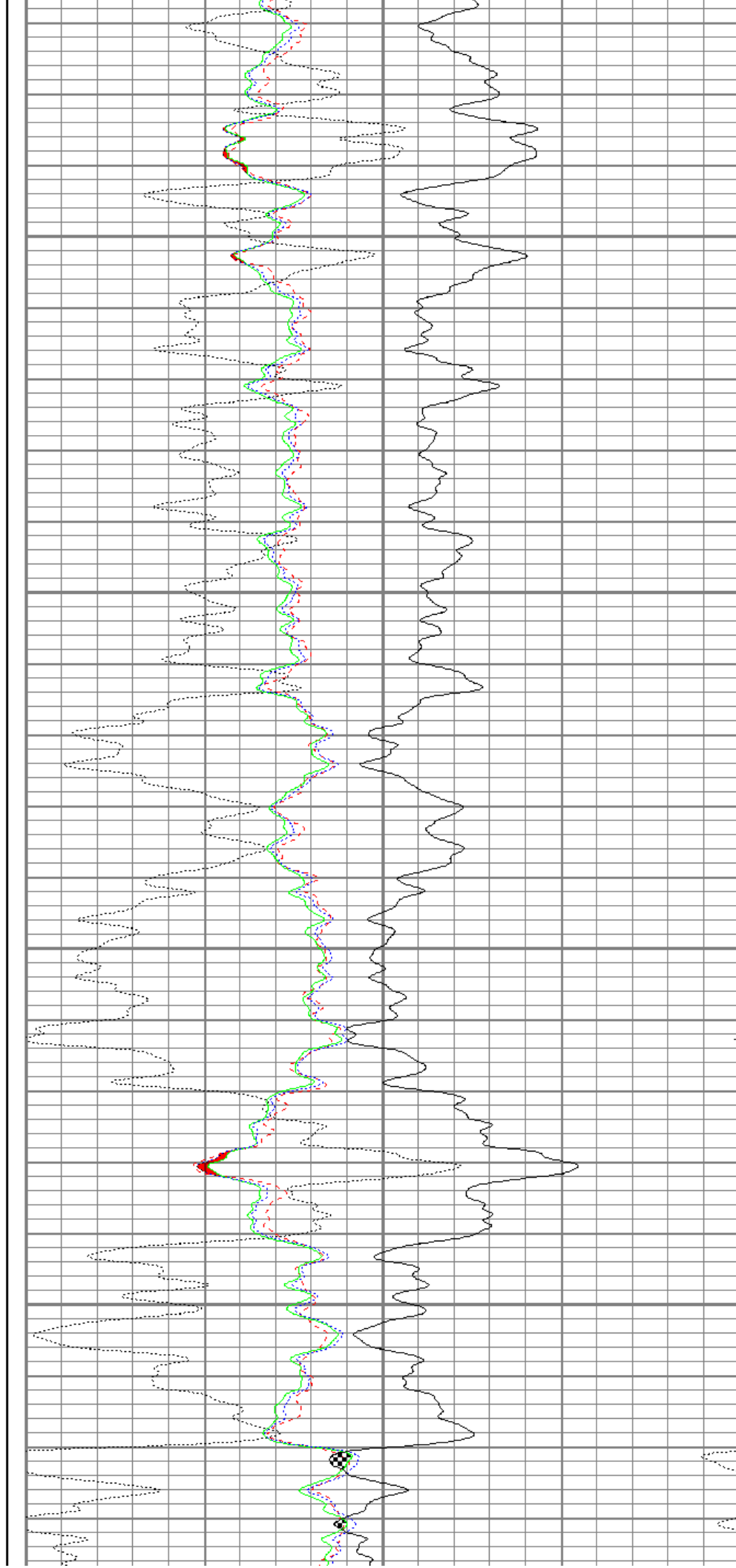


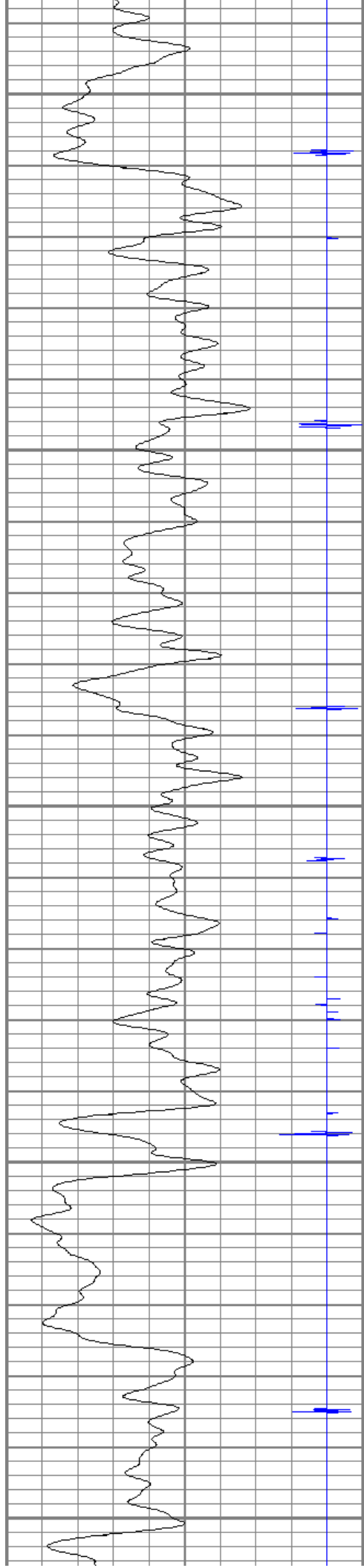
3450

3500

3550

3600





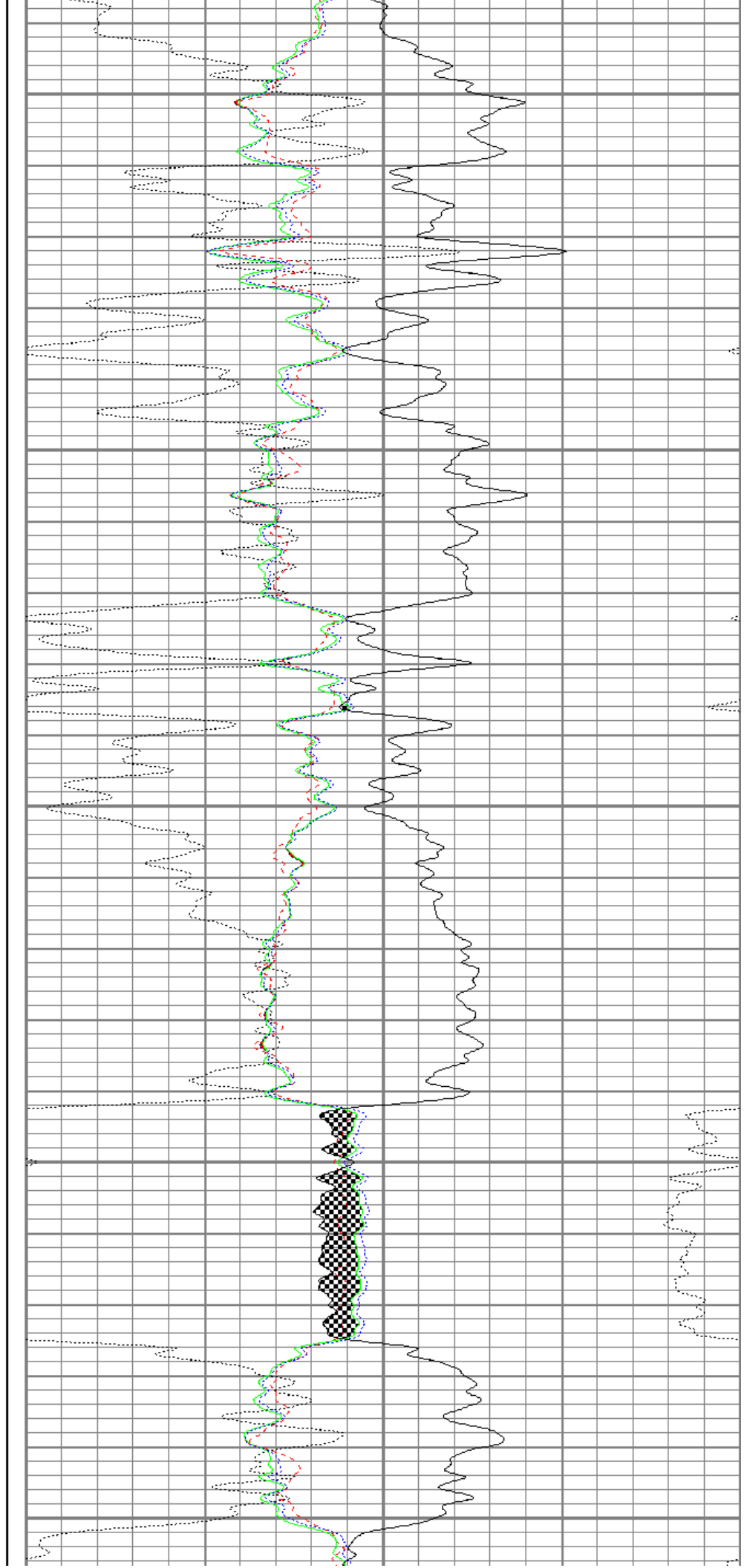
3650

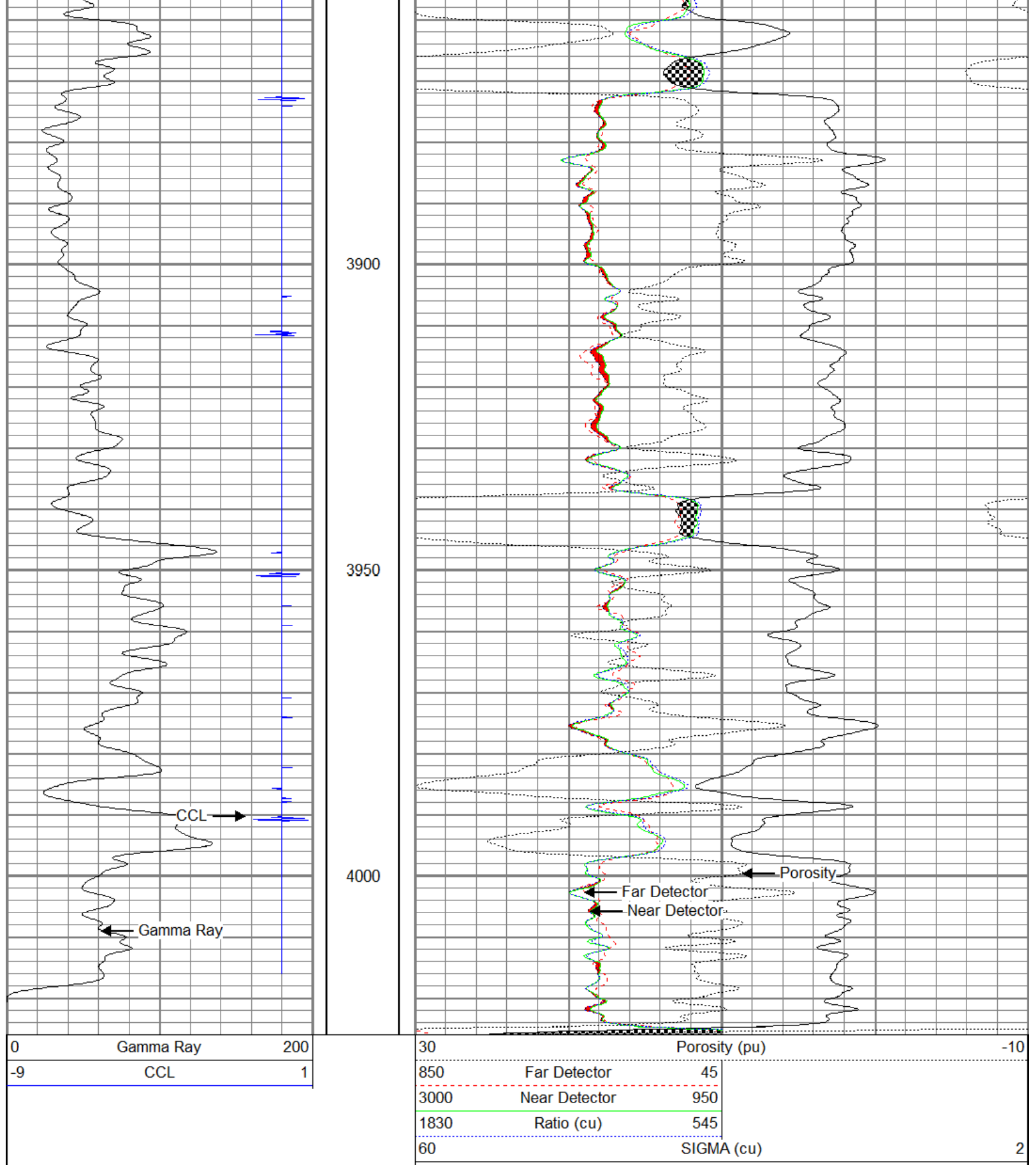
3700

3750

3800

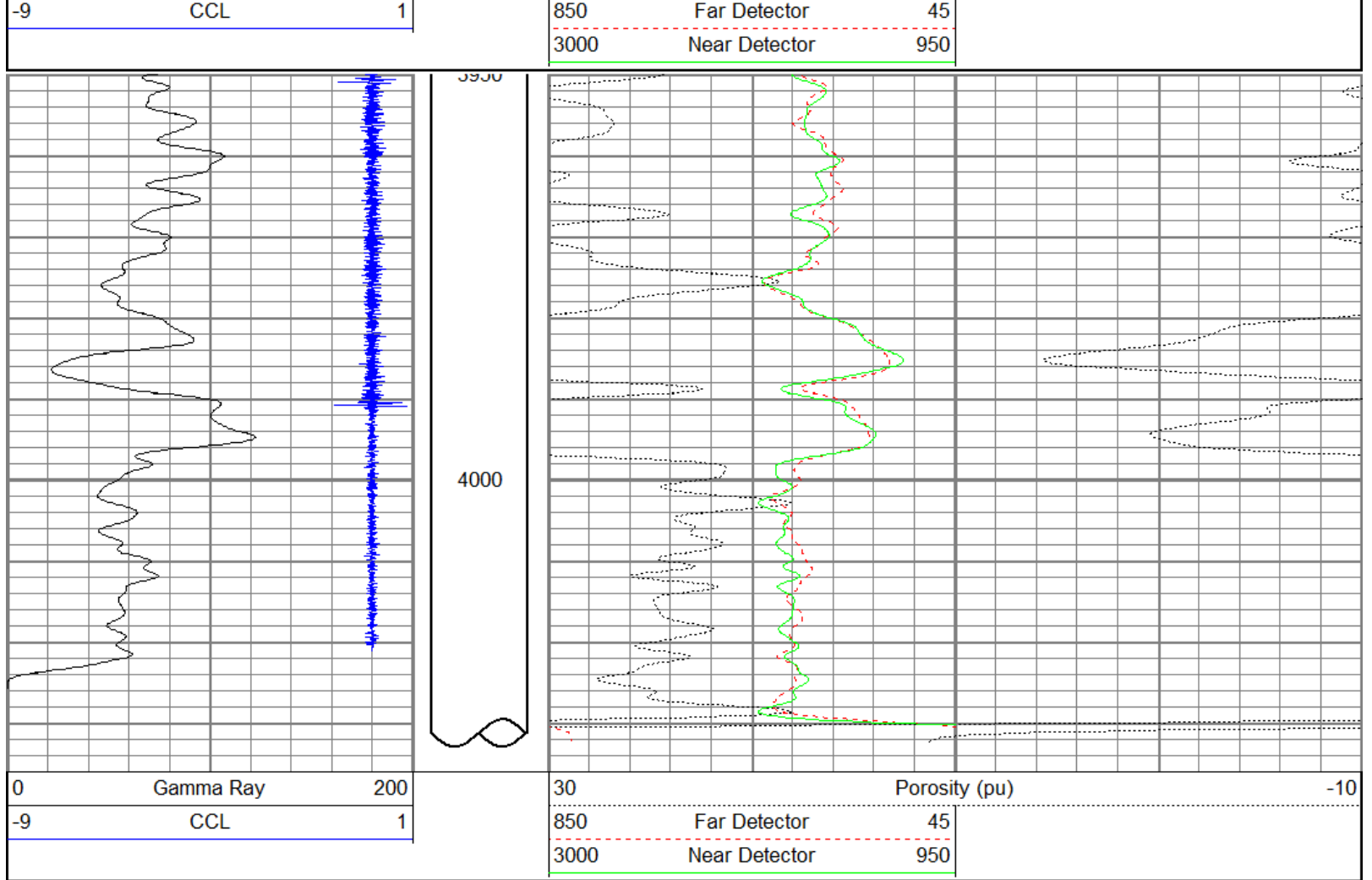
3850





Database File: mcelvainbullseye11gsl.db  
 Dataset Pathname: fruitland/bullseye1/run1/pass4  
 Presentation Format: gslsigma  
 Dataset Creation: Tue May 08 11:07:20 2012 by Log SCH 120126  
 Charted by: Depth in Feet scaled 1:240





### Calibration Report

Database File: mcelvainbullseye11gsl.db  
 Dataset Pathname: fruitland/bullseye1/run1/pass4  
 Dataset Creation: Tue May 08 11:07:20 2012 by Log SCH 120126

### Gamma Ray Calibration Report

Serial Number:	GSL_N	
Tool Model:	SIE	
Performed:	Wed Jan 04 15:56:27 2012	
Calibrator Value:	1.0	
Background Reading:	0.0	cps
Calibrator Reading:	1.0	cps
Sensitivity:	3.4567	/cps

### Neutron Calibration Report

Serial Number:	GSL_N	
Tool Model:	SIE	
Performed:	Tue May 08 10:44:33 2012	
Calibrator Values:	0	1
Calibrator Readings:	0	1
		cps
Sensitivity:	1.2	/cps