

FEATURE TABLE		
EXISTING FEATURE	DIRECTION	LENGTH
PROPERTY LINE	SOUTH	288'

LEGEND:

└─┘ = 90° SYMBOL

● = PROPOSED WELL HEAD.

▲ = SECTION CORNERS LOCATED.

NAD 83 (TARGET BOTTOM HOLE)	NAD 83 (SURFACE LOCATION)
LATITUDE = 40°44'31.17" (40.741992)	LATITUDE = 40°43'48.09" (40.730025)
LONGITUDE = 103°54'08.74" (103.902428)	LONGITUDE = 103°53'55.30" (103.898694)

PDOP = 1.2

NOBLE ENERGY, INC.

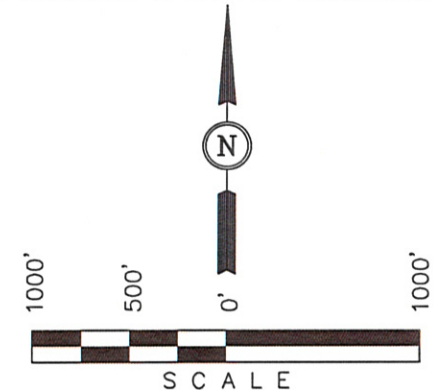
Well location, TIMBRO LD19-73HN, located as shown in the SE 1/4 SE 1/4 of Section 19, T9N, R58W, 6th P.M., Weld County, Colorado.

BASIS OF ELEVATION

SPOT ELEVATION LOCATED AT THE NORTHEAST CORNER OF SECTION 15, T9N, R58W, 6th P.M. TAKEN FROM THE GATEHOOK SPRING, QUADRANGLE, COLORADO, WELD COUNTY, 7.5 MINUTE QUAD (TOPOGRAPHIC MAP) PUBLISHED BY THE UNITED STATES DEPARTMENT OF THE INTERIOR, GEOLOGICAL SURVEY. SAID ELEVATION IS MARKED AS BEING 4679 FEET.

BASIS OF BEARINGS

BASIS OF BEARINGS IS A G.P.S. OBSERVATION.



CERTIFICATE

THIS IS TO CERTIFY THAT THE ABOVE PLAT WAS PREPARED FROM FIELD NOTES OF ACTUAL SURVEYS MADE BY ME OR UNDER MY SUPERVISION AND THAT THE SAME ARE TRUE AND CORRECT TO THE BEST OF MY KNOWLEDGE AND BELIEF.

REGISTERED LAND SURVEYOR
 REGISTRATION NO. 17492
 STATE OF COLORADO

REVISED: 08-31-12 S.R.L.

UINTAH ENGINEERING & LAND SURVEYING
 85 SOUTH 200 EAST - VERNAL, UTAH 84078
 (435) 789-1017

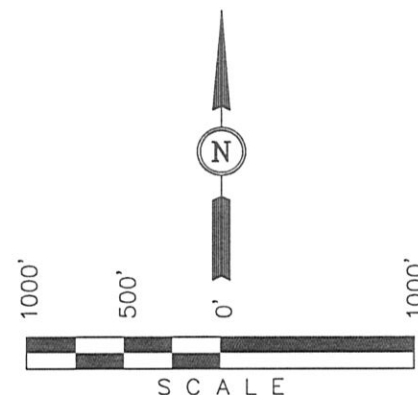
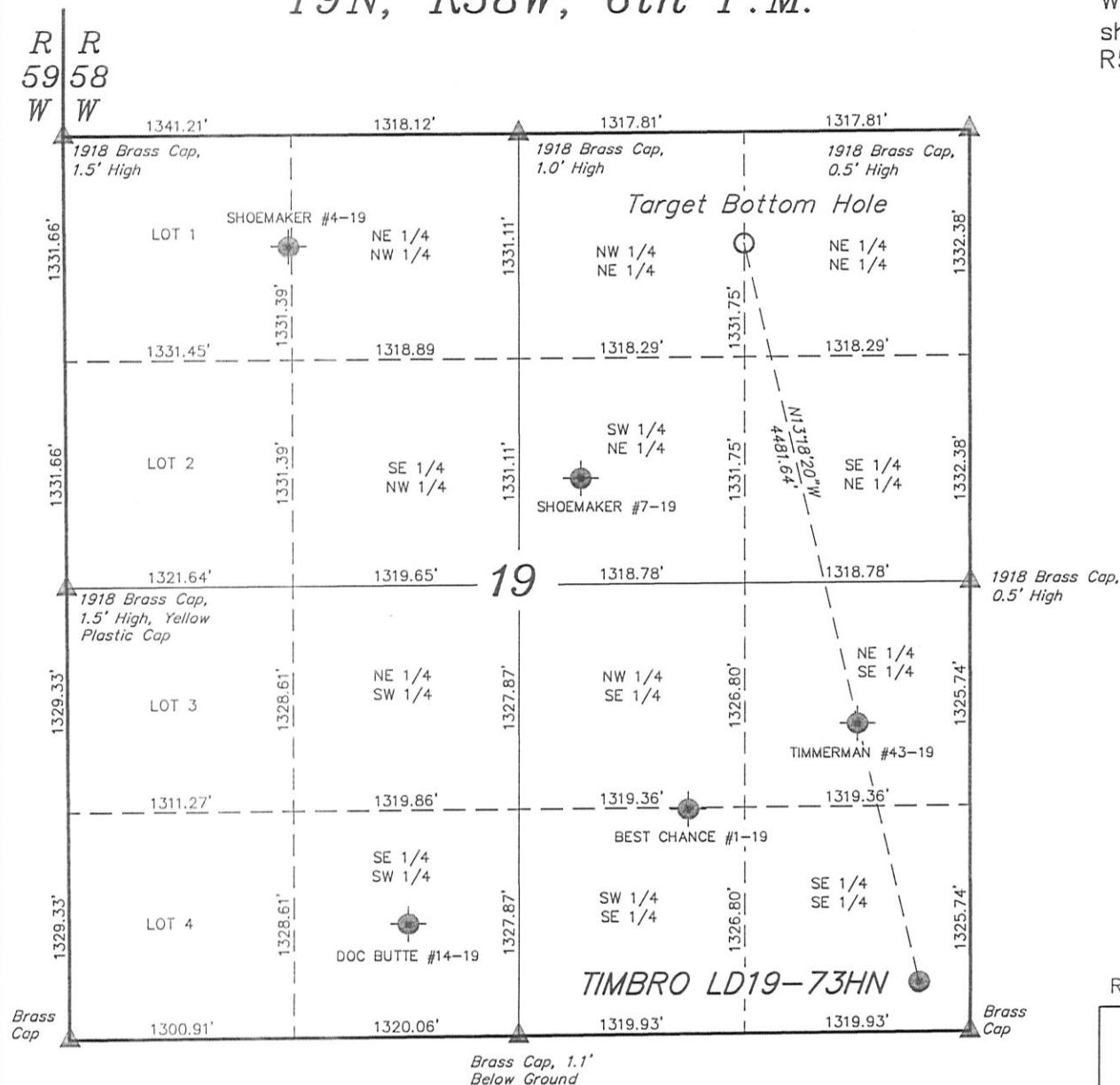
SCALE 1" = 1000'	DATE SURVEYED: 3-23-12	DATE DRAWN: 04-04-12
PARTY DARREN SHANKS K.H. B.L.B.	REFERENCES G.L.O. PLAT	
WEATHER WARM	FILE NOBLE ENERGY, INC.	

SITE SKETCH

T9N, R58W, 6th P.M.

NOBLE ENERGY, INC.

Well location, TIMBRO LD19-73HN, located as shown in the SE 1/4 SE 1/4 of Section 19, T9N, R58W, 6th P.M., Weld County, Colorado.



LEGEND:

- ▲ = SECTION CORNERS LOCATED.
- = ABANDONED WELLS
- = SURFACE LOCATION
- = BOTTOM HOLE

REV: 08-30-12 S.R.L.

	WELL NAME	QTR-QTR	FOOTAGES	LATITUDE	LONGITUDE	ELEVATION	PDOP
1	TIMMERMAN #43-19	NE 1/4 SE 1/4	FROM COGCC DATA BASE	40.734315°	103.899657°	4861'	N/A
2	SHOEMAKER #4-19	Lot 1	FROM COGCC DATA BASE	40.741985°	103.911967°	4868'	N/A
3	DOC BUTTE #14-19	SE 1/4 SW 1/4	FROM COGCC DATA BASE	40.731055°	103.909397°	4831'	N/A
4	SHOEMAKER #7-19	SW 1/4 NE 1/4	FROM COGCC DATA BASE	40.738255°	103.905747°	4866'	N/A
5	BEST CHANCE #1-19	SW 1/4 SE 1/4	FROM COGCC DATA BASE	40.732915°	103.903437°	4838'	N/A

UINTAH ENGINEERING & LAND SURVEYING
85 SOUTH 200 EAST - VERNAL, UTAH 84078
(435) 789-1017

SCALE 1" = 1000'	DATE SURVEYED: 3-23-12	DATE DRAWN: 04-04-12
PARTY DARREN SHANKS K.H. B.L.B.	REFERENCES G.L.O. PLAT	
WEATHER WARM	FILE NOBLE ENERGY, INC.	