

NOBLE ENERGY, INC.
TIMBRO FEDERAL LD29-78HN & TIMBRO LD19-73HN
LOCATED IN WELD COUNTY, COLORADO
SECTION 19, T9N, R58W, 6th P.M.

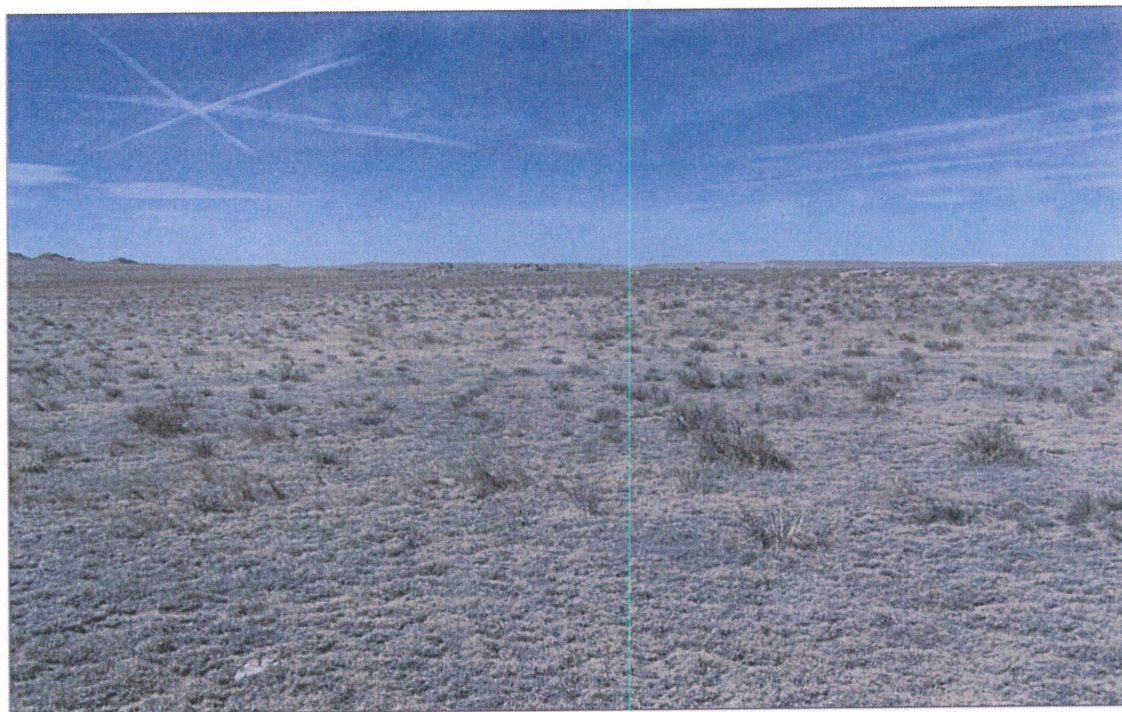


PHOTO: VIEW OF REFERENCE AREA

CAMERA ANGLE: WESTERLY



- Since 1964 -

UELS

Uintah Engineering & Land Surveying

85 South 200 East Vernal, Utah 84078
(435) 789-1017 * FAX (435) 789-1813

REFERENCE AREA
PHOTO

04 **13** **12**
MONTH DAY YEAR

TAKEN BY: D.S. DRAWN BY: B.D.H. REV: 08-30-12 J.L.H.

PHOTO
REF