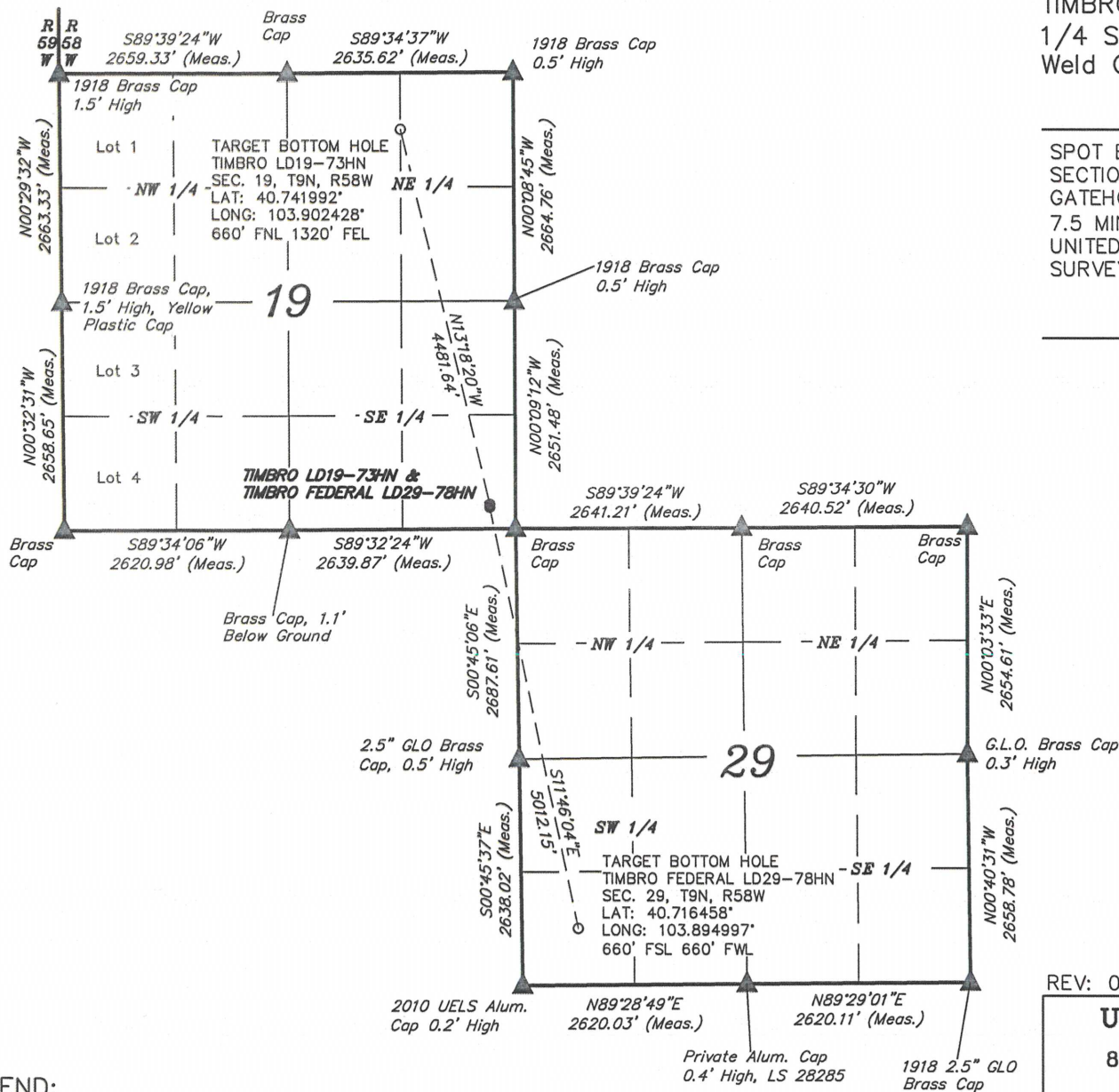


MULTI-WELL PLAN T9N, R58W, 6th P.M.



LEGEND:

- = BOTTOM HOLE
- └ = 90° SYMBOL
- = PROPOSED WELL HEAD.
- ▲ = SECTION CORNERS LOCATED.

NOBLE ENERGY, INC.

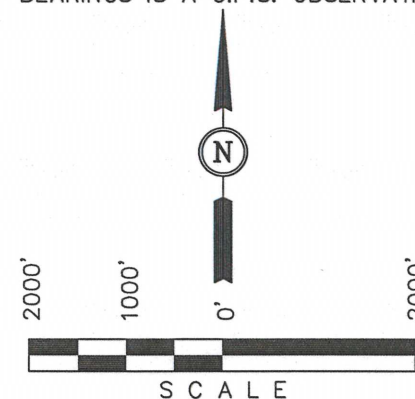
Well location, TIMBRO FEDERAL LD29-78HN & TIMBRO LD19-73HN, located as shown in the SE 1/4 SE 1/4 of Section 19, T9N, R58W, 6th P.M., Weld County, Colorado.

BASIS OF ELEVATION

SPOT ELEVATION LOCATED AT THE NORTHEAST CORNER OF SECTION 15, T9N, R58W, 6th P.M. TAKEN FROM THE GATEHOOK SPRING, QUADRANGLE, COLORADO, WELD COUNTY, 7.5 MINUTE QUAD (TOPOGRAPHIC MAP) PUBLISHED BY THE UNITED STATES DEPARTMENT OF THE INTERIOR, GEOLOGICAL SURVEY. SAID ELEVATION IS MARKED AS BEING 4679 FEET.

BASIS OF BEARINGS

BASIS OF BEARINGS IS A G.P.S. OBSERVATION.



REV: 08-30-12 S.R.L.

UINTAH ENGINEERING & LAND SURVEYING
85 SOUTH 200 EAST - VERNAL, UTAH 84078
(435) 789-1017

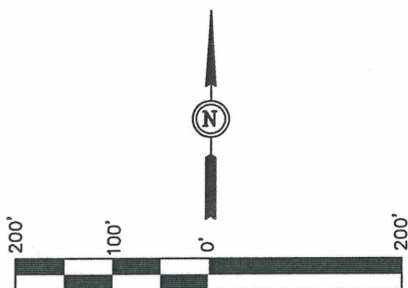
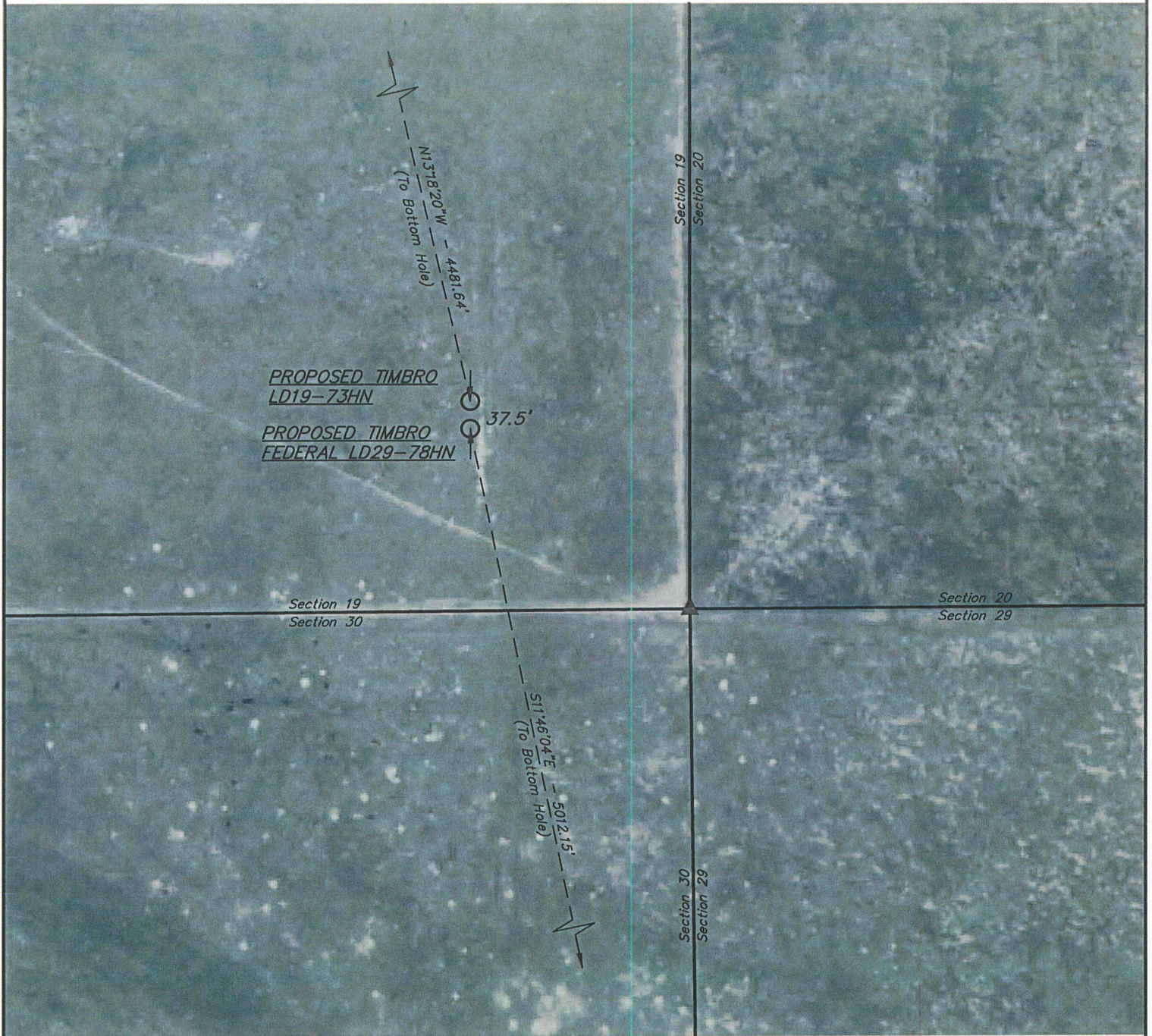
SCALE 1" = 2000'	DATE SURVEYED: 3-23-12	DATE DRAWN: 04-04-12
PARTY DARREN SHANKS K.H. B.L.B.	REFERENCES G.L.O. PLAT	
WEATHER WARM	FILE NOBLE ENERGY, INC.	

NOBLE ENERGY, INC.

MULTI-WELL PLAN

TIMBRO FEDERAL LD29-78HN & TIMBRO LD19-73HN
SECTION 19, T9N, R58W, 6th P.M.

DATE: 08-31-12
DRAWN BY: S.R.L.
REVISED: 09-04-12



PAD DETAILS:
WELL HEAD SPACING = 37.5'