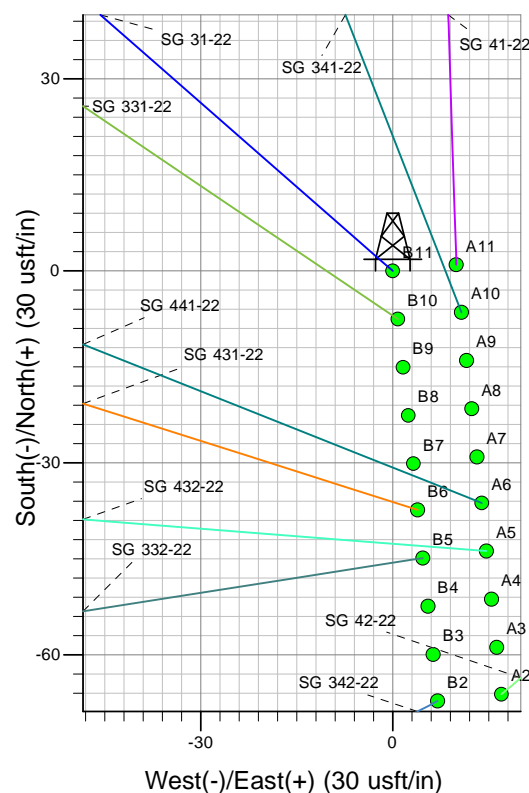
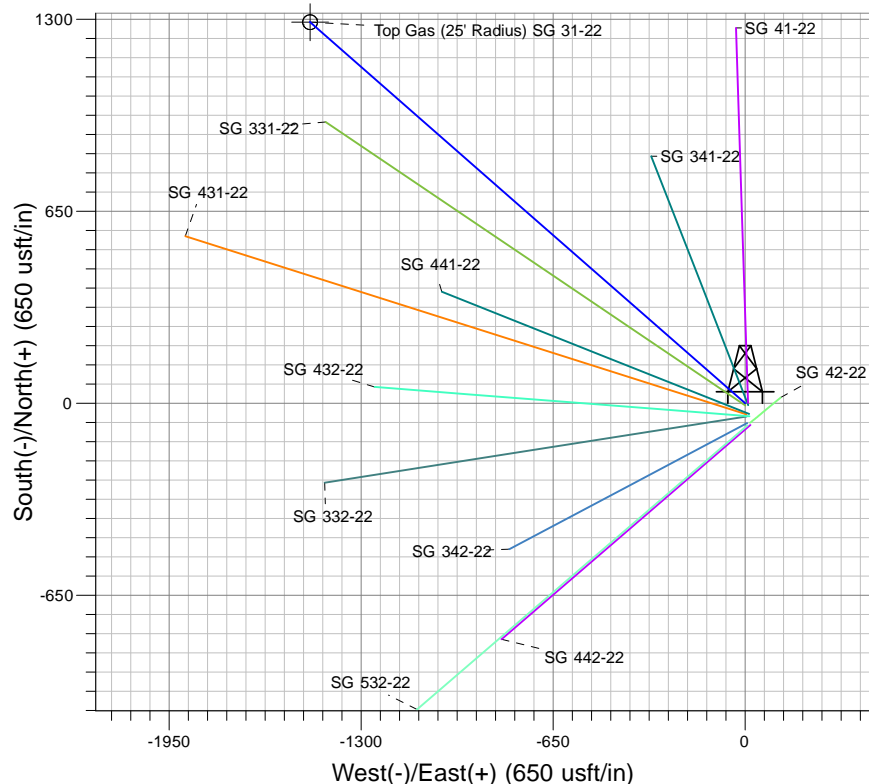
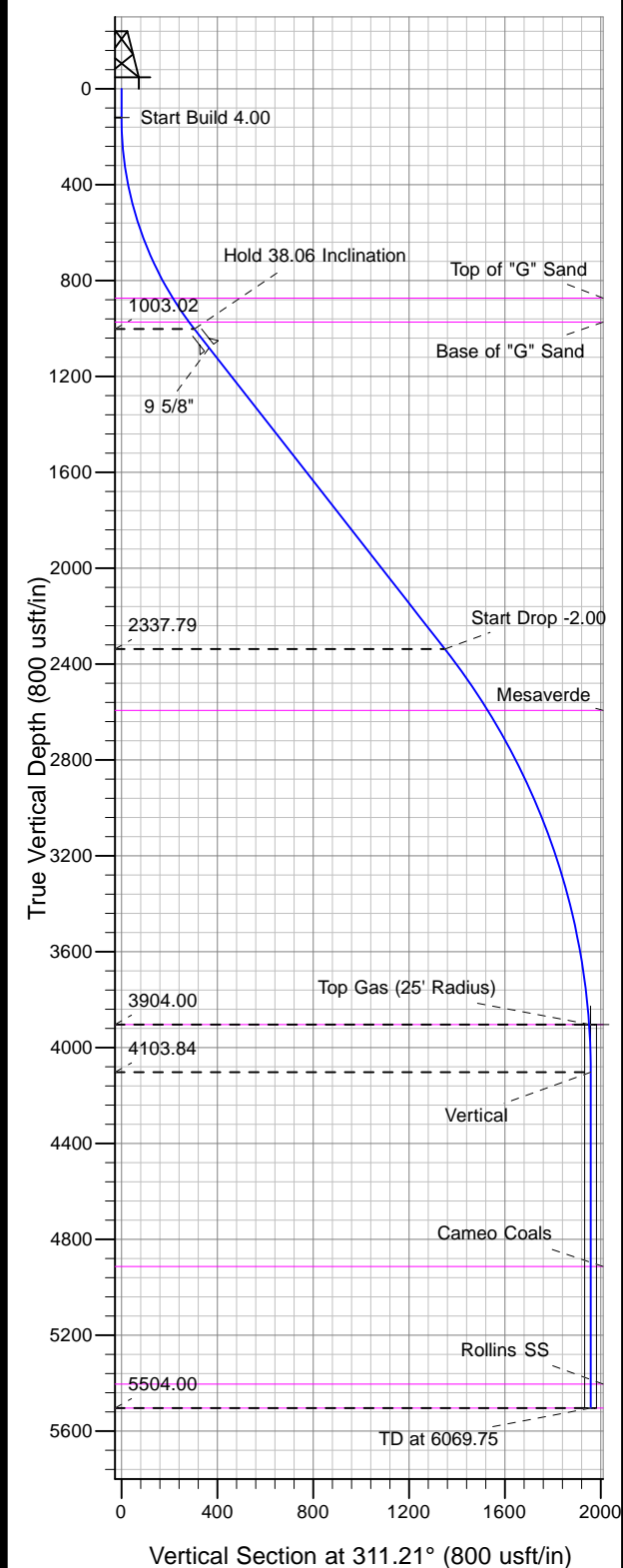




Well Name: SG 31-22
Surface Location: SG 42-22 Pad
North American Datum 1983 , US State Plane 1983 , Colorado Central Zone
Ground Elevation: 5218.00

+N/-S	+E/-W	Northing	Easting	Latitude	Longitude	Slot
0.00	0.00	1590568.20	2269037.27	39.42629	-108.08801	B11

KELLY BUSHING @ 5244.00usft (Nabors 573 (26' RKB) kjs)



Project: SG 22-07S-096W
Site: SG 42-22 Pad
Well: SG 31-22
Design #2 02Jul12 kjs

Azimuths to True North
Magnetic North: 10.25°
Magnetic Field
Strength: 52161.1snT
Dip Angle: 65.66°
Date: 4/5/2012
Model: IGRF2005-10

ANNOTATIONS

MD	Inc	Azi	TVD	+N/-S	+E/-W	VSect	Departure	Annotation
120.00	0.00	0.00	120.00	0.00	0.00	0.00	0.00	Start Build 4.00
1071.46	38.06	311.21	1003.02	200.66	-229.11	304.55	304.55	Hold 38.06 Inclination
2766.66	38.06	311.21	2337.79	889.19	-1015.25	1349.59	1349.59	Start Drop -2.00
4469.59	4.00	311.21	3904.00	1285.90	-1468.21	1951.72	1951.72	Top Gas
4669.59	0.00	0.00	4103.84	1290.50	-1473.46	1958.70	1958.70	Vertical
6069.75	0.00	0.00	5504.00	1290.50	-1473.46	1958.70	1958.70	TD at 6069.75