



+N/-S
0.00

+E/-W
0.00

Northing
1590523.21

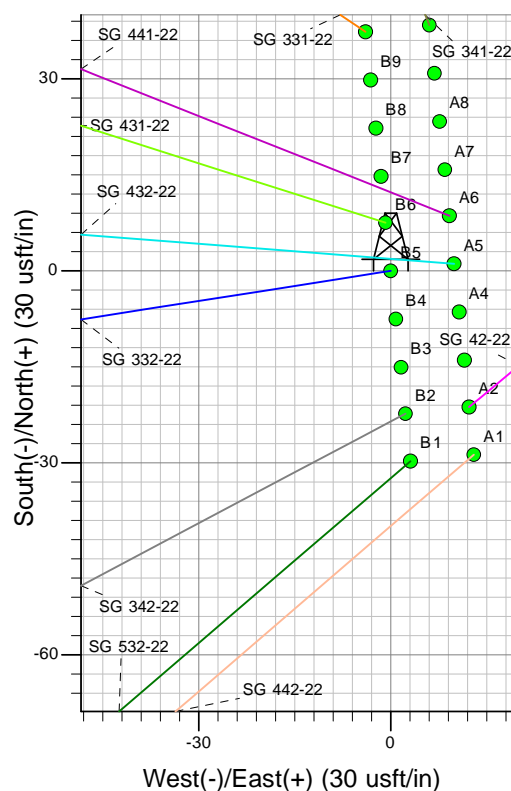
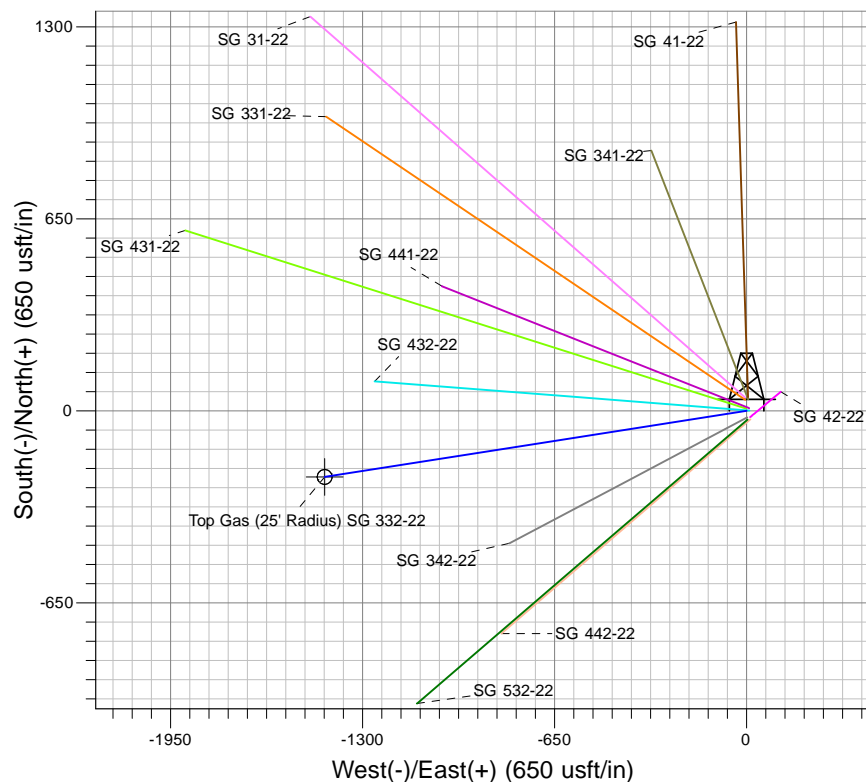
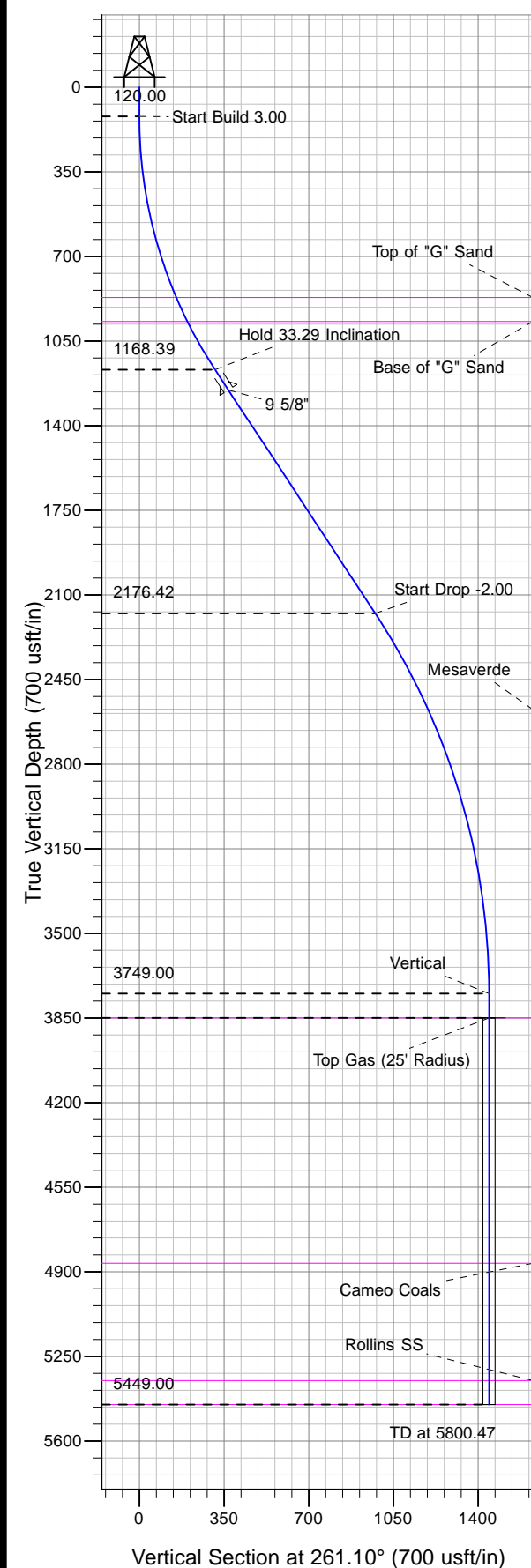
Easting
2269040.72

Latitude
39.42617

Longitude
-108.08800

Slot
B5

Well Name: SG 332-22
Surface Location: SG 42-22 Pad
North American Datum 1983 , US State Plane 1983 , Colorado Central Zone
Ground Elevation: 5218.00
KELLY BUSHING @ 5244.00usft (Nabors 573 (26' RKB) kjs)



Project: SG 22-07S-096W
Site: SG 42-22 Pad
Well: SG 332-22
Design #2 02Jul12 kjs

Azimuths to True North
Magnetic North: 10.25°
Magnetic Field
Strength: 52161.0snT
Dip Angle: 65.66°
Date: 4/5/2012
Model: IGRF2005-10

ANNOTATIONS

MD	Inc	Azi	TVD	+N/-S	+E/-W	VSec	Departure	Annotation
120.00	0.00	0.00	120.00	0.00	0.00	0.00	0.00	Start Build 3.00
1229.80	33.29	261.10	1168.39	-48.51	-309.70	313.47	313.47	Hold 33.29 Inclination
2435.77	33.29	261.10	2176.42	-150.96	-963.72	975.47	975.47	Start Drop -2.00
4100.47	0.00	0.00	3749.00	-223.73	-1428.27	1445.68	1445.68	Vertical
4200.47	0.00	0.00	3849.00	-223.73	-1428.27	1445.68	1445.68	Top Gas
5800.47	0.00	0.00	5449.00	-223.73	-1428.27	1445.68	1445.68	TD at 5800.47