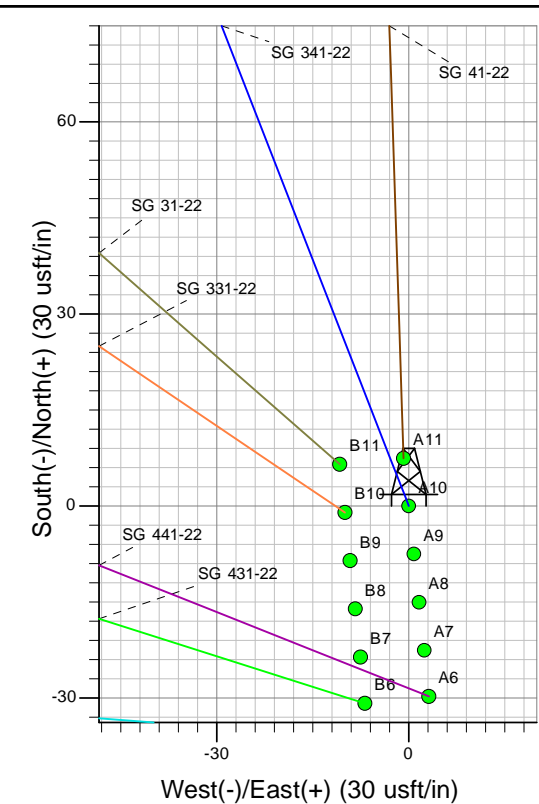
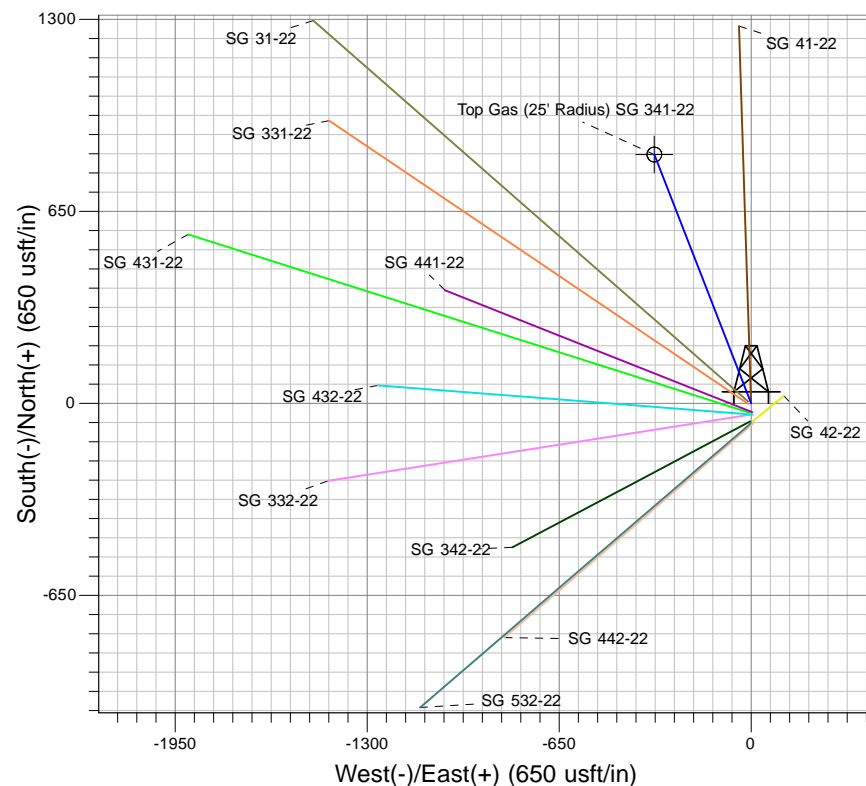
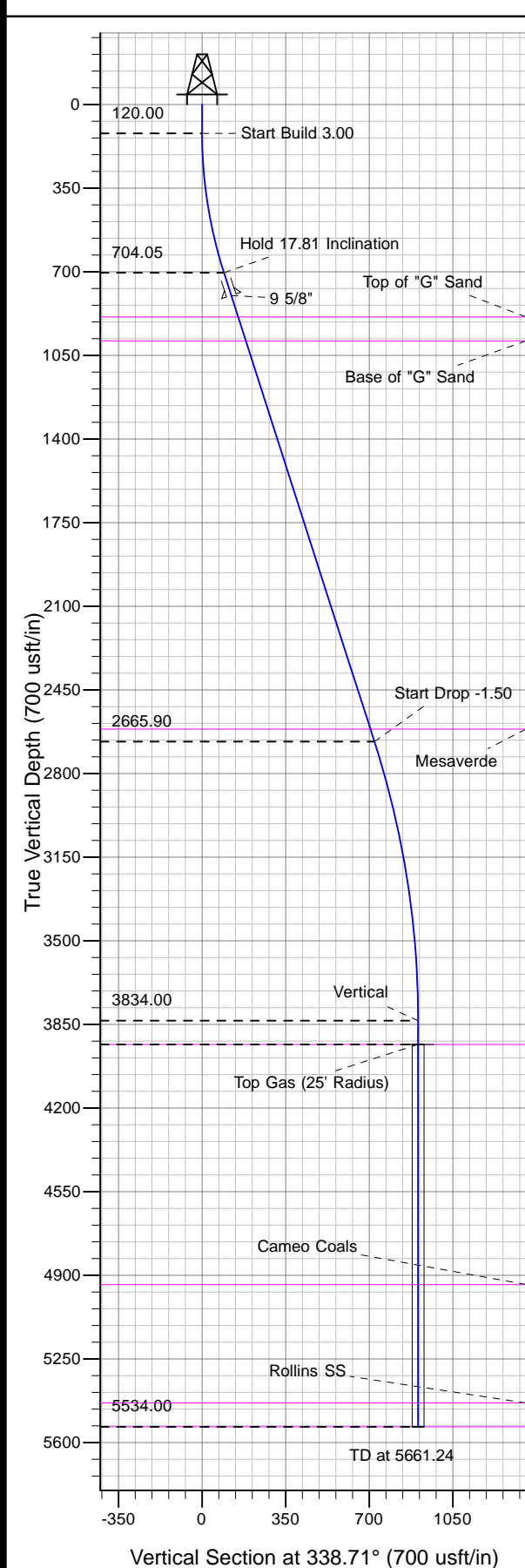




Well Name: SG 341-22
Surface Location: SG 42-22 Pad
North American Datum 1983 , US State Plane 1983 , Colorado Central Zone
Ground Elevation: 5218.00

+N/-S	+E/-W	Northing	Easting	Latitude	Longitude	Slot
0.00	0.00	1590561.41	2269047.83	39.42627	-108.08797	A10

KELLY BUSHING @ 5244.00usft (Nabors 573 (26' RKB) kjs)



Project: SG 22-07S-096W
Site: SG 42-22 Pad
Well: SG 341-22
Design #2 02Jul12 kjs

Compass Rose:
T: True North
M: Magnetic North
Azimuths to True North: 10.25°
Magnetic Field
Strength: 52161.1snT
Dip Angle: 65.66°
Date: 4/5/2012
Model: IGRF2005-10

ANNOTATIONS									
MD	Inc	Azi	TVD	+N/-S	+E/-W	VSect	Departure	Annotation	
120.00	0.00	0.00	120.00	0.00	0.00	0.00	0.00	Start Build 3.00	
713.56	17.81	338.71	704.05	85.25	-33.21	91.49	91.49	Hold 17.81 Inclination	
2774.13	17.81	338.71	2665.90	672.40	-261.97	721.63	721.63	Start Drop -1.50	
3961.24	0.00	0.00	3834.00	842.91	-328.40	904.62	904.62	Vertical	
4061.24	0.00	0.00	3934.00	842.91	-328.40	904.62	904.62	Top Gas	
5661.24	0.00	0.00	5534.00	842.91	-328.40	904.62	904.62	TD at 5661.24	