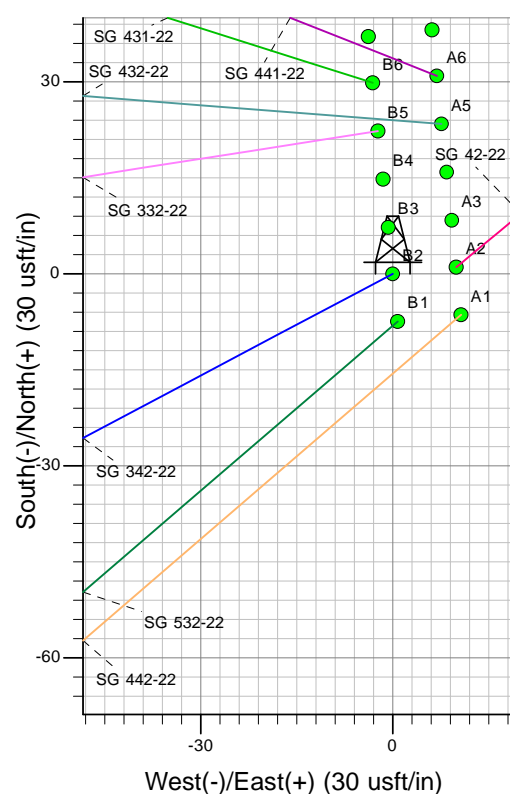
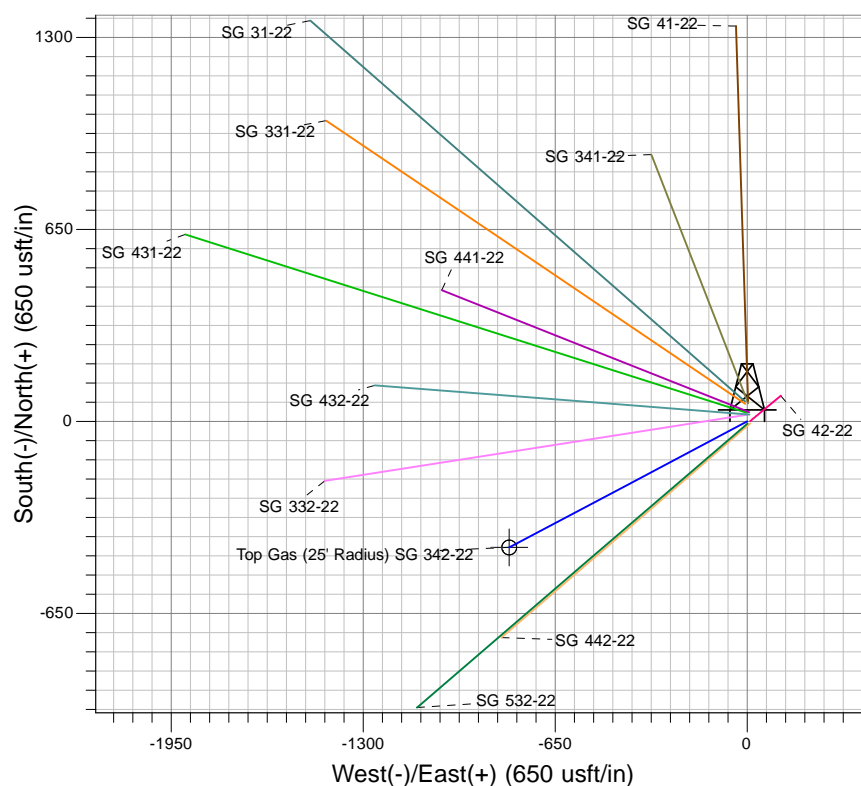
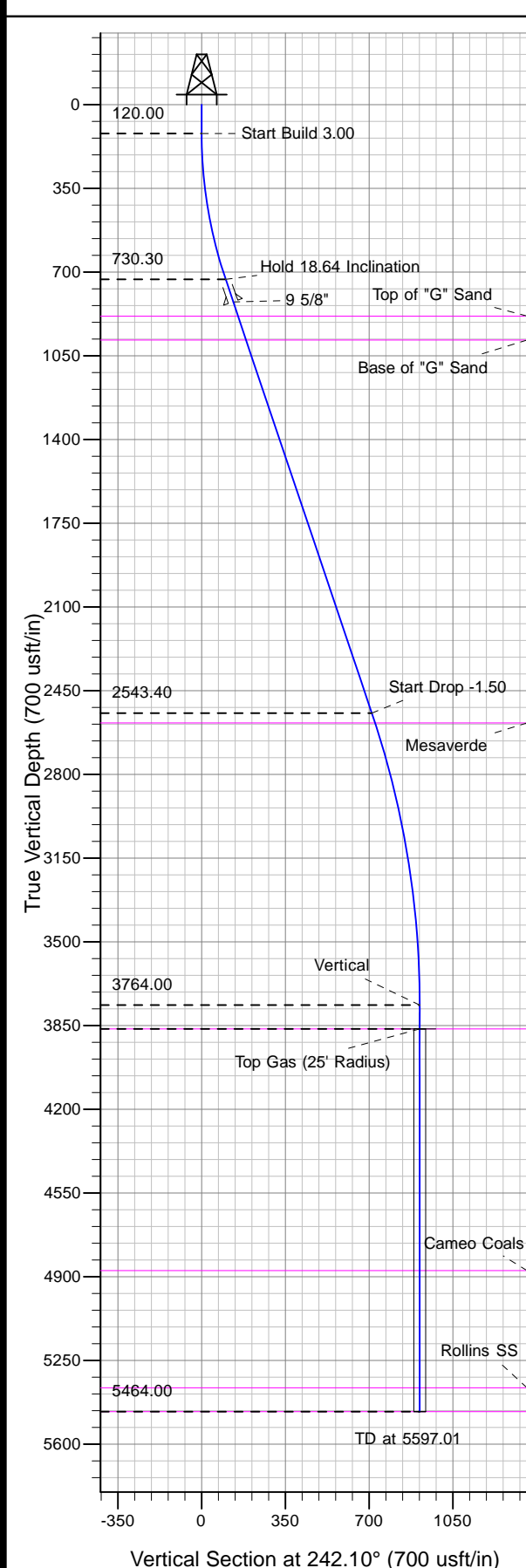




Well Name: SG 342-22  
Surface Location: SG 42-22 Pad  
North American Datum 1983 , US State Plane 1983 , Colorado Central Zone  
Ground Elevation: 5218.00

+N/-S	+E/-W	Northing	Easting	Latitude	Longitude	Slot
0.00	0.00	1590500.84	2269042.38	39.42610	-108.08799	B2

KELLY BUSHING @ 5244.00usft (Nabors 573 (26' RKB) kjs)



Project: SG 22-07S-096W  
Site: SG 42-22 Pad  
Well: SG 342-22  
Design #2 02Jul12 kjs

Azimuths to True North  
Magnetic North: 10.25°  
Magnetic Field  
Strength: 52161.0snT  
Dip Angle: 65.66°  
Date: 4/5/2012  
Model: IGRF2005-10

#### ANNOTATIONS

MD	Inc	Azi	TVD	+N/-S	+E/-W	VSect	Departure	Annotation
120.00	0.00	0.00	120.00	0.00	0.00	0.00	0.00	Start Build 3.00
741.19	18.64	242.10	730.30	-46.86	-88.50	100.14	100.14	Hold 18.64 Inclination
2654.62	18.64	242.10	2543.40	-332.98	-628.86	711.57	711.57	Start Drop -1.50
3897.01	0.00	0.00	3764.00	-426.70	-805.85	911.85	911.85	Vertical
3997.01	0.00	0.00	3864.00	-426.70	-805.85	911.85	911.85	Top Gas
5597.01	0.00	0.00	5464.00	-426.70	-805.85	911.85	911.85	TD at 5597.01