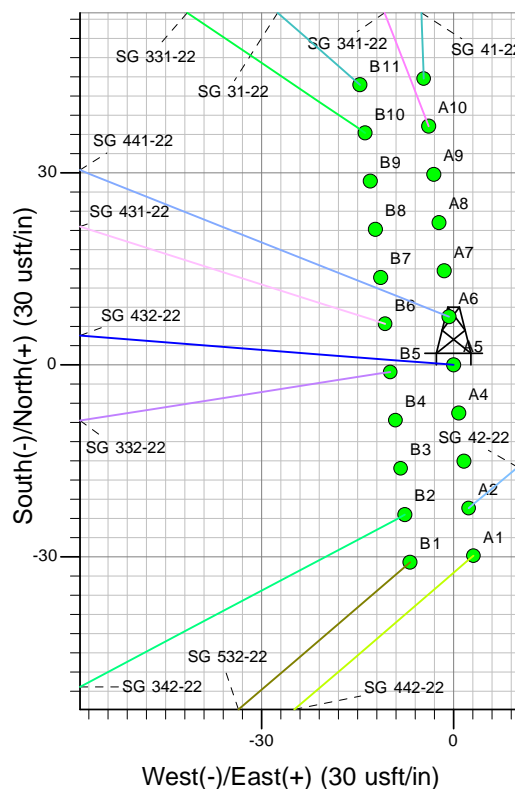
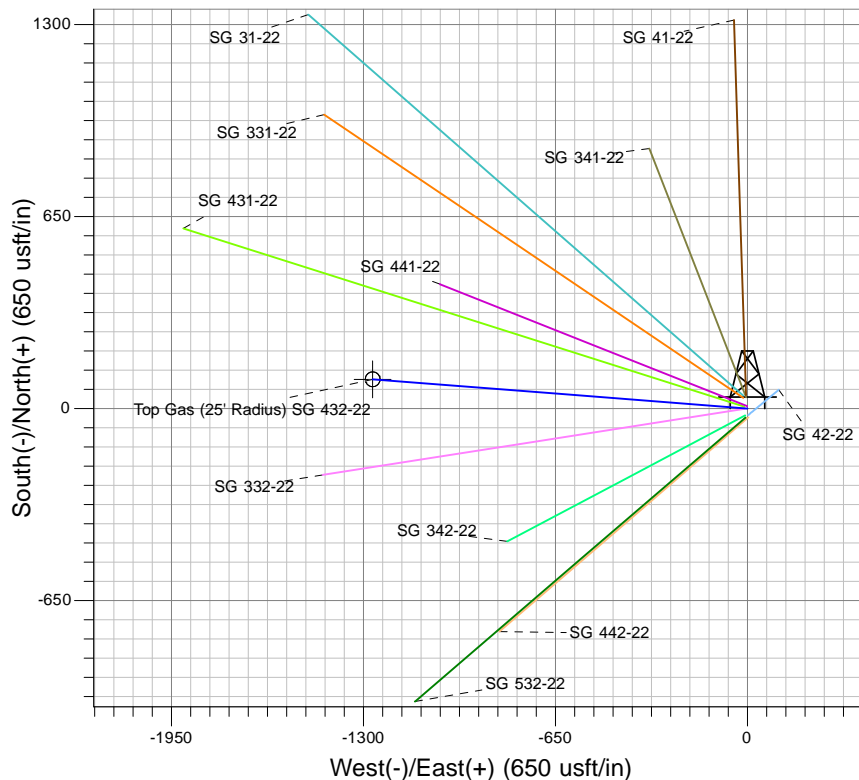
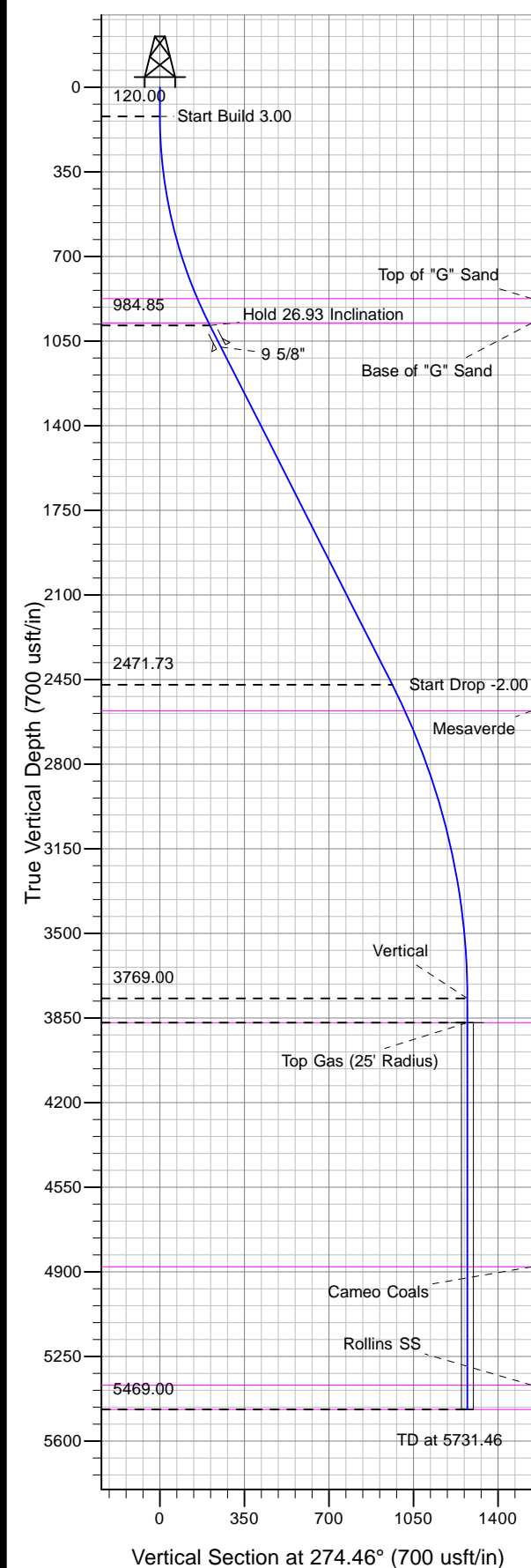




Well Name: SG 432-22
 Surface Location: SG 42-22 Pad
 North American Datum 1983 , US State Plane 1983 , Colorado Central Zone
 Ground Elevation: 5218.00
 +N/-S 0.00 +E/-W 0.00 Northing 1590524.03 Easting 2269050.66 Latitude 39.42617 Longitude -108.08796 Slot A5
 KELLY BUSHING @ 5244.00usft (Nabors 573 (26' RKB) kjs)



Project: SG 22-07S-096W
 Site: SG 42-22 Pad
 Well: SG 432-22
 Design #2 02Jul12 kjs

Azimuths to True North
 Magnetic North: 10.25°
 Magnetic Field
 Strength: 52161.0snT
 Dip Angle: 65.66°
 Date: 4/5/2012
 Model: IGRF2005-10

ANNOTATIONS

MD	Inc	Azi	TVD	+N/-S	+E/-W	VSec	Departure	Annotation
120.00	0.00	0.00	120.00	0.00	0.00	0.00	0.00	Start Build 3.00
1017.52	26.93	274.46	984.85	16.10	-206.41	207.04	207.04	Hold 26.93 Inclination
2685.18	26.93	274.46	2471.73	74.83	-959.30	962.21	962.21	Start Drop -2.00
4031.46	0.00	0.00	3769.00	98.98	-1268.91	1272.77	1272.77	Vertical
4131.46	0.00	0.00	3869.00	98.98	-1268.91	1272.77	1272.77	Top Gas
5731.46	0.00	0.00	5469.00	98.98	-1268.91	1272.77	1272.77	TD at 5731.46