



+N/-S
0.00

+E/-W
0.00

Northing
1590531.56

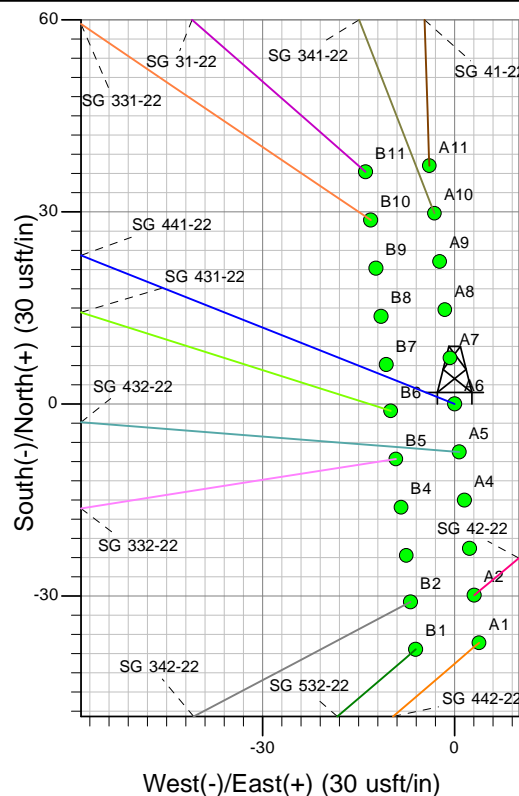
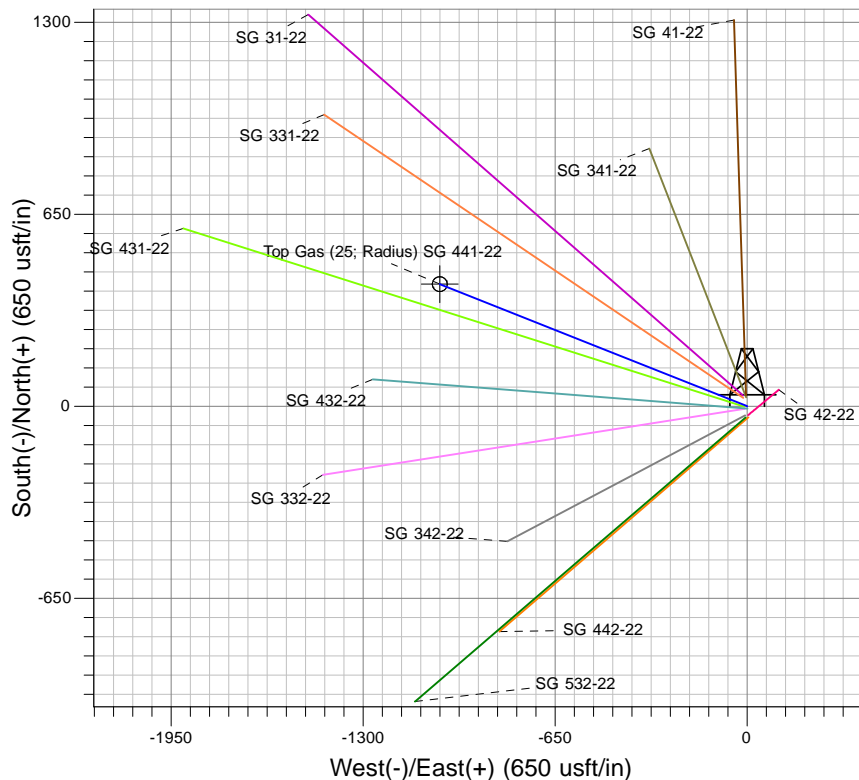
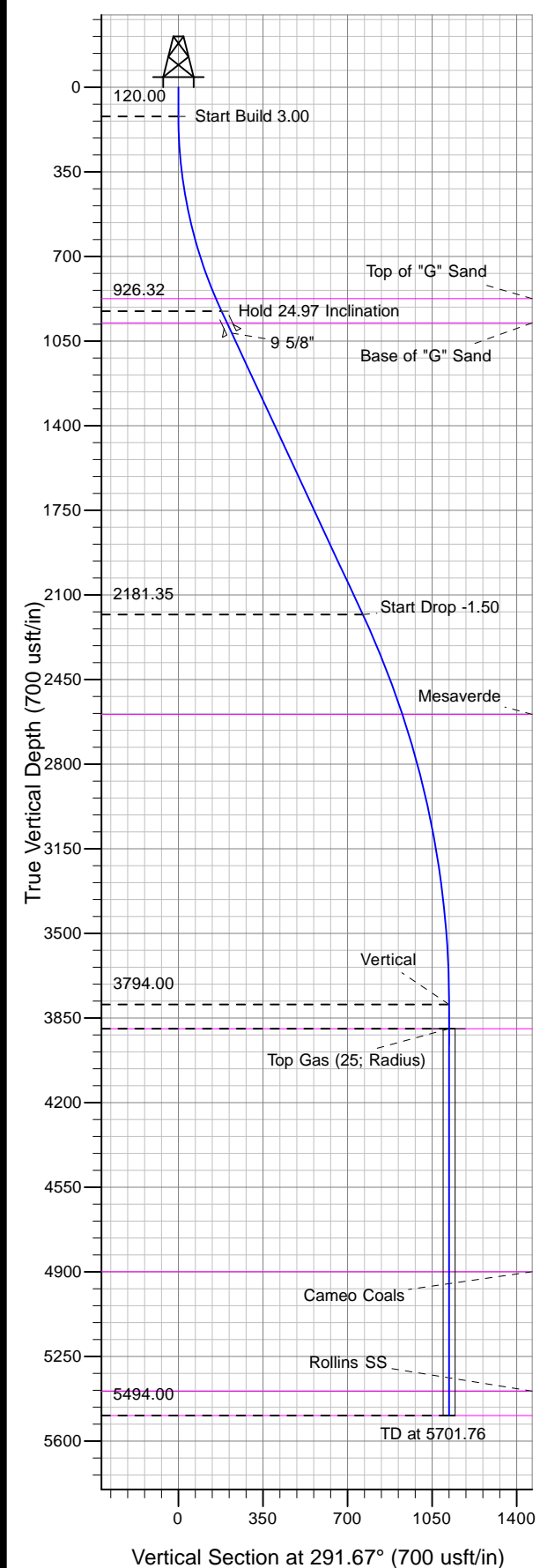
Easting
2269050.15

Latitude
39.42619

Longitude
-108.08796

Slot
A6

Well Name: SG 441-22
Surface Location: SG 42-22 Pad
North American Datum 1983 , US State Plane 1983 , Colorado Central Zone
Ground Elevation: 5218.00
KELLY BUSHING @ 5244.00usft (Nabors 573 (26' RKB) kjs)



Project: SG 22-07S-096W
Site: SG 42-22 Pad
Well: SG 441-22
Design #2 02Jul12 kjs



Azimuths to True North
Magnetic North: 10.25°
Magnetic Field
Strength: 52161.0snT
Dip Angle: 65.66°
Date: 4/5/2012
Model: IGRF2005-10

ANNOTATIONS

MD	Inc	Azi	TVD	+N/-S	+E/-W	Vsect	Departure	Annotation
120.00	0.00	0.00	120.00	0.00	0.00	0.00	0.00	Start Build 3.00
952.43	24.97	291.67	926.32	65.93	-165.94	178.56	178.56	Hold 24.97 Inclination
2336.90	24.97	291.67	2181.35	281.76	-709.14	763.07	763.07	Start Drop -1.50
4001.76	0.00	0.00	3794.00	413.62	-1041.02	1120.18	1120.18	Vertical
4101.76	0.00	0.00	3894.00	413.62	-1041.02	1120.18	1120.18	Top Gas
5701.76	0.00	0.00	5494.00	413.62	-1041.02	1120.18	1120.18	TD at 5701.76