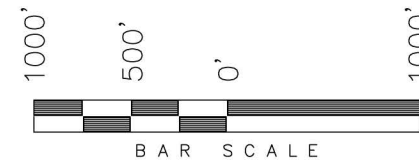
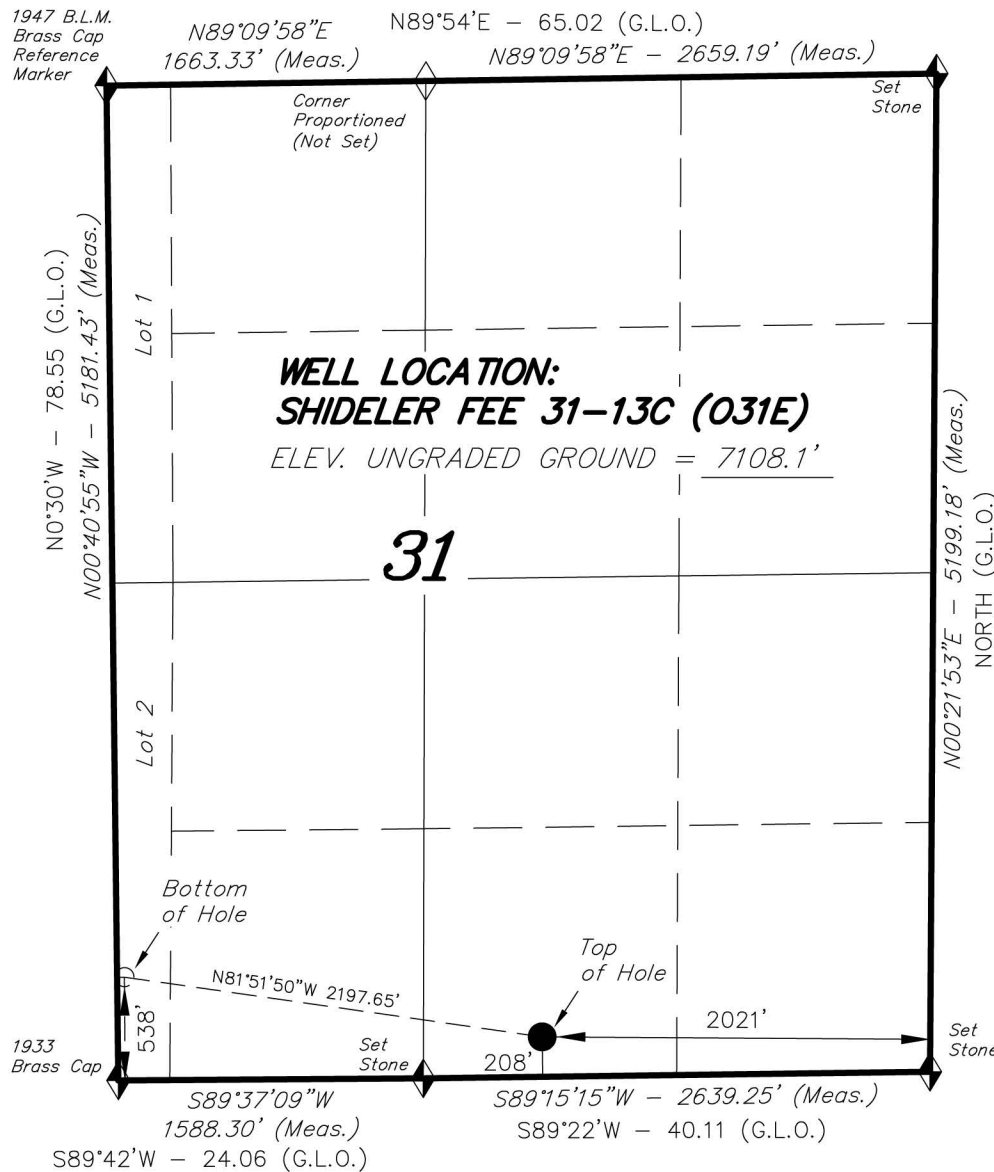


# T7S, R92W, 6th P.M.

ENCANA OIL & GAS (USA) INC

WELL LOCATION, SHIDELER FEE 31-13C (031E), LOCATED AS SHOWN IN THE SW 1/4 SE 1/4 OF SECTION 31, T7S, R92W, 6th P.M. GARFIELD COUNTY, COLORADO.

TARGET BOTTOM HOLE, SHIDELER FEE 31-13C (031E), LOCATED AS SHOWN IN LOT 2 OF SECTION 31, T7S, R92W, 6th P.M. GARFIELD COUNTY, COLORADO.



## NOTES:

1. Well footages are measured at right angles to the Section Lines.
2. Bearings are based on Global Positioning Satellite observations.
3. G.P.S. Operator: C.D. Slauch, (PDOP) = 2.9
4. The Bottom of Hole footages are 538' FSL & 38' FWL.

THIS IS TO CERTIFY THAT THE ABOVE PLAT WAS PREPARED FROM FIELD NOTES OF REAL SURVEYS MADE BY ME OR UNDER MY SUPERVISION. THE LOCATION HAS BEEN STAKED ON THE GROUND AS SHOWN ON THE PLAT, AND THAT THE SAID NOTES ARE TRUE AND CORRECT TO THE BEST OF MY KNOWLEDGE AND BELIEF.

REGISTERED LAND SURVEYOR  
REGISTRATION # 30125  
STATE OF COLORADO

◆ = SECTION CORNERS LOCATED

Basis of elevation is the Rifle 2 Triangulation Station. 39°31'53.80" N Lat. & 107°47'07.78" W Long. (NAD 83). Elevation = 5323.1' (NAVD88).

NAD 83 (SURFACE LOCATION)	
LATITUDE = 39°23'46.89" (39.396357°)	
LONGITUDE = 107°42'22.03" (107.706118°)	
NAD 83 (BOTTOM HOLE LOCATION)	
LATITUDE = 39°23'49.98" (39.397216°)	
LONGITUDE = 107°42'49.73" (107.713813°)	

## TRI STATE LAND SURVEYING & CONSULTING

180 NORTH VERNAL AVE. - VERNAL, UTAH 84078  
(435) 781-2501

DATE SURVEYED: 11-13-10	SURVEYED BY: C.D.S	SHEET <b>21</b> OF 37
DATE DRAWN: 11-16-11	DRAWN BY: M.W.	
REVISED: 09-10-12 M.W.	SCALE: 1" = 1000'	