

Project: Wattenberg Field
Site: B (Sec. 1-T5N-R64W) Weld County, CO
Well: SLW Ranch B12-69-1HN
Design: APD - Rev 0

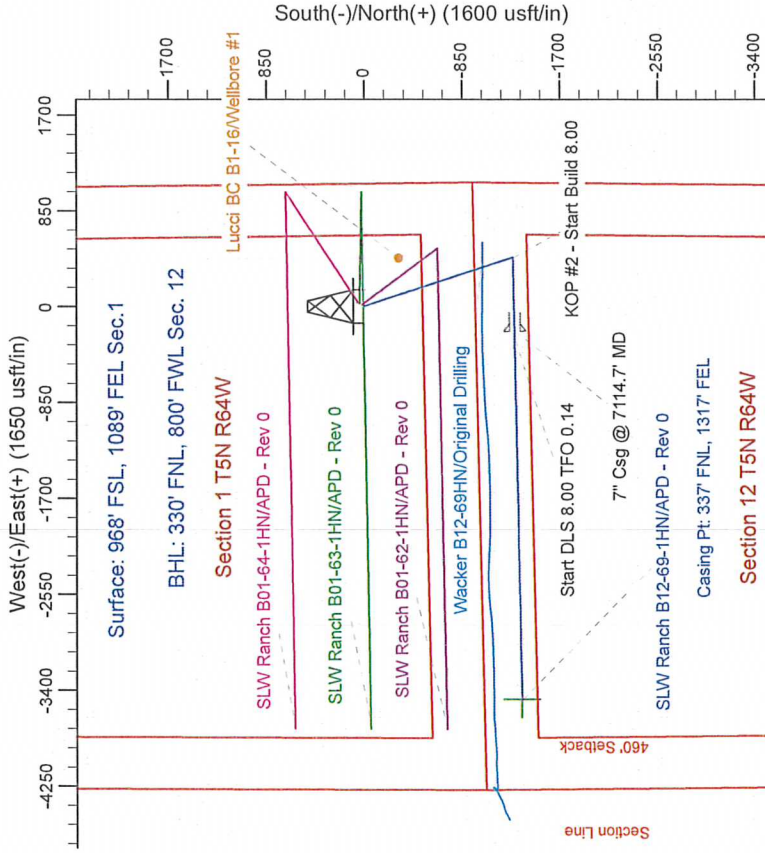
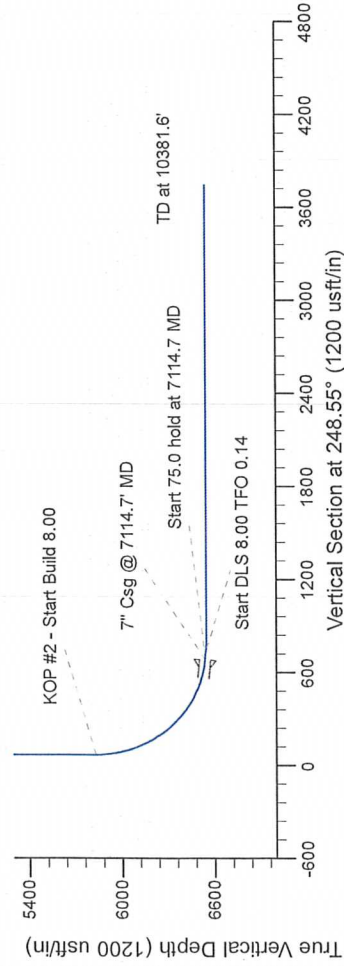
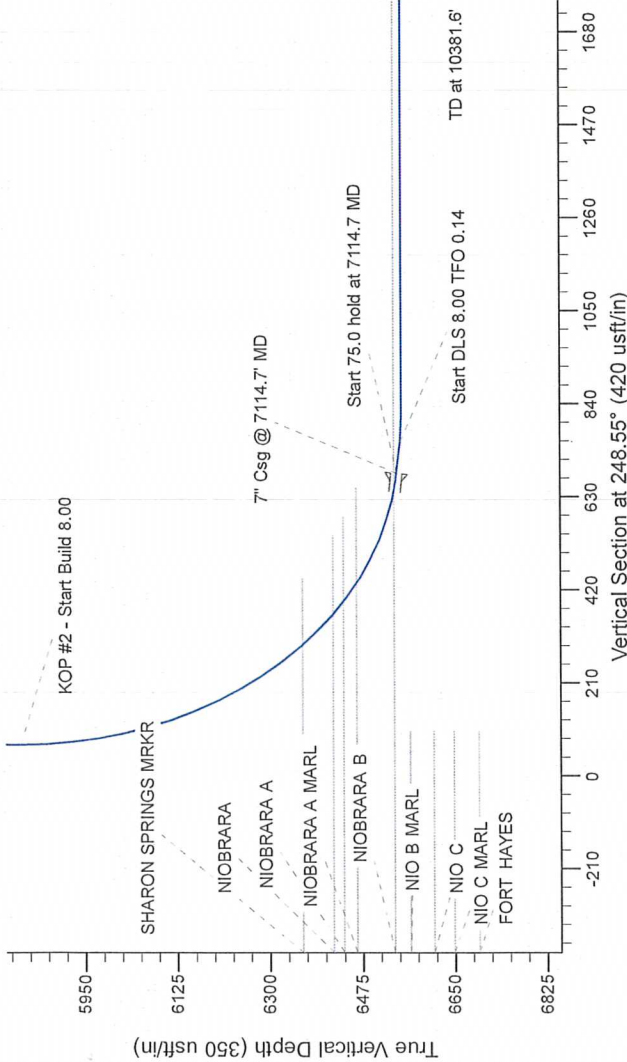
Northern Region Drilling

Geodetic System: US State Plane 1983
Datum: North American Datum 1983
Ellipsoid: GRS 1980
Zone: Colorado Northern Zone
System Datum: Mean Sea Level

SECTION DETAILS

Sec	MD	Inc	Azi	TVD	+N/S	+E/W	Dleg	TFace	VSecl	Target
1	0.0	0.00	0.00	0.0	0.0	0.0	0.00	0.00	0.0	0.0
2	1000.0	0.00	181.47	1000.0	0.0	0.0	2.50	181.47	7.0	0.0
3	1759.8	20.00	1759.8	1759.8	-13.0	43.9	2.50	181.47	7.0	0.0
4	4759.3	20.00	167.7	4759.3	-13.0	43.9	2.50	181.47	7.0	0.0
5	5759.9	0.00	0.00	5759.9	-1298.0	351.1	2.50	180.00	62.8	0.0
6	6052.2	0.00	0.00	5770.0	-1298.0	351.1	2.50	180.00	69.8	0.0
7	7114.7	85.00	268.95	6547.3	-1310.0	435.0	8.00	268.95	682.6	0.0
8	7189.7	85.00	268.95	6547.3	-1311.3	-293.4	8.00	0.00	752.6	0.0
9	7232.2	90.00	268.96	6550.0	-1312.5	-355.8	8.00	0.14	811.1	0.0
10	10381.6	90.00	268.96	6550.0	-1369.2	-3484.6	0.00	0.00	3744.0	0.0

SLW Ranch B12-69-1HN BHL 330'FNL, 800'FWL



T G M

Azimuths to Grid North
True North: -0.65°
Magnetic North: 7.87°

Magnetic Field
Strength: 53077.5nT
Dip Angle: 67.08°
Date: 8/7/2012
Model: IGRF200510

WELL DETAILS: SLW Ranch B12-69-1HN		
North	Ground Level: 4605.0	Longitude
1398871.02	Easting 3280452.34	-104.492650
Plan: APD - Rev 0 (SLW Ranch B12-69-1HN/Original Drilling)		
Created By: Carrie Willers		Date: 16.09. August 30 2012
Checked:		Date:
Reviewed:		Date:
Approved:		Date: