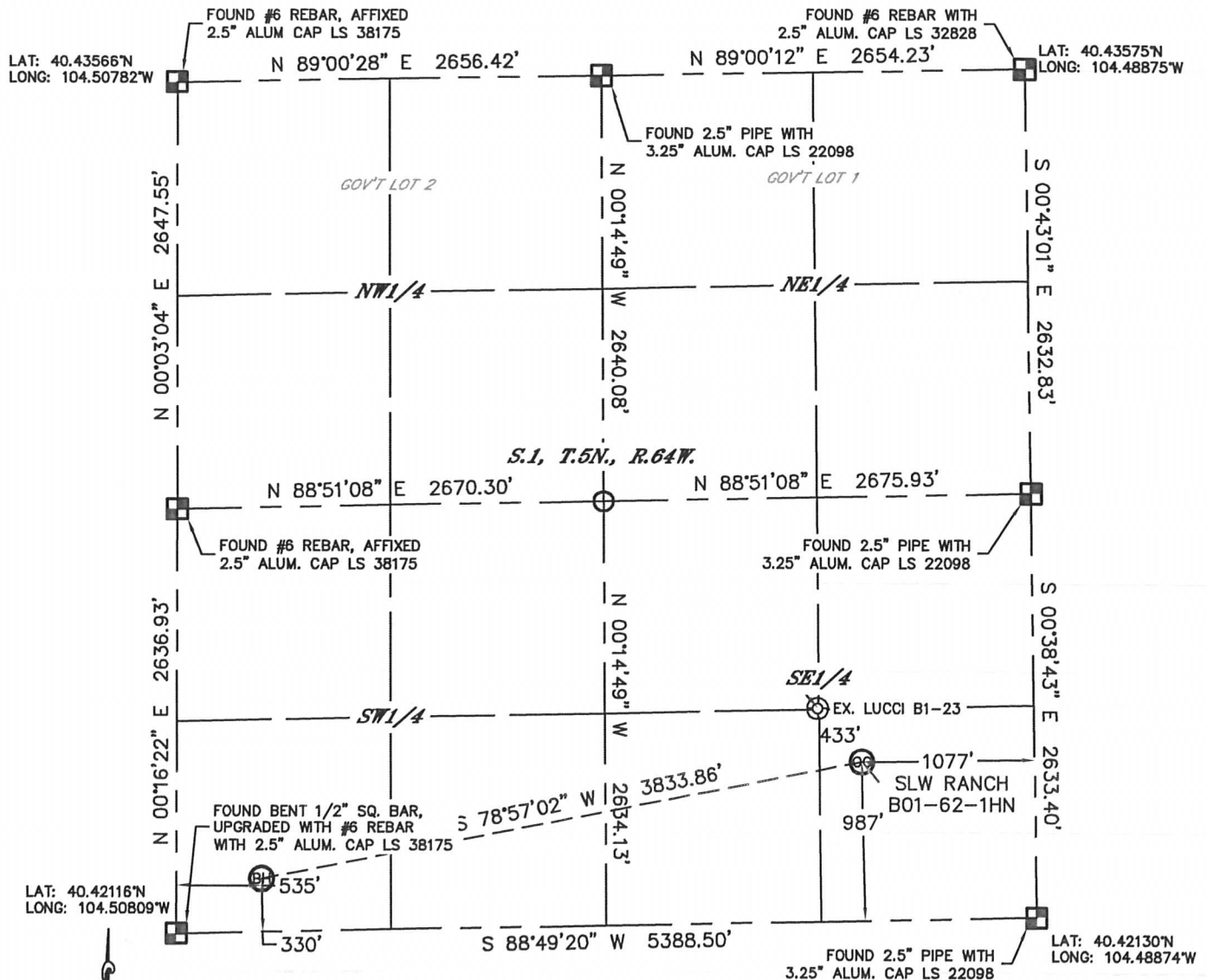


Lat40°, Inc. 1635 Foxtrail Drive, Suite 325 Loveland, CO 970-776-3321

WELL LOCATION CERTIFICATE

THIS MAP DOES NOT REPRESENT A BOUNDARY SURVEY

SECTION: 1
TOWNSHIP: 5N
RANGE: 64W



In accordance with a request from Mike Rodine with Noble Energy Inc., Lat40°, Inc. has determined the surface location of the SLW RANCH B01-62-1HN to be 987' from the SOUTH line and 1077' from the EAST line and the bottom hole to be 330' from the SOUTH line and 535' from the WEST line as measured at right angles from the section lines of Section 1, Township 5 North, Range 64 West of the Sixth Principal Meridian, County of Weld, State of Colorado.

I hereby state that this Well Location Certificate was prepared by me, or under my direct supervision, that the fieldwork was completed on 4/2/2012, for and on behalf of Noble Energy Inc. That this is not a Land Survey Plat or an Improvement Survey Plat, and that it is not to be relied upon for establishment of fence, building, or other future Improvement lines.

NOTE:

- 1) Bearings shown are Grid Bearings of the Colorado State Plane Coordinate System, North Zone, North American Datum 1983/2007. The lineal dimensions as contained herein are based upon the "U.S. Survey Foot."
- 2) Ground elevations are based on an observed GPS elevation (NAVD 1988 DATUM).
- 3) NEAREST EXISTING WELL: LUCCI B1-23, 433'
- 4) IMPROVEMENTS: See LOCATION DRAWING for all visible improvements within 400' of disturbed area.
- 5) SURFACE USE: RANGELAND
- 6) INSTRUMENT OPERATOR: ADAM KELLY

NOTE

According to Colorado law, you must commence any legal action based upon any defect in this W.L.C. within three years after you discover such defect. In no event, may any action based upon any defect in this survey be commenced more than ten years after the date of the certificate shown hereon. (13-80-105 C.R.S.)

LEGEND

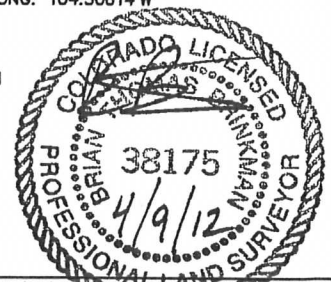
- = ALIQUOT MONUMENT AS DESCRIBED
- = CALCULATED POSITION

SURFACE LOCATION

LAT: 40.42398°N
LONG: 104.49280°W
PDOP: 1.6
ELEV: 4804'
1/4, 1/4: SE1/4SE1/4
NEAREST PROPERTY LINE: 987' SOUTH

BOTTOM HOLE

LAT: 40.42208°N
LONG: 104.50614°W



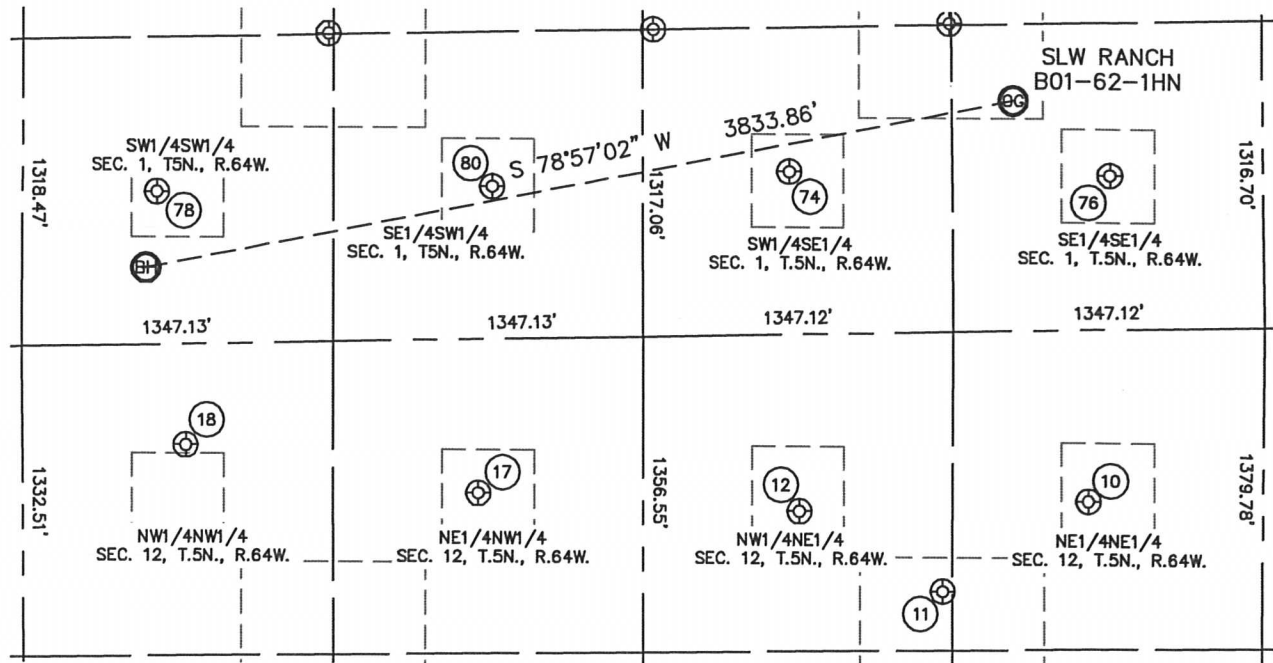
Brian T. Brinkman—On behalf of Lat40°, Inc.
Colorado Licensed Professional
Land Surveyor No. 38175
DATE: 4/4/2012
PROJECT#: 2012029

Lat40°, Inc. 1635 Foxtrail Drive, Suite 325 Loveland, CO 970-776-3321

SITE SKETCH

SLW RANCH B01-62-1HN

SECTION: 1
TOWNSHIP: 5N
RANGE: 64W



(10)
TREBOR B12-1
NE1/4NE1/4
737' FNL
757' FEL
LAT-40.41926°N
LONG-104.49151°W
PDOP:1.4
ELEV: 4632'

(11)
TREBOR B12-17
NW1/4NE1/4
1113' FNL
1385' FEL
LAT-40.41821°N
LONG-104.49379°W
PDOP:1.1
ELEV: 4625'

(12)
TREBOR B12-2
NW1/4NE1/4
759' FNL
2009' FEL
LAT-40.41916°N
LONG-104.49601°W
PDOP:1.4
ELEV: 4596'

(17)
TREBOR B12-3
NE1/4NW1/4
660' FNL
1972' FWL
LAT-40.41940°N
LONG-104.50101°W
PDOP:1.5
ELEV: 4602'

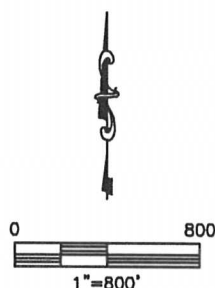
(18)
TREBOR B12-4
NW1/4NW1/4
432' FNL
707' FWL
LAT-40.41999°N
LONG-104.50555°W
PDOP:1.7
ELEV: 4606'

(74)
LUCCI 1-15
SW1/4SE1/4
699' FSL
2054' FEL
LAT-40.42316°N
LONG-104.49611°W
PDOP:1.3
ELEV: 4600'

(76)
LUCCI BC B1-16
SE1/4SE1/4
660' FSL
664' FEL
LAT-40.42309°N
LONG-104.49112°W
PDOP:1.4
ELEV: 4626'

(78)
LUCCI BC B1-13
SW1/4SW1/4
656' FSL
580' FWL
LAT-40.42298°N
LONG-104.50596°W
PDOP:1.5
ELEV: 4613'

(80)
LUCCI BC B1-14
SE1/4SW1/4
654' FSL
2034' FWL
LAT-40.42301°N
LONG-104.50074°W
PDOP:1.5
ELEV: 4607'



DATE: 4/4/2012
PROJECT#: 2012029