

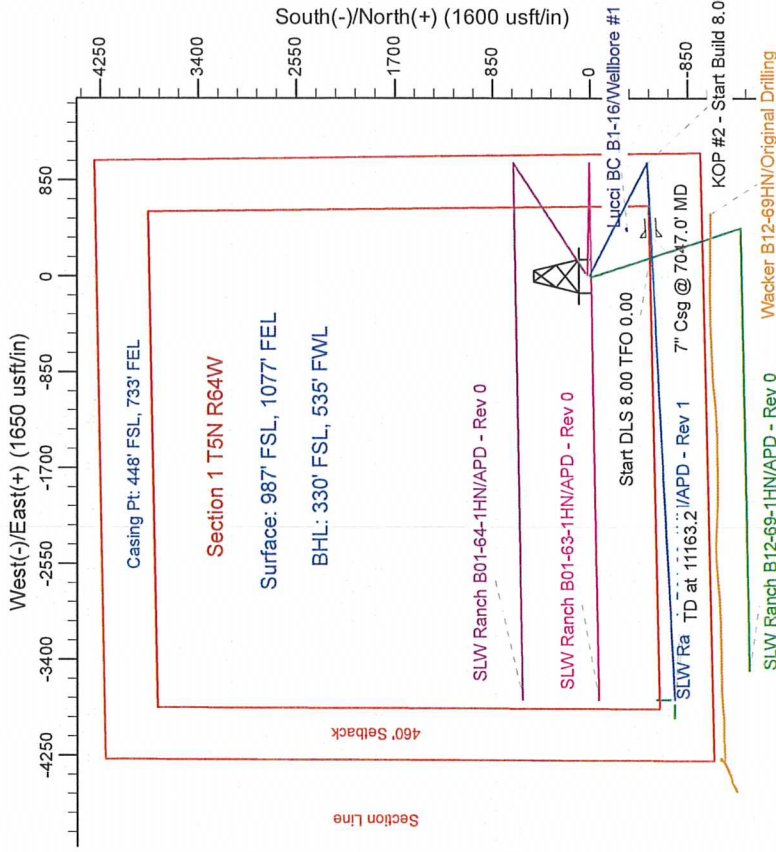
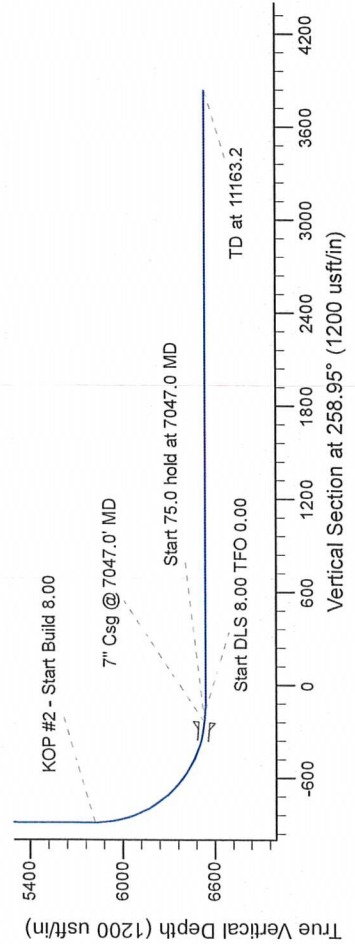
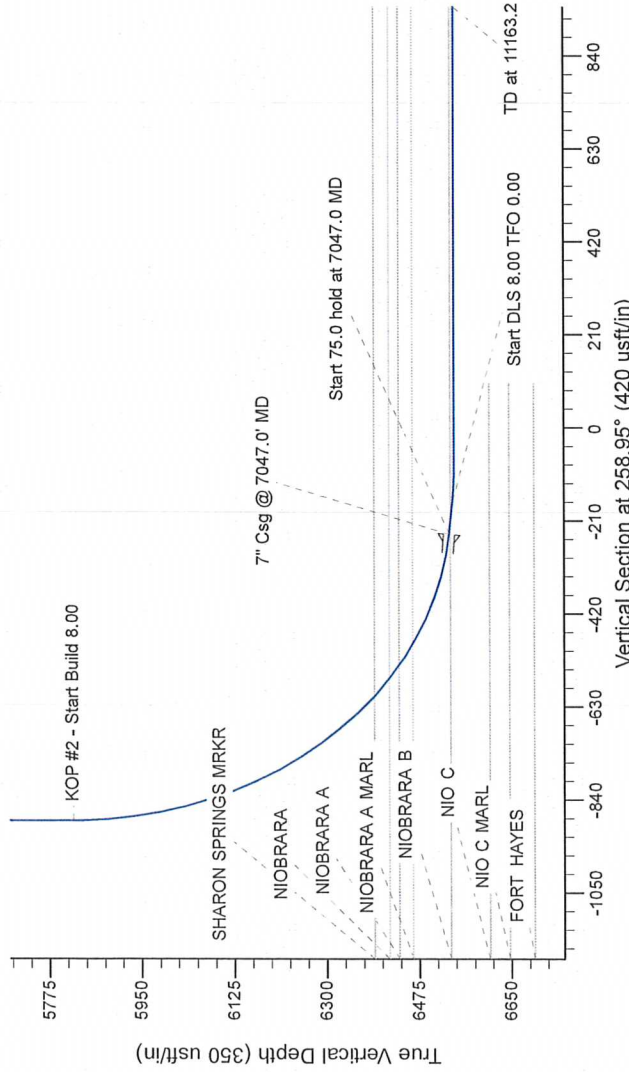
Project: Wattenberg Field
Site: B(Sec.1-T05N-R64W) Weld County, CO
Well: SLW Ranch B01-62-1HN
Wellbore: Original Drilling
Design: APD - Rev 1

Geodetic System: US State Plane 1983
Datum: North American Datum 1983
Ellipsoid: GRS 1980
Zone: Colorado Northern Zone
System Datum: Mean Sea Level

Northern Region Drilling

SECTION DETAILS

Sec	MD	Inc	Azi	TVD	+N/-S	+E/-W	Dleg	TFace	Vsect	Target
1	0.0	0.00	0.00	0.0	0.0	0.0	0.00	0.00	0.0	
2	1200.0	0.00	0.00	1200.0	0.0	0.0	0.00	0.00	0.0	
3	1319.4	17.38	116.52	1507.5	50.0	100.2	0.00	116.52	-88.8	
4	4520.3	0.00	0.00	5975.4	-500.0	901.8	2.00	180.00	-798.8	
5	5984.5	0.00	0.00	5975.4	-500.0	1002.0	2.50	180.00	-887.8	
6	7047.0	85.00	267.18	6532.7	-532.2	349.0	8.00	267.18	-240.5	
7	7122.0	90.00	267.18	6539.2	-635.8	274.4	8.00	0.00	-166.6	
8	7184.5	90.00	267.18	6542.0	-538.9	212.1	8.00	0.00	-104.8	
10	11163.2	90.00	267.18	6542.0	-734.7	-3761.8	0.00	0.00	3632.9	SLW Ranch B01-62-1HN BHL 330'FSL, 535'FWL



T G M

Azimuths to Grid North
True North: -0.65°
Magnetic North: 7.87°

Magnetic Field
Strength: 53077.8snT
Dip Angle: 67.08°
Date: 8/6/2012
Model: IGRF200510

WELL DETAILS: SLW Ranch B01-62-1HN			
Northing	Easting	Ground Level	Longitude
1398889.39	3280466.06	4604.0	-104.492600
Latitude			
40.423980			
Plan: APD - Rev 1 (SLW Ranch B01-62-1HN/Original Drilling)			
Created By: Carrie Willers		Date: 14:35, September 17 2012	
Checked:		Date:	
Reviewed:		Date:	
Approved:		Date:	