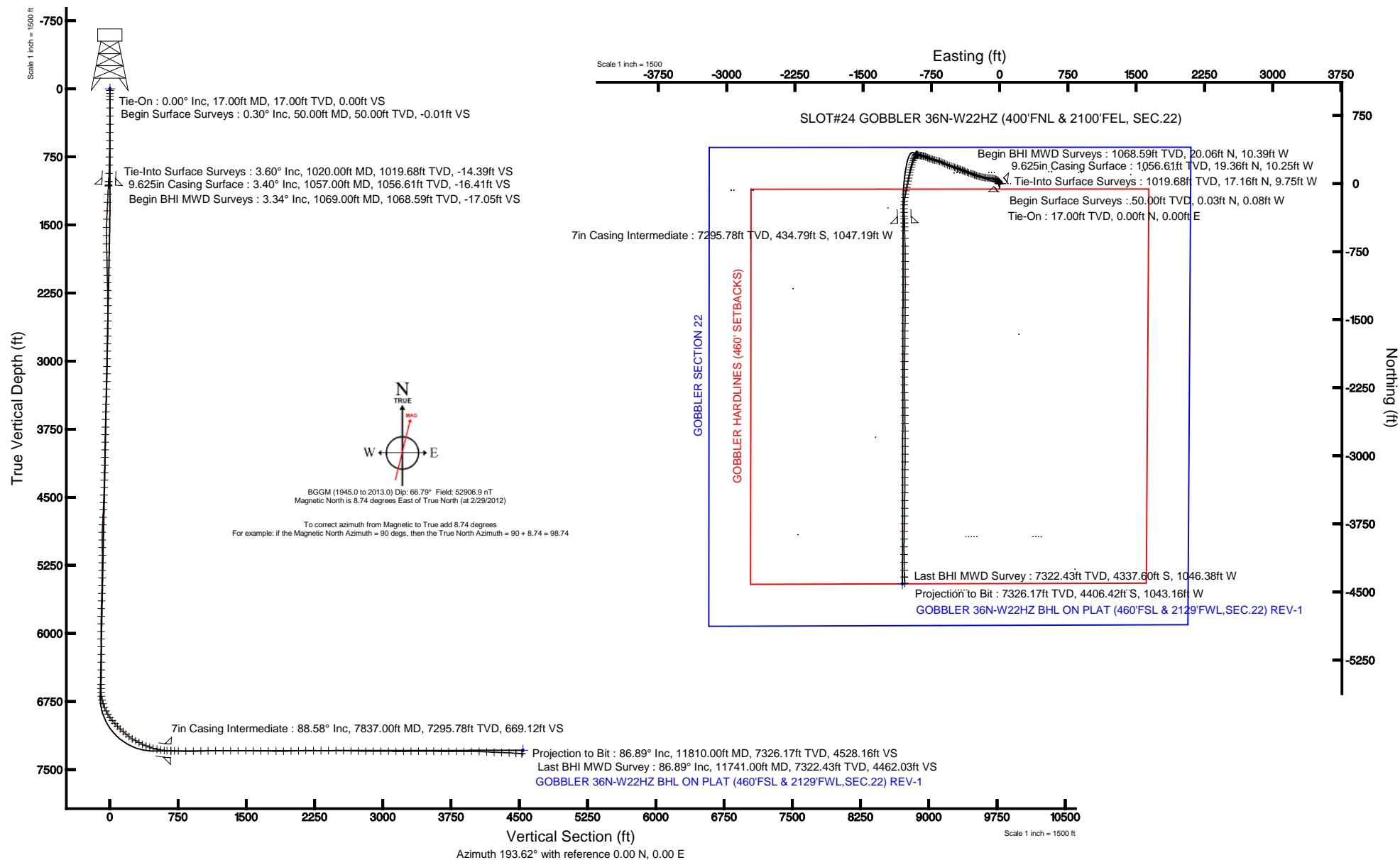


KERR-MCGEE OIL & GAS ONSHORE LP

Location: COLORADO Slot: SLOT#24 GOBBLER 36N-W22HZ (400'FNL & 2100'FEL, SEC.22)
 Field: WELD COUNTY (KERR MCGEE) Well: GOBBLER 36N-W22HZ
 Facility: SEC.22-T2N-R66W Wellbore: GOBBLER 36N-W22HZ PWB

Plot reference wellpath is GOBBLER 36N-W22HZ (REV-8.0) PWP	
True vertical depths are referenced to XTREME 6 (RKB)	Grid System: NAD83 / Lambert Colorado SP, Northern Zone (501), US feet
Measured depths are referenced to XTREME 6 (RKB)	North Reference: True north
XTREME 6 (RKB) to Mean Sea Level: 5070 feet	Scale: True distance
Mean Sea Level to Mud line (At Slot: SLOT#24 GOBBLER 36N-W22HZ (400'FNL & 2100'FEL, SEC.22)): 0 feet	Depths are in feet
Coordinates are in feet referenced to Slot	Created by: wilsjef02 on 3/14/2012





Actual Wellpath Report

GOBBLER 36N-W22HZ AWP

Page 1 of 6



REFERENCE WELLPATH IDENTIFICATION

Operator	KERR-MCGEE OIL & GAS ONSHORE LP	Slot	SLOT#24 GOBBLER 36N-W22HZ (400'FNL & 2100'FEL, SEC.22)
Area	COLORADO	Well	GOBBLER 36N-W22HZ
Field	WELD COUNTY (KERR MCGEE)	Wellbore	GOBBLER 36N-W22HZ AWP
Facility	SEC.22-T2N-R66W		

REPORT SETUP INFORMATION

Projection System	NAD83 / Lambert Colorado SP, Northern Zone (501), US feet	Software System	WellArchitect® 3.0.2
North Reference	True	User	Wilsjef02
Scale	0.999959	Report Generated	3/14/2012 at 14:01:41
Convergence at slot	0.48° East	Database/Source file	WellArchitectDB/GOBBLER_36N-W22HZ_AWP.xml

WELLPATH LOCATION

	Local coordinates		Grid coordinates		Geographic coordinates	
	North[ft]	East[ft]	Easting[US ft]	Northing[US ft]	Latitude	Longitude
Slot Location	71.49	2723.08	3206523.26	1290992.54	40°07'47.305"N	104°45'41.065"W
Facility Reference Pt			3203800.98	1290898.68	40°07'46.600"N	104°46'16.122"W
Field Reference Pt			3197771.84	1268891.29	40°04'09.600"N	104°47'36.000"W

WELLPATH DATUM

Calculation method	Minimum curvature	XTREME 6 (RKB) to Facility Vertical Datum	5070.00ft
Horizontal Reference Pt	Slot	XTREME 6 (RKB) to Mean Sea Level	5070.00ft
Vertical Reference Pt	XTREME 6 (RKB)	XTREME 6 (RKB) to Mud Line at Slot (SLOT#24 GOBBLER 36N-W22HZ (400'FNL & 2100'FEL, SEC.22))	5070.00ft
MD Reference Pt	XTREME 6 (RKB)	Section Origin	N 0.00, E 0.00 ft
Field Vertical Reference	Mean Sea Level	Section Azimuth	193.62°



Actual Wellpath Report

GOBBLER 36N-W22HZ AWP

Page 2 of 6



REFERENCE WELLPATH IDENTIFICATION

Operator	KERR-MCGEE OIL & GAS ONSHORE LP	Slot	SLOT#24 GOBBLER 36N-W22HZ (400'FNL & 2100'FEL, SEC.22)
Area	COLORADO	Well	GOBBLER 36N-W22HZ
Field	WELD COUNTY (KERR MCGEE)	Wellbore	GOBBLER 36N-W22HZ AWP
Facility	SEC.22-T2N-R66W		

WELLPATH DATA (157 stations) † = interpolated/extrapolated station

MD [ft]	Inclination [°]	Azimuth [°]	TVD [ft]	Vert Sect [ft]	North [ft]	East [ft]	Latitude	Longitude	DLS [°/100ft]	Comments
0.00†	0.000	291.700	0.00	0.00	0.00	0.00	40°07'47.305"N	104°45'41.065"W	0.00	
17.00	0.000	291.700	17.00	0.00	0.00	0.00	40°07'47.305"N	104°45'41.065"W	0.00	Tie-On
50.00	0.300	291.700	50.00	-0.01	0.03	-0.08	40°07'47.305"N	104°45'41.066"W	0.91	Begin Surface Surveys
80.00	0.200	310.200	80.00	-0.05	0.09	-0.19	40°07'47.306"N	104°45'41.067"W	0.42	
120.00	0.200	322.400	120.00	-0.12	0.20	-0.29	40°07'47.307"N	104°45'41.069"W	0.11	
210.00	0.400	314.000	210.00	-0.38	0.54	-0.61	40°07'47.310"N	104°45'41.073"W	0.23	
300.00	0.400	308.800	300.00	-0.67	0.95	-1.08	40°07'47.314"N	104°45'41.079"W	0.04	
390.00	0.800	310.400	389.99	-1.09	1.56	-1.81	40°07'47.320"N	104°45'41.088"W	0.44	
480.00	0.800	320.200	479.98	-1.75	2.45	-2.69	40°07'47.329"N	104°45'41.100"W	0.15	
570.00	1.100	321.600	569.97	-2.65	3.61	-3.62	40°07'47.341"N	104°45'41.112"W	0.33	
660.00	1.300	324.800	659.95	-3.86	5.12	-4.75	40°07'47.356"N	104°45'41.126"W	0.23	
750.00	1.400	332.600	749.92	-5.36	6.93	-5.84	40°07'47.373"N	104°45'41.140"W	0.23	
840.00	1.700	333.900	839.89	-7.21	9.10	-6.94	40°07'47.395"N	104°45'41.154"W	0.34	
930.00	2.800	339.600	929.82	-10.06	12.36	-8.29	40°07'47.427"N	104°45'41.172"W	1.25	
1020.00	3.600	345.900	1019.68	-14.39	17.16	-9.75	40°07'47.475"N	104°45'41.190"W	0.97	Tie-Into Surface Surveys
1069.00	3.340	348.960	1068.59	-17.05	20.06	-10.39	40°07'47.503"N	104°45'41.199"W	0.65	Begin BHI MWD Surveys
1160.00	3.890	335.330	1159.41	-21.88	25.46	-12.19	40°07'47.557"N	104°45'41.222"W	1.12	
1252.00	5.260	317.090	1251.12	-26.65	31.39	-16.36	40°07'47.615"N	104°45'41.276"W	2.15	
1344.00	6.540	311.710	1342.63	-31.45	37.96	-23.15	40°07'47.680"N	104°45'41.363"W	1.51	
1437.00	7.200	300.430	1434.97	-35.63	44.44	-32.13	40°07'47.744"N	104°45'41.479"W	1.61	
1528.00	7.850	290.310	1525.19	-38.00	49.49	-42.87	40°07'47.794"N	104°45'41.617"W	1.62	
1620.00	8.840	285.280	1616.21	-38.94	53.53	-55.58	40°07'47.834"N	104°45'41.781"W	1.34	
1713.00	9.670	277.830	1708.01	-38.36	56.48	-70.22	40°07'47.863"N	104°45'41.969"W	1.57	
1805.00	10.120	275.900	1798.64	-36.49	58.36	-85.91	40°07'47.882"N	104°45'42.171"W	0.61	
1897.00	10.580	275.900	1889.14	-34.27	60.06	-102.35	40°07'47.899"N	104°45'42.383"W	0.50	
1982.00	11.140	275.700	1972.62	-32.09	61.68	-118.28	40°07'47.914"N	104°45'42.588"W	0.66	
2067.00	11.030	274.580	2056.03	-29.69	63.14	-134.56	40°07'47.929"N	104°45'42.797"W	0.28	
2150.00	10.560	278.900	2137.56	-27.81	64.95	-149.99	40°07'47.947"N	104°45'42.996"W	1.13	
2235.00	10.010	278.130	2221.20	-26.47	67.20	-165.00	40°07'47.969"N	104°45'43.189"W	0.67	
2321.00	9.960	279.690	2305.90	-25.24	69.51	-179.73	40°07'47.992"N	104°45'43.379"W	0.32	
2406.00	10.430	281.040	2389.55	-24.39	72.22	-194.53	40°07'48.019"N	104°45'43.569"W	0.62	
2491.00	10.180	282.460	2473.18	-23.90	75.32	-209.41	40°07'48.049"N	104°45'43.761"W	0.42	
2576.00	10.520	286.830	2556.80	-24.18	79.18	-224.17	40°07'48.087"N	104°45'43.951"W	1.01	
2662.00	10.370	288.270	2641.38	-25.25	83.88	-239.04	40°07'48.134"N	104°45'44.142"W	0.35	
2747.00	9.090	287.110	2725.15	-26.28	88.26	-252.72	40°07'48.177"N	104°45'44.319"W	1.52	
2832.00	9.710	290.140	2809.01	-27.50	92.70	-265.87	40°07'48.221"N	104°45'44.488"W	0.93	
2915.00	8.570	289.710	2890.95	-28.95	97.20	-278.26	40°07'48.265"N	104°45'44.647"W	1.38	
3000.00	9.910	292.610	2974.85	-30.77	102.14	-290.98	40°07'48.314"N	104°45'44.811"W	1.67	
3086.00	12.350	290.000	3059.23	-32.95	108.14	-306.45	40°07'48.374"N	104°45'45.010"W	2.90	
3170.00	12.100	286.790	3141.32	-34.43	113.75	-323.32	40°07'48.429"N	104°45'45.227"W	0.86	
3255.00	11.860	290.330	3224.47	-35.95	119.36	-340.04	40°07'48.484"N	104°45'45.443"W	0.91	
3341.00	11.220	291.510	3308.73	-38.13	125.50	-356.11	40°07'48.545"N	104°45'45.650"W	0.79	
3426.00	10.740	291.560	3392.18	-40.36	131.44	-371.17	40°07'48.604"N	104°45'45.844"W	0.56	
3511.00	10.110	292.340	3475.77	-42.58	137.19	-385.44	40°07'48.661"N	104°45'46.027"W	0.76	
3597.00	9.040	293.220	3560.57	-44.86	142.72	-398.63	40°07'48.715"N	104°45'46.197"W	1.26	
3682.00	9.330	291.980	3644.48	-46.97	147.93	-411.16	40°07'48.767"N	104°45'46.358"W	0.41	
3767.00	9.980	294.080	3728.28	-49.31	153.52	-424.27	40°07'48.822"N	104°45'46.527"W	0.87	
3852.00	10.530	289.640	3811.92	-51.46	159.13	-438.31	40°07'48.878"N	104°45'46.708"W	1.13	
3936.00	9.220	291.780	3894.68	-53.23	164.21	-451.79	40°07'48.928"N	104°45'46.881"W	1.62	
4020.00	9.830	290.380	3977.52	-55.03	169.20	-464.76	40°07'48.977"N	104°45'47.048"W	0.78	
4106.00	10.820	287.420	4062.13	-56.43	174.18	-479.34	40°07'49.026"N	104°45'47.236"W	1.31	
4191.00	12.180	288.330	4145.42	-57.69	179.38	-495.47	40°07'49.078"N	104°45'47.444"W	1.61	
4276.00	13.840	289.660	4228.23	-59.50	185.62	-513.56	40°07'49.139"N	104°45'47.677"W	1.98	
4362.00	14.440	288.720	4311.63	-61.53	192.53	-533.40	40°07'49.208"N	104°45'47.932"W	0.75	
4447.00	14.290	290.830	4393.97	-63.79	199.66	-553.24	40°07'49.278"N	104°45'48.188"W	0.64	
4531.00	13.840	292.200	4475.45	-66.60	207.14	-572.23	40°07'49.352"N	104°45'48.432"W	0.67	
4616.00	13.140	293.980	4558.11	-69.85	214.91	-590.47	40°07'49.429"N	104°45'48.667"W	0.96	
4700.00	13.020	294.190	4639.93	-73.30	222.67	-607.83	40°07'49.505"N	104°45'48.890"W	0.15	
4785.00	12.740	297.620	4722.79	-77.33	230.94	-624.87	40°07'49.587"N	104°45'49.110"W	0.96	
4870.00	13.550	296.090	4805.56	-81.75	239.66	-642.11	40°07'49.673"N	104°45'49.332"W	1.04	



Actual Wellpath Report

GOBBLER 36N-W22HZ AWP

Page 3 of 6



REFERENCE WELLPATH IDENTIFICATION

Operator	KERR-MCGEE OIL & GAS ONSHORE LP	Slot	SLOT#24 GOBBLER 36N-W22HZ (400'FNL & 2100'FEL, SEC.22)
Area	COLORADO	Well	GOBBLER 36N-W22HZ
Field	WELD COUNTY (KERR MCGEE)	Wellbore	GOBBLER 36N-W22HZ AWP
Facility	SEC.22-T2N-R66W		

WELLPATH DATA (157 stations)

MD [ft]	Inclination [°]	Azimuth [°]	TVD [ft]	Vert Sect [ft]	North [ft]	East [ft]	Latitude	Longitude	DLS [°/100ft]	Comments
4955.00	13.340	288.370	4888.24	-84.71	247.13	-660.37	40°07'49.747"N	104°45'49.567"W	2.12	
5041.00	12.070	282.160	4972.14	-85.30	252.15	-678.57	40°07'49.797"N	104°45'49.801"W	2.17	
5126.00	11.790	281.220	5055.30	-84.71	255.71	-695.78	40°07'49.832"N	104°45'50.023"W	0.40	
5211.00	10.100	282.420	5138.75	-84.20	259.01	-711.58	40°07'49.864"N	104°45'50.226"W	2.01	
5297.00	9.880	286.030	5223.45	-84.35	262.67	-726.03	40°07'49.901"N	104°45'50.412"W	0.77	
5382.00	10.370	288.790	5307.12	-85.35	267.14	-740.28	40°07'49.945"N	104°45'50.596"W	0.81	
5467.00	9.880	289.590	5390.80	-86.79	272.05	-754.40	40°07'49.993"N	104°45'50.777"W	0.60	
5553.00	8.930	290.280	5475.64	-88.34	276.84	-767.61	40°07'50.041"N	104°45'50.947"W	1.11	
5638.00	8.930	292.230	5559.61	-90.09	281.62	-779.90	40°07'50.088"N	104°45'51.106"W	0.36	
5723.00	9.610	293.520	5643.50	-92.30	286.95	-792.52	40°07'50.141"N	104°45'51.268"W	0.84	
5808.00	9.350	294.010	5727.34	-94.76	292.59	-805.33	40°07'50.196"N	104°45'51.433"W	0.32	
5894.00	7.920	290.340	5812.37	-96.72	297.49	-817.27	40°07'50.245"N	104°45'51.587"W	1.78	
5979.00	8.470	287.680	5896.50	-97.85	301.43	-828.72	40°07'50.284"N	104°45'51.734"W	0.79	
6064.00	8.820	282.440	5980.53	-98.16	304.73	-841.05	40°07'50.316"N	104°45'51.893"W	1.01	
6149.00	7.690	277.480	6064.65	-97.41	306.88	-853.05	40°07'50.337"N	104°45'52.047"W	1.57	
6234.00	6.350	277.150	6149.01	-96.28	308.20	-863.36	40°07'50.351"N	104°45'52.180"W	1.58	
6320.00	6.300	282.390	6234.49	-95.64	309.81	-872.68	40°07'50.366"N	104°45'52.300"W	0.67	
6405.00	7.210	281.270	6318.90	-95.32	311.85	-882.47	40°07'50.387"N	104°45'52.426"W	1.08	
6490.00	7.650	285.460	6403.19	-95.29	314.40	-893.15	40°07'50.412"N	104°45'52.564"W	0.82	
6575.00	6.110	293.890	6487.57	-96.27	317.74	-902.74	40°07'50.445"N	104°45'52.687"W	2.16	
6651.00	5.080	302.040	6563.21	-98.06	321.17	-909.29	40°07'50.479"N	104°45'52.771"W	1.71	
6697.00	4.170	298.700	6609.06	-99.14	323.05	-912.49	40°07'50.497"N	104°45'52.813"W	2.06	
6739.00	4.970	245.530	6650.95	-98.41	323.03	-915.48	40°07'50.497"N	104°45'52.851"W	9.88	
6782.00	8.630	218.970	6693.65	-94.35	319.75	-919.21	40°07'50.465"N	104°45'52.899"W	11.01	
6825.00	13.230	210.240	6735.86	-86.71	312.98	-923.72	40°07'50.398"N	104°45'52.957"W	11.34	
6867.00	18.150	207.790	6776.28	-75.76	303.04	-929.19	40°07'50.299"N	104°45'53.028"W	11.82	
6910.00	22.570	204.790	6816.58	-61.16	289.62	-935.78	40°07'50.167"N	104°45'53.112"W	10.56	
6953.00	26.930	205.440	6855.63	-43.52	273.32	-943.43	40°07'50.006"N	104°45'53.211"W	10.16	
6995.00	30.500	200.850	6892.46	-23.63	254.77	-951.31	40°07'49.822"N	104°45'53.312"W	9.99	
7038.00	35.090	197.230	6928.60	-0.46	232.75	-958.86	40°07'49.605"N	104°45'53.410"W	11.60	
7080.00	39.880	194.870	6961.92	25.07	208.19	-965.90	40°07'49.362"N	104°45'53.500"W	11.90	
7123.00	42.000	194.920	6994.40	53.24	180.96	-973.14	40°07'49.093"N	104°45'53.593"W	4.93	
7166.00	44.580	192.660	7025.70	82.71	152.33	-980.15	40°07'48.810"N	104°45'53.684"W	7.00	
7208.00	45.390	192.810	7055.40	112.40	123.37	-986.70	40°07'48.524"N	104°45'53.768"W	1.95	
7251.00	48.170	191.400	7084.85	143.72	92.73	-993.26	40°07'48.221"N	104°45'53.852"W	6.89	
7293.00	49.570	191.240	7112.47	175.33	61.71	-999.47	40°07'47.915"N	104°45'53.932"W	3.35	
7336.00	53.410	191.970	7139.24	208.95	28.76	-1006.24	40°07'47.589"N	104°45'54.019"W	9.03	
7379.00	57.880	191.800	7163.50	244.42	-5.97	-1013.55	40°07'47.246"N	104°45'54.113"W	10.40	
7421.00	61.450	192.350	7184.71	280.65	-41.41	-1021.13	40°07'46.896"N	104°45'54.211"W	8.57	
7464.00	62.420	191.990	7204.94	318.58	-78.50	-1029.13	40°07'46.529"N	104°45'54.314"W	2.37	
7507.00	64.730	190.910	7224.08	357.06	-116.24	-1036.77	40°07'46.156"N	104°45'54.412"W	5.82	
7549.00	68.100	187.930	7240.88	395.44	-154.20	-1043.06	40°07'45.781"N	104°45'54.493"W	10.33	
7592.00	71.480	185.210	7255.74	435.47	-194.28	-1047.66	40°07'45.385"N	104°45'54.553"W	9.85	
7634.00	74.630	182.950	7267.98	475.09	-234.35	-1050.51	40°07'44.989"N	104°45'54.589"W	9.10	
7677.00	77.430	179.370	7278.36	515.82	-276.05	-1051.35	40°07'44.577"N	104°45'54.600"W	10.38	
7719.00	81.470	177.870	7286.05	555.69	-317.32	-1050.35	40°07'44.169"N	104°45'54.587"W	10.24	
7762.00	84.170	178.930	7291.42	596.85	-359.96	-1049.16	40°07'43.748"N	104°45'54.572"W	6.74	
7792.00	86.520	178.380	7293.86	625.74	-389.85	-1048.46	40°07'43.452"N	104°45'54.563"W	8.04	
7837.00	88.580	178.380	7295.78	669.12	-434.79	-1047.19	40°07'43.008"N	104°45'54.546"W	4.58	7" Casing Point
7879.00	88.520	178.070	7296.84	709.60	-476.76	-1045.89	40°07'42.593"N	104°45'54.530"W	0.75	
7922.00	88.440	178.320	7297.99	751.03	-519.72	-1044.53	40°07'42.169"N	104°45'54.512"W	0.61	
8007.00	89.510	178.690	7299.51	833.08	-604.68	-1042.32	40°07'41.329"N	104°45'54.484"W	1.33	
8092.00	90.930	178.650	7299.18	915.20	-689.65	-1040.34	40°07'40.490"N	104°45'54.458"W	1.67	
8177.00	91.290	179.580	7297.53	997.48	-774.63	-1039.03	40°07'39.650"N	104°45'54.441"W	1.17	
8261.00	90.830	180.110	7295.98	1079.05	-858.61	-1038.80	40°07'38.820"N	104°45'54.438"W	0.84	
8346.00	91.080	180.160	7294.56	1161.69	-943.60	-1039.00	40°07'37.980"N	104°45'54.441"W	0.30	
8431.00	88.800	179.250	7294.65	1244.19	-1028.59	-1038.57	40°07'37.140"N	104°45'54.435"W	2.89	
8516.00	90.250	180.510	7295.36	1326.75	-1113.58	-1038.39	40°07'36.300"N	104°45'54.433"W	2.26	
8600.00	90.550	179.980	7294.77	1408.47	-1197.58	-1038.75	40°07'35.470"N	104°45'54.437"W	0.73	
8686.00	89.660	180.260	7294.61	1492.10	-1283.58	-1038.93	40°07'34.620"N	104°45'54.440"W	1.08	



Actual Wellpath Report

GOBBLER 36N-W22HZ AWP

Page 4 of 6



REFERENCE WELLPATH IDENTIFICATION

Operator	KERR-MCGEE OIL & GAS ONSHORE LP	Slot	SLOT#24 GOBBLER 36N-W22HZ (400'FNL & 2100'FEL, SEC.22)
Area	COLORADO	Well	GOBBLER 36N-W22HZ
Field	WELD COUNTY (KERR MCGEE)	Wellbore	GOBBLER 36N-W22HZ AWP
Facility	SEC.22-T2N-R66W		

WELLPATH DATA (157 stations)

MD [ft]	Inclination [°]	Azimuth [°]	TVD [ft]	Vert Sect [ft]	North [ft]	East [ft]	Latitude	Longitude	DLS [°/100ft]	Comments
8771.00	88.550	180.430	7295.94	1574.82	-1368.57	-1039.44	40°07'33.780"N	104°45'54.446"W	1.32	
8856.00	89.660	180.570	7297.27	1657.59	-1453.55	-1040.18	40°07'32.941"N	104°45'54.456"W	1.32	
8942.00	89.110	180.480	7298.19	1741.35	-1539.54	-1040.97	40°07'32.091"N	104°45'54.466"W	0.65	
9027.00	90.180	180.620	7298.72	1824.14	-1624.54	-1041.79	40°07'31.251"N	104°45'54.476"W	1.27	
9112.00	89.290	180.150	7299.11	1906.88	-1709.53	-1042.36	40°07'30.411"N	104°45'54.483"W	1.18	
9197.00	92.530	180.640	7297.76	1989.61	-1794.51	-1042.94	40°07'29.571"N	104°45'54.491"W	3.86	
9281.00	91.790	181.040	7294.59	2071.47	-1878.44	-1044.17	40°07'28.742"N	104°45'54.507"W	1.00	
9365.00	90.220	181.390	7293.12	2153.49	-1962.40	-1045.95	40°07'27.912"N	104°45'54.530"W	1.91	
9450.00	89.630	180.530	7293.23	2236.43	-2047.39	-1047.38	40°07'27.072"N	104°45'54.548"W	1.23	
9535.00	89.570	179.740	7293.83	2319.08	-2132.39	-1047.58	40°07'26.232"N	104°45'54.550"W	0.93	
9621.00	90.430	179.530	7293.83	2402.53	-2218.38	-1047.03	40°07'25.382"N	104°45'54.543"W	1.03	
9706.00	90.120	178.460	7293.42	2484.78	-2303.37	-1045.54	40°07'24.543"N	104°45'54.524"W	1.31	
9790.00	88.720	178.680	7294.27	2565.89	-2387.34	-1043.44	40°07'23.713"N	104°45'54.497"W	1.69	
9875.00	88.300	179.870	7296.48	2648.21	-2472.30	-1042.37	40°07'22.873"N	104°45'54.483"W	1.48	
9958.00	88.890	179.680	7298.51	2728.78	-2555.27	-1042.04	40°07'22.053"N	104°45'54.479"W	0.75	
10044.00	89.660	179.280	7299.60	2812.17	-2641.26	-1041.26	40°07'21.204"N	104°45'54.469"W	1.01	
10129.00	89.660	180.060	7300.11	2894.66	-2726.26	-1040.77	40°07'20.364"N	104°45'54.462"W	0.92	
10214.00	90.590	179.260	7299.92	2977.15	-2811.25	-1040.27	40°07'19.524"N	104°45'54.456"W	1.44	
10300.00	89.140	179.370	7300.12	3060.48	-2897.25	-1039.24	40°07'18.674"N	104°45'54.443"W	1.69	
10385.00	88.640	181.090	7301.77	3143.15	-2982.23	-1039.58	40°07'17.834"N	104°45'54.447"W	2.11	
10470.00	90.650	180.410	7302.30	3226.01	-3067.21	-1040.69	40°07'16.994"N	104°45'54.461"W	2.50	
10555.00	91.260	180.370	7300.88	3308.74	-3152.20	-1041.27	40°07'16.154"N	104°45'54.469"W	0.72	
10641.00	89.660	179.850	7300.19	3392.36	-3238.19	-1041.44	40°07'15.305"N	104°45'54.471"W	1.96	
10726.00	90.180	180.310	7300.31	3475.00	-3323.19	-1041.56	40°07'14.465"N	104°45'54.472"W	0.82	
10811.00	89.230	181.630	7300.75	3557.93	-3408.18	-1042.99	40°07'13.625"N	104°45'54.491"W	1.91	
10896.00	89.510	179.970	7301.68	3640.80	-3493.16	-1044.18	40°07'12.785"N	104°45'54.506"W	1.98	
10982.00	89.780	180.800	7302.21	3724.52	-3579.15	-1044.76	40°07'11.935"N	104°45'54.513"W	1.01	
11067.00	89.660	180.090	7302.63	3807.28	-3664.15	-1045.42	40°07'11.095"N	104°45'54.522"W	0.85	
11152.00	89.850	181.330	7302.99	3890.13	-3749.14	-1046.47	40°07'10.255"N	104°45'54.535"W	1.48	
11237.00	90.490	181.490	7302.74	3973.21	-3834.11	-1048.56	40°07'09.416"N	104°45'54.562"W	0.78	
11323.00	88.180	180.970	7303.74	4057.19	-3920.08	-1050.41	40°07'08.566"N	104°45'54.586"W	2.75	
11408.00	87.020	179.930	7307.30	4139.88	-4005.00	-1051.08	40°07'07.727"N	104°45'54.594"W	1.83	
11493.00	87.840	179.910	7311.11	4222.38	-4089.92	-1050.96	40°07'06.888"N	104°45'54.593"W	0.96	
11578.00	87.440	178.990	7314.61	4304.73	-4174.84	-1050.14	40°07'06.049"N	104°45'54.582"W	1.18	
11664.00	87.320	179.150	7318.54	4387.88	-4260.74	-1048.75	40°07'05.200"N	104°45'54.564"W	0.23	
11741.00	86.890	177.320	7322.43	4462.03	-4337.60	-1046.38	40°07'04.440"N	104°45'54.534"W	2.44	Last BHI MWD Survey
11810.00	86.890	177.320	7326.17	4528.16	-4406.42	-1043.16	40°07'03.760"N	104°45'54.492"W	0.00	Projection to Bit

HOLE & CASING SECTIONS - Ref Wellbore: GOBBLER 36N-W22HZ AWP Ref Wellpath: GOBBLER 36N-W22HZ AWP

String/Diameter	Start MD [ft]	End MD [ft]	Interval [ft]	Start TVD [ft]	End TVD [ft]	Start N/S [ft]	Start E/W [ft]	End N/S [ft]	End E/W [ft]
13.5in Open Hole	17.00	1057.00	1040.00	17.00	1056.61	0.00	0.00	19.36	-10.25
9.625in Casing Surface	17.00	1057.00	1040.00	17.00	1056.61	0.00	0.00	19.36	-10.25
8.75in Open Hole	1057.00	7847.00	6790.00	1056.61	7296.03	19.36	-10.25	-444.79	-1046.90
7in Casing Intermediate	17.00	7837.00	7820.00	17.00	7295.78	0.00	0.00	-434.79	-1047.19
6.125in Open Hole	7837.00	11810.00	3973.00	7295.78	7326.17	-434.79	-1047.19	-4406.42	-1043.16



Actual Wellpath Report

GOBBLER 36N-W22HZ AWP

Page 5 of 6



REFERENCE WELLPATH IDENTIFICATION

Operator	KERR-MCGEE OIL & GAS ONSHORE LP	Slot	SLOT#24 GOBBLER 36N-W22HZ (400'FNL & 2100'FEL, SEC.22)
Area	COLORADO	Well	GOBBLER 36N-W22HZ
Field	WELD COUNTY (KERR MCGEE)	Wellbore	GOBBLER 36N-W22HZ AWP
Facility	SEC.22-T2N-R66W		

TARGETS

Name	MD [ft]	TVD [ft]	North [ft]	East [ft]	Grid East [US ft]	Grid North [US ft]	Latitude	Longitude	Shape
AM SPRAGUE A #1		0.00	-1599.11	-2534.21	3204002.56	1289372.45	40°07'31.501"N	104°46'13.688"W	circle
GOBBLER SECTION 22		0.00	0.02	-0.02	3206523.24	1290992.56	40°07'47.305"N	104°45'41.065"W	polygon
GOBBLER 36N-W22HZ BHL ON PLAT (460'FSL & 2129'FWL,SEC.22) REV-1		7290.00	-4412.66	-1068.96	3205491.13	1286571.32	40°07'03.698"N	104°45'54.824"W	point
GOBBLER HARDLINES (460' SETBACKS)		7400.00	0.02	-0.02	3206523.24	1290992.56	40°07'47.305"N	104°45'41.065"W	polygon

WELLPATH COMPOSITION - Ref Wellbore: GOBBLER 36N-W22HZ AWP Ref Wellpath: GOBBLER 36N-W22HZ AWP

Start MD [ft]	End MD [ft]	Positional Uncertainty Model	Log Name/Comment	Wellbore
17.00	1020.00	NaviTrak (Standard)	SURFACE SURVEYS <50-1020>	GOBBLER 36N-W22HZ AWP
1020.00	7792.00	NaviTrak (Standard)	BHI MWD SURVEYS 8 3/4" HOLE <1069-7792>	GOBBLER 36N-W22HZ AWP
7792.00	11741.00	NaviTrak (Standard)	BHI MWD SURVEYS 6 1/8" HOLE <7837-11741>	GOBBLER 36N-W22HZ AWP
11741.00	11810.00	Blind Drilling (std)	Projection to bit	GOBBLER 36N-W22HZ AWP



Actual Wellpath Report

GOBBLER 36N-W22HZ AWP

Page 6 of 6



REFERENCE WELLPATH IDENTIFICATION

Operator	KERR-MCGEE OIL & GAS ONSHORE LP	Slot	SLOT#24 GOBBLER 36N-W22HZ (400'FNL & 2100'FEL, SEC.22)
Area	COLORADO	Well	GOBBLER 36N-W22HZ
Field	WELD COUNTY (KERR MCGEE)	Wellbore	GOBBLER 36N-W22HZ AWP
Facility	SEC.22-T2N-R66W		

WELLPATH COMMENTS

MD [ft]	Inclination [°]	Azimuth [°]	TVD [ft]	Comment
17.00	0.000	291.700	17.00	Tie-On
50.00	0.300	291.700	50.00	Begin Surface Surveys
1020.00	3.600	345.900	1019.68	Tie-Into Surface Surveys
1069.00	3.340	348.960	1068.59	Begin BHI MWD Surveys
7837.00	88.580	178.380	7295.78	7" Casing Point
11741.00	86.890	177.320	7322.43	Last BHI MWD Survey
11810.00	86.890	177.320	7326.17	Projection to Bit