

The Road to Excellence Starts with Safety

Sold To #: 300721	Ship To #: 2943362	Quote #:	Sales Order #: 9715192
Customer: WPX ENERGY ROCKY MOUNTAIN LLC-EBUS	Customer Rep: WILSON, W.C		
Well Name: RWF	Well #: 34-27	API/UWI #: 05-045-19832	
Field: Rulison	City (SAP): RIFLE	County/Parish: Garfield	State: Colorado
Lat: N 39.49 deg. OR N 39 deg. 29 min. 24.839 secs.	Long: W 107.872 deg. OR W -108 deg. 7 min. 39.155 secs.		
Contractor: NABORS 577	Rig/Platform Name/Num: NABORS 577		
Job Purpose: Cement Surface Casing			
Well Type: Development Well	Job Type: Cement Surface Casing		
Sales Person: MAYO, MARK	Srv Supervisor: YOUNG, JEREMY	MBU ID Emp #: 418013	

Job Personnel

HES Emp Name	Exp Hrs	Emp #	HES Emp Name	Exp Hrs	Emp #	HES Emp Name	Exp Hrs	Emp #
GRAGERT, JEFFREY Robert	7.5	528091	SIMINEO, JEROD M	7.5	479954	WALPOLE, DARREN Livingston	7.5	485294
YOUNG, JEREMY R	7.5	418013						

Equipment

HES Unit #	Distance-1 way	HES Unit #	Distance-1 way	HES Unit #	Distance-1 way	HES Unit #	Distance-1 way
10551730C	60 mile	10722398	60 mile	11139330	60 mile	11259881	60 mile
11808833	60 mile						

Job Hours

Date	On Location Hours	Operating Hours	Date	On Location Hours	Operating Hours	Date	On Location Hours	Operating Hours
08/17/2012	7.5	3						

TOTAL Total is the sum of each column separately

Job

Job Times

Formation Name	Formation Depth (MD)	Top	Bottom	Called Out	Date	Time	Time Zone
Form Type			BHST	On Location	17 - Aug - 2012	00:15	MST
Job depth MD	1102.6 ft		Job Depth TVD	Job Started	17 - Aug - 2012	04:00	MST
Water Depth			Wk Ht Above Floor	Job Completed	17 - Aug - 2012	08:44	MST
Perforation Depth (MD)	From		To	Job Completed	17 - Aug - 2012	09:48	MST
				Departed Loc	17 - Aug - 2012	11:30	MST

Well Data

Description	New / Used	Max pressure psig	Size in	ID in	Weight lbm/ft	Thread	Grade	Top MD ft	Bottom MD ft	Top TVD ft	Bottom TVD ft
13 1/2" OPEN HOLE				13.5				.	1115.		
9 5/8" SURFACE CASING	Unknown		9.625	9.001	32.3		H-40	.	1102.6		

Sales/Rental/3rd Party (HES)

Description	Qty	Qty uom	Depth	Supplier
PLUG,CMTG,TOP,9 5/8,HWE,8.16 MIN/9.06 MA	1	EA		

Tools and Accessories

Type	Size	Qty	Make	Depth	Type	Size	Qty	Make	Depth	Type	Size	Qty	Make
Guide Shoe					Packer					Top Plug	9.625	1	HES
Float Shoe					Bridge Plug					Bottom Plug			
Float Collar					Retainer					SSR plug set			
Insert Float										Plug Container	9.625	1	HES
Stage Tool										Centralizers			

Miscellaneous Materials

Gelling Agt	Conc	Surfactant	Conc	Acid Type	Qty	Conc	%
Treatment Fld	Conc	Inhibitor	Conc	Sand Type	Size	Qty	

Fluid Data

Stage/Plug #: 1

HALLIBURTON***Cementing Job Summary***

Fluid #	Stage Type	Fluid Name	Qty	Qty uom	Mixing Density lbm/gal	Yield ft ³ /sk	Mix Fluid Gal/sk	Rate bbl/min	Total Mix Fluid Gal/sk
1	Fresh Water	FRESH WATER	20.00	bbl	8.33	.0	.0	4	
2	Lead Cement	VERSACEM (TM) SYSTEM (452010)	115.0	sacks	12.3	2.38	13.75	6	13.75
3	Tail Cement	VERSACEM (TM) SYSTEM (452010)	160.0	sacks	12.8	2.11	11.75	6	11.75
4	Displacement Fluid	FRESH WATER	83.30	bbl	8.34	.0	.0	10	
Calculated Values		Pressures		Volumes					
Displacement	83.3	Shut In: Instant		Lost Returns	NO	Cement Slurry	108.8	Pad	
Top Of Cement	SURFACE	5 Min		Cement Returns	18	Actual Displacement	83.3	Treatment	
Frac Gradient		15 Min		Spacers	20	Load and Breakdown		Total Job	212.1
Rates									
Circulating		Mixing	6	Displacement	10	Avg. Job	8		
Cement Left In Pipe	Amount	43.55 ft	Reason	Shoe Joint					
Frac Ring # 1 @	ID	Frac ring # 2 @	ID	Frac Ring # 3 @	ID	Frac Ring # 4 @	ID		
The Information Stated Herein Is Correct				Customer Representative Signature					

The Road to Excellence Starts with Safety

Sold To #: 300721	Ship To #: 2943362	Quote #:	Sales Order #: 9715192
Customer: WPX ENERGY ROCKY MOUNTAIN LLC-EBUS	Customer Rep: WILSON, W.C		
Well Name: RWF	Well #: 34-27	API/UWI #: 05-045-19832	
Field: Rulison	City (SAP): RIFLE	County/Parish: Garfield	State: Colorado
Legal Description:			
Lat: N 39.49 deg. OR N 39 deg. 29 min. 24.839 secs.		Long: W 107.872 deg. OR W -108 deg. 7 min. 39.155 secs.	
Contractor: NABORS 577	Rig/Platform Name/Num: NABORS 577		
Job Purpose: Cement Surface Casing	Ticket Amount:		
Well Type: Development Well	Job Type: Cement Surface Casing		
Sales Person: MAYO, MARK	Srvc Supervisor: YOUNG, JEREMY	MBU ID Emp #: 418013	

Activity Description	Date/Time	Cht #	Rate bbl/ min	Volume bbl		Pressure psig		Comments
				Stage	Total	Tubing	Casing	
Call Out	08/17/2012 00:15							
Pre-Convoy Safety Meeting	08/17/2012 02:20							WITH ALL HES PERSONNEL
Crew Leave Yard	08/17/2012 02:30							
Arrive At Loc	08/17/2012 04:00							RIG WAS TRIPPING OUT WITH DRILL PIPE UPON HES ARRIVAL
Assessment Of Location Safety Meeting	08/17/2012 07:00							WITH ALL HES PERSONNEL
Other	08/17/2012 07:10							SPOT EQUIPMENT
Pre-Rig Up Safety Meeting	08/17/2012 07:20							WITH ALL HES PERSONNEL
Rig-Up Equipment	08/17/2012 07:30							
Pre-Job Safety Meeting	08/17/2012 08:30							WITH ALL PERSONNEL ON LOCATION
Start Job	08/17/2012 08:44							TD 1115 FT, TP 1102.6 FT, SHOE 43.55 FT, HOLE 13 1/2 IN, MUD WT 10.4 PPG, CSG 9 5/8 IN 32.3 LB/FT H-40
Other	08/17/2012 08:45		2	2			66.0	FILL LINES WITH FRESH WATER
Test Lines	08/17/2012 08:47							TEST LINES TO 3000 PSI. PRESSURE HOLDING
Pump Spacer 1	08/17/2012 08:52		4	20			150.0	FRESH WATER
Pump Lead Cement	08/17/2012 09:01		6	48.7			250.0	115 SKS AT 12.3 PPG, 2.38 FT3/SK, 13.75 GAL/SK
Activity Description	Date/Time	Cht	Rate bbl/ min	Volume bbl		Pressure psig		Comments

Sold To # : 300721

Ship To # :2943362

Quote # :

Sales Order # :

9715192

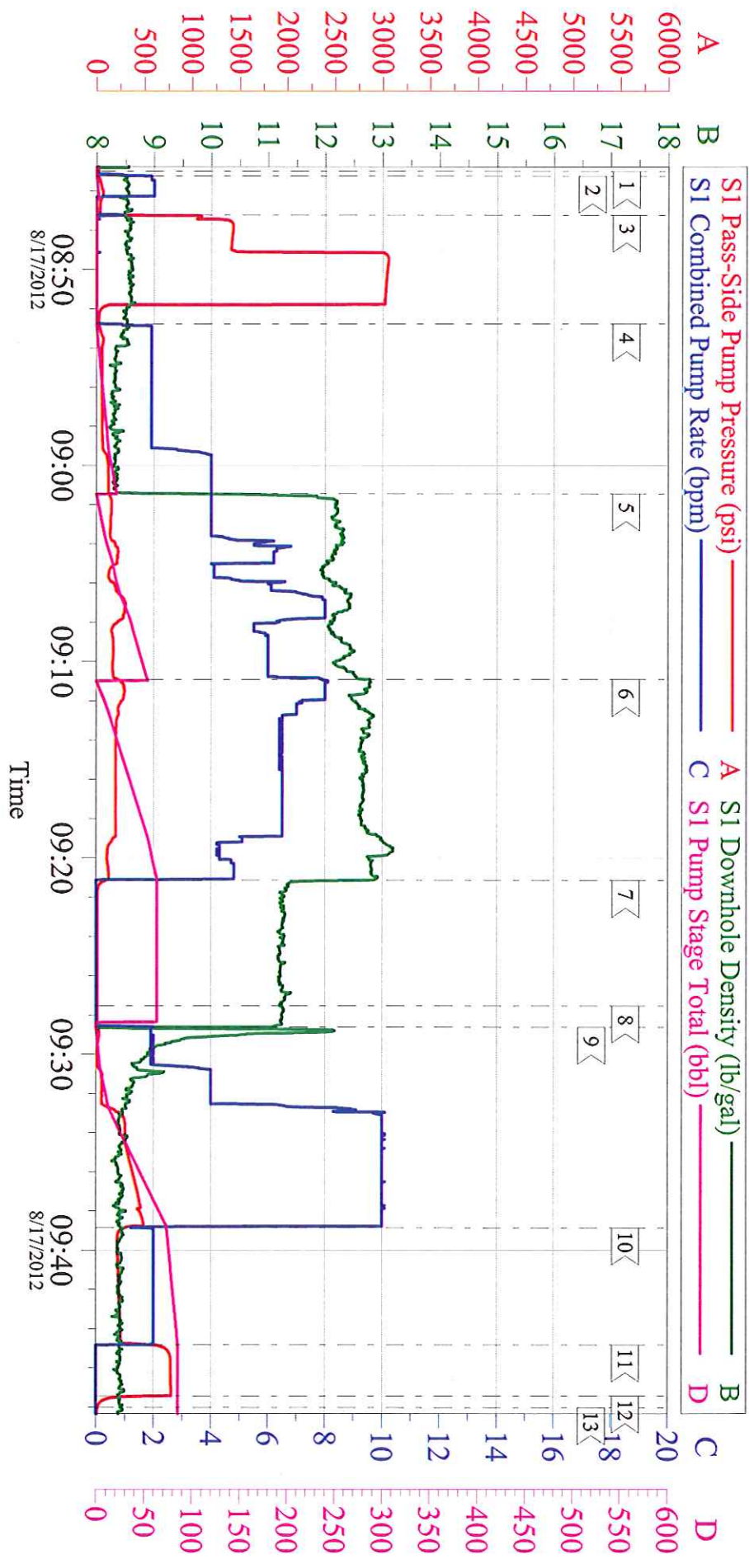
SUMMIT Version: 7.3.0039

Wednesday, September 26, 2012 12:40:00

		#		Stage	Total	Tubing	Casing	
Pump Tail Cement	08/17/2012 09:10		6	60.1			250.0	160 SKS AT 12.8 PPG, 2.11 FT3/SK, 11.75 GAL/SK
Shutdown	08/17/2012 09:21							
Drop Top Plug	08/17/2012 09:27							PLUG LAUNCHED
Pump Displacement	08/17/2012 09:28		10	73.3			523.0	FRESH WATER
Slow Rate	08/17/2012 09:38		2	10			260.0	SLOW RATE 10 BBLS PRIOR TO CALCULATED DISPLACEMENT
Bump Plug	08/17/2012 09:44		2		83.3		775.0	PLUG BUMPED
Check Floats	08/17/2012 09:47							FLOATS HOLDING. RETURNED 0.5 BBL H2O TO PUMP
End Job	08/17/2012 09:48							PIPE STATIC DURING JOB. GOOD CIRCULATION THROUGHOUT JOB. HES RETURNED 18 BBL CEMENT TO SURFACE
Pre-Rig Down Safety Meeting	08/17/2012 09:55							WITH ALL HES PERSONNEL
Rig-Down Equipment	08/17/2012 10:00							
Pre-Convoy Safety Meeting	08/17/2012 11:20							WITH ALL HES PERSONNEL
Crew Leave Location	08/17/2012 11:30							
Comment	08/17/2012 11:31							THANK YOU FOR USING HALLIBURTON CEMENT DEPARTMENT. JEREMY YOUNG AND CREW.

WPX - RWF 34-27

9 5/8 SURFACE



Local Event Log

1 < START JOB	08:44:59	2 < FILL LINES	08:45:13	3 < TEST LINES	08:47:13
4 < PUMP H2O SPACER	08:52:46	5 < PUMP LEAD CEMENT	09:01:26	6 < PUMP TAIL CEMENT	09:10:54
7 < SHUTDOWN	09:21:09	8 < DROP TOP PLUG	09:27:32	9 < PUMP DISPLACEMENT	09:28:37
10 < SLOW RATE	09:38:52	11 < BUMP PLUG	09:44:50	12 < CHECK FLOATS	09:47:25
13 < END JOB	09:48:01				

Customer: WPX	Job Date: 17-Aug-2012	Sales Order #: 9715192
Well Description: RWF 34-27	Job Type: SURFACE	ADC Used: YES
Company Rep: W.C. WILSON	Cement Supervisor: JEREMY YOUNG	Elite #2: JEROD SIMINEO

OptiCem v6.4.10
17-Aug-12 09:58

WPX - RWF 34-27 9 5/8 SURFACE

