

WPX Energy Rocky Mtn LLC

RWF 331-34

API #05-045-19844-00

448' FSL x 2157' FEL - SHL

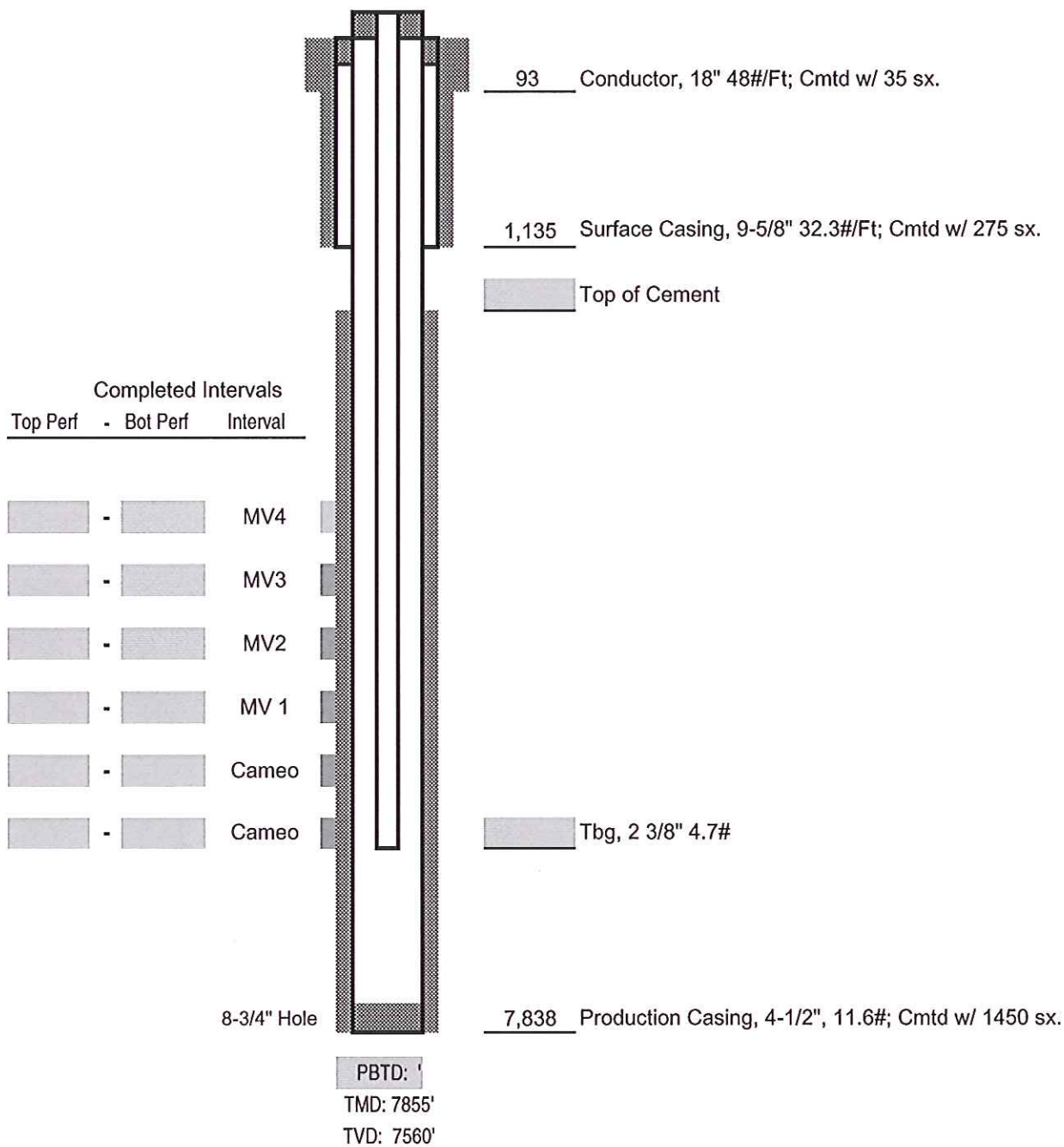
(SWSE) Sec. 27-T6S-R94W

1154' FNL x 2151' FEL - BHL

(NWNE) Sec. 34-T6S-T94W

Garfield County, Colorado

PRELIMINARY



WAITING ON COMPLETION

Not to Scale