



Cementing Job Summary

The Road to Excellence Starts with Safety

Sold To #: 300721	Ship To #: 2935509	Quote #:	Sales Order #: 9619812
Customer: WPX ENERGY ROCKY MOUNTAIN LLC-EBUS		Customer Rep: Towers, Ron	
Well Name: RWF	Well #: 11-34	API/UWI #: 05-045-19835	
Field: RULISON	City (SAP): RIFLE	County/Parish: Garfield	State: Colorado
Lat: N 39.49 deg. OR N 39 deg. 29 min. 24.742 secs.		Long: W 107.872 deg. OR W -108 deg. 7 min. 39.011 secs.	
Contractor: NABORS 577	Rig/Platform Name/Num: NABORS 577		
Job Purpose: Cement Surface Casing			
Well Type: Development Well		Job Type: Cement Surface Casing	
Sales Person: MAYO, MARK	Srvs Supervisor: KUKUS, CRAIG	MBU ID Emp #: 369124	

Job Personnel

HES Emp Name	Exp Hrs	Emp #	HES Emp Name	Exp Hrs	Emp #	HES Emp Name	Exp Hrs	Emp #
BORSZICH, STEPHEN A	17	412388	EICKHOFF, ROBERT Edward	17	495311	KUKUS, CRAIG A	17	369124
SPARKS, CLIFFORD Paul	17	502476						

Equipment

HES Unit #	Distance-1 way	HES Unit #	Distance-1 way	HES Unit #	Distance-1 way	HES Unit #	Distance-1 way
10001431	60 mile	10551730C	60 mile	10784064	60 mile	10969711	60 mile
11006314	60 mile	11583928	60 mile	11808841	60 mile		

Job Hours

Date	On Location Hours	Operating Hours	Date	On Location Hours	Operating Hours	Date	On Location Hours	Operating Hours
7/12/12	7	0	7/13/12	10	3			

TOTAL		Total is the sum of each column separately
-------	--	--

Job

Job Times

Formation Name							Date	Time	Time Zone
Formation Depth (MD)	Top			Bottom		Called Out	12 - Jul - 2012	11:30	MST
Form Type			BHST			On Location	12 - Jul - 2012	17:00	MST
Job depth MD	1740. m		Job Depth TVD		1740. m	Job Started	13 - Jul - 2012	08:47	MST
Water Depth			Wk Ht Above Floor		4. m	Job Completed	13 - Jul - 2012	09:55	MST
Perforation Depth (MD)	From			To		Departed Loc	13 - Jul - 2012	11:15	MST

Well Data

Description	New / Used	Max pressure MPa	Size mm	ID mm	Weight kg/m	Thread	Grade	Top MD m	Bottom MD m	Top TVD m	Bottom TVD m
-------------	------------	------------------	---------	-------	-------------	--------	-------	----------	-------------	-----------	--------------

Sales/Rental/3rd Party (HES)

Description	Qty	Qty uom	Depth	Supplier
PLUG,CMTG,TOP,9 5/8,HWE,8.16 MIN/9.06 MA	1	EA		

Tools and Accessories

Type	Size	Qty	Make	Depth	Type	Size	Qty	Make	Depth	Type	Size	Qty	Make
Guide Shoe					Packer					Top Plug	9 5/8	1	HES
Float Shoe					Bridge Plug					Bottom Plug			
Float Collar					Retainer					SWEGE	9 5/8	1	HES
Insert Float										Plug Container	9 5/8	1	HES
Stage Tool										Centralizers			

Miscellaneous Materials

Gelling Agt	Conc	Surfactant	Conc	Acid Type	Qty	Conc	%
Treatment Fld	Conc	Inhibitor	Conc	Sand Type	Size	Qty	

Fluid Data

Stage/Plug #: 1

Fluid #	Stage Type	Fluid Name	Qty	Qty bbl	Mixing Density ppg	Yield cu/ft	Mix Fluid gal/sks	Rate bbl/min	Total Mix Fluid m3/ tonne
---------	------------	------------	-----	---------	-----------------------	----------------	----------------------	-----------------	---------------------------------

Stage/Plug #: 1									
Fluid #	Stage Type	Fluid Name	Qty	Qty bbl	Mixing Density ppg	Yield cu/ft	Mix Fluid gal/sks	Rate bbl/min	Total Mix Fluid m3/tonne
1	Fresh Water		20.00	bbl	8.33	.0	.0	4	
2	Lead Cement	VERSACEM (TM) SYSTEM (452010)	265.0	sacks	12.3	2.38	13.75	8	13.75
3	Tail Cement	VERSACEM (TM) SYSTEM (452010)	160.0	sacks	12.8	2.11	11.75	8	11.75
4	Displacement Fluid		132.00	bbl	8.34	.0	.0	10	
Calculated Values		Pressures		Volumes					
Displacement	132	Shut In: Instant		Lost Returns	0	Cement Slurry	172	Pad	
Top Of Cement	SURFACE	5 Min		Cement Returns	29	Actual Displacement	133	Treatment	
Frac Gradient		15 Min		Spacers	20	Load and Breakdown		Total Job	324
Rates									
Circulating	RIG	Mixing	8	Displacement	10	Avg. Job	9		
Cement Left In Pipe	Amount	43 ft	Reason	Shoe Joint					
Frac Ring # 1 @	ID	Frac ring # 2 @	ID	Frac Ring # 3 @	ID	Frac Ring # 4 @	ID		
The Information Stated Herein Is Correct				Customer Representative Signature					

The Road to Excellence Starts with Safety

Sold To #: 300721	Ship To #: 2935509	Quote #:	Sales Order #: 9619812
Customer: WPX ENERGY ROCKY MOUNTAIN LLC-EBUS	Customer Rep: Towers, Ron		
Well Name: RWF	Well #: 11-34	API/UWI #: 05-045-19835	
Field: RULISON	City (SAP): RIFLE	County/Parish: Garfield	State: Colorado
Legal Description:			
Lat: N 39.49 deg. OR N 39 deg. 29 min. 24.742 secs.		Long: W 107.872 deg. OR W -108 deg. 7 min. 39.011 secs.	
Contractor: NABORS 577	Rig/Platform Name/Num: NABORS 577		
Job Purpose: Cement Surface Casing	Ticket Amount:		
Well Type: Development Well	Job Type: Cement Surface Casing		
Sales Person: MAYO, MARK	Srv Supervisor: KUKUS, CRAIG	MBU ID Emp #: 369124	

Activity Description	Date/Time	Cht #	Rate bbl/ min	Volume bbl		Pressure psi		Comments
				Stage	Total	Tubing	Casing	
Call Out	07/12/2012 11:30							
Depart Yard Safety Meeting	07/12/2012 15:00							SAFETY MEETING INVOLVING THE ENTIRE CMT CREW
Arrive At Loc	07/12/2012 17:00							RIG CIRCULATING ON D/P
Assessment Of Location Safety Meeting	07/12/2012 17:10							ASSESSMENT OF LOCATION INVOLVING THE ENTIRE CMT CREW
Circulate Well	07/13/2012 07:30							RIG
Pre-Rig Up Safety Meeting	07/13/2012 07:55							SAFETY MEETING INVOLVING THE ENTIRE CMT CREW
Rig-Up Equipment	07/13/2012 08:00							RIG UP TO STAND PIPE TO FLOOR / RIG UP WATER TO DAY TANK AND UP RIGHT
Pre-Job Safety Meeting	07/13/2012 08:30							SAFETY MEETING INVOLVING EVERYONE ON LOCATION
Start Job	07/13/2012 08:47							TD 1740 FT TP 1724 FT SJ 43 FT OH 13.5 IN PIPE 9 5/8 IN 32.2 # MUD WT 9.7#
Other	07/13/2012 08:48		2	2			63.0	FILL LINES WITH FRESH WATER
Pressure Test	07/13/2012 08:50		0.5			4000.0		PRESSURE TEST GOOD
Pump Spacer 1	07/13/2012 08:55		4	20			126.0	FRESH WATER SPACER
Activity Description	Date/Time	Cht	Rate bbl/ min	Volume bbl		Pressure psi		Comments

Sold To #: 300721

Ship To #: 2935509

Quote #:

Sales Order #:

9619812

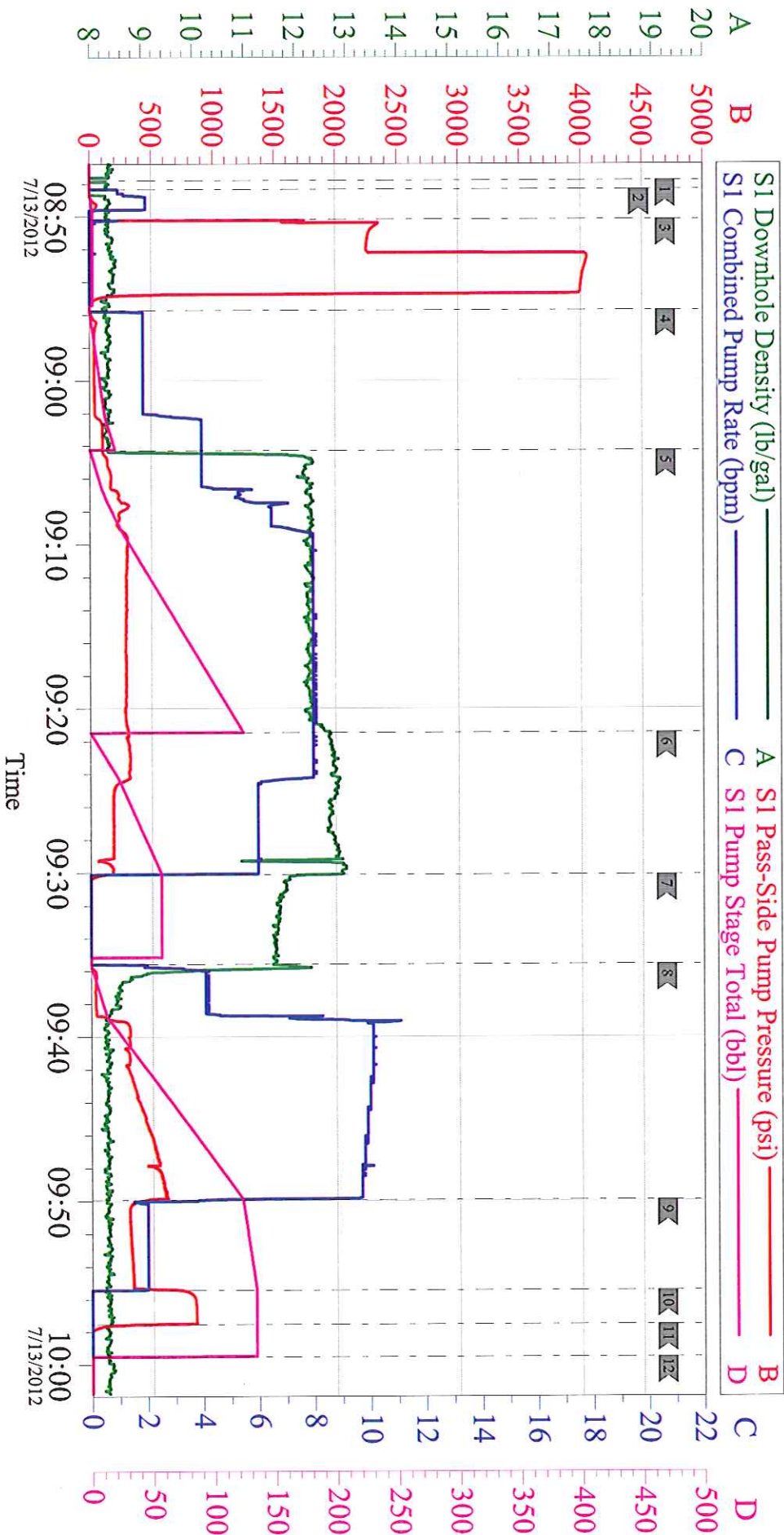
SUMMIT Version: 7.3.0030

Tuesday, July 24, 2012 01:56:00

Cementing Job Log

		#		Stage	Total	Tubing	Casing	
Pump Lead Cement	07/13/2012 09:04		8	112			325.0	PUMP 265 SKS LEAD CEMENT AT 12.3 PPG 2.38 Y 13.75 GAL/SK
Pump Tail Cement	07/13/2012 09:21		8	60.1			342.0	PUMP 160 SKS TAIL CEMENT AT 12.8 PPG 2.11 Y 11.75 GAL/SKS
Shutdown	07/13/2012 09:30							SHUT DOWN / READY TUB FOR WASH ON TOP OF PLUG
Drop Top Plug	07/13/2012 09:35							PLUG LEFT THE PLUG CONTAINER
Pump Displacement	07/13/2012 09:35		10	132			637.0	PUMP H20 DISPLACEMENT/ WASH ON TOP OF PLUG
Slow Rate	07/13/2012 09:49		2	122			360.0	SLOW RATE TO 2 BBL MIN LAST 10BBLs
Bump Plug	07/13/2012 09:55		2	132			876.0	PLUG LANDED AT 370 PSI
Check Floats	07/13/2012 09:57							FLOATS HELD / GOT 3/4BBLBACK TO TANKS
End Job	07/13/2012 09:59							RIG RECEPATED THRU OUT THE JOB APPROX 8 FT STROKES AND FULL RETURNS THRU OUT THE JOB / CEMENT TO SURFACE TOTAL 29 BBLs
Pre-Rig Down Safety Meeting	07/13/2012 10:02							SAFETY MEETING INVOLVING THE ENTIRE CMT CREW
Rig-Down Equipment	07/13/2012 10:15							BLOW DOWN EQUIPMENT AND WASH UP / RIG DOWN RACK UP
Safety Meeting - Departing Location	07/13/2012 11:00							SAFETY MEETING INVOLVING THE ENTIRE CMT CREW
Comment	07/13/2012 11:15							THANK YOU FOR USING HALLIBURTON, CRAIG KUKUS AND CREW

WXP ENERGY ROCKY MOUNTAIN RWF 11-34 SURFACE 9 5/8 NABORS 577



Local Event Log

1 START JOB	08:47:48	2 PRIME LINES	08:48:20	3 PRESSURE TEST LINES	08:50:11
4 PUMP H2O SPACER	08:55:43	5 PUMP LEAD CEMENT	09:04:17	6 PUMP TAIL CEMENT	09:21:28
7 SHUT DOWN / END CEMENT	09:30:07	8 DROPPUG / PUMP H2O DISPLACEMENT	09:35:36	9 SLOW RATE	09:49:56
10 BUMP PLUG	09:55:26	11 CHECK FLOATS	09:57:32	12 END JOB	09:59:31

Customer:
Well Description:
Company Rep:

Job Date: 13-Jul-2012
Job Type:
Cement Supervisor:

Sales Order #: 9619812
ADC Used:
Elite #/Operator:

HALLIBURTON
OptiCem v6.4.8
13-Jul-12 10:22