

**HALLIBURTON**

---

**WILLIAMS PRODUCTION RMT INC - EBUS**

---

**SP 323-13  
PARACHUTE  
Garfield County , Colorado**

**Cement Surface Casing**  
**19-Sep-2011**

**Post Job Report**

## The Road to Excellence Starts with Safety

Sold To #: 300721	Ship To #: 2878437	Quote #:	Sales Order #: 8470626
Customer: WILLIAMS PRODUCTION RMT INC - EBUS	Customer Rep: Shults, Mike		
Well Name: SP	Well #: 323-13	API/UWI #: 05-045-20418	
Field: PARACHUTE	City (SAP): PARACHUTE	County/Parish: Garfield	State: Colorado
Lat: N 39.435 deg. OR N 39 deg. 26 min. 6.083 secs.	Long: W 107.955 deg. OR W -108 deg. 2 min. 42.67 secs.		
Contractor: H&P Drilling	Rig/Platform Name/Num: H&P 271		
Job Purpose: Cement Surface Casing			
Well Type: Development Well	Job Type: Cement Surface Casing		
Sales Person: KOHL, KYLE	Srv Supervisor: KUKUS, CRAIG	MBU ID Emp #: 369124	

## Job Personnel

HES Emp Name	Exp Hrs	Emp #	HES Emp Name	Exp Hrs	Emp #	HES Emp Name	Exp Hrs	Emp #
GOWEN, WESLEY M	6	496205	KUKUS, CRAIG A	6	369124	SMITH, DUSTIN Michael	6	418015
WYCKOFF, RYAN Scott	6	476117						

## Equipment

HES Unit #	Distance-1 way	HES Unit #	Distance-1 way	HES Unit #	Distance-1 way	HES Unit #	Distance-1 way
10011429	60 mile	10713212	60 mile	10829469	60 mile	10872429	60 mile
10897849	60 mile	11360883	60 mile				

## Job Hours

Date	On Location Hours	Operating Hours	Date	On Location Hours	Operating Hours	Date	On Location Hours	Operating Hours
9/19/11	6	2.5						

**TOTAL** Total is the sum of each column separately

## Job

Formation Name	Top	Bottom	Called Out	Date	Time	Time Zone
Formation Depth (MD)			On Location	19 - Sep - 2011	10:30	MST
Form Type		BHST	Job Started	19 - Sep - 2011	14:17	MST
Job depth MD	1594. ft	Job Depth TVD	1594. ft	Job Completed	19 - Sep - 2011	15:25
Water Depth		Wk Ht Above Floor	4. ft	Departed Loc	19 - Sep - 2011	16:30
Perforation Depth (MD)	From	To				

## Well Data

Description	New / Used	Max pressure psig	Size in	ID in	Weight lbm/ft	Thread	Grade	Top MD ft	Bottom MD ft	Top TVD ft	Bottom TVD ft
13 1/2" Open Hole				13.5				.	1510.		
9 5/8" Surface Casing	New		9.625	9.001	32.3		H-40	.	1510.		

Sales/Rental/3<sup>rd</sup> Party (HES)

Description	Qty	Qty uom	Depth	Supplier
PLUG,CMTG,TOP,9 5/8,HWE,8.16 MIN/9.06 MA	1	EA		

## Tools and Accessories

Type	Size	Qty	Make	Depth	Type	Size	Qty	Make	Depth	Type	Size	Qty	Make
Guide Shoe					Packer					Top Plug	9 5/8	1	HES
Float Shoe					Bridge Plug					Bottom Plug			
Float Collar					Retainer					SSR plug set			
Insert Float										Plug Container	9 5/8	1	HES
Stage Tool										Centralizers			

## Miscellaneous Materials

Gelling Agt	Conc	Surfactant	Conc	Acid Type	Qty	Conc	%
Treatment Fld	Conc	Inhibitor	Conc	Sand Type	Size	Qty	

## Fluid Data

Stage/Plug #: 1

Fluid #	Stage Type	Fluid Name	Qty	Qty uom	Mixing Density lbm/gal	Yield ft <sup>3</sup> /sk	Mix Fluid Gal/sk	Rate bbl/min	Total Mix Fluid Gal/sk
1	Water Spacer		20.00	bbl	8.34	.0	.0	4	
2	VersaCem Lead Cement	VERSACEM (TM) SYSTEM (452010)	220.0	sacks	12.3	2.38	13.75	6	13.75
	13.75 Gal	FRESH WATER							
3	VersaCem Tail Cement	VERSACEM (TM) SYSTEM (452010)	160.0	sacks	12.8	2.11	11.75	5	11.75
	11.75 Gal	FRESH WATER							
4	Displacement Fluid		121.00	bbl	8.34	.0	.0	10	
<b>Calculated Values</b>		<b>Pressures</b>		<b>Volumes</b>					
Displacement	121	Shut In: Instant		Lost Returns	0	Cement Slurry	154	Pad	
Top Of Cement	SURFACE	5 Min		Cement Returns	25	Actual Displacement	121	Treatment	
Frac Gradient		15 Min		Spacers	20	Load and Breakdown		Total Job	295
<b>Rates</b>									
Circulating	RIG	Mixing	6	Displacement	10	Avg. Job	8		
Cement Left In Pipe	Amount	43.91ft	Reason	Shoe Joint					
Frac Ring # 1 @	ID		Frac ring # 2 @	ID		Frac Ring # 3 @	ID	Frac Ring # 4 @	ID
The Information Stated Herein Is Correct				Customer Representative Signature					

*The Road to Excellence Starts with Safety*

<b>Sold To #:</b> 300721	<b>Ship To #:</b> 2878437	<b>Quote #:</b>	<b>Sales Order #:</b> 8470626
<b>Customer:</b> WILLIAMS PRODUCTION RMT INC - EBUS		<b>Customer Rep:</b> Shults, Mike	
<b>Well Name:</b> SP	<b>Well #:</b> 323-13	<b>API/UWI #:</b> 05-045-20418	
<b>Field:</b> PARACHUTE	<b>City (SAP):</b> PARACHUTE	<b>County/Parish:</b> Garfield	<b>State:</b> Colorado
<b>Legal Description:</b>			
<b>Lat:</b> N 39.435 deg. OR N 39 deg. 26 min. 6.083 secs.		<b>Long:</b> W 107.955 deg. OR W -108 deg. 2 min. 42.67 secs.	
<b>Contractor:</b> H&P Drilling		<b>Rig/Platform Name/Num:</b> H&P 271	
<b>Job Purpose:</b> Cement Surface Casing			<b>Ticket Amount:</b>
<b>Well Type:</b> Development Well		<b>Job Type:</b> Cement Surface Casing	
<b>Sales Person:</b> KOHL, KYLE		<b>Srvc Supervisor:</b> KUKUS, CRAIG	<b>MBU ID Emp #:</b> 369124

Activity Description	Date/Time	Cht #	Rate bbl/min	Volume bbl		Pressure psig		Comments
				Stage	Total	Tubing	Casing	
Call Out	09/19/2011 06:00							
Depart Yard Safety Meeting	09/19/2011 09:00							SAFETY MEETING INVOLVING THE ENTIRE CMT CREW
Arrive At Loc	09/19/2011 10:30							RIG JUST STARTED RUNNING CSG
Assessment Of Location Safety Meeting	09/19/2011 10:40							ASSESSMENT OF LOCATION INVOLVING THE ENTIRE CMT CREW
Pre-Rig Up Safety Meeting	09/19/2011 11:00							SAFETY MEETING INVOLVING THE ENTIRE CMT CREW
Rig-Up Equipment	09/19/2011 11:10							RIG UP TO STAND PIPE AND BOTH WATER UP RIGHTS/DISPLACEMENT WAS CHANGED TO H2O
Circulate Well	09/19/2011 13:30							RIG
Pre-Job Safety Meeting	09/19/2011 14:00							SAFETY MEETING INVOLVING EVERYONE ON LOCATION
Start Job	09/19/2011 14:17							TD 1594 FT TP 1579 FT SJ 43.91 FT OH 13.5 IN PIPE 9 5/8 IN 32.3# MUD WT 9.8
Other	09/19/2011 14:18		2	2			34.0	FILL LINES WITH FRESH WATER
Pressure Test	09/19/2011 14:20		0.5			3500.0		PRESSURE TEST GOOD
Activity Description	Date/Time	Cht	Rate bbl/min	Volume bbl		Pressure psig		Comments

Sold To # : 300721

Ship To # :2878437

Quote # :

Sales Order # :

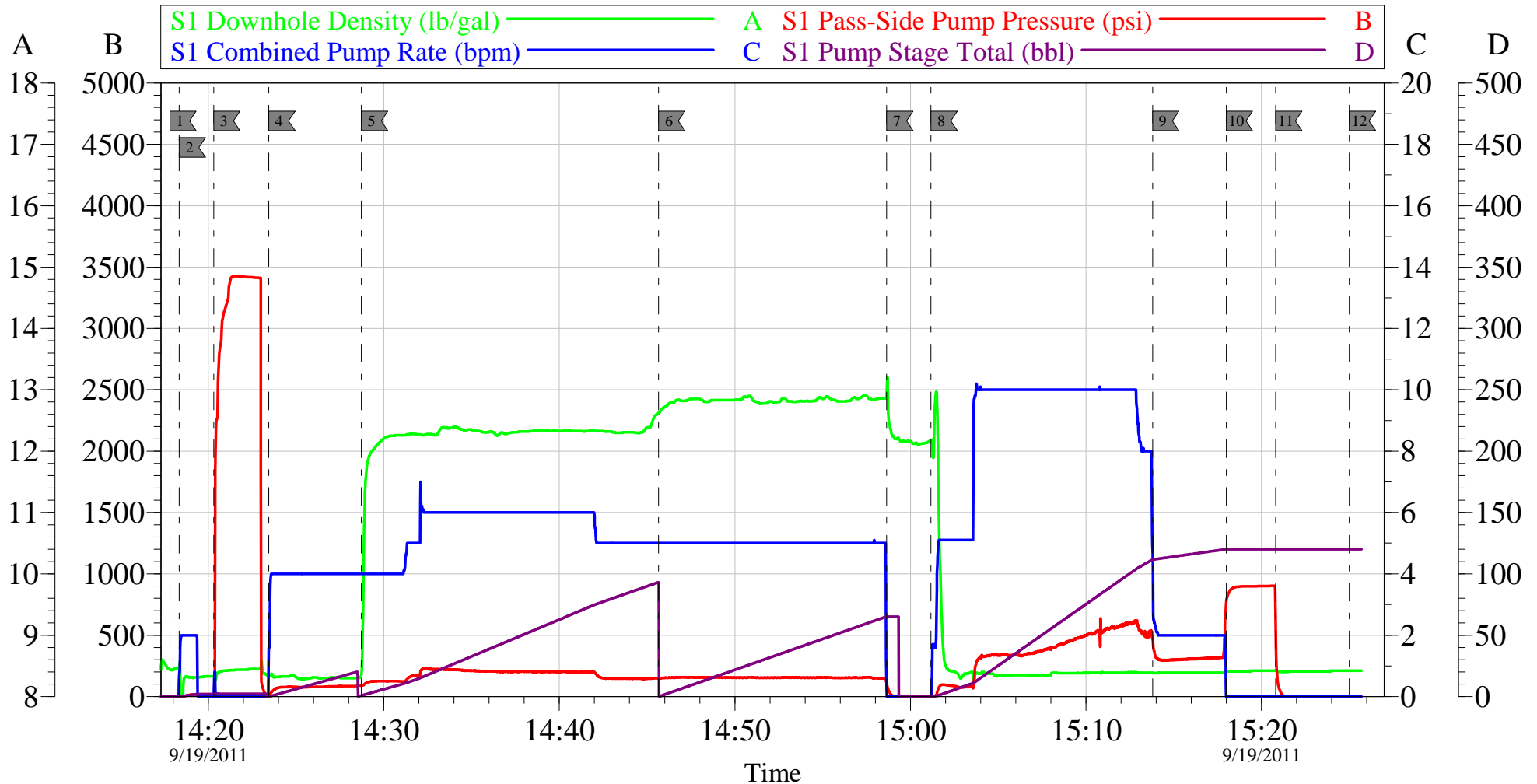
8470626

SUMMIT Version: 7.2.27

Monday, September 19, 2011 04:22:00

		#		Stage	Total	Tubing	Casing	
Pump Spacer 1	09/19/2011 14:23		4	20			100.0	FRESH WATER SPACER
Pump Lead Cement	09/19/2011 14:28		6	93.3			238.0	PUMP 220 SKS LEAD CEMENT AT 12.3 PPG 2.38 Y 13.75 GAL/SK
Pump Tail Cement	09/19/2011 14:45		5	60.1			170.0	PUMP TAIL CEMENT AT 12.8 PPG 2.11 Y 11.75 GAL/SK
Shutdown	09/19/2011 14:58							READY TUB FOR WASH ONTOP OF PLUG
Drop Top Plug	09/19/2011 15:00							PLUG LEFT THE PLUG CONTAINER
Pump Displacement	09/19/2011 15:01		10	120.8			610.0	PUMP H2O DISPLACEMENT
Slow Rate	09/19/2011 15:13		2	110			315.0	SLOW RATE TO 2 BBL MIN LAST 10 BBLS
Bump Plug	09/19/2011 15:18		2	120.8			907.0	PLUG LANDED AT 330 PSI
Check Floats	09/19/2011 15:20							FLOATS HELD / GOT 1/2 BBL BACK TO TANKS
End Job	09/19/2011 15:25							HAD GOOD RETURNS THRU OUT THE JOB / GOT CEMENT TO SURFACE TOTAL 25 BBLS
Pre-Rig Down Safety Meeting	09/19/2011 15:30							SAFETY MEETING INVOLVING THE ENTIRE CMT CREW
Rig-Down Equipment	09/19/2011 15:40							RIG DOWN WASH UP PUMP TO PIT
Safety Meeting - Departing Location	09/19/2011 16:25							SAFETY MEETING INVOLVING THE ENTIRE CMT CREW
Comment	09/19/2011 16:30							THANK YOU FOR USING HALLIBURTON, CRAIG KUKUS AND CREW

# WILLIAMS SURFACE HP 271



Customer: WILLIAMS	Job Date: 19-Sep-2011	Sales Order #: 8470626
Well Description: SP 323-13	Job Type: SURFACE	ADC Used: YES
Company Rep: MIKE SHULTZ	Cement Supervisor: CRAIG KUKUS	Elite #/Operator: E 7 RYAN WYCKOFF

# HALLIBURTON

## Water Analysis Report

Company: WILLIAMS  
Submitted by: CRAIGKUKUS  
Attention: \_\_\_\_\_  
Lease SP  
Well # 323-13

Date: 9/19/2011  
Date Rec.: 9/19/2011  
S.O.# 8470626  
Job Type: SURFACE

Specific Gravity	<i>MAX</i>	
pH	<i>8</i>	<i>8</i>
Potassium (K)	<i>5000</i>	<i>200</i> Mg / L
Calcium (Ca)	<i>500</i>	<i>0</i> Mg / L
Iron (FE2)	<i>300</i>	<i>3</i> Mg / L
Chlorides (Cl)	<i>3000</i>	<i>0</i> Mg / L
Sulfates (SO <sub>4</sub> )	<i>1500</i>	<i>below200</i> Mg / L
Chlorine (Cl <sub>2</sub> )		<i>250</i> Mg / L
Temp	<i>40-80</i>	<i>66</i> Deg
Total Dissolved Solids		<i>440</i> Mg / L

Respectfully: CRAIGKUKUS

Title: CEMENTING SUPERVISOR

Location: GRANDJUNCTION CO

NOTICE:

This report is limited to the described sample tested. Any person using or relying on this report agrees that Halliburton shall not be liable for any loss or damage whether due to act or omission resulting from such report or

<b>Sales Order #:</b> 8470626	<b>Line Item:</b> 10	<b>Survey Conducted Date:</b> 9/19/2011
<b>Customer:</b> WILLIAMS PRODUCTION RMT INC - EBUS		<b>Job Type (BOM):</b> CMT SURFACE CASING BOM
<b>Customer Representative:</b> MIKE SHULTS		<b>API / UWI: (leave blank if unknown)</b> 05-045-20418
<b>Well Name:</b> SP		<b>Well Number:</b> 323-13
<b>Well Type:</b> Development Well	<b>Well Country:</b> United States of America	
<b>H2S Present:</b> No	<b>Well State:</b> Colorado	<b>Well County:</b> Garfield

Dear Customer,

We hope that you were satisfied with the service quality of this job performed by Halliburton. It is the aim of our management and service personnel to deliver equipment and service of a standard unmatched in the service sector of the energy industry.

Please take the time to let us know if our performance met with your satisfaction. Please be as critical as possible to ensure we constantly improve our service. Your comments are of great value to us and are intended for the exclusive use of Halliburton.

### CUSTOMER SATISFACTION SURVEY

CATEGORY	CUSTOMER SATISFACTION RESPONSE	
Survey Conducted Date	The date the survey was conducted	9/19/2011
Survey Interviewer	The survey interviewer is the person who initiated the survey.	CRAIG KUKUS (HX19742)
Customer Participation	Did the customer participate in this survey? (Y/N)	Yes
Customer Representative	Enter the Customer representative name	MIKE SHULTS
HSE	Was our HSE performance satisfactory? Circle Y or N	Yes
Equipment	Were you satisfied with our Equipment? Circle Y or N	Yes
Personnel	Were you satisfied with our people? Circle Y or N	Yes
Customer Comment	Customer's Comment	
Job DVA	Did we provide job DVA above our normal service today? Circle Y or N	No
Time	Please enter hours in decimal format to nearest quarter hour.	
Other	Enter short text for other efficiencies gained.	
Customer Initials	Customer's Initials	
Please provide details	Please describe how the job efficiencies were gained.	

CUSTOMER SIGNATURE