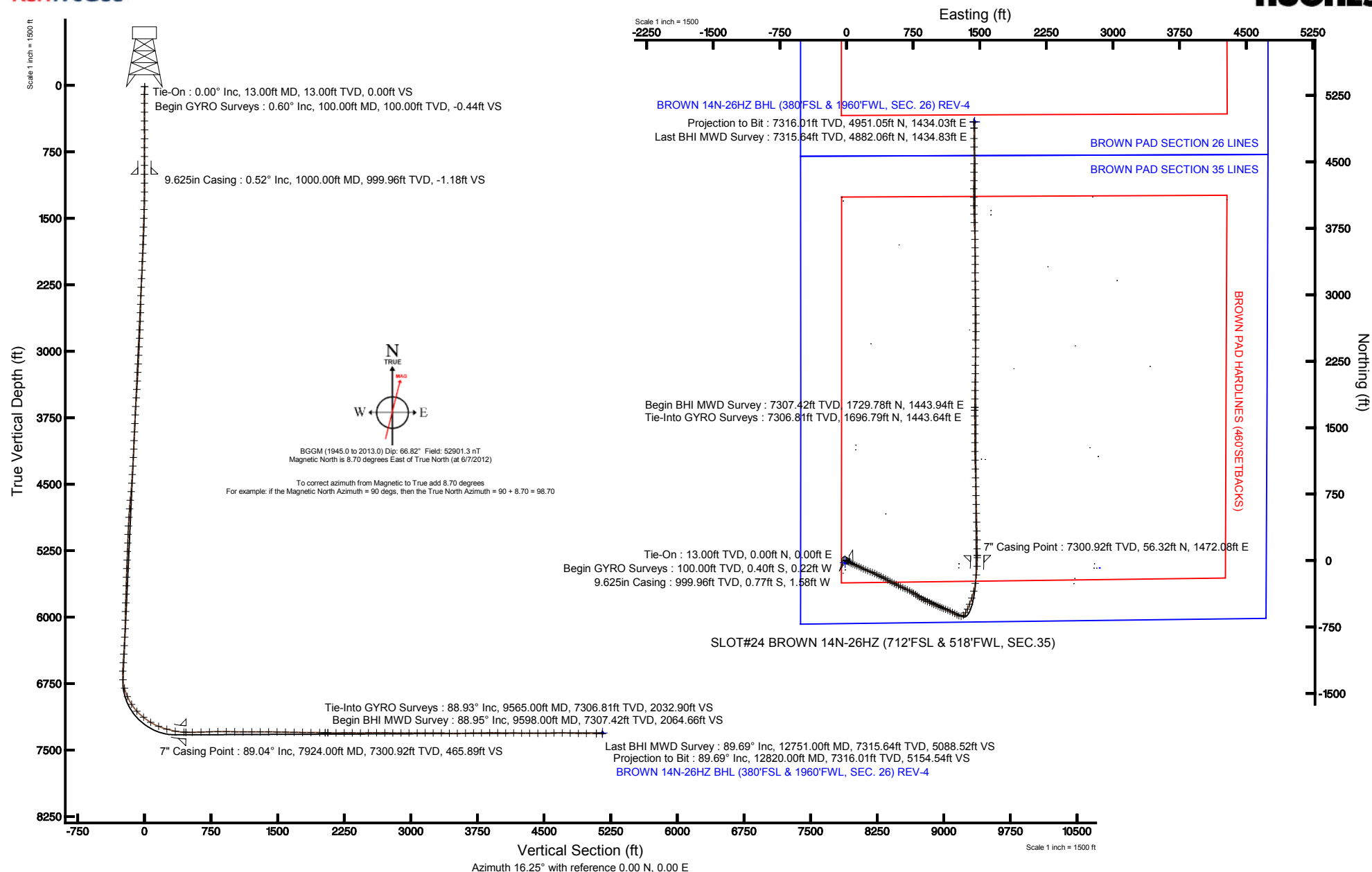


Location:	COLORADO	Slot:	SLOT#24 BROWN 14N-26HZ (712'FSL & 518'FWL, SEC.35)
Field:	WELD COUNTY (KERR MCGEE)	Well:	BROWN 14N-26HZ
Facility:	SEC.35-T3N-R66W	Wellbore:	BROWN 14N-26HZ PWB

Plot reference wellpath is BROWN 14N-26HZ (REV-D.0) PWP	
True vertical depths are referenced to ENSIGN 145 (RKB)	Grid System: NAD83 / Lambert Colorado SP, Northern Zone (501), US feet
Measured depths are referenced to ENSIGN 145 (RKB)	North Reference: True north
ENSGN 145 (RKB) to Mean Sea Level: 5033 feet	Scale: True distance
Mean Sea Level to Mud line [At Slot: SLOT#24 BROWN 14N-26HZ (712FSL & 518F'WL, SEC.35)]: 0 feet	Depths are in feet
Coordinates are in feet referenced to Slot	Created by: wlisset02 on 7/10/2012





Actual Wellpath Report

BROWN 14N-26HZ AWP

Page 1 of 6



REFERENCE WELLPATH IDENTIFICATION

Operator	KERR-MCGEE OIL & GAS ONSHORE LP	Slot	SLOT#24 BROWN 14N-26HZ (712'FSL & 518'FWL, SEC.35)
Area	COLORADO	Well	BROWN 14N-26HZ
Field	WELD COUNTY (KERR MCGEE)	Wellbore	BROWN 14N-26HZ AWB
Facility	SEC.35-T3N-R66W		

REPORT SETUP INFORMATION

Projection System	NAD83 / Lambert Colorado SP, Northern Zone (501), US feet	Software System	WellArchitect® 3.0.2
North Reference	True	User	Wilsjef02
Scale	0.999958	Report Generated	7/9/2012 at 16:19:24
Convergence at slot	0.48° East	Database/Source file	WellArchitectDB/BROWN_14N-26HZ_AWB.xml

WELLPATH LOCATION

	Local coordinates		Grid coordinates		Geographic coordinates	
	North[ft]	East[ft]	Easting[US ft]	Northing[US ft]	Latitude	Longitude
Slot Location	-1147.49	-1513.48	3209033.71	1307998.06	40°10'35.148"N	104°45'06.898"W
Facility Reference Pt			3210537.33	1309158.32	40°10'46.488"N	104°44'47.400"W
Field Reference Pt			3197771.84	1268891.29	40°04'09.600"N	104°47'36.000"W

WELLPATH DATUM

Calculation method	Minimum curvature	ENSIGN 145 (RKB) to Facility Vertical Datum	5033.00ft
Horizontal Reference Pt	Slot	ENSIGN 145 (RKB) to Mean Sea Level	5033.00ft
Vertical Reference Pt	ENSIGN 145 (RKB)	ENSIGN 145 (RKB) to Mud Line at Slot (SLOT#24 BROWN 14N-26HZ (712'FSL & 518'FWL, SEC.35))	5033.00ft
MD Reference Pt	ENSIGN 145 (RKB)	Section Origin	N 0.00, E 0.00 ft
Field Vertical Reference	Mean Sea Level	Section Azimuth	16.25°



Actual Wellpath Report

BROWN 14N-26HZ AWP

Page 2 of 6



REFERENCE WELLPATH IDENTIFICATION

Operator	KERR-MCGEE OIL & GAS ONSHORE LP	Slot	SLOT#24 BROWN 14N-26HZ (712'FSL & 518'FWL, SEC.35)
Area	COLORADO	Well	BROWN 14N-26HZ
Field	WELD COUNTY (KERR MCGEE)	Wellbore	BROWN 14N-26HZ AWB
Facility	SEC.35-T3N-R66W		

WELLPATH DATA (134 stations) † = interpolated/extrapolated station

MD [ft]	Inclination [°]	Azimuth [°]	TVD [ft]	Vert Sect [ft]	North [ft]	East [ft]	Latitude	Longitude	DLS [°/100ft]	Comments
0.00†	0.000	208.381	0.00	0.00	0.00	0.00	40°10'35.148"N	104°45'06.898"W	0.00	
13.00	0.000	208.381	13.00	0.00	0.00	0.00	40°10'35.148"N	104°45'06.898"W	0.00	Tie-On
100.00	0.596	208.381	100.00	-0.44	-0.40	-0.22	40°10'35.144"N	104°45'06.901"W	0.69	Begin GYRO Surveys
200.00	0.744	254.982	199.99	-1.29	-1.02	-1.09	40°10'35.138"N	104°45'06.912"W	0.55	
300.00	0.628	115.320	299.99	-1.71	-1.43	-1.22	40°10'35.134"N	104°45'06.914"W	1.29	
400.00	0.524	26.785	399.99	-1.35	-1.25	-0.52	40°10'35.136"N	104°45'06.905"W	0.81	
500.00	0.619	351.691	499.98	-0.41	-0.31	-0.39	40°10'35.145"N	104°45'06.903"W	0.36	
600.00	0.655	256.796	599.98	-0.20	0.09	-1.03	40°10'35.149"N	104°45'06.911"W	0.94	
700.00	0.601	166.024	699.97	-0.93	-0.55	-1.46	40°10'35.143"N	104°45'06.917"W	0.89	
800.00	0.551	133.961	799.97	-1.61	-1.39	-0.98	40°10'35.134"N	104°45'06.911"W	0.32	
900.00	0.519	309.290	899.97	-1.65	-1.44	-0.99	40°10'35.134"N	104°45'06.911"W	1.07	
1000.00	0.516	327.436	999.96	-1.18	-0.77	-1.58	40°10'35.140"N	104°45'06.918"W	0.16	
1100.00	0.516	131.236	1099.96	-1.07	-0.69	-1.48	40°10'35.141"N	104°45'06.917"W	1.02	
1200.00	2.145	123.812	1199.93	-1.83	-2.02	0.41	40°10'35.128"N	104°45'06.893"W	1.63	
1300.00	4.281	119.932	1299.77	-3.28	-4.93	5.20	40°10'35.099"N	104°45'06.831"W	2.15	
1400.00	5.874	123.715	1399.37	-5.70	-9.63	12.69	40°10'35.053"N	104°45'06.735"W	1.63	
1500.00	7.706	121.429	1498.67	-8.99	-15.97	22.67	40°10'34.990"N	104°45'06.606"W	1.85	
1600.00	9.853	118.106	1597.49	-12.50	-23.50	35.94	40°10'34.916"N	104°45'06.435"W	2.21	
1700.00	11.719	115.647	1695.72	-15.92	-31.92	52.64	40°10'34.833"N	104°45'06.220"W	1.92	
1800.00	13.414	114.114	1793.32	-19.17	-41.06	72.39	40°10'34.742"N	104°45'05.965"W	1.73	
1900.00	14.031	113.734	1890.47	-22.34	-50.68	94.07	40°10'34.647"N	104°45'05.686"W	0.62	
2000.00	14.626	114.621	1987.36	-25.76	-60.82	116.65	40°10'34.547"N	104°45'05.395"W	0.63	
2100.00	15.544	114.176	2083.91	-29.44	-71.56	140.35	40°10'34.441"N	104°45'05.090"W	0.93	
2200.00	15.259	115.968	2180.32	-33.51	-82.81	164.40	40°10'34.330"N	104°45'04.780"W	0.55	
2300.00	15.671	117.518	2276.70	-38.38	-94.82	188.21	40°10'34.211"N	104°45'04.473"W	0.58	
2400.00	16.028	110.302	2372.90	-41.99	-105.85	213.14	40°10'34.102"N	104°45'04.152"W	2.00	
2500.00	16.589	111.181	2468.88	-44.20	-115.79	239.40	40°10'34.004"N	104°45'03.814"W	0.61	
2600.00	16.091	111.653	2564.84	-46.73	-126.07	265.59	40°10'33.902"N	104°45'03.476"W	0.52	
2700.00	15.658	111.760	2661.03	-49.34	-136.18	291.00	40°10'33.802"N	104°45'03.149"W	0.43	
2800.00	15.608	115.249	2757.33	-52.74	-146.92	315.70	40°10'33.696"N	104°45'02.831"W	0.94	
2900.00	16.249	115.429	2853.49	-57.08	-158.67	340.51	40°10'33.580"N	104°45'02.511"W	0.64	
3000.00	15.894	115.372	2949.58	-61.48	-170.54	365.51	40°10'33.463"N	104°45'02.189"W	0.36	
3100.00	15.424	116.699	3045.87	-66.06	-182.39	389.77	40°10'33.346"N	104°45'01.877"W	0.59	
3200.00	16.117	116.282	3142.11	-70.90	-194.51	414.09	40°10'33.226"N	104°45'01.563"W	0.70	
3300.00	16.449	116.315	3238.09	-75.79	-206.93	439.23	40°10'33.103"N	104°45'01.240"W	0.33	
3400.00	15.849	118.989	3334.15	-81.28	-219.82	463.86	40°10'32.976"N	104°45'00.922"W	0.96	
3500.00	16.473	119.618	3430.20	-87.57	-233.45	488.13	40°10'32.841"N	104°45'00.610"W	0.65	
3600.00	15.959	119.302	3526.22	-93.95	-247.18	512.45	40°10'32.705"N	104°45'00.296"W	0.52	
3700.00	15.245	118.320	3622.53	-99.81	-260.15	536.01	40°10'32.577"N	104°44'59.993"W	0.76	
3800.00	15.227	115.948	3719.02	-104.77	-272.13	559.39	40°10'32.459"N	104°44'59.692"W	0.62	
3900.00	16.181	116.614	3815.29	-109.50	-284.12	583.66	40°10'32.340"N	104°44'59.379"W	0.97	
4000.00	15.581	116.142	3911.47	-114.31	-296.28	608.17	40°10'32.220"N	104°44'59.063"W	0.61	
4100.00	15.754	113.765	4007.75	-118.40	-307.67	632.65	40°10'32.108"N	104°44'58.748"W	0.66	
4200.00	16.324	113.515	4103.86	-121.95	-318.75	657.96	40°10'31.998"N	104°44'58.422"W	0.57	
4300.00	17.344	115.400	4199.58	-126.10	-330.75	684.32	40°10'31.879"N	104°44'58.082"W	1.16	



Actual Wellpath Report

BROWN 14N-26HZ AWP

Page 3 of 6



REFERENCE WELLPATH IDENTIFICATION

Operator	KERR-MCGEE OIL & GAS ONSHORE LP	Slot	SLOT#24 BROWN 14N-26HZ (712'FSL & 518'FWL, SEC.35)
Area	COLORADO	Well	BROWN 14N-26HZ
Field	WELD COUNTY (KERR MCGEE)	Wellbore	BROWN 14N-26HZ AWB
Facility	SEC.35-T3N-R66W		

WELLPATH DATA (134 stations) † = interpolated/extrapolated station

MD [ft]	Inclination [°]	Azimuth [°]	TVD [ft]	Vert Sect [ft]	North [ft]	East [ft]	Latitude	Longitude	DLS [°/100ft]	Comments
4400.00	16.872	118.274	4295.15	-131.50	-344.02	710.56	40°10'31.748"N	104°44'57.744"W	0.97	
4500.00	15.562	120.687	4391.17	-137.87	-357.74	734.88	40°10'31.613"N	104°44'57.431"W	1.47	
4600.00	13.892	120.272	4487.88	-144.12	-370.63	756.78	40°10'31.485"N	104°44'57.149"W	1.67	
4700.00	14.987	127.220	4584.73	-151.66	-384.51	777.45	40°10'31.348"N	104°44'56.882"W	2.05	
4800.00	14.749	126.157	4681.38	-160.62	-399.84	798.02	40°10'31.197"N	104°44'56.617"W	0.36	
4900.00	14.780	123.044	4778.08	-168.65	-414.31	818.99	40°10'31.054"N	104°44'56.347"W	0.79	
5000.00	15.141	122.716	4874.69	-176.03	-428.32	840.67	40°10'30.915"N	104°44'56.068"W	0.37	
5100.00	14.538	118.165	4971.36	-182.33	-441.30	862.73	40°10'30.787"N	104°44'55.784"W	1.31	
5200.00	15.056	112.839	5068.05	-186.41	-452.27	885.76	40°10'30.679"N	104°44'55.487"W	1.45	
5300.00	16.106	112.588	5164.37	-189.44	-462.64	910.54	40°10'30.576"N	104°44'55.168"W	1.05	
5400.00	16.209	113.930	5260.42	-192.84	-473.63	936.11	40°10'30.467"N	104°44'54.839"W	0.39	
5500.00	15.397	116.371	5356.64	-197.04	-485.19	960.76	40°10'30.353"N	104°44'54.521"W	1.05	
5600.00	14.725	112.978	5453.21	-200.86	-496.04	984.35	40°10'30.246"N	104°44'54.217"W	1.11	
5700.00	14.408	112.805	5550.00	-203.77	-505.83	1007.52	40°10'30.149"N	104°44'53.918"W	0.32	
5800.00	14.249	111.296	5646.88	-206.28	-515.12	1030.46	40°10'30.057"N	104°44'53.623"W	0.41	
5900.00	14.203	114.800	5743.82	-209.18	-524.73	1053.06	40°10'29.962"N	104°44'53.332"W	0.86	
6000.00	12.501	113.962	5841.11	-212.46	-534.28	1074.09	40°10'29.868"N	104°44'53.061"W	1.71	
6100.00	12.499	112.971	5938.74	-215.18	-542.90	1093.94	40°10'29.783"N	104°44'52.805"W	0.21	
6200.00	14.784	109.859	6035.92	-217.25	-551.45	1115.91	40°10'29.698"N	104°44'52.522"W	2.40	
6300.00	16.277	112.218	6132.26	-219.52	-561.09	1140.88	40°10'29.603"N	104°44'52.200"W	1.62	
6400.00	16.135	116.903	6228.29	-223.54	-572.68	1166.25	40°10'29.489"N	104°44'51.874"W	1.31	
6500.00	18.412	116.845	6323.78	-229.02	-586.10	1192.74	40°10'29.356"N	104°44'51.533"W	2.28	
6600.00	15.877	117.520	6419.33	-234.60	-599.55	1218.96	40°10'29.223"N	104°44'51.195"W	2.54	
6700.00	16.171	118.175	6515.44	-240.15	-612.45	1243.37	40°10'29.095"N	104°44'50.880"W	0.35	
6800.00	13.405	118.969	6612.12	-245.59	-624.64	1265.79	40°10'28.975"N	104°44'50.591"W	2.77	
6900.00	15.681	88.932	6709.05	-244.11	-630.01	1289.48	40°10'28.922"N	104°44'50.286"W	7.78	
7000.00	19.517	51.524	6804.65	-226.39	-619.33	1316.16	40°10'29.027"N	104°44'49.943"W	11.71	
7100.00	23.882	32.505	6897.65	-193.27	-591.81	1340.16	40°10'29.299"N	104°44'49.633"W	8.22	
7200.00	33.476	23.786	6985.32	-146.36	-549.39	1362.22	40°10'29.719"N	104°44'49.349"W	10.44	
7300.00	42.221	22.027	7064.21	-85.47	-492.89	1385.99	40°10'30.277"N	104°44'49.043"W	8.81	
7400.00	51.699	17.696	7132.40	-12.63	-424.19	1410.58	40°10'30.956"N	104°44'48.726"W	9.99	
7500.00	58.467	13.502	7189.62	69.28	-345.25	1432.49	40°10'31.736"N	104°44'48.444"W	7.59	
7600.00	67.809	8.942	7234.77	158.00	-257.85	1449.68	40°10'32.600"N	104°44'48.222"W	10.19	
7700.00	74.877	5.567	7266.75	251.50	-163.93	1461.58	40°10'33.528"N	104°44'48.069"W	7.76	
7800.00	78.881	3.827	7289.45	346.89	-66.89	1469.54	40°10'34.487"N	104°44'47.966"W	4.35	
7900.00	88.525	359.428	7300.41	442.92	32.32	1472.32	40°10'35.467"N	104°44'47.930"W	10.59	
7924.00†	89.042	359.395	7300.92	465.89	56.32	1472.08	40°10'35.704"N	104°44'47.933"W	2.16	7" Casing Point
8000.00	90.679	359.292	7301.11	538.60	132.31	1471.21	40°10'36.455"N	104°44'47.945"W	2.16	
8100.00	91.449	359.084	7299.25	634.19	232.28	1469.79	40°10'37.443"N	104°44'47.963"W	0.80	
8200.00	91.933	358.844	7296.30	729.63	332.22	1467.98	40°10'38.431"N	104°44'47.986"W	0.54	
8300.00	90.452	358.872	7294.22	825.04	432.18	1465.99	40°10'39.418"N	104°44'48.012"W	1.48	
8400.00	89.848	358.653	7293.95	920.42	532.15	1463.83	40°10'40.406"N	104°44'48.039"W	0.64	
8500.00	88.316	358.275	7295.56	1015.62	632.10	1461.15	40°10'41.394"N	104°44'48.074"W	1.58	
8600.00	90.077	358.805	7296.96	1110.87	732.05	1458.60	40°10'42.382"N	104°44'48.106"W	1.84	
8700.00	90.667	358.496	7296.31	1206.19	832.02	1456.25	40°10'43.370"N	104°44'48.137"W	0.67	



Actual Wellpath Report

BROWN 14N-26HZ AWP

Page 4 of 6



REFERENCE WELLPATH IDENTIFICATION

Operator	KERR-MCGEE OIL & GAS ONSHORE LP	Slot	SLOT#24 BROWN 14N-26HZ (712'FSL & 518'FWL, SEC.35)
Area	COLORADO	Well	BROWN 14N-26HZ
Field	WELD COUNTY (KERR MCGEE)	Wellbore	BROWN 14N-26HZ AWB
Facility	SEC.35-T3N-R66W		

WELLPATH DATA (134 stations)

MD [ft]	Inclination [°]	Azimuth [°]	TVD [ft]	Vert Sect [ft]	North [ft]	East [ft]	Latitude	Longitude	DLS [°/100ft]	Comments
8800.00	89.736	358.349	7295.96	1301.39	931.98	1453.49	40°10'44.357"N	104°44'48.172"W	0.94	
8900.00	89.416	358.228	7296.70	1396.52	1031.94	1450.51	40°10'45.345"N	104°44'48.211"W	0.34	
9000.00	88.951	358.514	7298.12	1491.68	1131.88	1447.67	40°10'46.333"N	104°44'48.247"W	0.55	
9100.00	88.709	359.855	7300.17	1587.26	1231.85	1446.24	40°10'47.321"N	104°44'48.265"W	1.36	
9200.00	89.283	0.183	7301.92	1683.26	1331.84	1446.28	40°10'48.309"N	104°44'48.265"W	0.66	
9300.00	89.348	359.368	7303.11	1779.15	1431.83	1445.88	40°10'49.297"N	104°44'48.270"W	0.82	
9400.00	89.605	359.431	7304.03	1874.85	1531.82	1444.84	40°10'50.285"N	104°44'48.283"W	0.26	
9500.00	88.727	359.629	7305.48	1970.62	1631.80	1444.02	40°10'51.273"N	104°44'48.294"W	0.90	
9565.00	88.930	359.714	7306.81	2032.90	1696.79	1443.64	40°10'51.915"N	104°44'48.298"W	0.34	Tie-Into GYRO Surveys
9598.00	88.950	1.310	7307.42	2064.66	1729.78	1443.94	40°10'52.241"N	104°44'48.295"W	4.84	Begin BHI MWD Survey
9693.00	90.250	0.440	7308.08	2156.26	1824.76	1445.39	40°10'53.180"N	104°44'48.276"W	1.65	
9788.00	90.240	0.950	7307.68	2247.78	1919.75	1446.54	40°10'54.119"N	104°44'48.261"W	0.54	
9883.00	89.470	1.140	7307.92	2339.45	2014.74	1448.27	40°10'55.057"N	104°44'48.239"W	0.83	
9977.00	90.060	0.880	7308.30	2430.15	2108.72	1449.93	40°10'55.986"N	104°44'48.217"W	0.69	
10072.00	90.670	0.840	7307.70	2521.74	2203.71	1451.36	40°10'56.925"N	104°44'48.199"W	0.64	
10167.00	89.470	1.050	7307.58	2613.37	2298.69	1452.92	40°10'57.863"N	104°44'48.178"W	1.28	
10262.00	90.240	1.080	7307.82	2705.06	2393.68	1454.69	40°10'58.802"N	104°44'48.156"W	0.81	
10357.00	89.070	0.870	7308.40	2796.70	2488.66	1456.30	40°10'59.741"N	104°44'48.135"W	1.25	
10452.00	90.270	0.330	7308.94	2888.18	2583.65	1457.30	40°11'00.679"N	104°44'48.122"W	1.39	
10546.00	89.930	359.720	7308.78	2978.43	2677.65	1457.34	40°11'01.608"N	104°44'48.121"W	0.74	
10641.00	90.610	359.660	7308.33	3069.49	2772.65	1456.83	40°11'02.547"N	104°44'48.128"W	0.72	
10736.00	89.530	359.240	7308.21	3160.44	2867.64	1455.91	40°11'03.486"N	104°44'48.139"W	1.22	
10831.00	90.030	358.600	7308.58	3251.13	2962.62	1454.12	40°11'04.424"N	104°44'48.162"W	0.85	
10926.00	88.820	358.200	7309.53	3341.55	3057.58	1451.47	40°11'05.363"N	104°44'48.197"W	1.34	
11021.00	88.850	359.260	7311.46	3432.13	3152.53	1449.37	40°11'06.301"N	104°44'48.224"W	1.12	
11116.00	90.300	0.480	7312.17	3523.27	3247.53	1449.15	40°11'07.240"N	104°44'48.226"W	1.99	
11211.00	91.510	0.510	7310.67	3614.69	3342.51	1449.97	40°11'08.178"N	104°44'48.216"W	1.27	
11305.00	90.150	359.360	7309.31	3704.89	3436.50	1449.86	40°11'09.107"N	104°44'48.217"W	1.89	
11400.00	90.890	359.290	7308.44	3795.77	3531.49	1448.75	40°11'10.046"N	104°44'48.231"W	0.78	
11495.00	90.240	358.510	7307.51	3886.45	3626.46	1446.92	40°11'10.984"N	104°44'48.255"W	1.07	
11590.00	89.470	356.930	7307.75	3976.52	3721.38	1443.14	40°11'11.922"N	104°44'48.303"W	1.85	
11685.00	89.840	358.300	7308.32	4066.54	3816.30	1439.19	40°11'12.860"N	104°44'48.354"W	1.49	
11780.00	88.890	357.820	7309.37	4156.79	3911.23	1435.97	40°11'13.798"N	104°44'48.396"W	1.12	
11875.00	89.010	359.840	7311.11	4247.41	4006.19	1434.03	40°11'14.737"N	104°44'48.421"W	2.13	
11969.00	89.440	359.500	7312.39	4337.50	4100.18	1433.49	40°11'15.666"N	104°44'48.427"W	0.58	
12064.00	90.090	0.680	7312.78	4428.74	4195.18	1433.64	40°11'16.604"N	104°44'48.425"W	1.42	
12159.00	91.130	0.460	7311.76	4520.20	4290.17	1434.59	40°11'17.543"N	104°44'48.413"W	1.12	
12254.00	90.950	0.840	7310.04	4611.69	4385.15	1435.67	40°11'18.482"N	104°44'48.399"W	0.44	
12349.00	89.960	0.450	7309.29	4703.18	4480.14	1436.73	40°11'19.420"N	104°44'48.385"W	1.12	
12444.00	87.810	359.760	7311.13	4794.42	4575.11	1436.91	40°11'20.359"N	104°44'48.383"W	2.38	
12539.00	89.160	359.850	7313.65	4885.50	4670.08	1436.59	40°11'21.297"N	104°44'48.387"W	1.42	
12634.00	89.470	359.480	7314.78	4976.54	4765.07	1436.03	40°11'22.236"N	104°44'48.394"W	0.51	
12751.00	89.690	359.340	7315.64	5088.52	4882.06	1434.83	40°11'23.392"N	104°44'48.410"W	0.22	Last BHI MWD Survey
12820.00	89.690	359.340	7316.01	5154.54	4951.05	1434.03	40°11'24.074"N	104°44'48.420"W	0.00	Projection to Bit



Actual Wellpath Report

BROWN 14N-26HZ AWP

Page 5 of 6



REFERENCE WELLPATH IDENTIFICATION

Operator	KERR-MCGEE OIL & GAS ONSHORE LP	Slot	SLOT#24 BROWN 14N-26HZ (712'FSL & 518'FWL, SEC.35)
Area	COLORADO	Well	BROWN 14N-26HZ
Field	WELD COUNTY (KERR MCGEE)	Wellbore	BROWN 14N-26HZ AWB
Facility	SEC.35-T3N-R66W		

HOLE & CASING SECTIONS - Ref Wellbore: BROWN 14N-26HZ AWB Ref Wellpath: BROWN 14N-26HZ AWP

String/Diameter	Start MD [ft]	End MD [ft]	Interval [ft]	Start TVD [ft]	End TVD [ft]	Start N/S [ft]	Start E/W [ft]	End N/S [ft]	End E/W [ft]
13.5in Open Hole	144.00	1000.00	856.00	144.00	999.96	-0.74	-0.51	-0.77	-1.58
9.625in Casing	144.00	1000.00	856.00	144.00	999.96	-0.74	-0.51	-0.77	-1.58
8.75in Open Hole	1000.00	7930.00	6930.00	999.96	7301.01	-0.77	-1.58	62.32	1472.01
7in Casing Intermediate	144.00	7924.00	7780.00	144.00	7300.92	-0.74	-0.51	56.32	1472.08
6.125in Open Hole	7924.00	12820.00	4896.00	7300.92	7316.01	56.32	1472.08	4951.05	1434.03

TARGETS

Name	MD [ft]	TVD [ft]	North [ft]	East [ft]	Grid East [US ft]	Grid North [US ft]	Latitude	Longitude	Shape
BROWN 15-35HZ PAD SECTION LINES		-38.00	-85.45	2848.14	3211882.34	1307936.64	40°10'34.302"N	104°44'30.206"W	polygon
BROWN PAD SECTION 26 LINES		0.00	-24.79	-16.77	3209017.16	1307973.13	40°10'34.903"N	104°45'07.114"W	polygon
BROWN 14N-26HZ BHL (380'FSL & 1960'FWL, SEC. 26) REV-3		7238.00	4951.41	1442.79	3210434.62	1312961.24	40°11'24.077"N	104°44'48.307"W	point
BROWN 14N-26HZ BHL (460'FSL & 1960'FWL, SEC. 26) REV-2		7238.00	5031.41	1442.79	3210433.95	1313041.24	40°11'24.868"N	104°44'48.307"W	point
BROWN 14N-26HZ BHL ON PLAT (460'FSL & 1960'FWL, SEC. 26) REV-1		7300.00	5031.41	1442.79	3210433.94	1313041.23	40°11'24.868"N	104°44'48.307"W	point
BROWN 14N-26HZ BHL (380'FSL & 1960'FWL, SEC. 26) REV-4		7308.00	4951.41	1442.79	3210434.62	1312961.24	40°11'24.077"N	104°44'48.307"W	point
BROWN 15-35HZ PAD HARDLINES (460' SETBACKS)		7482.00	-85.45	2848.14	3211882.34	1307936.64	40°10'34.302"N	104°44'30.206"W	polygon
BROWN PAD HARDLINES (460' SETBACKS) SEC.26		7482.00	-24.79	-16.77	3209017.16	1307973.13	40°10'34.903"N	104°45'07.114"W	polygon

WELLPATH COMPOSITION - Ref Wellbore: BROWN 14N-26HZ AWB Ref Wellpath: BROWN 14N-26HZ AWP

Start MD [ft]	End MD [ft]	Positional Uncertainty Model	Log Name/Comment	Wellbore
13.00	9565.00	Generic gyro - continuous (Standard)	GYRODATA SURVEYS <100-9565>	BROWN 14N-26HZ AWB
9565.00	12751.00	OnTrak (Standard)	BHI MWD SURVEYS 6 1/8" HOLE <9598-12751>	BROWN 14N-26HZ AWB
12751.00	12820.00	Blind Drilling (std)	Projection to bit	BROWN 14N-26HZ AWB



Actual Wellpath Report

BROWN 14N-26HZ AWP

Page 6 of 6



REFERENCE WELLPATH IDENTIFICATION

Operator	KERR-MCGEE OIL & GAS ONSHORE LP	Slot	SLOT#24 BROWN 14N-26HZ (712'FSL & 518'FWL, SEC.35)
Area	COLORADO	Well	BROWN 14N-26HZ
Field	WELD COUNTY (KERR MCGEE)	Wellbore	BROWN 14N-26HZ AWB
Facility	SEC.35-T3N-R66W		

WELLPATH COMMENTS

MD [ft]	Inclination [°]	Azimuth [°]	TVD [ft]	Comment
13.00	0.000	208.381	13.00	Tie-On
100.00	0.596	208.381	100.00	Begin GYRO Surveys
7924.00	89.042	359.395	7300.92	7" Casing Point
9565.00	88.930	359.714	7306.81	Tie-Into GYRO Surveys
9598.00	88.950	1.310	7307.42	Begin BHI MWD Survey
12751.00	89.690	359.340	7315.64	Last BHI MWD Survey
12820.00	89.690	359.340	7316.01	Projection to Bit