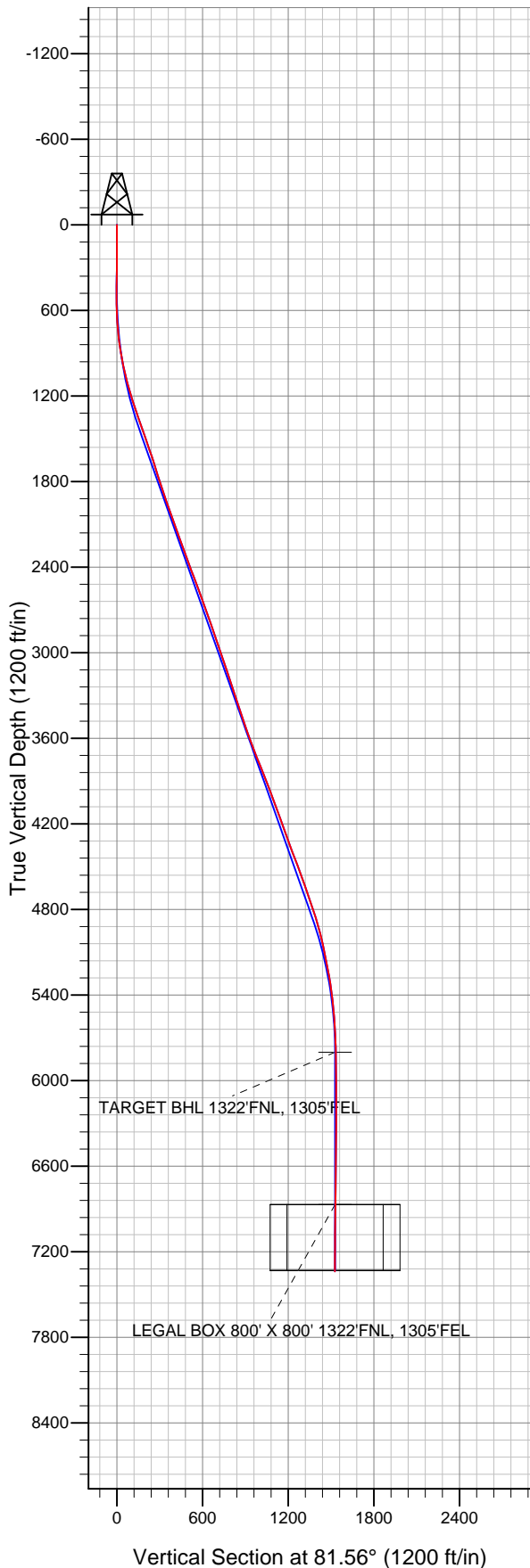
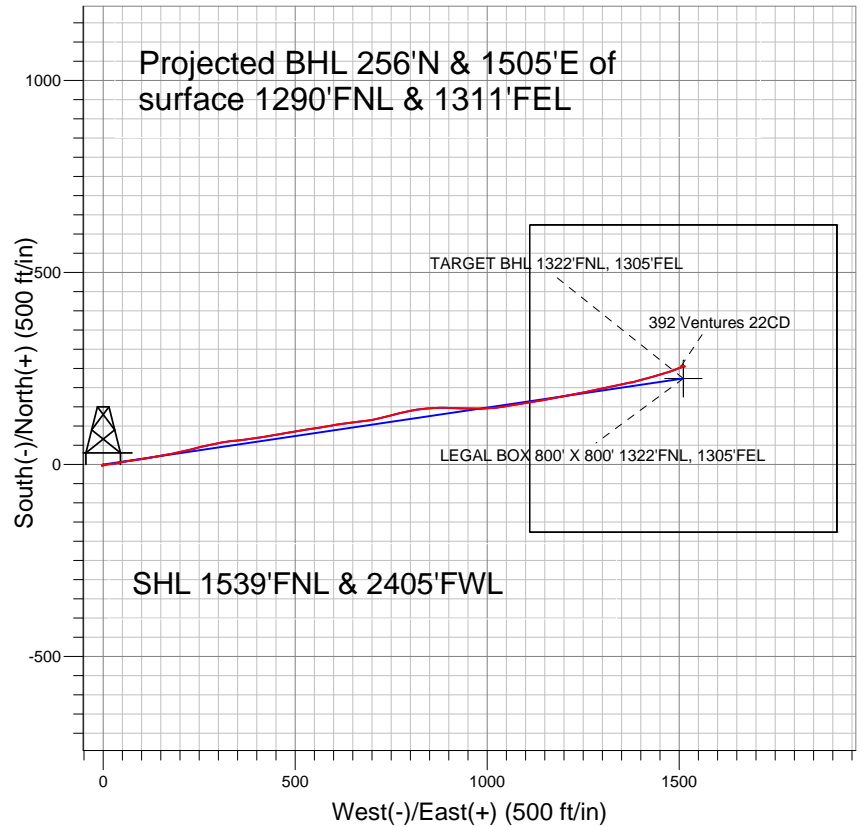




Well Name: **392 Ventures 22CD**
Surface Location: 392 Ventures Pad Sec.22-T6N-R67W
North American Datum 1983 US State Plane 1983 Colorado Northern Zone
Ground Elevation: 4783.0
+N/-S +E/-W Northing Easting Latitude Longitude Slot
0.0 0.0 1416650.42 3172362.92 40.475454 -104.880431
Original Well Elev WELL @ 4796.0ft (Original Well Elev)



Peterson Energy Operating Inc.- Weld County, CO



LEGEND

- △ 392 Ventures 22CD, Wellbore #1, Plan #3 (11-21-11) V0
- Wellbore #1
- Survey #1

Final Survey Plot

Projected Final Survey -
7585'MD & 7337'TVD @ 1526'VS
0.6 deg Inc 260.8 deg AZ

Project: SEC.22-T6N-R67W
Site: 392 Ventures Pad Sec.22-T6N-R67W
Well: 392 Ventures 22CD
Plan: Wellbore #1



Directional

Peterson Energy Operating Inc.- Weld County, CO

SEC.22-T6N-R67W

392 Ventures Pad Sec.22-T6N-R67W

392 Ventures 22CD

Wellbore #1

Survey: Survey #1

Standard Survey Report

28 November, 2011

Survey										
	Measured Depth (ft)	Inclination (°)	Azimuth (°)	Vertical Depth (ft)	+N/-S (ft)	+E/-W (ft)	Vertical Section (ft)	Dogleg Rate (°/100ft)	Build Rate (°/100ft)	Turn Rate (°/100ft)
	0.0	0.00	0.00	0.0	0.0	0.0	0.0	0.00	0.00	0.00
	90.0	0.40	273.10	90.0	0.0	-0.3	-0.3	0.44	0.44	0.00
	182.0	0.40	67.20	182.0	0.2	-0.3	-0.3	0.85	0.00	167.50
	275.0	0.70	216.70	275.0	-0.2	-0.4	-0.4	1.14	0.32	160.75
	367.0	0.90	218.70	367.0	-1.2	-1.2	-1.3	0.22	0.22	2.17
	467.0	1.10	245.40	467.0	-2.2	-2.5	-2.8	0.50	0.20	26.70
	489.0	1.20	234.80	489.0	-2.4	-2.9	-3.2	1.07	0.45	-48.18
	583.0	1.50	91.70	583.0	-3.0	-2.5	-2.9	2.73	0.32	-152.23
	676.0	4.20	71.10	675.8	-2.0	2.0	1.6	3.06	2.90	-22.15
	770.0	6.00	81.70	769.5	-0.1	10.1	9.9	2.15	1.91	11.28
	863.0	8.70	81.80	861.7	1.6	21.8	21.8	2.90	2.90	0.11
	957.0	10.90	79.20	954.3	4.3	37.6	37.8	2.39	2.34	-2.77

Company:	Peterson Energy Operating Inc.- Weld County, CO	Local Co-ordinate Reference:	Well 392 Ventures 22CD
Project:	SEC.22-T6N-R67W	TVD Reference:	WELL @ 4796.0ft (Original Well Elev)
Site:	392 Ventures Pad Sec.22-T6N-R67W	MD Reference:	WELL @ 4796.0ft (Original Well Elev)
Well:	392 Ventures 22CD	North Reference:	True
Wellbore:	Wellbore #1	Survey Calculation Method:	Minimum Curvature
Design:	Wellbore #1	Database:	Landmark

Survey									
Measured Depth (ft)	Inclination (°)	Azimuth (°)	Vertical Depth (ft)	+N/-S (ft)	+E/-W (ft)	Vertical Section (ft)	Dogleg Rate (°/100ft)	Build Rate (°/100ft)	Turn Rate (°/100ft)
1,051.0	13.10	81.20	1,046.3	7.5	56.9	57.4	2.38	2.34	2.13
1,144.0	15.80	81.00	1,136.3	11.1	79.8	80.6	2.90	2.90	-0.22
1,238.0	17.60	80.50	1,226.3	15.5	106.5	107.6	1.92	1.91	-0.53
1,331.0	19.10	82.00	1,314.6	19.9	135.4	136.9	1.69	1.61	1.61
1,425.0	19.30	78.50	1,403.4	25.2	165.8	167.7	1.24	0.21	-3.72
1,518.0	19.40	76.70	1,491.1	31.8	195.9	198.5	0.65	0.11	-1.94
1,612.0	18.90	75.50	1,579.9	39.2	225.9	229.2	0.68	-0.53	-1.28
1,706.0	17.80	77.30	1,669.1	46.2	254.6	258.6	1.32	-1.17	1.91
1,799.0	17.80	78.40	1,757.7	52.1	282.4	287.0	0.36	0.00	1.18
1,893.0	17.70	79.80	1,847.2	57.6	310.6	315.6	0.47	-0.11	1.49
1,986.0	19.50	83.80	1,935.4	61.7	339.9	345.3	2.37	1.94	4.30
2,080.0	19.80	83.70	2,023.9	65.2	371.3	376.9	0.32	0.32	-0.11
2,173.0	19.10	80.30	2,111.6	69.5	402.0	407.8	1.43	-0.75	-3.66
2,267.0	20.10	81.20	2,200.1	74.5	433.1	439.4	1.11	1.06	0.96
2,361.0	20.60	79.90	2,288.3	79.9	465.3	472.0	0.72	0.53	-1.38
2,454.0	19.60	80.30	2,375.6	85.4	496.8	504.0	1.09	-1.08	0.43
2,548.0	20.80	81.10	2,463.8	90.6	528.9	536.4	1.31	1.28	0.85
2,641.0	20.80	81.00	2,550.8	95.8	561.5	569.5	0.04	0.00	-0.11
2,735.0	19.60	79.50	2,639.0	101.3	593.5	601.9	1.39	-1.28	-1.60
2,828.0	18.80	82.00	2,726.8	106.2	623.7	632.5	1.23	-0.86	2.69
2,922.0	19.90	83.40	2,815.5	110.1	654.5	663.6	1.27	1.17	1.49
3,016.0	19.00	82.40	2,904.1	114.0	685.6	694.9	1.02	-0.96	-1.06
3,109.0	18.50	76.90	2,992.2	119.4	715.0	724.8	1.97	-0.54	-5.91
3,203.0	19.00	74.80	3,081.2	126.7	744.3	754.8	0.89	0.53	-2.23
3,296.0	18.40	77.00	3,169.3	134.0	773.2	784.5	1.00	-0.65	2.37
3,390.0	18.00	79.20	3,258.6	140.1	801.9	813.8	0.85	-0.43	2.34
3,483.0	18.00	83.00	3,347.0	144.5	830.3	842.5	1.26	0.00	4.09
3,577.0	18.70	86.90	3,436.3	147.1	859.8	872.0	1.50	0.74	4.15
3,671.0	19.10	90.50	3,525.2	147.8	890.2	902.2	1.31	0.43	3.83
3,764.0	20.70	92.90	3,612.7	146.8	921.8	933.4	1.93	1.72	2.58
3,858.0	21.30	92.10	3,700.4	145.4	955.5	966.5	0.71	0.64	-0.85
3,951.0	22.50	86.90	3,786.7	145.7	990.1	1,000.8	2.45	1.29	-5.59
4,045.0	21.70	83.50	3,873.8	148.6	1,025.3	1,036.1	1.60	-0.85	-3.62
4,138.0	20.60	80.20	3,960.5	153.4	1,058.6	1,069.6	1.74	-1.18	-3.55
4,232.0	19.90	80.80	4,048.7	158.7	1,090.6	1,102.1	0.78	-0.74	0.64
4,326.0	20.30	79.30	4,137.0	164.3	1,122.5	1,134.4	0.69	0.43	-1.60
4,419.0	18.90	81.10	4,224.6	169.7	1,153.2	1,165.6	1.64	-1.51	1.94
4,513.0	20.90	80.90	4,313.0	174.7	1,184.8	1,197.6	2.13	2.13	-0.21
4,606.0	20.40	79.10	4,400.0	180.3	1,217.1	1,230.4	0.87	-0.54	-1.94
4,700.0	20.60	76.10	4,488.1	187.4	1,249.2	1,263.2	1.14	0.21	-3.19
4,793.0	20.10	78.90	4,575.3	194.4	1,280.8	1,295.5	1.18	-0.54	3.01
4,887.0	19.30	78.10	4,663.8	200.7	1,311.8	1,327.1	0.90	-0.85	-0.85
4,981.0	18.90	78.40	4,752.6	207.0	1,342.0	1,357.8	0.44	-0.43	0.32
5,074.0	17.60	78.30	4,840.9	212.9	1,370.5	1,386.9	1.40	-1.40	-0.11
5,168.0	15.20	75.10	4,931.1	218.9	1,396.3	1,413.3	2.73	-2.55	-3.40
5,261.0	13.30	74.00	5,021.2	225.0	1,418.4	1,436.0	2.06	-2.04	-1.18
5,355.0	10.90	73.80	5,113.1	230.5	1,437.3	1,455.6	2.55	-2.55	-0.21
5,448.0	11.70	74.40	5,204.3	235.5	1,454.8	1,473.6	0.87	0.86	0.65
5,542.0	9.50	72.20	5,296.7	240.4	1,471.4	1,490.7	2.38	-2.34	-2.34
5,636.0	7.30	68.90	5,389.7	244.9	1,484.4	1,504.2	2.40	-2.34	-3.51
5,729.0	5.90	67.20	5,482.1	248.9	1,494.3	1,514.6	1.52	-1.51	-1.83
5,823.0	4.70	70.80	5,575.7	252.0	1,502.4	1,523.1	1.32	-1.28	3.83
5,916.0	2.90	62.80	5,668.5	254.4	1,508.1	1,529.1	2.01	-1.94	-8.60

Company:	Peterson Energy Operating Inc.- Weld County, CO	Local Co-ordinate Reference:	Well 392 Ventures 22CD
Project:	SEC.22-T6N-R67W	TVD Reference:	WELL @ 4796.0ft (Original Well Elev)
Site:	392 Ventures Pad Sec.22-T6N-R67W	MD Reference:	WELL @ 4796.0ft (Original Well Elev)
Well:	392 Ventures 22CD	North Reference:	True
Wellbore:	Wellbore #1	Survey Calculation Method:	Minimum Curvature
Design:	Wellbore #1	Database:	Landmark

Survey										
Measured Depth (ft)	Inclination (°)	Azimuth (°)	Vertical Depth (ft)	+N/-S (ft)	+E/-W (ft)	Vertical Section (ft)	Dogleg Rate (°/100ft)	Build Rate (°/100ft)	Turn Rate (°/100ft)	
6,010.0	0.90	82.10	5,762.4	255.6	1,510.9	1,532.1	2.20	-2.13	20.53	
6,047.6	0.75	93.28	5,800.0	255.6	1,511.4	1,532.6	0.59	-0.41	29.70	
TARGET BHL 1322'FNL, 1305'FEL										
6,103.0	0.60	118.60	5,855.4	255.4	1,512.1	1,533.2	0.59	-0.26	45.74	
6,197.0	0.70	87.80	5,949.4	255.2	1,513.1	1,534.1	0.38	0.11	-32.77	
6,291.0	0.30	139.50	6,043.4	255.0	1,513.8	1,534.8	0.60	-0.43	55.00	
6,384.0	0.30	75.50	6,136.4	254.9	1,514.2	1,535.2	0.34	0.00	-68.82	
6,478.0	0.40	354.00	6,230.4	255.3	1,514.4	1,535.5	0.49	0.11	-86.70	
6,571.0	0.40	335.40	6,323.4	255.9	1,514.2	1,535.4	0.14	0.00	-20.00	
6,665.0	0.30	269.40	6,417.4	256.2	1,513.8	1,535.1	0.42	-0.11	-70.21	
6,758.0	0.70	277.50	6,510.4	256.3	1,513.0	1,534.3	0.44	0.43	8.71	
6,852.0	0.40	279.80	6,604.4	256.4	1,512.1	1,533.4	0.32	-0.32	2.45	
6,946.0	0.90	287.40	6,698.4	256.7	1,511.1	1,532.4	0.54	0.53	8.09	
7,039.0	0.50	282.70	6,791.4	257.0	1,510.0	1,531.4	0.43	-0.43	-5.05	
7,115.7	0.73	254.97	6,868.0	257.0	1,509.2	1,530.6	0.49	0.30	-36.17	
LEGAL BOX 800' X 800' 1322'FNL, 1305'FEL										
7,133.0	0.80	251.20	6,885.4	256.9	1,509.0	1,530.4	0.49	0.39	-21.75	
7,226.0	0.90	259.90	6,978.3	256.6	1,507.7	1,529.0	0.18	0.11	9.35	
7,320.0	0.70	264.40	7,072.3	256.4	1,506.4	1,527.7	0.22	-0.21	4.79	
7,413.0	0.10	282.20	7,165.3	256.3	1,505.7	1,527.0	0.65	-0.65	19.14	
7,507.0	0.50	227.50	7,259.3	256.1	1,505.3	1,526.6	0.48	0.43	-58.19	
7,573.0	0.60	260.80	7,325.3	255.8	1,504.8	1,526.0	0.50	0.15	50.45	
7,585.0	0.60	260.80	7,337.3	255.8	1,504.7	1,525.9	0.00	0.00	0.00	

Checked By: _____ Approved By: _____ Date: _____