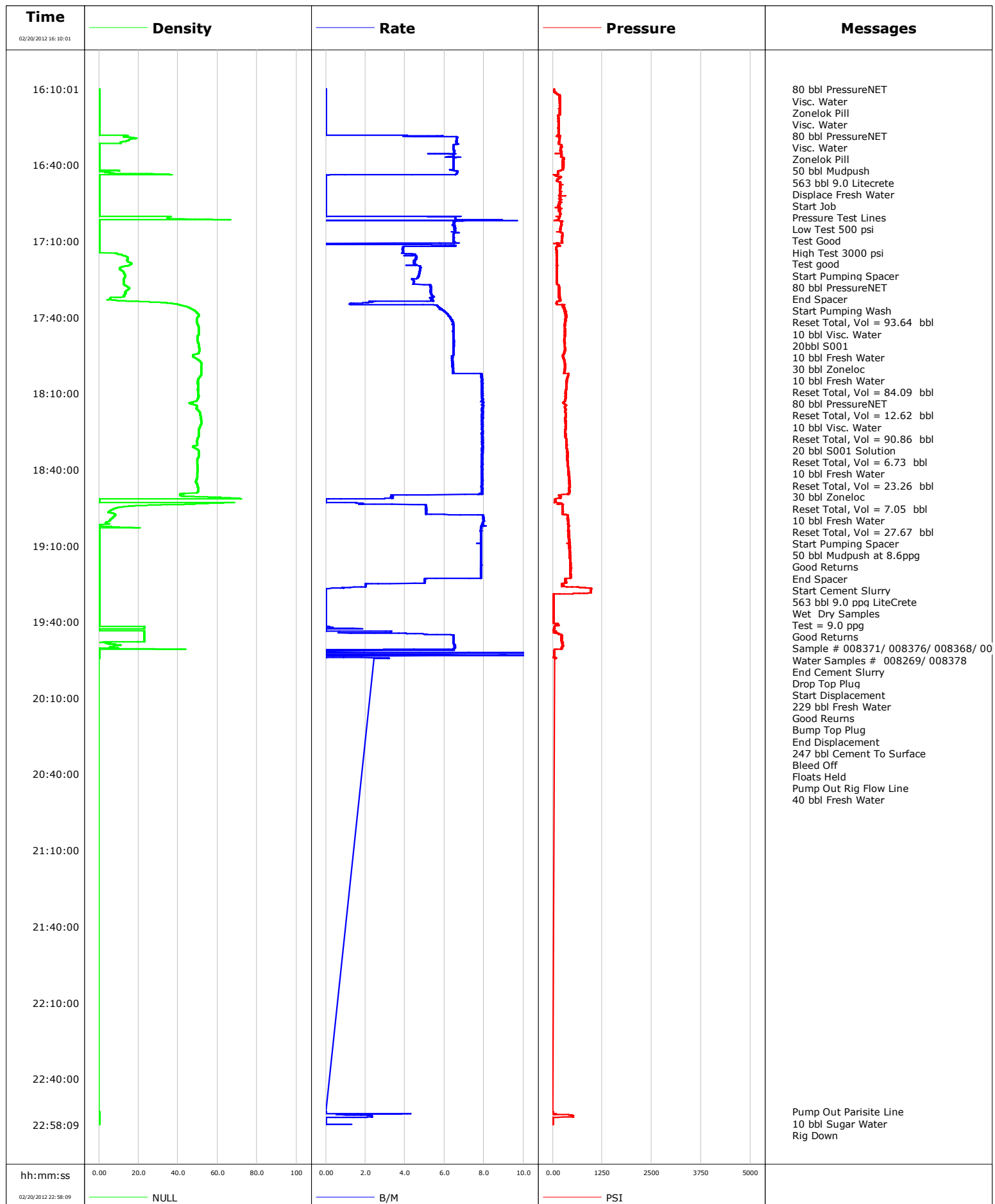


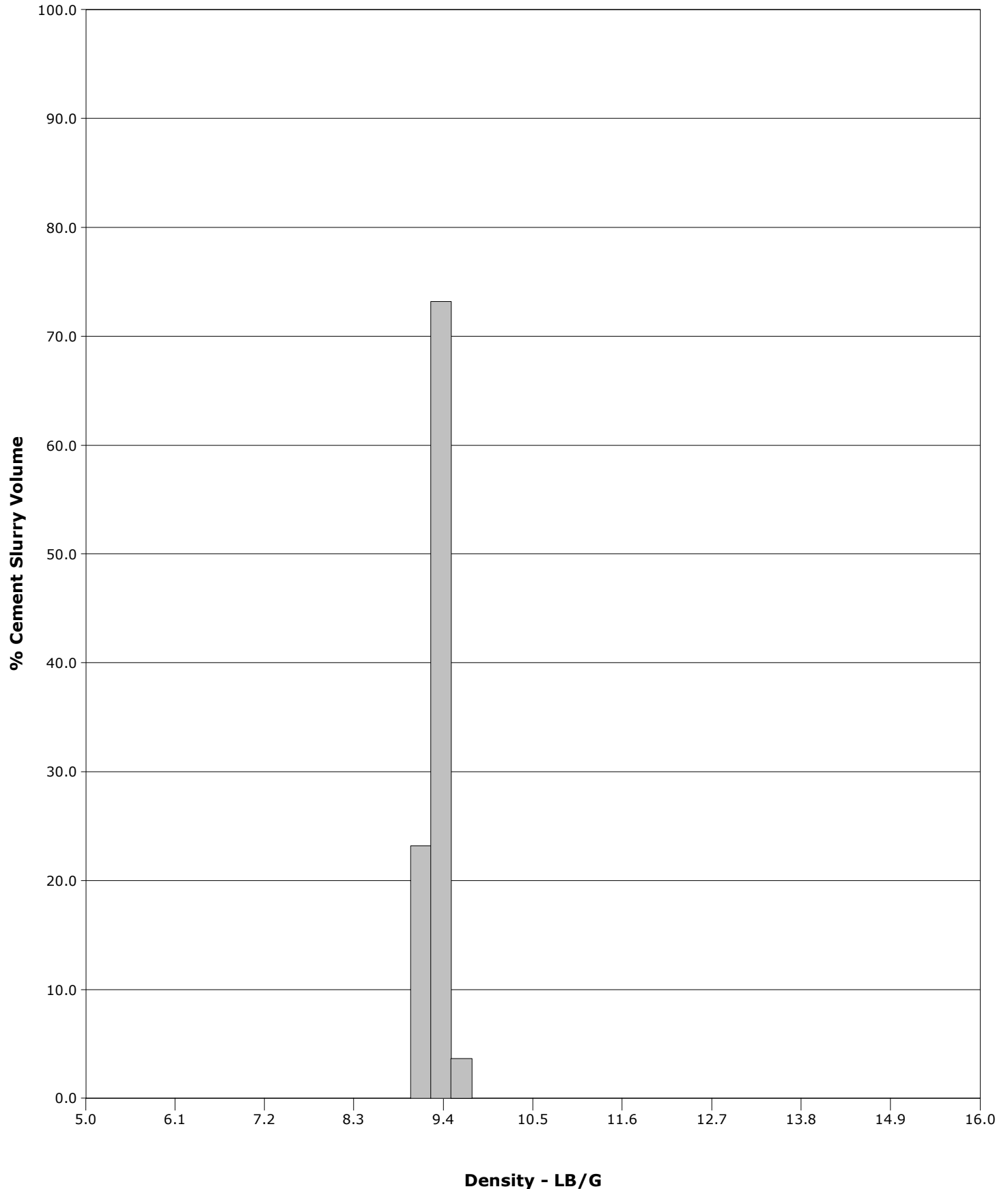
Well	SG WD11A-19	Client	Encana
Field	Story Gulch	SIR No.	C0BA-00140
Engineer	Jordan Moreland	Job Type	9 5/8 Surface
Country	United States	Job Date	02-20-2012



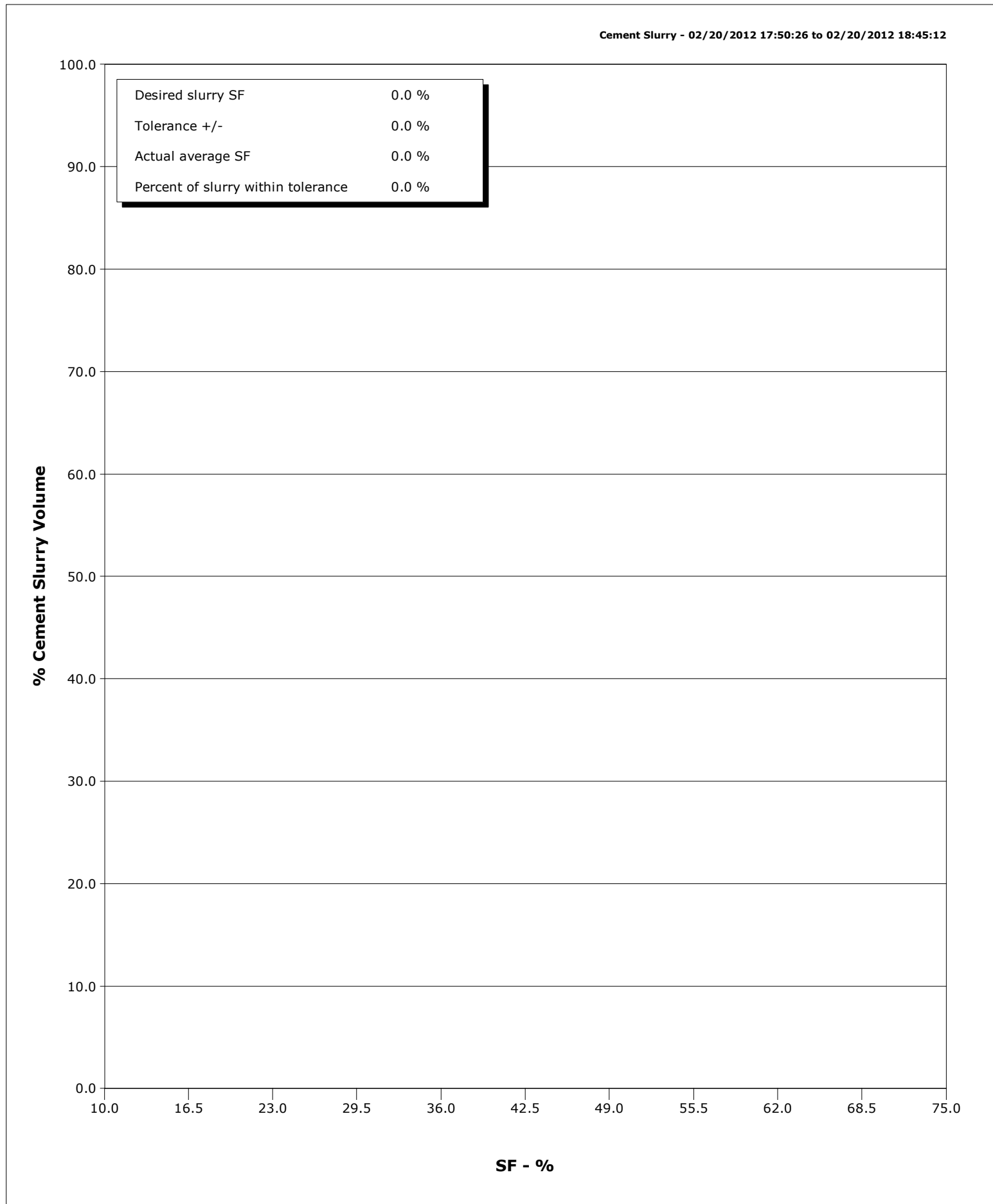
Well SG WD11A-19
Field Story Gulch
Engineer Jordan Moreland
Country United States

Client Encana
SIR No. C0BA-00140
Job Type 9 5/8 Surface
Job Date 02-20-2012

Cement Slurry - 02/20/2012 17:50:26 to 02/20/2012 18:45:12



Well	SG WD11A-19	Client	Encana
Field	Story Gulch	SIR No.	C0BA-00140
Engineer	Jordan Moreland	Job Type	9 5/8 Surface
Country	United States	Job Date	02-20-2012



				Customer Encana				Job Number COBA-00140										
Well SG WD11A-19 Sg WD11A-19				Location (legal)				Schlumberger Location GCO				Job Start Feb/20/2012						
Field Story Gulch			Formation Name/Type Shale			Deviation deg		Bit Size in		Well MD ft		Well TVD ft						
County Garfield			State/Province Colorado			BHP psi		BHST 115 degF		BHCT 95 degF		Pore Press. Gradient lb/gal						
Well Master 0631328653			API/UWI															
Rig Name Patterson 330		Drilled For Gas		Service Via Land		Casing/Liner												
						Depth, ft		Size, in		Weight, lb/ft		Grade		Thread				
Offshore Zone		Well Class New		Well Type Development		3010.0		9.6		36.0		J55		8RD				
						0.0		0.0		0.0								
Drilling Fluid Type Bentonite			Max. Density lb/gal		Plastic Viscosity cP		Tubing/Drill Pipe											
							T/D		Depth, ft		Size, in		Weight, lb/ft		Grade		Thread	
Service Line Cementing		Job Type 9 5/8 Surface																
Max. Allowed Tub. Press psi		Max. Allowed Ann. Press psi			WH Connection Single Cement head			Perforations/Open Hole										
								Top, ft		Bottom, ft		shot/ft		No. of Shots		Total Interval ft		
								ft		ft						Diameter in		
								ft		ft								
								Treat Down Casing		Displacement 129.0 bbl		Packer Type		Packer Depth ft				
								Tubing Vol. bbl		Casing Vol. 132.0 bbl		Annular Vol. 383.0 bbl		Openhole Vol. 633.0 bbl				
Casing/Tubing Secured <input type="checkbox"/>		1 Hole Vol. Circulated prior to Cement <input type="checkbox"/>			Casing Tools				Squeeze Job									
Lift Pressure psi				Shoe Type Float				Squeeze Type										
Pipe Rotated <input type="checkbox"/>		Pipe Reciprocated <input type="checkbox"/>			Shoe Depth 3010.0 ft				Tool Type									
No. Centralizers			Top Plugs 1		Bottom Plugs		Stage Tool Type				Tool Depth ft							
Cement Head Type Single				Stage Tool Depth ft				Tail Pipe Size in										
Job Scheduled For Feb/20/2012			Arrived on Location Feb/20/2012			Leave Location Feb/20/2012			Collar Type Float				Tail Pipe Depth ft					
									Collar Depth 2967.0 ft				Sqz. Total Vol. bbl					
Date	Time 24-hr clock	Treating Pressure PSI	Flow Rate B/M	Density NULL	Volume BBL	Message												
02/20/2012	16:10:01	30	0.0	0	0.0	Started Acquisition												
02/20/2012	16:10:11	29	0.0	0	0.0	80 bbl PressureNET												
02/20/2012	16:10:12	29	0.0	0	0.0	80 bbl PressureNET												
02/20/2012	16:10:14	29	0.0	0	0.0	Start Job												
02/20/2012	16:10:17	29	0.0	0	0.0	Pressure Test Lines												
02/20/2012	16:10:18	29	0.0	0	0.0	Low Test 500 psi												
02/20/2012	16:10:19	29	0.0	0	0.0	High Test 3000 psi												
02/20/2012	16:11:35	74	0.0	0	0.2	Start Pumping Spacer												
02/20/2012	16:11:36	74	0.0	0	0.3	80 bbl PressureNET												
02/20/2012	16:12:01	119	0.0	0	1.4													
02/20/2012	16:14:01	183	0.0	0	12.2													
02/20/2012	16:16:01	172	0.0	0	23.5													
02/20/2012	16:18:01	176	0.0	0	34.8													
02/20/2012	16:20:01	173	0.0	0	46.1													
02/20/2012	16:22:01	145	0.0	0	57.4													
02/20/2012	16:24:01	152	0.0	0	68.7													
02/20/2012	16:26:01	149	0.0	0	80.0													
02/20/2012	16:28:01	139	0.0	0	91.3													
02/20/2012	16:28:23	142	4.1	14	93.4	End Spacer												
02/20/2012	16:28:25	190	5.6	14	93.5	Start Pumping Wash												
02/20/2012	16:28:26	190	5.6	15	93.6	Reset Total, Vol = 93.64 bbl												

Well SG WD11A-19 Sg WD11A-19			Field Story Gulch		Job Start Feb/20/2012		Customer Encana		Job Number COBA-00140	
Date	Time 24-hr clock	Treating Pressure PSI		Flow Rate B/M	Density NULL		Volume BBL		Message	
02/20/2012	16:28:34	189		5.9	15		94.4		20bbl S001	
02/20/2012	16:30:01	166		6.6	15		103.2			
02/20/2012	16:32:01	206		6.5	0		115.8			
02/20/2012	16:34:01	199		6.5	0		128.4			
02/20/2012	16:36:01	218		6.5	0		141.1			
02/20/2012	16:37:08	260		6.5	0		148.1		10 bbl Fresh Water	
02/20/2012	16:37:09	269		6.5	0		148.2		30 bbl Zoneloc	
02/20/2012	16:38:01	267		6.4	0		153.7			
02/20/2012	16:40:01	279		6.5	0		166.3			
02/20/2012	16:41:46	246		6.5	0		177.3		10 bbl Fresh Water	
02/20/2012	16:41:50	251		6.5	0		177.7		Reset Total, Vol = 84.09 bbl	
02/20/2012	16:42:01	203		6.4	0		178.9			
02/20/2012	16:43:48	17		2.0	0		190.1		80 bbl PressureNET	
02/20/2012	16:43:50	52		1.0	0		190.4		Reset Total, Vol = 12.62 bbl	
02/20/2012	16:44:01	95		0.0	0		191.5			
02/20/2012	16:46:01	130		0.0	0		199.4			
02/20/2012	16:48:01	194		0.0	0		209.8			
02/20/2012	16:50:01	189		0.0	0		221.1			
02/20/2012	16:52:01	192		0.0	0		232.4			
02/20/2012	16:54:01	187		0.0	0		243.7			
02/20/2012	16:56:01	142		0.0	0		255.0			
02/20/2012	16:58:01	179		0.0	0		266.2			
02/20/2012	17:00:01	183		0.0	0		277.5			
02/20/2012	17:00:37	159		6.5	35		281.0		10 bbl Visc. Water	
02/20/2012	17:00:39	155		6.5	35		281.2		Reset Total, Vol = 90.86 bbl	
02/20/2012	17:01:43	52		3.9	0		287.9		20 bbl S001 Solution	
02/20/2012	17:02:01	161		7.5	0		289.7			
02/20/2012	17:04:01	210		6.5	0		302.4			
02/20/2012	17:05:25	194		6.5	0		311.2		10 bbl Fresh Water	
02/20/2012	17:06:01	194		6.5	0		315.0			
02/20/2012	17:06:31	199		6.5	0		318.1		30 bbl Zoneloc	
02/20/2012	17:06:32	199		6.5	0		318.2		Reset Total, Vol = 7.05 bbl	
02/20/2012	17:08:01	237		6.5	0		327.6			
02/20/2012	17:10:01	225		6.5	0		340.2			
02/20/2012	17:10:54	128		0.0	0		345.8		10 bbl Fresh Water	
02/20/2012	17:10:55	128		0.0	0		345.9		Reset Total, Vol = 27.67 bbl	
02/20/2012	17:12:01	184		6.5	0		352.8			
02/20/2012	17:12:48	93		3.9	0		354.5		Start Pumping Spacer	
02/20/2012	17:12:49	92		3.9	0		354.5		50 bbl Mudpush at 8.6ppg	
02/20/2012	17:14:01	98		3.9	0		356.9			
02/20/2012	17:16:01	103		4.6	14		364.5			
02/20/2012	17:18:01	102		4.5	15		373.6			
02/20/2012	17:20:01	105		4.8	12		382.6			
02/20/2012	17:22:01	104		4.7	12		392.2			
02/20/2012	17:24:01	105		4.7	13		401.6			
02/20/2012	17:26:01	102		4.4	13		410.6			
02/20/2012	17:28:01	159		5.3	14		420.2			
02/20/2012	17:30:01	153		5.3	13		430.9			
02/20/2012	17:32:01	168		5.5	12		441.6			
02/20/2012	17:34:01	110		2.3	26		451.4			
02/20/2012	17:36:01	264		5.7	45		458.5			
02/20/2012	17:38:01	329		6.1	49		470.3			
02/20/2012	17:40:01	323		6.3	50		482.6			
02/20/2012	17:42:01	312		6.4	49		495.3			

Well SG WD11A-19 Sg WD11A-19			Field Story Gulch		Job Start Feb/20/2012	Customer Encana		Job Number C0BA-00140
Date	Time 24-hr clock	Treating Pressure PSI		Flow Rate B/M	Density NULL	Volume BBL	Message	
02/20/2012	17:46:01	310		6.5	50	521.1		
02/20/2012	17:48:01	303		6.4	50	534.0		
02/20/2012	17:50:01	296		6.5	50	546.9		
02/20/2012	17:50:22	299		6.5	50	549.2	End Spacer	
02/20/2012	17:50:26	308		6.4	50	549.6	Start Cement Slurry	
02/20/2012	17:50:28	295		6.5	50	549.8	563 bbl 9.0 ppg LiteCrete	
02/20/2012	17:50:29	309		6.5	50	549.9	Test = 9.0 ppg	
02/20/2012	17:52:01	308		6.5	51	559.8		
02/20/2012	17:54:01	293		6.4	51	572.7		
02/20/2012	17:56:01	265		6.4	49	585.6		
02/20/2012	17:58:01	303		6.4	52	598.3		
02/20/2012	18:00:01	305		6.4	52	611.2		
02/20/2012	18:02:01	292		6.4	52	624.0		
02/20/2012	18:04:01	360		7.9	51	639.5		
02/20/2012	18:06:01	341		7.9	50	655.3		
02/20/2012	18:08:01	339		7.9	50	671.1		
02/20/2012	18:10:01	314		7.9	50	686.9		
02/20/2012	18:12:01	321		7.9	50	702.7		
02/20/2012	18:14:01	280		7.9	46	718.6		
02/20/2012	18:16:01	320		7.9	49	734.4		
02/20/2012	18:18:01	326		7.9	51	750.2		
02/20/2012	18:20:01	314		7.9	51	766.0		
02/20/2012	18:22:01	326		7.9	52	781.8		
02/20/2012	18:24:01	322		7.9	51	797.7		
02/20/2012	18:26:01	326		7.9	51	813.5		
02/20/2012	18:28:01	339		7.9	50	829.3		
02/20/2012	18:30:01	348		7.9	50	845.1		
02/20/2012	18:32:01	358		7.9	50	860.9		
02/20/2012	18:34:01	375		7.9	51	876.7		
02/20/2012	18:36:01	365		7.9	50	892.5		
02/20/2012	18:38:01	376		7.9	50	908.3		
02/20/2012	18:40:01	390		7.9	50	924.1		
02/20/2012	18:42:01	402		7.9	50	939.9		
02/20/2012	18:44:01	424		7.9	49	955.7		
02/20/2012	18:45:12	429		7.9	49	965.0	End Cement Slurry	
02/20/2012	18:46:01	421		7.9	50	971.5		
02/20/2012	18:48:01	422		7.9	50	987.3		
02/20/2012	18:50:01	150		3.3	41	1002.7		
02/20/2012	18:52:01	52		0.0	0	1007.6		
02/20/2012	18:54:01	247		5.1	28	1010.1		
02/20/2012	18:56:01	245		5.1	6	1020.2		
02/20/2012	18:58:01	381		8.0	8	1031.0	Drop Top Plug	
02/20/2012	18:58:05	370		8.0	8	1031.5	Start Displacement	
02/20/2012	18:58:06	381		8.0	8	1031.7	229 bbl Fresh Water	
02/20/2012	19:00:01	383		8.0	6	1046.9		
02/20/2012	19:02:01	404		7.9	0	1062.8		
02/20/2012	19:04:01	407		7.8	0	1078.6		
02/20/2012	19:06:01	407		7.9	0	1094.3		
02/20/2012	19:08:01	413		7.8	0	1109.9		
02/20/2012	19:10:01	432		7.8	0	1125.6		
02/20/2012	19:12:01	421		7.9	0	1141.3		
02/20/2012	19:14:01	442		7.8	0	1157.0		
02/20/2012	19:16:01	436		7.8	0	1172.7		
02/20/2012	19:18:01	453		7.8	0	1188.4		

Well SG WD11A-19 Sg WD11A-19			Field Story Gulch		Job Start Feb/20/2012	Customer Encana		Job Number C0BA-00140
Date	Time 24-hr clock	Treating Pressure PSI	Flow Rate B/M	Density NULL	Volume BBL	Message		
02/20/2012	19:22:01	445	7.8	0	1219.8			
02/20/2012	19:24:01	335	5.0	0	1232.4			
02/20/2012	19:26:01	231	2.0	0	1239.1			
02/20/2012	19:27:53	966	0.0	0	1240.3	Bump Top Plug		
02/20/2012	19:28:01	966	0.0	0	1240.3			
02/20/2012	19:30:01	21	0.0	0	1240.3			
02/20/2012	19:32:01	21	0.0	0	1240.3			
02/20/2012	19:34:01	21	0.0	0	1240.3			
02/20/2012	19:36:01	21	0.0	0	1240.3			
02/20/2012	19:38:01	21	0.0	0	1240.3			
02/20/2012	19:40:01	21	0.0	0	1240.3			
02/20/2012	19:40:02	21	0.0	0	1240.3	End Displacement		
02/20/2012	19:40:03	21	0.0	0	1240.3	247 bbl Cement To Surface		
02/20/2012	19:42:01	42	0.0	23	1240.3			
02/20/2012	19:43:51	80	3.3	23	1240.9	Pump Out Rig Flow Line		
02/20/2012	19:44:01	78	3.3	23	1241.5			
02/20/2012	19:46:01	225	6.4	23	1251.4			
02/20/2012	19:48:01	235	6.5	9	1264.3			
02/20/2012	19:50:01	233	6.5	7	1277.3			
02/20/2012	19:52:01	30	0.0	0	1283.9			
02/20/2012	19:54:01	22	0.0	0	1292.4			
02/20/2012	22:53:04	1	0.0	0	1324.5	Pump Out Parisite Line		
02/20/2012	22:53:05	1	0.0	0	1324.5	10 bbl Sugar Water		
02/20/2012	22:54:01	80	1.4	0	1325.3			
02/20/2012	22:56:01	5	0.0	0	1327.8			

Post Job Summary

Average Pump Rates, bbl/min					Volume of Fluid Injected, bbl							
Slurry 6.3	N2	Mud	Maximum Rate 19.5	Total Slurry 1297.0	Mud 0.0	Spacer 288.0	N2					
Treating Pressure Summary, psi					Breakdown Fluid							
Maximum 977	Final 9	Average 150	Bump Plug to	Breakdown	Type	Volume bbl	Density lb/gal					
Avg. N2 Percent %	Designed Slurry Volume 0.0 bbl	Displacement 209.4 bbl	Mix Water Temp 65 degF	Cement Circulated to Surface?		Volume bbl						
				Washed Thru Perfs		To ft						
Customer or Authorized Representative Randy Burke			Schlumberger Supervisor Jordan Moreland			Circulation Lost	Job Completed					
						-	-					