

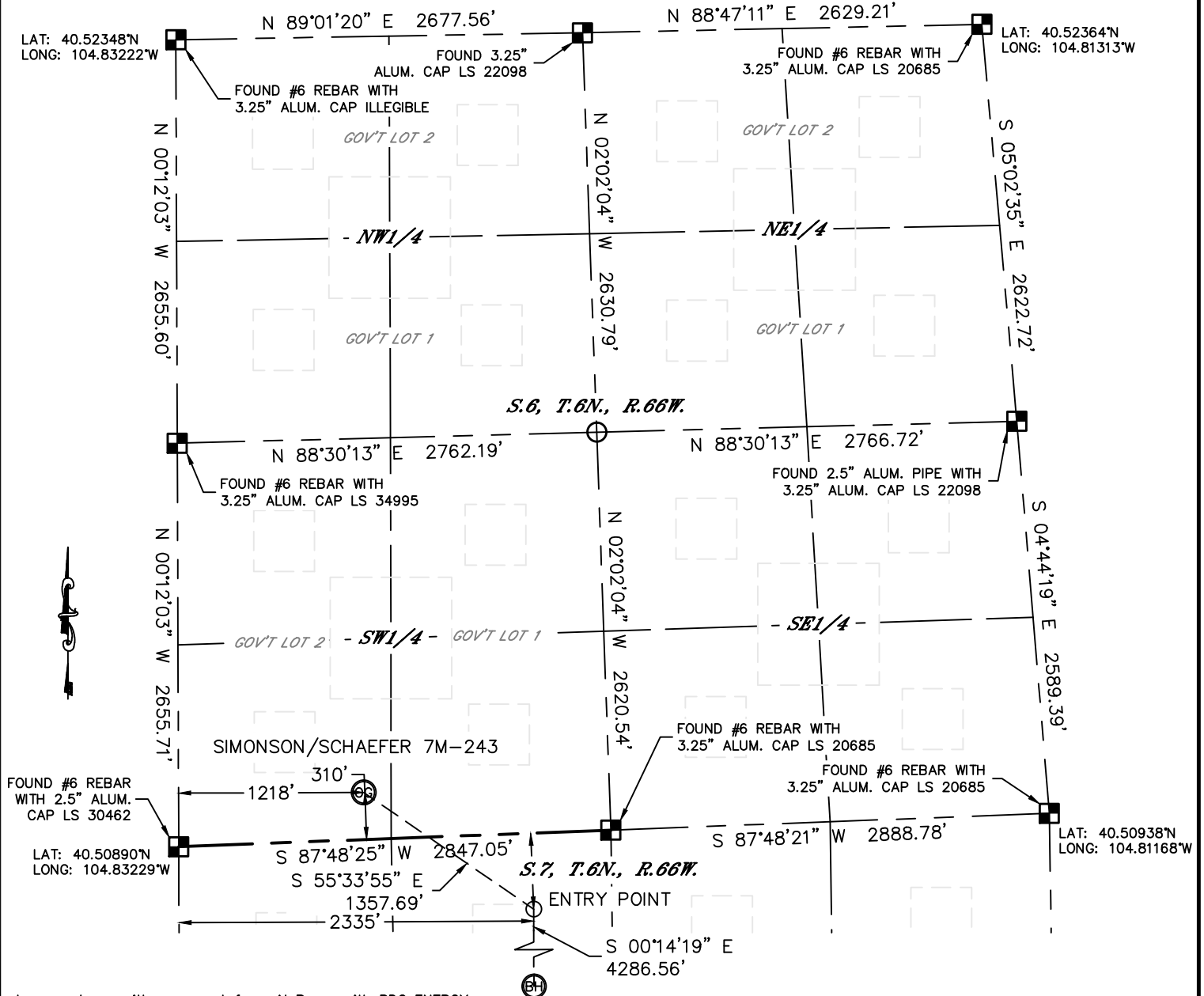


Lat40°, Inc. 1635 Foxtrail Drive, Suite 325 Loveland, CO 970-776-3321

WELL LOCATION CERTIFICATE

THIS MAP DOES NOT REPRESENT A BOUNDARY SURVEY

SECTION: 6
TOWNSHIP: 6N
RANGE: 66W



In accordance with a request from Al Bragg with PDC ENERGY

Lat40°, Inc. has determined the surface location of the SIMONSEN/SCHAEFER 7M-243 to be 310' from the SOUTH line and 1218' from the WEST line as measured at right angles from the section lines of Section 6, Township 6 North, Range 66 West and the bottom hole to be 500' from the SOUTH line and 2335' from the WEST line as measured at right angles from the section lines of Section 7, Township 6 North, Range 66 West of the Sixth Principal Meridian, County of Weld, State of Colorado.

I hereby state that this Well Location Certificate was prepared by me, or under my direct supervision, that the fieldwork was completed on 6/6/2012, for and on behalf of PDC ENERGY. That this is not a Land Survey Plat or an Improvement Survey Plat, and that it is not to be relied upon for establishment of fence, building, or other future improvement lines.

NOTE:

- 1) Bearings shown are Grid Bearings of the Colorado State Plane Coordinate System, North Zone, North American Datum 1983/2007. The lineal dimensions as contained herein are based upon the "U.S. Survey Foot."
- 2) Ground elevations are based on an observed GPS elevation (NAVD 1988 DATUM).
- 3) IMPROVEMENTS: See LOCATION DRAWING for all visible improvements within 400' of disturbed area.
- 4) SURFACE USE: CROPLAND/PIVOT CORNER
- 5) INSTRUMENT OPERATOR: ADAM KELLY

SURFACE LOCATION

LAT: 40.50986°N
LONG: 104.82791°W
PDOP: 1.9
ELEV: 4891'
1/4,1/4: SW1/4SW1/4 (GOV'T LOT 2)
NEAREST PROPERTY LINE: 88' SW

ENTRY POINT

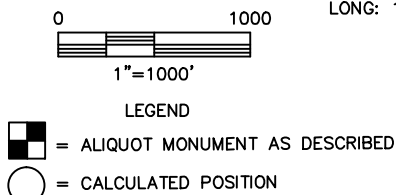
LAT: 40.50773°N
LONG: 104.82390°W

BOTTOM HOLE

LAT: 40.49596°N
LONG: 104.82396°W

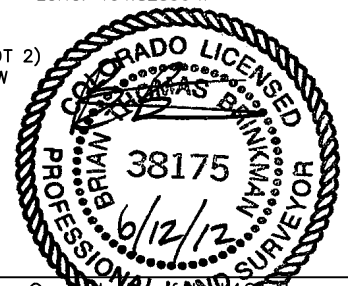
NOTE

According to Colorado law, you must commence any legal action based upon any defect in this W.L.C. within three years after you discover such defect. In no event, may any action based upon any defect in this survey be commenced more than ten years after the date of the certificate shown hereon. (13-80-105 C.R.S.)



SHEET 1 OF 2

Brian T. Brinkman—On behalf of Lat40°, Inc.
Colorado Licensed Professional Land Surveyor No. 38175
DATE: 6/11/2012
PROJECT#: 2010129



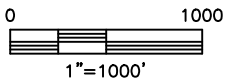
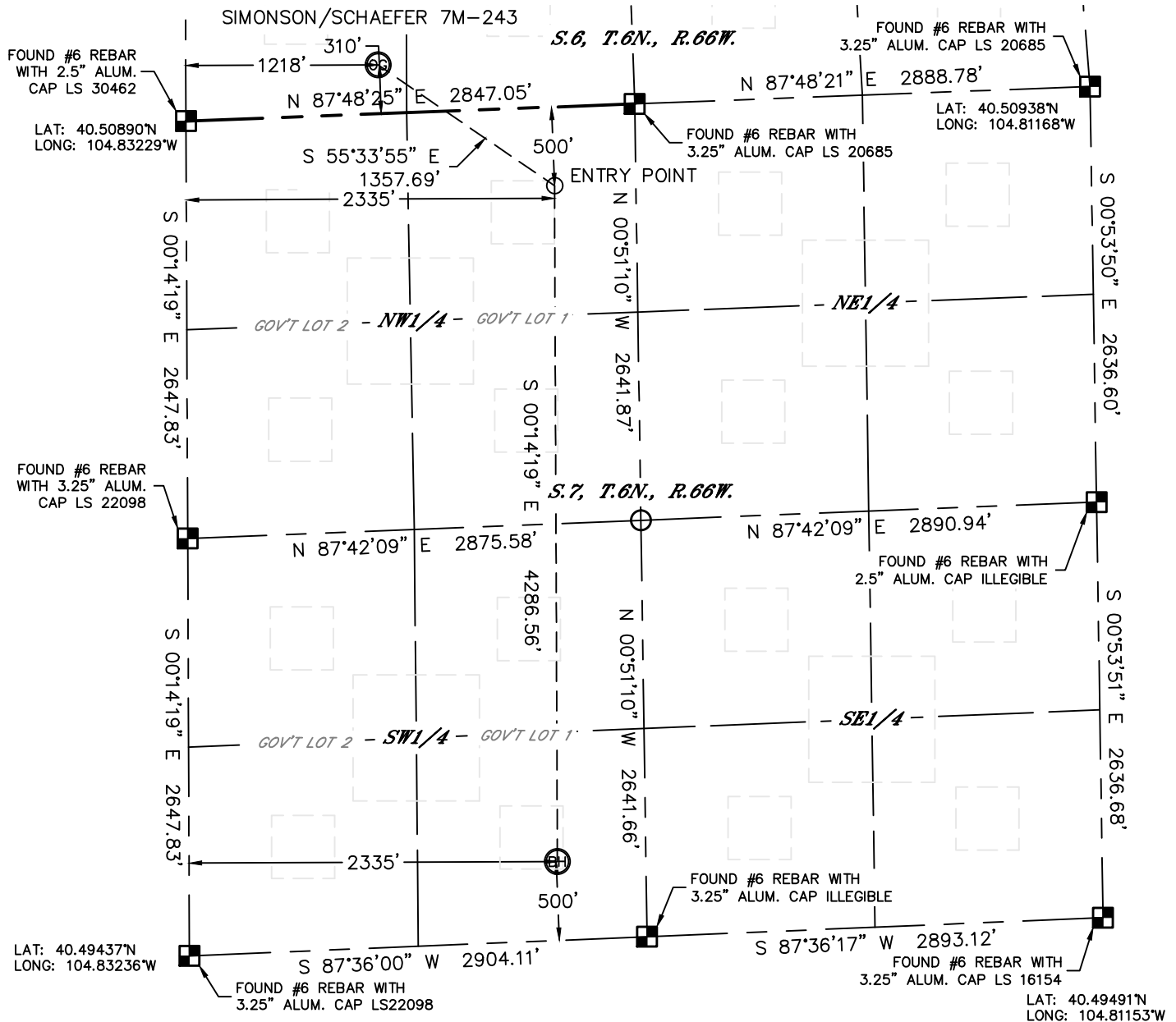


Lat40°, Inc. 1635 Foxtrail Drive, Suite 325 Loveland, CO 970-776-3321

WELL LOCATION CERTIFICATE

THIS MAP DOES NOT REPRESENT A BOUNDARY SURVEY

SECTION: 6
TOWNSHIP: 6N
RANGE: 66W



NOTE

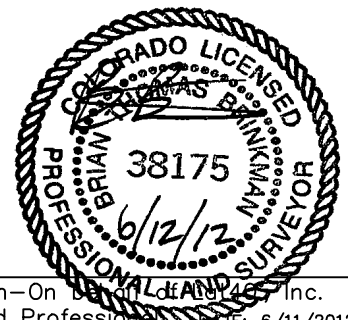
According to Colorado law, you must commence any legal action based upon any defect in this W.L.C. within three years after you discover such defect. In no event, may any action based upon any defect in this survey be commenced more than ten years after the date of the certificate shown hereon. (13-80-105 C.R.S.)

LEGEND

- = ALIQUOT MONUMENT AS DESCRIBED
- = CALCULATED POSITION

SHEET 2 OF 2

Brian T. Brinkman—On behalf of Lat40°, Inc.
Colorado Licensed Professional Land Surveyor No. 38175
DATE: 6/11/2012
PROJECT#: 2010129



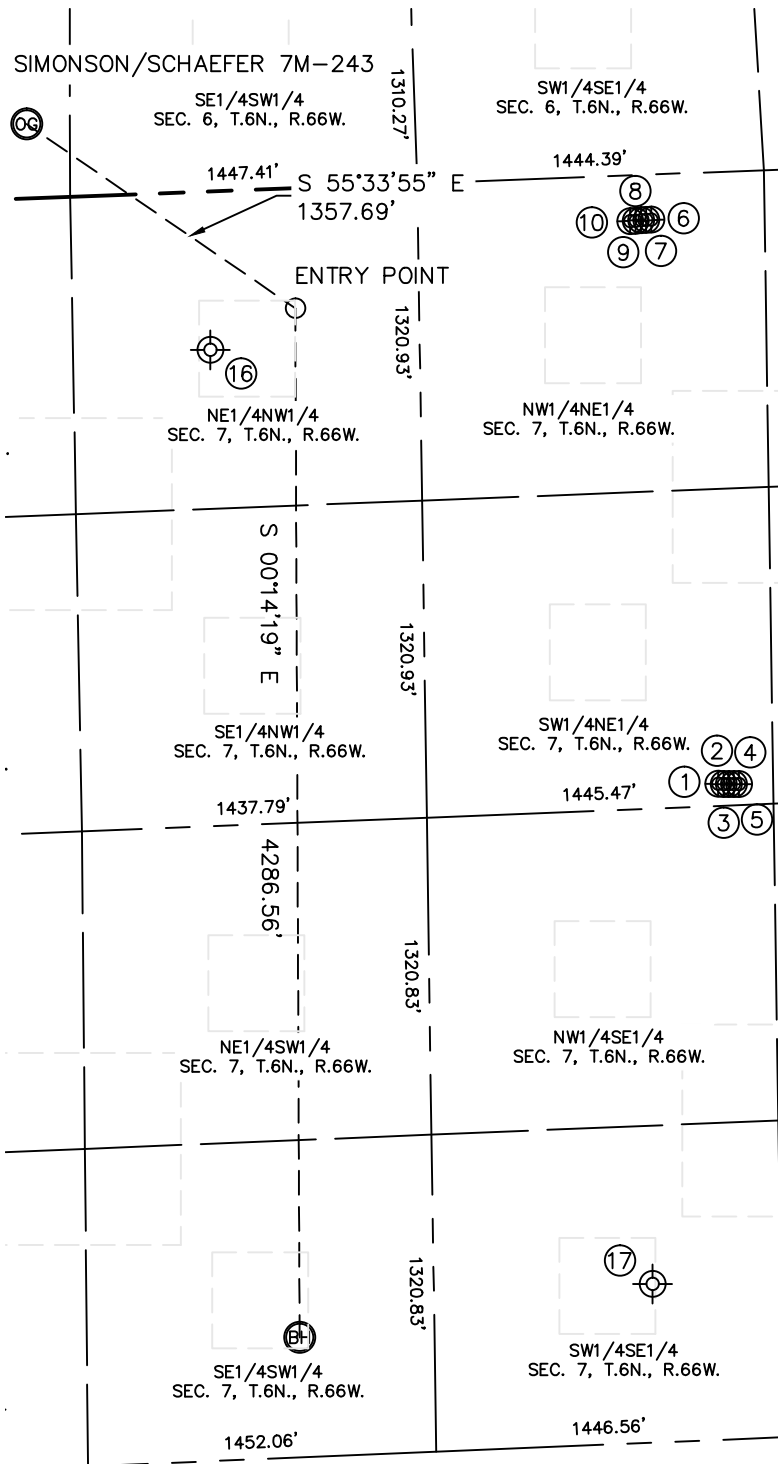


Lat40°, Inc. 1635 Foxtrail Drive, Suite 325 Loveland, CO 970-776-3321

SITE SKETCH

SIMONSON/SCHAEFER 7M-243

SECTION: 6
TOWNSHIP: 6N
RANGE: 66W



①
SCHAEFER 70D
SW1/4NE1/4
2547' FNL
1674' FEL
LAT-40.50225°N
LONG-104.81762°W
PDOP:1.8
ELEV: 4858'

②
SCHAEFER 33-7D
SW1/4NE1/4
2549' FNL
1652' FEL
LAT-40.50225°N
LONG-104.81755°W
PDOP: 2.0
ELEV: 4858'

③
SCHAEFER 32-7D
SW1/4NE1/4
2550' FNL
1631' FEL
LAT-40.50225°N
LONG-104.81747°W
PDOP: 1.8
ELEV: 4858'

④
SCHAEFER 7S
SW1/4NE1/4
2550' FNL
1609' FEL
LAT-40.50225°N
LONG-104.81739°W
PDOP:1.8
ELEV: 4858'

⑤
SCHAEFER 42-7D
SW1/4NE1/4
2551' FNL
1587' FEL
LAT-40.50225°N
LONG-104.81731°W
PDOP: 1.9
ELEV: 4858'

⑥
SCHAEFER 7RD
NW1/4NE1/4
189' FNL
1916' FEL
LAT-40.50871°N
LONG-104.81856°W
PDOP: 1.8
ELEV: 4873'

⑦
SCHAEFER 41-7D
NW1/4NE1/4
189' FNL
1937' FEL
LAT-40.50870°N
LONG-104.81864°W
PDOP:1.9
ELEV: 4873'

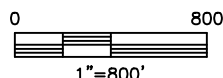
⑧
SCHAEFER 7CD
NW1/4NE1/4
189' FNL
1959' FEL
LAT-40.50870°N
LONG-104.81872°W
PDOP: 2.5
ELEV: 4873'

⑨
SCHAEFER 31-7D
NW1/4NE1/4
191' FNL
1982' FEL
LAT-40.50869°N
LONG-104.81880°W
PDOP: 4873
ELEV: 2.5'

⑩
SCHAEFER 7MD
NW1/4NE1/4
191' FNL
2004' FEL
LAT-40.50869°N
LONG-104.81888°W
PDOP: 2.3
ELEV: 4873'

⑪
SWANSON 1-7
PLUGGED & ABANDONED
NE1/4NW1/4
660' FNL (COGCC)
1980' FNL (COGCC)
LAT-40.507223°N (COGCC)
LONG-104.825094°W (COGCC)
PDOP: N/A
ELEV: 4888' (COGCC)

⑫
FRYE 1
PLUGGED & ABANDONED
SW1/4SE1/4
660' FSL (COGCC)
1980' FEL (COGCC)
LAT-40.496633°N (COGCC)
LONG-104.818664°W (COGCC)
PDOP: N/A
ELEV: 4827' (COGCC)



DATE: 6/11/2012
PROJECT#: 2010129