
WPX ENERGY ROCKY MOUNTAIN LLC-EBUS

**KP 24-18
KOKOPELLI
Garfield County , Colorado**

Cement Surface Casing
09-Jun-2012

Post Job Report

The Road to Excellence Starts with Safety

Sold To #: 300721	Ship To #: 2929046	Quote #:	Sales Order #: 9537828
Customer: WPX ENERGY ROCKY MOUNTAIN LLC-EBUS	Customer Rep: Valad, Gary		
Well Name: KP	Well #: 24-18	API/UWI #: 05-045-20626	
Field: KOKOPELLI	City (SAP): SILT	County/Parish: Garfield	State: Colorado
Lat: N 39.522 deg. OR N 39 deg. 31 min. 20.273 secs.	Long: W 107.595 deg. OR W -108 deg. 24 min. 18.889 secs.		
Contractor: NABORS 574	Rig/Platform Name/Num: NABORS 574		
Job Purpose: Cement Surface Casing			
Well Type: Development Well	Job Type: Cement Surface Casing		
Sales Person: MAYO, MARK	Srv Supervisor: NICKLE, RYON	MBU ID Emp #: 454759	

Job Personnel

HES Emp Name	Exp Hrs	Emp #	HES Emp Name	Exp Hrs	Emp #	HES Emp Name	Exp Hrs	Emp #
ANGLESTEIN, TROY Edward WM	0.0	436099	BORSZICH, STEPHEN A	0.0	412388	NICKLE, RYON	0.0	454759
ROSE, BENJAMIN Keith	0.0	487022	WADE, LOGAN D	0.0	488896			

Equipment

HES Unit #	Distance-1 way	HES Unit #	Distance-1 way	HES Unit #	Distance-1 way	HES Unit #	Distance-1 way
10248065	60 mile	10951249	60 mile	11021972	60 mile	11027039	60 mile
11560046	60 mile	11808833	60 mile				

Job Hours

Date	On Location Hours	Operating Hours	Date	On Location Hours	Operating Hours	Date	On Location Hours	Operating Hours

TOTAL	Total is the sum of each column separately							
-------	--------------------------------------------	--	--	--	--	--	--	--

Job

Formation Name	Top	Bottom	Called Out	Date	Time	Time Zone
Formation Depth (MD)			On Location	08 - Jun - 2012	14:30	MST
Form Type		BHST	Job Started	08 - Jun - 2012	18:30	MST
Job depth MD	1330. ft	Job Depth TVD	Job Started	08 - Jun - 2012	22:50	MST
Water Depth		Wk Ht Above Floor	Job Completed	09 - Jun - 2012	00:00	MST
Perforation Depth (MD)	From	To	Departed Loc	08 - Jun - 2012	01:30	MST

Well Data

Description	New / Used	Max pressure psig	Size in	ID in	Weight lbm/ft	Thread	Grade	Top MD ft	Bottom MD ft	Top TVD ft	Bottom TVD ft
-------------	------------	-------------------	---------	-------	---------------	--------	-------	-----------	--------------	------------	---------------

Sales/Rental/3rd Party (HES)

Description	Qty	Qty uom	Depth	Supplier
PLUG,CMTG,TOP,9 5/8,HWE,8.16 MIN/9.06 MA	1	EA		

Tools and Accessories

Type	Size	Qty	Make	Depth	Type	Size	Qty	Make	Depth	Type	Size	Qty	Make
Guide Shoe					Packer					Top Plug			
Float Shoe					Bridge Plug					Bottom Plug			
Float Collar					Retainer					SSR plug set			
Insert Float										Plug Container			
Stage Tool										Centralizers			

Miscellaneous Materials

Gelling Agt	Conc	Surfactant	Conc	Acid Type	Qty	Conc	%
Treatment Fld	Conc	Inhibitor	Conc	Sand Type	Size		Qty

Fluid Data

Stage/Plug #: 1	Fluid #	Stage Type	Fluid Name	Qty	Qty uom	Mixing Density lbm/gal	Yield ft3/sk	Mix Fluid Gal/sk	Rate bbl/min	Total Mix Fluid Gal/sk
-----------------	---------	------------	------------	-----	---------	------------------------	--------------	------------------	--------------	------------------------

Stage/Plug #: 1									
Fluid #	Stage Type	Fluid Name	Qty	Qty uom	Mixing Density lbm/gal	Yield ft ³ /sk	Mix Fluid Gal/sk	Rate bbl/min	Total Mix Fluid Gal/sk
1	Fresh Water		20.00	bbl	8.33	.0	.0	.0	
2	VersaCem Lead	VERSACEM (TM) SYSTEM (452010)	195.0	sacks	12.3	2.38	13.75		13.75
	13.75 Gal	FRESH WATER							
3	VersaCem Tail	VERSACEM (TM) SYSTEM (452010)	160.0	sacks	12.8	2.11	11.75		11.75
	11.75 Gal	FRESH WATER							
4	Displacement Fluid		100.00	bbl	8.34	.0	.0	.0	
Calculated Values		Pressures		Volumes					
Displacement		Shut In: Instant		Lost Returns		Cement Slurry		Pad	
Top Of Cement		5 Min		Cement Returns		Actual Displacement		Treatment	
Frac Gradient		15 Min		Spacers		Load and Breakdown		Total Job	
Rates									
Circulating		Mixing		Displacement		Avg. Job			
Cement Left In Pipe	Amount	0 ft	Reason	Shoe Joint					
Frac Ring # 1 @	ID	Frac ring # 2 @	ID	Frac Ring # 3 @	ID	Frac Ring # 4 @	ID		
The Information Stated Herein Is Correct				Customer Representative Signature					

The Road to Excellence Starts with Safety

Sold To #: 300721	Ship To #: 2929046	Quote #:	Sales Order #: 9537828
Customer: WPX ENERGY ROCKY MOUNTAIN LLC-EBUS		Customer Rep: Valad, Gary	
Well Name: KP		Well #: 24-18	API/UWI #: 05-045-20626
Field: KOKOPELLI	City (SAP): SILT	County/Parish: Garfield	State: Colorado
Legal Description:			
Lat: N 39.522 deg. OR N 39 deg. 31 min. 20.273 secs.		Long: W 107.595 deg. OR W -108 deg. 24 min. 18.889 secs.	
Contractor: NABORS 574		Rig/Platform Name/Num: NABORS 574	
Job Purpose: Cement Surface Casing			Ticket Amount:
Well Type: Development Well		Job Type: Cement Surface Casing	
Sales Person: MAYO, MARK		Srv Supervisor: NICKLE, RYON	MBU ID Emp #: 454759

Activity Description	Date/Time	Cht #	Rate bbl/min	Volume bbl		Pressure psig		Comments
				Stage	Total	Tubing	Casing	
Call Out	06/08/2012 14:30							HES CEMENT CREW
Pre-Convoy Safety Meeting	06/08/2012 16:15							ALL HES CEMENT CREW
Crew Leave Yard	06/08/2012 16:30							
Arrive At Loc	06/08/2012 18:30							RIG RIGGING UP CASING CREW
Assessment Of Location Safety Meeting	06/08/2012 18:40							ALL HES CEMENT CREW
Other	06/08/2012 18:55							SPOT EQUIPMENT; 1 CEMENTERS F 450, 1 ELITE PUMPING UNIT, 1 660 BULK TRANSPORT, 1 400 BULK TRANSPORT
Pre-Rig Up Safety Meeting	06/08/2012 19:05							ALL HES CEMENT CREW
Pre-Job Safety Meeting	06/08/2012 22:20							ALL HES CEMENT CREW, RIG CREW, COMPANY REP, AVAILABLE 3RD PARTY EE'S
Start Job	06/08/2012 22:50							TD- 1337' TP- 1287' SHOE- 44.34' LJ - 36' OH- 13.5" SURFACE CASING- 9.625" 32.3#/FT H-40 MUD- 9.8 PPG
Other	06/08/2012 22:51		2	2			40.0	FILL LINES, FRESH WATER
Activity Description	Date/Time	Cht #	Rate bbl/min	Volume bbl		Pressure psig		Comments
				Stage	Total	Tubing	Casing	

Pressure Test	06/08/2012 22:54							STALL OUT @ 1886 PSI, HELD FOR 30 SEC. PRESSURE UP TO 4174 PSI HELD FOR 3 MIN, PRESSURE DROP TO 4138 PSI
Pump Spacer 1	06/08/2012 23:00		4	20			129.0	FRESH WATER
Pump Lead Cement	06/08/2012 23:08		8	82.6			338.0	195 SKS; 12.3 PPG, 2.38 FT3/SK, 13.75 GAL/SK
Pump Tail Cement	06/08/2012 23:21		8	60.1			326.0	160 SKS; 12.8 PPG, 2.11 FT3/SK, 11.75 GAL/SK
Shutdown	06/08/2012 23:28							WASH UP ON TOP OF PLUG PER CO REP
Drop Top Plug	06/08/2012 23:35							CO REP VERIFIED PLUG LAUNCHED
Pump Displacement	06/08/2012 23:35		10	85.6			572.0	FRESH WATER
Slow Rate	06/08/2012 23:49		2	15			432.0	
Bump Plug	06/08/2012 23:55						937.0	
Check Floats	06/08/2012 23:58							FLOATS HELD, RETURNED 1 BBLS H2O
End Job	06/09/2012 00:00							PIPE WAS NOT MOVED, GOOD RETURNS THROUGHOUT, 25 BBLS CEMENT TO SURFACE
Post-Job Safety Meeting (Pre Rig-Down)	06/09/2012 00:05							ALL HES CEMENT CREW
Pre-Convoy Safety Meeting	06/09/2012 01:15							ALL HES CEMENT CREW
Crew Leave Location	06/09/2012 01:30							THANK YOU FOR USING HALLIBURTON CEMENTING, RYON NICKLE AND CREW

HALLIBURTON

Water Analysis Report

Company: WPX

Submitted by: RYON NICKLE

Attention: LAB

Lease: NABORS 574

Well #: KP 24-18

Date: 6/8/2012

Date Rec.: 6/8/2012

S.O.#: 9537828

Job Type: SURFACE

Specific Gravity	<i>MAX</i>	1
pH	<i>8</i>	8
Potassium (K)	<i>5000</i>	0 Mg / L
Hrdness	<i>500</i>	420 Mg / L
Iron (FE2)	<i>300</i>	0 Mg / L
Chlorides (Cl)	<i>3000</i>	0 Mg / L
Sulfates (SO ₄)	<i>1500</i>	<200 Mg / L
Temp	<i>40-80</i>	61 Deg
Total Dissolved Solids		340 Mg / L

Respectfully: RYON NICKLE

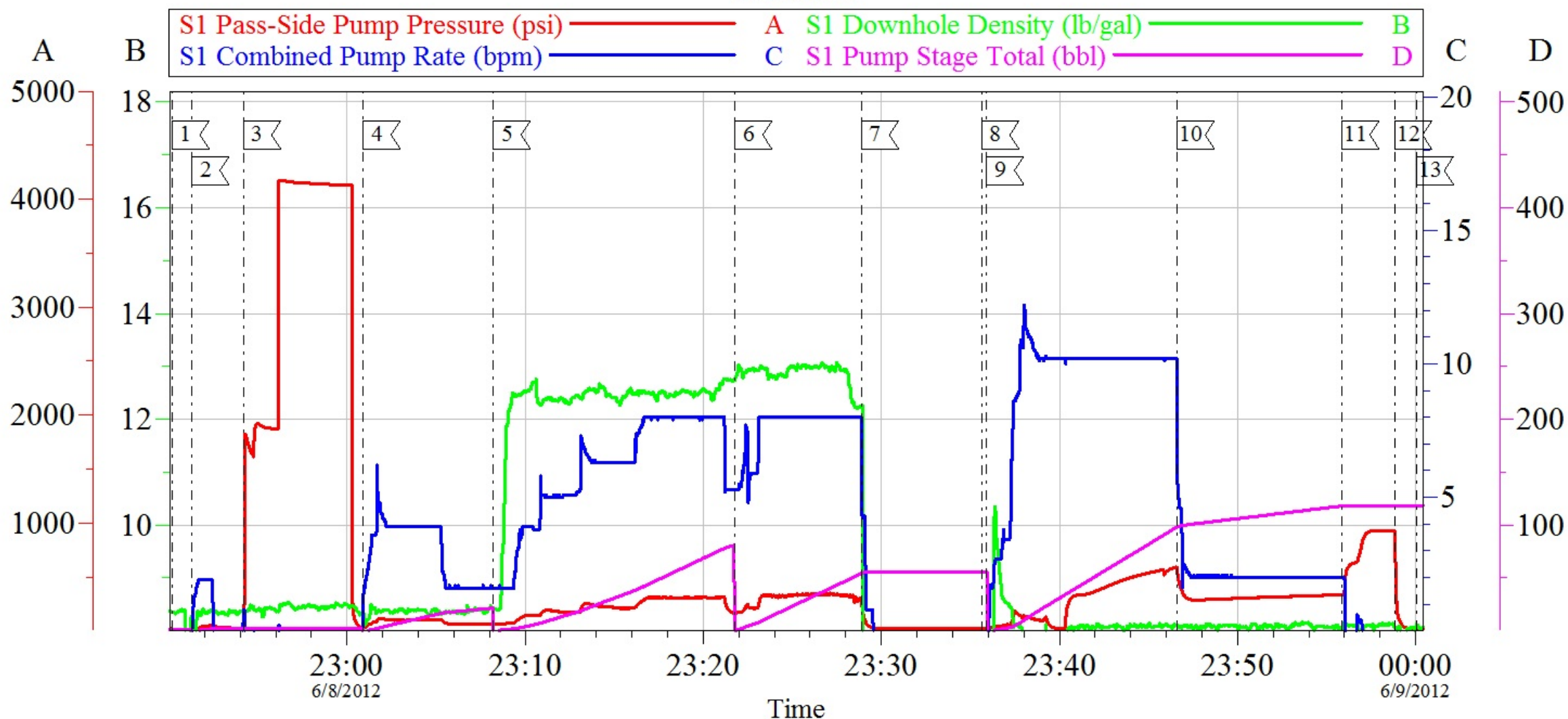
Title: CEMENTING SUPERVISOR

Location: Grand Junction, CO

NOTICE: This report is limited to the described sample tested. Any person using or relying on this report agrees that Halliburton shall not be liable for any loss or damage whether due to act or omission resulting from such report or its use.

WPX - KP 24-18

SURFACE



Local Event Log

1	START JOB	6/8/2012 22:50:10	2	FILL LINES	6/8/2012 22:51:18
3	PRESSURE TEST	6/8/2012 22:54:12	4	H2O SPACER	6/8/2012 23:00:55
5	LEAD CEMENT	6/8/2012 23:08:12	6	TAIL CEMENT	6/8/2012 23:21:46
7	SHUTDOWN	6/8/2012 23:28:53	8	DROP TOP PLUG	6/8/2012 23:35:39
9	PUMP DISPLACEMENT	6/8/2012 23:35:55	10	SLOW RATE	6/8/2012 23:46:37
11	BUMP PLUG	6/8/2012 23:55:52	12	CHECK FLOATS	6/8/2012 23:58:49
13	END JOB	6/9/2012 00:00:02			

Customer: WPX ENERGY ROCKY MOUNTAIN LLC-EBUS
Well Description: KP 24-18
Company Rep: GARY VALAD

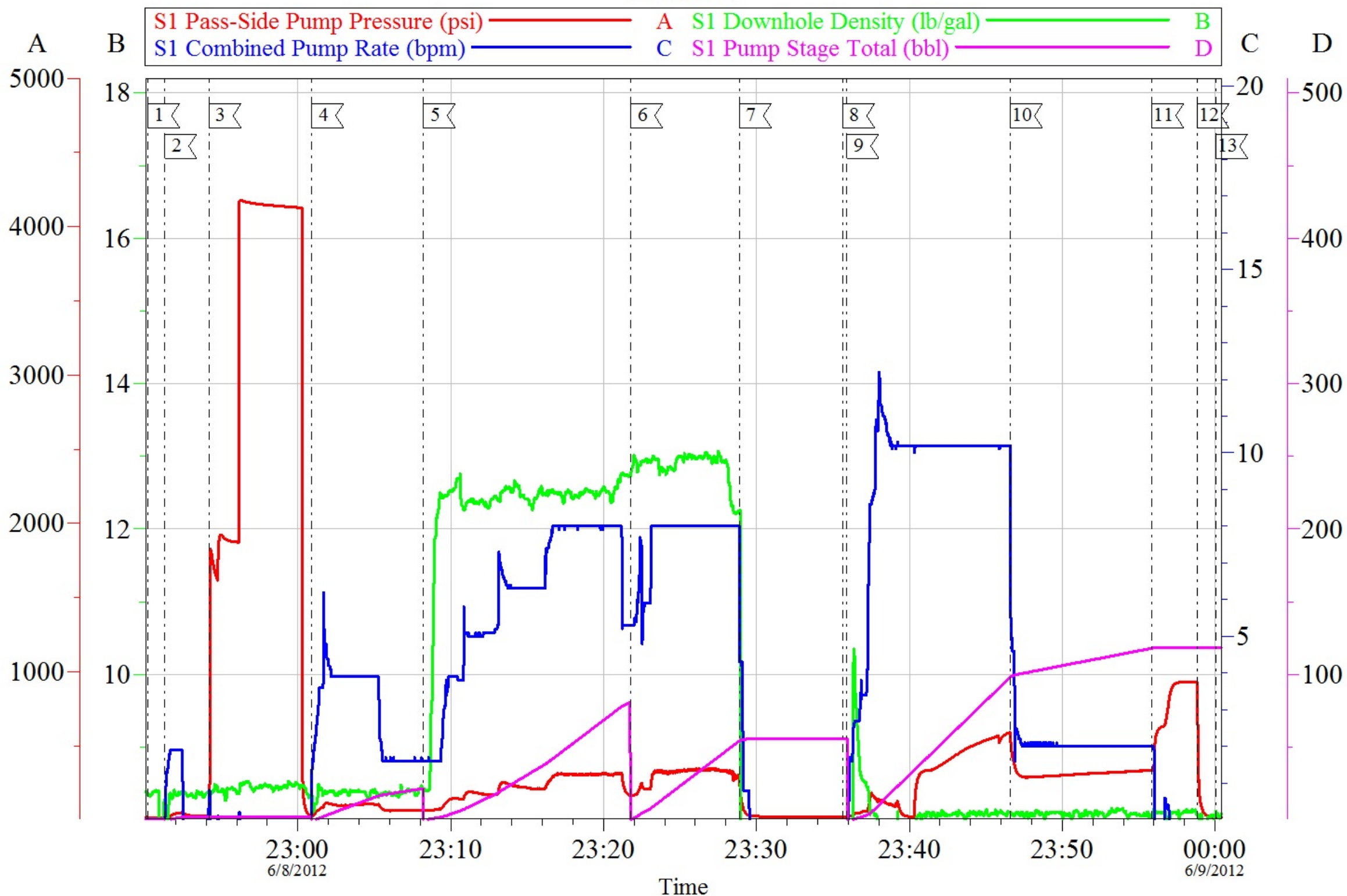
Job Date: 08-Jun-2012
Job Type: SURFACE
Cement Supervisor: RYON NICKLE

Sales Order #: 9537828
ADC Used: YES
Elite # / Operator: E5 / LOGAN WADE

OptiCem v6.4.10
09-Jun-12 00:21

WPX - KP 24-18

SURFACE



Customer: WPX ENERGY ROCKY MOUNTAIN LLC-EBUS
Well Description: KP 24-18
Company Rep: GARY VALAD

Job Date: 08-Jun-2012
Job Type: SURFACE
Cement Supervisor: RYON NICKLE

Sales Order #: 9537828
ADC Used: YES
Elite # / Operator: E5 / LOGAN WADE

OptiCem v6.4.10
09-Jun-12 00:22

Sales Order #: 9537828	Line Item: 10	Survey Conducted Date: 6/9/2012
Customer: WPX ENERGY ROCKY MOUNTAIN LLC-EBUS		Job Type (BOM): CMT SURFACE CASING BOM
Customer Representative: GARY VALAD		API / UWI: (leave blank if unknown) 05-045-20626
Well Name: KP		Well Number: 24-18
Well Type: Development Well	Well Country: United States of America	
H2S Present: No	Well State: Colorado	Well County: Garfield

Dear Customer,

We hope that you were satisfied with the service quality of this job performed by Halliburton. It is the aim of our management and service personnel to deliver equipment and service of a standard unmatched in the service sector of the energy industry.

Please take the time to let us know if our performance met with your satisfaction. Please be as critical as possible to ensure we constantly improve our service. Your comments are of great value to us and are intended for the exclusive use of Halliburton.

CUSTOMER SATISFACTION SURVEY

CATEGORY	CUSTOMER SATISFACTION RESPONSE	
Survey Conducted Date	The date the survey was conducted	6/9/2012
Survey Interviewer	The survey interviewer is the person who initiated the survey.	RYON NICKLE (HB22175)
Customer Participation	Did the customer participate in this survey? (Y/N)	Yes
Customer Representative	Enter the Customer representative name	GARY VALAD
HSE	Was our HSE performance satisfactory? Circle Y or N	Yes
Equipment	Were you satisfied with our Equipment? Circle Y or N	Yes
Personnel	Were you satisfied with our people? Circle Y or N	Yes
Customer Comment	Customer's Comment	

CUSTOMER SIGNATURE

Sales Order #: 9537828	Line Item: 10	Survey Conducted Date: 6/9/2012
Customer: WPX ENERGY ROCKY MOUNTAIN LLC-EBUS		Job Type (BOM): CMT SURFACE CASING BOM
Customer Representative: GARY VALAD		API / UWI: (leave blank if unknown) 05-045-20626
Well Name: KP		Well Number: 24-18
Well Type: Development Well	Well Country: United States of America	
H2S Present: No	Well State: Colorado	Well County: Garfield

KEY PERFORMANCE INDICATORS

General	
Survey Conducted Date The date the survey was conducted	6/9/2012

Cementing KPI Survey	
Type of Job Select the type of job. (Cementing or Non-Cementing)	0
Select the Maximum Deviation range for this Job What is the highest deviation for the job you just completed? This may not be the maximum well deviation.	Vertical
Total Operating Time (hours) Total Operating Hours Including Rig-up, Pumping, Rig-down. Enter in decimal format.	3
HSE Incident, Accident, Injury HSE Incident, Accident, Injury. This should be recordable incidents only.	No
Was the job purpose achieved? Was the job delivered correctly as per customer agreed design?	Yes
Operating Hours (Pumping Hours) Total number of hours pumping fluid on this job. Enter in decimal format.	1
Customer Non-Productive Rig Time (hrs) Lost time due to Halliburton in the start, execution, or completion of an ordered service or product, or delays in a follow-on service. Enter in decimal format. 0 if none.	0
Type of Rig Classification Job Was Performed Type Of Rig (classification) Job Was Performed On	Drilling Rig (Portable)
Number Of JSAs Performed Number Of Jsas Performed	5
Number of Unplanned Shutdowns Unplanned shutdown is when injection stops for any period of time.	0
Was this a Primary Cement Job (Yes / No)	Yes

Sales Order #: 9537828	Line Item: 10	Survey Conducted Date: 6/9/2012
Customer: WPX ENERGY ROCKY MOUNTAIN LLC-EBUS		Job Type (BOM): CMT SURFACE CASING BOM
Customer Representative: GARY VALAD		API / UWI: (leave blank if unknown) 05-045-20626
Well Name: KP		Well Number: 24-18
Well Type: Development Well	Well Country: United States of America	
H2S Present: No	Well State: Colorado	Well County: Garfield

Primary Cement Job= Casing job, Liner job, or Tie-back job.	
Did We Run Wiper Plugs? Did We Run Top And Bottom Casing Wiper Plugs?	Top
Mixing Density of Job Stayed in Designed Density Range (0-100%) Density Range defined as +/- .20 ppg. Calculation: Total BBLs cement mixed at designed density divided by total BBLs of cement multiplied by 100	95
Was Automated Density Control Used? Was Automated Density Control (ADC) Used ?	Yes
Pump Rate (percent) of Job Stayed At Designed Pump Rate Pump Rate range defined as +/- 1bbl/min. Calculation: Total BBLs of fluid pumped at the designed rate divided by Total BBLs of fluid pumped, multiplied by 100	95
Nbr of Remedial Sqz Jobs Rqd - Competition Number Of Remedial Squeeze Jobs Required After Primary Job Performed By Competition	0
Nbr of Remedial Plug Jobs Rqd - HES Number Of Remedial Plug Jobs Needed After Primary Plug Pumped By HES	0
Nbr of Remedial Sqz Jobs Rqd - HES Number Of Remedial Squeeze Jobs Required After Primary Job Performed By HES	0