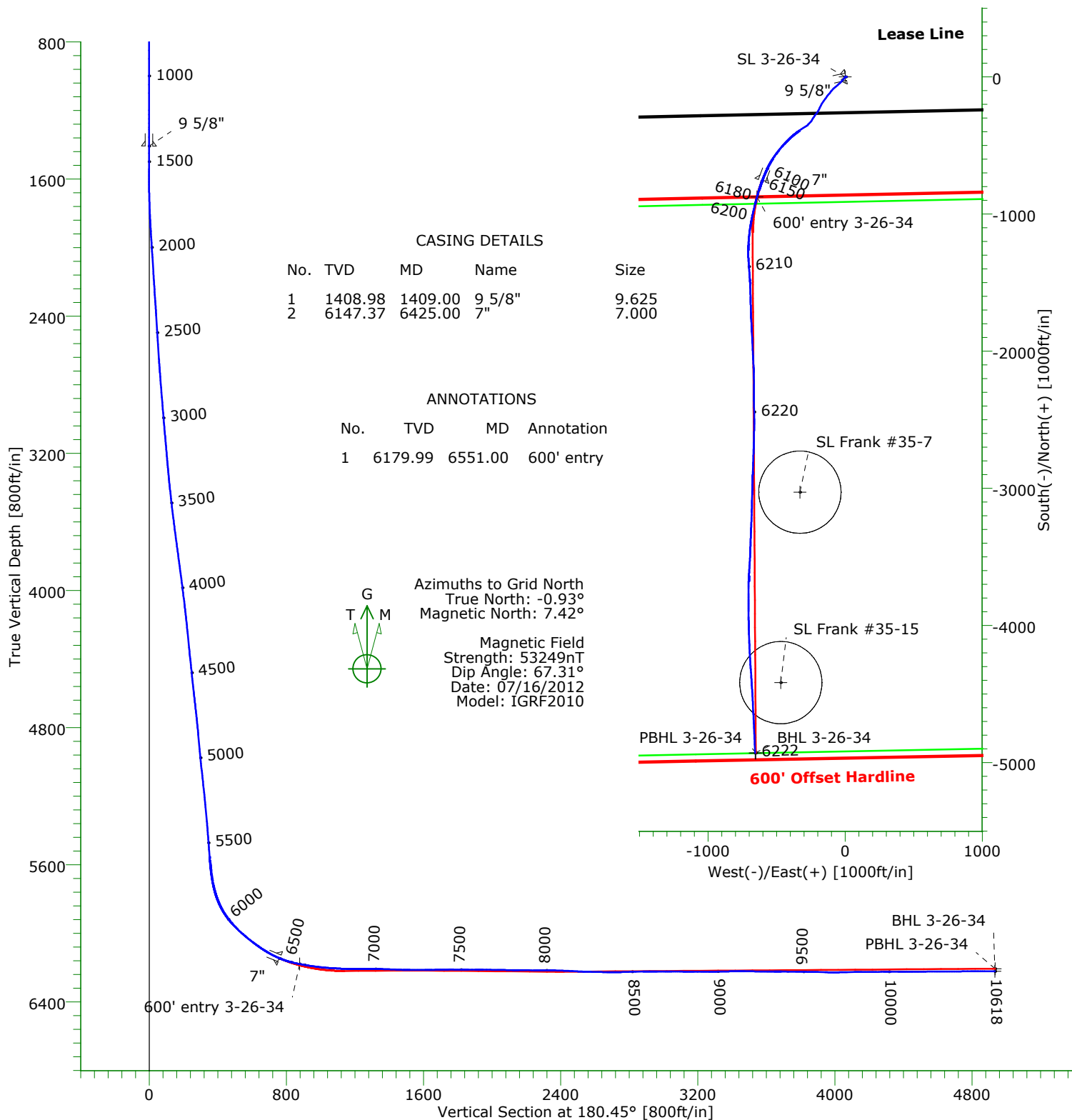




CARRIZO OIL & GAS, INC.

Field: Niobrara CONZ'83
Site: Hemberger 26 Pad
Well: 3-26-34-8-60
Wellpath: Original Hole



Precision Directional Services, Inc.

Survey Report

Company: CARRIZO OIL & GAS, INC. Field: Niobrara CONZ'83 Site: Hemberger 26 Pad Well: 3-26-34-8-60 Wellpath: Original Hole	Date: 07/25/2012 Co-ordinate(NE) Reference: Vertical (TVD) Reference: Section (VS) Reference: Survey Calculation Method:	Time: 13:57:59 Well: 3-26-34-8-60, Grid North 4874'GL+17'KB 4891.0 Well (0.00N,0.00E,180.45Azi) Minimum Curvature	Page: 1 Db: Adapti
---	---	---	-------------------------------------

Field: Niobrara CONZ'83 Map System: US State Plane Coordinate System 1983 Geo Datum: GRS 1980 Sys Datum: Mean Sea Level	Map Zone: Colorado, Northern Zone Coordinate System: Well Centre Geomagnetic Model: IGRF2010
--	---

Site: Hemberger 26 Pad Weld County, CO Site Position: From: Map Position Uncertainty: 0.00 ft Ground Level: 4874.00 ft	Northing: 1474476.56 ft Easting: 3401047.83 ft Latitude: 40 37 36.689 N Longitude: 104 3 18.544 W North Reference: Grid Grid Convergence: 0.93 deg
--	---

Well: 3-26-34-8-60 Centered on 1-26-34-8-60 Well Position: +N/-S -7.89 ft +E/-W -6.15 ft Position Uncertainty: 0.00 ft	Slot Name: 3-26 Northing: 1474468.67 ft Easting : 3401041.68 ft Latitude: 40 37 36.612 N Longitude: 104 3 18.625 W
---	---

Wellpath: Original Hole Current Datum: 4874'GL+17'KB Magnetic Data: 07/16/2012 Field Strength: 53249 nT Vertical Section: Depth From (TVD) ft	Drilled From: Surface Tie-on Depth: 0.00 ft Above System Datum: Mean Sea Level Declination: 8.35 deg Mag Dip Angle: 67.31 deg +N/-S ft +E/-W ft Direction deg
0.00	0.00

Survey Program for Definitive Wellpath				
Date: 07/25/2012	Validated: No	Version: 1		
Actual From ft	To ft	Survey	Toolcode	Tool Name
100.00	1311.00	Survey #1 (100.00-1311.00)	Gyroscope	Gyroscope
1450.00	10556.00	Survey #2 (1450.00-10556.00)	MWD	Std MWD
10618.00	10618.00	Survey #3 (10618.00-10618.00)	Project	Projection

Survey										
MD ft	Incl deg	Azim deg	TVD ft	+N/-S ft	+E/-W ft	VS ft	DLS deg/100ft	Build deg/100ft	Turn deg/100ft	Tool/Comment
0.00	0.00	0.00	0.00	0.00	0.00	0.00	0.00	0.00	0.00	TIE LINE
100.00	0.29	99.83	100.00	-0.04	0.25	0.04	0.29	0.29	0.00	Gyroscope
200.00	0.13	359.38	200.00	0.03	0.50	-0.03	0.34	-0.16	-100.45	Gyroscope
300.00	0.17	36.06	300.00	0.27	0.58	-0.27	0.10	0.04	36.68	Gyroscope
400.00	0.07	48.91	400.00	0.43	0.72	-0.43	0.10	-0.10	12.85	Gyroscope
500.00	0.12	46.68	500.00	0.54	0.84	-0.55	0.05	0.05	-2.24	Gyroscope
600.00	0.13	73.13	600.00	0.65	1.03	-0.66	0.06	0.01	26.45	Gyroscope
700.00	0.34	65.30	700.00	0.80	1.41	-0.82	0.21	0.21	-7.83	Gyroscope
800.00	0.38	79.66	800.00	0.99	2.01	-1.00	0.10	0.05	14.36	Gyroscope
900.00	0.29	109.34	899.99	0.96	2.57	-0.98	0.20	-0.10	29.68	Gyroscope
1000.00	0.34	121.99	999.99	0.73	3.06	-0.75	0.08	0.05	12.65	Gyroscope
1100.00	0.24	111.45	1099.99	0.50	3.50	-0.52	0.11	-0.09	-10.54	Gyroscope
1200.00	0.29	48.59	1199.99	0.59	3.89	-0.62	0.28	0.05	-62.86	Gyroscope
1300.00	0.48	85.10	1299.99	0.79	4.50	-0.83	0.30	0.19	36.51	Gyroscope
1311.00	0.48	89.89	1310.99	0.80	4.59	-0.83	0.37	-0.01	43.55	Gyroscope
1409.00	0.35	77.68	1408.98	0.86	5.29	-0.90	0.16	-0.14	-12.46	9 5/8"
1450.00	0.30	69.50	1449.98	0.92	5.52	-0.97	0.16	-0.12	-19.94	MWD
1542.00	0.30	62.60	1541.98	1.12	5.95	-1.17	0.04	0.00	-7.50	MWD
1634.00	1.30	237.20	1633.98	0.66	5.29	-0.71	1.74	1.09	189.78	MWD
1719.00	2.40	231.50	1718.93	-0.97	3.09	0.94	1.31	1.29	-6.71	MWD
1803.00	3.80	230.50	1802.81	-3.83	-0.44	3.83	1.67	1.67	-1.19	MWD

Precision Directional Services, Inc.

Survey Report

Company: CARRIZO OIL & GAS, INC. Field: Niobrara CONZ'83 Site: Hemberger 26 Pad Well: 3-26-34-8-60 Wellpath: Original Hole	Date: 07/25/2012 Co-ordinate(NE) Reference: Well: 3-26-34-8-60, Grid North Vertical (TVD) Reference: 4874'GL+17'KB 4891.0 Section (VS) Reference: Well (0.00N,0.00E,180.45Azi) Survey Calculation Method: Minimum Curvature	Time: 13:57:59 Page: 2 Db: Adapti
---	--	--

Survey

MD ft	Incl deg	Azim deg	TVD ft	+N/-S ft	+E/-W ft	VS ft	DLS deg/100ft	Build deg/100ft	Turn deg/100ft	Tool/Comment
1888.00	5.10	225.70	1887.55	-8.26	-5.31	8.30	1.59	1.53	-5.65	MWD
1973.00	4.70	222.80	1972.24	-13.46	-10.38	13.54	0.55	-0.47	-3.41	MWD
2058.00	4.60	217.80	2056.96	-18.70	-14.84	18.82	0.49	-0.12	-5.88	MWD
2143.00	4.60	220.60	2141.68	-23.98	-19.15	24.13	0.26	0.00	3.29	MWD
2228.00	5.20	221.30	2226.37	-29.47	-23.91	29.65	0.71	0.71	0.82	MWD
2313.00	4.80	218.20	2311.05	-35.16	-28.65	35.38	0.57	-0.47	-3.65	MWD
2397.00	5.20	229.40	2394.73	-40.39	-33.71	40.66	1.25	0.48	13.33	MWD
2483.00	5.20	226.40	2480.38	-45.62	-39.49	45.93	0.32	0.00	-3.49	MWD
2568.00	5.50	227.30	2565.01	-51.04	-45.28	51.39	0.37	0.35	1.06	MWD
2653.00	5.50	226.30	2649.62	-56.61	-51.22	57.01	0.11	0.00	-1.18	MWD
2737.00	6.80	230.80	2733.13	-62.54	-57.98	62.99	1.65	1.55	5.36	MWD
2822.00	7.10	231.00	2817.51	-69.02	-65.96	69.54	0.35	0.35	0.24	MWD
2908.00	7.20	229.30	2902.84	-75.88	-74.18	76.46	0.27	0.12	-1.98	MWD
2993.00	6.90	230.00	2987.20	-82.64	-82.13	83.28	0.37	-0.35	0.82	MWD
3077.00	7.10	224.50	3070.57	-89.59	-89.63	90.29	0.83	0.24	-6.55	MWD
3163.00	6.50	217.80	3155.97	-97.22	-96.34	97.98	1.16	-0.70	-7.79	MWD
3248.00	5.80	216.20	3240.48	-104.49	-101.83	105.29	0.85	-0.82	-1.88	MWD
3333.00	6.90	218.40	3324.95	-111.96	-107.53	112.80	1.33	1.29	2.59	MWD
3417.00	7.90	219.20	3408.25	-120.39	-114.32	121.28	1.20	1.19	0.95	MWD
3502.00	8.50	219.40	3492.38	-129.77	-122.00	130.72	0.71	0.71	0.24	MWD
3588.00	8.80	218.50	3577.41	-139.83	-130.13	140.84	0.38	0.35	-1.05	MWD
3673.00	9.20	217.50	3661.36	-150.31	-138.31	151.39	0.51	0.47	-1.18	MWD
3758.00	9.60	216.10	3745.22	-161.42	-146.62	162.57	0.54	0.47	-1.65	MWD
3843.00	9.10	215.40	3829.09	-172.63	-154.69	173.84	0.60	-0.59	-0.82	MWD
3929.00	8.70	212.60	3914.05	-183.65	-162.14	184.92	0.69	-0.47	-3.26	MWD
4013.00	8.40	209.90	3997.12	-194.32	-168.62	195.64	0.60	-0.36	-3.21	MWD
4098.00	7.90	209.90	4081.26	-204.77	-174.62	206.13	0.59	-0.59	0.00	MWD
4183.00	6.90	208.30	4165.55	-214.33	-179.96	215.74	1.20	-1.18	-1.88	MWD
4268.00	6.20	206.40	4250.00	-222.94	-184.42	224.38	0.86	-0.82	-2.24	MWD
4353.00	6.20	203.80	4334.50	-231.25	-188.31	232.72	0.33	0.00	-3.06	MWD
4438.00	6.90	206.40	4418.94	-240.02	-192.43	241.52	0.89	0.82	3.06	MWD
4523.00	7.00	210.40	4503.32	-249.06	-197.33	250.60	0.58	0.12	4.71	MWD
4608.00	7.30	214.70	4587.66	-257.97	-203.02	259.55	0.72	0.35	5.06	MWD
4693.00	8.30	218.20	4671.87	-267.23	-209.89	268.87	1.30	1.18	4.12	MWD
4779.00	7.30	216.40	4757.08	-276.51	-216.97	278.20	1.20	-1.16	-2.09	MWD
4864.00	6.40	213.80	4841.47	-284.79	-222.81	286.53	1.12	-1.06	-3.06	MWD
4949.00	6.40	216.20	4925.94	-292.55	-228.24	294.33	0.31	0.00	2.82	MWD
5034.00	6.90	214.10	5010.37	-300.60	-233.90	302.43	0.65	0.59	-2.47	MWD
5119.00	7.20	209.90	5094.73	-309.45	-239.42	311.32	0.70	0.35	-4.94	MWD
5204.00	7.10	212.90	5179.06	-318.47	-244.93	320.39	0.45	-0.12	3.53	MWD
5290.00	6.80	217.00	5264.43	-327.00	-250.88	328.96	0.67	-0.35	4.77	MWD
5375.00	6.80	225.60	5348.84	-334.54	-257.51	336.55	1.20	0.00	10.12	MWD
5460.00	6.10	224.30	5433.30	-341.30	-264.26	343.36	0.84	-0.82	-1.53	MWD
5546.00	5.30	221.70	5518.87	-347.53	-270.09	349.64	0.98	-0.93	-3.02	MWD
5582.00	5.30	221.20	5554.72	-350.02	-272.29	352.15	0.13	0.00	-1.39	MWD
5624.00	8.70	231.70	5596.40	-353.45	-276.06	355.61	8.62	8.10	25.00	MWD
5667.00	13.20	240.50	5638.61	-357.89	-282.89	360.10	11.13	10.47	20.47	MWD
5709.00	17.00	239.50	5679.15	-363.37	-292.36	365.65	9.07	9.05	-2.38	MWD
5752.00	20.80	237.50	5719.83	-370.66	-304.22	373.04	8.96	8.84	-4.65	MWD
5795.00	25.70	235.80	5759.32	-380.01	-318.38	382.50	11.50	11.40	-3.95	MWD
5837.00	31.70	233.80	5796.15	-391.66	-334.83	394.28	14.47	14.29	-4.76	MWD
5879.00	37.10	233.50	5830.79	-405.72	-353.93	408.49	12.86	12.86	-0.71	MWD
5921.00	41.50	231.00	5863.29	-422.02	-374.94	424.95	11.13	10.48	-5.95	MWD
5964.00	45.10	227.80	5894.58	-441.23	-397.30	444.33	9.80	8.37	-7.44	MWD

Precision Directional Services, Inc.

Survey Report

Company: CARRIZO OIL & GAS, INC.	Date: 07/25/2012	Time: 13:57:59	Page: 3
Field: Niobrara CONZ'83	Co-ordinate(NE) Reference: Well: 3-26-34-8-60, Grid North		
Site: Hemberger 26 Pad	Vertical (TVD) Reference: 4874'GL+17"KB 4891.0		
Well: 3-26-34-8-60	Section (VS) Reference: Well (0.00N,0.00E,180.45Azi)		
Wellpath: Original Hole	Survey Calculation Method: Minimum Curvature	Db: Adapti	

Survey

MD ft	Incl deg	Azim deg	TVD ft	+N/-S ft	+E/-W ft	VS ft	DLS deg/100ft	Build deg/100ft	Turn deg/100ft	Tool/Comment
6007.00	48.40	224.50	5924.04	-462.93	-419.86	466.22	9.49	7.67	-7.67	MWD
6049.00	51.80	221.90	5950.98	-486.43	-441.90	489.88	9.38	8.10	-6.19	MWD
6091.00	53.50	220.10	5976.46	-511.63	-463.80	515.25	5.29	4.05	-4.29	MWD
6134.00	55.00	218.70	6001.59	-538.59	-485.94	542.39	4.38	3.49	-3.26	MWD
6176.00	56.30	216.10	6025.29	-566.14	-507.00	570.10	5.97	3.10	-6.19	MWD
6219.00	56.90	213.80	6048.96	-595.56	-527.56	599.69	4.68	1.40	-5.35	MWD
6261.00	57.90	210.30	6071.59	-625.55	-546.32	629.82	7.41	2.38	-8.33	MWD
6304.00	59.30	206.40	6094.00	-657.84	-563.74	662.25	8.40	3.26	-9.07	MWD
6347.00	62.60	203.20	6114.88	-691.96	-579.49	696.49	10.06	7.67	-7.44	MWD
6415.00	67.40	201.30	6143.61	-748.99	-602.79	753.70	7.50	7.06	-2.79	MWD
6425.00	68.51	200.68	6147.37	-757.64	-606.11	762.38	12.52	11.13	-6.19	7"
6458.00	72.20	198.70	6158.46	-786.90	-616.58	791.72	12.52	11.17	-6.00	MWD
6501.00	77.10	196.60	6169.84	-826.40	-629.14	831.32	12.33	11.40	-4.88	MWD
6543.00	79.10	195.00	6178.50	-865.94	-640.32	870.95	6.05	4.76	-3.81	MWD
6551.00	79.40	194.91	6179.99	-873.54	-642.35	878.56	3.89	3.72	-1.17	600' entry
6586.00	80.70	194.50	6186.04	-906.88	-651.10	911.97	3.89	3.72	-1.16	MWD
6606.00	81.80	193.90	6189.08	-926.04	-655.95	931.17	6.25	5.50	-3.00	MWD
6648.00	82.60	193.20	6194.78	-966.50	-665.70	971.69	2.52	1.90	-1.67	MWD
6691.00	84.30	192.30	6199.69	-1008.16	-675.13	1013.43	4.47	3.95	-2.09	MWD
6734.00	86.30	191.30	6203.21	-1050.11	-683.89	1055.45	5.20	4.65	-2.33	MWD
6776.00	87.10	188.80	6205.63	-1091.39	-691.21	1096.79	6.24	1.90	-5.95	MWD
6819.00	87.80	186.70	6207.54	-1133.95	-697.00	1139.39	5.14	1.63	-4.88	MWD
6861.00	89.30	185.10	6208.61	-1175.72	-701.31	1181.19	5.22	3.57	-3.81	MWD
6904.00	90.70	183.40	6208.61	-1218.59	-704.50	1224.09	5.12	3.26	-3.95	MWD
6947.00	90.60	180.40	6208.12	-1261.56	-705.92	1267.07	6.98	-0.23	-6.98	MWD
6989.00	89.40	178.50	6208.12	-1303.56	-705.52	1309.06	5.35	-2.86	-4.52	MWD
7032.00	88.50	176.30	6208.91	-1346.50	-703.57	1351.99	5.53	-2.09	-5.12	MWD
7074.00	88.00	175.80	6210.19	-1388.38	-700.68	1393.84	1.68	-1.19	-1.19	MWD
7117.00	87.50	175.60	6211.88	-1431.23	-697.46	1436.66	1.25	-1.16	-0.47	MWD
7160.00	87.90	176.50	6213.60	-1474.09	-694.50	1479.50	2.29	0.93	2.09	MWD
7203.00	90.20	178.10	6214.32	-1517.03	-692.47	1522.43	6.52	5.35	3.72	MWD
7245.00	89.70	177.80	6214.35	-1559.01	-690.97	1564.39	1.39	-1.19	-0.71	MWD
7288.00	90.10	178.30	6214.43	-1601.98	-689.51	1607.35	1.49	0.93	1.16	MWD
7331.00	91.60	179.20	6213.79	-1644.97	-688.57	1650.32	4.07	3.49	2.09	MWD
7373.00	91.20	178.50	6212.76	-1686.94	-687.73	1692.29	1.92	-0.95	-1.67	MWD
7416.00	90.60	177.80	6212.09	-1729.92	-686.34	1735.25	2.14	-1.40	-1.63	MWD
7459.00	89.60	177.00	6212.01	-1772.87	-684.39	1778.19	2.98	-2.33	-1.86	MWD
7500.00	89.30	176.90	6212.41	-1813.81	-682.21	1819.11	0.77	-0.73	-0.24	MWD
7543.00	90.40	177.40	6212.52	-1856.76	-680.07	1862.04	2.81	2.56	1.16	MWD
7585.00	90.20	177.40	6212.30	-1898.71	-678.16	1903.98	0.48	-0.48	0.00	MWD
7628.00	89.20	177.00	6212.52	-1941.66	-676.06	1946.91	2.50	-2.33	-0.93	MWD
7671.00	89.00	177.00	6213.20	-1984.60	-673.81	1989.83	0.47	-0.47	0.00	MWD
7713.00	89.40	177.20	6213.79	-2026.54	-671.69	2031.75	1.06	0.95	0.48	MWD
7756.00	88.70	176.90	6214.50	-2069.48	-669.48	2074.67	1.77	-1.63	-0.70	MWD
7799.00	88.90	177.20	6215.40	-2112.41	-667.26	2117.58	0.84	0.47	0.70	MWD
7841.00	90.00	178.80	6215.80	-2154.38	-665.80	2159.54	4.62	2.62	3.81	MWD
7884.00	89.70	179.20	6215.92	-2197.37	-665.05	2202.53	1.16	-0.70	0.93	MWD
7925.00	89.50	179.30	6216.20	-2238.37	-664.51	2243.52	0.55	-0.49	0.24	MWD
7968.00	90.20	179.90	6216.31	-2281.37	-664.21	2286.51	2.14	1.63	1.40	MWD
8010.00	89.60	179.20	6216.39	-2323.36	-663.88	2328.51	2.20	-1.43	-1.67	MWD
8052.00	88.30	179.90	6217.16	-2365.35	-663.55	2370.49	3.52	-3.10	1.67	MWD
8094.00	87.90	179.70	6218.55	-2407.33	-663.40	2412.47	1.06	-0.95	-0.48	MWD
8136.00	87.30	179.70	6220.31	-2449.29	-663.19	2454.43	1.43	-1.43	0.00	MWD

Precision Directional Services, Inc.

Survey Report

Company: CARRIZO OIL & GAS, INC. Field: Niobrara CONZ'83 Site: Hemberger 26 Pad Well: 3-26-34-8-60 Wellpath: Original Hole	Date: 07/25/2012 Co-ordinate(NE) Reference: Well: 3-26-34-8-60, Grid North Vertical (TVD) Reference: 4874'GL+17"KB 4891.0 Section (VS) Reference: Well (0.00N,0.00E,180.45Azi) Survey Calculation Method: Minimum Curvature	Time: 13:57:59 Page: 4 Db: Adapti
---	--	--

Survey

MD ft	Incl deg	Azim deg	TVD ft	+N/-S ft	+E/-W ft	VS ft	DLS deg/100ft	Build deg/100ft	Turn deg/100ft	Tool/Comment
8179.00	86.80	179.70	6222.52	-2492.24	-662.96	2497.37	1.16	-1.16	0.00	MWD
8222.00	88.30	180.20	6224.36	-2535.20	-662.92	2540.32	3.68	3.49	1.16	MWD
8264.00	88.90	180.70	6225.39	-2577.18	-663.25	2582.31	1.86	1.43	1.19	MWD
8307.00	88.70	181.10	6226.29	-2620.17	-663.93	2625.30	1.04	-0.47	0.93	MWD
8350.00	88.90	181.60	6227.19	-2663.14	-664.94	2668.29	1.25	0.47	1.16	MWD
8392.00	90.30	182.30	6227.48	-2705.12	-666.37	2710.27	3.73	3.33	1.67	MWD
8435.00	91.80	182.10	6226.69	-2748.08	-668.02	2753.24	3.52	3.49	-0.47	MWD
8478.00	91.50	182.00	6225.45	-2791.03	-669.56	2796.21	0.74	-0.70	-0.23	MWD
8520.00	91.20	182.10	6224.46	-2832.99	-671.06	2838.18	0.75	-0.71	0.24	MWD
8563.00	91.20	182.00	6223.56	-2875.96	-672.60	2881.15	0.23	0.00	-0.23	MWD
8604.00	89.10	180.90	6223.46	-2916.94	-673.63	2922.14	5.78	-5.12	-2.68	MWD
8647.00	90.80	182.30	6223.49	-2959.92	-674.84	2965.13	5.12	3.95	3.26	MWD
8690.00	90.60	181.60	6222.97	-3002.89	-676.30	3008.11	1.69	-0.47	-1.63	MWD
8732.00	89.30	181.30	6223.01	-3044.88	-677.36	3050.10	3.18	-3.10	-0.71	MWD
8775.00	88.90	181.30	6223.68	-3087.86	-678.34	3093.09	0.93	-0.93	0.00	MWD
8817.00	89.70	181.60	6224.19	-3129.85	-679.40	3135.08	2.03	1.90	0.71	MWD
8860.00	90.10	182.10	6224.27	-3172.82	-680.79	3178.07	1.49	0.93	1.16	MWD
8903.00	90.20	182.00	6224.16	-3215.79	-682.33	3221.05	0.33	0.23	-0.23	MWD
8945.00	89.80	182.10	6224.16	-3257.77	-683.83	3263.04	0.98	-0.95	0.24	MWD
8988.00	90.50	182.70	6224.04	-3300.73	-685.63	3306.01	2.14	1.63	1.40	MWD
9030.00	91.40	182.30	6223.35	-3342.68	-687.46	3347.98	2.34	2.14	-0.95	MWD
9073.00	90.70	181.80	6222.56	-3385.65	-689.00	3390.96	2.00	-1.63	-1.16	MWD
9116.00	89.50	181.10	6222.48	-3428.63	-690.09	3433.95	3.23	-2.79	-1.63	MWD
9158.00	90.20	182.80	6222.59	-3470.61	-691.52	3475.93	4.38	1.67	4.05	MWD
9201.00	89.80	183.40	6222.59	-3513.54	-693.84	3518.88	1.68	-0.93	1.40	MWD
9242.00	89.50	183.70	6222.84	-3554.46	-696.38	3559.82	1.03	-0.73	0.73	MWD
9285.00	89.60	182.80	6223.18	-3597.39	-698.82	3602.77	2.11	0.23	-2.09	MWD
9328.00	90.20	184.30	6223.26	-3640.31	-701.48	3645.71	3.76	1.40	3.49	MWD
9370.00	89.00	180.90	6223.55	-3682.26	-703.38	3687.67	8.58	-2.86	-8.10	MWD
9413.00	89.50	180.60	6224.11	-3725.25	-703.95	3730.66	1.36	1.16	-0.70	MWD
9456.00	89.50	180.70	6224.49	-3768.25	-704.44	3773.66	0.23	0.00	0.23	MWD
9498.00	89.00	180.40	6225.04	-3810.24	-704.84	3815.66	1.39	-1.19	-0.71	MWD
9541.00	89.30	179.50	6225.68	-3853.24	-704.80	3858.65	2.21	0.70	-2.09	MWD
9584.00	88.40	179.20	6226.54	-3896.22	-704.31	3901.63	2.21	-2.09	-0.70	MWD
9626.00	88.50	179.20	6227.68	-3938.20	-703.73	3943.61	0.24	0.24	0.00	MWD
9669.00	89.70	178.80	6228.35	-3981.19	-702.98	3986.59	2.94	2.79	-0.93	MWD
9711.00	91.50	178.30	6227.91	-4023.17	-701.91	4028.56	4.45	4.29	-1.19	MWD
9754.00	90.80	178.10	6227.05	-4066.14	-700.56	4071.52	1.69	-1.63	-0.47	MWD
9797.00	90.70	178.10	6226.49	-4109.12	-699.14	4114.48	0.23	-0.23	0.00	MWD
9839.00	90.00	177.40	6226.23	-4151.08	-697.49	4156.43	2.36	-1.67	-1.67	MWD
9882.00	90.40	177.20	6226.08	-4194.03	-695.46	4199.37	1.04	0.93	-0.47	MWD
9925.00	90.70	176.70	6225.67	-4236.97	-693.18	4242.28	1.36	0.70	-1.16	MWD
9968.00	90.60	176.50	6225.18	-4279.89	-690.63	4285.18	0.52	-0.23	-0.47	MWD
10010.00	90.00	175.80	6224.96	-4321.80	-687.81	4327.07	2.20	-1.43	-1.67	MWD
10053.00	90.00	176.00	6224.96	-4364.69	-684.73	4369.93	0.47	0.00	0.47	MWD
10096.00	90.70	176.50	6224.70	-4407.59	-681.92	4412.81	2.00	1.63	1.16	MWD
10139.00	90.10	176.30	6224.40	-4450.51	-679.22	4455.70	1.47	-1.40	-0.47	MWD
10181.00	90.30	176.70	6224.25	-4492.43	-676.66	4497.60	1.06	0.48	0.95	MWD
10224.00	90.40	177.00	6223.99	-4535.36	-674.29	4540.52	0.74	0.23	0.70	MWD
10266.00	90.10	177.20	6223.80	-4577.31	-672.17	4582.45	0.86	-0.71	0.48	MWD
10309.00	90.70	177.20	6223.50	-4620.26	-670.07	4625.38	1.40	1.40	0.00	MWD
10352.00	90.40	176.90	6223.09	-4663.20	-667.85	4668.30	0.99	-0.70	-0.70	MWD
10394.00	90.20	177.20	6222.87	-4705.14	-665.69	4710.22	0.86	-0.48	0.71	MWD

Precision Directional Services, Inc.

Survey Report

Company: CARRIZO OIL & GAS, INC. Field: Niobrara CONZ'83 Site: Hemberger 26 Pad Well: 3-26-34-8-60 Wellpath: Original Hole	Date: 07/25/2012 Co-ordinate(NE) Reference: Well: 3-26-34-8-60, Grid North Vertical (TVD) Reference: 4874'GL+17'KB 4891.0 Section (VS) Reference: Well (0.00N,0.00E,180.45Azi) Survey Calculation Method: Minimum Curvature	Page: 5 Db: Adapti
---	--	---

Survey

MD ft	Incl deg	Azim deg	TVD ft	+N/-S ft	+E/-W ft	VS ft	DLS deg/100ft	Build deg/100ft	Turn deg/100ft	Tool/Comment
10437.00	90.60	177.40	6222.57	-4748.09	-663.67	4753.16	1.04	0.93	0.47	MWD
10479.00	90.40	177.40	6222.20	-4790.05	-661.76	4795.10	0.48	-0.48	0.00	MWD
10522.00	90.10	177.90	6222.02	-4833.01	-660.00	4838.04	1.36	-0.70	1.16	MWD
10556.00	90.30	177.80	6221.90	-4866.99	-658.72	4872.01	0.66	0.59	-0.29	MWD
10618.00	90.30	177.80	6221.57	-4928.94	-656.34	4933.94	0.00	0.00	0.00	Project

Casing Points

MD ft	TVD ft	Diameter in	Hole Size in	Name
1409.00	1408.98	9.625	12.250	9 5/8"
6425.00	6147.37	7.000	8.750	7"

Annotation

MD ft	TVD ft	
6551.00	6179.99	600' entry