

2" = 100'

FEET MD

COMPANY : Condor Energy Technology LLC WELL : Ford Family Trust 2H FIELD : Wattenberg COUNTY : Weld STATE : Colorado COUNTRY : U.S.A. UWI : 05-123-35357				COMPANY : Condor Energy Technology LLC WELL : Ford Family Trust 2H FIELD : Wattenberg COUNTY : Weld STATE : Colorado COUNTRY : U.S.A. UWI : 05-123-35357			
DEPTH REF. : RKB REF. HEIGHT : 16.000 ft GROUND LEVEL : 4923.000 ft				WELL LOCATION LAT:40°31'30.648"N LONG:104°1'51.060"W N:1437546.94 ft E:3408399.26 ft SEC:31 TWP:7N RANGE:59W			
BOREHOLE RECORD HOLE SIZE in FROM ft TO ft 8.75 5461 6569 6 6569 11307 87-91 6569 11307				OTHER SERVICES ROP TEMP RKB to Ground Level G.I. to Mean Sea Level			
DEVIATION RECORD INCLINATION deg FROM ft TO ft 0 0 5461 0-89 5461 6569 87-91 6569 11307							
CASING RECORD CASING SIZE in FROM ft TO ft 9.625 0 5461 7 0 6569				DRILLING CO. : Cade RIG : 21 LMD UNIT NO. : C-51/G7 DISTRICT : Casper SPUD DATE : 04/24/12 LMD START DATE : 05/01/2012 DEPTH : 5461 ft LMD END DATE : 05/18/2012 DEPTH : 11307 ft TOTAL DEPTH : 11307 ft			

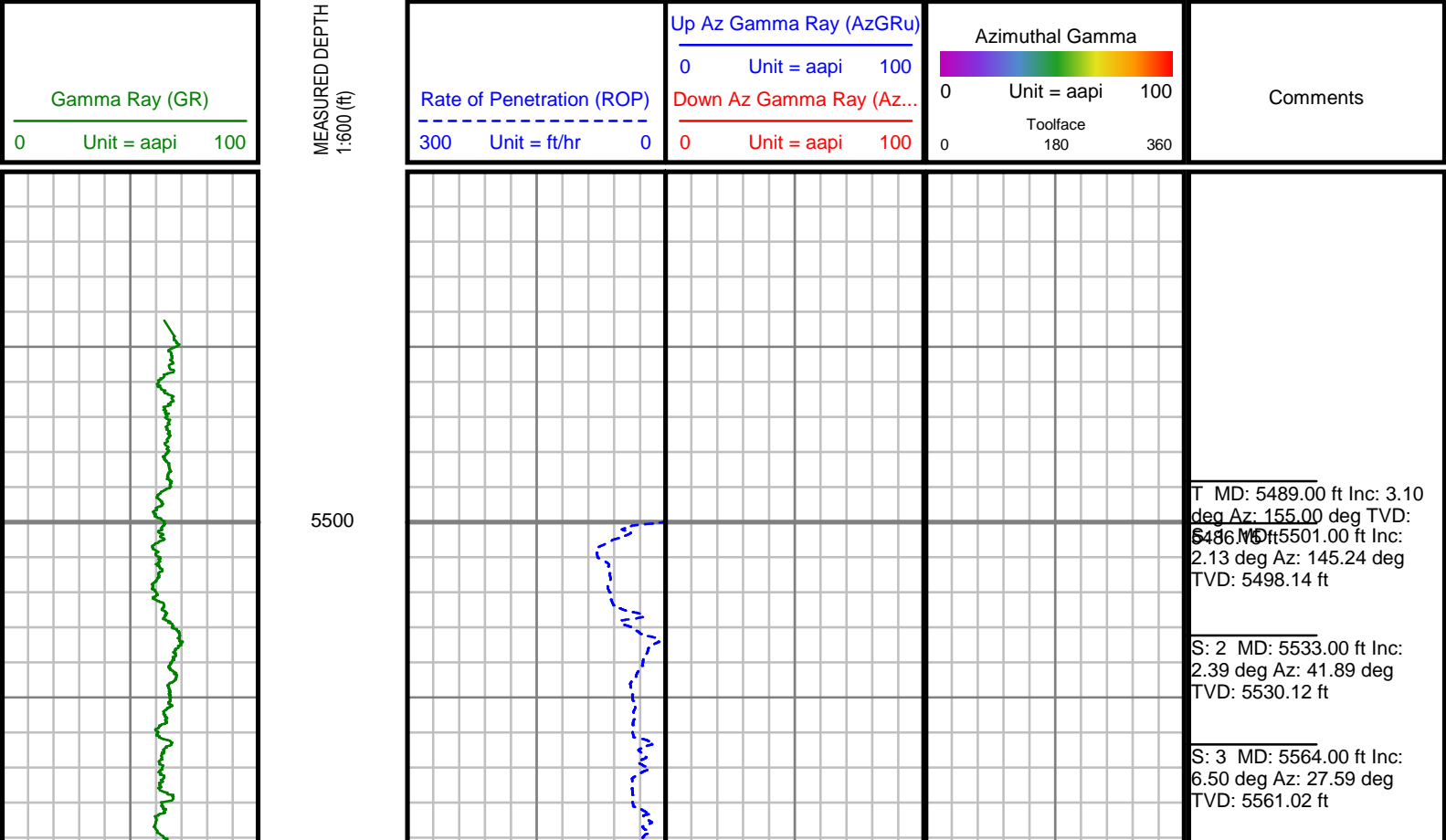
Run Data						
RUN NUMBER	1	2	3	4	5	6
START DATE	05/01/2012	05/02/2012	05/06/2012	05/08/2012	5/10/2012	5/13/2012
START TIME	12:54	10:07	11:30	05:30	07:00	04:10
END DATE	05/02/2012	05/05/2012	05/08/2012	5/10/2012	5/13/2012	5/13/2012
END TIME	09:45	09:30	04:30	06:45	04:10	22:00
DEPTH IN (ft)	5461	5655	6569	7009	7804	9743
DEPTH OUT (ft)	5655	6569	7009	7804	9743	9819
LOG TOP (ft)	5446	5605	6522	6959	7754	9693
LOG BOTTOM (ft)	5605	6519	6962	7754	9693	9769
HOLE SIZE (in)	8.75	8.75	6	6	6	6
MUD DATA @ (ft)	5656	6474	7009	7804	9743	9819
MUD TYPE	WATER	WATER	WATER	WATER	WATER	WATER
DENSITY (lb / gal)	9.0	9.5	8.7	8.8	8.8	8.8
VISCOSITY (s / qt)	46	45	34	43	43	43
pH	9.0	8.0	8.5	7.5	7.5	7.5
FLUID LOSS (cm3 / 30)	-	-	-	-	-	-
SALINITY (ppm)	-	-	-	-	-	-
Rm (ohmm @ deg F)	-	-	-	-	-	-
Rmf (ohmm @ deg F)	-	-	-	-	-	-
MAX TEMP (deg F)	138	141	158	168	185	185
Rm @ MAX TEMP (ohmm)	-	-	-	-	-	-
LWD ENGINEER #1	S JOHNSON	S JOHNSON	S JOHNSON	S JOHNSON	S JOHNSON	S JOHNSON
LWD ENGINEER #2	P BARTLETT	P BARTLETT	P BARTLETT	P BARTLETT	P BARTLETT	P BARTLETT
LWD ENGINEER #3	J WALSH	J WALSH	J WALSH	J WALSH	J WALSH	J WALSH

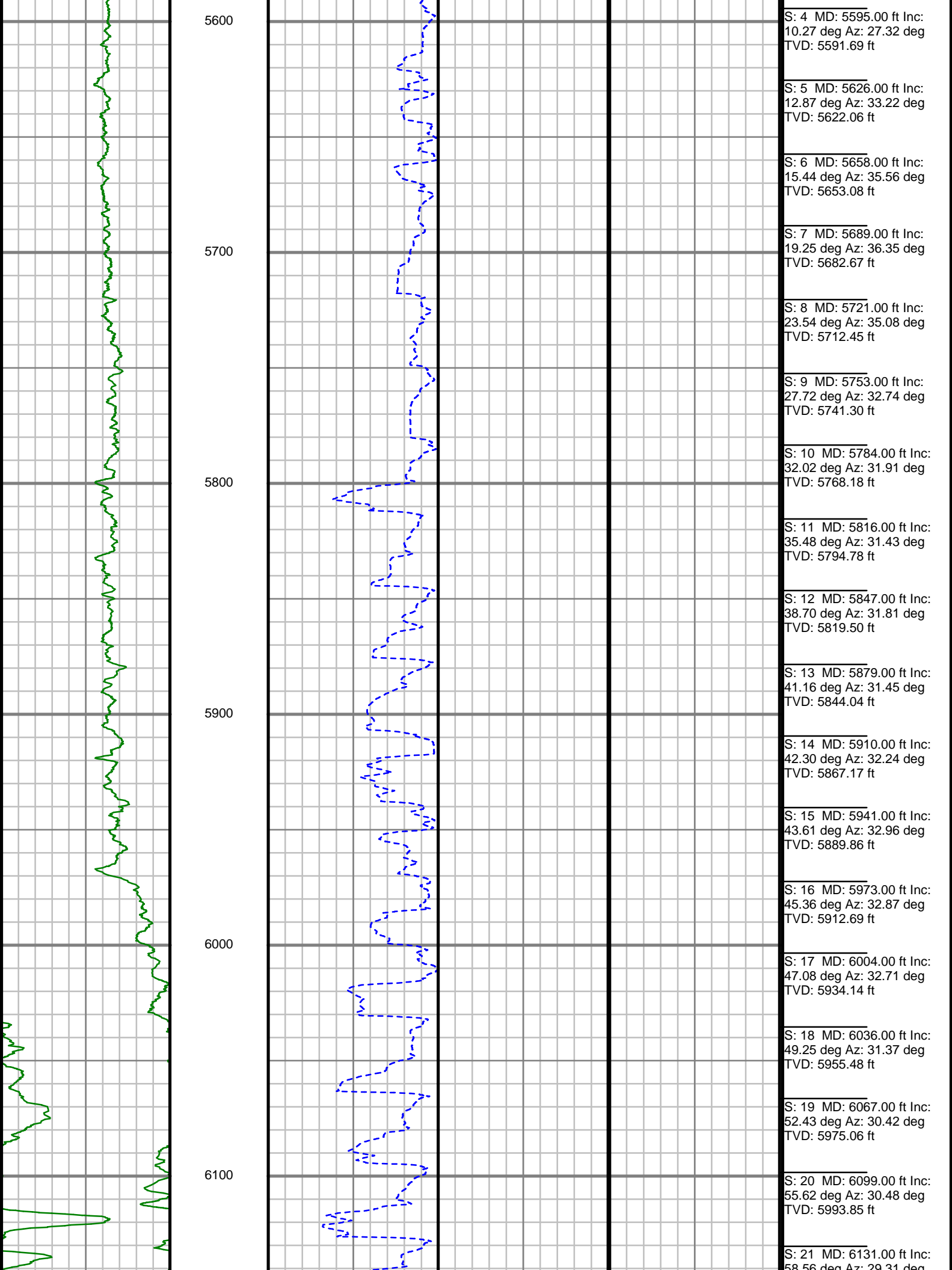
Run Data						
RUN NUMBER	7	8	9			
START DATE	5/13/2012	5/15/2012	05/17/2012			
START TIME	23:05	22:30	02:02			
END DATE	5/15/2012	05/17/2012	05/19/2012			
END TIME	22:00	05:30	05:30			
DEPTH IN (ft)	9819	10313	10662			
DEPTH OUT (ft)	10313	10662	11307			
LOG TOP (ft)	9769	10263	10612			
LOG BOTTOM (ft)	10263	10612	11257			
HOLE SIZE (in)	6	6	6			
MUD DATA @ (ft)	10313	10662	11307			
MUD TYPE	WATER	WATER	WATER			
DENSITY (lb / gal)	8.9	9	8.9			
VISCOSITY (s / qt)	44	44	44			
pH	7.5	7.5	7.5			
FLUID LOSS (cm3 / 30)	-	-	-			
SALINITY (ppm)	-	-	-			
Rm (ohmm @ deg F)	-	-	-			
Rmf (ohmm @ deg F)	-	-	-			
MAX TEMP (deg F)	191	196	208			
Rm @ MAX TEMP (ohmm)	-	-	-			
LWD ENGINEER #1	S JOHNSON	S JOHNSON	S JOHNSON			
LWD ENGINEER #2	P BARTLETT	P BARTLETT	P BARTLETT			
LWD ENGINEER #3	J WALSH	J WALSH	J WALSH			

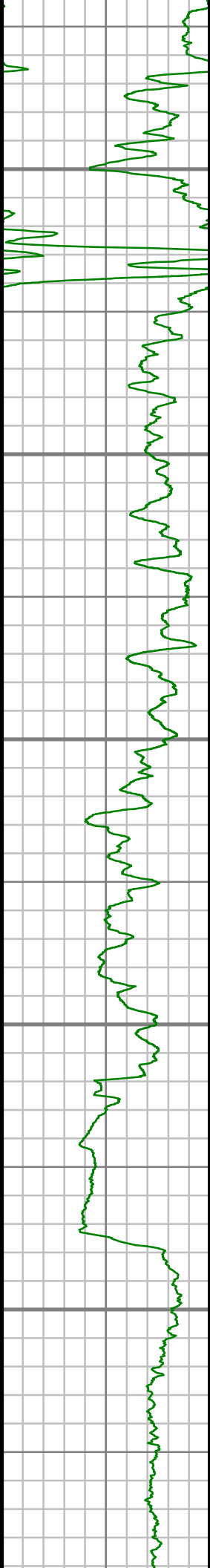
Remarks
CONDOR ENERGY PRODUCTION AFE# 2012-1
SCIENTIFIC DRILLING INTERNATIONAL JOB# 41HMP1204552
SCIENTIFIC DRILLING INTERNATIONAL WO# 156612
FLAT AVERAGE OF 1.0 FT APPLIED TO GAMMA RAY CURVE
FLAT AVERAGE OF 1.0 FT APPLIED TO ROP CURVE
FLAT AVERAGE OF 1.0 FT APPLIED TO AZI GAMMA RAY CURVE
ALL REFERENCES IN THE DEPTH TRACK ARE AT BIT DEPTH.
ALL DATA IS MEMORY DATA UNLESS STATED OTHERWISE.
There was a 30' tally Mistake after 9716 MD This Log shows the 100' Surveys from 9716 to 10909
RUN # :1 MWD/GAMMA RAY/GAINC LOGGING RUN
SENSOR S/N PULSER= 128-005 / CONT=603 / MWD EYE-576 / GAMMA = 167 /GAINC= 116
BIT TO SENSOR OFFSET: SURVEY 60FT / GAMMA 49.52 FT/ GAINC 40.58FT
RUN # :2 MWD/GAMMA RAY/GAINC LOGGING RUN
SENSOR S/N PULSER= 128-005 / CONT=603 / MWD EYE-576 / GAMMA = 167 /GAINC= 116
BIT TO SENSOR OFFSET: SURVEY 60FT / GAMMA 49.52 FT/ GAINC 40.58FT
RUN # :3 MWD/GAMMA RAY/AZI-GAINC LOGGING RUN
SENSOR S/N PULSER= 78-030 / CONT=603 / MWD EYE-576 / GAMMA = 167 /AZGAINC= 116
BIT TO SENSOR OFFSET: SURVEY 59 FT / GAMMA 47.00 / GAINC 38.53

Remarks
RUN # :4 MWD/GAMMA RAY/AZI-GAINC LOGGING RUN
SENSOR S/N PULSER= 78-158MH / CONT=820 / MWD EYE= 217 / GAMMA = 227 /AZGAINC= 087
BIT TO SENSOR OFFSET: SURVEY 58 FT / GAMMA 49.83 / GAINC 40.83
RUN # :5 MWD/GAMMA RAY/AZI-GAINC LOGGING RUN
SENSOR S/N PULSER= 78-158MH / CONT=820 / MWD EYE= 217 / GAMMA = 227 /AZGAINC= 087
BIT TO SENSOR OFFSET: SURVEY 58 FT / GAMMA 49.83 / GAINC 40.83
RUN # :6 MWD/GAMMA RAY/AZI-GAINC LOGGING RUN
SENSOR S/N PULSER= 78-030 / CONT=603 / MWD EYE=576 / GAMMA = 167 /AZGAINC= 116
BIT TO SENSOR OFFSET: SURVEY 58 FT / GAMMA 49.83 / GAINC 40.83
RUN # :7 MWD/GAMMA RAY/AZI-GAINC LOGGING RUN
SENSOR S/N PULSER= 78-030 / CONT=603 / MWD EYE=576 / GAMMA = 167 /AZGAINC= 116
BIT TO SENSOR OFFSET: SURVEY 58 FT / GAMMA 49.83 / GAINC 40.83
RUN # :8 MWD/GAMMA RAY/AZI-GAINC LOGGING RUN
SENSOR S/N PULSER= 78-030 / CONT=603 / MWD EYE=576 / GAMMA = 167 /AZGAINC= 116
BIT TO SENSOR OFFSET: SURVEY 58 FT / GAMMA 49.84 / GAINC 40.84
RUN # :9 MWD/GAMMA RAY/AZI-GAINC LOGGING RUN
SENSOR S/N PULSER= 78-158MH / CONT=820 / MWD EYE=217 / GAMMA = 227 /AZGAINC= 087
BIT TO SENSOR OFFSET: SURVEY 58 FT / GAMMA 49.82 / GAINC 40.82

All interpretations are opinions based on inferences from electrical or other measurements and we cannot, and do not guarantee the accuracy or correctness of any interpretations, and we shall not, except in the case of gross or willful negligence on our part, be liable or responsible for any loss, costs, damages or expenses incurred or sustained by anyone resulting from any interpretation made by any of our officers, agents or employees. These interpretations are also subject to our general terms and conditions as set out in our current price schedule.







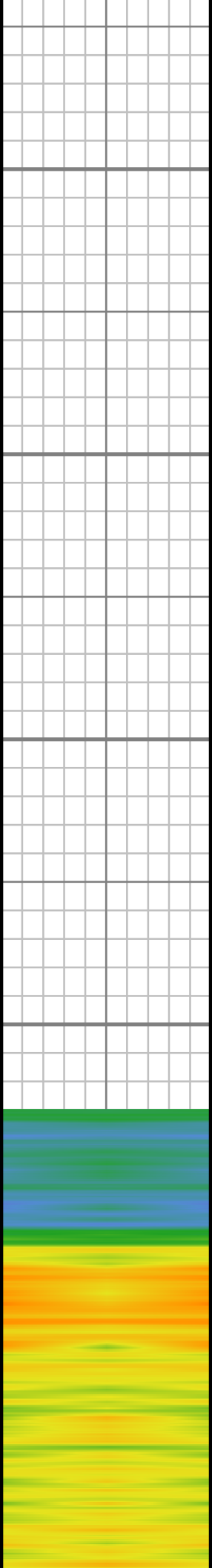
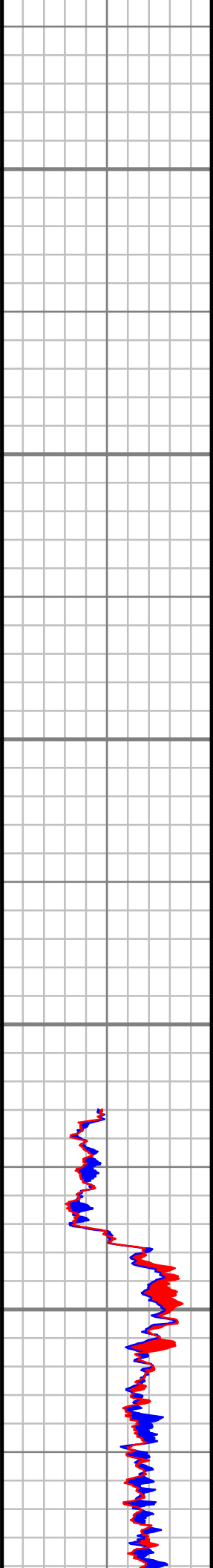
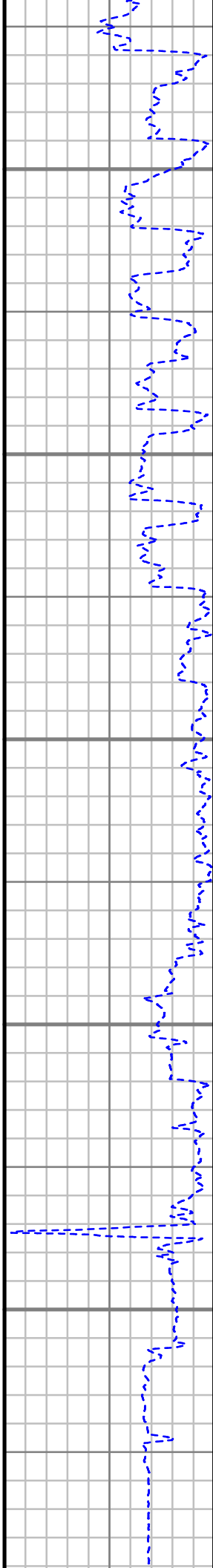
6200

6300

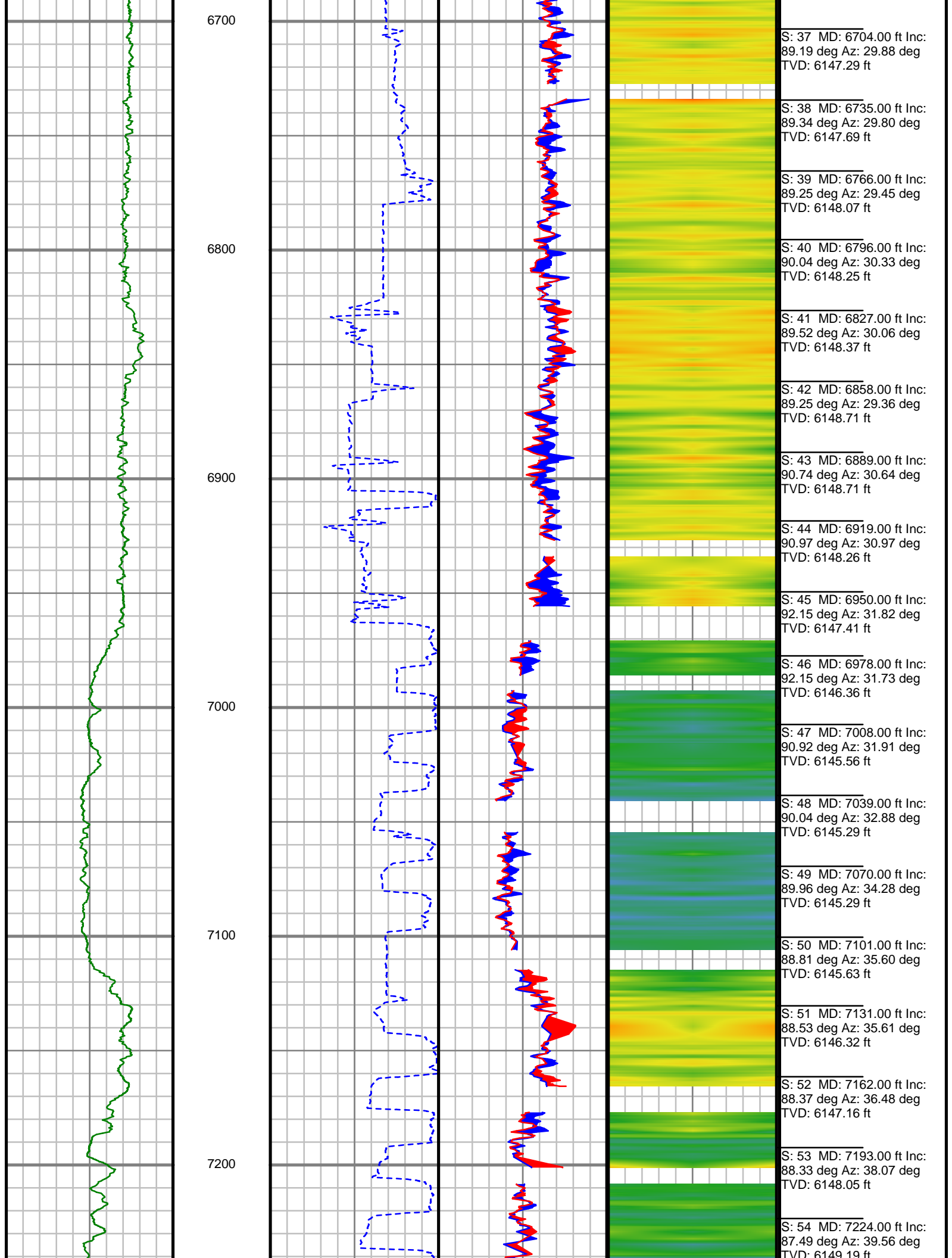
6400

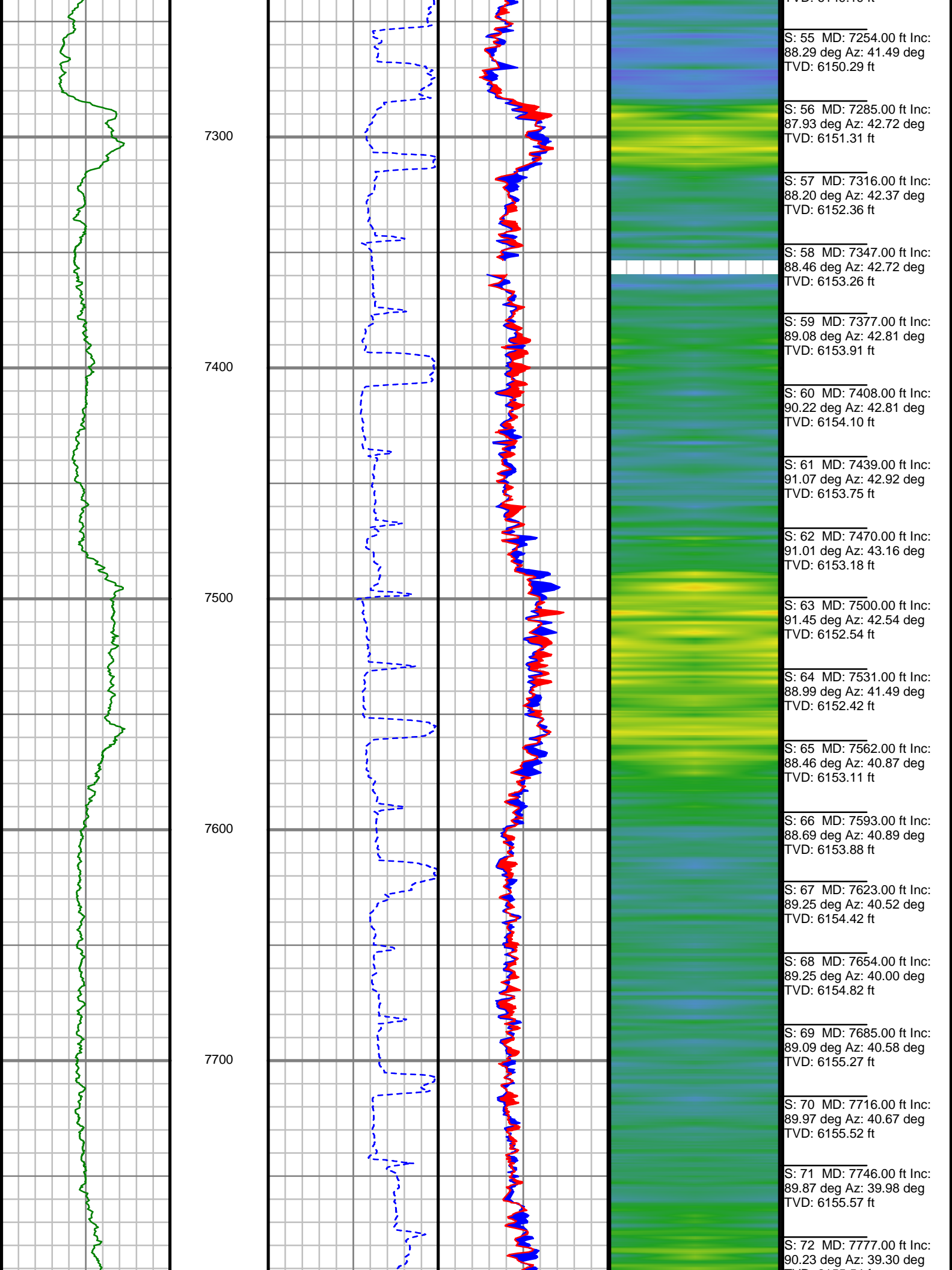
6500

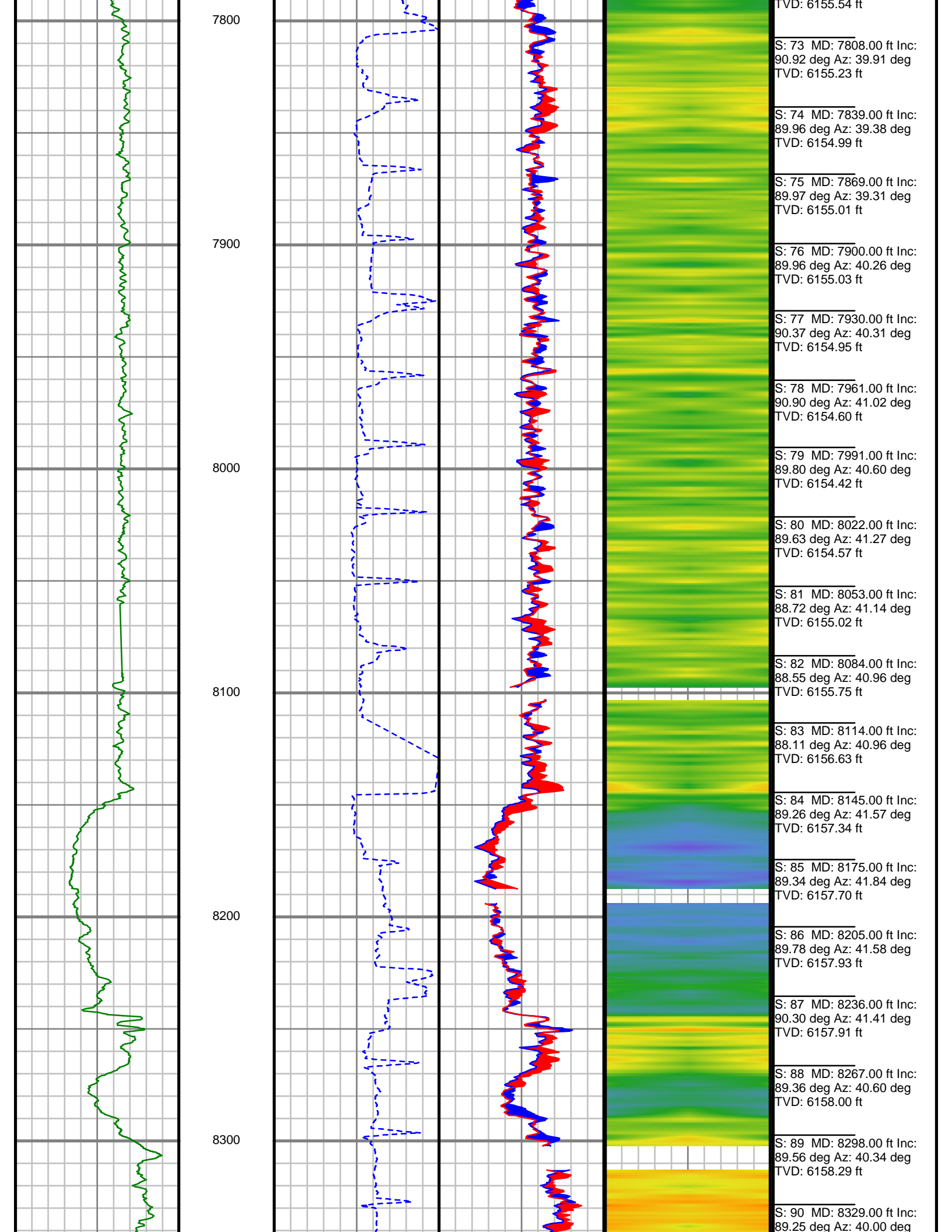
6600

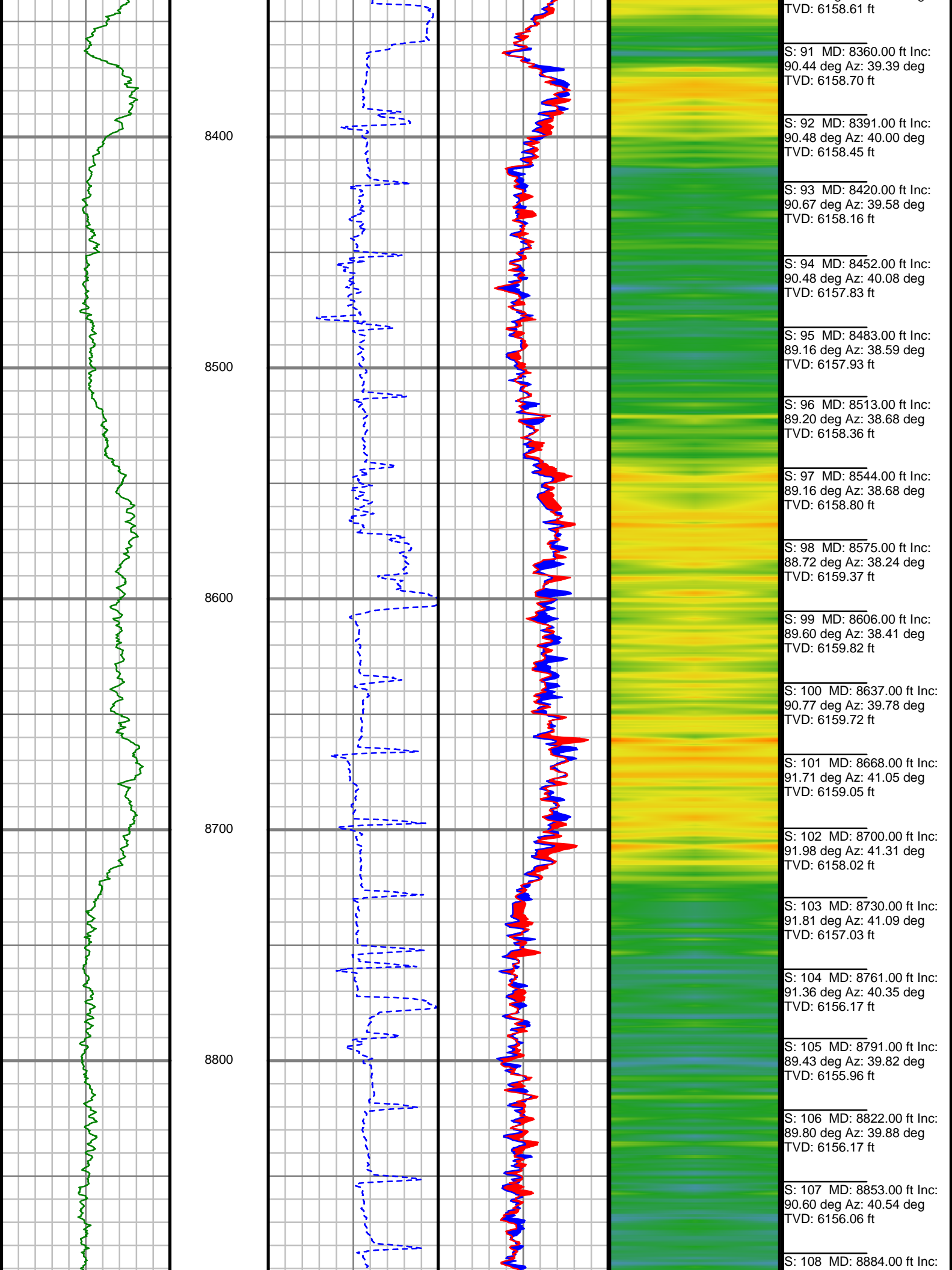


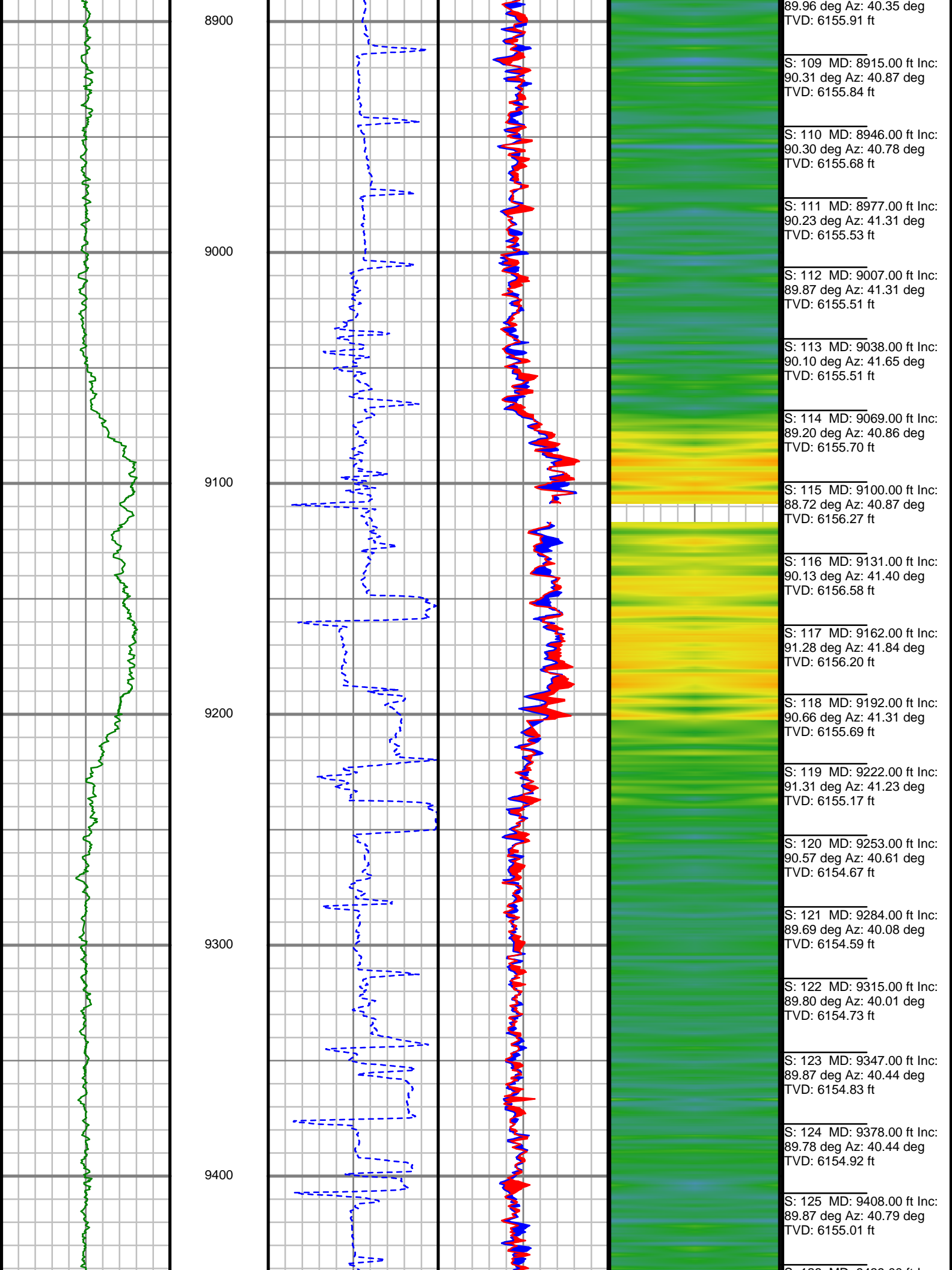
S: 22	MD: 6162.00 ft	Inc: 60.71 deg	Az: 29.11 deg	TVD: 6026.91 ft
S: 23	MD: 6194.00 ft	Inc: 62.02 deg	Az: 30.40 deg	TVD: 6042.25 ft
S: 24	MD: 6225.00 ft	Inc: 63.75 deg	Az: 30.32 deg	TVD: 6056.37 ft
S: 25	MD: 6257.00 ft	Inc: 66.28 deg	Az: 30.12 deg	TVD: 6069.89 ft
S: 26	MD: 6288.00 ft	Inc: 67.97 deg	Az: 30.53 deg	TVD: 6081.94 ft
S: 27	MD: 6320.00 ft	Inc: 68.71 deg	Az: 31.06 deg	TVD: 6093.75 ft
S: 28	MD: 6351.00 ft	Inc: 69.28 deg	Az: 31.85 deg	TVD: 6104.87 ft
S: 29	MD: 6382.00 ft	Inc: 71.24 deg	Az: 32.23 deg	TVD: 6115.34 ft
S: 30	MD: 6414.00 ft	Inc: 75.27 deg	Az: 32.79 deg	TVD: 6124.55 ft
S: 31	MD: 6445.00 ft	Inc: 80.67 deg	Az: 33.10 deg	TVD: 6131.01 ft
S: 32	MD: 6477.00 ft	Inc: 83.32 deg	Az: 34.16 deg	TVD: 6135.47 ft
S: 33	MD: 6508.00 ft	Inc: 84.26 deg	Az: 33.81 deg	TVD: 6138.83 ft
S: 34	MD: 6612.00 ft	Inc: 88.37 deg	Az: 32.26 deg	TVD: 6145.51 ft
S: 35	MD: 6643.00 ft	Inc: 88.90 deg	Az: 31.82 deg	TVD: 6146.25 ft
S: 36	MD: 6673.00 ft	Inc: 88.99 deg	Az: 30.86 deg	TVD: 6146.80 ft

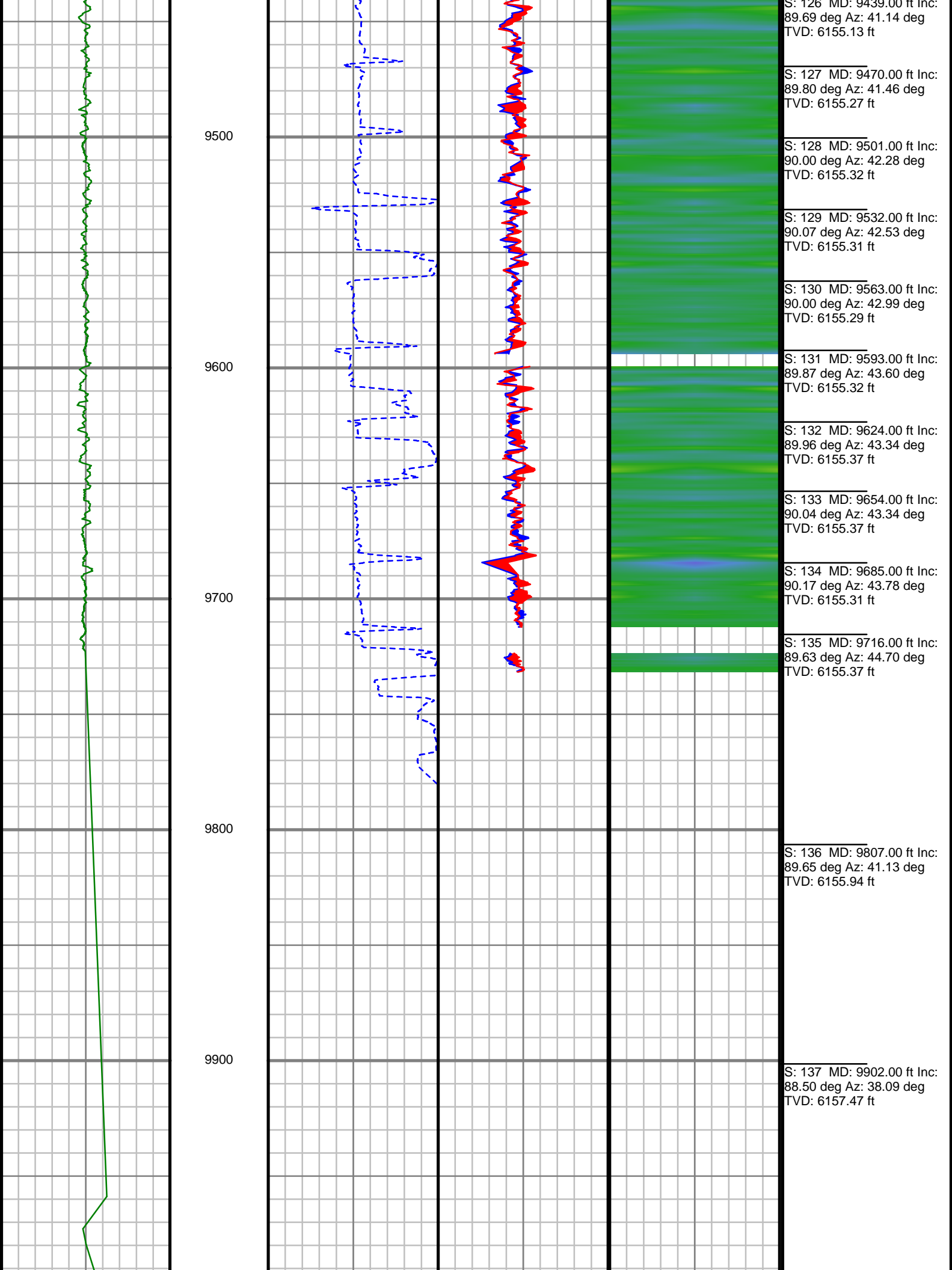


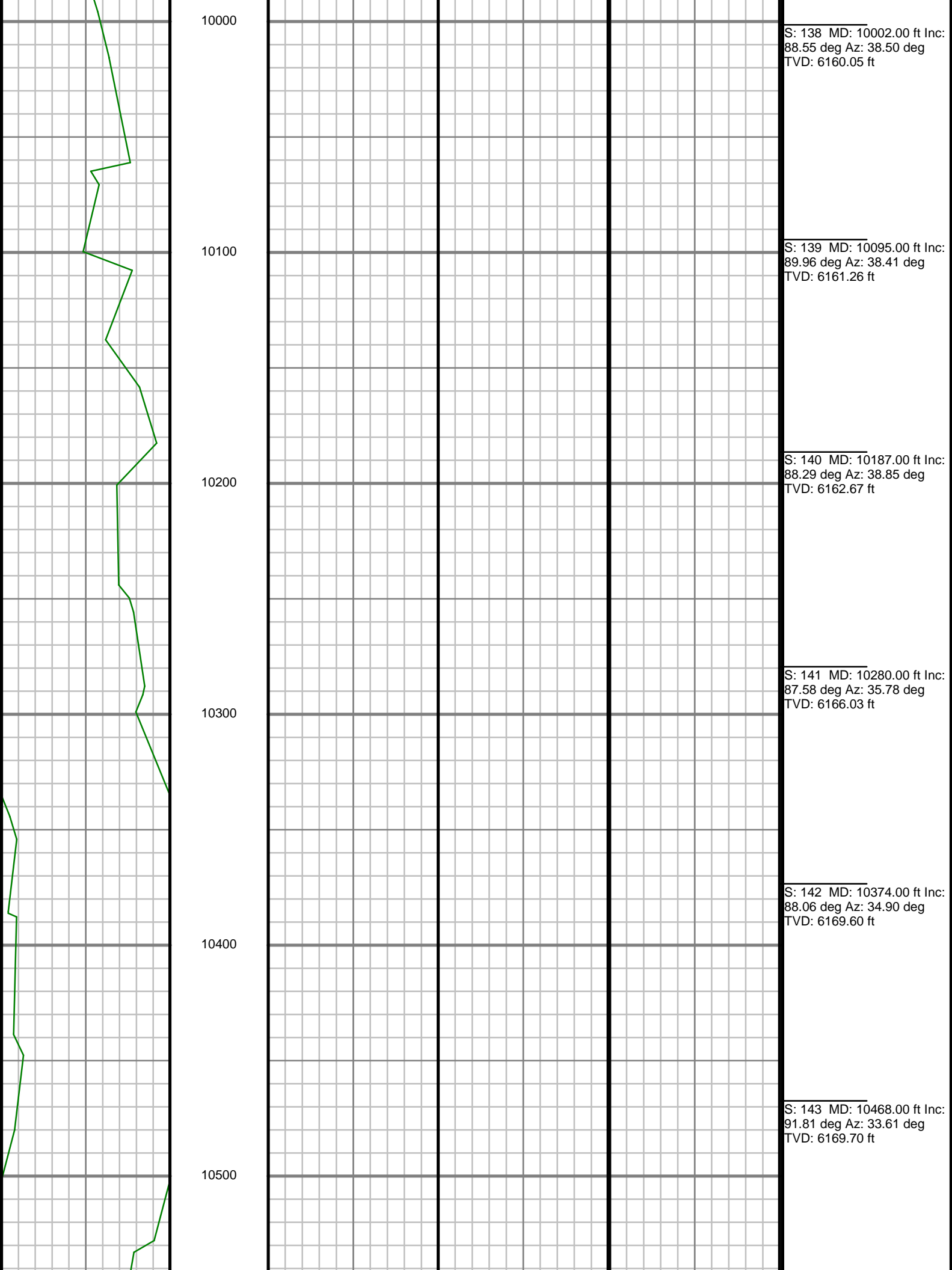


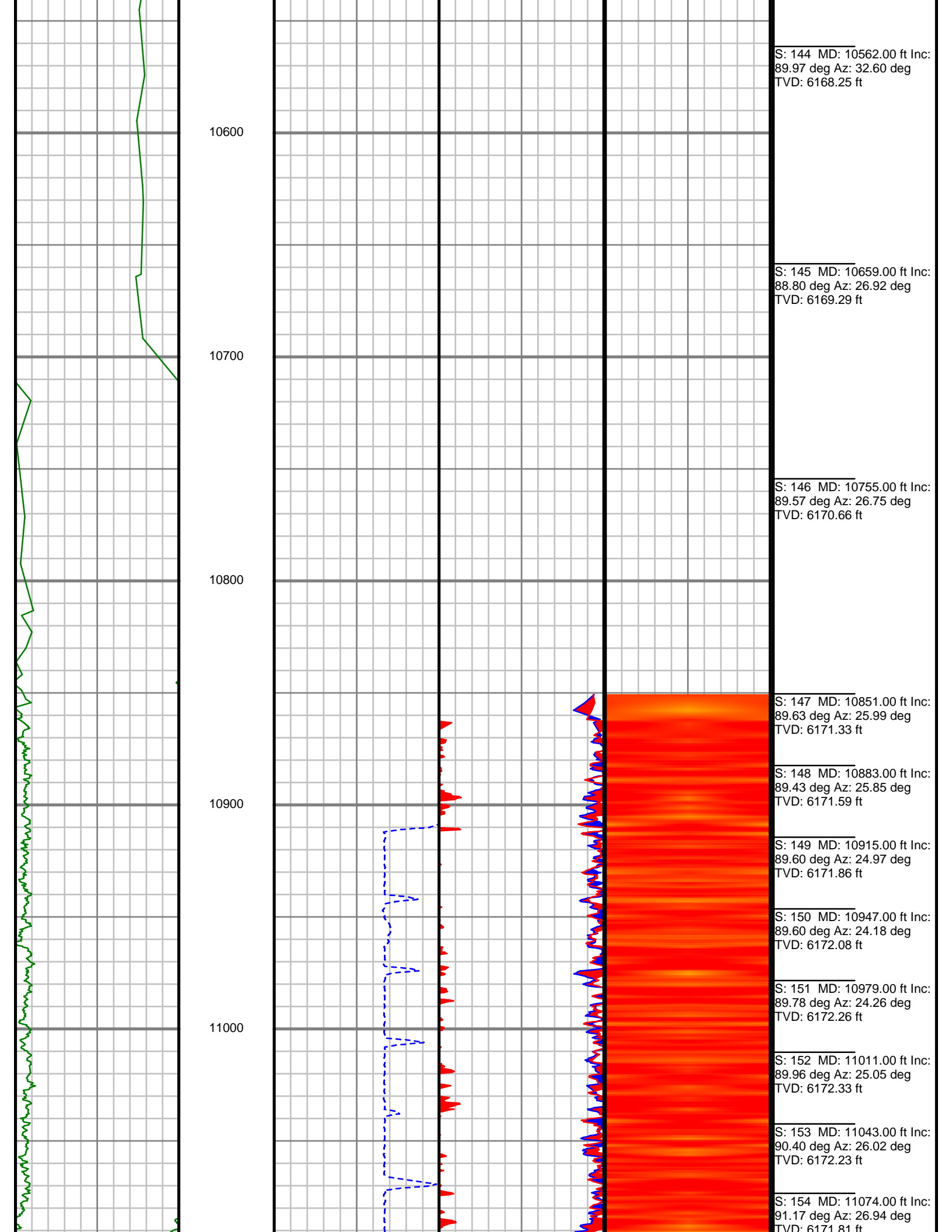














MWD Survey Report
for
Condor Energy Technology LLC
1125 Blackawk Plaza Cir.
Danville, CA 94506

Well Location	Family Ford Trust 2H Pad
Well Name	Ford Family Trust 2H
Rig Name	Cade 21
Survey Date	5/18/2012
Latitude	40°31'30.648"N
B Total	53181 NT
Dip	67.24 deg
Magnetic Declination	8.36 deg
North Reference	True North
Grid Correction	None
Depth Reference	RKB (16.00 ft)
Calculation Method	Minimum Curvature
Section (VS) Ref	0.00N (ft), 0.00E (ft), 39.24Azim (deg)
Definitive Survey	Ford Family Trust 2H Tally mistake after 9716
Operator(s)	J Walsh, P Bartlett, S Johnson

Well Notes



Survey:		Ford Family Trust 2H										
Survey Date:		5/18/2012										
MD	Inc	Azim	TVD	VS	+N/-S	+E/-W	Northing	Easting	Dogleg	Severity	Dogleg	Course Length
ft	deg	deg	ft	ft	ft	ft	ft	ft		7100ft	deg	ft
5489.00	3.10	155.00	5486.15	0.76	-50.71	63.29	1437496.23	3408462.55		Invalid	Invalid	Invalid
5501.00	2.13	145.24	5498.14	0.56	-51.19	63.55	1437495.75	3408462.81		8.88	1.07	12.00
5533.00	2.39	41.89	5530.12	1.06	-51.18	64.34	1437495.76	3408463.60		11.08	3.55	32.00
5564.00	6.50	27.59	5561.02	3.43	-49.14	65.58	1437497.80	3408464.84		13.65	4.23	31.00
5595.00	10.27	27.32	5591.69	7.85	-45.13	67.67	1437501.81	3408466.93		12.13	3.76	31.00
5626.00	12.87	33.22	5622.06	13.99	-39.79	70.83	1437507.15	3408470.09		9.22	2.86	31.00
5658.00	15.44	35.56	5653.08	21.79	-33.34	75.26	1437513.60	3408474.52		8.23	2.63	32.00
5689.00	19.25	36.35	5682.67	31.01	-25.86	80.69	1437521.08	3408479.95		12.31	3.82	31.00
5721.00	23.54	35.08	5712.45	42.66	-16.38	87.49	1437530.56	3408486.75		13.48	4.31	32.00
5753.00	27.72	32.74	5741.30	56.43	-4.88	95.19	1437542.06	3408494.45		13.44	4.30	32.00
5784.00	32.02	31.91	5768.18	71.75	8.16	103.44	1437555.10	3408502.70		13.93	4.32	31.00
5816.00	35.48	31.43	5794.78	89.38	23.30	112.77	1437570.24	3408512.03		10.85	3.47	32.00
5847.00	38.70	31.81	5819.50	107.90	39.21	122.57	1437586.15	3408521.83		10.40	3.23	31.00
5879.00	41.16	31.45	5844.04	128.26	56.70	133.34	1437603.64	3408532.60		7.71	2.47	32.00
5910.00	42.30	32.24	5867.17	148.72	74.23	144.23	1437621.17	3408543.49		4.04	1.25	31.00
5941.00	43.61	32.96	5889.86	169.70	92.02	155.61	1437638.96	3408554.87		4.53	1.41	31.00
5973.00	45.36	32.87	5912.69	191.99	110.84	167.79	1437657.78	3408567.05		5.45	1.74	32.00
6004.00	47.08	32.71	5934.14	214.23	129.66	179.91	1437676.60	3408579.17		5.57	1.73	31.00
6036.00	49.25	31.37	5955.48	237.88	149.87	192.56	1437696.81	3408591.82		7.46	2.39	32.00
6067.00	52.43	30.42	5975.06	261.66	170.49	204.89	1437717.43	3408604.15		10.54	3.27	31.00
6099.00	55.62	30.48	5993.85	287.25	192.82	218.02	1437739.76	3408617.28		9.96	3.19	32.00
6131.00	58.56	29.31	6011.24	313.75	216.10	231.40	1437763.04	3408630.66		9.68	3.10	32.00
6162.00	60.71	29.11	6026.91	340.09	239.45	244.45	1437786.39	3408643.71		6.98	2.16	31.00
6194.00	62.02	30.40	6042.25	367.79	263.83	258.39	1437810.77	3408657.65		5.42	1.73	32.00
6225.00	63.75	30.32	6056.37	395.05	287.64	272.33	1437834.58	3408671.59		5.58	1.73	31.00
6257.00	66.28	30.12	6069.89	423.69	312.70	286.93	1437859.64	3408686.19		7.91	2.53	32.00
6288.00	67.97	30.53	6081.94	451.91	337.35	301.35	1437884.29	3408700.61		5.59	1.73	31.00
6320.00	68.71	31.06	6093.75	481.32	362.90	316.58	1437909.84	3408715.84		2.79	0.89	32.00
6351.00	69.28	31.85	6104.87	510.00	387.58	331.68	1437934.52	3408730.94		3.00	0.93	31.00
6382.00	71.24	32.23	6115.34	538.94	412.32	347.16	1437959.26	3408746.42		6.41	1.99	31.00
6414.00	75.27	32.79	6124.55	569.37	438.15	363.63	1437985.09	3408762.89		12.72	4.07	32.00
6445.00	80.67	33.10	6131.01	599.49	463.58	380.11	1438010.52	3408779.37		17.43	5.40	31.00
6477.00	83.32	34.16	6135.47	631.03	489.97	397.66	1438036.91	3408796.92		8.89	2.85	32.00
6508.00	84.26	33.81	6138.83	661.72	515.52	414.89	1438062.46	3408814.15		3.23	1.00	31.00
6612.00	88.37	32.26	6145.51	764.87	602.51	471.45	1438149.45	3408870.71		4.23	4.40	104.00
6643.00	88.90	31.82	6146.25	795.61	628.78	487.89	1438175.72	3408887.15		2.21	0.69	31.00
6673.00	88.99	30.86	6146.80	825.32	654.39	503.49	1438201.33	3408902.75		3.24	0.97	30.00
6704.00	89.19	29.88	6147.29	855.95	681.14	519.16	1438228.08	3408918.42		3.23	1.00	31.00
6735.00	89.34	29.80	6147.69	886.53	708.03	534.58	1438254.97	3408933.84		0.53	0.16	31.00
6766.00	89.25	29.45	6148.07	917.09	734.97	549.91	1438281.91	3408949.17		1.17	0.36	31.00

Survey Report

Survey:		Ford Family Trust 2H									
Survey Date:		5/18/2012									
MD	Inc	Azim	TVD	VS	+N/-S	+E/-W	Northing	Easting	Dogleg Severity	Dogleg	Course Length
ft	deg	deg	ft	ft	ft	ft	ft	ft	7100ft	deg	ft
6796.00	90.04	30.33	6148.25	946.69	760.98	564.85	1438307.92	3408964.11	3.94	1.18	30.00
6827.00	89.52	30.06	6148.37	977.31	787.77	580.45	1438334.71	3408979.71	1.90	0.59	31.00
6858.00	89.25	29.36	6148.71	1007.88	814.70	595.81	1438361.64	3408995.07	2.42	0.75	31.00
6889.00	90.74	30.64	6148.71	1038.47	841.54	611.31	1438388.48	3409010.57	6.32	1.96	31.00
6919.00	90.97	30.97	6148.26	1068.15	867.31	626.67	1438414.25	3409025.93	1.36	0.41	30.00
6950.00	92.15	31.82	6147.41	1098.84	893.76	642.82	1438440.70	3409042.08	4.69	1.45	31.00
6978.00	92.15	31.73	6146.36	1126.59	917.54	657.55	1438464.48	3409056.81	0.31	0.09	28.00
7008.00	90.92	31.91	6145.56	1156.32	943.02	673.36	1438489.96	3409072.62	4.15	1.24	30.00
7039.00	90.04	32.88	6145.29	1187.10	969.20	689.97	1438516.14	3409089.23	4.22	1.31	31.00
7070.00	89.96	34.28	6145.29	1217.95	995.02	707.12	1438541.96	3409106.38	4.55	1.41	31.00
7101.00	88.81	35.60	6145.63	1248.86	1020.43	724.87	1438567.37	3409124.13	5.63	1.74	31.00
7131.00	88.53	35.61	6146.32	1278.79	1044.82	742.33	1438591.76	3409141.59	0.96	0.29	30.00
7162.00	88.37	36.48	6147.16	1309.73	1069.87	760.57	1438616.81	3409159.83	2.85	0.88	31.00
7193.00	88.33	38.07	6148.05	1340.70	1094.53	779.33	1438641.47	3409178.59	5.13	1.59	31.00
7224.00	87.49	39.56	6149.19	1371.68	1118.67	798.75	1438665.61	3409198.01	5.49	1.70	31.00
7254.00	88.29	41.49	6150.29	1401.65	1141.45	818.23	1438688.39	3409217.49	6.96	2.09	30.00
7285.00	87.93	42.72	6151.31	1432.59	1164.44	839.00	1438711.38	3409238.26	4.13	1.28	31.00
7316.00	88.20	42.37	6152.36	1463.52	1187.27	859.95	1438734.21	3409259.21	1.42	0.44	31.00
7347.00	88.46	42.72	6153.26	1494.46	1210.10	880.90	1438757.04	3409280.16	1.42	0.44	31.00
7377.00	89.08	42.81	6153.91	1524.39	1232.12	901.27	1438779.06	3409300.53	2.07	0.62	30.00
7408.00	90.22	42.81	6154.10	1555.33	1254.86	922.33	1438801.80	3409321.59	3.69	1.14	31.00
7439.00	91.07	42.92	6153.75	1586.27	1277.58	943.42	1438824.52	3409342.68	2.78	0.86	31.00
7470.00	91.01	43.16	6153.18	1617.19	1300.23	964.58	1438847.17	3409363.84	0.79	0.24	31.00
7500.00	91.45	42.54	6152.54	1647.13	1322.22	984.97	1438869.16	3409384.23	2.52	0.76	30.00
7531.00	88.99	41.49	6152.42	1678.09	1345.25	1005.72	1438892.19	3409404.98	8.64	2.68	31.00
7562.00	88.46	40.87	6153.11	1709.06	1368.57	1026.13	1438915.51	3409425.39	2.61	0.81	31.00
7593.00	88.69	40.89	6153.88	1740.04	1392.00	1046.41	1438938.94	3409445.67	0.75	0.23	31.00
7623.00	89.25	40.52	6154.42	1770.02	1414.74	1065.98	1438961.68	3409465.24	2.23	0.67	30.00
7654.00	89.25	40.00	6154.82	1801.02	1438.39	1086.01	1438985.33	3409485.27	1.70	0.53	31.00
7685.00	89.09	40.58	6155.27	1832.01	1462.04	1106.05	1439008.98	3409505.31	1.95	0.60	31.00
7716.00	89.97	40.67	6155.52	1863.00	1485.57	1126.23	1439032.51	3409525.49	2.83	0.88	31.00
7746.00	89.87	39.98	6155.57	1892.99	1508.44	1145.65	1439055.38	3409544.91	2.31	0.69	30.00
7777.00	90.23	39.30	6155.54	1923.99	1532.31	1165.42	1439079.25	3409564.68	2.51	0.78	31.00
7808.00	90.92	39.91	6155.23	1954.99	1556.19	1185.19	1439103.13	3409584.45	2.97	0.92	31.00
7839.00	89.96	39.38	6154.99	1985.99	1580.06	1204.96	1439127.00	3409604.22	3.55	1.10	31.00
7869.00	89.97	39.31	6155.01	2015.99	1603.26	1223.98	1439150.20	3409623.24	0.23	0.07	30.00
7900.00	89.96	40.26	6155.03	2046.98	1627.08	1243.82	1439174.02	3409643.08	3.05	0.95	31.00
7930.00	90.37	40.31	6154.95	2076.98	1649.97	1263.22	1439196.91	3409662.48	1.39	0.42	30.00
7961.00	90.90	41.02	6154.60	2107.97	1673.48	1283.42	1439220.42	3409682.68	2.86	0.89	31.00
7991.00	89.80	40.60	6154.42	2137.96	1696.19	1303.02	1439243.13	3409702.28	3.95	1.18	30.00

Survey Report

Survey:			Ford Family Trust 2H								
Survey Date:			5/18/2012								
MD	Inc	Azim	TVD	VS	+N/-S	+E/-W	Northing	Easting	Dogleg Severity	Dogleg	Course Length
ft	deg	deg	ft	ft	ft	ft	ft	ft	7100ft	deg	ft
8022.00	89.63	41.27	6154.57	2168.94	1719.61	1323.33	1439266.55	3409722.59	2.22	0.69	31.00
8053.00	88.72	41.14	6155.02	2199.92	1742.93	1343.75	1439289.87	3409743.01	2.95	0.92	31.00
8084.00	88.55	40.96	6155.75	2230.90	1766.30	1364.10	1439313.24	3409763.36	0.80	0.25	31.00
8114.00	88.11	40.96	6156.63	2260.87	1788.94	1383.76	1439335.88	3409783.02	1.47	0.44	30.00
8145.00	89.26	41.57	6157.34	2291.84	1812.24	1404.20	1439359.18	3409803.46	4.21	1.30	31.00
8175.00	89.34	41.84	6157.70	2321.81	1834.63	1424.16	1439381.57	3409823.42	0.94	0.28	30.00
8205.00	89.78	41.58	6157.93	2351.78	1857.03	1444.12	1439403.97	3409843.38	1.71	0.51	30.00
8236.00	90.30	41.41	6157.91	2382.76	1880.25	1464.66	1439427.19	3409863.92	1.77	0.55	31.00
8267.00	89.36	40.60	6158.00	2413.74	1903.64	1485.00	1439450.58	3409884.26	3.99	1.24	31.00
8298.00	89.56	40.34	6158.29	2444.73	1927.22	1505.12	1439474.16	3409904.38	1.07	0.33	31.00
8329.00	89.25	40.00	6158.61	2475.73	1950.91	1525.11	1439497.85	3409924.37	1.49	0.46	31.00
8360.00	90.44	39.39	6158.70	2506.73	1974.77	1544.91	1439521.71	3409944.17	4.29	1.33	31.00
8391.00	90.48	40.00	6158.45	2537.72	1998.62	1564.71	1439545.56	3409963.97	1.96	0.61	31.00
8420.00	90.67	39.58	6158.16	2566.72	2020.90	1583.27	1439567.84	3409982.53	1.56	0.45	29.00
8452.00	90.48	40.08	6157.83	2598.72	2045.47	1603.76	1439592.41	3410003.02	1.67	0.53	32.00
8483.00	89.16	38.59	6157.93	2629.72	2069.45	1623.41	1439616.39	3410022.67	6.43	1.99	31.00
8513.00	89.20	38.68	6158.36	2659.71	2092.88	1642.14	1439639.82	3410041.40	0.32	0.10	30.00
8544.00	89.16	38.68	6158.80	2690.71	2117.08	1661.51	1439664.02	3410060.77	0.10	0.03	31.00
8575.00	88.72	38.24	6159.37	2721.70	2141.35	1680.79	1439688.29	3410080.05	2.01	0.62	31.00
8606.00	89.60	38.41	6159.82	2752.69	2165.66	1700.01	1439712.60	3410099.27	2.89	0.90	31.00
8637.00	90.77	39.78	6159.72	2783.69	2189.72	1719.56	1439736.66	3410118.82	5.79	1.80	31.00
8668.00	91.71	41.05	6159.05	2814.67	2213.32	1739.65	1439760.26	3410138.91	5.11	1.58	31.00
8700.00	91.98	41.31	6158.02	2846.64	2237.39	1760.71	1439784.33	3410159.97	1.17	0.37	32.00
8730.00	91.81	41.09	6157.03	2876.61	2259.95	1780.46	1439806.89	3410179.72	0.94	0.28	30.00
8761.00	91.36	40.35	6156.17	2907.58	2283.43	1800.68	1439830.37	3410199.94	2.79	0.86	31.00
8791.00	89.43	39.82	6155.96	2937.58	2306.39	1819.99	1439853.33	3410219.25	6.68	2.01	30.00
8822.00	89.80	39.88	6156.17	2968.57	2330.19	1839.86	1439877.13	3410239.12	1.21	0.37	31.00
8853.00	90.60	40.54	6156.06	2999.57	2353.86	1859.87	1439900.80	3410259.13	3.35	1.04	31.00
8884.00	89.96	40.35	6155.91	3030.56	2377.45	1879.98	1439924.39	3410279.24	2.17	0.67	31.00
8915.00	90.31	40.87	6155.84	3061.55	2400.99	1900.16	1439947.93	3410299.42	2.04	0.63	31.00
8946.00	90.30	40.78	6155.68	3092.54	2424.44	1920.43	1439971.38	3410319.69	0.30	0.09	31.00
8977.00	90.23	41.31	6155.53	3123.53	2447.82	1940.78	1439994.76	3410340.04	1.73	0.54	31.00
9007.00	89.87	41.31	6155.51	3153.51	2470.35	1960.59	1440017.29	3410359.85	1.22	0.37	30.00
9038.00	90.10	41.65	6155.51	3184.48	2493.58	1981.12	1440040.52	3410380.38	1.33	0.41	31.00
9069.00	89.20	40.86	6155.70	3215.46	2516.88	2001.57	1440063.82	3410400.83	3.88	1.20	31.00
9100.00	88.72	40.87	6156.27	3246.44	2540.32	2021.85	1440087.26	3410421.11	1.52	0.47	31.00
9131.00	90.13	41.40	6156.58	3277.42	2563.66	2042.24	1440110.60	3410441.50	4.85	1.50	31.00
9162.00	91.28	41.84	6156.20	3308.39	2586.83	2062.83	1440133.77	3410462.09	3.95	1.22	31.00
9192.00	90.66	41.31	6155.69	3338.36	2609.27	2082.73	1440156.21	3410481.99	2.70	0.81	30.00
9222.00	91.31	41.23	6155.17	3368.34	2631.82	2102.52	1440178.76	3410501.78	2.18	0.65	30.00

Survey Report

Survey:		Ford Family Trust 2H										
Survey Date:		5/18/2012										
MD	Inc	Azim	TVD	VS	+N/-S	+E/-W	Northing	Easting	Dogleg	Severity	Dogleg	Course Length
ft	deg	deg	ft	ft	ft	ft	ft	ft	ft	7100ft	deg	ft
9253.00	90.57	40.61	6154.67	3399.32	2655.24	2122.82	1440202.18	3410522.08		3.09	0.96	31.00
9284.00	89.69	40.08	6154.59	3430.32	2678.86	2142.89	1440225.80	3410542.15		3.31	1.03	31.00
9315.00	89.80	40.01	6154.73	3461.31	2702.60	2162.84	1440249.54	3410562.10		0.43	0.13	31.00
9347.00	89.87	40.44	6154.83	3493.31	2727.03	2183.50	1440273.97	3410582.76		1.36	0.43	32.00
9378.00	89.78	40.44	6154.92	3524.30	2750.62	2203.61	1440297.56	3410602.87		0.28	0.09	31.00
9408.00	89.87	40.79	6155.01	3554.29	2773.40	2223.13	1440320.34	3410622.39		1.21	0.36	30.00
9439.00	89.69	41.14	6155.13	3585.28	2796.81	2243.46	1440343.75	3410642.72		1.27	0.39	31.00
9470.00	89.80	41.46	6155.27	3616.26	2820.10	2263.92	1440367.04	3410663.18		1.10	0.34	31.00
9501.00	90.00	42.28	6155.32	3647.23	2843.18	2284.61	1440390.12	3410683.87		2.71	0.84	31.00
9532.00	90.07	42.53	6155.31	3678.18	2866.07	2305.51	1440413.01	3410704.77		0.84	0.26	31.00
9563.00	90.00	42.99	6155.29	3709.12	2888.83	2326.56	1440435.77	3410725.82		1.49	0.46	31.00
9593.00	89.87	43.60	6155.32	3739.04	2910.66	2347.13	1440457.60	3410746.39		2.08	0.62	30.00
9624.00	89.96	43.34	6155.37	3769.96	2933.16	2368.46	1440480.10	3410767.72		0.90	0.28	31.00
9654.00	90.04	43.34	6155.37	3799.88	2954.98	2389.05	1440501.92	3410788.31		0.29	0.09	30.00
9685.00	90.17	43.78	6155.31	3830.80	2977.45	2410.41	1440524.39	3410809.67		1.49	0.46	31.00
9716.00	89.63	44.70	6155.37	3861.68	2999.66	2432.04	1440546.60	3410831.30		3.45	1.07	31.00
9807.00	89.65	41.13	6155.94	3952.47	3066.29	2493.99	1440613.23	3410893.25		3.93	3.57	91.00
9902.00	88.50	38.09	6157.47	4047.45	3139.46	2554.54	1440686.40	3410953.80		3.42	3.25	95.00
10002.00	88.55	38.50	6160.05	4147.40	3217.91	2616.49	1440764.85	3411015.75		0.41	0.41	100.00
10095.00	89.96	38.41	6161.26	4240.38	3290.73	2674.33	1440837.67	3411073.59		1.52	1.41	93.00
10187.00	88.29	38.85	6162.67	4332.36	3362.58	2731.76	1440909.52	3411131.02		1.88	1.73	92.00
10280.00	87.58	35.78	6166.03	4425.24	3436.49	2788.09	1440983.43	3411187.35		3.39	3.15	93.00
10374.00	88.06	34.90	6169.60	4518.95	3513.11	2842.42	1441060.05	3411241.68		1.06	1.00	94.00
10468.00	91.81	33.61	6169.70	4612.58	3590.79	2895.32	1441137.73	3411294.58		4.21	3.96	94.00
10562.00	89.97	32.60	6168.25	4706.02	3669.52	2946.66	1441216.46	3411345.92		2.24	2.10	94.00
10659.00	88.80	26.92	6169.29	4801.65	3753.68	2994.78	1441300.62	3411394.04		5.97	5.79	97.00
10755.00	89.57	26.75	6170.66	4895.40	3839.34	3038.11	1441386.28	3411437.37		0.82	0.79	96.00
10851.00	89.63	25.99	6171.33	4988.98	3925.35	3080.75	1441472.29	3411480.01		0.79	0.76	96.00
10883.00	89.43	25.85	6171.59	5020.12	3954.13	3094.73	1441501.07	3411493.99		0.78	0.25	32.00
10915.00	89.60	24.97	6171.86	5051.19	3983.03	3108.46	1441529.97	3411507.72		2.80	0.90	32.00
10947.00	89.60	24.18	6172.08	5082.15	4012.13	3121.77	1441559.07	3411521.03		2.47	0.79	32.00
10979.00	89.78	24.26	6172.26	5113.05	4041.32	3134.89	1441588.26	3411534.15		0.61	0.20	32.00
11011.00	89.96	25.05	6172.33	5144.02	4070.40	3148.24	1441617.34	3411547.50		2.53	0.81	32.00
11043.00	90.40	26.02	6172.23	5175.11	4099.27	3162.04	1441646.21	3411561.30		3.32	1.06	32.00
11074.00	91.17	26.94	6171.81	5205.34	4127.02	3175.86	1441673.96	3411575.12		3.86	1.20	31.00
11106.00	90.92	26.46	6171.22	5236.57	4155.60	3190.24	1441702.54	3411589.50		1.67	0.54	32.00
11138.00	90.40	25.98	6170.85	5267.75	4184.30	3204.37	1441731.24	3411603.63		2.21	0.71	32.00
11170.00	90.67	26.23	6170.56	5298.91	4213.04	3218.46	1441759.98	3411617.72		1.14	0.37	32.00
11202.00	90.48	26.55	6170.23	5330.11	4241.70	3232.68	1441788.64	3411631.94		1.14	0.36	32.00
11234.00	88.86	24.70	6170.42	5361.20	4270.55	3246.52	1441817.49	3411645.78		7.69	2.46	32.00



Survey: Ford Family Trust 2H

Survey Date: 5/18/2012

MD	Inc	Azim	TVD	VS	+N/-S	+E/-W	Northing	Easting	Dogleg	Severity	Dogleg	Course Length
ft	deg	deg	ft	ft	ft	ft	ft	ft		7100ft	deg	ft
11249.00	88.72	24.70	6170.73	5375.72	4284.17	3252.78	1441831.11	3411652.04		0.91	0.14	15.00