

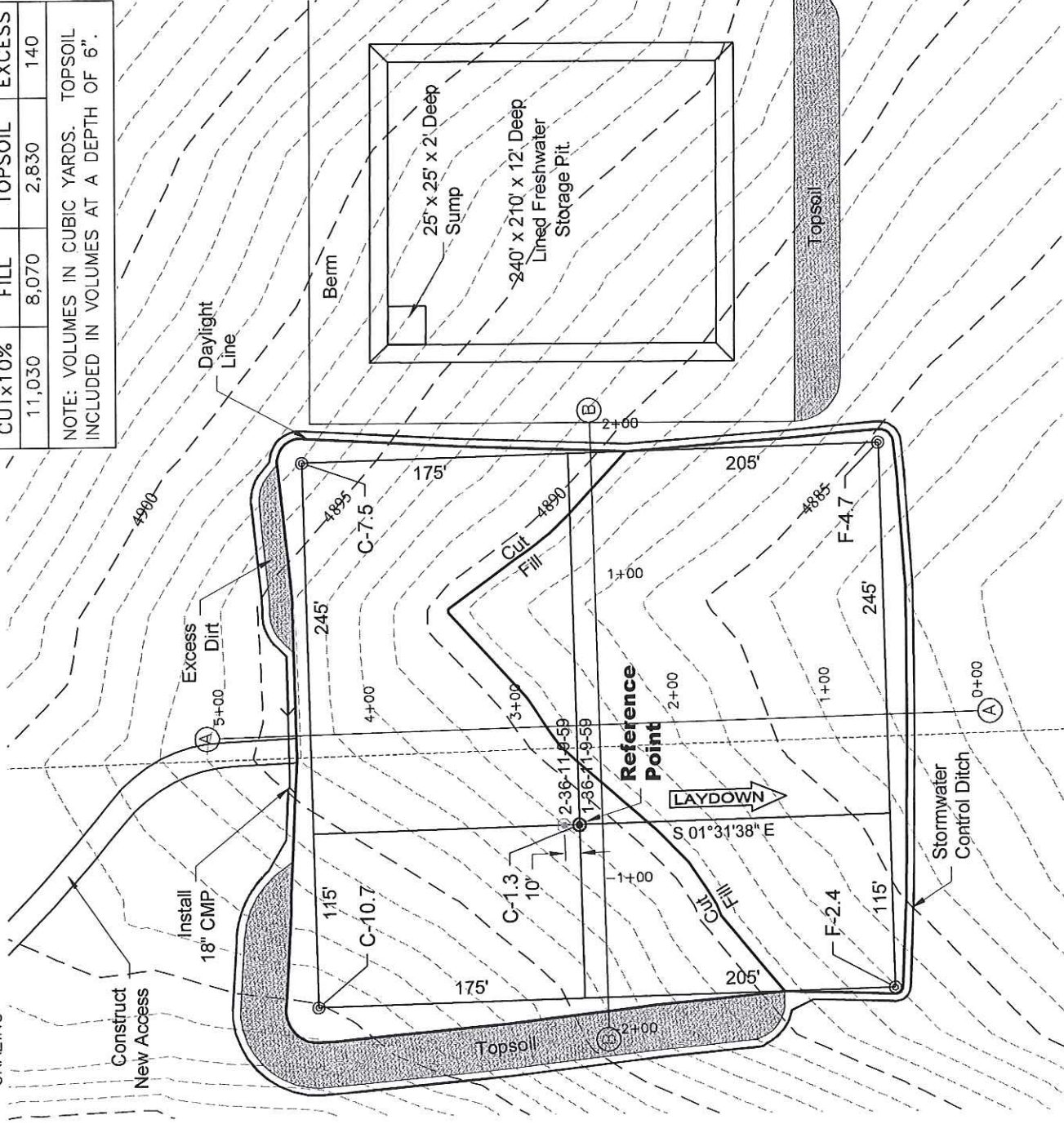
CONSTRUCTION LAYOUT DRAWING

1 of 2

VEGETATION:
DRY LAND PASTURE

SURFACE USE:
GRAZING

PAD 360'X380' ELEV= 4889.4'			
DISTURBED AREA=4.4± ACRES			
ESTIMATED DIRT QUANTITIES			
CUTx10%	FILL	TOPSOIL	EXCESS
11,030	8,070	2,830	140
NOTE: VOLUMES IN CUBIC YARDS. TOPSOIL INCLUDED IN VOLUMES AT A DEPTH OF 6".			



NOTE:
10% ALLOWANCE IS MADE FOR SOIL EXPANSION.

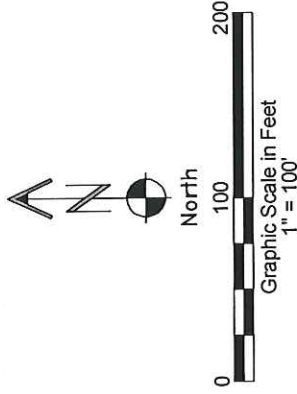
7/16/12



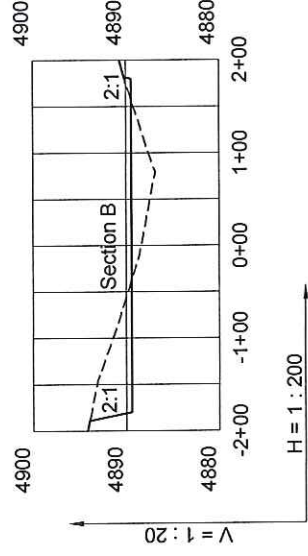
LAND SURVEYING AND MAPPING
LAFAYETTE - WINTER PARK
Ph 303 666 0379 Fx 303 665 6320

CARRIZO OIL & GAS, INC
CASTOR 36-11-9-59 PAD

NW1/4 NW1/4 SEC. 36 T9N R59W
6th PM WELD COUNTY COLORADO



2 of 2



LAND SURVEYING AND MAPPING
LAFAYETTE - WINTER PARK
Ph 303 666 0379 Fx 303 665 6320

DWG: G:\GEOSURV\WeldNorth\Corrzo 110004\Wellplots\Costor 36-11-9-59\Costor 36-11-9-59 F2A R2.dwg USER: Administrator DATE: Jul 16, 2012 12:40pm