

Location:	COLORADO	Slot:	SLOT#29 REIGLE 29N-9HZ (451'FNL & 311'FWL, SEC.4)
Field:	WELD COUNTY (KERR MCGEE)	Well:	REIGLE 29N-9HZ
Facility:	SC04-T2N-R65W	Wellbore:	REIGLE 29N-9HZ PWB

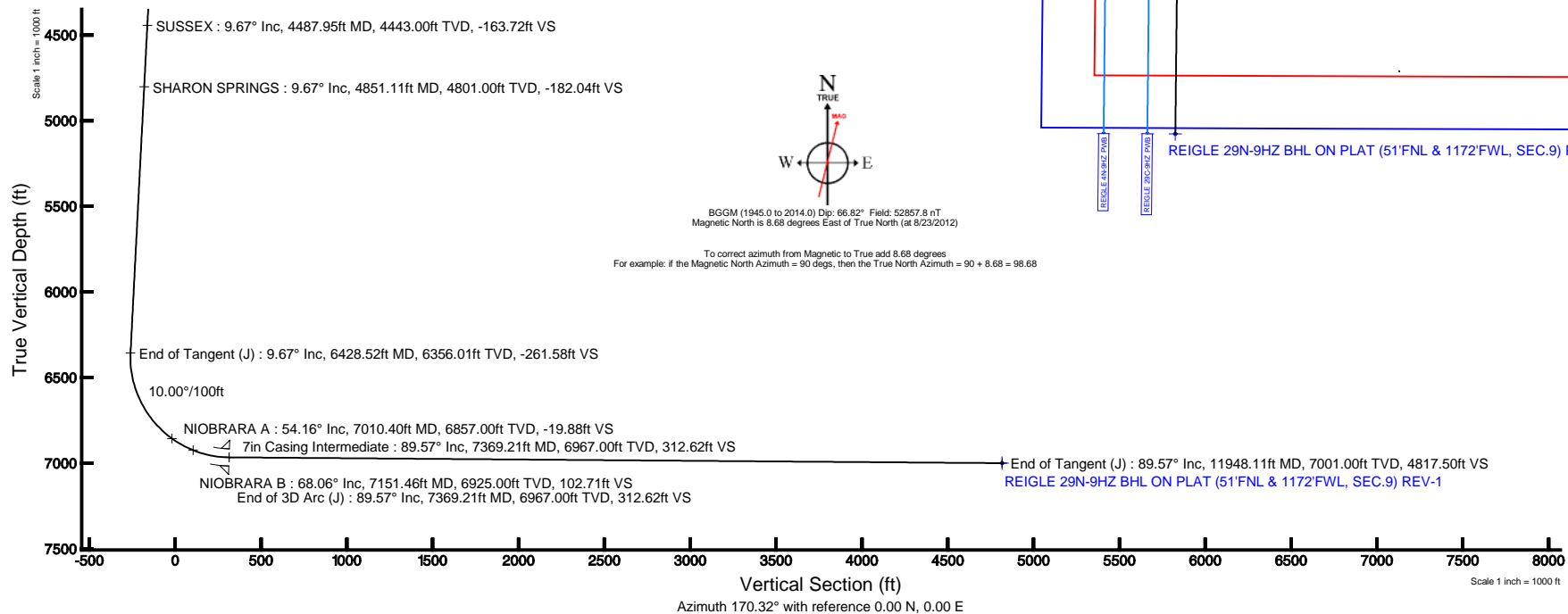
Location:	COLORADO	Slot:	SLOT#29 REIGLE 29N-9HZ (451'FNL & 311'FWL, SEC.4)
Field:	WELD COUNTY (KERR MCGEE)	Well:	REIGLE 29N-9HZ
Facility:	SEC.04-T2N-R65W	Wellbore:	REIGLE 29N-9HZ PWB

True vertical depths are referenced to Rig on SLOT#29 REIGLE 29N-9HZ (451FNL & 311FWL, SEC.4) (RKB)	Grid System: NAD83 / Lambert Colorado SP, Northern Zone (501), US feet
Measured depths are referenced to Rig on SLOT#29 REIGLE 29N-9HZ (451FNL & 311FWL, SEC.4) (RKB)	North Reference: True north
Rig on SLOT#29 REIGLE 29N-9HZ (451FNL & 311FWL, SEC.4) (RKB) to Mean Sea Level: 4886 feet	Scale: True distance
Mean Sea Level to Mud line (At Slot: SLOT#29 REIGLE 29N-9HZ (451FNL & 311FWL, SEC.4): 0 feet)	Depths are in feet
Coordinates are in feet referenced to Slot	Created by: wilsjef02 on 8/23/2012

Facility Name				Grid East (US ft)	Grid North (US ft)	Latitude	Longitude
SEC 04-T2N-R65W				3232187.417	1305339.416	40°1'06.838"N	104°40'08.933"W
Shot	Local N (ft)	Local E (ft)	Grid East (US ft)	Grid North (US ft)	Latitude	Longitude	
SLOT#29 REIGLE 20N-9#Z (451 FNL, & 311 FFWL, SEC.4)	1769.06	-2183.39	3229987.649	1307087.868	40°1'04.319"N	104°40'37.060"W	
Rig on SLOT#29 REIGLE 20N-9#Z (451 FNL, & 311 FFWL, SEC.4) (RKB) to Mud line (At Slot: SLOT#29 REIGLE 20N-9#Z (451 FNL, & 311 FFWL, SEC.4))						4886ft	
Mean Sea Level to Mud line (At Slot: SLOT#29 REIGLE 20N-9#Z (451 FNL, & 311 FFWL, SEC.4))						0ft	
Rig on SLOT#29 REIGLE 20N-9#Z (451 FNL, & 311 FFWL, SEC.4) (RKB) to Mean Sea Level						4886ft	

Design Comment	MD (ft)	Inc (°)	Az (°)	TVD (ft)	Local N (ft)	Local E (ft)	DLS (°/100ft)	VS (ft)
Tie On	17.00	0.000	62.845	17.00	0.00	0.00	0.00	0.00
End of Tangent	1000.00	0.000	62.845	1000.00	0.00	0.00	0.00	0.00
End of Build (J)	1483.35	9.667	62.845	1481.06	18.57	36.20	2.00	-12.22
End of Tangent (J)	6428.52	9.667	62.845	6356.01	397.56	775.07	0.00	-261.58
End of 3D Arc (J)	7369.21	89.575	180.628	6967.00	-170.40	860.23	10.00	312.62
End of Tangent (J)	11948.11	89.575	180.628	7001.00	-4748.91	810.03	0.00	4817.50

Name	MD (ft)	TVD (ft)	Local N (ft)	Local E (ft)	Grid East (US ft)	Grid North (US ft)	Latitude	Longitude
REIGLE 4-4/2 PAD SECTION LINES		0.00	-44.83	-39.67	3229948.40	1307042.68	40°10'23.876"N	104°40'37.571"W
REIGLE 29N-9/2 B/H/L ON PLAT (51FNL & 1172FWL SEC 9) REV-1	11948.11	7001.00	-4748.91	810.03	3230841.68	1302346.89	40°09'37.390"N	104°40'26.627"W
REIGLE 4-4/2 PAD HARDLINES (460' SETBACKS)		7220.00	-44.83	-39.67	3229948.40	1307042.68	40°10'23.876"N	104°40'37.571"W





Planned Wellpath Report

REIGLE 29N-9HZ (PERMIT) PWP

Page 1 of 6

**REFERENCE WELLPATH IDENTIFICATION**

Operator	KERR-MCGEE OIL & GAS ONSHORE LP	Slot	SLOT#29 REIGLE 29N-9HZ (451'FNL & 311'FWL, SEC.4)
Area	COLORADO	Well	REIGLE 29N-9HZ
Field	WELD COUNTY (KERR MCGEE)	Wellbore	REIGLE 29N-9HZ PWB
Facility	SEC.04-T2N-R65W		

REPORT SETUP INFORMATION

Projection System	NAD83 / Lambert Colorado SP, Northern Zone (501), US feet	Software System	WellArchitect® 3.0.2
North Reference	True	User	Wilsje02
Scale	0.999958	Report Generated	8/23/2012 at 21:59:02
Convergence at slot	0.53° East	Database/Source file	WellArchitectDB/REIGLE_29N-9HZ_PWB.xml

WELLPATH LOCATION

	Local coordinates		Grid coordinates		Geographic coordinates	
	North[ft]	East[ft]	Easting[US ft]	Northing[US ft]	Latitude	Longitude
Slot Location	1769.06	-2183.39	3229987.65	1307087.87	40°10'24.319"N	104°40'37.060"W
Facility Reference Pt			3232187.42	1305339.42	40°10'06.838"N	104°40'08.933"W
Field Reference Pt			3197771.84	1268891.29	40°04'09.600"N	104°47'36.000"W

WELLPATH DATUM

Calculation method	Minimum curvature	Rig on SLOT#29 REIGLE 29N-9HZ (451'FNL & 311'FWL, SEC.4) (RKB) to Facility Vertical Datum
Horizontal Reference Pt	Slot	Rig on SLOT#29 REIGLE 29N-9HZ (451'FNL & 311'FWL, SEC.4) (RKB) to Mean Sea Level
Vertical Reference Pt	Rig on SLOT#29 REIGLE 29N-9HZ (451'FNL & 311'FWL, SEC.4) (RKB)	Rig on SLOT#29 REIGLE 29N-9HZ (451'FNL & 311'FWL, SEC.4) (RKB) to Mud Line at Slot (SLOT#29 REIGLE 29N-9HZ (451'
MD Reference Pt	Rig on SLOT#29 REIGLE 29N-9HZ (451'FNL & 311'FWL, SEC.4) (RKB)	Section Origin
Field Vertical Reference	Mean Sea Level	Section Azimuth



Planned Wellpath Report

REIGLE 29N-9HZ (PERMIT) PWP

Page 2 of 6



REFERENCE WELLPATH IDENTIFICATION

Operator	KERR-MCGEE OIL & GAS ONSHORE LP	Slot	SLOT#29 REIGLE 29N-9HZ (451'FNL & 311'FWL, SEC.4)
Area	COLORADO	Well	REIGLE 29N-9HZ
Field	WELD COUNTY (KERR MCGEE)	Wellbore	REIGLE 29N-9HZ PWB
Facility	SEC.04-T2N-R65W		

WELLPATH DATA (131 stations) † = interpolated/extrapolated station

MD [ft]	Inclination [°]	Azimuth [°]	TVD [ft]	Vert Sect [ft]	North [ft]	East [ft]	Latitude	Longitude	DLS [°/100ft]	Comments
0.00†	0.000	62.845	0.00	0.00	0.00	0.00	40°10'24.319"N	104°40'37.060"W	0.00	
17.00	0.000	62.845	17.00	0.00	0.00	0.00	40°10'24.319"N	104°40'37.060"W	0.00	Tie On
117.00†	0.000	62.845	117.00	0.00	0.00	0.00	40°10'24.319"N	104°40'37.060"W	0.00	
217.00†	0.000	62.845	217.00	0.00	0.00	0.00	40°10'24.319"N	104°40'37.060"W	0.00	
317.00†	0.000	62.845	317.00	0.00	0.00	0.00	40°10'24.319"N	104°40'37.060"W	0.00	
417.00†	0.000	62.845	417.00	0.00	0.00	0.00	40°10'24.319"N	104°40'37.060"W	0.00	
517.00†	0.000	62.845	517.00	0.00	0.00	0.00	40°10'24.319"N	104°40'37.060"W	0.00	
617.00†	0.000	62.845	617.00	0.00	0.00	0.00	40°10'24.319"N	104°40'37.060"W	0.00	
717.00†	0.000	62.845	717.00	0.00	0.00	0.00	40°10'24.319"N	104°40'37.060"W	0.00	
817.00†	0.000	62.845	817.00	0.00	0.00	0.00	40°10'24.319"N	104°40'37.060"W	0.00	
917.00†	0.000	62.845	917.00	0.00	0.00	0.00	40°10'24.319"N	104°40'37.060"W	0.00	
1000.00	0.000	62.845	1000.00	0.00	0.00	0.00	40°10'24.319"N	104°40'37.060"W	0.00	End of Tangent
1017.00†	0.340	62.845	1017.00	-0.02	0.02	0.04	40°10'24.319"N	104°40'37.059"W	2.00	
1117.00†	2.340	62.845	1116.97	-0.72	1.09	2.13	40°10'24.330"N	104°40'37.033"W	2.00	
1217.00†	4.340	62.845	1216.79	-2.47	3.75	7.31	40°10'24.356"N	104°40'36.966"W	2.00	
1317.00†	6.340	62.845	1316.35	-5.26	8.00	15.59	40°10'24.398"N	104°40'36.859"W	2.00	
1417.00†	8.340	62.845	1415.53	-9.10	13.83	26.96	40°10'24.456"N	104°40'36.713"W	2.00	
1483.35	9.667	62.845	1481.06	-12.22	18.57	36.20	40°10'24.502"N	104°40'36.594"W	2.00	End of Build (J)
1517.00†	9.667	62.845	1514.23	-13.91	21.14	41.22	40°10'24.528"N	104°40'36.529"W	0.00	
1617.00†	9.667	62.845	1612.81	-18.95	28.81	56.16	40°10'24.604"N	104°40'36.336"W	0.00	
1717.00†	9.667	62.845	1711.39	-24.00	36.47	71.11	40°10'24.679"N	104°40'36.144"W	0.00	
1817.00†	9.667	62.845	1809.97	-29.04	44.14	86.05	40°10'24.755"N	104°40'35.952"W	0.00	
1917.00†	9.667	62.845	1908.55	-34.08	51.80	100.99	40°10'24.831"N	104°40'35.759"W	0.00	
2017.00†	9.667	62.845	2007.13	-39.13	59.46	115.93	40°10'24.907"N	104°40'35.567"W	0.00	
2117.00†	9.667	62.845	2105.71	-44.17	67.13	130.87	40°10'24.982"N	104°40'35.374"W	0.00	
2217.00†	9.667	62.845	2204.29	-49.21	74.79	145.81	40°10'25.058"N	104°40'35.182"W	0.00	
2317.00†	9.667	62.845	2302.87	-54.25	82.46	160.75	40°10'25.134"N	104°40'34.989"W	0.00	
2417.00†	9.667	62.845	2401.45	-59.30	90.12	175.69	40°10'25.210"N	104°40'34.797"W	0.00	
2517.00†	9.667	62.845	2500.03	-64.34	97.78	190.64	40°10'25.285"N	104°40'34.604"W	0.00	
2617.00†	9.667	62.845	2598.61	-69.38	105.45	205.58	40°10'25.361"N	104°40'34.412"W	0.00	
2717.00†	9.667	62.845	2697.19	-74.42	113.11	220.52	40°10'25.437"N	104°40'34.219"W	0.00	
2817.00†	9.667	62.845	2795.77	-79.47	120.78	235.46	40°10'25.512"N	104°40'34.027"W	0.00	
2917.00†	9.667	62.845	2894.35	-84.51	128.44	250.40	40°10'25.588"N	104°40'33.834"W	0.00	
3017.00†	9.667	62.845	2992.93	-89.55	136.10	265.34	40°10'25.664"N	104°40'33.642"W	0.00	
3117.00†	9.667	62.845	3091.51	-94.59	143.77	280.28	40°10'25.740"N	104°40'33.449"W	0.00	
3217.00†	9.667	62.845	3190.09	-99.64	151.43	295.22	40°10'25.815"N	104°40'33.257"W	0.00	
3317.00†	9.667	62.845	3288.67	-104.68	159.10	310.17	40°10'25.891"N	104°40'33.064"W	0.00	
3417.00†	9.667	62.845	3387.25	-109.72	166.76	325.11	40°10'25.967"N	104°40'32.872"W	0.00	
3517.00†	9.667	62.845	3485.83	-114.76	174.42	340.05	40°10'26.043"N	104°40'32.679"W	0.00	
3617.00†	9.667	62.845	3584.41	-119.81	182.09	354.99	40°10'26.118"N	104°40'32.487"W	0.00	
3717.00†	9.667	62.845	3682.99	-124.85	189.75	369.93	40°10'26.194"N	104°40'32.294"W	0.00	
3817.00†	9.667	62.845	3781.57	-129.89	197.42	384.87	40°10'26.270"N	104°40'32.102"W	0.00	
3917.00†	9.667	62.845	3880.15	-134.93	205.08	399.81	40°10'26.346"N	104°40'31.909"W	0.00	
3999.01†	9.667	62.845	3961.00	-139.07	211.36	412.07	40°10'26.408"N	104°40'31.752"W	0.00	PARKMAN
4017.00†	9.667	62.845	3978.73	-139.98	212.74	414.75	40°10'26.421"N	104°40'31.717"W	0.00	



Planned Wellpath Report

REIGLE 29N-9HZ (PERMIT) PWP

Page 3 of 6



REFERENCE WELLPATH IDENTIFICATION

Operator	KERR-MCGEE OIL & GAS ONSHORE LP	Slot	SLOT#29 REIGLE 29N-9HZ (451'FNL & 311'FWL, SEC.4)
Area	COLORADO	Well	REIGLE 29N-9HZ
Field	WELD COUNTY (KERR MCGEE)	Wellbore	REIGLE 29N-9HZ PWB
Facility	SEC.04-T2N-R6SW		

WELLPATH DATA (131 stations) † = interpolated/extrapolated station

MD [ft]	Inclination [°]	Azimuth [°]	TVD [ft]	Vert Sect [ft]	North [ft]	East [ft]	Latitude	Longitude	DLS [°/100ft]	Comments
4117.00†	9.667	62.845	4077.31	-145.02	220.41	429.70	40°10'26.497"N	104°40'31.524"W	0.00	
4217.00†	9.667	62.845	4175.89	-150.06	228.07	444.64	40°10'26.573"N	104°40'31.332"W	0.00	
4317.00†	9.667	62.845	4274.47	-155.10	235.73	459.58	40°10'26.648"N	104°40'31.140"W	0.00	
4417.00†	9.667	62.845	4373.05	-160.15	243.40	474.52	40°10'26.724"N	104°40'30.947"W	0.00	
4487.95†	9.667	62.845	4443.00	-163.72	248.84	485.12	40°10'26.778"N	104°40'30.810"W	0.00	SUSSEX
4517.00†	9.667	62.845	4471.63	-165.19	251.06	489.46	40°10'26.800"N	104°40'30.755"W	0.00	
4617.00†	9.667	62.845	4570.21	-170.23	258.73	504.40	40°10'26.876"N	104°40'30.562"W	0.00	
4717.00†	9.667	62.845	4668.79	-175.27	266.39	519.34	40°10'26.951"N	104°40'30.370"W	0.00	
4817.00†	9.667	62.845	4767.37	-180.32	274.05	534.28	40°10'27.027"N	104°40'30.177"W	0.00	
4851.11†	9.667	62.845	4801.00	-182.04	276.67	539.38	40°10'27.053"N	104°40'30.111"W	0.00	SHARON SPRINGS
4917.00†	9.667	62.845	4865.95	-185.36	281.72	549.23	40°10'27.103"N	104°40'29.985"W	0.00	
5017.00†	9.667	62.845	4964.53	-190.40	289.38	564.17	40°10'27.179"N	104°40'29.792"W	0.00	
5117.00†	9.667	62.845	5063.11	-195.44	297.05	579.11	40°10'27.254"N	104°40'29.600"W	0.00	
5217.00†	9.667	62.845	5161.69	-200.49	304.71	594.05	40°10'27.330"N	104°40'29.407"W	0.00	
5317.00†	9.667	62.845	5260.27	-205.53	312.37	608.99	40°10'27.406"N	104°40'29.215"W	0.00	
5417.00†	9.667	62.845	5358.85	-210.57	320.04	623.93	40°10'27.482"N	104°40'29.022"W	0.00	
5517.00†	9.667	62.845	5457.43	-215.61	327.70	638.87	40°10'27.557"N	104°40'28.830"W	0.00	
5617.00†	9.667	62.845	5556.01	-220.66	335.37	653.81	40°10'27.633"N	104°40'28.637"W	0.00	
5717.00†	9.667	62.845	5654.59	-225.70	343.03	668.76	40°10'27.709"N	104°40'28.445"W	0.00	
5817.00†	9.667	62.845	5753.17	-230.74	350.69	683.70	40°10'27.784"N	104°40'28.252"W	0.00	
5917.00†	9.667	62.845	5851.75	-235.78	358.36	698.64	40°10'27.860"N	104°40'28.060"W	0.00	
6017.00†	9.667	62.845	5950.33	-240.83	366.02	713.58	40°10'27.936"N	104°40'27.867"W	0.00	
6117.00†	9.667	62.845	6048.91	-245.87	373.69	728.52	40°10'28.012"N	104°40'27.675"W	0.00	
6217.00†	9.667	62.845	6147.49	-250.91	381.35	743.46	40°10'28.087"N	104°40'27.482"W	0.00	
6317.00†	9.667	62.845	6246.07	-255.95	389.01	758.40	40°10'28.163"N	104°40'27.290"W	0.00	
6417.00†	9.667	62.845	6344.65	-261.00	396.68	773.34	40°10'28.239"N	104°40'27.097"W	0.00	
6428.52	9.667	62.845	6356.01	-261.58	397.56	775.07	40°10'28.248"N	104°40'27.075"W	0.00	End of Tangent (J)
6517.00†	9.599	117.743	6443.42	-259.32	397.52	788.23	40°10'28.247"N	104°40'26.906"W	10.00	
6617.00†	16.665	150.484	6540.86	-240.72	381.12	802.71	40°10'28.085"N	104°40'26.719"W	10.00	
6717.00†	25.725	162.476	6634.04	-205.64	347.86	816.34	40°10'27.756"N	104°40'26.543"W	10.00	
6817.00†	35.273	168.398	6720.13	-155.16	298.75	828.72	40°10'27.271"N	104°40'26.384"W	10.00	
6917.00†	44.999	172.030	6796.50	-90.80	235.30	839.45	40°10'26.644"N	104°40'26.246"W	10.00	
7010.40†	54.157	174.446	6857.00	-19.88	164.76	847.71	40°10'25.947"N	104°40'26.139"W	10.00	NIOBRARA A
7017.00†	54.806	174.595	6860.84	-14.52	159.41	848.23	40°10'25.894"N	104°40'26.133"W	10.00	
7117.00†	64.656	176.601	6911.18	71.36	73.41	854.77	40°10'25.044"N	104°40'26.049"W	10.00	
7151.46†	68.055	177.213	6925.00	102.71	41.89	856.47	40°10'24.733"N	104°40'26.027"W	10.00	NIOBRARA B
7217.00†	74.528	178.303	6946.01	164.24	-20.11	858.89	40°10'24.120"N	104°40'25.996"W	10.00	
7317.00†	84.412	179.848	6964.27	261.28	-118.28	860.45	40°10'23.150"N	104°40'25.975"W	10.00	
7369.21	89.575	180.628	6967.00	312.62	-170.40	860.23	40°10'22.635"N	104°40'25.978"W	10.00	End of 3D Arc (J)
7417.00†	89.575	180.628	6967.36	359.64	-218.19	859.71	40°10'22.163"N	104°40'25.985"W	0.00	
7517.00†	89.575	180.628	6968.10	458.02	-318.18	858.61	40°10'21.175"N	104°40'25.999"W	0.00	
7617.00†	89.575	180.628	6968.84	556.40	-418.17	857.52	40°10'20.186"N	104°40'26.013"W	0.00	
7717.00†	89.575	180.628	6969.59	654.79	-518.16	856.42	40°10'19.198"N	104°40'26.028"W	0.00	
7817.00†	89.575	180.628	6970.33	753.17	-618.16	855.32	40°10'18.210"N	104°40'26.042"W	0.00	
7917.00†	89.575	180.628	6971.07	851.55	-718.15	854.23	40°10'17.222"N	104°40'26.056"W	0.00	



Planned Wellpath Report

REIGLE 29N-9HZ (PERMIT) PWP

Page 4 of 6



REFERENCE WELLPATH IDENTIFICATION

Operator	KERR-MCGEE OIL & GAS ONSHORE LP	Slot	SLOT#29 REIGLE 29N-9HZ (451'FNL & 311'FWL, SEC.4)
Area	COLORADO	Well	REIGLE 29N-9HZ
Field	WELD COUNTY (KERR MCGEE)	Wellbore	REIGLE 29N-9HZ PWB
Facility	SEC.04-T2N-R65W		

WELLPATH DATA (131 stations) † = interpolated/extrapolated station

MD [ft]	Inclination [°]	Azimuth [°]	TVD [ft]	Vert Sect [ft]	North [ft]	East [ft]	Latitude	Longitude	DLS [°/100ft]	Comments
8017.00†	89.575	180.628	6971.81	949.94	-818.14	853.13	40°10'16.234"N	104°40'26.070"W	0.00	
8117.00†	89.575	180.628	6972.56	1048.32	-918.13	852.03	40°10'15.246"N	104°40'26.084"W	0.00	
8217.00†	89.575	180.628	6973.30	1146.70	-1018.12	850.94	40°10'14.258"N	104°40'26.098"W	0.00	
8317.00†	89.575	180.628	6974.04	1245.09	-1118.11	849.84	40°10'13.270"N	104°40'26.113"W	0.00	
8417.00†	89.575	180.628	6974.78	1343.47	-1218.10	848.74	40°10'12.282"N	104°40'26.127"W	0.00	
8517.00†	89.575	180.628	6975.53	1441.85	-1318.09	847.65	40°10'11.293"N	104°40'26.141"W	0.00	
8617.00†	89.575	180.628	6976.27	1540.24	-1418.08	846.55	40°10'10.305"N	104°40'26.155"W	0.00	
8717.00†	89.575	180.628	6977.01	1638.62	-1518.08	845.45	40°10'09.317"N	104°40'26.169"W	0.00	
8817.00†	89.575	180.628	6977.75	1737.00	-1618.07	844.36	40°10'08.329"N	104°40'26.183"W	0.00	
8917.00†	89.575	180.628	6978.49	1835.39	-1718.06	843.26	40°10'07.341"N	104°40'26.198"W	0.00	
9017.00†	89.575	180.628	6979.24	1933.77	-1818.05	842.17	40°10'06.353"N	104°40'26.212"W	0.00	
9117.00†	89.575	180.628	6979.98	2032.15	-1918.04	841.07	40°10'05.365"N	104°40'26.226"W	0.00	
9217.00†	89.575	180.628	6980.72	2130.54	-2018.03	839.97	40°10'04.377"N	104°40'26.240"W	0.00	
9317.00†	89.575	180.628	6981.46	2228.92	-2118.02	838.88	40°10'03.388"N	104°40'26.254"W	0.00	
9417.00†	89.575	180.628	6982.21	2327.30	-2218.01	837.78	40°10'02.400"N	104°40'26.268"W	0.00	
9517.00†	89.575	180.628	6982.95	2425.69	-2318.01	836.68	40°10'01.412"N	104°40'26.283"W	0.00	
9617.00†	89.575	180.628	6983.69	2524.07	-2418.00	835.59	40°10'00.424"N	104°40'26.297"W	0.00	
9717.00†	89.575	180.628	6984.43	2622.45	-2517.99	834.49	40°09'59.436"N	104°40'26.311"W	0.00	
9817.00†	89.575	180.628	6985.18	2720.84	-2617.98	833.39	40°09'58.448"N	104°40'26.325"W	0.00	
9917.00†	89.575	180.628	6985.92	2819.22	-2717.97	832.30	40°09'57.460"N	104°40'26.339"W	0.00	
10017.00†	89.575	180.628	6986.66	2917.60	-2817.96	831.20	40°09'56.472"N	104°40'26.353"W	0.00	
10117.00†	89.575	180.628	6987.40	3015.99	-2917.95	830.10	40°09'55.484"N	104°40'26.368"W	0.00	
10217.00†	89.575	180.628	6988.15	3114.37	-3017.94	829.01	40°09'54.495"N	104°40'26.382"W	0.00	
10317.00†	89.575	180.628	6988.89	3212.75	-3117.94	827.91	40°09'53.507"N	104°40'26.396"W	0.00	
10417.00†	89.575	180.628	6989.63	3311.14	-3217.93	826.82	40°09'52.519"N	104°40'26.410"W	0.00	
10517.00†	89.575	180.628	6990.37	3409.52	-3317.92	825.72	40°09'51.531"N	104°40'26.424"W	0.00	
10617.00†	89.575	180.628	6991.12	3507.90	-3417.91	824.62	40°09'50.543"N	104°40'26.438"W	0.00	
10717.00†	89.575	180.628	6991.86	3606.29	-3517.90	823.53	40°09'49.555"N	104°40'26.453"W	0.00	
10817.00†	89.575	180.628	6992.60	3704.67	-3617.89	822.43	40°09'48.567"N	104°40'26.467"W	0.00	
10917.00†	89.575	180.628	6993.34	3803.05	-3717.88	821.33	40°09'47.579"N	104°40'26.481"W	0.00	
11017.00†	89.575	180.628	6994.09	3901.43	-3817.87	820.24	40°09'46.591"N	104°40'26.495"W	0.00	
11117.00†	89.575	180.628	6994.83	3999.82	-3917.87	819.14	40°09'45.602"N	104°40'26.509"W	0.00	
11217.00†	89.575	180.628	6995.57	4098.20	-4017.86	818.04	40°09'44.614"N	104°40'26.523"W	0.00	
11317.00†	89.575	180.628	6996.31	4196.58	-4117.85	816.95	40°09'43.626"N	104°40'26.538"W	0.00	
11417.00†	89.575	180.628	6997.06	4294.97	-4217.84	815.85	40°09'42.638"N	104°40'26.552"W	0.00	
11517.00†	89.575	180.628	6997.80	4393.35	-4317.83	814.75	40°09'41.650"N	104°40'26.566"W	0.00	
11617.00†	89.575	180.628	6998.54	4491.73	-4417.82	813.66	40°09'40.662"N	104°40'26.580"W	0.00	
11717.00†	89.575	180.628	6999.28	4590.12	-4517.81	812.56	40°09'39.674"N	104°40'26.594"W	0.00	
11817.00†	89.575	180.628	7000.03	4688.50	-4617.80	811.46	40°09'38.686"N	104°40'26.608"W	0.00	
11917.00†	89.575	180.628	7000.77	4786.88	-4717.80	810.37	40°09'37.697"N	104°40'26.623"W	0.00	
11948.11	89.575	180.628	7001.00 [†]	4817.50	-4748.91	810.03	40°09'37.390"N	104°40'26.627"W	0.00	End of Tangent (J)



Planned Wellpath Report

REIGLE 29N-9HZ (PERMIT) PWP

Page 5 of 6

**REFERENCE WELLPATH IDENTIFICATION**

Operator	KERR-MCGEE OIL & GAS ONSHORE LP	Slot	SLOT#29 REIGLE 29N-9HZ (451'FNL & 311'FWL, SEC.4)
Area	COLORADO	Well	REIGLE 29N-9HZ
Field	WELD COUNTY (KERR MCGEE)	Wellbore	REIGLE 29N-9HZ PWB
Facility	SEC.04-T2N-R65W		

HOLE & CASING SECTIONS - Ref Wellbore: REIGLE 29N-9HZ PWB Ref Wellpath: REIGLE 29N-9HZ (PERMIT) PWP

String/Diameter	Start MD [ft]	End MD [ft]	Interval [ft]	Start TVD [ft]	End TVD [ft]	Start N/S [ft]	Start E/W [ft]	End N/S [ft]	End E/W [ft]
13.5in Open Hole	17.00	856.00	839.00	17.00	856.00	0.00	0.00	0.00	0.00
9.625in Casing Surface	17.00	856.00	839.00	17.00	856.00	0.00	0.00	0.00	0.00
8.75in Open Hole	856.00	7369.21	6513.21	856.00	6967.00	0.00	0.00	-170.40	860.23
7in Casing Intermediate	17.00	7369.21	7352.21	17.00	6967.00	0.00	0.00	-170.40	860.23
6.125in Open Hole	7369.21	11948.11	4578.90	6967.00	7001.00	-170.40	860.23	-4748.91	810.03
4.5in Open Hole	17.00	11948.11	11931.11	17.00	7001.00	0.00	0.00	-4748.91	810.03

TARGETS

Name	MD [ft]	TVD [ft]	North [ft]	East [ft]	Grid East [US ft]	Grid North [US ft]	Latitude	Longitude	Shape
REIGLE 4-4HZ PAD SECTION LINES		0.00	-44.83	-39.67	3229948.40	1307042.68	40°10'23.876"N	104°40'37.571"W	polygon
1) REIGLE 29N-9HZ BHL ON PLAT (51'FNL & 1172'FWL, SEC.9) REV-1	11948.11	7001.00	-4748.91	810.03	3230841.68	1302346.89	40°09'37.390"N	104°40'26.627"W	point
REIGLE 4-4HZ PAD HARDLINES (460' SETBACKS)		7220.00	-44.83	-39.67	3229948.40	1307042.68	40°10'23.876"N	104°40'37.571"W	polygon

SURVEY PROGRAM - Ref Wellbore: REIGLE 29N-9HZ PWB Ref Wellpath: REIGLE 29N-9HZ (PERMIT) PWP

Start MD [ft]	End MD [ft]	Positional Uncertainty Model	Log Name/Comment	Wellbore
17.00	7369.21	NaviTrak (Standard)		REIGLE 29N-9HZ PWB
7369.21	11948.11	OnTrak (Standard)		REIGLE 29N-9HZ PWB



Planned Wellpath Report
REIGLE 29N-9HZ (PERMIT) PWP
Page 6 of 6



REFERENCE WELLPATH IDENTIFICATION			
Operator	KERR-MCGEE OIL & GAS ONSHORE LP	Slot	SLOT#29 REIGLE 29N-9HZ (451'FNL & 311'FWL, SEC.4)
Area	COLORADO	Well	REIGLE 29N-9HZ
Field	WELD COUNTY (KERR MCGEE)	Wellbore	REIGLE 29N-9HZ PWB
Facility	SEC.04-T2N-R65W		

WELLPATH COMMENTS				
MD [ft]	Inclination [°]	Azimuth [°]	TVD [ft]	Comment
3999.01	9.667	62.845	3961.00	PARKMAN
4487.95	9.667	62.845	4443.00	SUSSEX
4851.11	9.667	62.845	4801.00	SHARON SPRINGS
7010.40	54.157	174.446	6857.00	NIOBRARA A
7151.46	68.055	177.213	6925.00	NIOBRARA B