

# KERR-MCGEE OIL & GAS ONSHORE LP

Location: COLORADO Slot: SLOT#28 REIGLE 29C-9HZ (473'FNL & 291'FWL, SEC.4)  
Field: WELD COUNTY (KERR MCGEE) Well: REIGLE 29C-9HZ  
Facility: SEC.04-T2N-R65W Wellbore: REIGLE 29C-9HZ PWB

Plot reference wellpath is REIGLE 29C-9HZ (PERMIT) PWP

True vertical depths are referenced to Rig on SLOT#28 REIGLE 29C-9HZ (473'FNL & 291'FWL, SEC.4) (RKB)	Grid System: NAD83 / Lambert Colorado SP, Northern Zone (501), US feet
Measured depths are referenced to Rig on SLOT#28 REIGLE 29C-9HZ (473'FNL & 291'FWL, SEC.4) (RKB)	North Reference: True north
Rig on SLOT#28 REIGLE 29C-9HZ (473'FNL & 291'FWL, SEC.4) (RKB) to Mean Sea Level: 4886 feet	Scale: True distance
Mean Sea Level to Mud line (At Slot: SLOT#28 REIGLE 29C-9HZ (473'FNL & 291'FWL, SEC.4)): 0 feet	Depths are in feet
Coordinates are in feet referenced to Slot	Created by: wellj02 on 8/23/2012

## Location Information

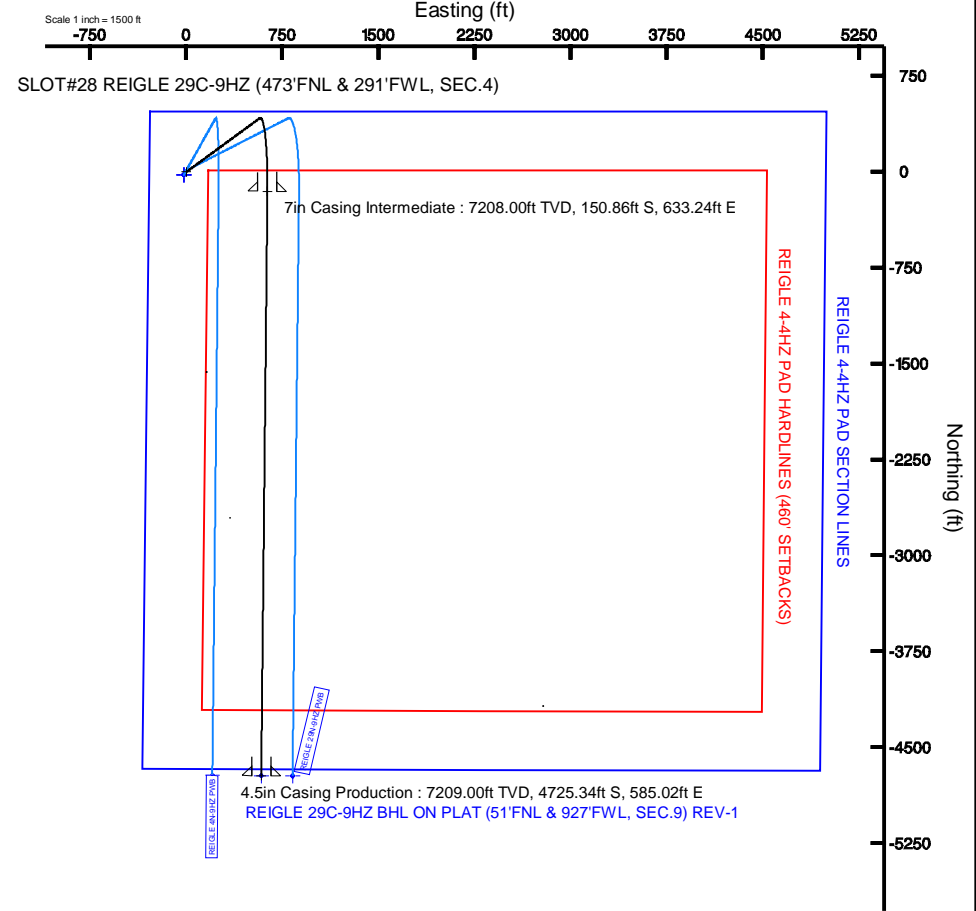
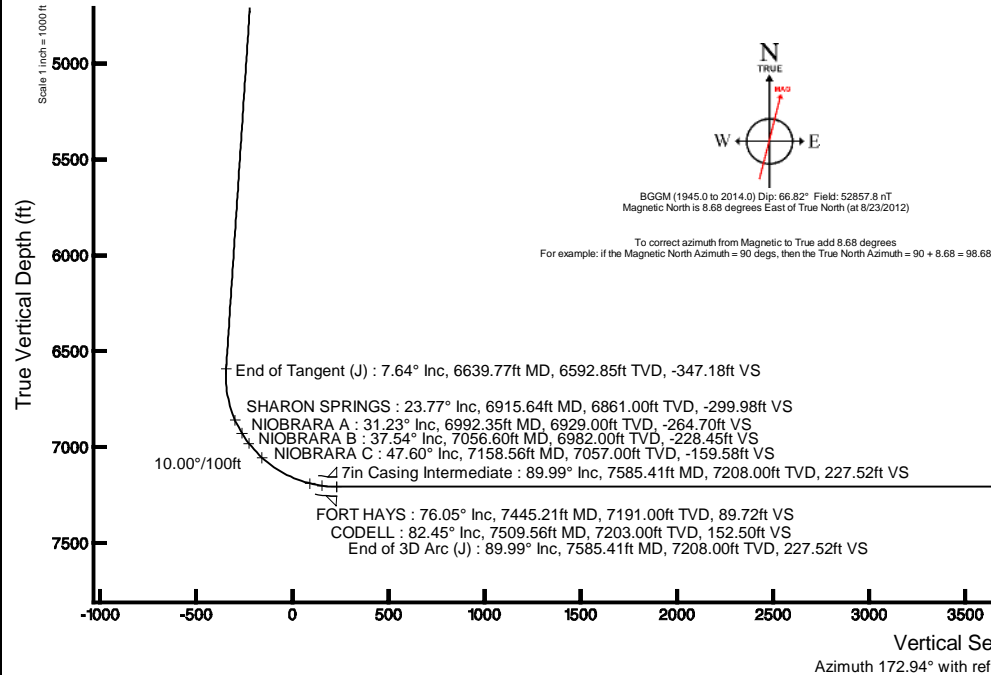
Facility Name		Grid East (US ft)		Latitude		Longitude	
SEC.04-T2N-R65W		3230187.417		40°10'06.838"N		104°40'08.933"W	
Slot		Local N (ft)		Local E (ft)		Grid East (US ft)	
SLOT#28 REIGLE 29C-9HZ (473'FNL & 291'FWL, SEC.4)		1746.50		-2203.18		3229968.065	
Rig on SLOT#28 REIGLE 29C-9HZ (473'FNL & 291'FWL, SEC.4) (RKB) to Mud line (At Slot: SLOT#28 REIGLE 29C-9HZ (473'FNL & 291'FWL, SEC.4))						4886ft	
Mean Sea Level to Mud line (At Slot: SLOT#28 REIGLE 29C-9HZ (473'FNL & 291'FWL, SEC.4))						0ft	
Rig on SLOT#28 REIGLE 29C-9HZ (473'FNL & 291'FWL, SEC.4) (RKB) to Mean Sea Level						4886ft	

## Well Profile Data

Design Comment	MD (ft)	Inc (°)	Az (°)	TVD (ft)	Local N (ft)	Local E (ft)	DLS (°/100ft)	VS (ft)
Tie On	17.00	0.000	53.720	17.00	0.00	0.00	0.00	0.00
End of Tangent	1100.00	0.000	53.720	1100.00	0.00	0.00	0.00	0.00
End of Build (J)	1482.00	7.640	53.720	1480.87	15.05	20.50	2.00	-12.42
End of Tangent (J)	6639.77	7.640	53.720	6592.85	420.81	573.28	0.00	-347.18
End of 3D Arc (J)	7585.41	89.987	180.604	7208.00	-150.86	633.24	10.00	227.52
End of Tangent (J)	12160.14	89.987	180.604	7209.00	-4725.34	585.02	0.00	4761.41

## Targets

Name	MD (ft)	TVD (ft)	Local N (ft)	Local E (ft)	Grid East (US ft)	Grid North (US ft)	Latitude	Longitude
REIGLE 4-4HZ PAD SECTION LINES		0.00	-22.26	-19.87	3229948.40	1307042.68	40°10'23.876"N	104°40'37.571"W
REIGLE 29C-9HZ BHL ON PLAT (51'FNL & 927'FWL, SEC.9) REV-1	12160.14	7209.00	-4725.34	585.02	3230096.89	1302345.63	40°09'37.400"N	104°40'29.780"W
REIGLE 4-4HZ PAD HARDLINES (460' SETBACKS)		7220.00	-22.26	-19.87	3229948.40	1307042.68	40°10'23.876"N	104°40'37.571"W





# Planned Wellpath Report

REIGLE 29C-9HZ (PERMIT) PWP

Page 1 of 6



## REFERENCE WELLPATH IDENTIFICATION

Operator	KERR-MCGEE OIL & GAS ONSHORE LP	Slot	SLOT#28 REIGLE 29C-9HZ (473'FNL & 291'FWL, SEC.4)
Area	COLORADO	Well	REIGLE 29C-9HZ
Field	WELD COUNTY (KERR MCGEE)	Wellbore	REIGLE 29C-9HZ PWB
Facility	SEC.04-T2N-R65W		

## REPORT SETUP INFORMATION

Projection System	NAD83 / Lambert Colorado SP, Northern Zone (501), US feet	Software System	WellArchitect® 3.0.2
North Reference	True	User	Wilsjef02
Scale	0.999958	Report Generated	8/23/2012 at 21:50:54
Convergence at slot	0.53° East	Database/Source file	WellArchitectDB/REIGLE_29C-9HZ_PWB.xml

## WELLPATH LOCATION

	Local coordinates		Grid coordinates		Geographic coordinates	
	North[ft]	East[ft]	Easting[US ft]	Northing[US ft]	Latitude	Longitude
Slot Location	1746.50	-2203.18	3229968.07	1307065.12	40°10'24.096"N	104°40'37.315"W
Facility Reference Pt			3232187.42	1305339.42	40°10'06.838"N	104°40'08.933"W
Field Reference Pt			3197771.84	1268891.29	40°04'09.600"N	104°47'36.000"W

## WELLPATH DATUM

Calculation method	Minimum curvature	Rig on SLOT#28 REIGLE 29C-9HZ (473'FNL & 291'FWL, SEC.4) (RKB) to Facility Vertical Datum
Horizontal Reference Pt	Slot	Rig on SLOT#28 REIGLE 29C-9HZ (473'FNL & 291'FWL, SEC.4) (RKB) to Mean Sea Level
Vertical Reference Pt	Rig on SLOT#28 REIGLE 29C-9HZ (473'FNL & 291'FWL, SEC.4) (RKB)	Rig on SLOT#28 REIGLE 29C-9HZ (473'FNL & 291'FWL, SEC.4) (RKB) to Mud Line at Slot (SLOT#28 REIGLE 29C-9HZ (473'
MD Reference Pt	Rig on SLOT#28 REIGLE 29C-9HZ (473'FNL & 291'FWL, SEC.4) (RKB)	Section Origin
Field Vertical Reference	Mean Sea Level	Section Azimuth



# Planned Wellpath Report

REIGLE 29C-9HZ (PERMIT) PWP

Page 2 of 6



## REFERENCE WELLPATH IDENTIFICATION

Operator	KERR-MCGEE OIL & GAS ONSHORE LP	Slot	SLOT#28 REIGLE 29C-9HZ (473'FNL & 291'FWL, SEC.4)
Area	COLORADO	Well	REIGLE 29C-9HZ
Field	WELD COUNTY (KERR MCGEE)	Wellbore	REIGLE 29C-9HZ PWB
Facility	SEC.04-T2N-R6SW		

## WELLPATH DATA (136 stations) † = interpolated/extrapolated station

MD [ft]	Inclination [°]	Azimuth [°]	TVD [ft]	Vert Sect [ft]	North [ft]	East [ft]	Latitude	Longitude	DLS [°/100ft]	Comments
0.00†	0.000	53.720	0.00	0.00	0.00	0.00	40°10'24.096"N	104°40'37.315"W	0.00	
17.00	0.000	53.720	17.00	0.00	0.00	0.00	40°10'24.096"N	104°40'37.315"W	0.00	Tie On
117.00†	0.000	53.720	117.00	0.00	0.00	0.00	40°10'24.096"N	104°40'37.315"W	0.00	
217.00†	0.000	53.720	217.00	0.00	0.00	0.00	40°10'24.096"N	104°40'37.315"W	0.00	
317.00†	0.000	53.720	317.00	0.00	0.00	0.00	40°10'24.096"N	104°40'37.315"W	0.00	
417.00†	0.000	53.720	417.00	0.00	0.00	0.00	40°10'24.096"N	104°40'37.315"W	0.00	
517.00†	0.000	53.720	517.00	0.00	0.00	0.00	40°10'24.096"N	104°40'37.315"W	0.00	
617.00†	0.000	53.720	617.00	0.00	0.00	0.00	40°10'24.096"N	104°40'37.315"W	0.00	
717.00†	0.000	53.720	717.00	0.00	0.00	0.00	40°10'24.096"N	104°40'37.315"W	0.00	
817.00†	0.000	53.720	817.00	0.00	0.00	0.00	40°10'24.096"N	104°40'37.315"W	0.00	
917.00†	0.000	53.720	917.00	0.00	0.00	0.00	40°10'24.096"N	104°40'37.315"W	0.00	
1017.00†	0.000	53.720	1017.00	0.00	0.00	0.00	40°10'24.096"N	104°40'37.315"W	0.00	
1100.00	0.000	53.720	1100.00	0.00	0.00	0.00	40°10'24.096"N	104°40'37.315"W	0.00	End of Tangent
1117.00†	0.340	53.720	1117.00	-0.02	0.03	0.04	40°10'24.096"N	104°40'37.314"W	2.00	
1217.00†	2.340	53.720	1216.97	-1.17	1.41	1.93	40°10'24.110"N	104°40'37.290"W	2.00	
1317.00†	4.340	53.720	1316.79	-4.01	4.86	6.62	40°10'24.144"N	104°40'37.230"W	2.00	
1417.00†	6.340	53.720	1416.35	-8.55	10.37	14.12	40°10'24.198"N	104°40'37.133"W	2.00	
1482.00	7.640	53.720	1480.87	-12.42	15.05	20.50	40°10'24.245"N	104°40'37.051"W	2.00	End of Build (J)
1517.00†	7.640	53.720	1515.56	-14.69	17.80	24.25	40°10'24.272"N	104°40'37.003"W	0.00	
1617.00†	7.640	53.720	1614.67	-21.18	25.67	34.97	40°10'24.350"N	104°40'36.865"W	0.00	
1717.00†	7.640	53.720	1713.78	-27.67	33.54	45.69	40°10'24.427"N	104°40'36.726"W	0.00	
1817.00†	7.640	53.720	1812.90	-34.16	41.40	56.40	40°10'24.505"N	104°40'36.588"W	0.00	
1917.00†	7.640	53.720	1912.01	-40.65	49.27	67.12	40°10'24.583"N	104°40'36.450"W	0.00	
2017.00†	7.640	53.720	2011.12	-47.14	57.14	77.84	40°10'24.661"N	104°40'36.312"W	0.00	
2117.00†	7.640	53.720	2110.23	-53.63	65.00	88.56	40°10'24.738"N	104°40'36.174"W	0.00	
2217.00†	7.640	53.720	2209.34	-60.12	72.87	99.27	40°10'24.816"N	104°40'36.036"W	0.00	
2317.00†	7.640	53.720	2308.46	-66.61	80.74	109.99	40°10'24.894"N	104°40'35.898"W	0.00	
2417.00†	7.640	53.720	2407.57	-73.10	88.60	120.71	40°10'24.972"N	104°40'35.760"W	0.00	
2517.00†	7.640	53.720	2506.68	-79.59	96.47	131.43	40°10'25.049"N	104°40'35.622"W	0.00	
2617.00†	7.640	53.720	2605.79	-86.08	104.34	142.14	40°10'25.127"N	104°40'35.484"W	0.00	
2717.00†	7.640	53.720	2704.91	-92.57	112.21	152.86	40°10'25.205"N	104°40'35.346"W	0.00	
2817.00†	7.640	53.720	2804.02	-99.06	120.07	163.58	40°10'25.283"N	104°40'35.208"W	0.00	
2917.00†	7.640	53.720	2903.13	-105.55	127.94	174.30	40°10'25.360"N	104°40'35.070"W	0.00	
3017.00†	7.640	53.720	3002.24	-112.05	135.81	185.01	40°10'25.438"N	104°40'34.932"W	0.00	
3117.00†	7.640	53.720	3101.36	-118.54	143.67	195.73	40°10'25.516"N	104°40'34.794"W	0.00	
3217.00†	7.640	53.720	3200.47	-125.03	151.54	206.45	40°10'25.594"N	104°40'34.655"W	0.00	
3317.00†	7.640	53.720	3299.58	-131.52	159.41	217.17	40°10'25.671"N	104°40'34.517"W	0.00	
3417.00†	7.640	53.720	3398.69	-138.01	167.27	227.88	40°10'25.749"N	104°40'34.379"W	0.00	
3517.00†	7.640	53.720	3497.80	-144.50	175.14	238.60	40°10'25.827"N	104°40'34.241"W	0.00	
3617.00†	7.640	53.720	3596.92	-150.99	183.01	249.32	40°10'25.904"N	104°40'34.103"W	0.00	
3717.00†	7.640	53.720	3696.03	-157.48	190.88	260.04	40°10'25.982"N	104°40'33.965"W	0.00	
3817.00†	7.640	53.720	3795.14	-163.97	198.74	270.75	40°10'26.060"N	104°40'33.827"W	0.00	
3917.00†	7.640	53.720	3894.25	-170.46	206.61	281.47	40°10'26.138"N	104°40'33.689"W	0.00	
3988.38†	7.640	53.720	3965.00	-175.09	212.22	289.12	40°10'26.193"N	104°40'33.590"W	0.00	PARKMAN
4017.00†	7.640	53.720	3993.37	-176.95	214.48	292.19	40°10'26.215"N	104°40'33.551"W	0.00	



# Planned Wellpath Report

REIGLE 29C-9HZ (PERMIT) PWP

Page 3 of 6



## REFERENCE WELLPATH IDENTIFICATION

Operator	KERR-MCGEE OIL & GAS ONSHORE LP	Slot	SLOT#28 REIGLE 29C-9HZ (473'FNL & 291'FWL, SEC.4)
Area	COLORADO	Well	REIGLE 29C-9HZ
Field	WELD COUNTY (KERR MCGEE)	Wellbore	REIGLE 29C-9HZ PWB
Facility	SEC.04-T2N-R6SW		

## WELLPATH DATA (136 stations) † = interpolated/extrapolated station

MD [ft]	Inclination [°]	Azimuth [°]	TVD [ft]	Vert Sect [ft]	North [ft]	East [ft]	Latitude	Longitude	DLS [°/100ft]	Comments
4117.00†	7.640	53.720	4092.48	-183.44	222.34	302.90	40°10'26.293"N	104°40'33.413"W	0.00	
4217.00†	7.640	53.720	4191.59	-189.93	230.21	313.62	40°10'26.371"N	104°40'33.275"W	0.00	
4317.00†	7.640	53.720	4290.70	-196.42	238.08	324.34	40°10'26.449"N	104°40'33.137"W	0.00	
4417.00†	7.640	53.720	4389.81	-202.91	245.94	335.06	40°10'26.526"N	104°40'32.999"W	0.00	
4474.70†	7.640	53.720	4447.00	-206.66	250.48	341.24	40°10'26.571"N	104°40'32.919"W	0.00	SUSSEX
4517.00†	7.640	53.720	4488.93	-209.40	253.81	345.77	40°10'26.604"N	104°40'32.861"W	0.00	
4617.00†	7.640	53.720	4588.04	-215.89	261.68	356.49	40°10'26.682"N	104°40'32.723"W	0.00	
4717.00†	7.640	53.720	4687.15	-222.38	269.54	367.21	40°10'26.760"N	104°40'32.584"W	0.00	
4817.00†	7.640	53.720	4786.26	-228.87	277.41	377.93	40°10'26.837"N	104°40'32.446"W	0.00	
4917.00†	7.640	53.720	4885.38	-235.37	285.28	388.64	40°10'26.915"N	104°40'32.308"W	0.00	
5017.00†	7.640	53.720	4984.49	-241.86	293.15	399.36	40°10'26.993"N	104°40'32.170"W	0.00	
5117.00†	7.640	53.720	5083.60	-248.35	301.01	410.08	40°10'27.071"N	104°40'32.032"W	0.00	
5217.00†	7.640	53.720	5182.71	-254.84	308.88	420.80	40°10'27.148"N	104°40'31.894"W	0.00	
5317.00†	7.640	53.720	5281.83	-261.33	316.75	431.51	40°10'27.226"N	104°40'31.756"W	0.00	
5417.00†	7.640	53.720	5380.94	-267.82	324.61	442.23	40°10'27.304"N	104°40'31.618"W	0.00	
5517.00†	7.640	53.720	5480.05	-274.31	332.48	452.95	40°10'27.382"N	104°40'31.480"W	0.00	
5617.00†	7.640	53.720	5579.16	-280.80	340.35	463.67	40°10'27.459"N	104°40'31.342"W	0.00	
5717.00†	7.640	53.720	5678.27	-287.29	348.21	474.38	40°10'27.537"N	104°40'31.204"W	0.00	
5817.00†	7.640	53.720	5777.39	-293.78	356.08	485.10	40°10'27.615"N	104°40'31.066"W	0.00	
5917.00†	7.640	53.720	5876.50	-300.27	363.95	495.82	40°10'27.693"N	104°40'30.928"W	0.00	
6017.00†	7.640	53.720	5975.61	-306.76	371.82	506.54	40°10'27.770"N	104°40'30.790"W	0.00	
6117.00†	7.640	53.720	6074.72	-313.25	379.68	517.25	40°10'27.848"N	104°40'30.651"W	0.00	
6217.00†	7.640	53.720	6173.84	-319.74	387.55	527.97	40°10'27.926"N	104°40'30.513"W	0.00	
6317.00†	7.640	53.720	6272.95	-326.23	395.42	538.69	40°10'28.003"N	104°40'30.375"W	0.00	
6417.00†	7.640	53.720	6372.06	-332.72	403.28	549.41	40°10'28.081"N	104°40'30.237"W	0.00	
6517.00†	7.640	53.720	6471.17	-339.21	411.15	560.12	40°10'28.159"N	104°40'30.099"W	0.00	
6617.00†	7.640	53.720	6570.29	-345.70	419.02	570.84	40°10'28.237"N	104°40'29.961"W	0.00	
6639.77	7.640	53.720	6592.85	-347.18	420.81	573.28	40°10'28.254"N	104°40'29.930"W	0.00	End of Tangent (J)
6717.00†	6.882	117.865	6669.58	-347.04	421.69	581.52	40°10'28.263"N	104°40'29.824"W	10.00	
6817.00†	14.480	156.056	6767.88	-331.61	407.42	591.92	40°10'28.122"N	104°40'29.690"W	10.00	
6915.64†	23.768	166.505	6861.00	-299.98	376.75	601.59	40°10'27.819"N	104°40'29.565"W	10.00	SHARON SPRINGS
6917.00†	23.899	166.594	6862.24	-299.43	376.21	601.71	40°10'27.814"N	104°40'29.563"W	10.00	
6992.35†	31.228	170.412	6929.00	-264.70	342.06	608.52	40°10'27.476"N	104°40'29.476"W	10.00	NIOBRARA A
7017.00†	33.643	171.328	6949.80	-251.49	329.00	610.61	40°10'27.347"N	104°40'29.449"W	10.00	
7056.60†	37.536	172.578	6982.00	-228.45	306.19	613.82	40°10'27.122"N	104°40'29.407"W	10.00	NIOBRARA B
7117.00†	43.494	174.112	7027.90	-189.23	267.23	618.34	40°10'26.737"N	104°40'29.349"W	10.00	
7158.56†	47.603	174.984	7057.00	-159.58	237.70	621.15	40°10'26.445"N	104°40'29.313"W	10.00	NIOBRARA C
7217.00†	53.391	176.034	7094.16	-114.56	192.77	624.66	40°10'26.001"N	104°40'29.268"W	10.00	
7317.00†	63.311	177.514	7146.57	-29.73	107.88	629.39	40°10'25.162"N	104°40'29.207"W	10.00	
7417.00†	73.245	178.754	7183.53	62.66	15.15	632.37	40°10'24.246"N	104°40'29.169"W	10.00	
7445.21†	76.049	179.078	7191.00	89.72	-12.05	632.89	40°10'23.977"N	104°40'29.162"W	10.00	FORT HAYS
7509.56†	82.446	179.790	7203.00	152.50	-75.23	633.51	40°10'23.352"N	104°40'29.154"W	10.00	CODELL
7517.00†	83.185	179.871	7203.93	159.82	-82.61	633.53	40°10'23.280"N	104°40'29.154"W	10.00	
7585.41	89.987	180.604	7208.00	227.52	-150.86	633.24	40°10'22.605"N	104°40'29.157"W	10.00	End of 3D Arc (J)
7617.00†	89.987	180.604	7208.01	258.83	-182.45	632.91	40°10'22.293"N	104°40'29.162"W	0.00	



# Planned Wellpath Report

REIGLE 29C-9HZ (PERMIT) PWP

Page 4 of 6



## REFERENCE WELLPATH IDENTIFICATION

Operator	KERR-MCGEE OIL & GAS ONSHORE LP	Slot	SLOT#28 REIGLE 29C-9HZ (473'FNL & 291'FWL, SEC.4)
Area	COLORADO	Well	REIGLE 29C-9HZ
Field	WELD COUNTY (KERR MCGEE)	Wellbore	REIGLE 29C-9HZ PWB
Facility	SEC.04-T2N-R65W		

## WELLPATH DATA (136 stations) † = interpolated/extrapolated station

MD [ft]	Inclination [°]	Azimuth [°]	TVD [ft]	Vert Sect [ft]	North [ft]	East [ft]	Latitude	Longitude	DLS [°/100ft]	Comments
7717.00†	89.987	180.604	7208.03	357.94	-282.44	631.86	40°10'21.305"N	104°40'29.175"W	0.00	
7817.00†	89.987	180.604	7208.05	457.04	-382.44	630.80	40°10'20.317"N	104°40'29.189"W	0.00	
7917.00†	89.987	180.604	7208.07	556.15	-482.43	629.75	40°10'19.329"N	104°40'29.203"W	0.00	
8017.00†	89.987	180.604	7208.10	655.26	-582.42	628.70	40°10'18.340"N	104°40'29.216"W	0.00	
8117.00†	89.987	180.604	7208.12	754.36	-682.42	627.64	40°10'17.352"N	104°40'29.230"W	0.00	
8217.00†	89.987	180.604	7208.14	853.47	-782.41	626.59	40°10'16.364"N	104°40'29.243"W	0.00	
8317.00†	89.987	180.604	7208.16	952.58	-882.41	625.53	40°10'15.376"N	104°40'29.257"W	0.00	
8417.00†	89.987	180.604	7208.18	1051.69	-982.40	624.48	40°10'14.388"N	104°40'29.271"W	0.00	
8517.00†	89.987	180.604	7208.20	1150.79	-1082.40	623.42	40°10'13.400"N	104°40'29.284"W	0.00	
8617.00†	89.987	180.604	7208.23	1249.90	-1182.39	622.37	40°10'12.412"N	104°40'29.298"W	0.00	
8717.00†	89.987	180.604	7208.25	1349.01	-1282.39	621.32	40°10'11.423"N	104°40'29.311"W	0.00	
8817.00†	89.987	180.604	7208.27	1448.12	-1382.38	620.26	40°10'10.435"N	104°40'29.325"W	0.00	
8917.00†	89.987	180.604	7208.29	1547.22	-1482.37	619.21	40°10'09.447"N	104°40'29.339"W	0.00	
9017.00†	89.987	180.604	7208.31	1646.33	-1582.37	618.15	40°10'08.459"N	104°40'29.352"W	0.00	
9117.00†	89.987	180.604	7208.34	1745.44	-1682.36	617.10	40°10'07.471"N	104°40'29.366"W	0.00	
9217.00†	89.987	180.604	7208.36	1844.54	-1782.36	616.05	40°10'06.483"N	104°40'29.379"W	0.00	
9317.00†	89.987	180.604	7208.38	1943.65	-1882.35	614.99	40°10'05.494"N	104°40'29.393"W	0.00	
9417.00†	89.987	180.604	7208.40	2042.76	-1982.35	613.94	40°10'04.506"N	104°40'29.407"W	0.00	
9517.00†	89.987	180.604	7208.42	2141.87	-2082.34	612.88	40°10'03.518"N	104°40'29.420"W	0.00	
9617.00†	89.987	180.604	7208.44	2240.97	-2182.33	611.83	40°10'02.530"N	104°40'29.434"W	0.00	
9717.00†	89.987	180.604	7208.47	2340.08	-2282.33	610.78	40°10'01.542"N	104°40'29.448"W	0.00	
9817.00†	89.987	180.604	7208.49	2439.19	-2382.32	609.72	40°10'00.554"N	104°40'29.461"W	0.00	
9917.00†	89.987	180.604	7208.51	2538.30	-2482.32	608.67	40°09'59.566"N	104°40'29.475"W	0.00	
10017.00†	89.987	180.604	7208.53	2637.40	-2582.31	607.61	40°09'58.577"N	104°40'29.488"W	0.00	
10117.00†	89.987	180.604	7208.55	2736.51	-2682.31	606.56	40°09'57.589"N	104°40'29.502"W	0.00	
10217.00†	89.987	180.604	7208.58	2835.62	-2782.30	605.51	40°09'56.601"N	104°40'29.516"W	0.00	
10317.00†	89.987	180.604	7208.60	2934.72	-2882.30	604.45	40°09'55.613"N	104°40'29.529"W	0.00	
10417.00†	89.987	180.604	7208.62	3033.83	-2982.29	603.40	40°09'54.625"N	104°40'29.543"W	0.00	
10517.00†	89.987	180.604	7208.64	3132.94	-3082.28	602.34	40°09'53.637"N	104°40'29.556"W	0.00	
10617.00†	89.987	180.604	7208.66	3232.05	-3182.28	601.29	40°09'52.649"N	104°40'29.570"W	0.00	
10717.00†	89.987	180.604	7208.68	3331.15	-3282.27	600.24	40°09'51.660"N	104°40'29.584"W	0.00	
10817.00†	89.987	180.604	7208.71	3430.26	-3382.27	599.18	40°09'50.672"N	104°40'29.597"W	0.00	
10917.00†	89.987	180.604	7208.73	3529.37	-3482.26	598.13	40°09'49.684"N	104°40'29.611"W	0.00	
11017.00†	89.987	180.604	7208.75	3628.48	-3582.26	597.07	40°09'48.696"N	104°40'29.624"W	0.00	
11117.00†	89.987	180.604	7208.77	3727.58	-3682.25	596.02	40°09'47.708"N	104°40'29.638"W	0.00	
11217.00†	89.987	180.604	7208.79	3826.69	-3782.25	594.97	40°09'46.720"N	104°40'29.652"W	0.00	
11317.00†	89.987	180.604	7208.82	3925.80	-3882.24	593.91	40°09'45.731"N	104°40'29.665"W	0.00	
11417.00†	89.987	180.604	7208.84	4024.90	-3982.23	592.86	40°09'44.743"N	104°40'29.679"W	0.00	
11517.00†	89.987	180.604	7208.86	4124.01	-4082.23	591.80	40°09'43.755"N	104°40'29.692"W	0.00	
11617.00†	89.987	180.604	7208.88	4223.12	-4182.22	590.75	40°09'42.767"N	104°40'29.706"W	0.00	
11717.00†	89.987	180.604	7208.90	4322.23	-4282.22	589.69	40°09'41.779"N	104°40'29.720"W	0.00	
11817.00†	89.987	180.604	7208.93	4421.33	-4382.21	588.64	40°09'40.791"N	104°40'29.733"W	0.00	
11917.00†	89.987	180.604	7208.95	4520.44	-4482.21	587.59	40°09'39.803"N	104°40'29.747"W	0.00	
12017.00†	89.987	180.604	7208.97	4619.55	-4582.20	586.53	40°09'38.814"N	104°40'29.761"W	0.00	
12117.00†	89.987	180.604	7208.99	4718.66	-4682.20	585.48	40°09'37.826"N	104°40'29.774"W	0.00	



# Planned Wellpath Report

REIGLE 29C-9HZ (PERMIT) PWP

Page 5 of 6

**REFERENCE WELLPATH IDENTIFICATION**

Operator	KERR-MCGEE OIL & GAS ONSHORE LP	Slot	SLOT#28 REIGLE 29C-9HZ (473'FNL & 291'FWL, SEC.4)
Area	COLORADO	Well	REIGLE 29C-9HZ
Field	WELD COUNTY (KERR MCGEE)	Wellbore	REIGLE 29C-9HZ PWB
Facility	SEC.04-T2N-R65W		

**WELLPATH DATA (136 stations)**

MD [ft]	Inclination [°]	Azimuth [°]	TVD [ft]	Vert Sect [ft]	North [ft]	East [ft]	Latitude	Longitude	DLS [°/100ft]	Comments
12160.14	89.987	180.604	7209.00 <sup>1</sup>	4761.41	-4725.34	585.02	40°09'37.400"N	104°40'29.780"W	0.00	End of Tangent (J)

**HOLE & CASING SECTIONS - Ref Wellbore: REIGLE 29C-9HZ PWB Ref Wellpath: REIGLE 29C-9HZ (PERMIT) PWP**

String/Diameter	Start MD [ft]	End MD [ft]	Interval [ft]	Start TVD [ft]	End TVD [ft]	Start N/S [ft]	Start E/W [ft]	End N/S [ft]	End E/W [ft]
13.5in Open Hole	17.00	856.00	839.00	17.00	856.00	0.00	0.00	0.00	0.00
9.625in Casing Surface	17.00	856.00	839.00	17.00	856.00	0.00	0.00	0.00	0.00
8.75in Open Hole	856.00	7585.41	6729.41	856.00	7208.00	0.00	0.00	-150.86	633.24
7in Casing Intermediate	17.00	7585.41	7568.41	17.00	7208.00	0.00	0.00	-150.86	633.24
6.125in Open Hole	7585.41	12160.14	4574.73	7208.00	7209.00	-150.86	633.24	-4725.34	585.02
4.5in Casing Production	17.00	12160.14	12143.14	17.00	7209.00	0.00	0.00	-4725.34	585.02

**TARGETS**

Name	MD [ft]	TVD [ft]	North [ft]	East [ft]	Grid East [US ft]	Grid North [US ft]	Latitude	Longitude	Shape
REIGLE 4-4HZ PAD SECTION LINES		0.00	-22.26	-19.87	3229948.40	1307042.68	40°10'23.876"N	104°40'37.571"W	polygon
1) REIGLE 29C-9HZ BHL ON PLAT (51'FNL & 927'FWL, SEC.9) REV-1	12160.14	7209.00	-4725.34	585.02	3230596.89	1302345.63	40°09'37.400"N	104°40'29.780"W	point
REIGLE 4-4HZ PAD HARDLINES (460' SETBACKS)		7220.00	-22.26	-19.87	3229948.40	1307042.68	40°10'23.876"N	104°40'37.571"W	polygon

**SURVEY PROGRAM - Ref Wellbore: REIGLE 29C-9HZ PWB Ref Wellpath: REIGLE 29C-9HZ (PERMIT) PWP**

Start MD [ft]	End MD [ft]	Positional Uncertainty Model	Log Name/Comment	Wellbore
17.00	7585.41	NaviTrak (Standard)		REIGLE 29C-9HZ PWB
7585.41	12160.14	OnTrak (Standard)		REIGLE 29C-9HZ PWB



Planned Wellpath Report  
REIGLE 29C-9HZ (PERMIT) PWP  
Page 6 of 6



REFERENCE WELLPATH IDENTIFICATION			
Operator	KERR-MCGEE OIL & GAS ONSHORE LP	Slot	SLOT#28 REIGLE 29C-9HZ (473'FNL & 291'FWL, SEC.4)
Area	COLORADO	Well	REIGLE 29C-9HZ
Field	WELD COUNTY (KERR MCGEE)	Wellbore	REIGLE 29C-9HZ PWB
Facility	SEC.04-T2N-R65W		

WELLPATH COMMENTS				
MD [ft]	Inclination [°]	Azimuth [°]	TVD [ft]	Comment
3988.38	7.640	53.720	3965.00	PARKMAN
4474.70	7.640	53.720	4447.00	SUSSEX
6915.64	23.768	166.505	6861.00	SHARON SPRINGS
6992.35	31.228	170.412	6929.00	NIOBRARA A
7056.60	37.536	172.578	6982.00	NIOBRARA B
7158.56	47.603	174.984	7057.00	NIOBRARA C
7445.21	76.049	179.078	7191.00	FORT HAYS
7509.56	82.446	179.790	7203.00	CODELL