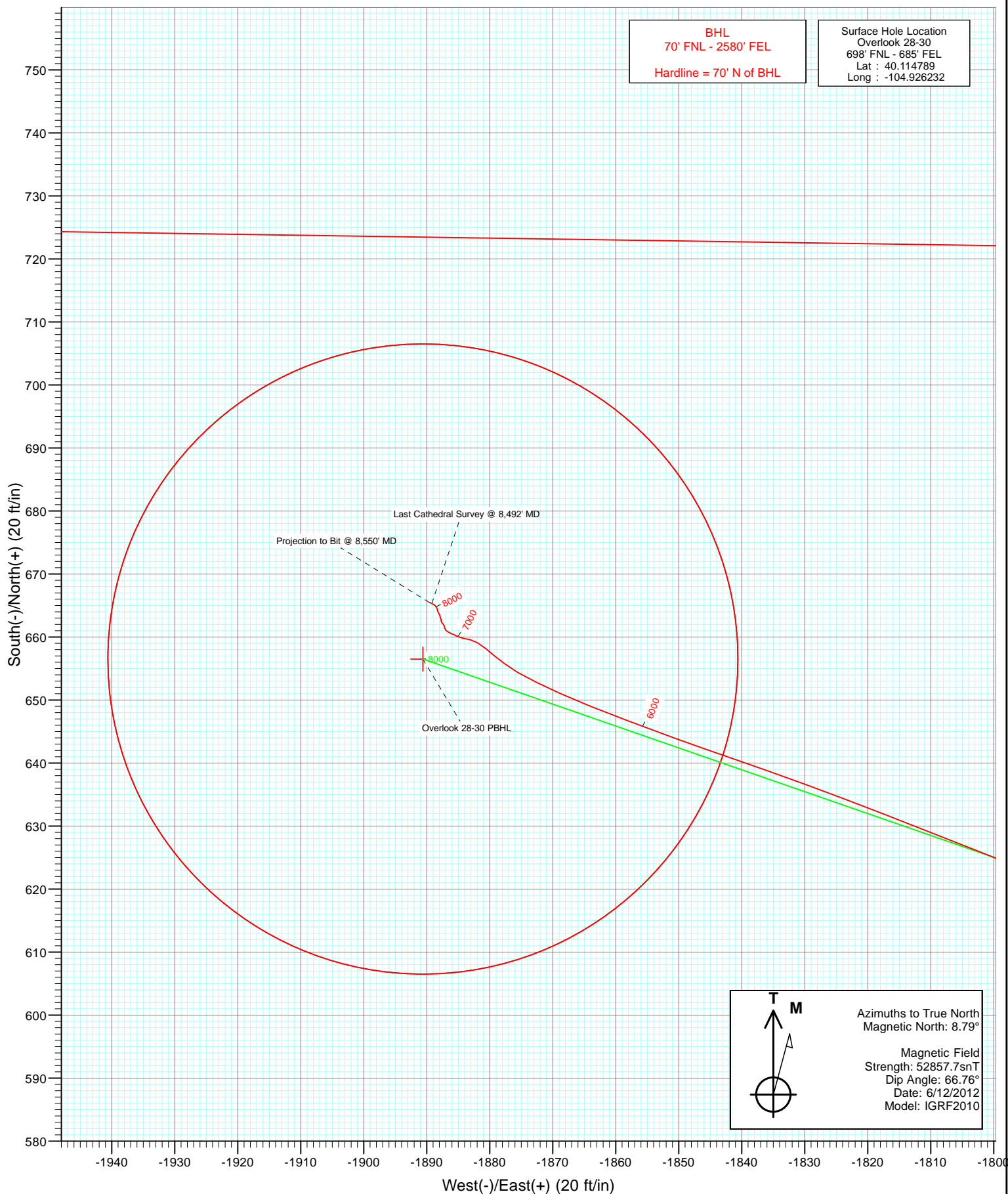


Azimuths to True North  
Magnetic North: 8.79°

Magnetic Field  
Strength: 52857.7snT  
Dip Angle: 66.76°  
Date: 6/12/2012  
Model: IGRF2010

FINAL Overlook 28-30 166655 125358; LR KB=15° @ 5025.0ft (Xtreme 14) North American Datum 1983 Well Overlook 28-30, True North						
Type	Target	Azimuth	Origin	Type	N/S	E/W
Target	Overlook 28-30 PBHL	289.15	Slot		0.0	0.0
						From TVD
						0.0
Name	TVD	+N/-S	+E/-W	Latitude	Longitude	
Overlook 28-30 PBHL	8183.0	656.5	-1890.6	40.116591	-104.932992	



## Survey Report

<b>Company:</b>	Anadarko Petroleum Corporation	<b>Local Co-ordinate Reference:</b>	Well Overlook 28-30
<b>Project:</b>	DJ Wattenberg	<b>TVD Reference:</b>	KB=15' @ 5025.0ft (Xtreme 14)
<b>Site:</b>	NENE Sec30-T2N-R67W (Overlook 1-30 pad)	<b>MD Reference:</b>	KB=15' @ 5025.0ft (Xtreme 14)
<b>Well:</b>	Overlook 28-30	<b>North Reference:</b>	True
<b>Wellbore:</b>	DD	<b>Survey Calculation Method:</b>	Minimum Curvature
<b>Design:</b>	FINAL	<b>Database:</b>	USA EDM 5000 Multi Users DB

<b>Project</b>	DJ Wattenberg		
<b>Map System:</b>	US State Plane 1983	<b>System Datum:</b>	Mean Sea Level
<b>Geo Datum:</b>	North American Datum 1983		
<b>Map Zone:</b>	Colorado Northern Zone		

Site		NENE Sec30-T2N-R67W (Overlook 1-30 pad)			
Site Position:		Northing:	1,285,208.05 ft	Latitude:	40.114856
From:	Lat/Long	Easting:	3,160,505.89 ft	Longitude:	-104.926131
Position Uncertainty:	0.0 ft	Slot Radius:	13.200 in	Grid Convergence:	0.37 °

Well		Overlook 28-30				
Well Position	+N/-S	0.0 ft	Northing:	1,285,183.45 ft	Latitude:	40.114789
	+E/-W	0.0 ft	Easting:	3,160,477.81 ft	Longitude:	-104.926232
Position Uncertainty		0.0 ft	Wellhead Elevation:	ft	Ground Level:	5,010.0 ft

<b>Wellbore</b>	DD				
<b>Magnetics</b>	<b>Model Name</b>	<b>Sample Date</b>	<b>Declination (°)</b>	<b>Dip Angle (°)</b>	<b>Field Strength (nT)</b>
	IGRF2010	6/12/2012	8.79	66.76	52,858

<b>Design</b>	FINAL				
<b>Audit Notes:</b>					
<b>Version:</b>	1.0	<b>Phase:</b>	ACTUAL	<b>Tie On Depth:</b>	0.0
<b>Vertical Section:</b>	<b>Depth From (TVD)</b>	<b>+N/-S</b>	<b>+E/-W</b>	<b>Direction</b>	
	(ft)	(ft)	(ft)	(°)	
	0.0	0.0	0.0	289.15	

<b>Survey Program</b>	<b>Date</b>	6/18/2012			
<b>From (ft)</b>	<b>To (ft)</b>	<b>Survey (Wellbore)</b>	<b>Tool Name</b>	<b>Description</b>	
80.0	8,550.0	Survey #1 (DD)	MWD	Geolink MWD	

<b>Survey</b>									
<b>Measured</b>	<b>Vertical</b>	<b>Vertical</b>	<b>Dogleg</b>	<b>Build</b>	<b>Formations /</b>				
<b>Depth</b>	<b>Inclination</b>	<b>Azimuth</b>	<b>Depth</b>	<b>+N/-S</b>	<b>+E/-W</b>	<b>Section</b>	<b>Rate</b>	<b>Rate</b>	<b>Comments</b>
(ft)	(°)	(°)	(ft)	(ft)	(ft)	(ft)	(°/100ft)	(°/100ft)	
0.0	0.00	0.00	0.0	0.0	0.0	0.0	0.00	0.00	
80.0	1.00	65.80	80.0	0.3	0.6	-0.5	1.25	1.25	
174.0	0.50	356.60	174.0	1.0	1.4	-0.9	1.01	-0.53	
267.0	1.50	307.60	267.0	2.2	0.4	0.4	1.32	1.08	
360.0	2.70	291.50	359.9	3.7	-2.6	3.7	1.43	1.29	
450.0	4.60	281.60	449.7	5.2	-8.1	9.4	2.22	2.11	
538.0	6.70	282.50	537.3	7.0	-16.6	18.0	2.39	2.39	
623.0	8.10	283.60	621.6	9.5	-27.3	28.9	1.66	1.65	
711.0	9.30	288.50	708.6	13.2	-40.0	42.2	1.60	1.36	
797.0	10.60	286.80	793.3	17.7	-54.2	57.0	1.55	1.51	
858.0	11.90	288.50	853.1	21.4	-65.5	68.9	2.20	2.13	
928.0	12.80	290.20	921.5	26.3	-79.7	83.9	1.39	1.29	
1,017.0	14.80	292.10	1,007.9	34.0	-99.4	105.1	2.30	2.25	

## Survey Report

<b>Company:</b>	Anadarko Petroleum Corporation	<b>Local Co-ordinate Reference:</b>	Well Overlook 28-30
<b>Project:</b>	DJ Wattenberg	<b>TVD Reference:</b>	KB=15' @ 5025.0ft (Xtreme 14)
<b>Site:</b>	NENE Sec30-T2N-R67W (Overlook 1-30 pad)	<b>MD Reference:</b>	KB=15' @ 5025.0ft (Xtreme 14)
<b>Well:</b>	Overlook 28-30	<b>North Reference:</b>	True
<b>Wellbore:</b>	DD	<b>Survey Calculation Method:</b>	Minimum Curvature
<b>Design:</b>	FINAL	<b>Database:</b>	USA EDM 5000 Multi Users DB

Survey									
Measured Depth (ft)	Inclination (°)	Azimuth (°)	Vertical Depth (ft)	+N/-S (ft)	+E/-W (ft)	Vertical Section (ft)	Dogleg Rate (°/100ft)	Build Rate (°/100ft)	Formations / Comments
1,106.0	16.30	289.50	1,093.7	42.4	-121.8	128.9	1.86	1.69	
1,171.0	17.80	291.90	1,155.8	49.2	-139.6	148.0	2.55	2.31	
1,257.0	20.80	290.70	1,236.9	59.5	-166.1	176.4	3.52	3.49	
1,344.0	20.60	291.30	1,318.3	70.5	-194.8	207.1	0.34	-0.23	
1,430.0	21.70	290.70	1,398.5	81.6	-223.7	238.1	1.30	1.28	
1,518.0	21.80	288.60	1,480.3	92.6	-254.4	270.7	0.89	0.11	
1,607.0	20.70	288.20	1,563.2	102.8	-285.0	303.0	1.25	-1.24	
1,695.0	21.80	287.10	1,645.2	112.4	-315.4	334.9	1.33	1.25	
1,783.0	21.90	287.60	1,726.9	122.2	-346.7	367.6	0.24	0.11	
1,873.0	21.10	290.30	1,810.7	132.9	-377.9	400.6	1.41	-0.89	
1,961.0	21.70	290.40	1,892.6	144.1	-408.0	432.7	0.68	0.68	
2,049.0	22.60	289.50	1,974.1	155.4	-439.2	465.9	1.09	1.02	
2,137.0	22.60	290.10	2,055.3	166.8	-471.0	499.7	0.26	0.00	
2,225.0	21.70	291.70	2,136.8	178.7	-502.0	532.8	1.23	-1.02	
2,314.0	22.20	291.00	2,219.4	190.8	-533.0	566.1	0.63	0.56	
2,403.0	22.30	288.80	2,301.8	202.3	-564.7	599.8	0.94	0.11	
2,491.0	22.90	287.00	2,383.0	212.6	-596.9	633.6	1.04	0.68	
2,579.0	22.90	287.20	2,464.1	222.7	-629.6	667.8	0.09	0.00	
2,666.0	22.50	286.00	2,544.3	232.3	-661.8	701.3	0.70	-0.46	
2,755.0	22.10	287.90	2,626.7	242.1	-694.1	735.1	0.93	-0.45	
2,842.0	22.30	288.10	2,707.2	252.3	-725.3	767.9	0.25	0.23	
2,932.0	22.80	290.40	2,790.3	263.7	-757.9	802.5	1.13	0.56	
3,020.0	22.80	291.60	2,871.5	275.9	-789.7	836.5	0.53	0.00	
3,110.0	22.20	289.50	2,954.6	288.0	-822.0	871.0	1.11	-0.67	
3,198.0	22.50	289.50	3,036.0	299.2	-853.5	904.4	0.34	0.34	
3,286.0	22.80	287.10	3,117.2	309.8	-885.7	938.3	1.10	0.34	
3,375.0	23.30	288.80	3,199.1	320.5	-918.8	973.1	0.94	0.56	
3,465.0	22.30	289.80	3,282.1	332.1	-951.7	1,008.0	1.19	-1.11	
3,553.0	21.80	290.60	3,363.7	343.5	-982.8	1,041.0	0.66	-0.57	
3,642.0	21.60	289.10	3,446.3	354.6	-1,013.7	1,073.9	0.66	-0.22	
3,728.0	22.90	285.20	3,525.9	364.2	-1,044.8	1,106.5	2.29	1.51	
3,816.0	22.40	285.70	3,607.2	373.2	-1,077.5	1,140.3	0.61	-0.57	
3,905.0	20.90	288.60	3,689.9	382.9	-1,108.8	1,173.1	2.07	-1.69	
3,995.0	21.30	286.90	3,773.8	392.8	-1,139.7	1,205.5	0.81	0.44	
4,084.0	22.40	287.60	3,856.5	402.6	-1,171.3	1,238.6	1.27	1.24	
4,173.0	23.50	290.70	3,938.4	414.0	-1,204.1	1,273.3	1.84	1.24	
4,260.0	24.00	291.90	4,018.0	426.7	-1,236.7	1,308.3	0.80	0.57	
4,350.0	22.30	291.70	4,100.8	439.9	-1,269.6	1,343.6	1.89	-1.89	
4,440.0	23.40	289.30	4,183.7	452.1	-1,302.3	1,378.6	1.60	1.22	
4,528.0	22.90	287.60	4,264.6	463.0	-1,335.1	1,413.2	0.95	-0.57	
4,617.0	23.20	288.90	4,346.5	474.0	-1,368.2	1,448.0	0.66	0.34	
4,705.0	22.40	290.50	4,427.7	485.4	-1,400.3	1,482.1	1.15	-0.91	
4,795.0	22.20	288.80	4,510.9	496.9	-1,432.5	1,516.2	0.75	-0.22	
4,885.0	23.20	286.10	4,594.0	507.3	-1,465.6	1,550.9	1.60	1.11	
4,974.0	24.70	286.90	4,675.3	517.6	-1,500.3	1,587.0	1.72	1.69	
5,063.0	24.00	286.50	4,756.4	528.1	-1,535.4	1,623.7	0.81	-0.79	
5,153.0	22.00	287.30	4,839.2	538.3	-1,569.1	1,658.8	2.25	-2.22	
5,241.0	22.30	288.10	4,920.7	548.4	-1,600.7	1,692.0	0.48	0.34	
5,329.0	20.70	289.20	5,002.6	558.7	-1,631.2	1,724.2	1.87	-1.82	
5,418.0	20.90	291.00	5,085.8	569.6	-1,660.9	1,755.8	0.75	0.22	
5,508.0	18.90	291.80	5,170.4	580.8	-1,689.4	1,786.4	2.24	-2.22	
5,596.0	19.30	292.30	5,253.6	591.6	-1,716.1	1,815.2	0.49	0.45	
5,684.0	17.20	292.20	5,337.1	602.0	-1,741.6	1,842.7	2.39	-2.39	

## Survey Report

<b>Company:</b>	Anadarko Petroleum Corporation	<b>Local Co-ordinate Reference:</b>	Well Overlook 28-30
<b>Project:</b>	DJ Wattenberg	<b>TVD Reference:</b>	KB=15' @ 5025.0ft (Xtreme 14)
<b>Site:</b>	NENE Sec30-T2N-R67W (Overlook 1-30 pad)	<b>MD Reference:</b>	KB=15' @ 5025.0ft (Xtreme 14)
<b>Well:</b>	Overlook 28-30	<b>North Reference:</b>	True
<b>Wellbore:</b>	DD	<b>Survey Calculation Method:</b>	Minimum Curvature
<b>Design:</b>	FINAL	<b>Database:</b>	USA EDM 5000 Multi Users DB

Survey									
Measured Depth (ft)	Inclination (°)	Azimuth (°)	Vertical Depth (ft)	+N/-S (ft)	+E/-W (ft)	Vertical Section (ft)	Dogleg Rate (°/100ft)	Build Rate (°/100ft)	Formations / Comments
5,771.0	15.20	291.20	5,420.7	611.0	-1,764.2	1,867.0	2.32	-2.30	
5,858.0	13.50	291.50	5,505.0	618.8	-1,784.2	1,888.5	1.96	-1.95	
5,947.0	11.50	291.50	5,591.9	625.9	-1,802.2	1,907.8	2.25	-2.25	
6,035.0	9.80	291.30	5,678.3	631.8	-1,817.3	1,924.0	1.93	-1.93	
6,122.0	8.30	290.10	5,764.3	636.7	-1,830.1	1,937.7	1.74	-1.72	
6,210.0	6.90	288.90	5,851.5	640.6	-1,841.1	1,949.3	1.60	-1.59	
6,300.0	5.80	290.00	5,940.9	643.9	-1,850.5	1,959.3	1.23	-1.22	
6,389.0	4.70	290.80	6,029.5	646.7	-1,858.1	1,967.4	1.24	-1.24	
6,477.0	3.70	291.50	6,117.3	649.0	-1,864.1	1,973.9	1.14	-1.14	
6,567.0	3.00	295.10	6,207.2	651.1	-1,868.9	1,979.1	0.81	-0.78	
6,654.0	2.40	295.00	6,294.1	652.8	-1,872.6	1,983.2	0.69	-0.69	
6,744.0	1.80	301.80	6,384.0	654.4	-1,875.6	1,986.4	0.72	-0.67	
6,832.0	1.50	306.40	6,472.0	655.8	-1,877.7	1,988.9	0.37	-0.34	
6,920.0	1.20	308.30	6,559.9	657.1	-1,879.3	1,990.9	0.34	-0.34	
7,009.0	1.10	311.80	6,648.9	658.2	-1,880.7	1,992.5	0.14	-0.11	
7,097.0	1.00	298.80	6,736.9	659.1	-1,882.0	1,994.1	0.29	-0.11	
7,187.0	0.60	278.80	6,826.9	659.6	-1,883.1	1,995.3	0.54	-0.44	
7,275.0	0.70	281.30	6,914.9	659.8	-1,884.1	1,996.3	0.12	0.11	
7,362.0	0.60	296.50	7,001.9	660.1	-1,885.0	1,997.3	0.23	-0.11	
7,452.0	0.40	293.80	7,091.9	660.4	-1,885.8	1,998.0	0.22	-0.22	
7,540.0	0.50	295.40	7,179.9	660.7	-1,886.4	1,998.7	0.11	0.11	
7,628.0	0.30	312.00	7,267.9	661.0	-1,886.9	1,999.3	0.26	-0.23	
7,717.0	0.30	347.40	7,356.9	661.4	-1,887.1	1,999.7	0.20	0.00	
7,807.0	0.20	346.10	7,446.9	661.8	-1,887.2	1,999.9	0.11	-0.11	
7,893.0	0.30	313.10	7,532.9	662.1	-1,887.4	2,000.2	0.20	0.12	
7,981.0	0.20	330.20	7,620.9	662.4	-1,887.7	2,000.5	0.14	-0.11	
8,069.0	0.50	356.50	7,708.9	662.9	-1,887.8	2,000.7	0.38	0.34	
8,157.0	0.40	327.10	7,796.9	663.5	-1,887.9	2,001.1	0.28	-0.11	
8,246.0	0.40	338.20	7,885.9	664.1	-1,888.2	2,001.6	0.09	0.00	
8,332.0	0.40	346.70	7,971.9	664.6	-1,888.4	2,001.9	0.07	0.00	
8,420.0	0.40	299.40	8,059.9	665.1	-1,888.8	2,002.4	0.36	0.00	
8,492.0	0.40	294.40	8,131.9	665.3	-1,889.2	2,002.9	0.05	0.00	Last Cathedral Survey @ 8,492' MD
8,543.1	0.40	294.40	8,183.0	665.5	-1,889.5	2,003.3	0.00	0.00	Overlook 28-30 PBHL
8,550.0	0.40	294.40	8,189.9	665.5	-1,889.6	2,003.3	0.00	0.00	Projection to Bit @ 8,550' MD

## Survey Report

<b>Company:</b>	Anadarko Petroleum Corporation	<b>Local Co-ordinate Reference:</b>	Well Overlook 28-30
<b>Project:</b>	DJ Wattenberg	<b>TVD Reference:</b>	KB=15' @ 5025.0ft (Xtreme 14)
<b>Site:</b>	NENE Sec30-T2N-R67W (Overlook 1-30 pad)	<b>MD Reference:</b>	KB=15' @ 5025.0ft (Xtreme 14)
<b>Well:</b>	Overlook 28-30	<b>North Reference:</b>	True
<b>Wellbore:</b>	DD	<b>Survey Calculation Method:</b>	Minimum Curvature
<b>Design:</b>	FINAL	<b>Database:</b>	USA EDM 5000 Multi Users DB

Targets									
Target Name									
- hit/miss target	Dip Angle	Dip Dir.	TVD	+N/-S	+E/-W	Northing	Easting	Latitude	Longitude
- Shape	(°)	(°)	(ft)	(ft)	(ft)	(ft)	(ft)		
Overlook 28-30 PBHL	0.00	0.00	8,183.0	656.5	-1,890.6	1,285,827.72	3,158,582.99	40.116591	-104.932992
- actual wellpath misses target center by 9.0ft at 8543.1ft MD (8183.0 TVD, 665.5 N, -1889.5 E)									
- Circle (radius 50.0)									

Design Annotations					
Measured Depth	Vertical Depth	Local Coordinates			
(ft)	(ft)	+N/-S (ft)	+E/-W (ft)	Comment	
8,492.0	8,131.9	665.3	-1,889.2	Last Cathedral Survey @ 8,492' MD	
8,550.0	8,189.9	665.5	-1,889.6	Projection to Bit @ 8,550' MD	

Checked By: \_\_\_\_\_ Approved By: \_\_\_\_\_ Date: \_\_\_\_\_