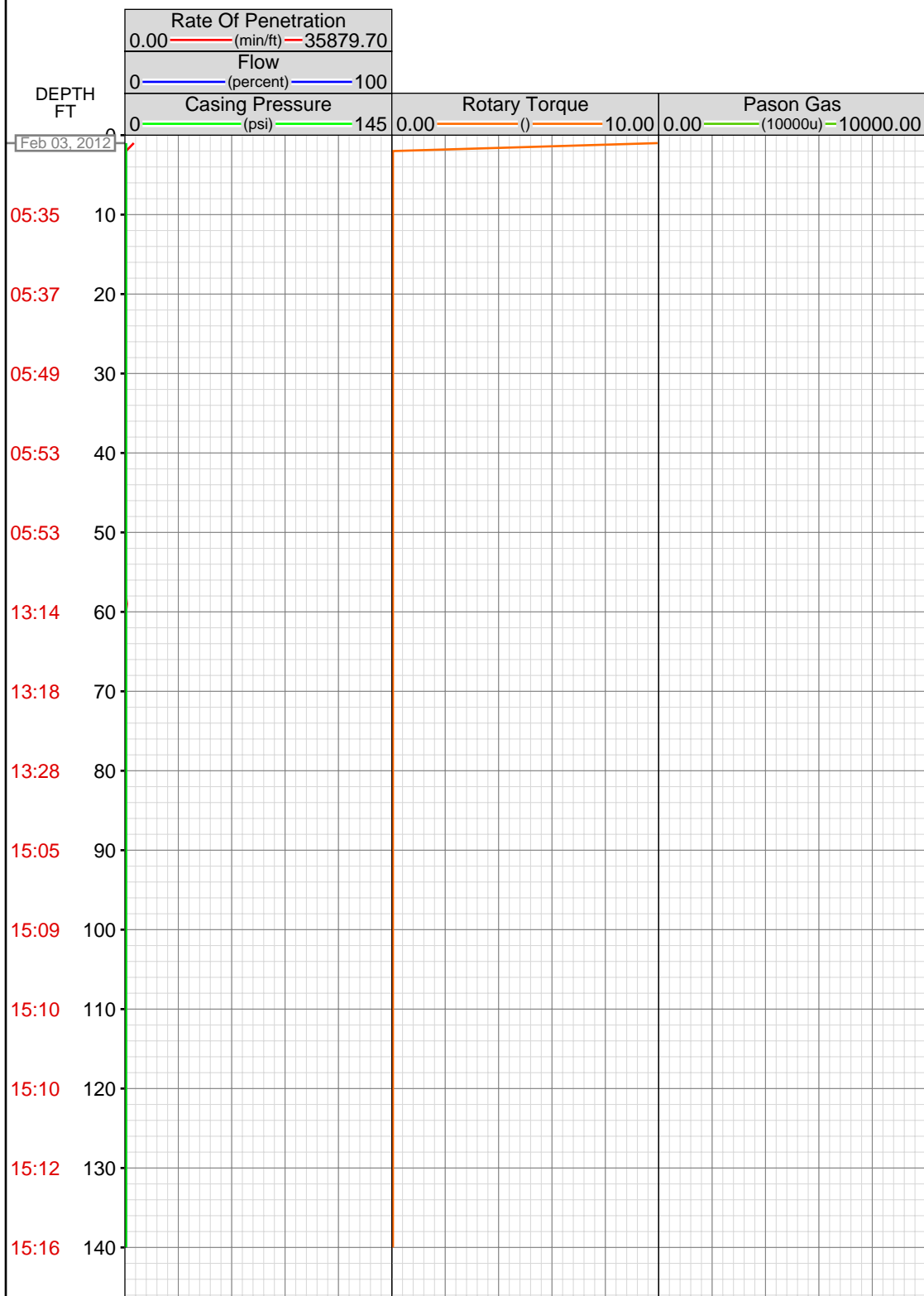


DataHub EDR Log

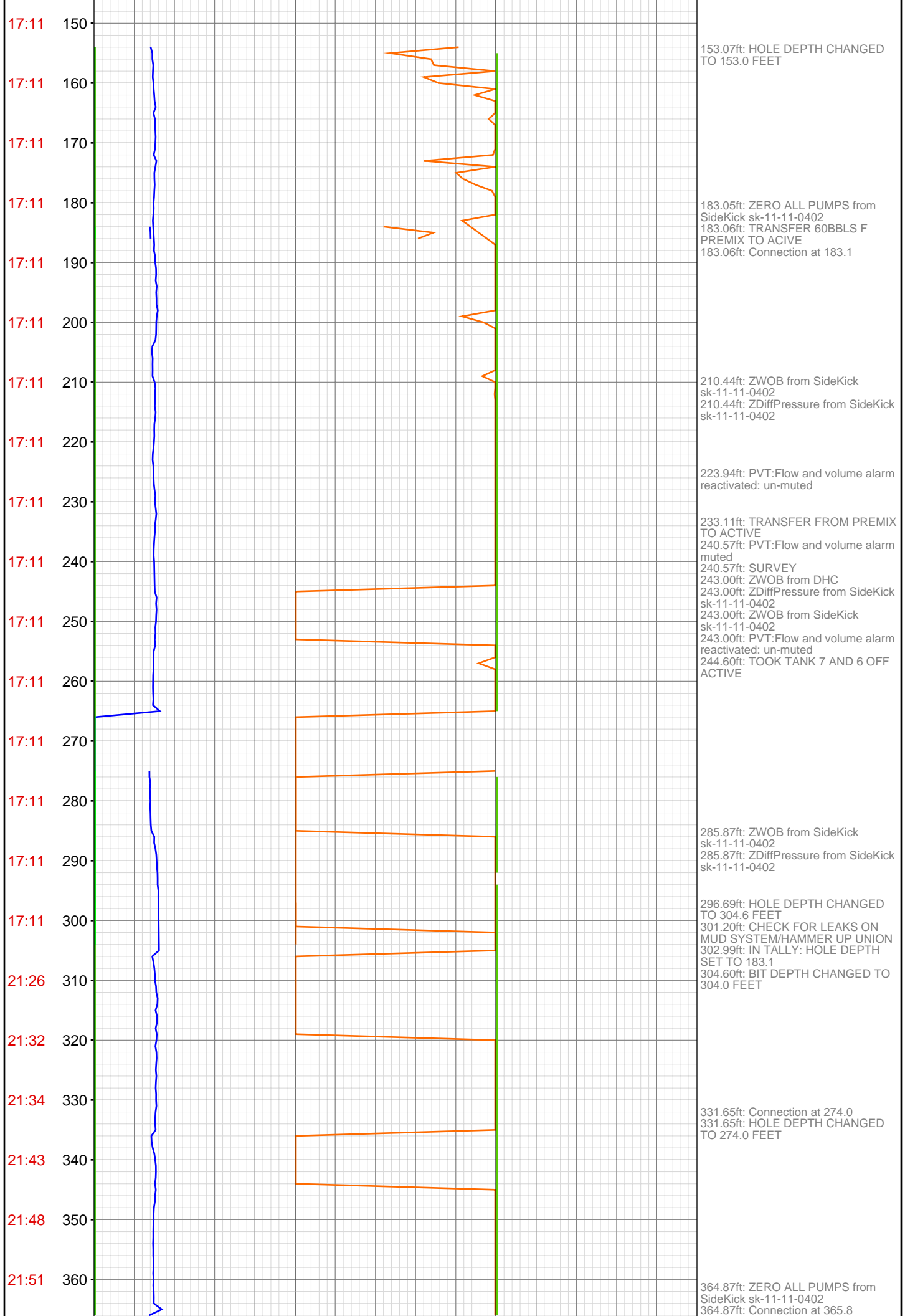
Tue Sep 18, 2012 07:50:11
Well Dossier 1327384717
Marilyn Tucker

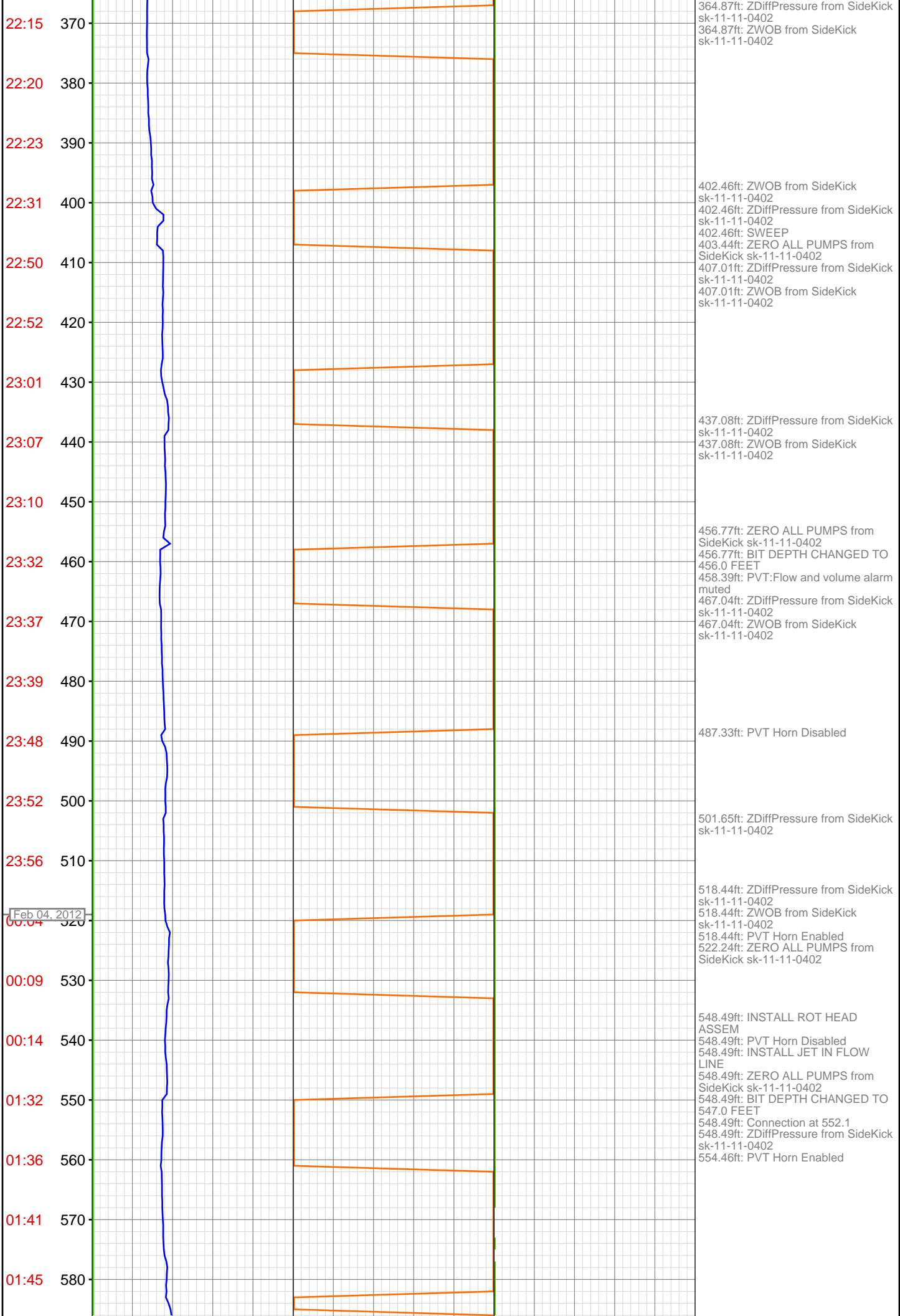
OPERATOR: EnCana Oil & Gas (USA), Inc.
WELL: SG WD08A-19 C19 496
FIELD:
LOCATION:
COUNTRY: USA
RIG: Pat-UTI 330

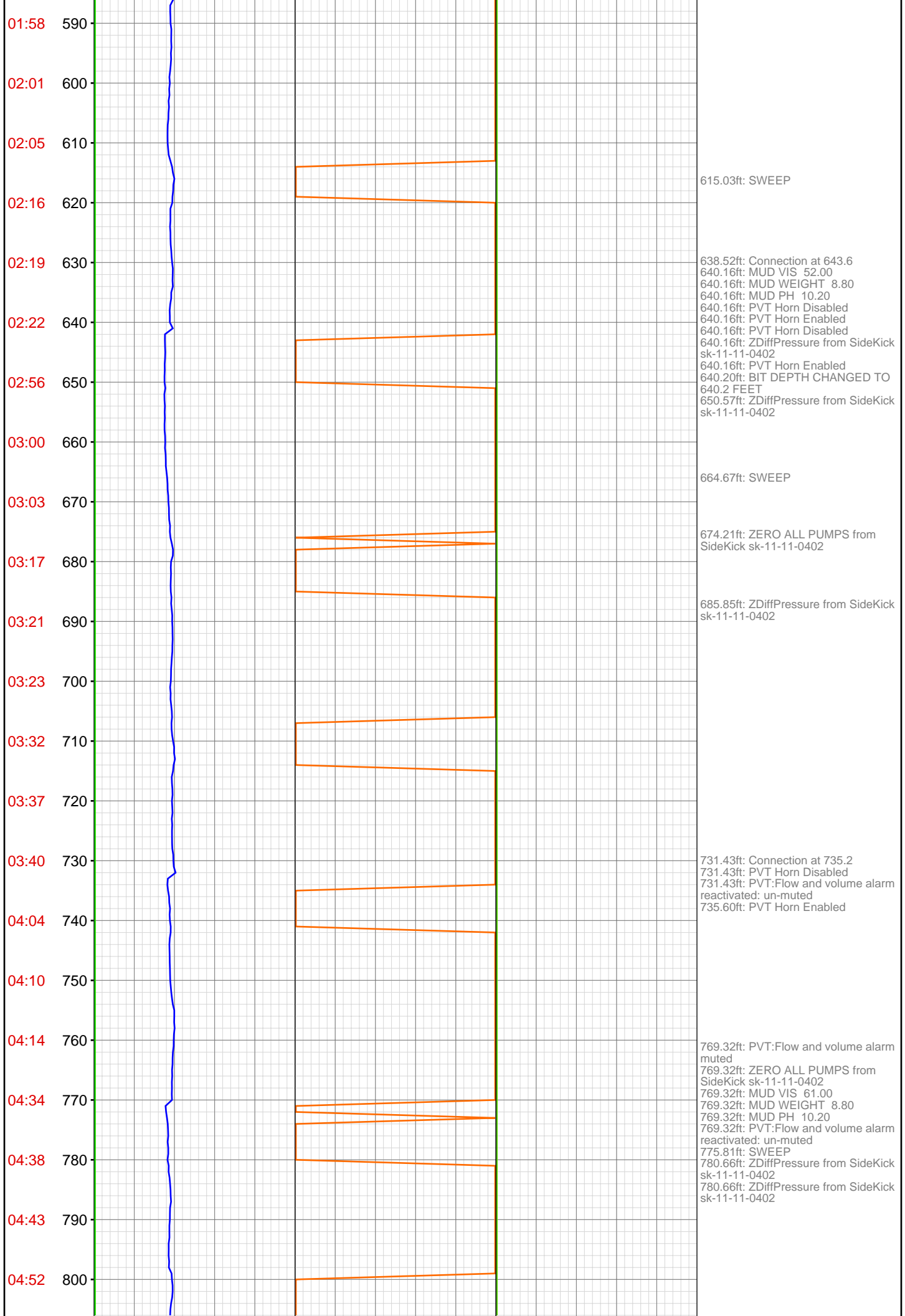
CONTRACTOR: Patterson-UTI Drilling Company
UNIQUE WELL ID: 504521131
SPUD DATE: Feb 03, 2012 18:00
RELEASE DATE: Feb 07, 2012 12:00

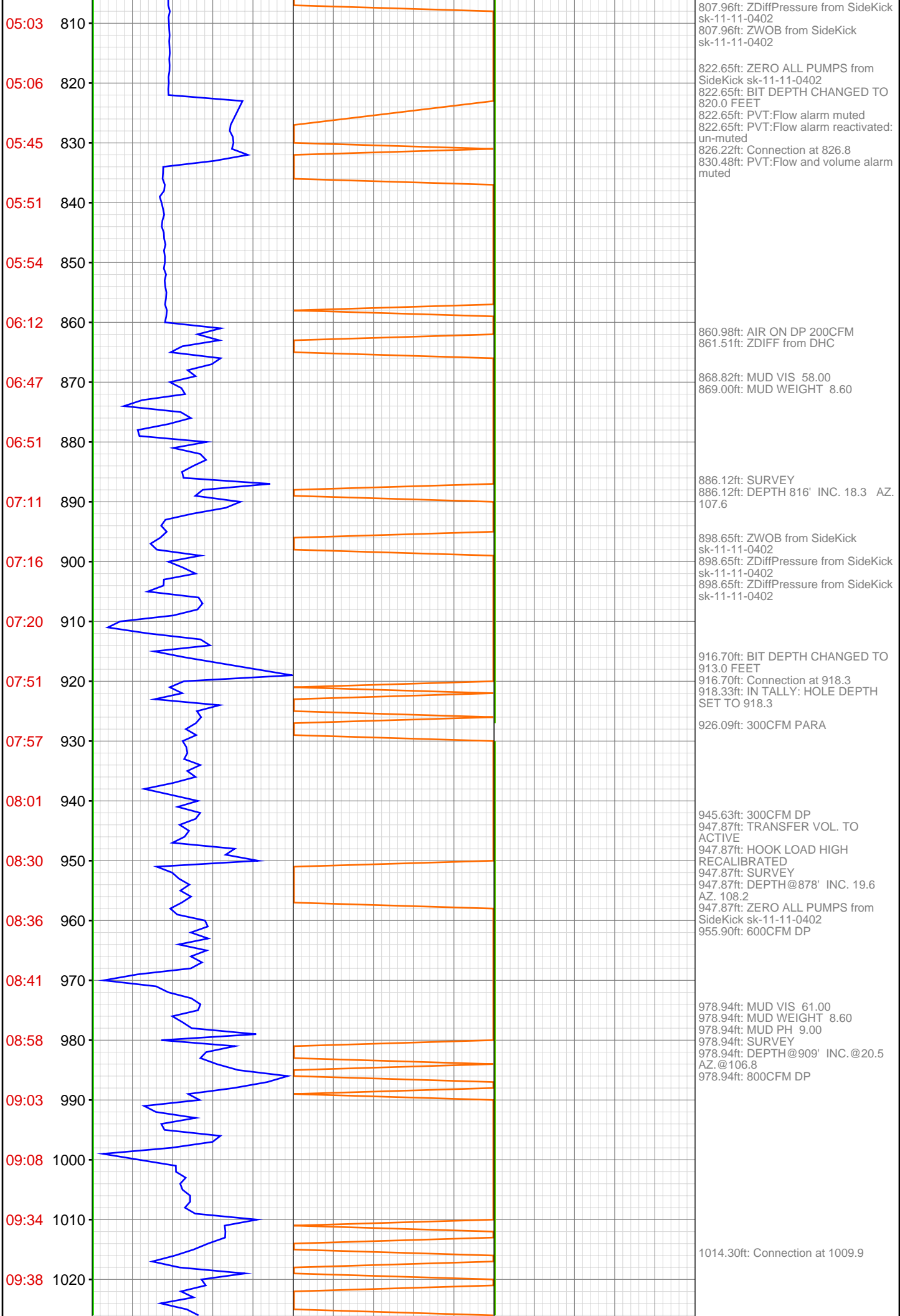


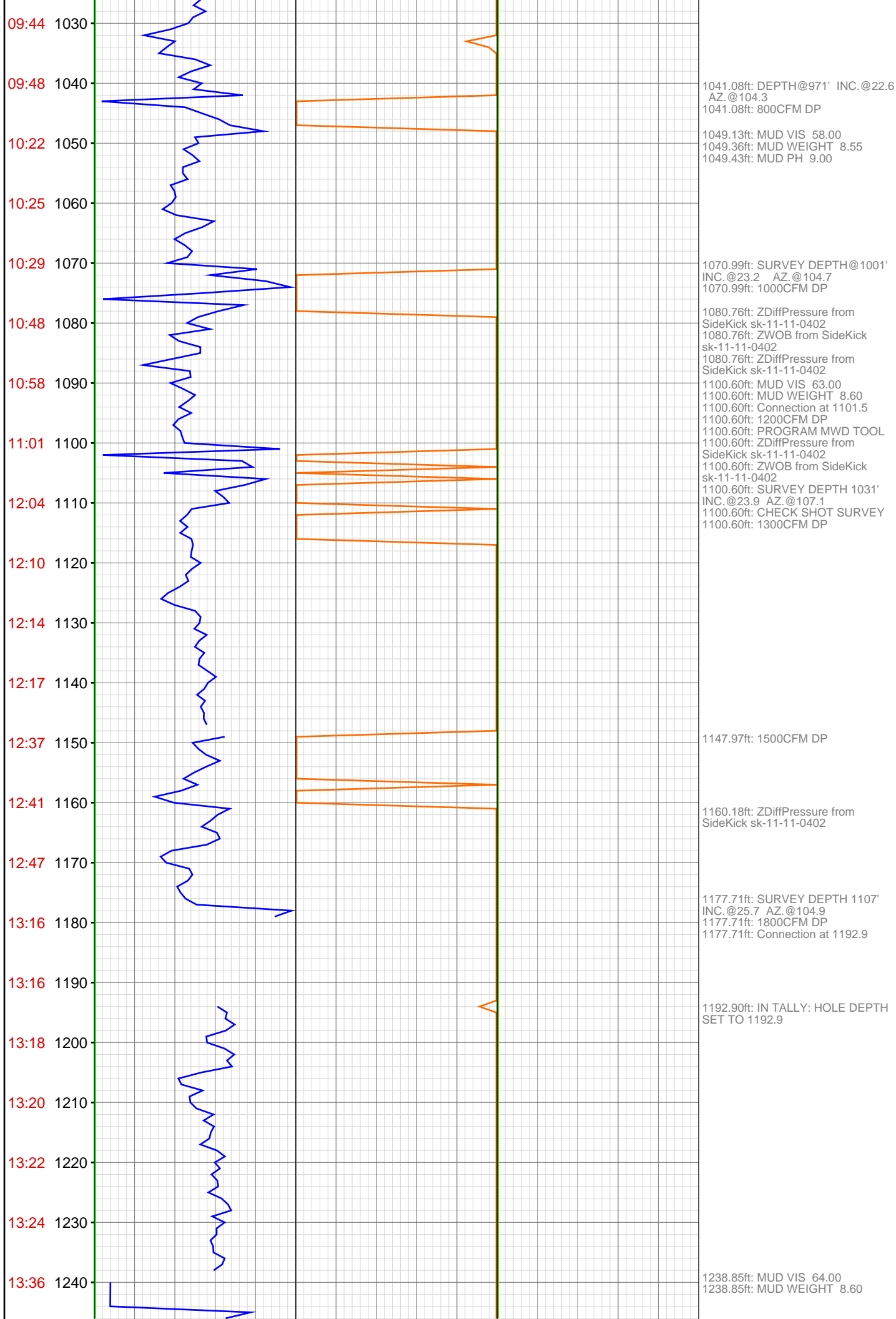
MEMOS

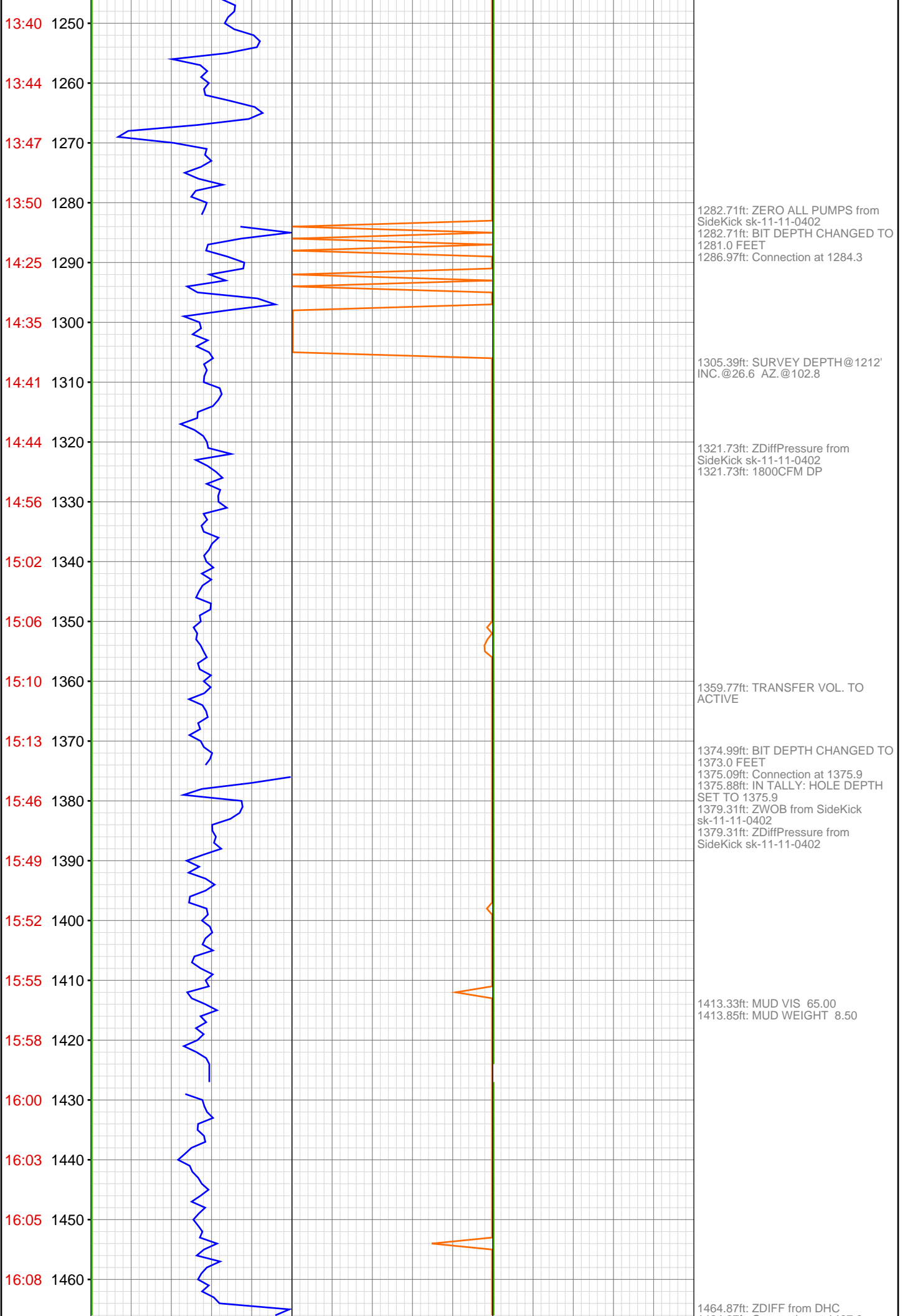


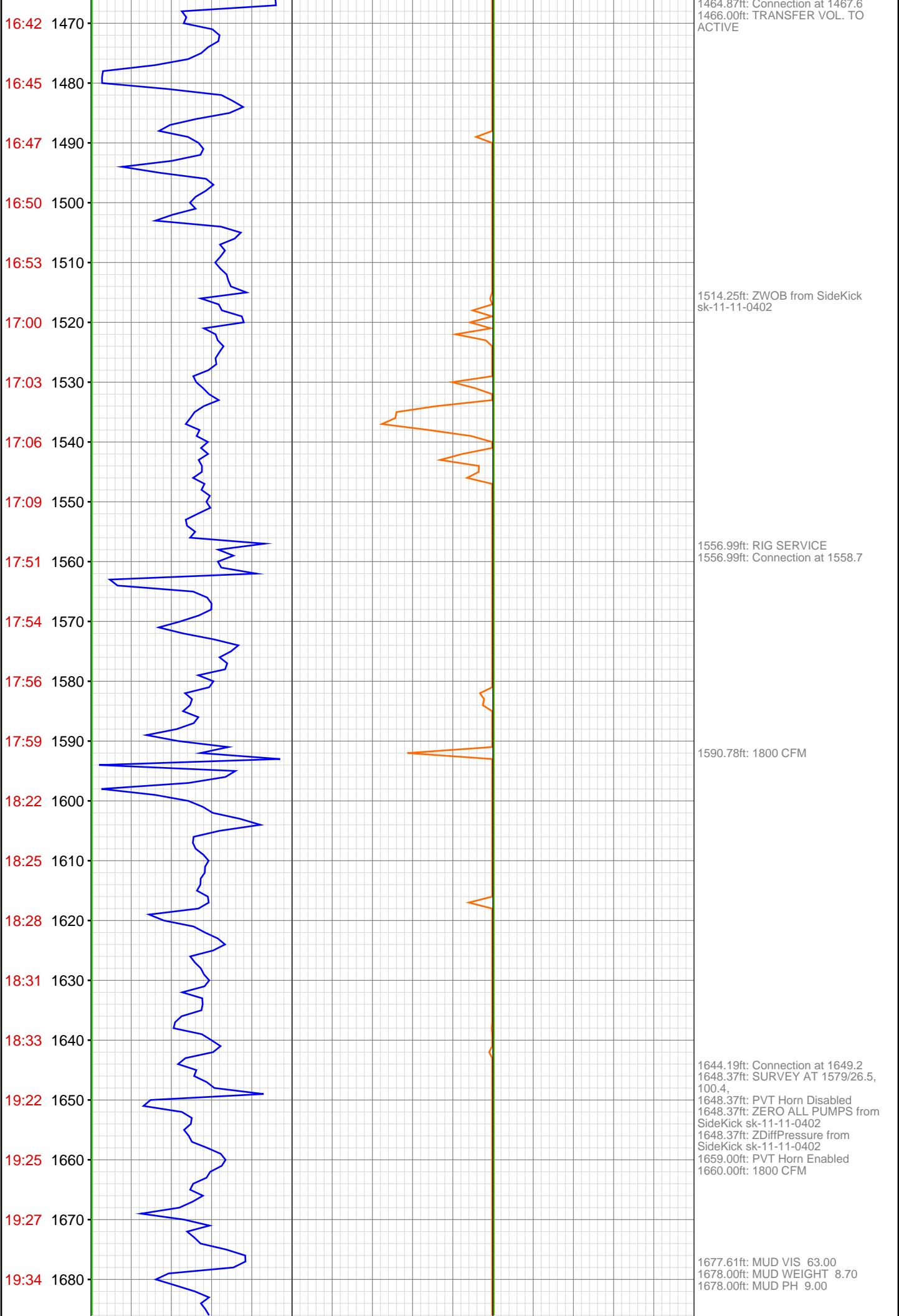


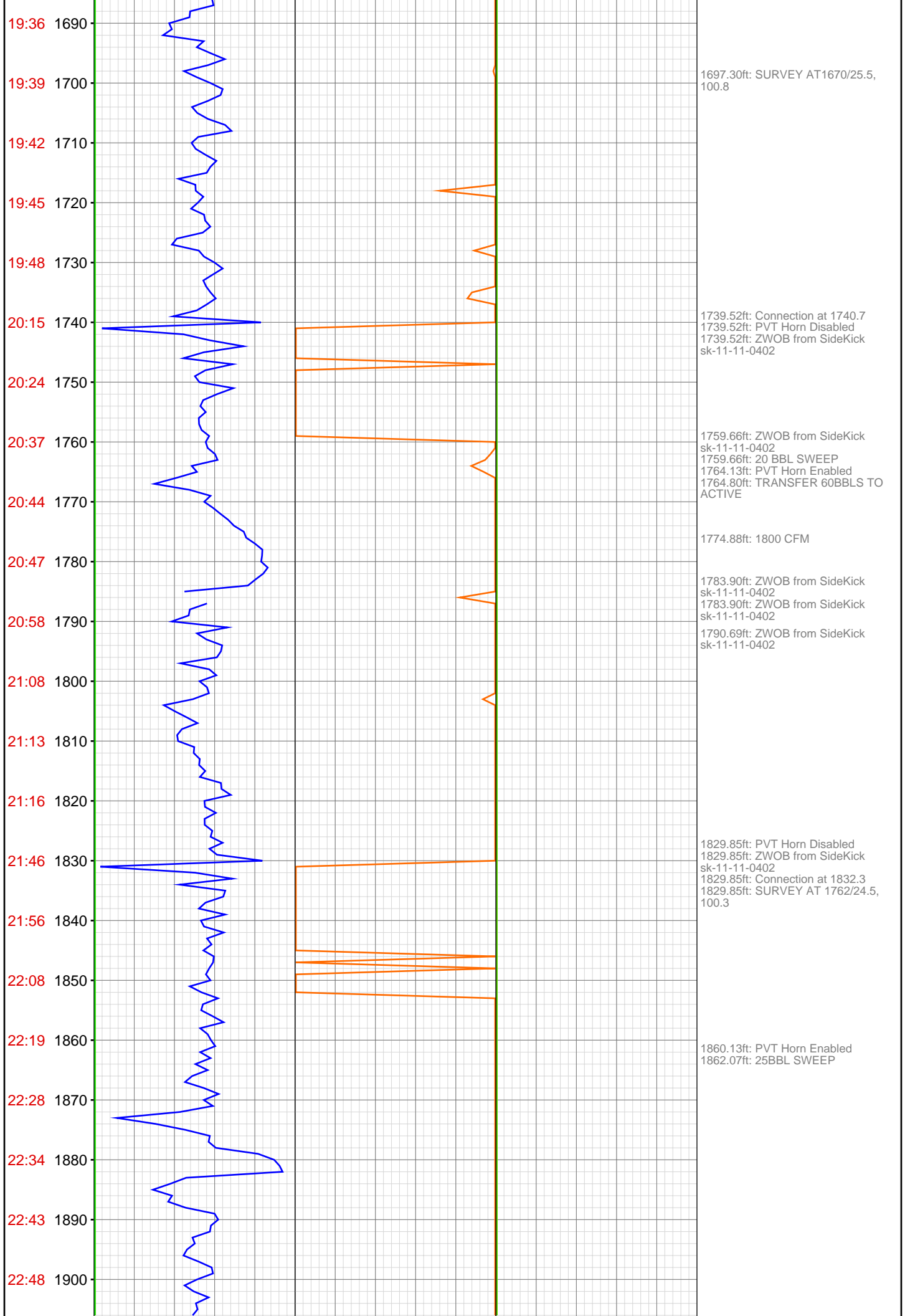




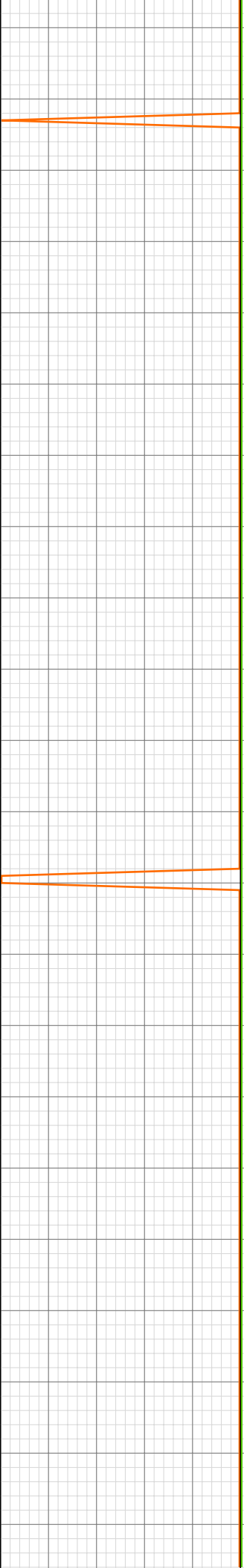
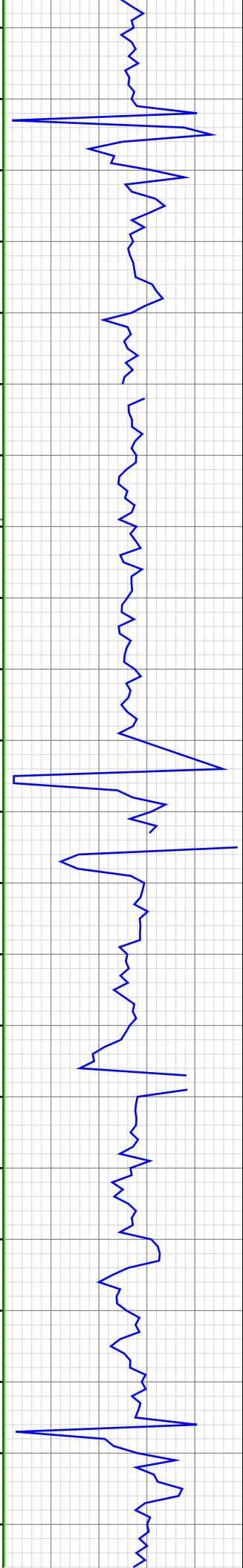








22:53 1910
22:58 1920
23:29 1930
23:42 1940
23:46 1950
23:51 1960
23:56 1970
Feb 05, 2012
00:00 1980
00:04 1990
00:08 2000
00:31 2010
00:41 2020
01:01 2030
01:18 2040
01:21 2050
01:38 2060
01:45 2070
01:49 2080
01:52 2090
01:55 2100
02:27 2110
02:51 2120



1921.82ft: Connection at 1923.9
1921.82ft: PVT Horn Disabled
1921.82ft: Connection at 2015.6
1921.82ft: MUD VIS 60.00
1921.82ft: MUD WEIGHT 8.80
1921.82ft: MUD PH 9.10
1922.34ft: CORRECTION
CONNECTION AT 1923
1923.31ft: SURVEY 1853 24.0 inc
105.5 azi
1932.41ft: TRANSFER 40 BBLS TO
ACTIVE
1933.53ft: 1800 CFM
1938.90ft: ZWOB from SideKick
sk-11-11-0402
1938.90ft: PVT Horn Enabled

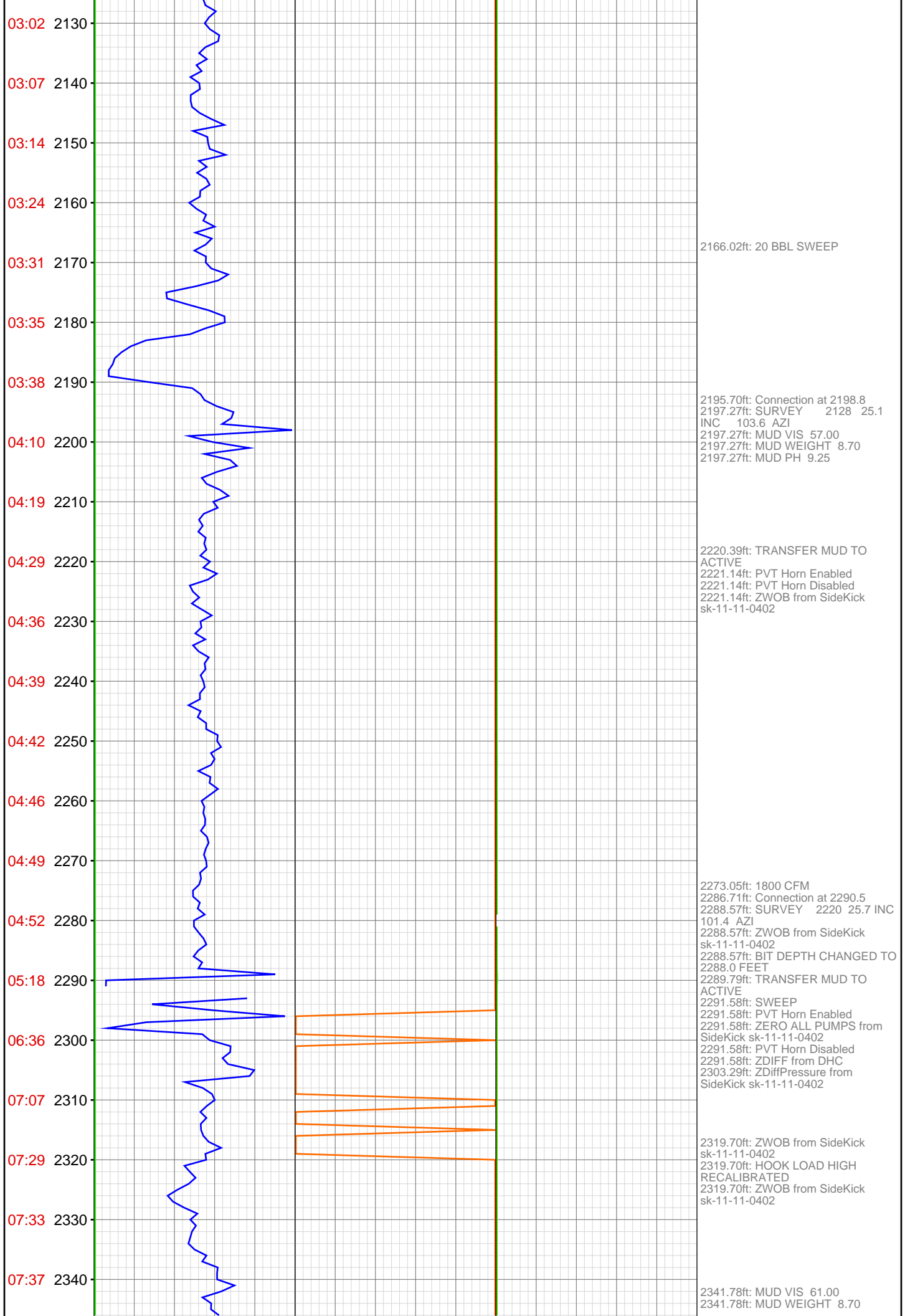
1998.28ft: TRANSFER F PREMIX TO
ACTIVE

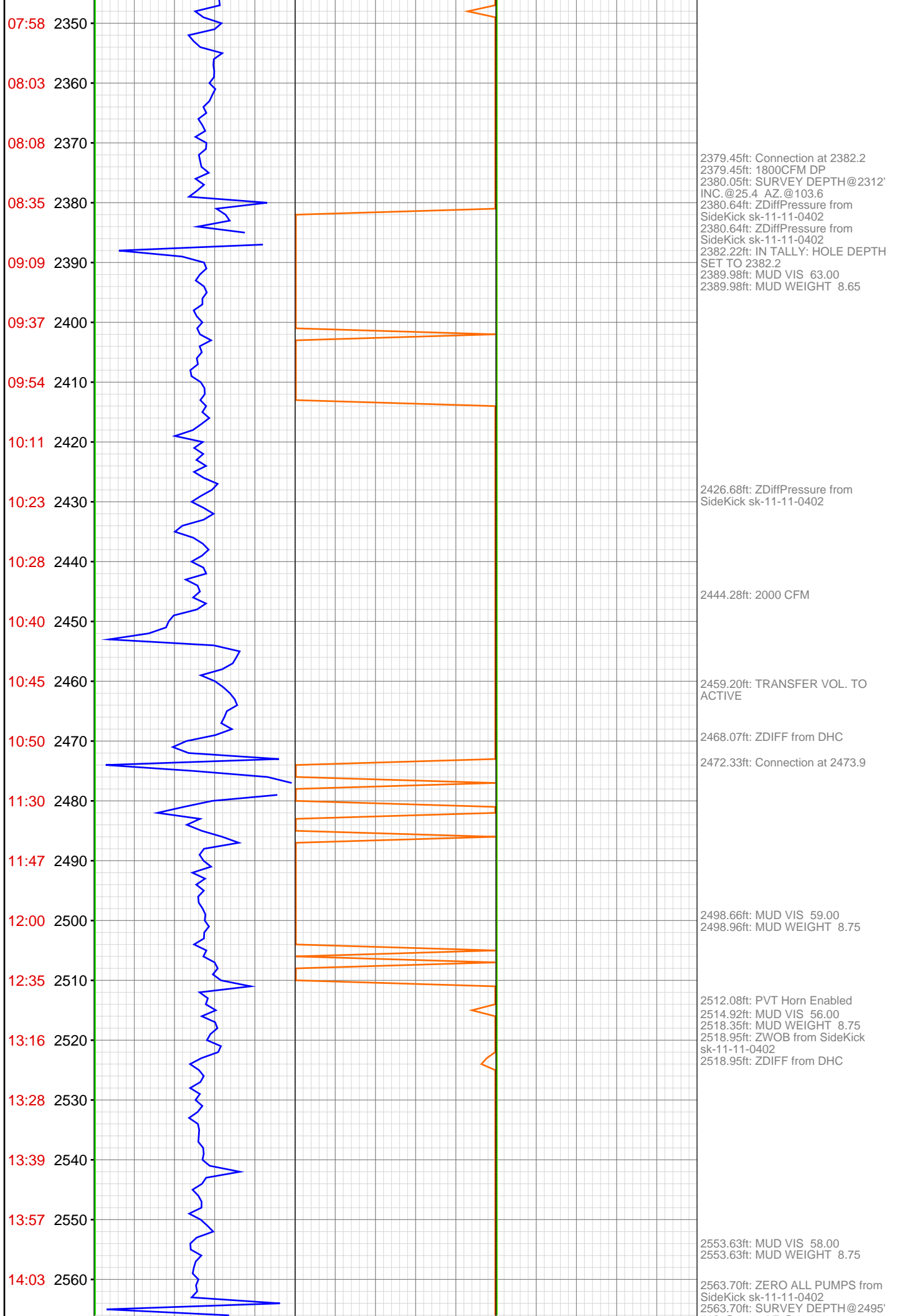
2009.39ft: PVT Horn Disabled
2009.39ft: Connection at 2015.6
2013.40ft: SURVEY 1945 24.7 inc
106.2 azi
2013.40ft: ZWOB from SideKick
sk-11-11-0402
2018.32ft: 20BBL SWEEP

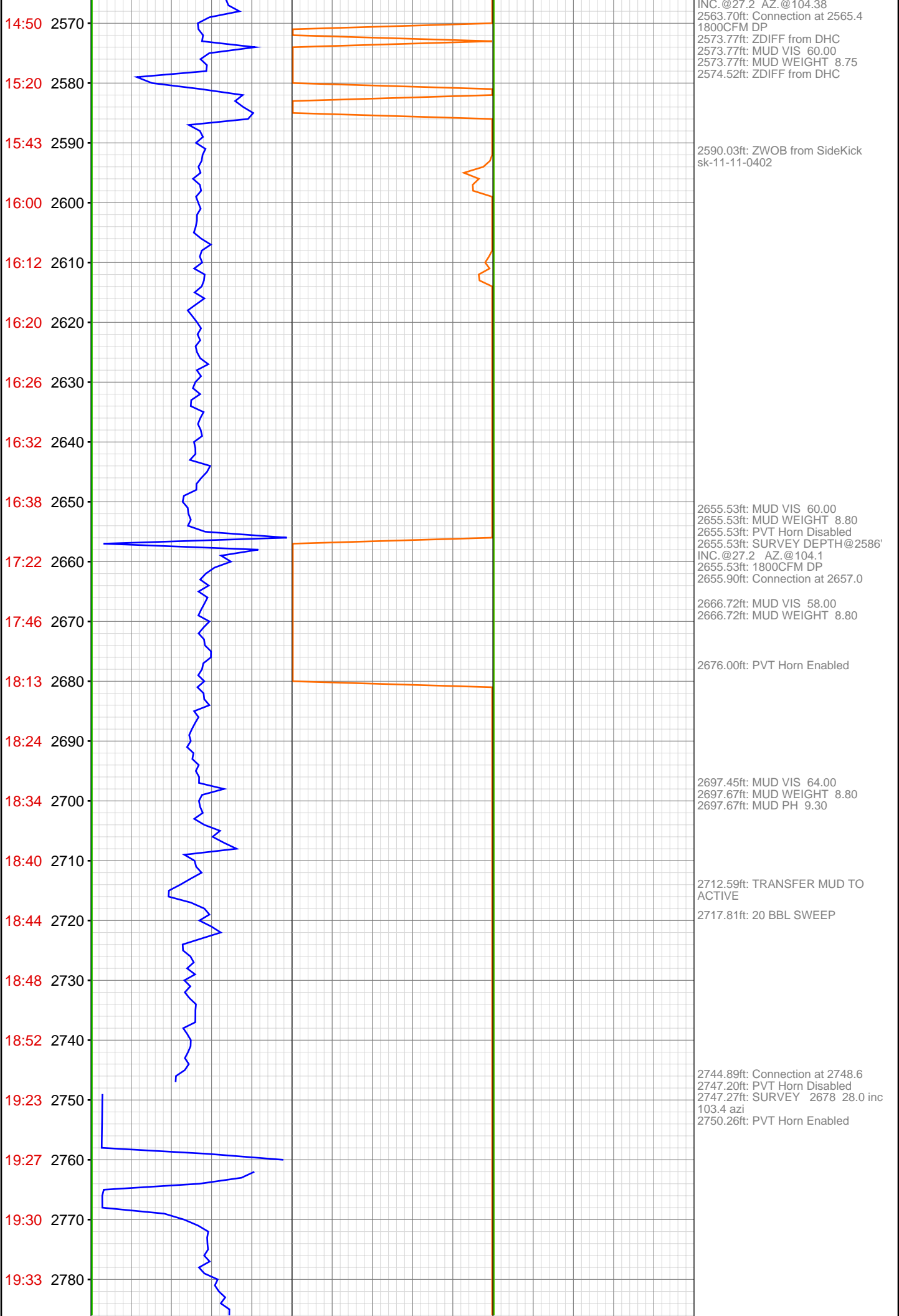
2036.08ft: ZWOB from SideKick
sk-11-11-0402
2036.08ft: PVT Horn Enabled
2036.08ft: 20BBL SWEEP

2068.30ft: MUD VIS 60.00
2068.30ft: MUD WEIGHT 8.70
2068.60ft: MUD PH 9.10

2105.37ft: Connection at 2107.1
2105.37ft: PVT Horn Disabled
2105.37ft: SURVEY 2037 24.9
INC 102.7 AZI
2109.77ft: TRANSFER MUD TO
ACTIVE







19:37 2790
19:40 2800
19:43 2810
19:46 2820
19:50 2830
20:21 2840
20:26 2850
20:29 2860
20:33 2870
20:36 2880
20:39 2890
20:42 2900
20:45 2910
20:49 2920
20:52 2930
21:37 2940
21:49 2950
21:54 2960
21:58 2970
22:06 2980
22:10 2990
22:15 3000

2838.13ft: Connection at 2840.1
2839.02ft: PVT Horn Disabled
2839.17ft: 20 BBL SWEEP
2839.17ft: SURVEY 2770 27.3 inc
105.4 azi
2846.18ft: TRANSFER MUD TO
ACTIVE 50BBLs
2849.24ft: PVT Horn Enabled

2930.77ft: Connection at 2931.6
2930.92ft: PVT Horn Disabled
2930.92ft: SURVEY 2861 25.6 inc
106.5 azi
2934.43ft: MUD VIS 61.00
2934.43ft: MUD WEIGHT 8.80
2934.50ft: MUD PH 9.20
2936.66ft: PVT Horn Enabled
2937.26ft: 1800 CFM

3021.70ft: Connection at 3023.1
3022.15ft: PVT Horn Disabled
3022.15ft: SURVEY 2953 24.5 inc
104.3 azi
3022.15ft: ZERO ALL PUMPS from
SideKick sk-11-11-0402
3022.15ft: PVT Horn Enabled
3023.11ft: IN TALLY: HOLE DEPTH
SET TO 3023.1

