

WELL LOCATION PLAT

T3S, R64W, 6th P.M.

1994 Private Alum.
Cap. 1.0' Below Ground
Lat. 39.752806°
Long. 104.508031°

N88°41'03"W - 2670.34' (Meas.)

N88°40'59"W - 2668.78' (Meas.)

R 6463
T3S
T4S

2008 Private Alum.
Cap. 0.5' Below Ground
Lat. 39.752639°
Long. 104.498539°

2008 Private Alum.
Cap. 0.4' Below Ground
Lat. 39.752469°
Long. 104.499053°

NOTE:
SEE ADDENDUM TO LEGAL PLAT FOR
EXISTING IMPROVEMENTS WITHIN 400'
OF THE PROPOSED DISTURBANCE.

N00°25'50"E - 2645.54' (Meas.)

1997 Private Alum.
Cap. 1.5' Below Ground
Lat. 39.745547°
Long. 104.508100°

STATE OF COLORADO
#36 VERTICAL
Elev. Ungraded Ground = 5555'

W.C. 1987 Private Alum.
Cap. 0.1' High
Lat. 39.738800°
Long. 104.508164°

2003 Private Alum.
Cap. 0.5' Below Ground
Lat. 39.736119°
Long. 104.498144°

True Position

N88°50'43"W - 2652.03' (Meas.)

N88°50'38"W - 2651.97' (Meas.)

T3S
T4S

N00°52'04"E - 2642.35' (Meas.)

1997 Private Brass
Cap. 0.2' Below Ground
Lat. 39.745219°
Long. 104.499197°

N00°44'08"E - 2640.85' (Meas.)

LEASE LINE

2396

2600'

LEGEND:

- = 90° SYMBOL
- = PROPOSED WELL HEAD.
- ▲ = SECTION CORNERS LOCATED.
- △ = SECTION CORNERS RE-ESTABLISHED. (Not Set on Ground.)

ConocoPhillips Company

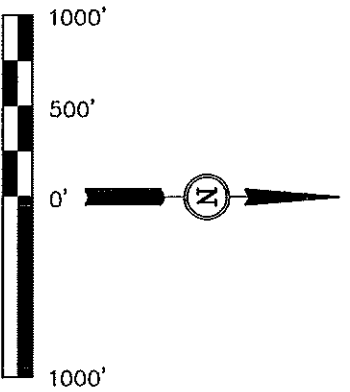
Well location, STATE OF COLORADO #36 VERTICAL,
located as shown in the NW 1/4 SE 1/4 of
Section 36, T3S, R64W, 6th P.M., Adams County,
Colorado.

BASIS OF ELEVATION

BENCHMARK 374 LOCATED ON THE SECTION LINE BETWEEN
SECTIONS 12 & 13, T5S, R64W, 6th P.M., TAKEN FROM 1988
PUBLISHED DATUM BY THE UNITED STATES DEPARTMENT OF
THE INTERIOR, GEOLOGICAL SURVEY AS BEING 6054.61 FEET.

BASIS OF BEARINGS

BASIS OF BEARINGS IS A G.P.S. OBSERVATION.



CERTIFICATE

THIS IS TO CERTIFY THAT THE ABOVE PLAT WAS PREPARED FROM
FIELD NOTES OF ACTUAL SURVEYS MADE BY ME OR UNDER MY
SUPERVISION AND THAT THE SAME ARE TRUE AND CORRECT TO THE
BEST OF MY KNOWLEDGE AND BELIEF.

REGISTERED AND SIGNED FOR
REGISTRATION AND RECORD
STATE OF COLORADO
JUL 12 2009

UNTAEH ENGINEERING & LAND SURVEYING
85 SOUTH 200 EAST - VERNAL, UTAH 84078
(435) 789-1017

SCALE 1" = 1000'		DATE SURVEYED: 06-19-12	DATE DRAWN: 06-27-12
PARTY J.H. C.M. J.W.	REFERENCES G.L.O. PLAT		
WEATHER HOT	FILE CONOCO PHILLIPS COMPANY		

PDOP = 1.4	
NAD 83 (SURFACE LOCATION)	
LATITUDE = 39.744058° (39.744692)	
LONGITUDE = 104.295442° (104.498450)	
NAD 27 (SURFACE LOCATION)	
LATITUDE = 39.744034° (39.744706)	
LONGITUDE = 104.295255° (104.497931)	

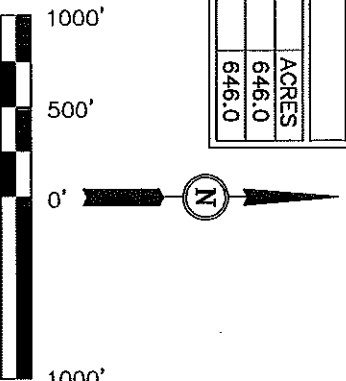
1994 Private Alum.
Cap. 1.0' Below Ground
Lat: 39.752806°
Long: 104.508031°

$$\begin{array}{r} R \\ 6463 \overline{)R} \end{array}$$

BASIS OF ELEVATION

BASIS OF BEARINGS

ACREAGES		
LEASE	OWNER	ACRES
A	STATE OF COLORADO	646.0
	TOTAL GROSS ACRES	646.0



CERTIFICATE

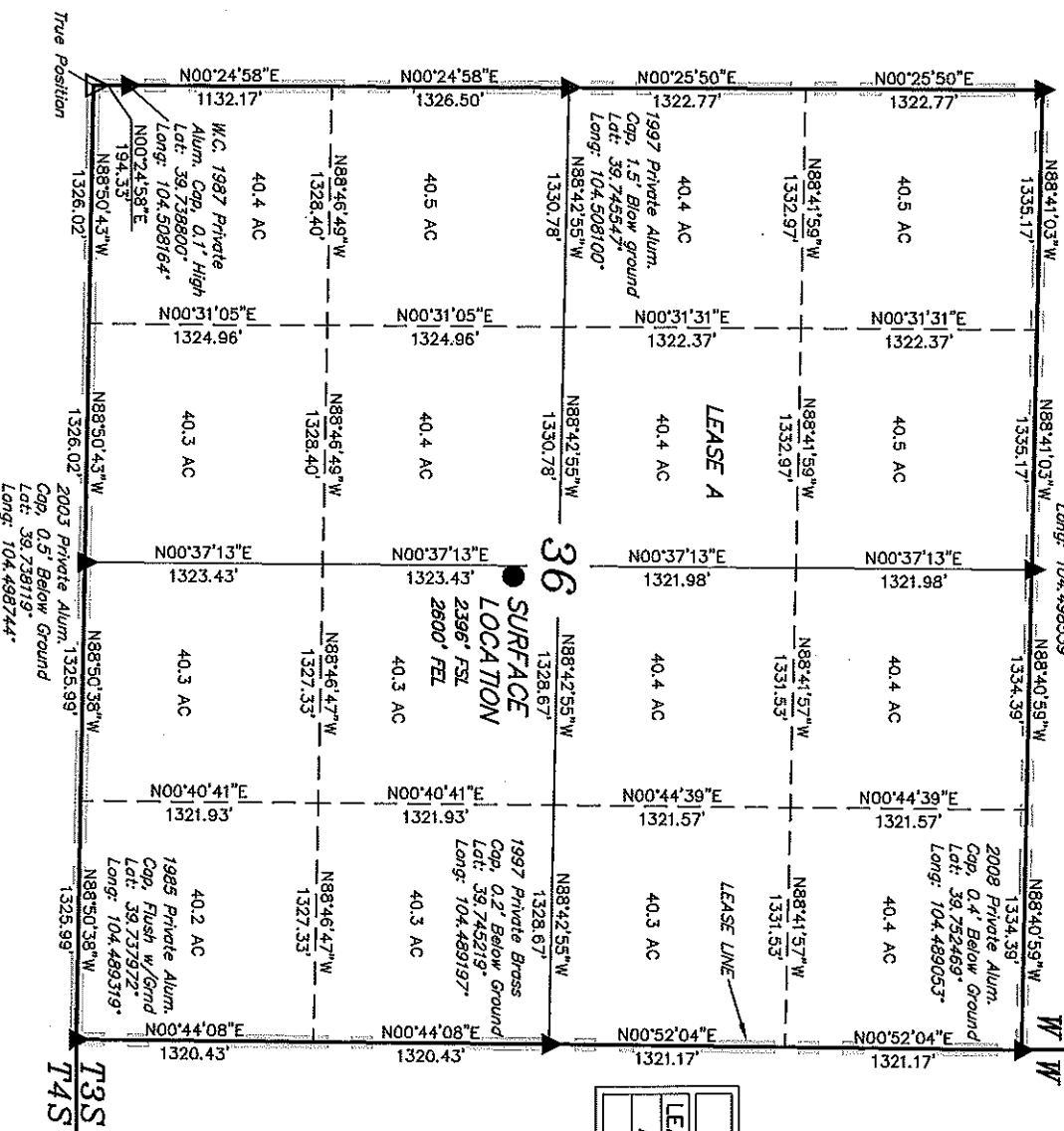
THIS IS TO CERTIFY THAT THE ABOVE PLANS WERE PREPARED FROM FIELD NOTES OF ACTUAL SURVEYS MADE BY ME OR UNDER MY SUPERVISION AND THAT THE SAME ARE TRUE AND CORRECT TO THE BEST OF MY KNOWLEDGE AND BELIEF.

REGISTERED AND SHAW FOR
REGISTRATION 6/8/74
STATE OF COLORADO

UNTAAH ENGINEERING & LAND SURVEYING
85 SOUTH 200 EAST - VERNAL, UTAH 84078
(435) 789-1017

(435) 789-1017

SCALE	DATE SURVEYED:	DATE DRAWN:
1" = 1000'	06-19-12	06-27-12
PARTY	REFERENCES	
J.H. C.M. J.W.	G.L.O. PLAT	
WEATHER	FILE	
HOT	CONOCO PHILLIPS COMPANY	



|| = 90° SYMBOL

PROPOSED WELL HEAD.

SECTION CORNERS LOCATED.

Δ = SECTION CORNERS RE-ESTABLISHED. (Not Set on Ground.)

Δ = SECTION CORNERS RE-ESTABLISHED. (Not Set on Ground.)



ConocoPhillips Company
ADDENDUM TO LEGAL PLAT FOR
STATE OF COLORADO #36 VERTICAL
SECTION 36, T3S, R64W, 6th P.M.
2396' FSL 2600' FEL

SCALE: 1" = 200'
DATE: 06-28-12
DRAWN BY: J.W.

