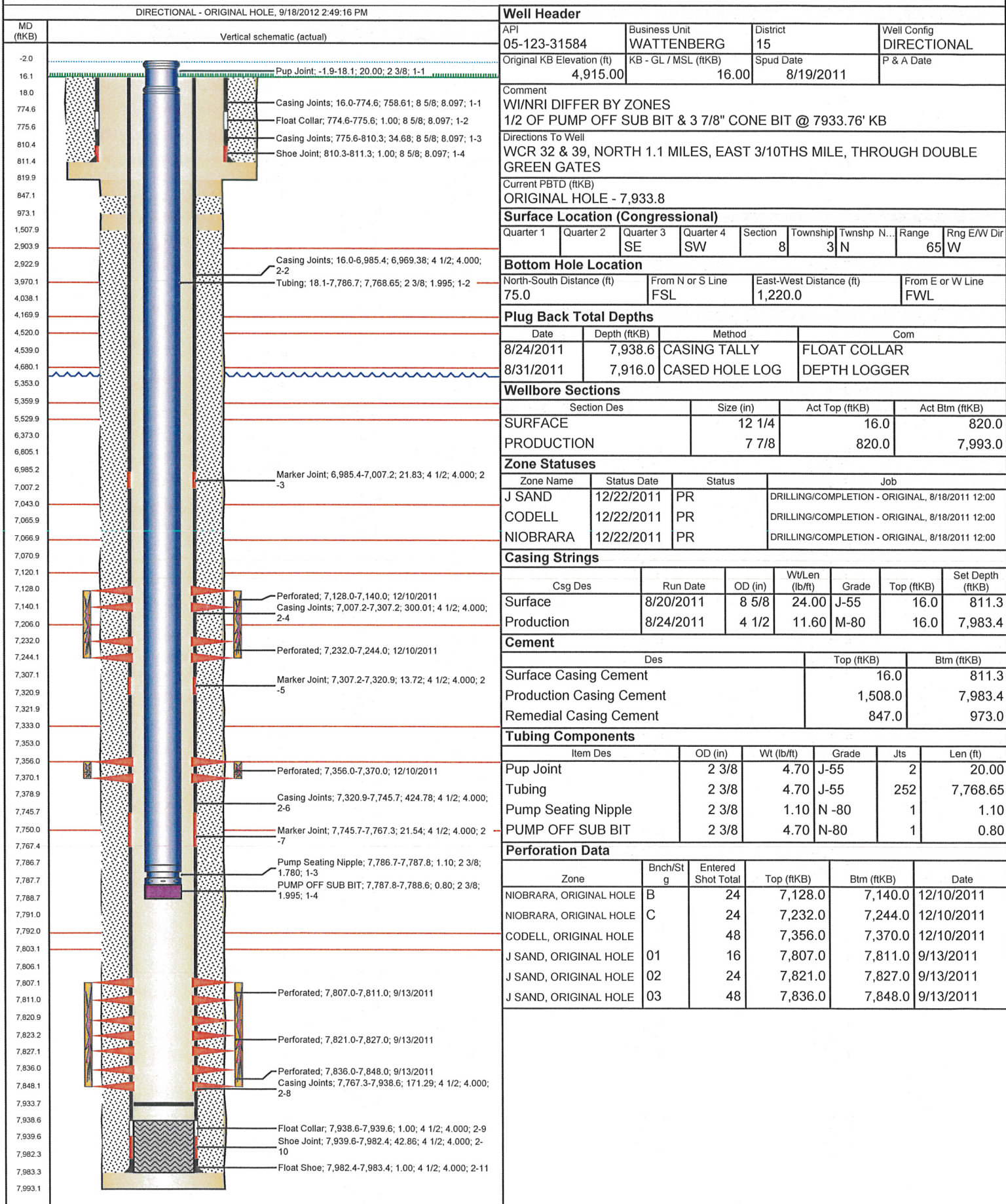


Well Name: REI H17-29D



Well Header

| | | | |
|----------------------------|----------------------|-----------|-------------|
| API | Business Unit | District | Well Config |
| 05-123-31584 | WATTENBERG | 15 | DIRECTIONAL |
| Original KB Elevation (ft) | KB - GL / MSL (ftKB) | Spud Date | P & A Date |
| 4,915.00 | 16.00 | 8/19/2011 | |

Comment
WI/NRI DIFFER BY ZONES
1/2 OF PUMP OFF SUB BIT & 3 7/8" CONE BIT @ 7933.76' KB

Directions To Well
WCR 32 & 39, NORTH 1.1 MILES, EAST 3/10THS MILE, THROUGH DOUBLE GREEN GATES

Current PBTD (ftKB)
ORIGINAL HOLE - 7,933.8

Surface Location (Congressional)

| | | | | | | | | |
|-----------|-----------|-----------|-----------|---------|----------|-------------|-------|-------------|
| Quarter 1 | Quarter 2 | Quarter 3 | Quarter 4 | Section | Township | Twnshp N... | Range | Rng E/W Dir |
| | | SE | SW | 8 | 3 | N | 65 | W |

Bottom Hole Location

| | | | |
|---------------------------|------------------|-------------------------|------------------|
| North-South Distance (ft) | From N or S Line | East-West Distance (ft) | From E or W Line |
| 75.0 | FSL | 1,220.0 | FWL |

Plug Back Total Depths

| Date | Depth (ftKB) | Method | Com |
|-----------|--------------|----------------|--------------|
| 8/24/2011 | 7,938.6 | CASING TALLY | FLOAT COLLAR |
| 8/31/2011 | 7,916.0 | CASED HOLE LOG | DEPTH LOGGER |

Wellbore Sections

| Section Des | Size (in) | Act Top (ftKB) | Act Btm (ftKB) |
|-------------|-----------|----------------|----------------|
| SURFACE | 12 1/4 | 16.0 | 820.0 |
| PRODUCTION | 7 7/8 | 820.0 | 7,993.0 |

Zone Statuses

| Zone Name | Status Date | Status | Job |
|-----------|-------------|--------|---|
| J SAND | 12/22/2011 | PR | DRILLING/COMPLETION - ORIGINAL, 8/18/2011 12:00 |
| CODELL | 12/22/2011 | PR | DRILLING/COMPLETION - ORIGINAL, 8/18/2011 12:00 |
| NIOBRARA | 12/22/2011 | PR | DRILLING/COMPLETION - ORIGINAL, 8/18/2011 12:00 |

Casing Strings

| Csg Des | Run Date | OD (in) | Wt/Len (lb/ft) | Grade | Top (ftKB) | Set Depth (ftKB) |
|------------|-----------|---------|----------------|-------|------------|------------------|
| Surface | 8/20/2011 | 8 5/8 | 24.00 | J-55 | 16.0 | 811.3 |
| Production | 8/24/2011 | 4 1/2 | 11.60 | M-80 | 16.0 | 7,983.4 |

Cement

| Des | Top (ftKB) | Btm (ftKB) |
|--------------------------|------------|------------|
| Surface Casing Cement | 16.0 | 811.3 |
| Production Casing Cement | 1,508.0 | 7,983.4 |
| Remedial Casing Cement | 847.0 | 973.0 |

Tubing Components

| Item Des | OD (in) | Wt (lb/ft) | Grade | Jts | Len (ft) |
|---------------------|---------|------------|-------|-----|----------|
| Pup Joint | 2 3/8 | 4.70 | J-55 | 2 | 20.00 |
| Tubing | 2 3/8 | 4.70 | J-55 | 252 | 7,768.65 |
| Pump Seating Nipple | 2 3/8 | 1.10 | N -80 | 1 | 1.10 |
| PUMP OFF SUB BIT | 2 3/8 | 4.70 | N-80 | 1 | 0.80 |

Perforation Data

| Zone | Bnch/St g | Entered Shot Total | Top (ftKB) | Btm (ftKB) | Date |
|-------------------------|-----------|--------------------|------------|------------|------------|
| NIOBRARA, ORIGINAL HOLE | B | 24 | 7,128.0 | 7,140.0 | 12/10/2011 |
| NIOBRARA, ORIGINAL HOLE | C | 24 | 7,232.0 | 7,244.0 | 12/10/2011 |
| CODELL, ORIGINAL HOLE | | 48 | 7,356.0 | 7,370.0 | 12/10/2011 |
| J SAND, ORIGINAL HOLE | 01 | 16 | 7,807.0 | 7,811.0 | 9/13/2011 |
| J SAND, ORIGINAL HOLE | 02 | 24 | 7,821.0 | 7,827.0 | 9/13/2011 |
| J SAND, ORIGINAL HOLE | 03 | 48 | 7,836.0 | 7,848.0 | 9/13/2011 |