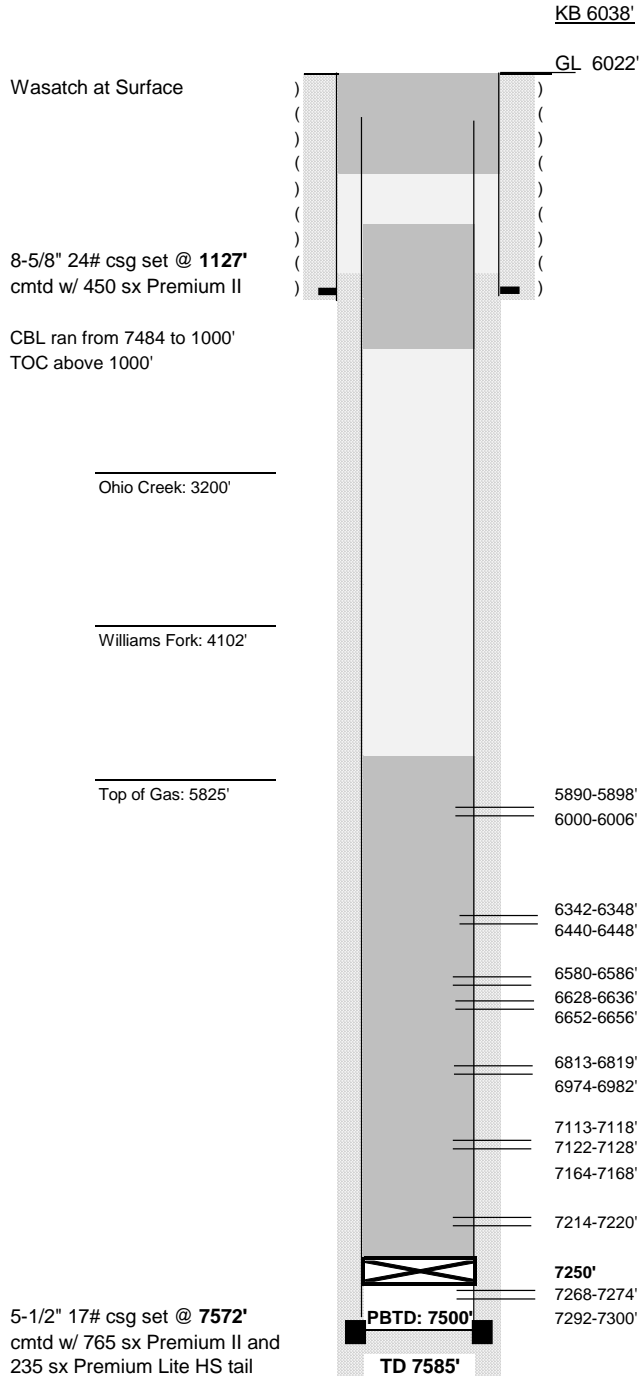


**WELLBORE DIAGRAM
ACTUAL PLUG AND ABANDONMENT**

1823'FNL, 812'FEL

Operator:	Koch Exploration Company
Well Name:	Ant hill Unit 33-24
Lease Number:	C-01275
Location:	SENE Sec. 33-T2N-R96W
Field:	White River Dome
County, State:	Rio Blanco, CO
API Number:	05-103-10235
Diagram Date:	1/30/2012



Well History

Spud Date:	6/18/2002
Date TD Reached:	7/8/2002
Completion Date:	12/27/2002
P&A Date	1/7/2012

Attempt to cut and pull csg at 300': would not pull
Approval from Betty Lau to cut @ 100'
Pump 72 sks cement (15.6#, 1.16 yield) with good returns to surface
POOH w/ tbg and fill csg with 5 sks (15.6#, 1.16 yield)

Spot 35 sks cement (15.6#, 1.16 yield) across shoe
EOT at 1220'

Pressure test casing to 550#; held for 15 mins.
Witnessed by Justin Wilson

Pumped total of 192 sks cement from 5819-7100'
Tagged hard 150' above CIBP; given OK to proceed by BLM
BLM Rep Justin Wilson on location to witness final tag over MSVD