

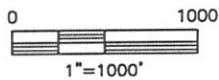
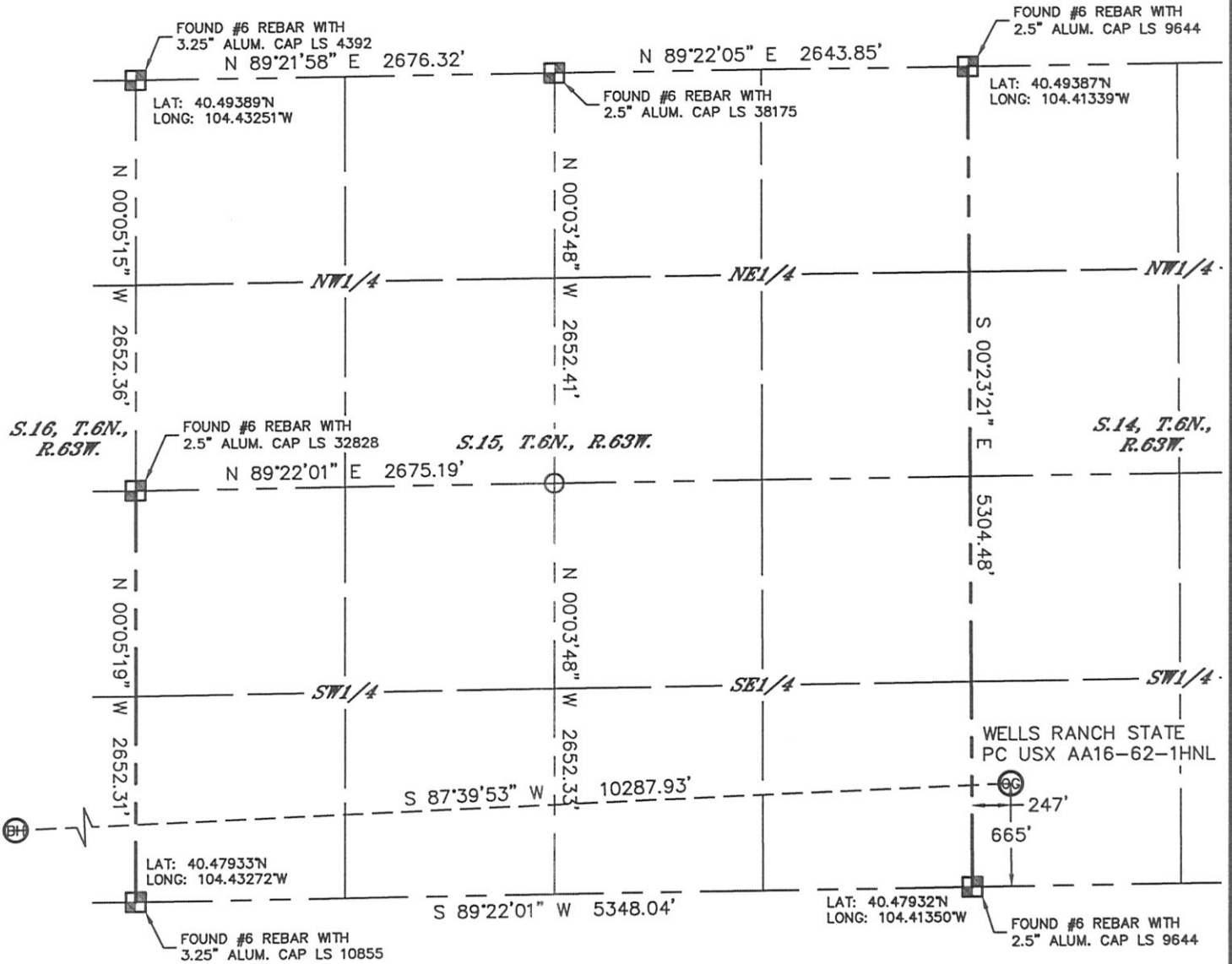


Lat40°, Inc. 1635 Foxtrail Drive, Suite 325 Loveland, CO 970-776-3321

# WELL LOCATION CERTIFICATE

THIS MAP DOES NOT REPRESENT A BOUNDARY SURVEY



SECTION: 14  
TOWNSHIP: 6N  
RANGE: 63W



#### NOTE

According to Colorado law, you must commence any legal action based upon any defect in this W.L.C. within three years after you discover such defect. In no event, may any action based upon any defect in this survey be commenced more than ten years after the date of the certificate shown hereon. (13-80-105 C.R.S.)

#### LEGEND

-  = ALIQUOT MONUMENT AS DESCRIBED
-  = CALCULATED POSITION

#### SHEET 2 OF 3

Brian T. Brinkman-On Demand Landmark, Inc.  
Colorado Licensed Professional Land Surveyor No. 38175  
DATE: 6/4/2012  
PROJECT#: 2012075



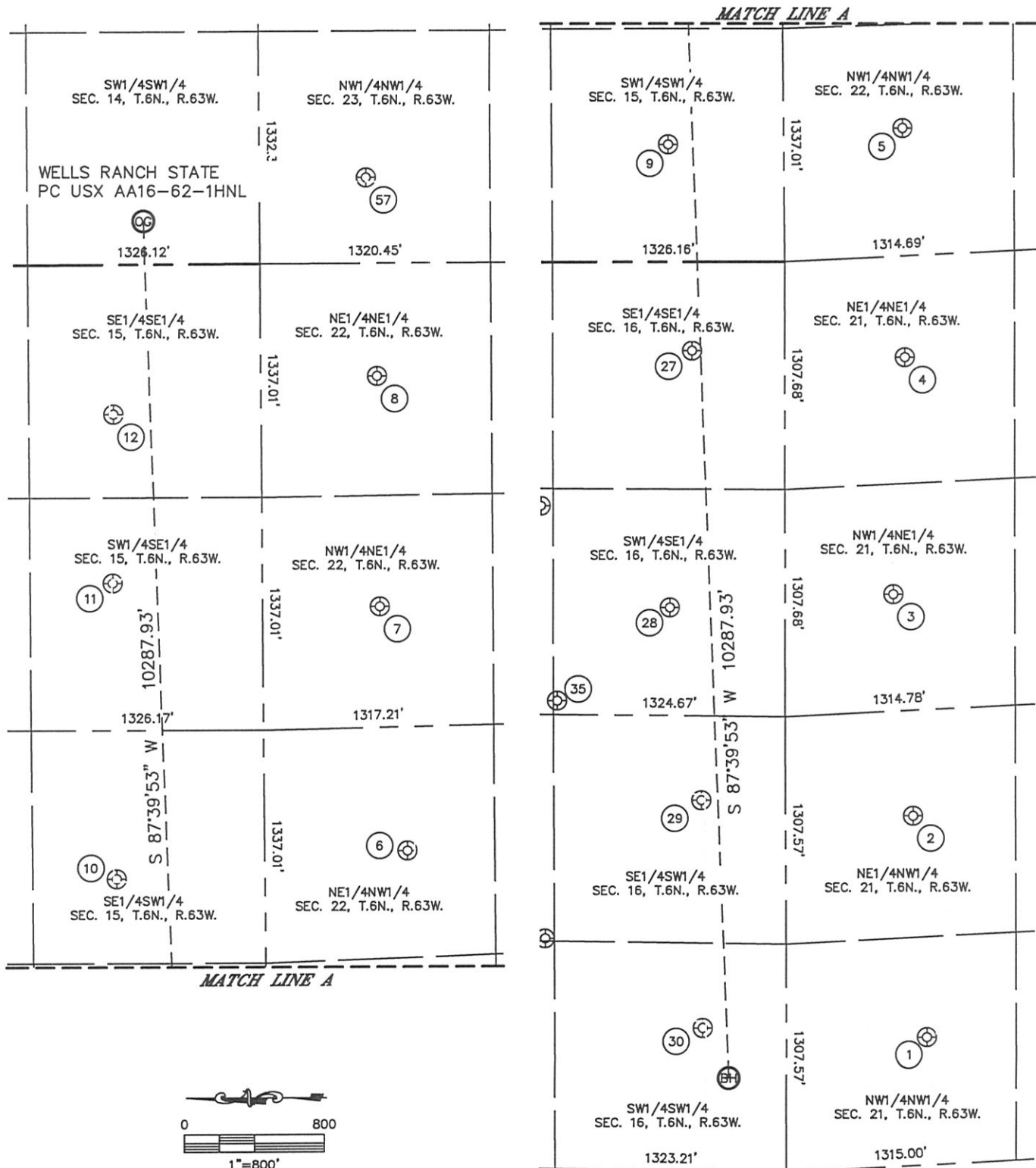


# SITE SKETCH

WELLS RANCH STATE PC USX AA16-62-1HNL

(1 OF 2)

SECTION: 14  
TOWNSHIP: 6N  
RANGE: 63W



## SITE SKETCH

WELLS RANCH STATE PC USX AA16-62-1HNL  
(2 OF 2)

SECTION: 14  
TOWNSHIP: 6N  
RANGE: 63W

①  
WELLS RANCH AA21-04  
NW1/4NW1/4  
803' FNL  
727' FWL  
LAT-40.47722°N  
LONG-104.44878°W  
PDOP: 1.6  
ELEV: 4677'

②  
WELLS RANCH AA21-03  
NE1/4NW1/4  
729' FNL  
2003' FWL  
LAT-40.47740°N  
LONG-104.44420°W  
PDOP: 1.8  
ELEV: 4679'

③  
WELLS RANCH AA21-02  
NW1/4NE1/4  
618' FNL  
1939' FEL  
LAT-40.47767°N  
LONG-104.43961°W  
PDOP: 1.8  
ELEV: 4682'

④  
WELLS RANCH AA21-01  
NE1/4NE1/4  
687' FNL  
584' FEL  
LAT-40.47746°N  
LONG-104.43473°W  
PDOP: 1.9  
ELEV: 4706'

⑤  
WELLS RANCH PC AA22-04  
NW1/4NW1/4  
678' FNL  
732' FWL  
LAT-40.47747°N  
LONG-104.43000°W  
PDOP: 1.9  
ELEV: 4710'

⑥  
WELLS RANCH PC AA22-03  
NE1/4NW1/4  
816' FNL  
1939' FWL  
LAT-40.47709°N  
LONG-104.42564°W  
PDOP: 1.9  
ELEV: 4722'

⑦  
WELLS RANCH PC AA22-02  
NW1/4NE1/4  
670' FNL  
1969' FEL  
LAT-40.47748°N  
LONG-104.42059°W  
PDOP: 2.0  
ELEV: 4733'

⑧  
WELLS RANCH PC AA22-01  
NE1/4NE1/4  
665' FNL  
648' FEL  
LAT-40.47749°N  
LONG-104.41584°W  
PDOP: 2.1  
ELEV: 4736'

⑨  
WELLS RANCH 14-15  
SW1/4SW1/4  
661' FSL  
673' FWL  
LAT-40.48115°N  
LONG-104.43027°W  
PDOP: 2.6  
ELEV: 4696'

⑩  
WELLS RANCH 24-15  
SE1/4SW1/4  
848' FSL  
1821' FWL  
LAT-40.48165°N  
LONG-104.42614°W  
PDOP: 2.3  
ELEV: 4712'

⑪  
WELLS RANCH 34-15  
SW1/4SE1/4  
856' FSL  
1824' FEL  
LAT-40.48167°N  
LONG-104.42003°W  
PDOP: 1.8  
ELEV: 4718'

⑫  
WELLS RANCH 44-15  
SE1/4SE1/4  
844' FSL  
855' FEL  
LAT-40.48164°N  
LONG-104.41655°W  
PDOP: 1.8  
ELEV: 4734'

⑳  
BASHOR STATE AA16-16  
SE1/4SE1/4  
529' FSL  
511' FEL  
LAT-40.48080°N  
LONG-104.43453°W  
PDOP: 1.9  
ELEV: 4694'

㉑  
BASHOR STATE AA16-15  
SW1/4SE1/4  
660' FSL  
1984' FEL  
LAT-40.48118°N  
LONG-104.43982°W  
PDOP: 1.8  
ELEV: 4680'

㉒  
BASHOR STATE AA16-14  
SE1/4SW1/4  
482' FSL  
2126' FWL  
LAT-40.48072°N  
LONG-104.44381°W  
PDOP: 1.8  
ELEV: 4678'

㉓  
BASHOR STATE AA16-13  
SW1/4SW1/4  
479' FSL  
816' FWL  
LAT-40.48074°N  
LONG-104.44852°W  
PDOP: 1.7  
ELEV: 4680'

㉔  
BASHOR STATE AA16-24  
SW1/4SE1/4  
1304' FSL  
2518' FEL  
LAT-40.48296°N  
LONG-104.44171°W  
PDOP: 2.0  
ELEV: 4679'

㉕  
WELLS RANCH USX AA23-04  
NW1/4NW1/4  
609' FNL  
490' FWL  
LAT-40.47764°N  
LONG-104.41175°W  
PDOP: 1.6  
ELEV: 4747'