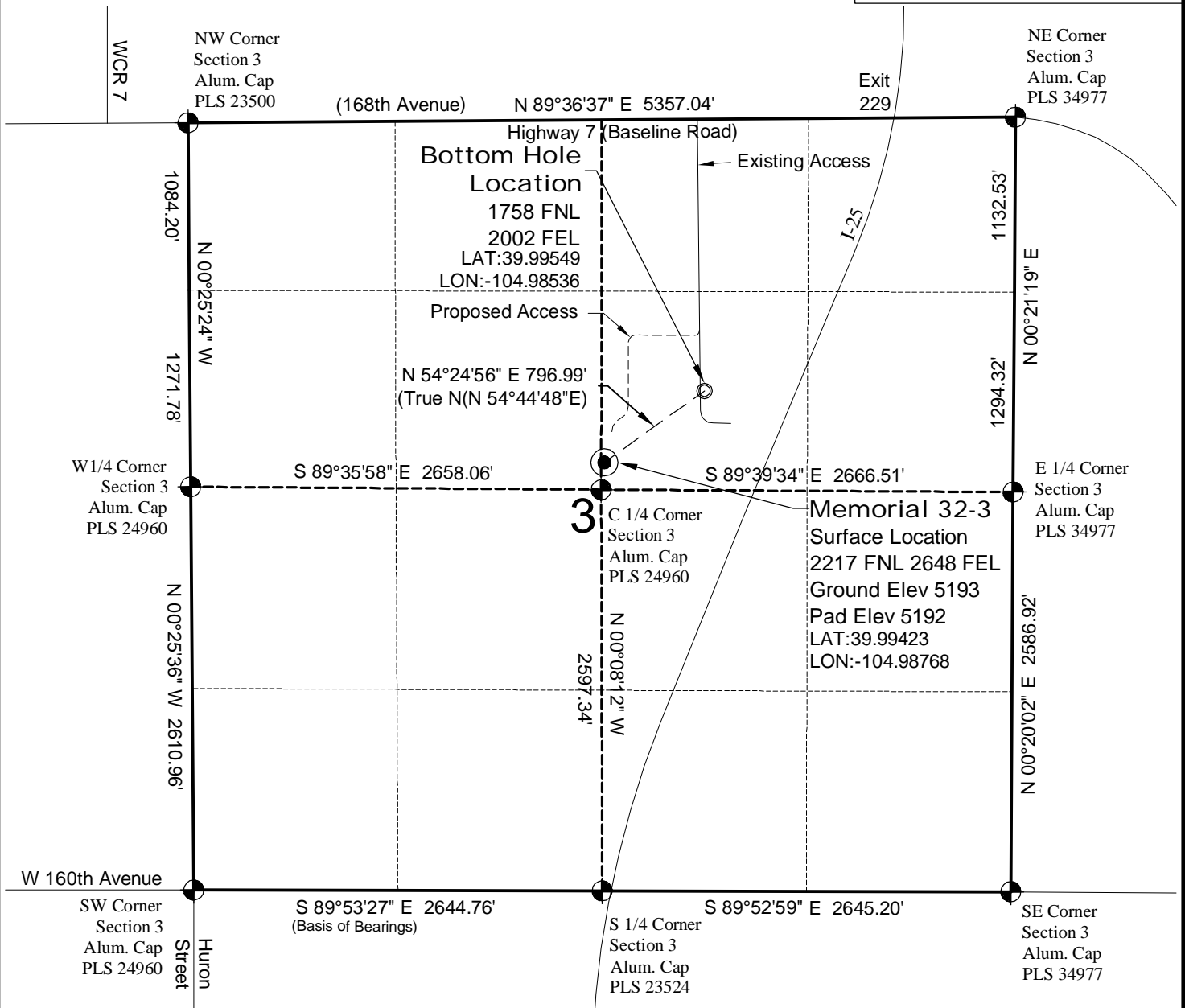


WELL LOCATION MAP

**MEMORIAL
22-3 PAD**

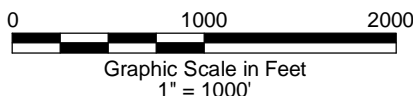


SURVEYOR'S STATEMENT

The undersigned hereby states that the well location shown hereon was staked on the ground based on existing monumentation and/or physical evidence found in the field and is correct to the best of my knowledge, information and belief.

NOTES

- 1.) Coordinates based on NGS control point "LUCY" with an elevation of 5297. NAVD 1988.
 - 2.) All directions, distances, and dimensions shown hereon are based on coordinates from the "Colorado coordinate system of 1983 north zone" (article 52 of title 38, C.R.S.).
 - 3.) All section line dimensions shown hereon are based on field measurements of existing monuments and/or physical evidence found in the field unless otherwise indicated. Refer to land survey plats deposited in Broomfield County & COGCC Well Plats.
 - 4.) Physical features shown hereon are for graphical representation only.
 - 5.) See Form 2A for visible improvements within 400' of wellhead.
 - 6.) Distances to nearest section lines are measured perpendicularly.
 - 7.) This is not a land survey nor land survey plat.
 - 8.) Date of Survey 3/30/12; Date of Drawing 7/18/12. REV 0
- PDOP Reading: 2.6 Instrument Operator: Marc Woodard



SOVEREIGN OPERATING CO., LLC
MEMORIAL 32-3

SL SW1/4 NE1/4 SEC.3 T1S R68W
BHL SW1/4 NE1/4 SEC.3 T1S R68W
6th PM BROOMFIELD COUNTY COLORADO