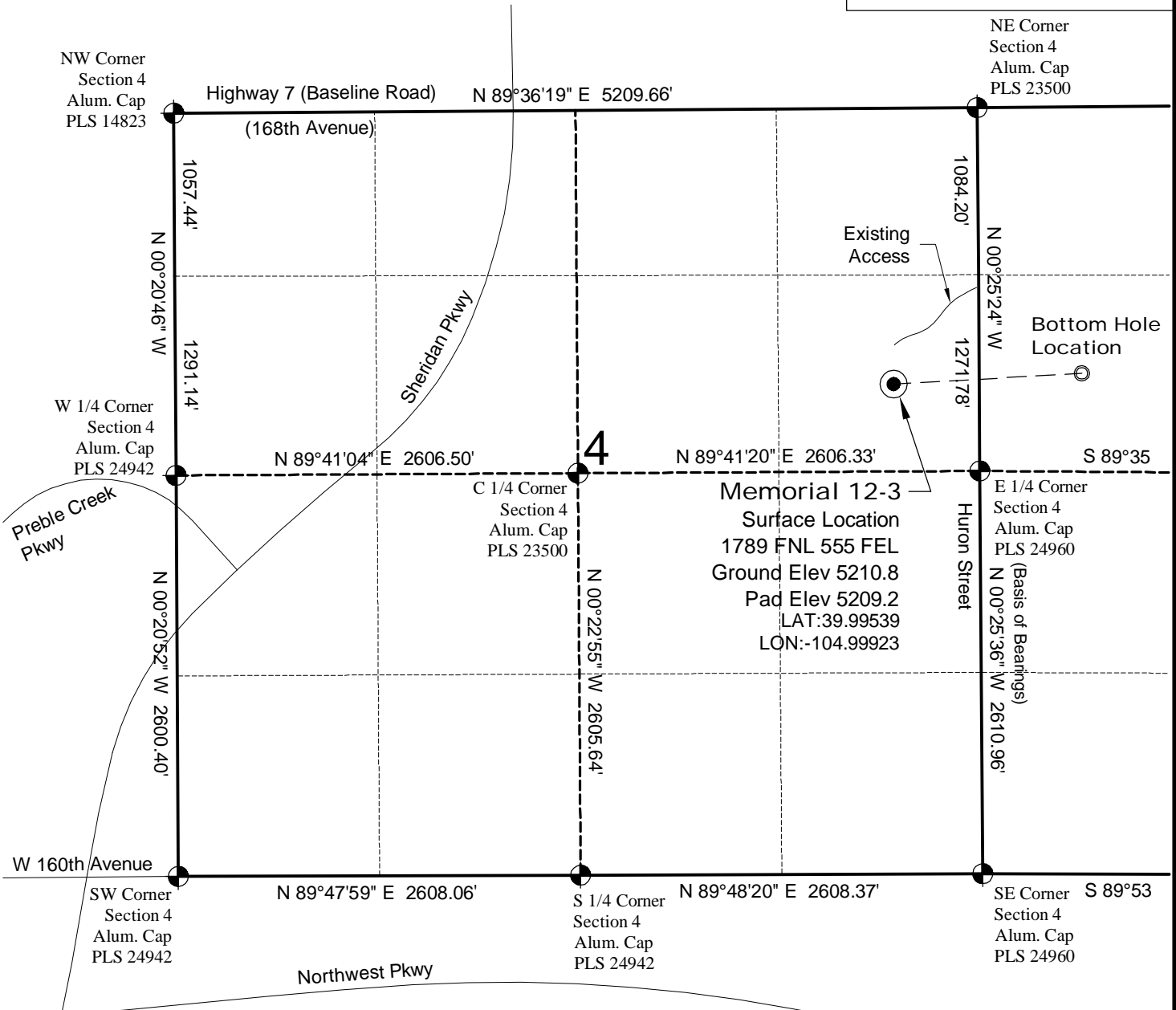


# WELL LOCATION MAP

**HULSTROM  
G UNIT 1 PAD**

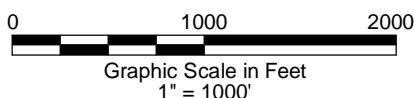


## SURVEYOR'S STATEMENT

The undersigned hereby states that the well location shown hereon was staked on the ground based on existing monumentation and/or physical evidence found in the field and is correct to the best of my knowledge, information and belief.

## NOTES

- 1.) Coordinates based on NGS control point "LUCY" with an elevation of 5297. NAVD 1988.
  - 2.) All directions, distances, and dimensions shown hereon are based on coordinates from the "Colorado coordinate system of 1983 north zone" (article 52 of title 38, C.R.S.).
  - 3.) All section line dimensions shown hereon are based on field measurements of existing monuments and/or physical evidence found in the field unless otherwise indicated. Refer to land survey plats deposited in Broomfield County & COGCC Well Plats.
  - 4.) Physical features shown hereon are for graphical representation only.
  - 5.) See Form 2A for visible improvements within 400' of wellhead.
  - 6.) Distances to nearest section lines are measured perpendicularly.
  - 7.) This is not a land survey nor land survey plat.
  - 8.) Date of Survey 3/21/12; Date of Drawing 7/23/12. REV 0
- PDOP Reading: 1.2 Instrument Operator: Marc Woodard



**GEO SURV**

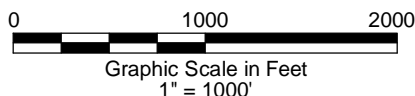
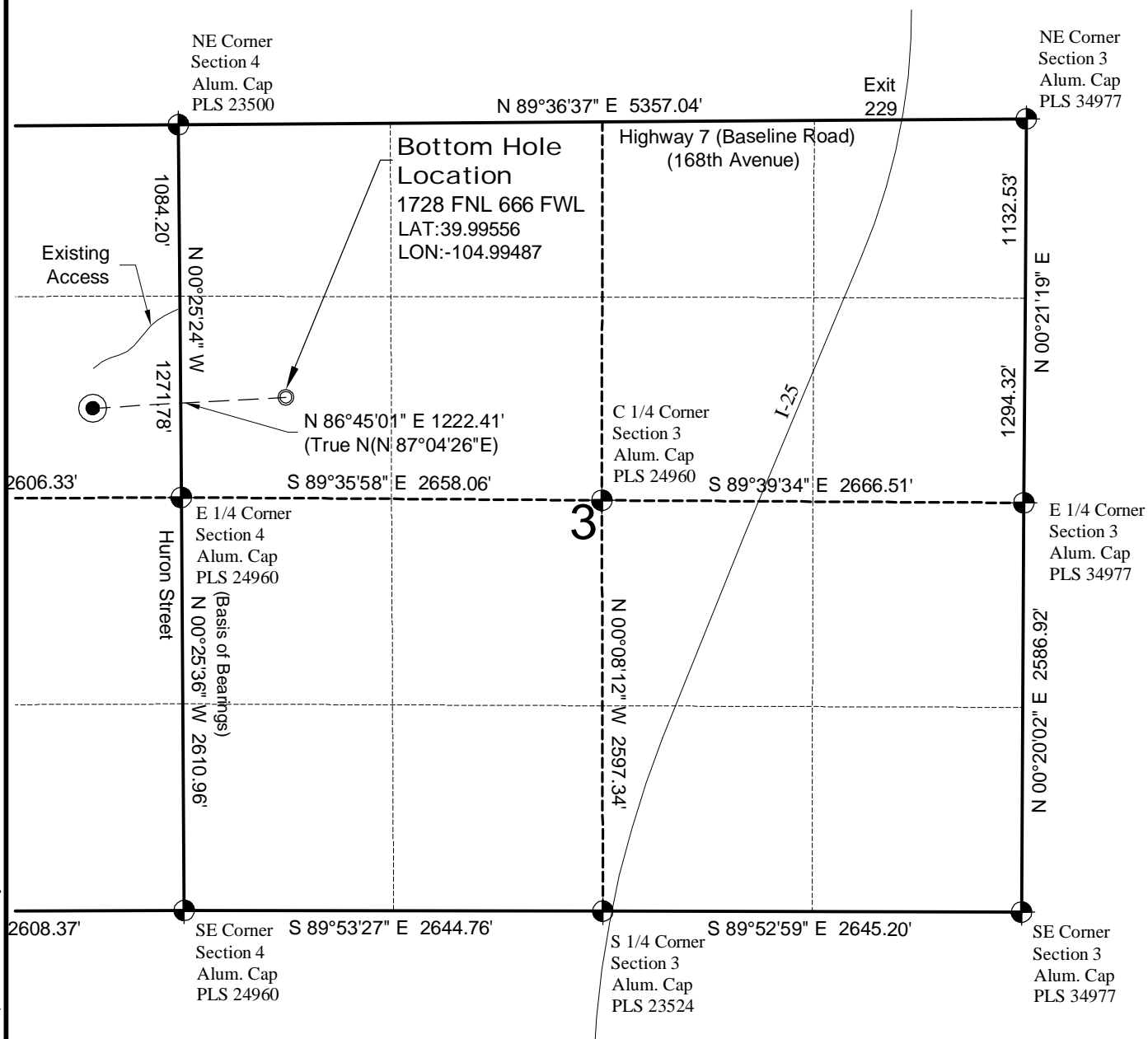
LAND SURVEYING AND MAPPING  
LAFAYETTE - WINTER PARK  
Ph 303 666 0379 Fx 303 665 6320

**SOVEREIGN OPERATING CO., LLC**  
**MEMORIAL 12-3**

SL SE1/4 NE1/4 SEC.4 T1S R68W  
BHL SW1/4 NW1/4 SEC.3 T1S R68W  
6th PM BROOMFIELD COUNTY COLORADO

# BOTTOM HOLE LOCATION MAP

**HULSTROM  
G UNIT 1 PAD**



**SOVEREIGN OPERATING CO., LLC**  
**MEMORIAL 12-3**

**SL SE1/4 NE1/4 SEC.4 T1S R68W**  
**BHL SW1/4 NW1/4 SEC.3 T1S R68W**  
**6th PM BROOMFIELD COUNTY COLORADO**