

T5S, R96W, 6th P.M.

1926 Brass Cap
1.0' High, Scattered
Stones
Lat: 39.593406°
Long: 108.108619°

Encana OIL & GAS (USA) INC.

Well location, WF16F-24 I25 596, located as shown in Lot 4 (Tract 37) of Section 25, T5S, R96W, 6th P.M., Garfield County, Colorado.

BASIS OF ELEVATION

SPOT ELEVATION AT THE NORTHWEST CORNER OF SECTION 30, T5S, R95W, 6th P.M. TAKEN FROM THE FORKED GULCH QUADRANGLE, COLORADO, GARFIELD COUNTY, 7.5 MINUTE SERIES (TOPOGRAPHICAL MAP) PUBLISHED BY THE UNITED STATES DEPARTMENT OF THE INTERIOR, GEOLOGICAL SURVEY. SAID ELEVATION IS MARKED AS BEING 5966 FEET.

BASIS OF BEARINGS

BASIS OF BEARINGS IS A G.P.S. OBSERVATION.

NOTE:
THE PROPERTY LINE IS LOCATED S26°W
5327' FROM THE PROPOSED WELL HEAD.

East 1/4 Corner
Re-Established by
Single Proportion
Method.

True Position
WEST -211.86' (G.L.O.)
W.C.
W 1/4 Cor. Sec. 30
1917 Brass Cap 1.2'
High, Pile of Stones
Lat: 39.584798°
Long: 108.107864°

2000 Alum. Cap
Flush w/ Ground
on 3/4" Rebar
Lat: 39.578908°
Long: 108.108601°

C.C.
SW Cor. Sec. 30
1916 Brass Cap
Buried 0.4' Deep
Lat: 39.577559°
Long: 108.108720°

THIS IS TO CERTIFY THAT THE ABOVE PLAT WAS PREPARED AND LOCATION AS SHOWN WAS STAKED ON THE GROUND FROM FIELD NOTES OF ACTUAL SURVEYS MADE BY ME OR UNDER MY SUPERVISION AND THAT THE SAME ARE TRUE AND CORRECT TO THE BEST OF MY KNOWLEDGE AND BELIEF.

REGISTERED LAND SURVEYOR
REGISTRATION NO. 17492
STATE OF COLORADO



CERTIFICATE

UINTAH ENGINEERING & LAND SURVEYING
85 SOUTH 200 EAST - VERNAL, UTAH 84078
(435) 789-1017

SCALE 1" = 1000'	DATE SURVEYED: 11-08-11	DATE DRAWN: 03-02-12
PARTY B.J. T.M. C.A.G.	REFERENCES G.L.O. PLAT	
WEATHER COLD	FILE Encana OIL & GAS (USA) INC.	

S89°51'11"W - 2632.48' (Meas.)

N89°59'50"W - 2651.46' (Meas.)

R
96
W

R
95
W

490.23'
True Position
N00°03'38"W - 2641.35' (Meas.)

NW Cor. Sec. 30
1916 Brass Cap
1.0' High, Pile of
Stones, Steel Post
Lat: 39.592061°
Long: 108.108622°

3" Alum. Cap
0.6' High
Lat: 39.593406°
Long: 108.118025°

W.C.
1917 Brass Cap
0.7' High
Lat: 39.590856°
Long: 108.127361°

LINE TABLE		
LINE	BEARING	LENGTH
L1	N00°10'29"E	495.12'
L2	S46°03'00"W	1141.14'

LOT 2

LOT 1

25

TRACT 37

LOT 4

274'

WF16F-24 I25 596

Elev. Ungraded Ground = 5825.1'

Elev. Graded Ground = 5824.2'

COC0044963

NOTE:

THE TARGET BOTTOM HOLE FOR THIS WELL IS LOCATED IN THE SE 1/4 SE 1/4 OF SECTION 24, T5S, R96W, 6th P.M., AT 26' FSL 321' FEL. IT BEARS N00°54'22"W 3178.33' FROM THE SURFACE LOCATION.

True Position
W.C.
1917 Brass Cap,
2.0' High
Lat: 39.578006°
Long: 108.127353°

S89°57'28"W - 2633.49' (Meas.)
S89°57'02"W - 2653.73' (Meas.)
W.C.
1917 Brass Cap
1.5' High, Mound
of Stones
Lat: 39.576728°
Long: 108.120925°

S00°05'17"W
5279.47' (Meas.)
SE Cor. Sec. 36
1982 Brass Cap
0.6' High
Lat: 39.564418°
Long: 108.108629°

PDOP = 2.3

NAD 83 (SURFACE LOCATION)	
LATITUDE	= 39°35'05.12" (39.584756)
LONGITUDE	= 108°06'34.50" (108.109583)
NAD 27 (SURFACE LOCATION)	
LATITUDE	= 39°35'05.20" (39.584778)
LONGITUDE	= 108°06'32.22" (108.108950)

Sheet 1q of 10

LEGEND:

- └ = 90° SYMBOL
- = PROPOSED WELL HEAD.
- ▲ = SECTION CORNERS LOCATED.
- △ = SECTION CORNERS RE-ESTABLISHED. (Not Set on Ground)



CERTIFICATE

THIS IS TO CERTIFY THAT THE ABOVE PLAT WAS PREPARED AND LOCATION AS SHOWN WAS STAKED ON THE GROUND FROM FIELD NOTES OF ACTUAL SURVEYS MADE BY ME OR UNDER MY SUPERVISION AND THAT THE SAME ARE TRUE AND CORRECT TO THE BEST OF MY KNOWLEDGE AND BELIEF.

REGISTERED LAND SURVEYOR
REGISTRATION NO. 17492
STATE OF COLORADO

UINTAH ENGINEERING & LAND SURVEYING
85 SOUTH 200 EAST - VERNAL, UTAH 84078
(435) 789-1017

SCALE 1" = 1000'	DATE SURVEYED: 11-08-11	DATE DRAWN: 03-02-12
PARTY B.J. T.M. C.A.G.	REFERENCES G.L.O. PLAT	
WEATHER COLD	FILE Encana OIL & GAS (USA) INC.	

T5S, R96W, 6th P.M.

Encana OIL & GAS (USA) INC.

Well location, WF16F-24 I25 596 (TARGET BOTTOM HOLE), located as shown in the SE 1/4 SE 1/4 of Section 24, T5S, R96W, 6th P.M., Garfield County, Colorado.

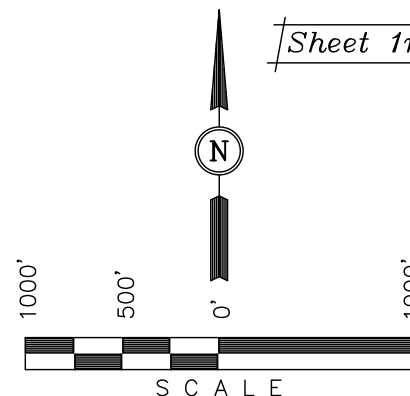
BASIS OF ELEVATION

SPOT ELEVATION AT THE NORTHWEST CORNER OF SECTION 30, T5S, R95W, 6th P.M. TAKEN FROM THE FORKED GULCH QUADRANGLE, COLORADO, GARFIELD COUNTY, 7.5 MINUTE SERIES (TOPOGRAPHICAL MAP) PUBLISHED BY THE UNITED STATES DEPARTMENT OF THE INTERIOR, GEOLOGICAL SURVEY. SAID ELEVATION IS MARKED AS BEING 5966 FEET.

BASIS OF BEARINGS

BASIS OF BEARINGS IS A G.P.S. OBSERVATION.

Sheet 1r of 10



CERTIFICATE

THIS IS TO CERTIFY THAT THE ABOVE PLAT WAS PREPARED AND LOCATION AS SHOWN WAS STAKED ON THE GROUND FROM FIELD NOTES OF ACTUAL SURVEYS MADE BY ME OR UNDER MY SUPERVISION AND THAT THE SAME ARE TRUE AND CORRECT TO THE BEST OF MY KNOWLEDGE AND BELIEF.

REGISTERED LAND SURVEYOR
REGISTRATION NO. 17492
STATE OF COLORADO

REV: 05-14-12

UINTAH ENGINEERING & LAND SURVEYING
85 SOUTH 200 EAST - VERNAL, UTAH 84078
(435) 789-1017

SCALE 1" = 1000'	DATE SURVEYED: 11-08-11	DATE DRAWN: 03-02-12
PARTY B.J. T.M. C.A.G.	REFERENCES G.L.O. PLAT	
WEATHER COLD	FILE Encana OIL & GAS (USA) INC.	

500'04'24"E - 5268.48' (Meas.)

S89°49'16"W - 2636.70' (Meas.)

S89°48'13"W - 2650.70' (Meas.)

1917 Brass Cap 1.4' High, Mound of Stones, Steel Fence Corner Post
Lat: 39.607847°
Long: 108.127392°

1917 Brass Cap 1.3' High
(3) Steel Post
Lat: 39.607869°
Long: 108.118036°

W.C. 1916 Brass Cap 2.0' High, "T" Post
Lat: 39.607894°
Long: 108.107461°

W.C. 1991 Private Alum. Cap, 1.0' High, E-W Fenceline, Pile of Stones
Lat: 39.606547°
Long: 108.106214°

LINE TABLE		
LINE	BEARING	LENGTH
L1	WEST	330.00'
L2	S89°49'06"W	680.86'
L3	N00°01'30"W	922.02'

NOTE:

THE PROPOSED BOTTOM HOLE BEARS N00°54'22"W 3178.33' FROM THE PROPOSED WELL HEAD WHICH IS LOCATED IN LOT 4 (TRACT 37) OF SECTION 25, T5S, R96W, 6th P.M., AT 2131' FSL 274' FEL.

NOTE:
THE LEASE LINE IS LOCATED EAST 321' FROM THE PROPOSED BOTTOM HOLE.

24

W.C. 1916 Brass Cap 1.0' High, 1" Conduit
Lat: 39.599286°
Long: 108.108617°

3" Alum. Cap 0.6' High
Lat: 39.593406°
Long: 108.118025°

WF16F-24 I25 596
TARGET BOTTOM HOLE

1926 Brass Cap 1.0' High, Scattered Stones
Lat: 39.593406°
Long: 108.108619°

W.C. 1917 Brass Cap 0.7' High
Lat: 39.590856°
Long: 108.127361°

N89°51'11"E - 2632.48' (Meas.)

S89°59'50"E - 2651.46' (Meas.)

S00°03'38"E
2641.35' (Meas.)

East 1/4 Corner 25
Re-Established by
Single Porportion
Method.

NAD 83 (TARGET BOTTOM HOLE)	
LATITUDE	= 39°35'36.52" (39.593461)
LONGITUDE	= 108°06'35.14" (108.109761)
NAD 27 (TARGET BOTTOM HOLE)	
LATITUDE	= 39°35'36.60" (39.593500)
LONGITUDE	= 108°06'32.86" (108.109128)

LEGEND:

- └─ = 90° SYMBOL
- = PROPOSED WELL HEAD.
- ▲ = SECTION CORNERS LOCATED.
- △ = SECTION CORNERS RE-ESTABLISHED (Not Set on Ground)

SW Cor. Sec. 25
True Position